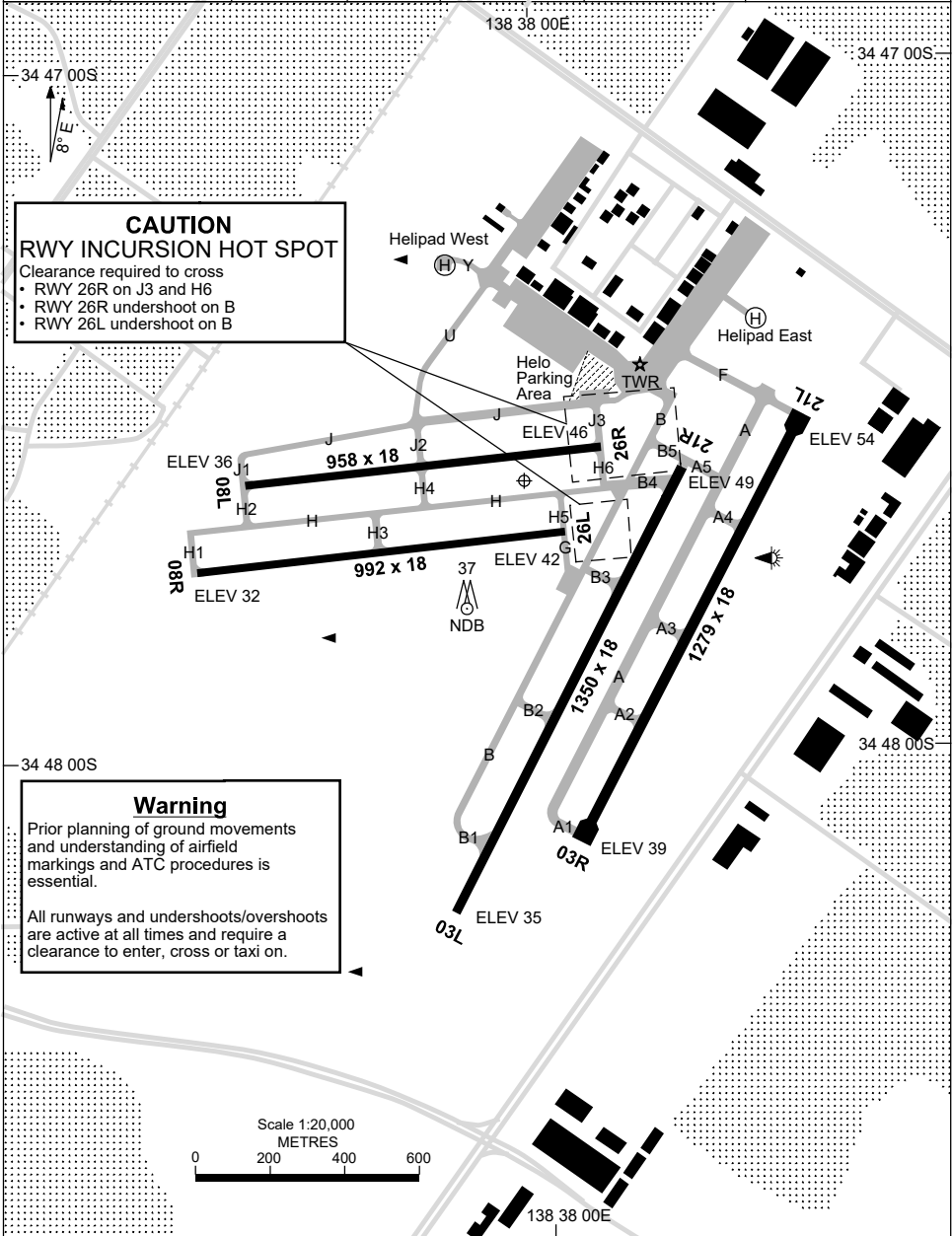


28 NOV 2024

34 47 36S 138 37 59E

**ADELAIDE/PARAFIELD, SA (YPPF)**

ATIS PF 120.9 416	APP AD 124.2 118.2	TWR PF 118.7 124.6	SMC PF 119.9	FIA (AH) AD CEN 130.45	CTAF+AFRU (AH) 118.7	Bearings are Magnetic Elevations in FEET AMSL
----------------------	-----------------------	-----------------------	-----------------	---------------------------	-------------------------	--



Changes: Editorial.

PPFAD01-181

28 NOV 2024

AD ELEV 57  
34 47 36S 138 37 59E

AERODROME CHART - Page 2  
**ADELAIDE/PARAFIELD, SA (YPPF)**

ATIS PF 120.9 416	APP AD 124.2 118.2	TWR PF 118.7 124.6	SMC PF 119.9	FIA (AH) AD CEN 130.45	CTAF+AFRU (AH) 118.7	Bearings are Magnetic Elevations in FEET AMSL
----------------------	-----------------------	-----------------------	-----------------	---------------------------	-------------------------	--

--	--	--	--	--	--	--

RWY	AERODROME LIGHTING					
		ABN : FLG W 6 SEC (TWR HR) TAXIWAY : TWY B GREEN CENTRELINE RL : MAN , SDBY (15 SEC), RWY 03L TURN PAD BLUE EDGE				
<b>03L</b> <sup>020</sup> <i>200</i> <b>21R</b>	LIRL LIRL					
<b>03R</b> <sup>020</sup> <i>200</i> <b>21L</b>	NIL NIL					
<b>08L</b> <sup>077</sup> <i>257</i> <b>26R</b>	NIL NIL					
<b>08R</b> <sup>077</sup> <i>257</i> <b>26L</b>	NIL NIL					

<b>NOTES</b>						

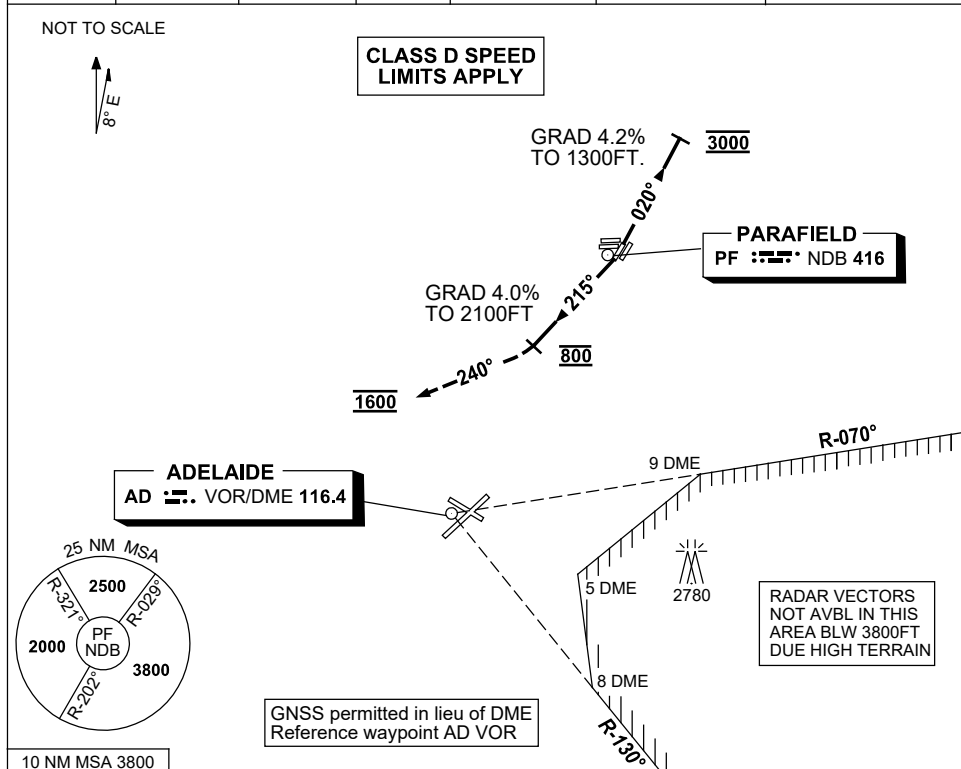
Changes: LIGHTING, Editorial.

PPFAD02-181

**STANDARD INSTRUMENT DEPARTURES (SID)  
PARAFIELD ONE DEP (RADAR) - RWY 03L & 21R  
ADELAIDE/PARAFIELD, SA (YPPF)**

17 JUN 2021

ATIS PF 120.9 416	APP AD 124.2 118.2	TWR PF 118.7 124.6	SMC PF 119.9	FIA (AH) AD CEN 130.45	CTAF+AFRU (AH) 118.7	Bearings are Magnetic Elevations in FEET AMSL
----------------------	-----------------------	-----------------------	-----------------	---------------------------	-------------------------	--



**PARAFIELD ONE DEPARTURE (RADAR)**

**RWY 03L**

- GRAD 4.2% to 1300FT, then 3.3%
- Track 020°
- AT 3000FT turn to assigned heading or track
- Contact Approach when advised by Tower or approaching controlled airspace

**RWY 21R**

- GRAD 4% to 2100FT, then 3.3%
- At DER, turn RIGHT track 215°.
- AT 800FT turn RIGHT track 240°
- AT 1600FT turn to assigned heading
- Contact Approach when advised by Tower or approaching controlled airspace

**COMMUNICATIONS FAILURE PROCEDURE**

On recognition of communication failure

- Squawk 7600
- Maintain last assigned vector for two minutes, and
- CLIMB IF NECESSARY TO MINIMUM SAFE ALTITUDE, to maintain terrain clearance, then
- Proceed in accordance with the latest ATC route clearance acknowledged.

Changes: Editorial.

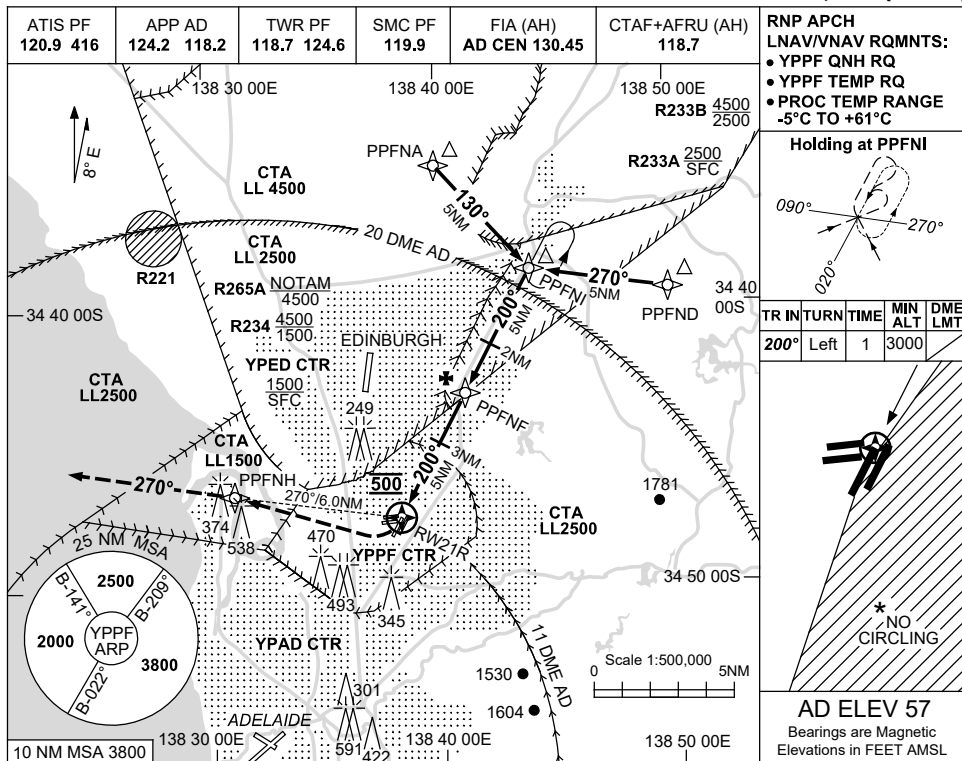
PPFDP01-167

USE QNH

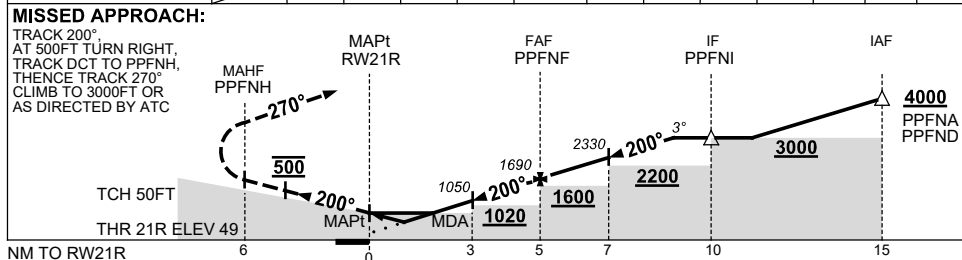
RNP RWY 21R

23 MAR 2023

ADELAIDE/PARAFIELD, SA (YPPF)



NM TO NEXT WPT	RW21R	1.2	1.8	3	4	PPFNF	1	2	3	4	4.1		
ALT (3° APCH PATH)		480	660	1050	1370	1690	2010	2330	2650	2960	3000		



**NOTES**

CATEGORY	A	B	C	D
LNAV/VNAV	480 (431-2.4)		NOT APPLICABLE	
LNAV	660 (611-3.5)			
CIRCLING *	1000 (943-2.4)			
ALTERNATE	(1443-4.4)			

- \* 1. NO CIRCLING EAST OF RWY 03L/21R.
- 2. PROC NOT AVBL FOR TRAINING.

Changes: MISSED APPROACH INSTRUCTION.

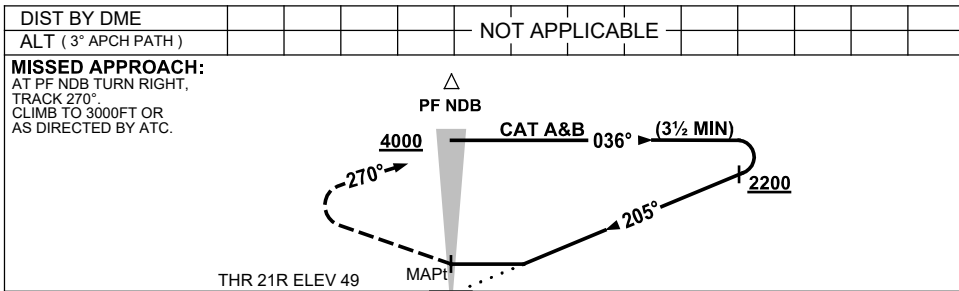
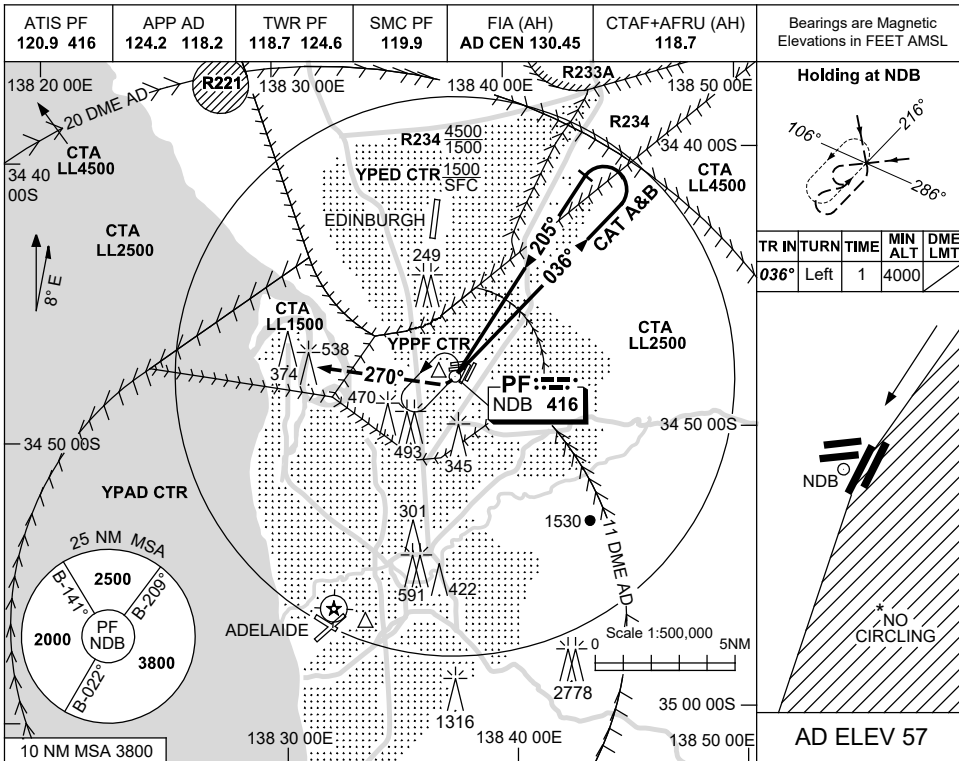
PPFGN01-174

USE QNH

NDB-Y RWY 21R

25 MAR 2021

ADELAIDE/PARAFIELD, SA (YPPF)



NM to AD DME

**NOTES**

CATEGORY	A	B	C	D
S-I NDB	1580 (1531-5.0)		NOT APPLICABLE	
CIRCLING *	1580 (1523-2.4)			
ALTERNATE	(2023-4.4)			

1. MAX IAS:  
 INITIAL:  
 CAT A&B 140KT.  
 HOLDING: 150KT.
- \*2. NO CIRCLING EAST  
 OF RWY 03L/21R.
3. PROC NOT AVBL  
 FOR TRAINING.

Changes: EDINBURGH AIRPORT RWY DEPICTION, COORD FMT, 249FT OBST ADDED, Editorial.

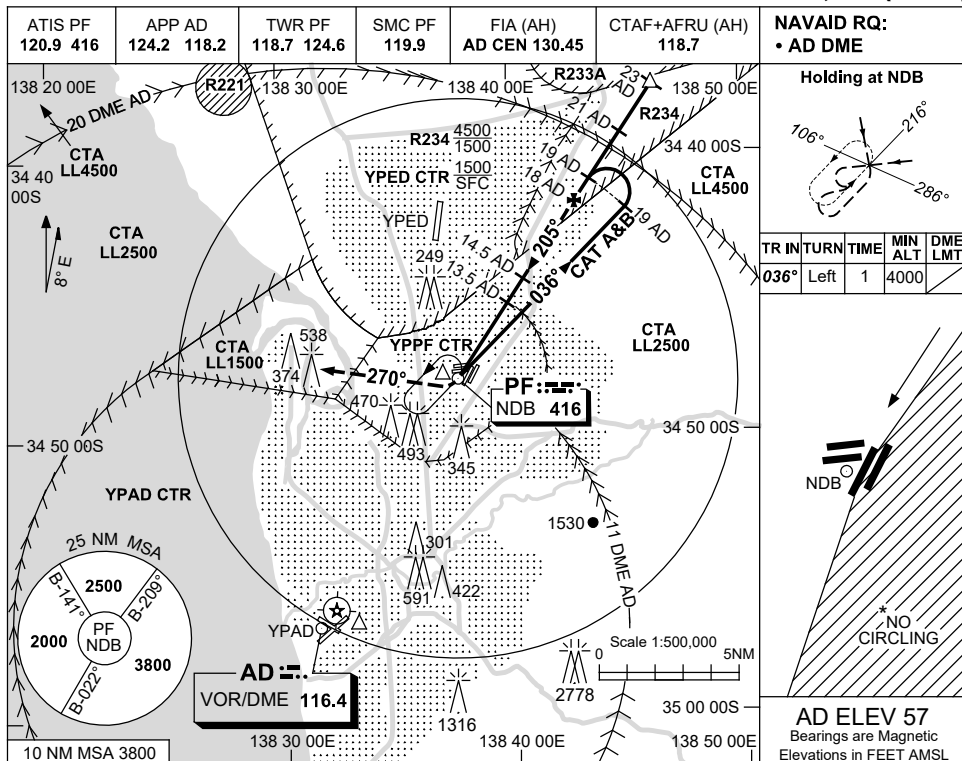
PPFNB01-166

USE QNH

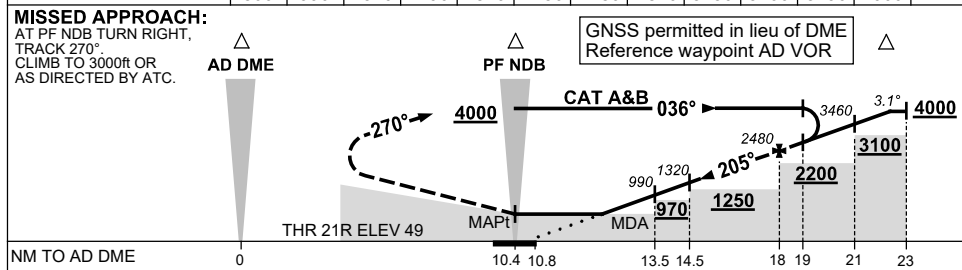
NDB-Z RWY 21R

28 NOV 2024

ADELAIDE/PARAFIELD, SA (YPPF)



DIST BY DME (AD)	13.1	13.5	14.5	15	16	17	18	19	20	21	22	22.6	
ALT( 3.1° APCH PATH )	860	990	1320	1490	1820	2150	2480	2810	3130	3460	3790	4000	



NM to AD DME	0												
NM to THR 21R		0	10.4	10.8	13.5	14.5	18	19	21	23			

**NOTES**

CATEGORY	A	B	C	D
S-I NDB/DME	860 (811-4.6)		NOT APPLICABLE	
CIRCLING *	1000 (943-2.4)			
ALTERNATE	(1443-4.4)			

1. MAX IAS:  
INITIAL:  
CAT A&B 140KT.  
HOLDING: 150KT.
- \*2. NO CIRCLING EAST OF RWY 03L/21R.
3. PROC NOT AVBL FOR TRAINING.

Changes: MIN SEGMENT ALT 18 AD DME TO 14.5 AD DME, Editorial.

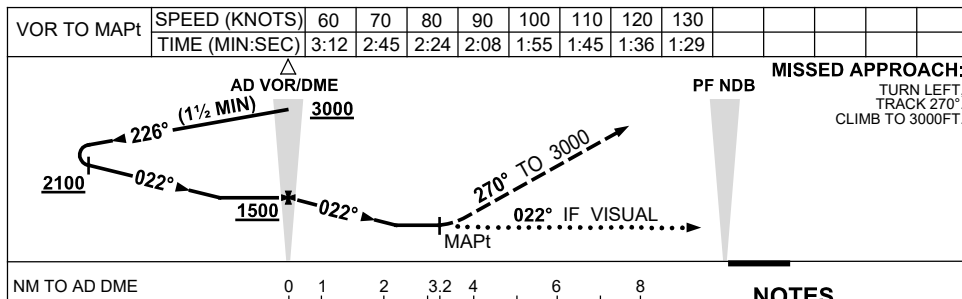
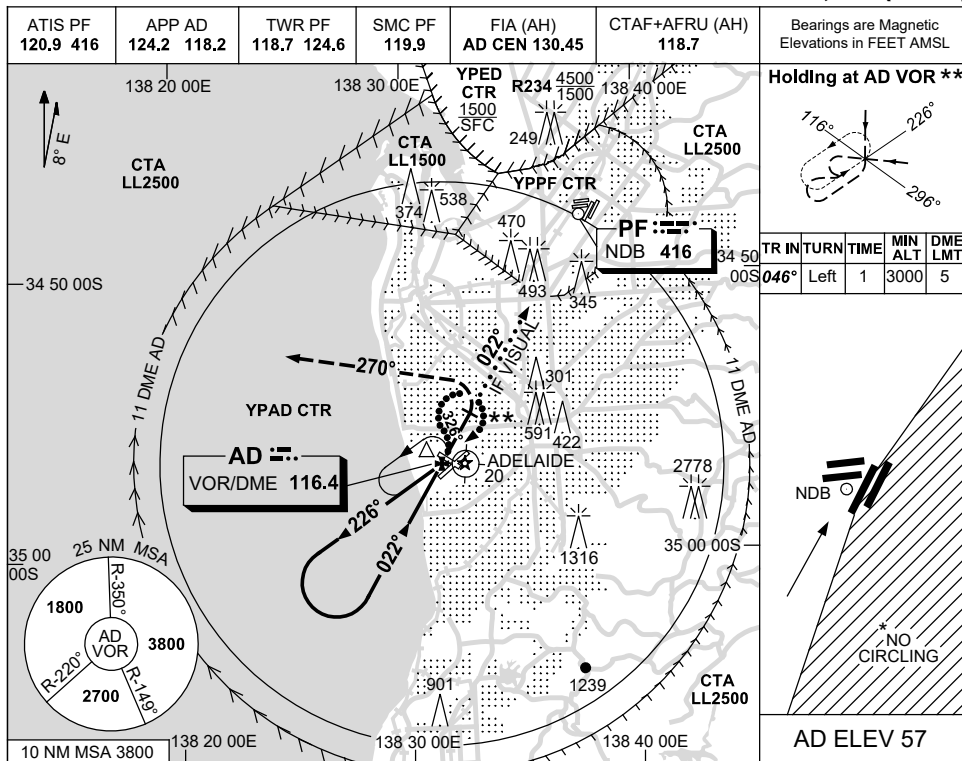
PPFNB02-181

USE QNH

VOR-A

2 DEC 2021

**ADELAIDE/PARAFIELD, SA (YPPF)**



NM TO AD DME	0	1	2	3.2	4	6	8
NM TO PF NDB	10	7.3	5				

CATEGORY	A	B	C	D
			NOT APPLICABLE	
CIRCLING *	1120 (1063-2.4)			
ALTERNATE	(1563-4.4)			

1. MAX IAS:  
APPROACH: 140KT.  
HOLDING : 150KT.
2. ACFT MAY BE RADAR VECTORED TO INTERCEPT FINAL APPROACH AT VOR, 1500FT.
- \* 3. NO CIRCLING EAST OF RWY 03L/21R.
4. PROC NOT AVBL FOR TRAINING.
- \*\* 5. PROC TURN (80°/260°) REQD TO JOIN PROC FROM HOLD.

Changes: PROFILE VIEW DIST.

PPFV001-169