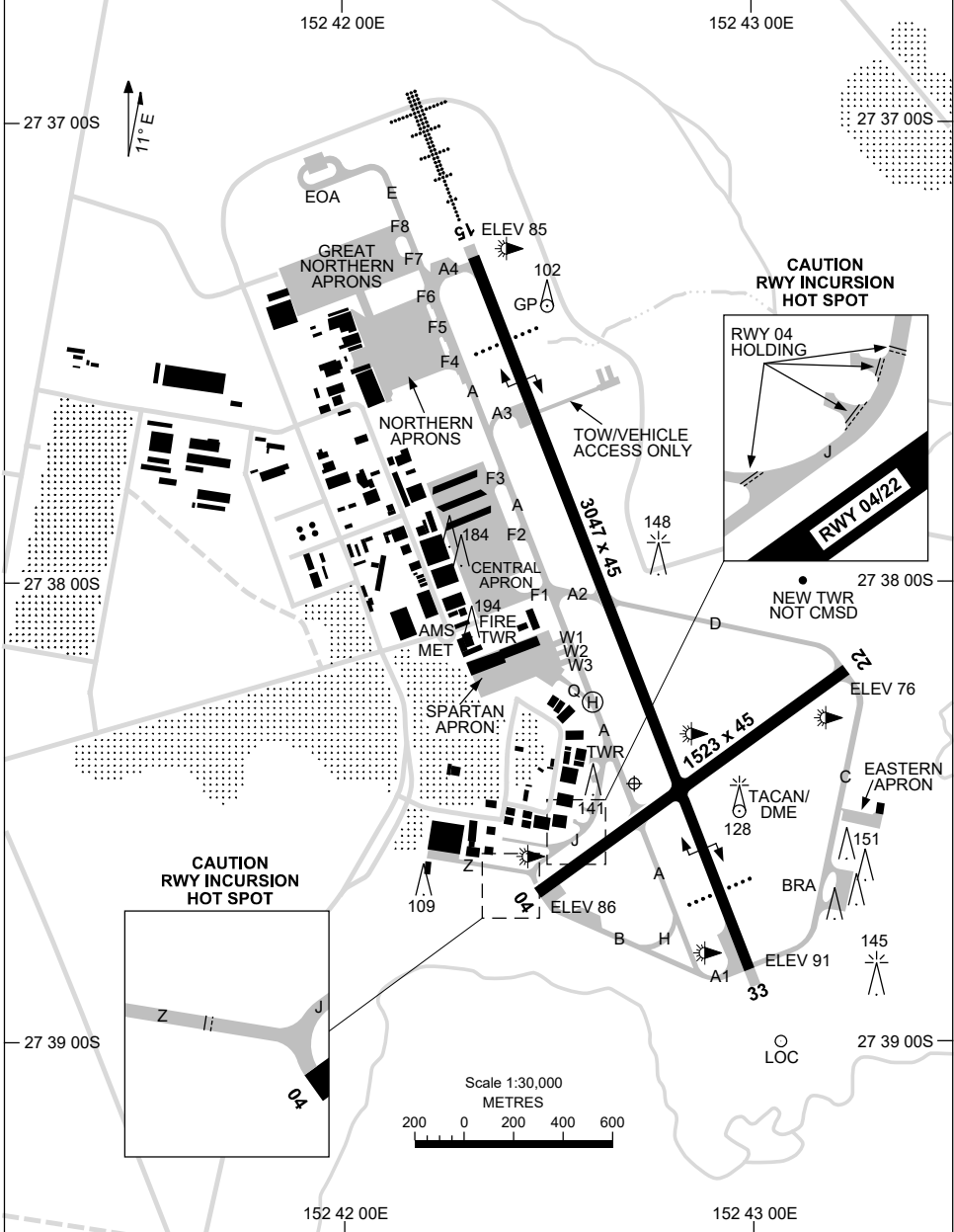


28 NOV 2024

AD ELEV 91
27 38 26S 152 42 43E

AERODROME CHART - Page 1
AMBERLEY, QLD (YAMB)

ATIS 123.3 316.2	AWIS (AH) 316.2	ACD 134.6	SMC 129.35	TWR 118.3 264.6	CTAF+AFRU (AH) AFRU+PAL 118.3	FIA (AH) 121.2	Bearings are Magnetic Elevations in FEET AMSL
---------------------	--------------------	--------------	---------------	--------------------	-------------------------------------	-------------------	--



Changes: Editorial.

AMBAD01-181

28 NOV 2024

AD ELEV 91
27 38 26S 152 42 43E

AERODROME CHART - Page 2
AMBERLEY, QLD (YAMB)

ATIS 123.3 316.2	AWIS (AH) 316.2	ACD 134.6	SMC 129.35	TWR 118.3 264.6	CTAF+AFRU (AH) AFRU+PAL 118.3	FIA (AH) 121.2	Bearings are Magnetic Elevations in FEET AMSL
---------------------	--------------------	--------------	---------------	--------------------	-------------------------------------	-------------------	--

--	--	--	--	--	--	--	--

RWY	AERODROME LIGHTING						
	TAXIWAYS : GREEN CL. NIL ON B, H, J AND Q. RL : MAN , AFRU+PAL 118.3 , SDBY (7 SEC) , PTBL						
04 ⁰⁴³ 223 22	MIRL MIRL						
15 ¹⁴⁸ 328 33	PAPI 3.0° 57FT HIRL HIAL - CAT I SFL PAPI 3.0° 57FT HIRL						

NOTES							
--------------	--	--	--	--	--	--	--

Changes: TWY LIGHTING.

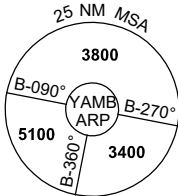
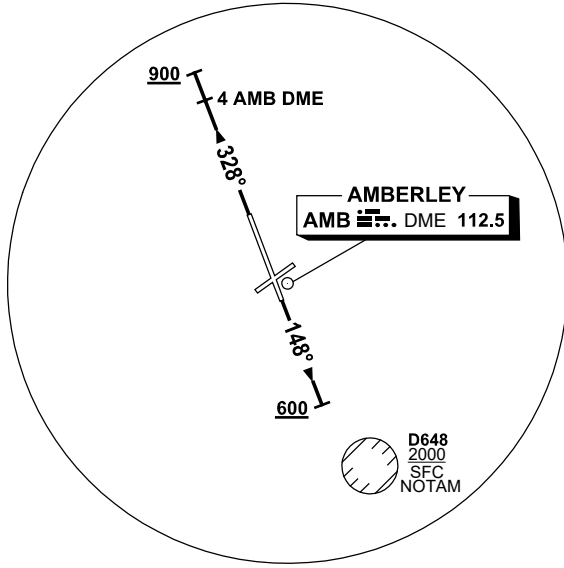
AMBAD02-181

**STANDARD INSTRUMENT DEPARTURES (SID)
AMBERLEY THREE DEPARTURE (RADAR) - RWY 15 & 33
AMBERLEY, QLD (YAMB)**

21 MAR 2024

ATIS 123.3 316.2	AWIS (AH) 316.2	ACD 134.6	SMC 129.35	TWR 118.3 264.6	APP 126.2 335.8	CTAF+AFRU (AH) AFRU+PAL 118.3	FIA (AH) 121.2	Bearings are Magnetic Elevations in FEET AMSL
---------------------	--------------------	--------------	---------------	--------------------	--------------------	-------------------------------------	-------------------	--

NOT TO SCALE



10 NM MSA 3400

AMBERLEY THREE DEPARTURE

RWY 15

- GRAD 4.3% to 2700ft, then 3.3%
- Track 148°
- AT 600ft BUT NOT BEFORE DER, turn to assigned heading or track (NO LEFT TURN BLW 1600ft)

RWY 33

- GRAD 3.9% to 900ft, then 3.3%
- Track 328°
- AT or ABV 900ft BUT NOT BEFORE 4 AMB DME, turn to assigned heading or track

COMMUNICATIONS FAILURE PROCEDURE

On recognition of communication failure

- Squawk 7600
- Maintain last assigned vector for two minutes, and
- CLIMB IF NECESSARY TO MINIMUM SAFE ALTITUDE, to maintain terrain clearance, then
- proceed in accordance with the latest ATC route clearance acknowledged.

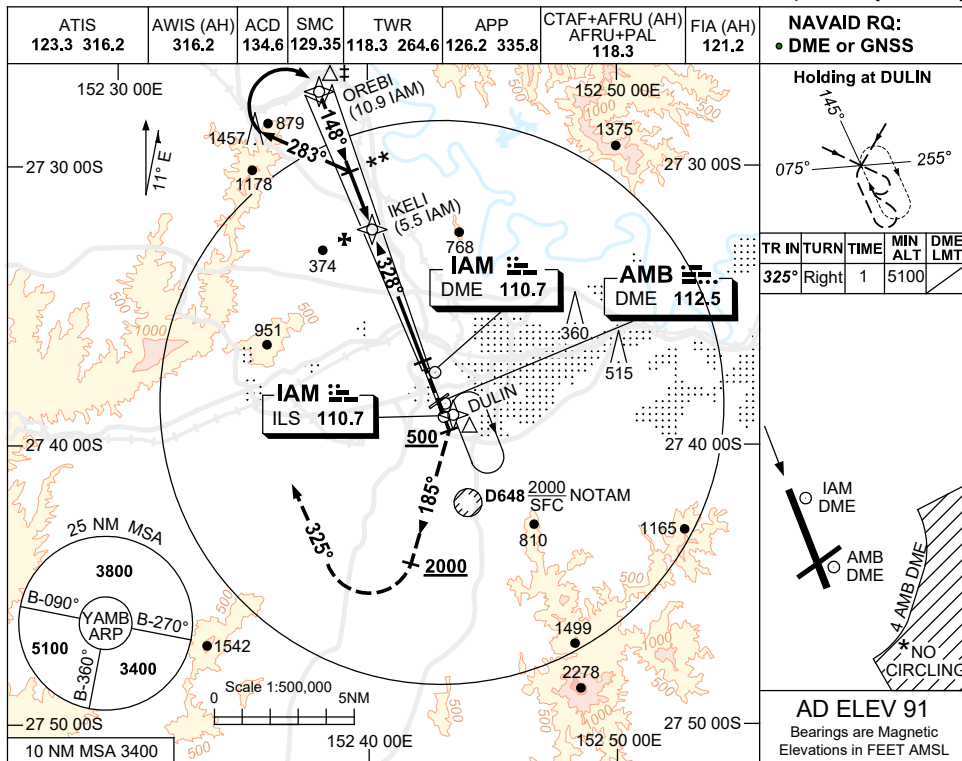
Changes: DME FREQUENCY, Editorial.

AMBDP01-178

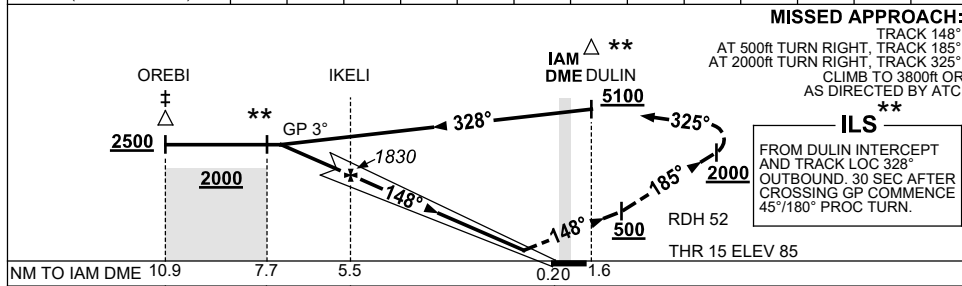
USE QNH

ILS-Z RWY 15
AMBERLEY, QLD (YAMB)

21 MAR 2024



NM TO IAM DME	7.6	7	6	5.5	5	4	3	2	1				
ALT (3° APCH PATH)	2500	2300	1990	1830	1670	1350	1030	710	390				



NM TO IAM DME	10.9	7.7	5.5	0.20	1.6
NM TO THR 15	10.7	7.5	5.3	0	

NOTES

- † ACFT MAY BE RADAR VECTORED TO 10.9 IAM DME IAF.
- * NO CIRCLING SE OF RWY 15/33 AND RWY 04/22 BEYOND 4 AMB DME.
- 3. COLOUR : SEE SPEC NOTICES.

CATEGORY	A	B	C	D
S-I ILS		390 (305) 0.8		
CIRCLING*	860 (769-2.4)	1090 (999-4.0)	1550 (1459-5.0)	
ALTERNATE	(1269-4.4)	(1499-6.0)	(1959-7.0)	

Changes: DME FREQ, VIS, OM/MM REMOVED, FAF WPT, DME REFERENCE, Editorial.

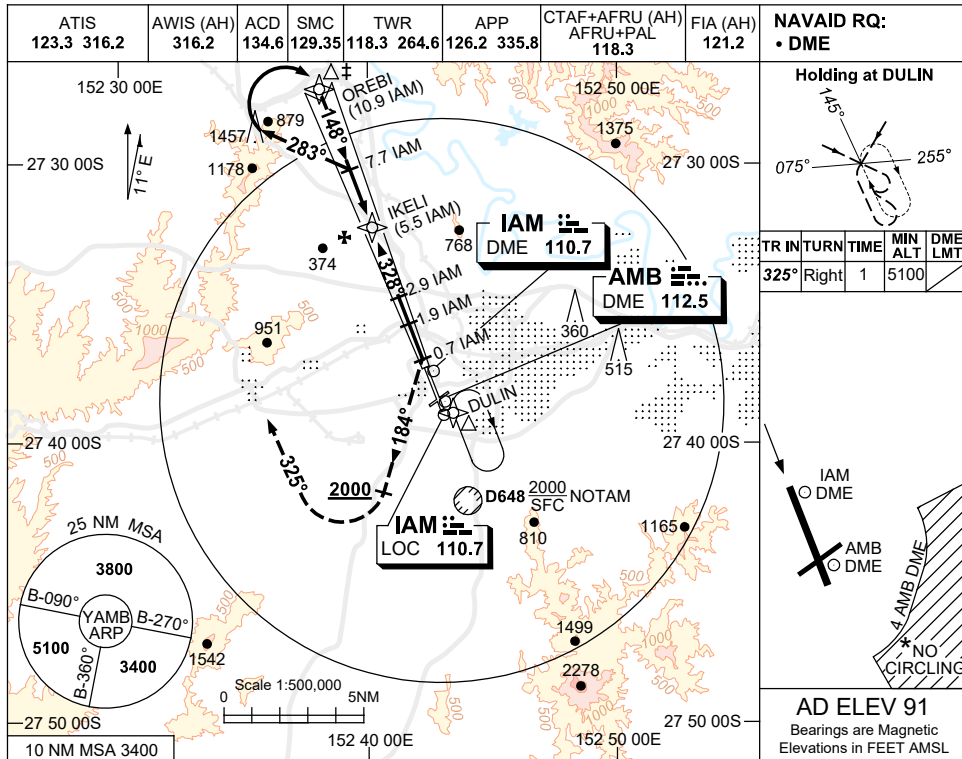
AMBII01-178

USE QNH

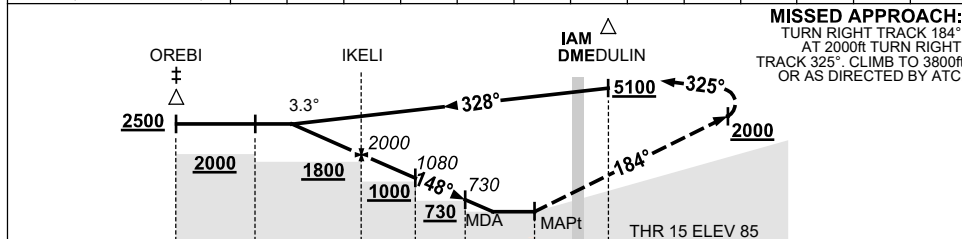
LOC-Z RWY 15

13 JUN 2024

AMBERLEY, QLD (YAMB)



NM TO IAM DME	6.9	6	5.5	5	4	2.9	1.9	1.7				
ALT (3.3° APCH PATH)	2500	2170	2000	1820	1470	1080	730	660				



CATEGORY	A	B	C	D
S-I LOC/DME	660 (569-2.0)			
CIRCLING *	860 (769-2.4)		1090 (999-4.0) 1550(1459-5.0)	
ALTERNATE	(1269-4.4)		(1499-6.0) (1959-7.0)	

NOTES

- ACFT MAY BE RADAR VECTORED TO 10.9 IAM DME IAF.
- APCH PATH ANGLE DOES NOT COINCIDE WITH PAPI ON GLIDE SLOPE INDICATION.
- NO CIRCLING SE OF RWY 15/33 AND RWY 04/22 BEYOND 4 AMB DME.
- COLOUR : SEE SPEC NOTICES.

Changes: S-I LOC/DME MINIMA, DIST/ALT TABLE, Editorial.

AMBLZ01-179