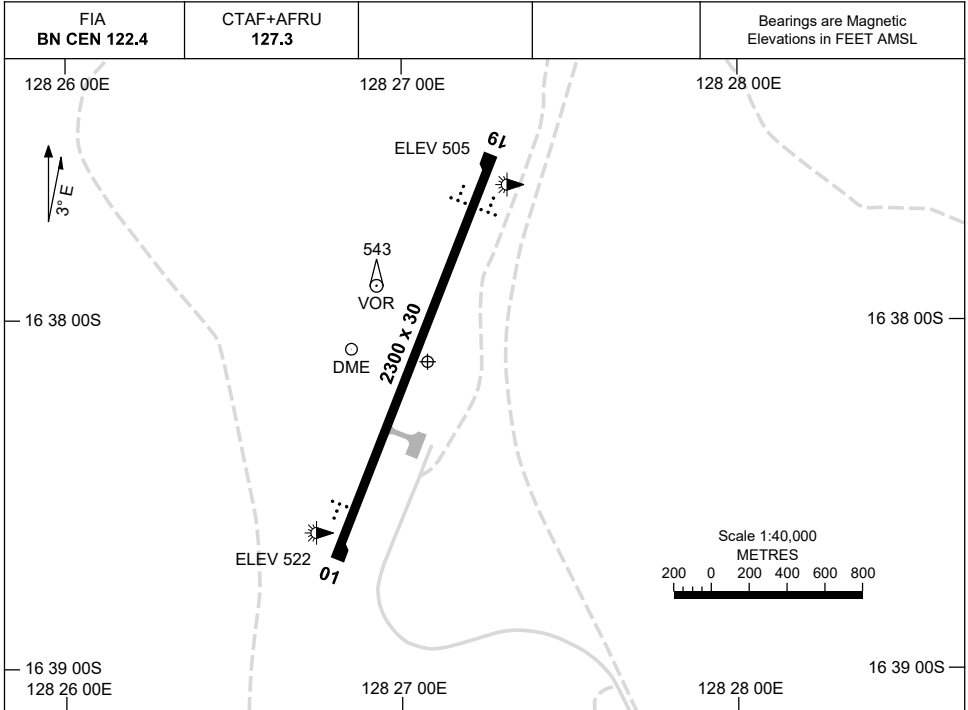


1 DEC 2022

AD ELEV 522
16 38 13S 128 27 05E

AERODROME CHART
ARGYLE, WA (YARG)



	AERODROME LIGHTING
RWY	TAXIWAY : BLUE EDGE RL : MAN ACT PPR ARO , SDBY (27 SEC) , PTBL PPR (ARO : 0404 450 062)
01 <small>019</small> <small>199</small> 19	AT-VASIS LEFT SIDE 3.0° 41FT LIRL T-VASIS 3.0° 41FT LIRL

NOTES

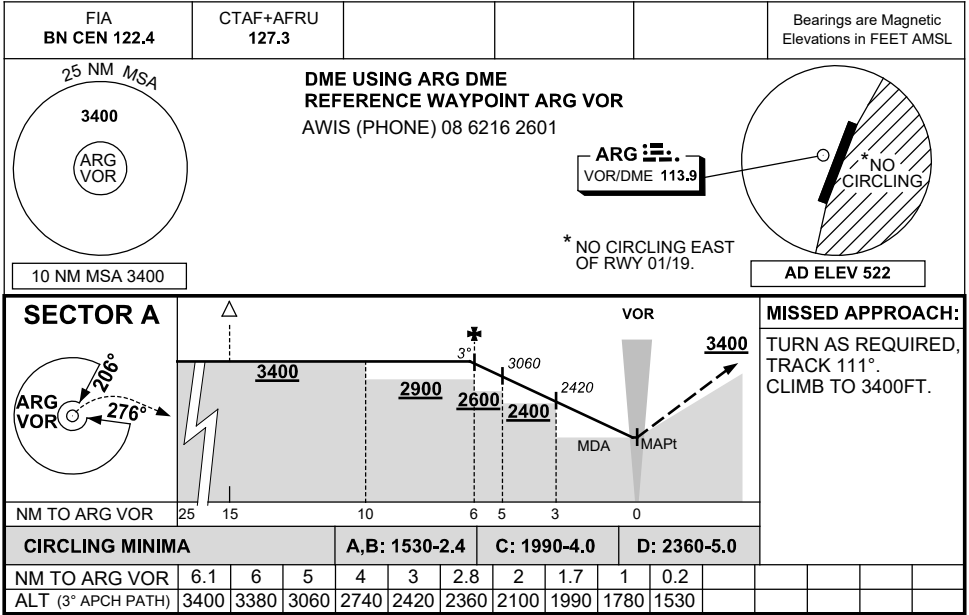
1. AWIS (PHONE) 08 6216 2601
2. FIA FREQ 122.4 BELOW 6000FT NOT AVBL.

Changes: NOTE 2 DELETED.

ARGAD01-173

DME or GNSS ARRIVAL PROCEDURES ARGYLE, WA (YARG)

16 JUN 2022



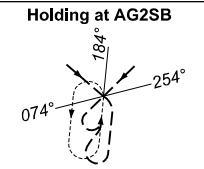
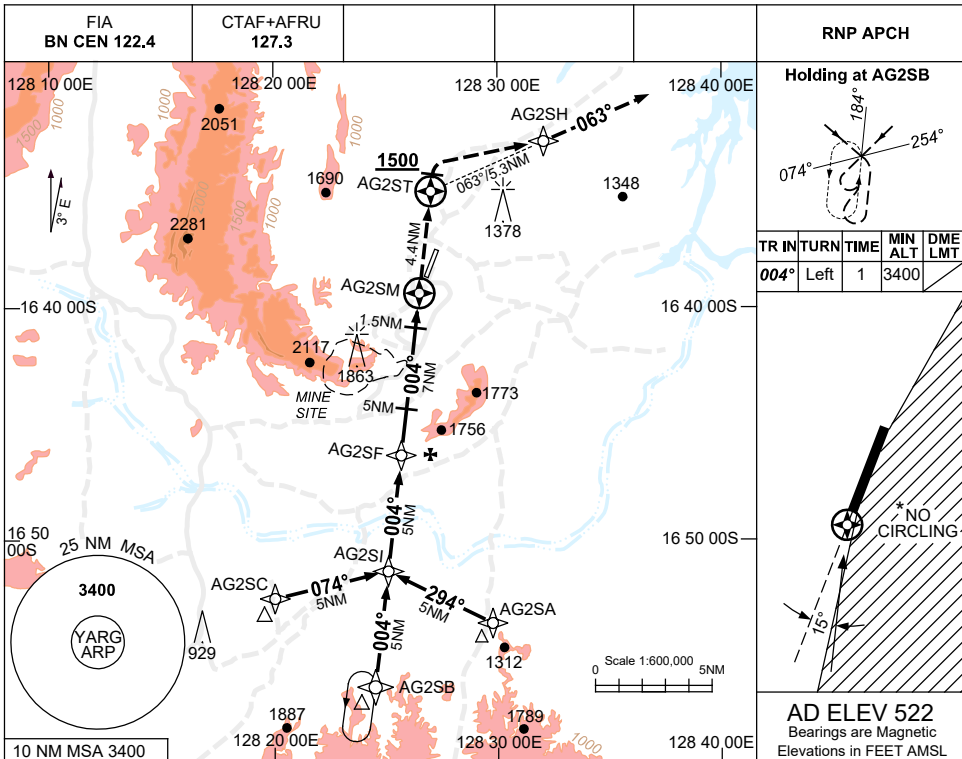
Changes: SECTOR BOUNDARIES, MISSED APCH TRACK.

ARGDG01-171

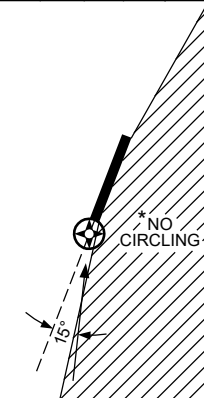
USE QNH

RNP RWY 01
ARGYLE, WA (YARG)

8 SEP 2022

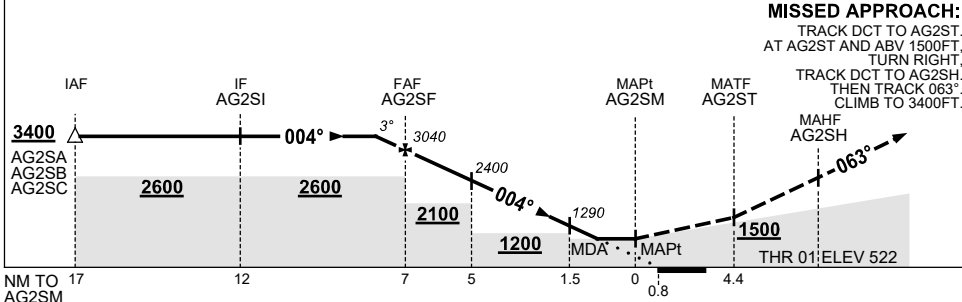


TR	IN	TURN	TIME	MIN	DME
				ALT	LMT
004°	Left	1	3400		



AD ELEV 522
 Bearings are Magnetic
 Elevations in FEET AMSL

NM TO NEXT WPT	1.1	AG2SF	6	5	4	3	2	1.5	0.9	AG2SM
ALT (3° APCH PATH)	3400	3040	2720	2400	2090	1770	1450	1290	1090	



NOTES

CATEGORY	A	B	C	D
LNAV		1090 (568-3.2)		
CIRCLING *	1340 (818-2.4)		1990 (1468-4.0)	2360 (1838-5.0)
ALTERNATE	(1318-4.4)		(1968-6.0)	(2338-7.0)

- MAX IAS: INITIAL : 210KT.
- * NO CIRCLING EAST OF RWY 01/19.
- COLOUR: SEE SPEC NOTICES.
- AWIS (PHONE) 08 6216 2601

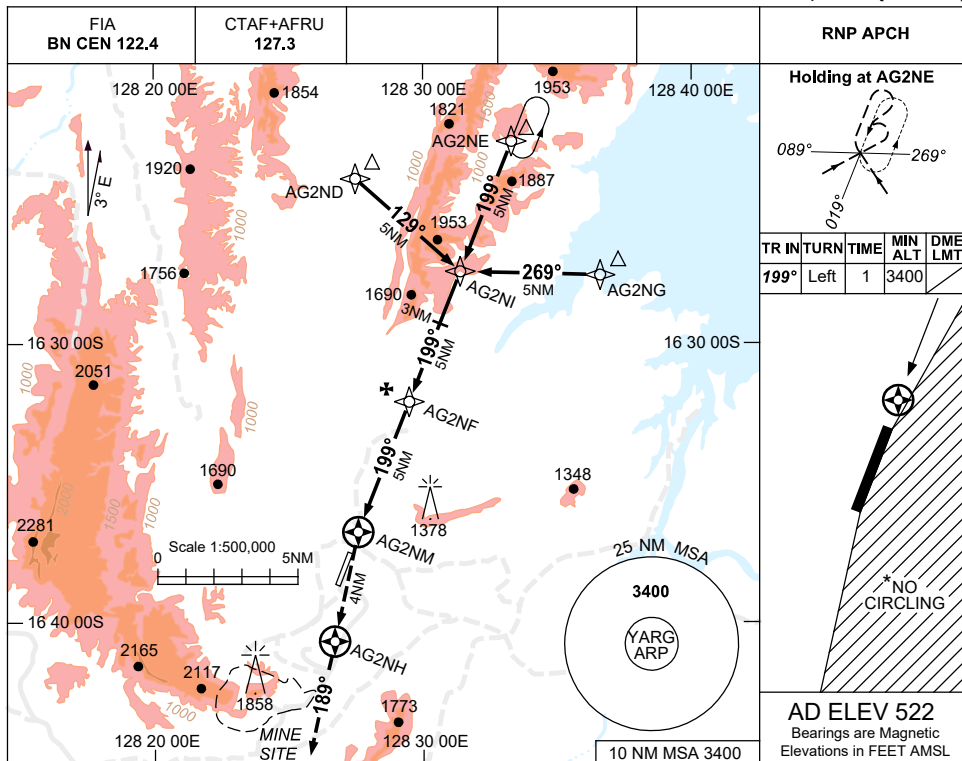
Changes: CHART TITLE, PBN SPECIFICATION BOX.

ARGGN01-172

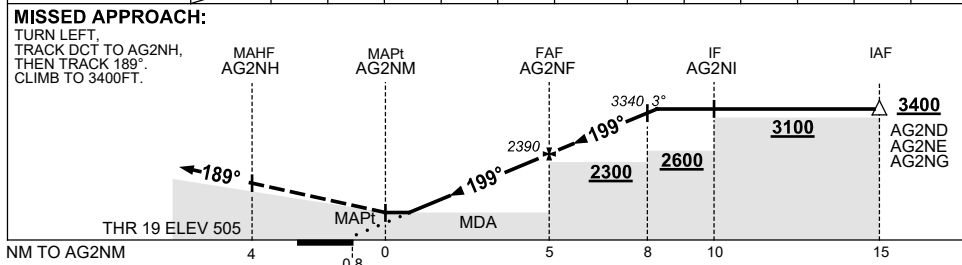
USE QNH

RNP RWY 19
ARGYLE, WA (YARG)

8 SEP 2022



NM TO NEXT WPT	AG2NM	0.5	1	2	3	4	AG2NF	1	2	3.2			
ALT (3° APCH PATH)		960	1110	1430	1750	2070	2390	2710	3030	3400			



NOTES

CATEGORY	A	B	C	D
LNAV	960 (455-2.6)			
CIRCLING*	1340 (818-2.4)	1990 (1468-4.0)	2360 (1838-5.0)	
ALTERNATE	(1318-4.4)	(1968-6.0)	(2338-7.0)	

- MAX IAS: INITIAL : 210KT.
- * NO CIRCLING EAST OF RWY 01/19.
- COLOUR: SEE SPEC NOTICES.
- AWIS (PHONE) 08 6216 2601

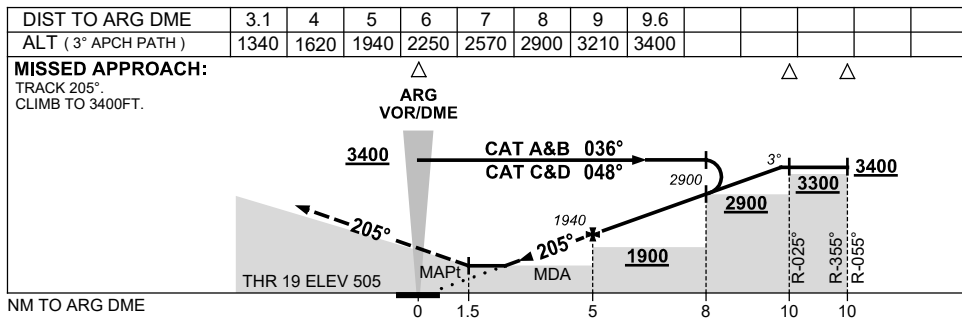
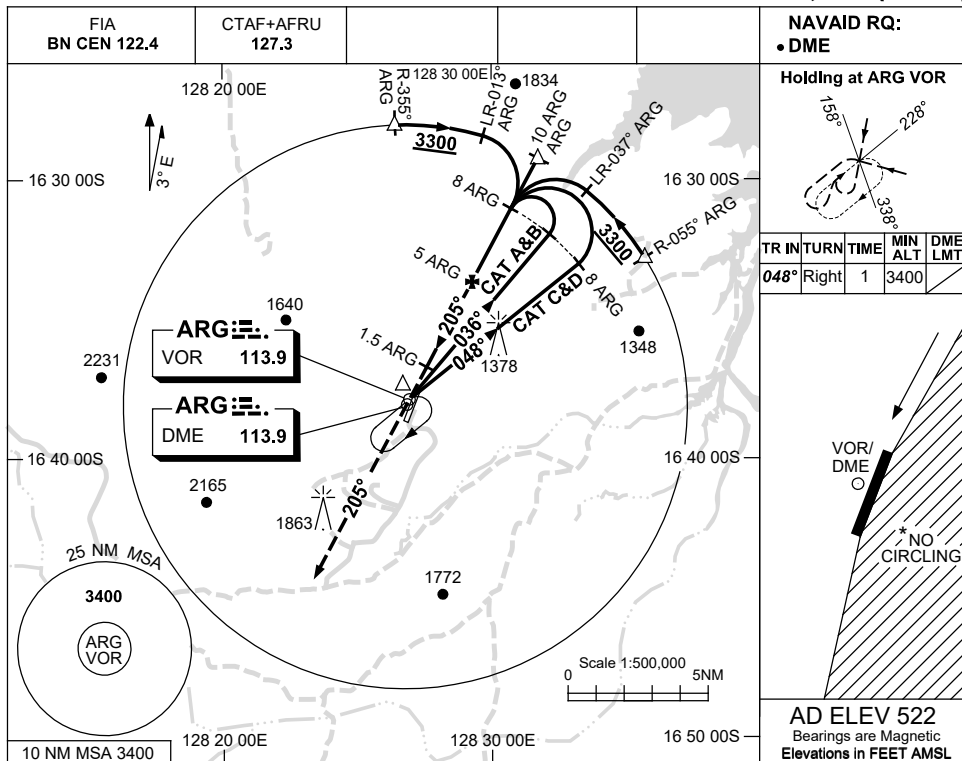
Changes: CHART TITLE, PBN SPECIFICATION BOX.

ARGGN02-172

USE QNH

VOR RWY 19
ARGYLE, WA (YARG)

15 AUG 2019



AD ELEV 522
 Bearings are Magnetic
 Elevations in FEET AMSL

NOTES

CATEGORY	A	B	C	D
S-I VOR/DME	1340 (835-4.8)			
CIRCLING*	1340 (818-2.4)	1990 (1468-4.0)	2360 (1838-5.0)	
ALTERNATE	(1318-4.4)	(1968-6.0)	(2338-7.0)	

1. MAX IAS:
INITIAL : 210KT.
- * 2. NO CIRCLING EAST OF RWY 01/19.
3. AWIS (PHONE)
08 6216 2601

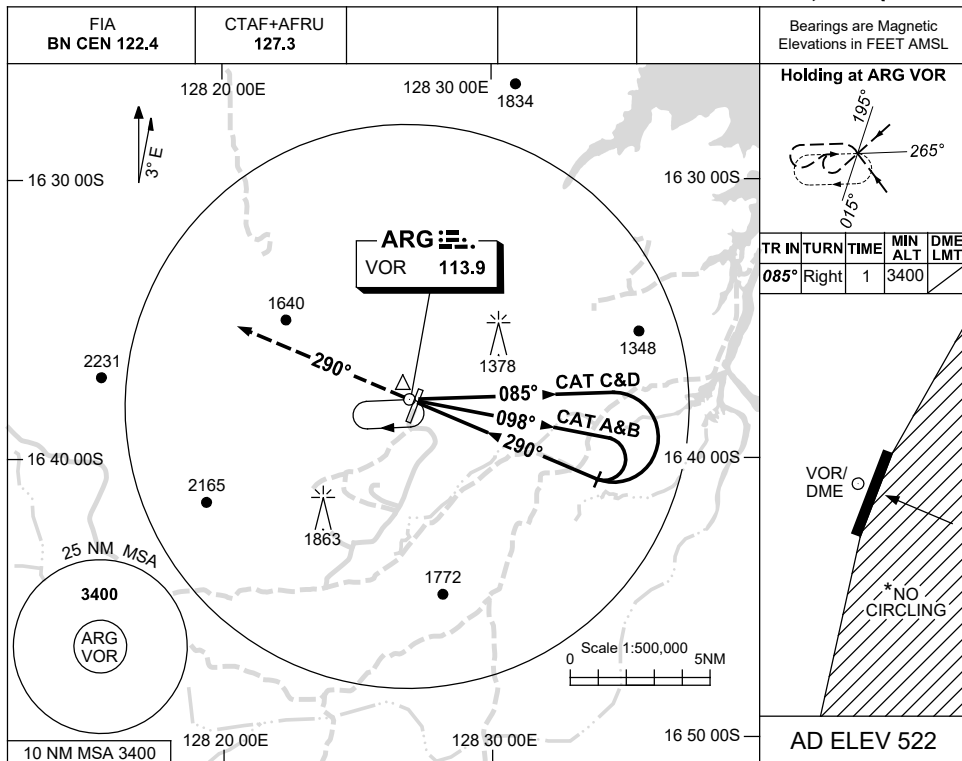
Changes: NOTE 3, COORD FORMAT, Editorial.

ARGV001-160

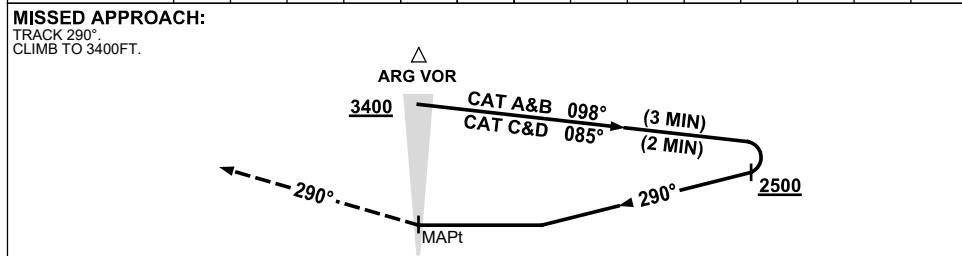
USE QNH

VOR-A
ARGYLE, WA (YARG)

15 AUG 2019



DME DIST	NOT APPLICABLE							
ALT								



NOTES

CATEGORY	A	B	C	D
CIRCLING*	1340 (818-2.4)	1990 (1468-4.0)	2360 (1838-5.0)	
ALTERNATE	(1318-4.4)	(1968-6.0)	(2338-7.0)	

1. MAX IAS:
INITIAL : 210KT.
- * 2. NO CIRCLING EAST OF RWY 01/19.
3. AWIS (PHONE)
08 6216 2601

Changes: NOTE 3, COORD FORMAT, Editorial.

ARGVO02-160