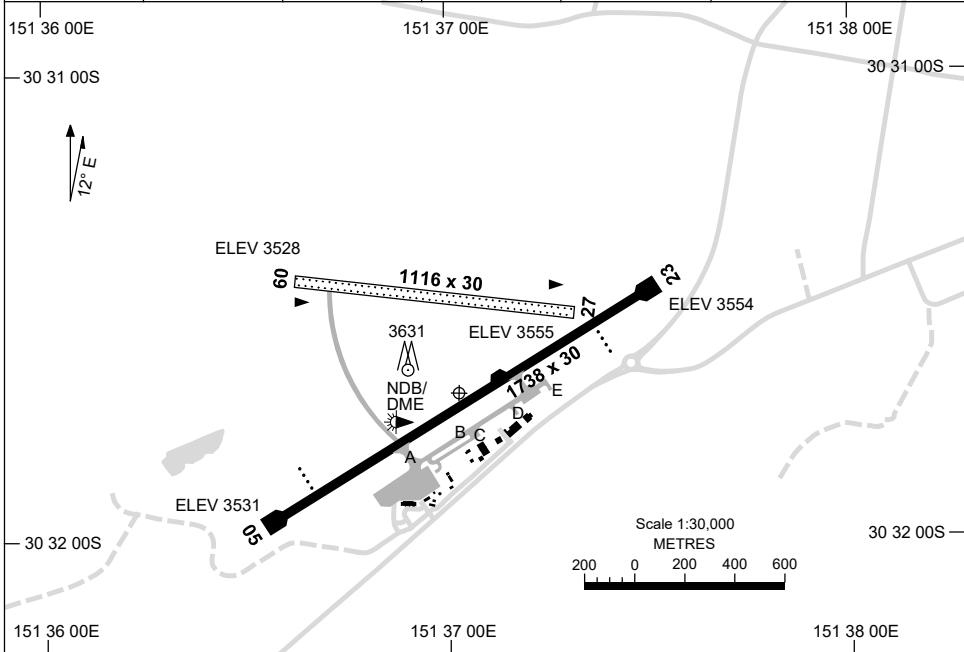


5 SEP 2024

AD ELEV 3556
30 31 41S 151 37 02E

AERODROME CHART
ARMIDALE, NSW (YARM)

AWIS 134.75	FIA BN CEN 125.75	CTAF+AFRU 127.5	AFRU+PAL 127.5		Bearings are Magnetic Elevations in FEET AMSL
----------------	----------------------	--------------------	-------------------	--	--



RWY		AERODROME LIGHTING
		TAXIWAY : BLUE EDGE RL : AFRU+PAL 127.5 , SDBY (15 SEC)
05 ⁰⁴⁷		PAPI 3.0° 47FT MIRL RTIL
227 23		PAPI 3.0° 46FT MIRL RTIL
09 ⁰⁸⁵		NIL
265 27		NIL

NOTES

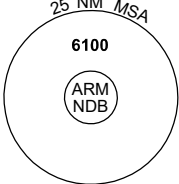
Changes: TWY, Editorial.

ARMAD01-180

DME or GNSS ARRIVAL PROCEDURES ARMIDALE, NSW (YARM)

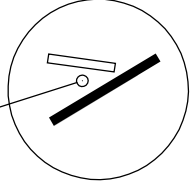
17 JUN 2021

AWIS 134.75	FIA BN CEN 125.75	CTAF+AFRU 127.5	AFRU+PAL 127.5		Bearings are Magnetic Elevations in FEET AMSL
----------------	----------------------	--------------------	-------------------	--	--



25 NM MSA
6100
ARM NDB

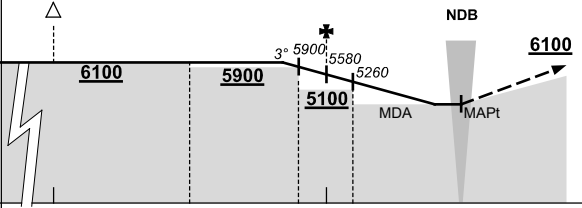
**DME USING ARM DME
REFERENCE WAYPOINT ARM NDB**



10 NM MSA 6000

AD ELEV 3556

ARM	NDB	401			
DME		112.6			

ALL TRACKS TO ARM NDB		MISSED APPROACH: CLIMB ON TRACK TO 6100FT.																			
	NM TO ARM NDB 25 15 10 6 5 4 0	CIRCLING MINIMA			A,B: 4340-2.4		C: 4440-4.0		D: N/A												
	NM TO ARM NDB 6.6 6 5 4 3 2 1.4 1.1	ALT (3° APCH PATH)	6100	5900	5580	5260	4940	4630	4440	4340											

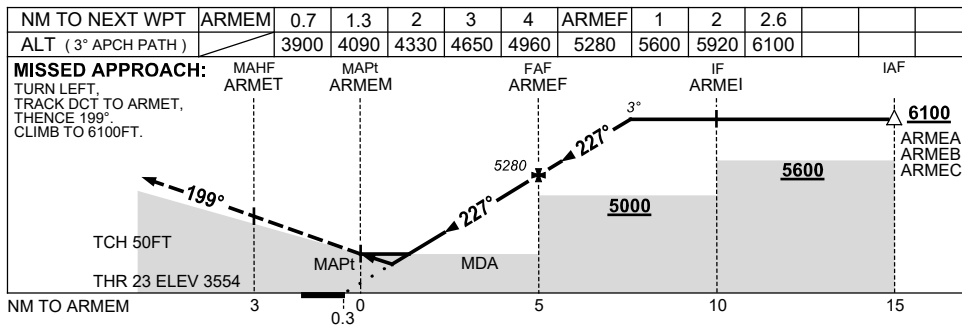
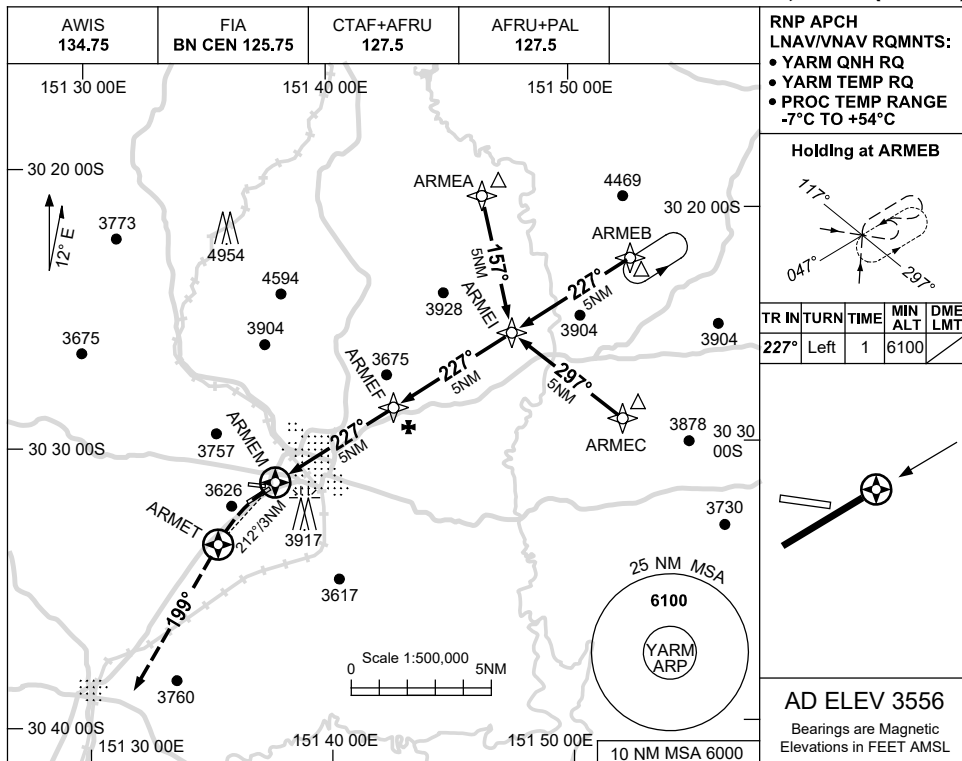
Changes: Editorial.

USE QNH

RNP RWY 23

24 MAR 2022

ARMIDALE, NSW (YARM)



NOTES

- 1. MAX IAS: INITIAL : 210KT.

CATEGORY	A	B	C	D	
LNAV/VNAV	3900 (346-1.9)			NOT APPLICABLE	
LNAV	4090 (534-3.0)				
CIRCLING	4340 (784-2.4)		4440 (884-4.0)		
ALTERNATE	(1284-4.4)		(1384-6.0)		

Changes: ARMEB WPT IDENT CORRECTION IN PROFILE VIEW.

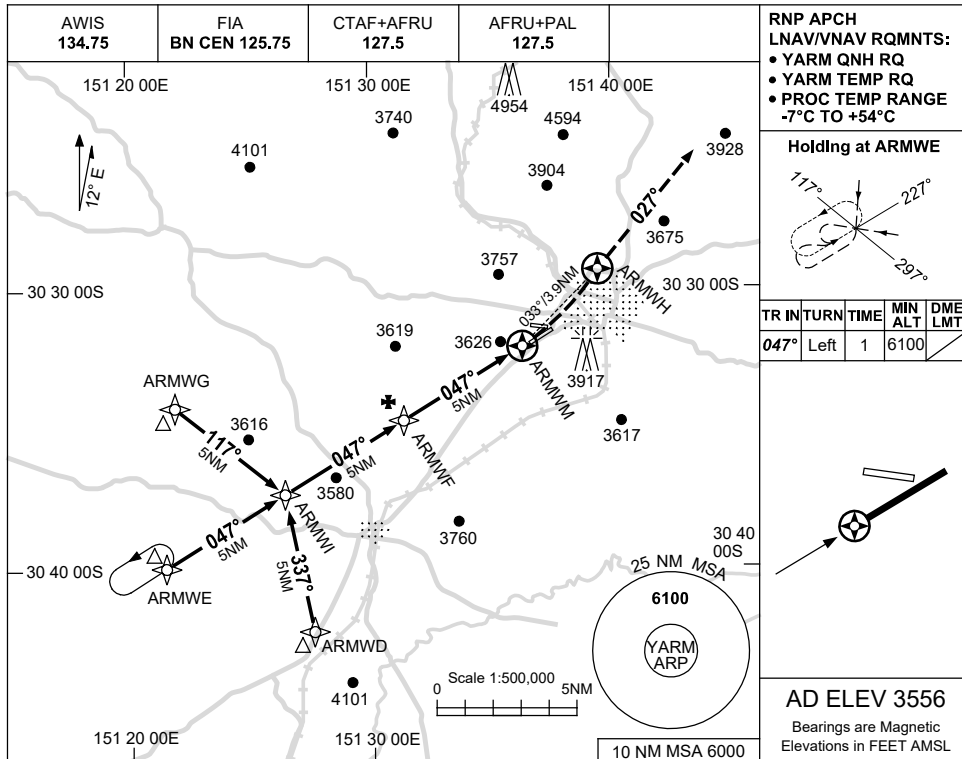
ARMGN01-170

USE QNH

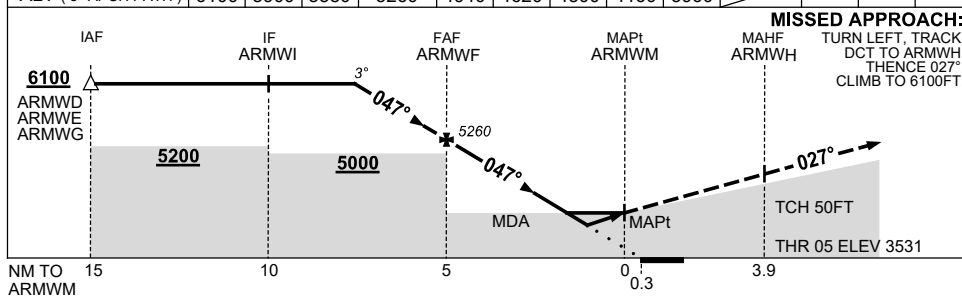
RNP RWY 05

2 DEC 2021

ARMIDALE, NSW (YARM)



NM TO NEXT WPT	2.6	2	1	ARMWF	4	3	2	1.6	0.9	ARMWM			
ALT (3° APCH PATH)	6100	5900	5580	5260	4940	4620	4300	4160	3960				



NOTES

1. MAX IAS:
INITIAL : 210KT.

CATEGORY	A	B	C	D
LNAV/VNAV		3960 (429-2.4)		NOT APPLICABLE
LNAV		4160 (629-3.6)		
CIRCLING	4340 (784-2.4)		4440 (884-4.0)	
ALTERNATE	(1284-4.4)		(1384-6.0)	

Changes: CHART TITLE, PBN SPECIFICATION BOX.

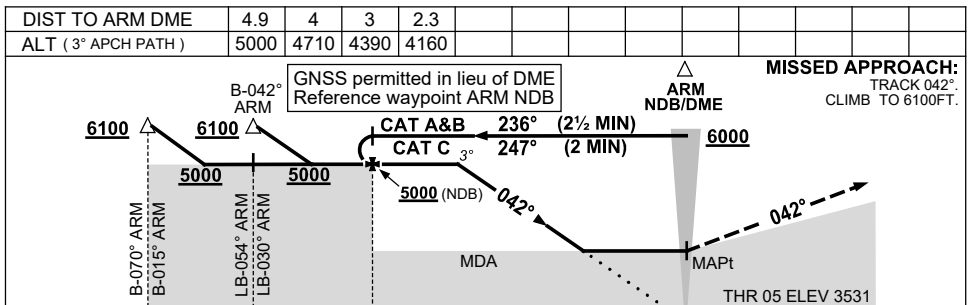
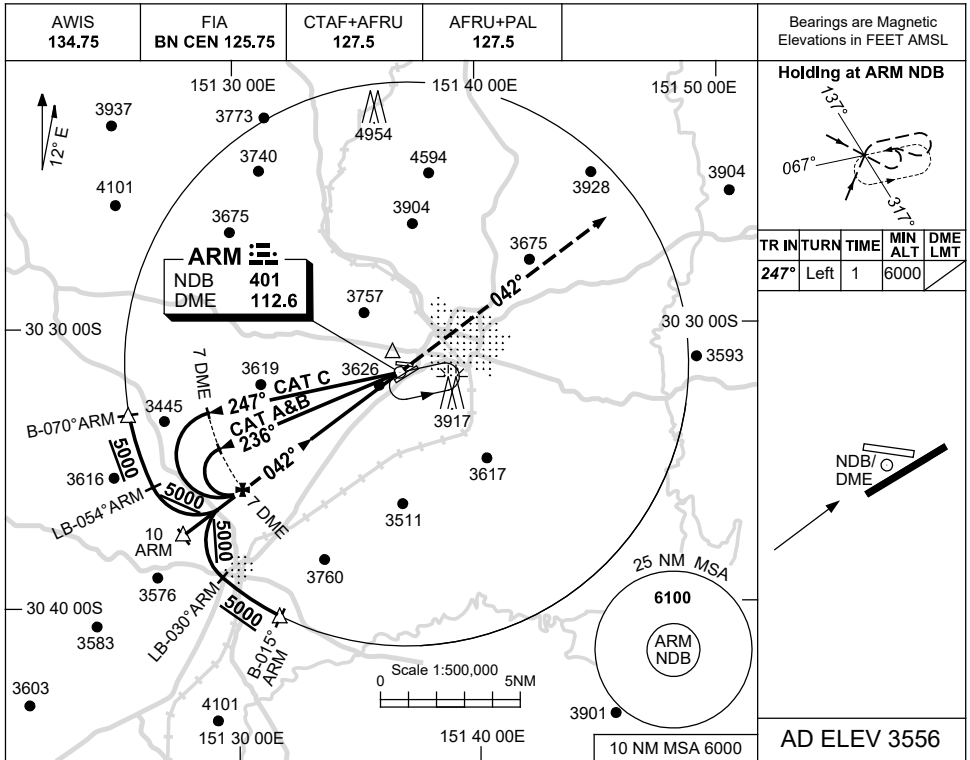
ARMGN02-169

USE QNH

NDB RWY 05

17 JUN 2021

ARMIDALE, NSW (YARM)



CATEGORY	A	B	C	D	
S-I NDB		4210 (679-3.9)			NOT APPLICABLE
S-I NDB/DME		4160 (629-3.6)			
CIRCLING	4340 (784-2.4)		4440 (884-4.0)		
ALTERNATE	(1284-4.4)		(1384-6.0)		

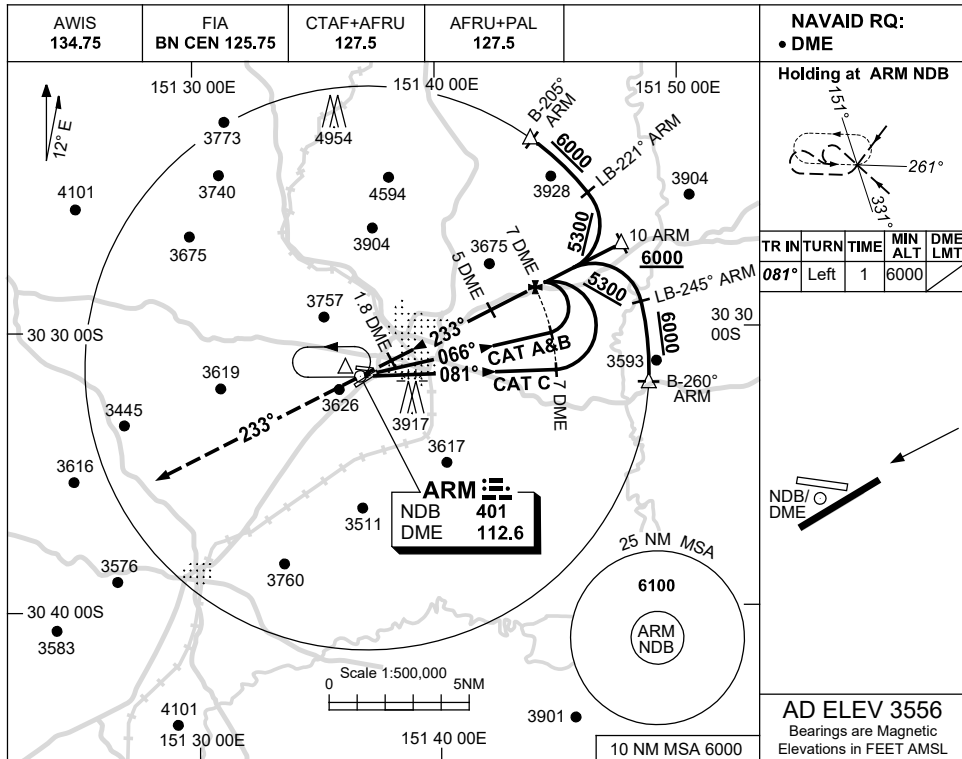
1. MAX IAS:
INITIAL : 210KLT.

Changes: COORD FMT, Editorial. ARMNB01-167

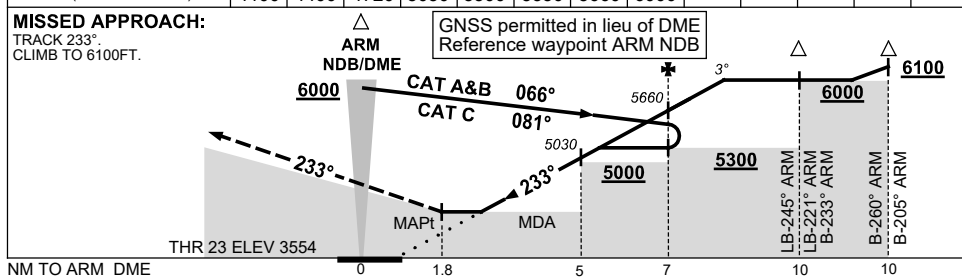
USE QNH

NDB RWY 23
ARMIDALE, NSW (YARM)

17 JUN 2021



DIST TO ARM DME	2.1	3	4	5	5.8	6	7	8						
ALT (3° APCH PATH)	4100	4400	4720	5030	5300	5350	5660	6000						



NOTES

CATEGORY	A	B	C	D
S-I NDB/DME	4100 (544-3.1)			NOT APPLICABLE
CIRCLING	4340 (784-2.4)	4440 (884-4.0)		
ALTERNATE	(1284-4.4)		(1384-6.0)	

1. MAX IAS:
 INITIAL : 210KT.

Changes: COORD FMT, Editorial.

ARMNB02-167