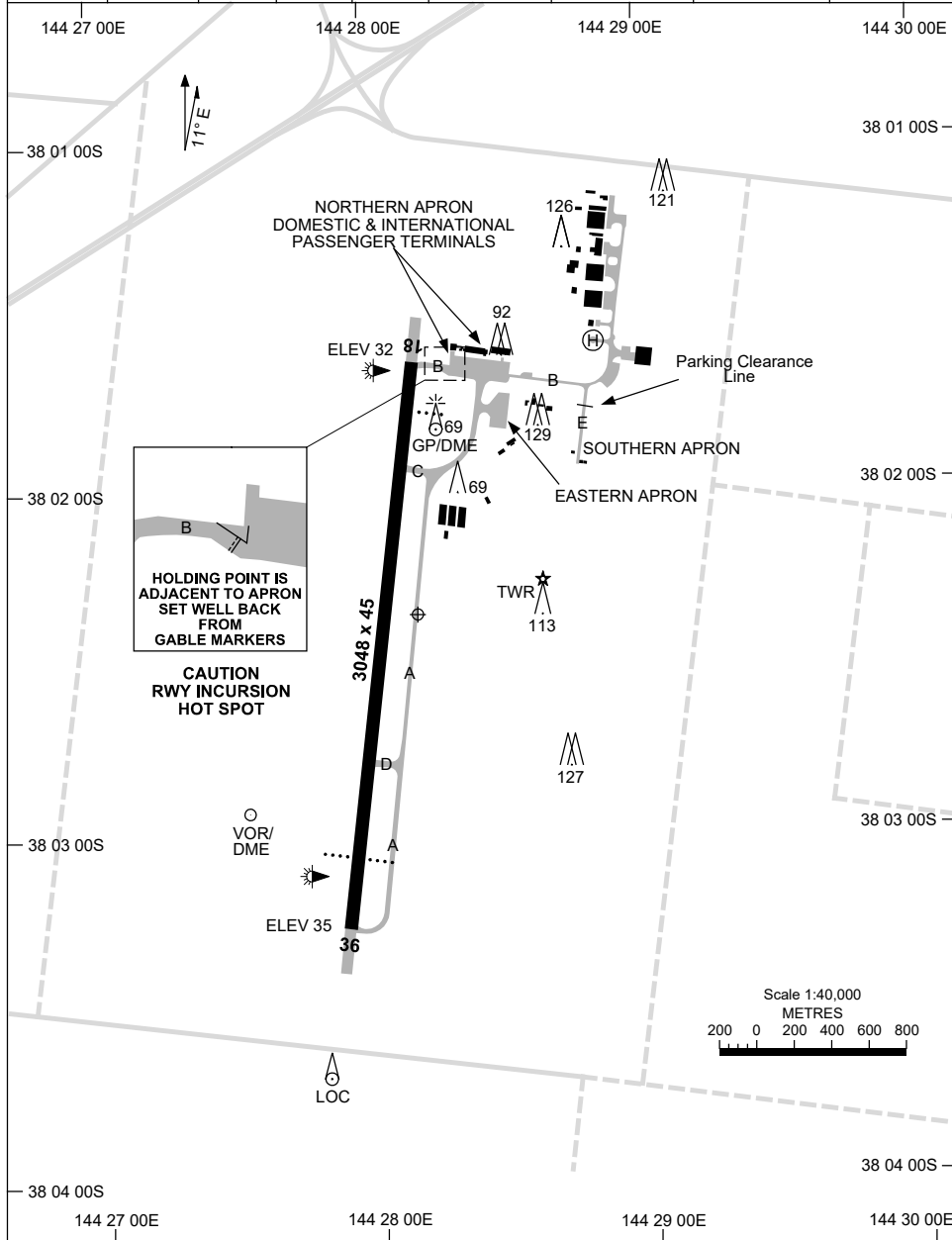


28 NOV 2024

AD ELEV 35
38 02 22S 144 28 10E

AERODROME CHART - Page 1
AVALON, VIC (YMAV)

| | | | | | | | | |
|---------------------|--------------------|------------------|--------------|-----------------|--------------------------|-------------------------|------------------------|--------------------------------|
| ATIS 118.2 116.1 | AWIS (AH) 116.1 | AV APP 133.55 | TWR 120.1 | UNICOM 129.3 | FIA (AH) ML CEN 135.7 | CTAF+AFRU (AH) 120.1 | AFRU+PAL (AH) 120.1 | BRG are MAG ELEV in FT AMSL |
|---------------------|--------------------|------------------|--------------|-----------------|--------------------------|-------------------------|------------------------|--------------------------------|



Changes: Editorial.

MAVAD01-181

15 JUN 2023

AD ELEV 35
38 02 22S 144 28 10E

AERODROME CHART - Page 2
AVALON, VIC (YMAV)

| | | | | | | | | |
|---------------------|--------------------|------------------|--------------|-----------------|--------------------------|-------------------------|------------------------|--------------------------------|
| ATIS 118.2 116.1 | AWIS (AH) 116.1 | AV APP 133.55 | TWR 120.1 | UNICOM 129.3 | FIA (AH) ML CEN 135.7 | CTAF+AFRU (AH) 120.1 | AFRU+PAL (AH) 120.1 | BRG are MAG ELEV in FT AMSL |
|---------------------|--------------------|------------------|--------------|-----------------|--------------------------|-------------------------|------------------------|--------------------------------|

| | | | | | | | | |
|--|--|--|--|--|--|--|--|--|
| | | | | | | | | |
|--|--|--|--|--|--|--|--|--|

| | |
|--|---------------------------|
| | AERODROME LIGHTING |
|--|---------------------------|

| | |
|------------|--|
| RWY | ABN : FLG W 4 SEC TAXIWAY : GREEN CENTRELINE RL : MAN , AFRU+PAL (AH) 120.1 , 1 SEC DURING LVP ; 15 SEC OT |
|------------|--|

| | |
|--------------------------|--------------------------------|
| 18 ¹⁷⁶ | PAPI LEFT SIDE 3.0° 69FT MIRL |
| ³⁵⁶ 36 | PAPI BOTH SIDES 3.0° 65FT MIRL |

| | |
|--|--|
| | |
|--|--|

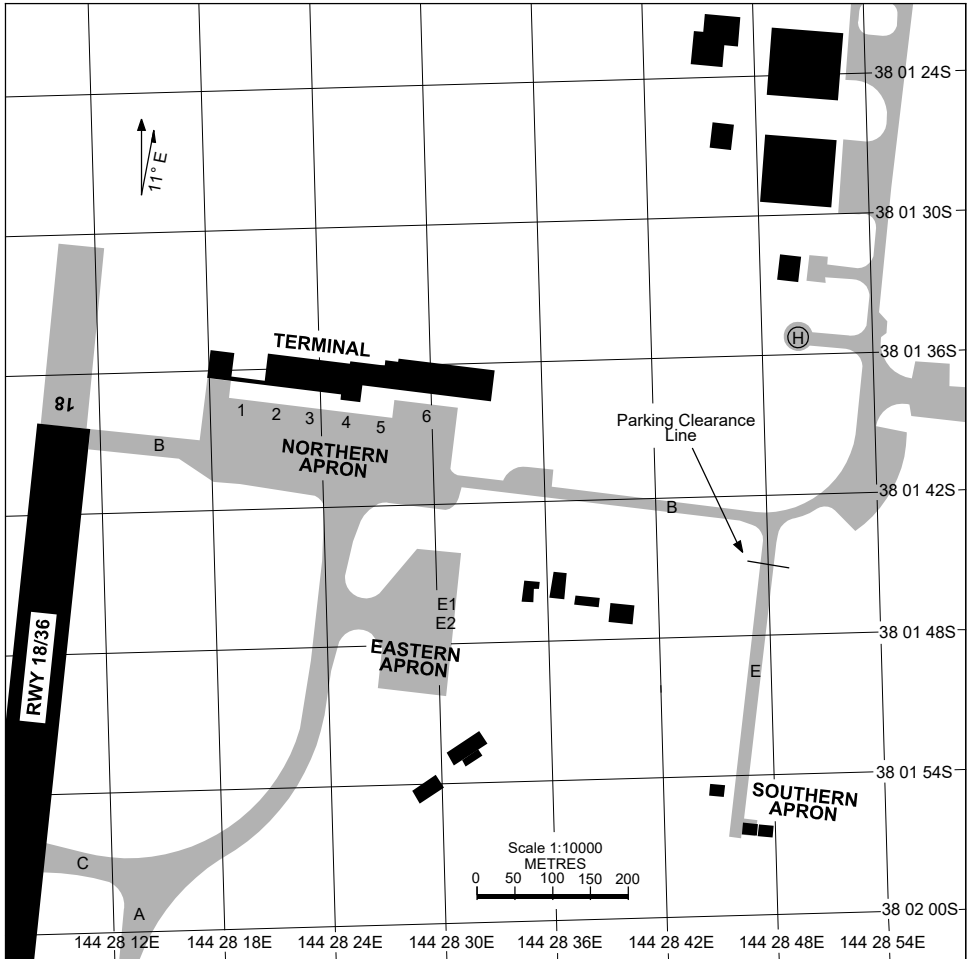
NOTES

Changes: REMOVED NOTES.

MAVAD02-175

21 MAR 2024

APRON CHART
AVALON, VIC (YMAV)



PARKING POSITION INFORMATION

| BAYS | CO-ORDINATES | ELEV (ft) | CAPACITY | HYDRANT FUEL | DOCKING SYSTEM |
|------|----------------------------|-----------|-----------|--------------|----------------|
| 1 | 38 01 37.31S 144 28 19.78E | 30 | A320/A321 | JET A1 | |
| 2 | 38 01 37.51S 144 28 21.65E | 31 | A320 | JET A1 | |
| 3 | 38 01 37.70S 144 28 23.44E | 31 | A320 | JET A1 | |
| 4 | 38 01 37.92S 144 28 25.48E | 31 | A320/A321 | JET A1 | |
| 5 | 38 01 38.24S 144 28 27.26E | 31 | A321 | JET A1 | |
| 6 | 38 01 38.16S 144 28 29.78E | 32 | A333/B748 | JET A1 | |
| E1 | 38 01 46.27S 144 28 30.53E | 31 | B748 | JET A1 | |
| E2 | 38 01 47.10S 144 28 30.37E | 31 | B748 | JET A1 | |

Changes: PARKING CLEARANCE LINE ADDED, Editorial.

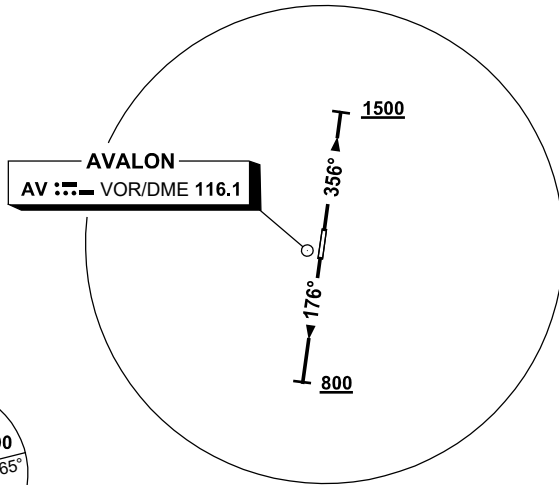
MAVAP01-178

**STANDARD INSTRUMENT DEPARTURES (SID)
 AVALON FIVE DEPARTURE (RADAR)
 AVALON, VIC (YMAV)**

24 MAR 2022

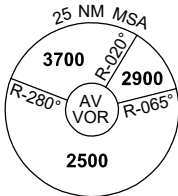
| | | | | | | | |
|---------------------|--------------------|------------------|--------------|--------------------------|-------------------------|------------------------|--|
| ATIS 118.2 116.1 | AWIS (AH) 116.1 | AV APP 133.55 | TWR 120.1 | FIA (AH) ML CEN 135.7 | CTAF+AFRU (AH) 120.1 | AFRU+PAL (AH) 120.1 | Bearings are Magnetic Elevations in FEET AMSL |
|---------------------|--------------------|------------------|--------------|--------------------------|-------------------------|------------------------|--|

NOT TO SCALE



**SPEED
 MAX IAS 250KT
 BELOW 10,000ft**

**CLASS D SPEED
 LIMITS APPLY**



10 NM MSA 2500

GRAD 3.3%

AVALON FIVE DEPARTURE (RADAR)

RWY 18

- Track 176°
- At or ABV 800ft turn to assigned heading or track
- Contact AV Approach for Radar Vector

RWY 36

- Track 356°
- At or ABV 1500ft turn to assigned heading or track
- Contact AV Approach for Radar Vector

COMMUNICATIONS FAILURE PROCEDURE

On recognition of communication failure

- Squawk 7600
- Maintain last assigned vector for two minutes, and
- CLIMB IF NECESSARY TO MINIMUM SAFE ALTITUDE, to maintain terrain clearance, then
- proceed in accordance with the latest ATC route clearance acknowledged.

**STANDARD INSTRUMENT DEPARTURES (SID)
JUSTY THREE DEPARTURE (RNAV)
AVALON, VIC (YMAV)**

21 MAR 2024

| | | | | | | | |
|---------------------|--------------------|------------------|--------------|--------------------------|-------------------------|------------------------|--|
| ATIS 118.2 116.1 | AWIS (AH) 116.1 | AV APP 133.55 | TWR 120.1 | FIA (AH) ML CEN 135.7 | CTAF+AFRU (AH) 120.1 | AFRU+PAL (AH) 120.1 | Bearings are Magnetic Elevations in FEET AMSL |
|---------------------|--------------------|------------------|--------------|--------------------------|-------------------------|------------------------|--|

NOT TO SCALE

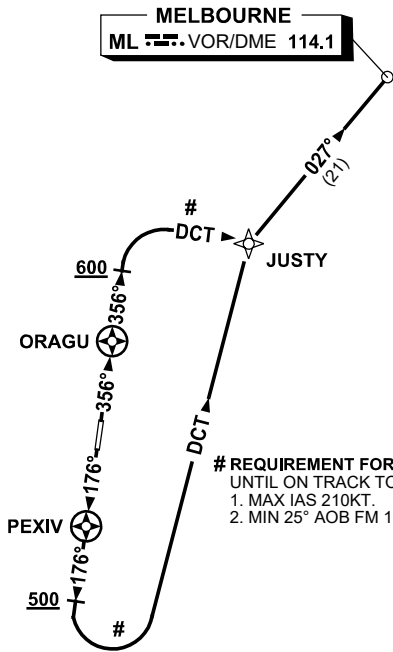


MELBOURNE
ML VOR/DME 114.1

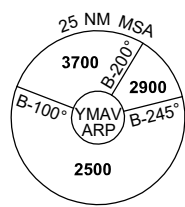
SPEED
MAX IAS 250KT
BLW 10,000FT

CLASS D SPEED
LIMITS APPLY

RNP1



REQUIREMENT FOR AIRSPACE CONTAINMENT
UNTIL ON TRACK TO JUSTY:
1. MAX IAS 210KT.
2. MIN 25° AOB FM 160KT TO 210KT.



10 NM MSA 2500

JUSTY THREE DEPARTURE

RWY 18

- GRAD 3.3%
- Track 176°
- AT or ABV 500ft but not before PEXIV
turn LEFT, track DCT to JUSTY #
- Turn RIGHT, track 027° to ML,
thence as cleared

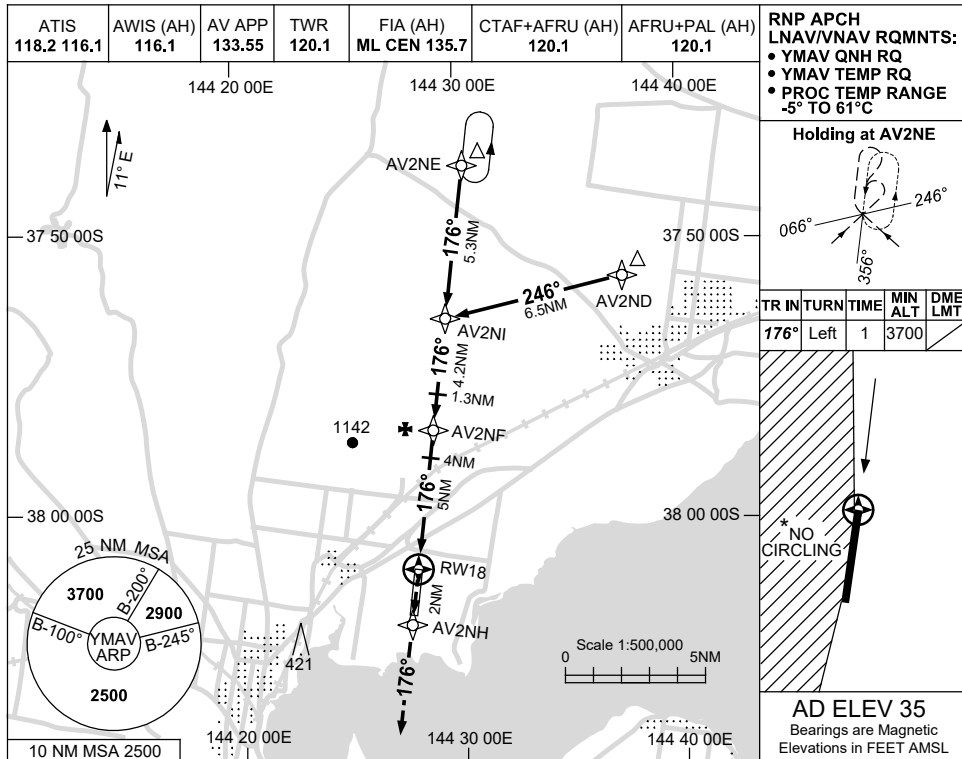
RWY 36

- GRAD 3.3%
- Track 356°
- AT or ABV 600ft but not before ORAGU
turn RIGHT, track DCT to JUSTY #
- Turn LEFT, track 027° to ML,
thence as cleared

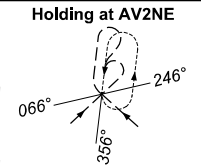
USE QNH

RNP RWY 18
AVALON, VIC (YMAV)

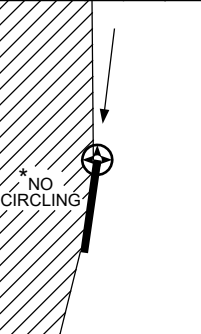
30 NOV 2023



RNP APCH
 LNAV/VNAV RQMNTS:
 • YMAV QNH RQ
 • YMAV TEMP RQ
 • PROC TEMP RANGE
 -5° TO 61°C

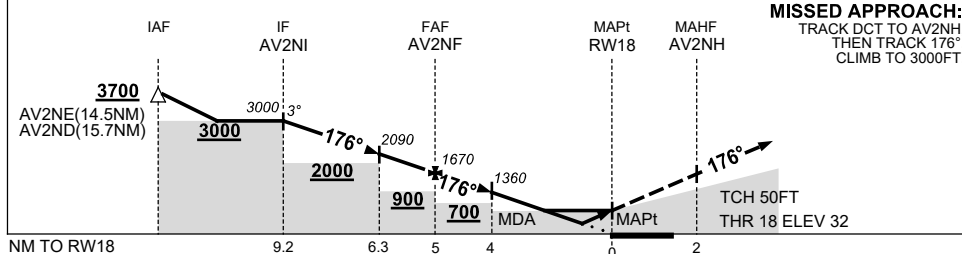


| TR | TURN | TIME | MIN ALT | DME LMT |
|------|------|------|---------|---------|
| 176° | Left | 1 | 3700 | |



AD ELEV 35
 Bearings are Magnetic
 Elevations in FEET AMSL

| NM TO NEXT WPT | AV2NI | 3 | 2 | 1.3 | AV2NF | 4 | 3 | 2 | 1.7 | 1.1 | RW18 |
|--------------------|-------|------|------|------|-------|------|------|-----|-----|-----|------|
| ALT (3° APCH PATH) | 3000 | 2630 | 2310 | 2090 | 1670 | 1360 | 1040 | 720 | 620 | 430 | |



MISSED APPROACH:
 TRACK DCT TO AV2NH,
 THEN TRACK 176°.
 CLIMB TO 3000FT.

NOTES

| CATEGORY | A | B | C | D |
|-----------|----------------------|----------------------|----------------------|----------------------|
| LNAV/VNAV | | 430 (398-2.2) | | |
| LNAV | | 620 (585-3.3) | | |
| CIRCLING* | 660 (625-2.4) | | 760 (725-4.0) | 830 (795-5.0) |
| ALTERNATE | (1125-4.4) | | (1225-6.0) | (1295-7.0) |

- * 1. NO CIRCLING WEST OF RWY 18/36.
- 2. HOLDING NOT CONTAINED WITHIN CTA.

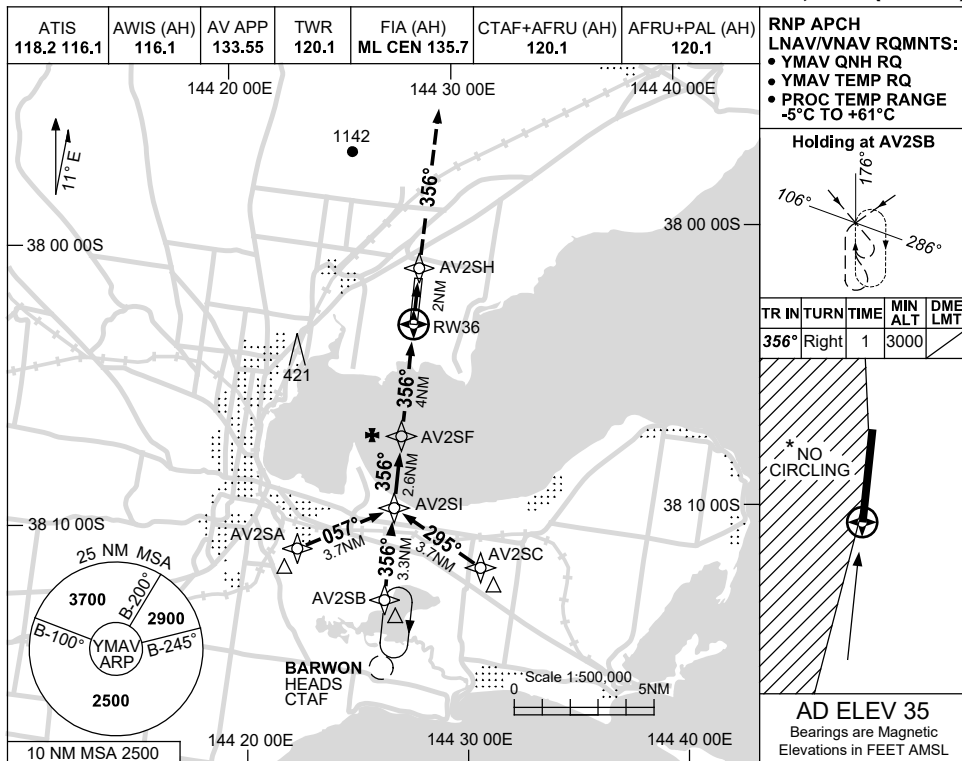
Changes: REVISED PROC, Editorial.

MAVGN01-177

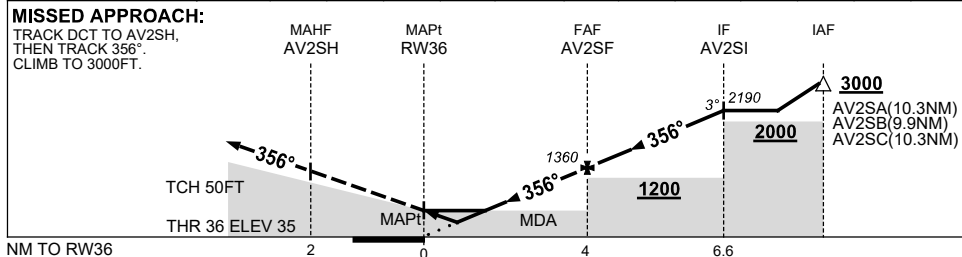
USE QNH

RNP Z RWY 36
AVALON, VIC (YMAV)

30 NOV 2023



| | | | | | | | | | | | | |
|--------------------|------|-----|-----|-----|------|-------|------|------|-------|--|--|--|
| NM TO NEXT WPT | RW36 | 0.9 | 1.5 | 2 | 3 | AV2SF | 1 | 2 | AV2SI | | | |
| ALT (3° APCH PATH) | | 370 | 550 | 720 | 1040 | 1360 | 1680 | 2000 | 2190 | | | |



NOTES

| CATEGORY | A | B | C | D |
|------------|----------------------|----------------------|----------------------|----------------------|
| LNAV/VNAV | | 370 (335-1.9) | | |
| LNAV | | 550 (515-2.9) | | |
| CIRCLING * | 660 (625-2.4) | | 760 (725-4.0) | 830 (795-5.0) |
| ALTERNATE | (1125-4.4) | | (1225-6.0) | (1295-7.0) |

1. MAX IAS:
INITIAL : 190KT.
- *2. NO CIRCLING WEST OF RWY 18/36.
3. HOLDING NOT CONTAINED WITHIN CTA.

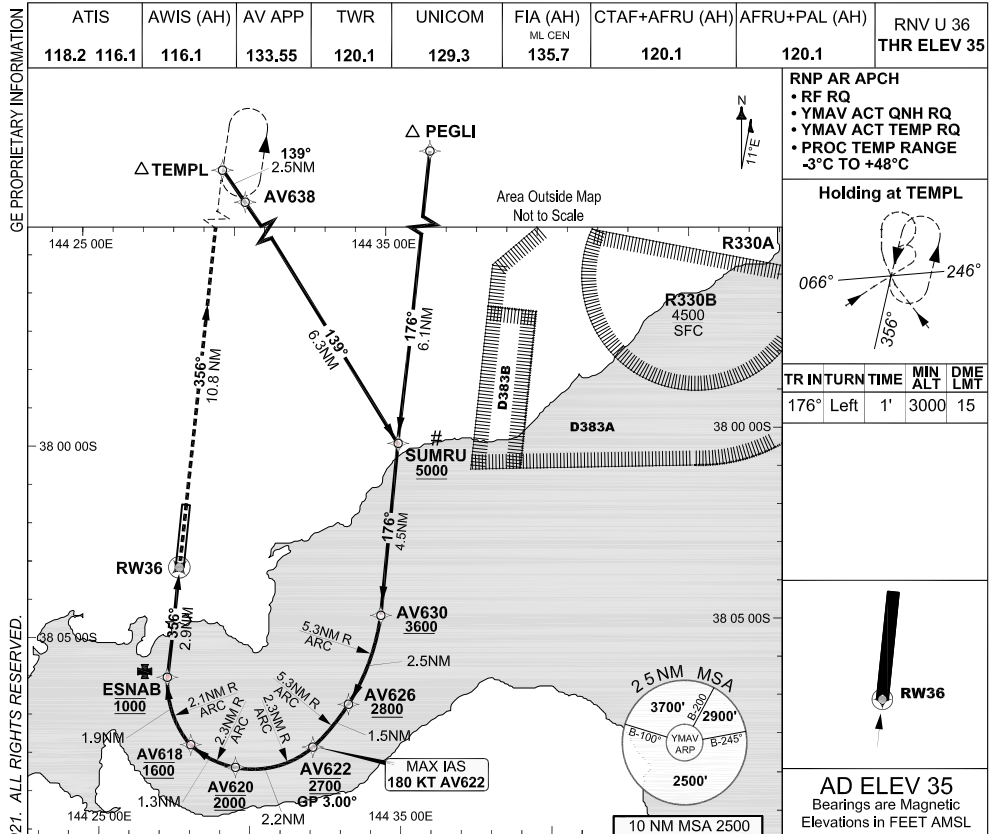
Changes: WPT NAMING CONVENTION, Editorial.

MAVGN02-177

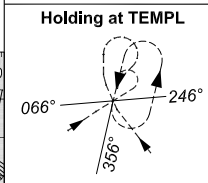
**FOR CASA APPROVED
OPERATORS ONLY
USE QNH**

RNP U RWY 36 (AR)
AVALON, VIC (YMAV)

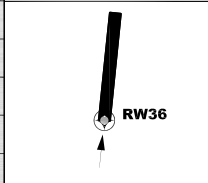
24 MAR 2022



RNP AR APCH
 • RF RQ
 • YMAV ACT QNH RQ
 • YMAV ACT TEMP RQ
 • PROC TEMP RANGE
 -3°C TO +48°C



| TR | TURN | TIME | MIN ALT | DME LMT |
|------|------|------|---------|---------|
| 176° | Left | 1' | 3000 | 15 |



AD ELEV 35
 Bearings are Magnetic
 Elevations in FEET AMSL

COPYRIGHT © MAVERUS, INC., 2021. ALL RIGHTS RESERVED. GE PROPRIETARY INFORMATION

NM FM THR 16.7 12.2 9.7 8.2 6.0 4.8 2.9 0 10.8

NOTES

1. PAPI not coincident with VPA.
2. RNP 0.3 Required from AV638 to ESNAB.
3. RNP 0.3 Required from PEGLI to ESNAB.
4. Climb gradient of 4.5% to 3000FT required to reach TEMPL.
5. HLDG pattern not contained within CTA.
6. Latest Intercept Point (LIP)

| CATEGORY | A | B | C | D |
|------------|-----|---|-----------------------|-----------------------|
| RNP (0.30) | | | DA(H) 428 (393 - 2.2) | DA(H) 428 (393 - 2.2) |
| RNP (0.15) | | | DA(H) 362 (327 - 1.8) | DA(H) 362 (327 - 1.8) |
| CIRCLING | N/A | | NOT AUTHORISED | NOT AUTHORISED |
| ALTERNATE | | | | |

Changes: BRIEFING STRIP

MAVGN03-170

DO NOT USE FOR NAVIGATION

Prepared by GE Aviation - ICAO Doc 9905 Compliant

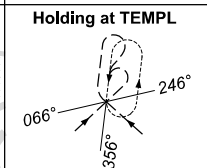
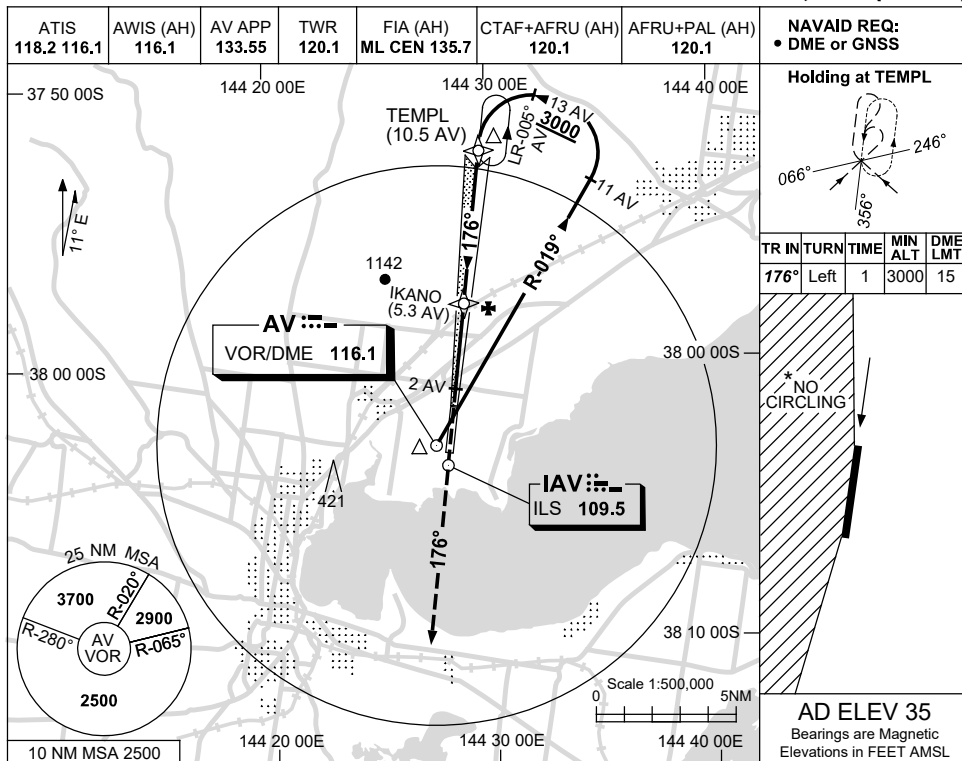
© Airservices Australia



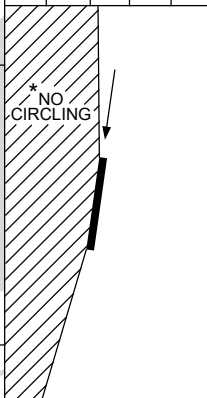
USE QNH

ILS-Y or LOC-Y RWY 18
AVALON, VIC (YMAV)

24 MAR 2022

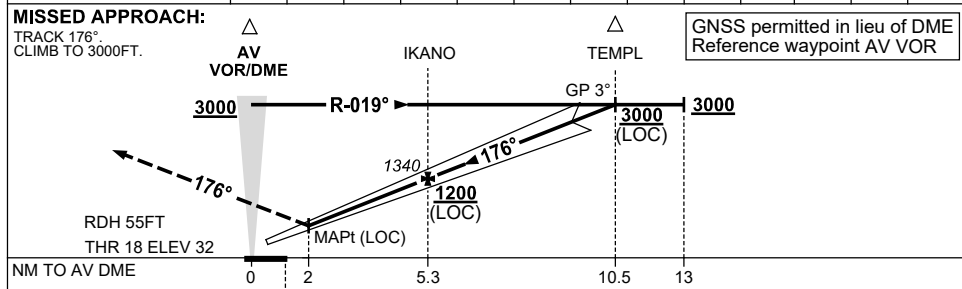


| TR | IN | TURN | TIME | MIN | DME |
|------|------|------|------|-----|-----|
| | | | | ALT | LMT |
| 176° | Left | 1 | 3000 | | 15 |



AD ELEV 35
 Bearings are Magnetic
 Elevations in FEET AMSL

| NM TO AV DME | 3.1 | 4 | 5.3 | 6 | 7 | 8 | 8.9 | 9 | 10 | 10.5 | | | |
|--------------------|-----|-----|------|------|------|------|------|------|------|------|--|--|--|
| ALT (3° APCH PATH) | 620 | 920 | 1340 | 1560 | 1880 | 2200 | 2500 | 2520 | 2840 | 3000 | | | |



| NM TO AV DME | 0 | 2 | 5.3 | 10.5 | 13 |
|--------------|---|-----|-----|------|----|
| NM TO THR 18 | 0 | 0.6 | 3.9 | 9.1 | |

| CATEGORY | A | B | C | D |
|------------|---------------|---------------|-------------------------------|---------------|
| S-I ILS | | 390 (358) | 2.0 (VIS 1.5 WITH ACTUAL QNH) | |
| S-I LOC | | 620 (585-3.3) | | |
| CIRCLING * | 660 (625-2.4) | | 760 (725-4.0) | 830 (795-5.0) |
| ALTERNATE | (1125-4.4) | | (1225-6.0) | (1295-7.0) |

- NOTES**
- NO CIRCLING WEST OF RWY 18/36.
 - HLDG PATTERN NOT CONTAINED WITHIN CTA.

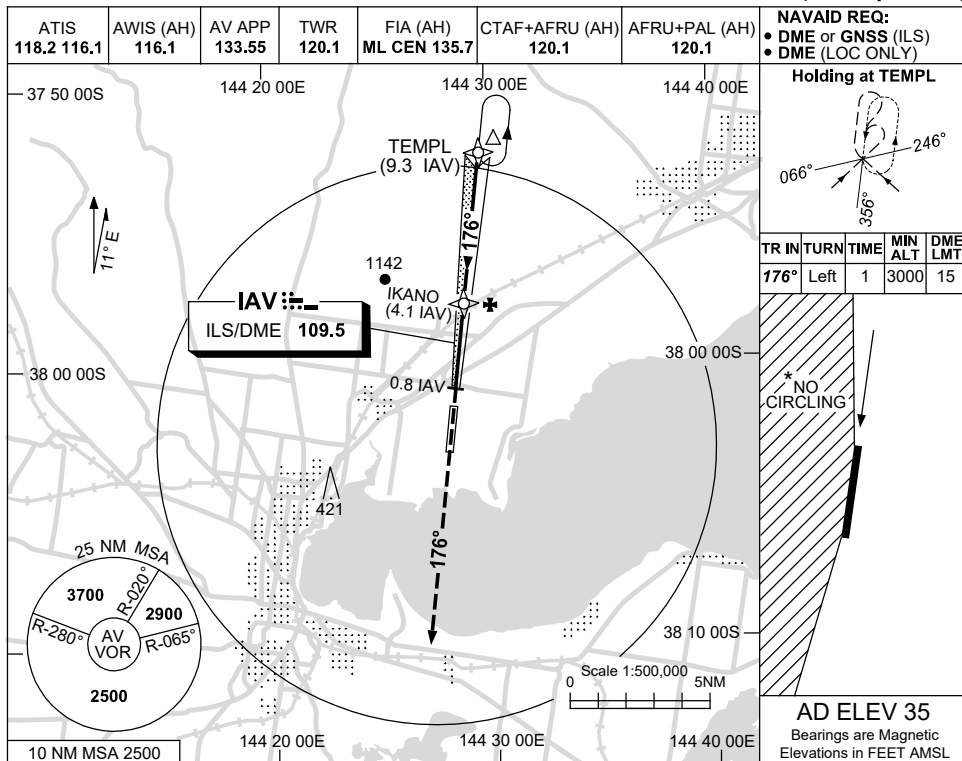
Changes: AWIS FREQ.

MAV/101-170

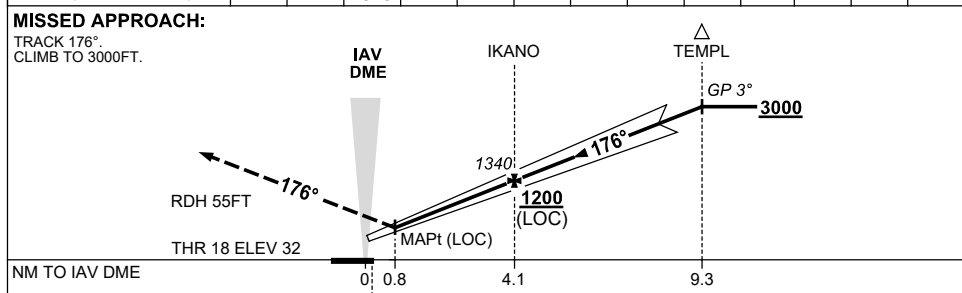
USE QNH

ILS-Z or LOC-Z RWY 18
AVALON, VIC (YMAV)

24 MAR 2022



| | | | | | | | | | | | | | |
|--------------------|-----|-----|------|------|------|------|------|------|------|--|--|--|--|
| NM TO IAV DME | 1.9 | 3 | 4.1 | 5 | 6 | 7 | 8 | 9 | 9.3 | | | | |
| ALT (3° APCH PATH) | 620 | 980 | 1340 | 1620 | 1940 | 2250 | 2570 | 2890 | 3000 | | | | |



- NOTES**
- NO CIRCLING WEST OF RWY 18/36.
 - HLDG PATTERN NOT CONTAINED WITHIN CTA.

| CATEGORY | A | B | C | D |
|------------|---------------|---|---------------|---------------|
| S-I ILS | | 390 (358) 2.0 (VIS 1.5 WITH ACTUAL QNH) | | |
| S-I LOC | | 620 (585-3.3) | | |
| CIRCLING * | 660 (625-2.4) | | 760 (725-4.0) | 830 (795-5.0) |
| ALTERNATE | (1125-4.4) | | (1225-6.0) | (1295-7.0) |

Changes: AWIS FREQ.

MAVII02-170

NOISE ABATEMENT PROCEDURES AVALON

1. PREFERRED FLIGHT PATHS

- 1.1 Whenever possible, aircraft are to avoid the noise sensitive areas of Lara, Little River and Geelong Grammar School (Geelong Grammar is R 233 AV, 3NM, or 229 deg Mag 3.5NM from Avalon ARP).
- 1.2 Whenever possible, circuit training after 1100 UTC is to be conducted to the east of the airport.
- 1.3 If low level circuits are conducted to the west of the airport the downwind leg shall not be further than 4KM from the runway.

2. PREFERRED FLIGHT PATHS

- 2.1 Between the hours 1300 and 2000 UTC the preferred runways will be:

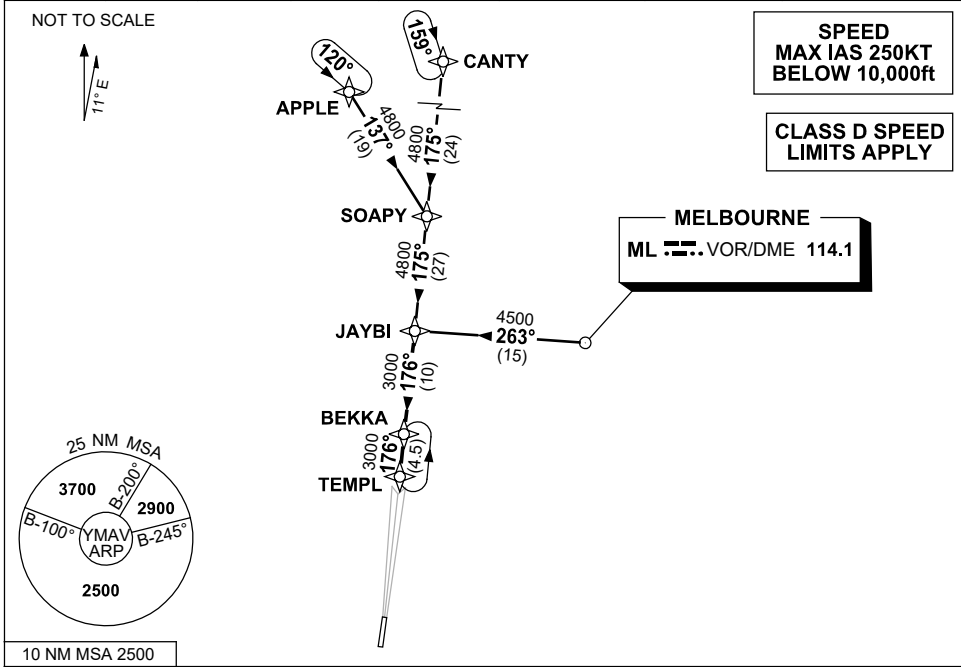
Landing - RWY 36

Take-off - RWY 18

**STANDARD INSTRUMENT ARRIVAL (STAR)
JAYBI FIVE ARRIVAL (RNAV)
AVALON, VIC (YMAV)**

24 MAR 2022

| | | | | | | | |
|---------------------|--------------------|------------------|--------------|--------------------------|-------------------------|------------------------|--|
| ATIS 118.2 116.1 | AWIS (AH) 116.1 | AV APP 133.55 | TWR 120.1 | FIA (AH) ML CEN 135.7 | CTAF+AFRU (AH) 120.1 | AFRU+PAL (AH) 120.1 | Bearings are Magnetic Elevations in FEET AMSL |
|---------------------|--------------------|------------------|--------------|--------------------------|-------------------------|------------------------|--|



TRANSITION:

CANTY: From CANTY to JAYBI:
Track 175° to SOAPY
Track 175° to JAYBI
Then follow ARRIVAL instruction

MELBOURNE: From ML VOR to JAYBI:
(ML VOR) Track 263° to JAYBI
Then follow ARRIVAL instruction

APPLE: From APPLE to JAYBI:
Track 137° to SOAPY
Track 175° to JAYBI
Then follow ARRIVAL instruction

ARRIVAL: JAYBI FIVE (RNAV):

RWY 18: From JAYBI:
• Track 176° to BEKKA
• Track 176° to TEMPL
• Intercept RWY 18 LOC

RWY 36: From JAYBI:
• Track 176° to BEKKA
• Track 176° to TEMPL
From TEMPL expect tracking instructions or radar vectors for final

COMMUNICATIONS FAILURE: PROCEDURE IN IMC

- Squawk 7600, comply with vertical navigation requirements, but not below MSA.
- Track via the latest STAR clearance to the nominated runway, then fly the most suitable approach in accordance with ERS A EMERG Section 1.5.

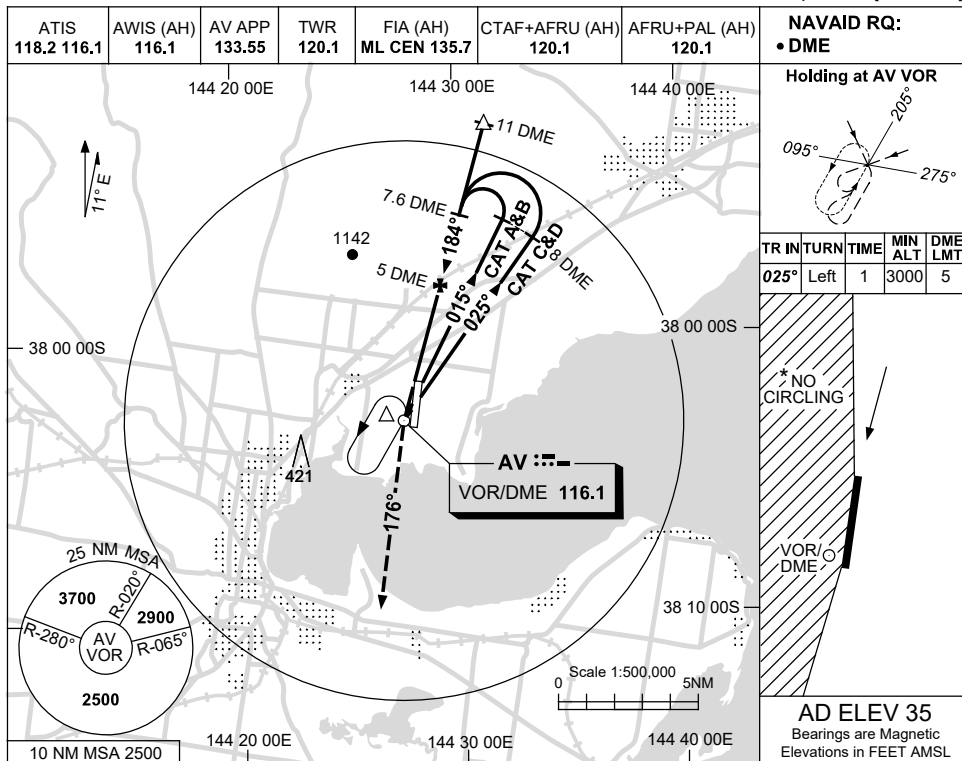
Changes: AWIS FREQ.

MAVSR01-170

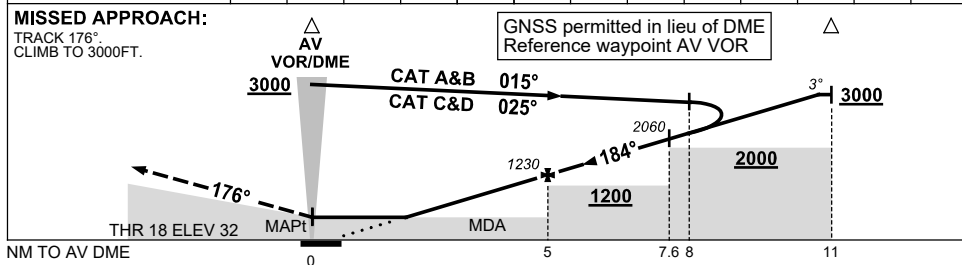
USE QNH

VOR RWY 18
AVALON, VIC (YMAV)

24 MAR 2022



| | | | | | | | | | | | | |
|--------------------|-----|-----|------|------|------|------|------|------|------|------|--|--|
| DIST TO AV DME | 3 | 4 | 5 | 6 | 7 | 7.6 | 8 | 9 | 10 | 10.6 | | |
| ALT (3° APCH PATH) | 620 | 910 | 1230 | 1550 | 1870 | 2060 | 2190 | 2500 | 2820 | 3000 | | |



NOTES

| CATEGORY | A | B | C | D |
|-------------|----------------------|---|----------------------|---|
| S-I VOR/DME | 620 (585-3.3) | | | |
| CIRCLING * | 660 (625-2.4) | | 830 (795-5.0) | |
| ALTERNATE | (1125-4.4) | | (1295-7.0) | |

1. MAX IAS:
INITIAL : 200KT.
- * 2. NO CIRCLING WEST OF RWY 18/36.
3. HLDG PATTERN NOT CONTAINED WITHIN CTA.

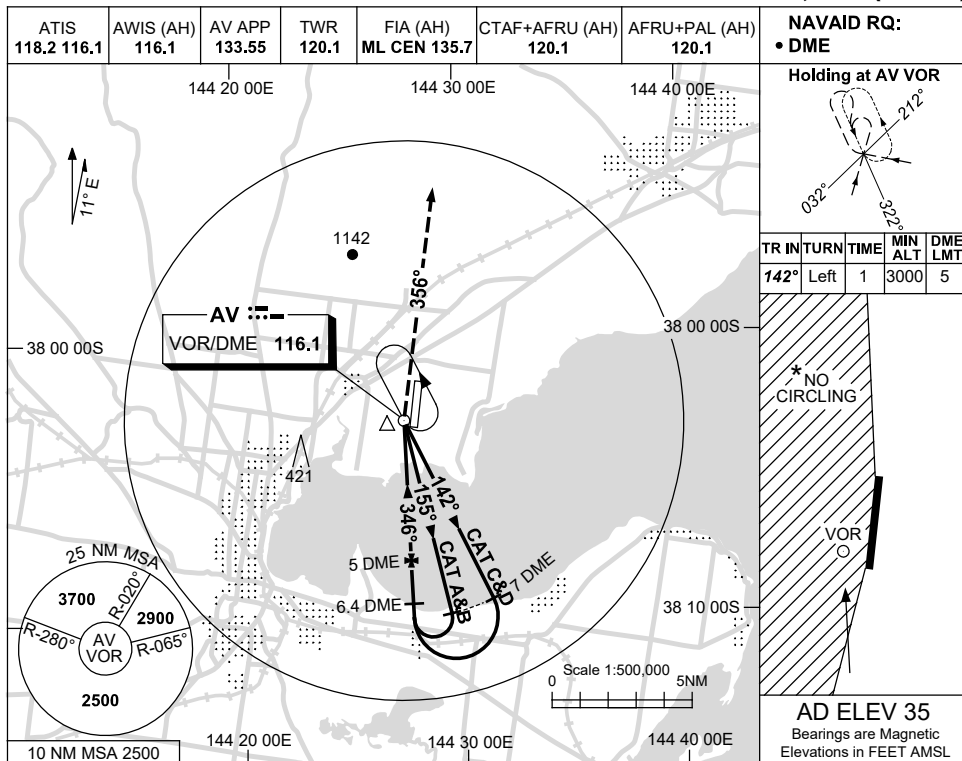
Changes: AWIS FREQ.

MAVVO01-170

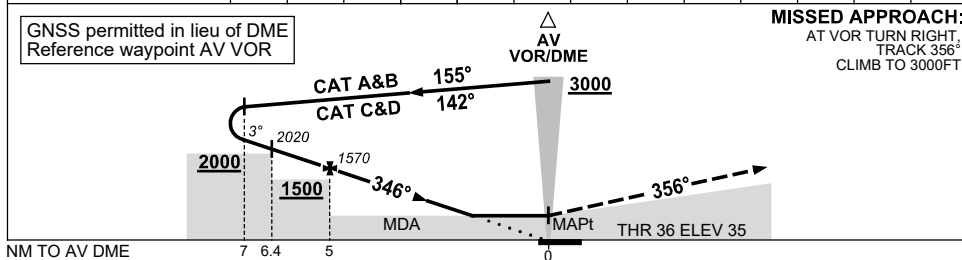
USE QNH

VOR RWY 36
AVALON, VIC (YMAV)

24 MAR 2022



| | | | | | | | | | | | | |
|--------------------|------|------|------|------|------|-----|-----|-----|--|--|--|--|
| DIST TO AV DME | 7 | 6.4 | 6 | 5 | 4 | 3 | 2 | 1.8 | | | | |
| ALT (3° APCH PATH) | 2210 | 2020 | 1890 | 1570 | 1250 | 930 | 610 | 570 | | | | |



| CATEGORY | A | B | C | D |
|-------------|---------------|---------------|---------------|---|
| S-I VOR/DME | 570 (535-3.0) | | | |
| CIRCLING * | 660 (625-2.4) | 760 (725-4.0) | 830 (795-5.0) | |
| ALTERNATE | (1125-4.4) | (1225-6.0) | (1295-7.0) | |

- NOTES**
- MAX IAS: INITIAL : 200KT.
 - NO CIRCLING WEST OF RWY 18/36.
 - HLDG PATTERN NOT CONTAINED WITHIN CTA.

Changes: AWIS FREQ.

MAVVO03-170