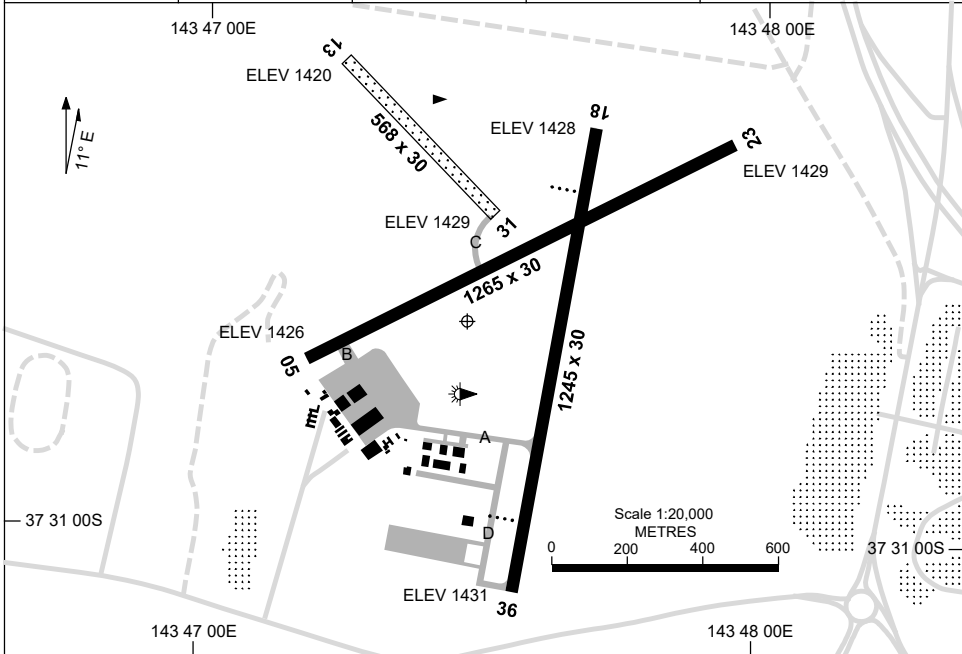


30 NOV 2023

AD ELEV 1433  
37 30 42S 143 47 28E

AERODROME CHART  
**BALLARAT, VIC (YBLT)**

|                |                     |                     |                    |  |
|----------------|---------------------|---------------------|--------------------|--|
| AWIS<br>134.05 | FIA<br>ML CEN 126.8 | CTAF+AFRU<br>127.75 | AFRU+PAL<br>127.75 | Bearings are Magnetic<br>Elevations in FEET AMSL |
|----------------|---------------------|---------------------|--------------------|--|



|                          |  | <b>AERODROME LIGHTING</b>  |  |
|--------------------------|--|--|--|
| <b>RWY</b>               |  | TAXIWAY: BLUE EDGE<br>RL : AFRU+PAL 127.75 , MAN , PTBL (BY ARRANGEMENT) |  |
| <b>18</b> <sup>178</sup> |  | PAPI RIGHT SIDE 3.0° 29.5FT LIRL   |  |
| <sup>358</sup> <b>36</b> |  | PAPI LEFT SIDE 3.0° 29.5FT LIRL  |  |
| <b>05</b> <sup>051</sup> |  | NIL  |  |
| <sup>231</sup> <b>23</b> |  | NIL  |  |
| <b>13</b> <sup>124</sup> |  | NIL  |  |
| <sup>304</sup> <b>31</b> |  | NIL  |  |

**NOTES**

1. RWY 18/36 LIGHTING ACTIVATED HN.
2. AWIS RQ 1 SEC TRANSMIT PULSE TO ACTIVATE.
3. FIA FREQ 126.8 AVBL 2,000FT.

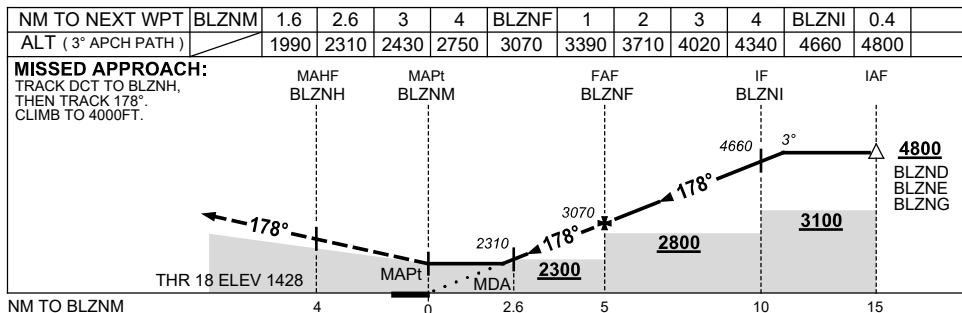
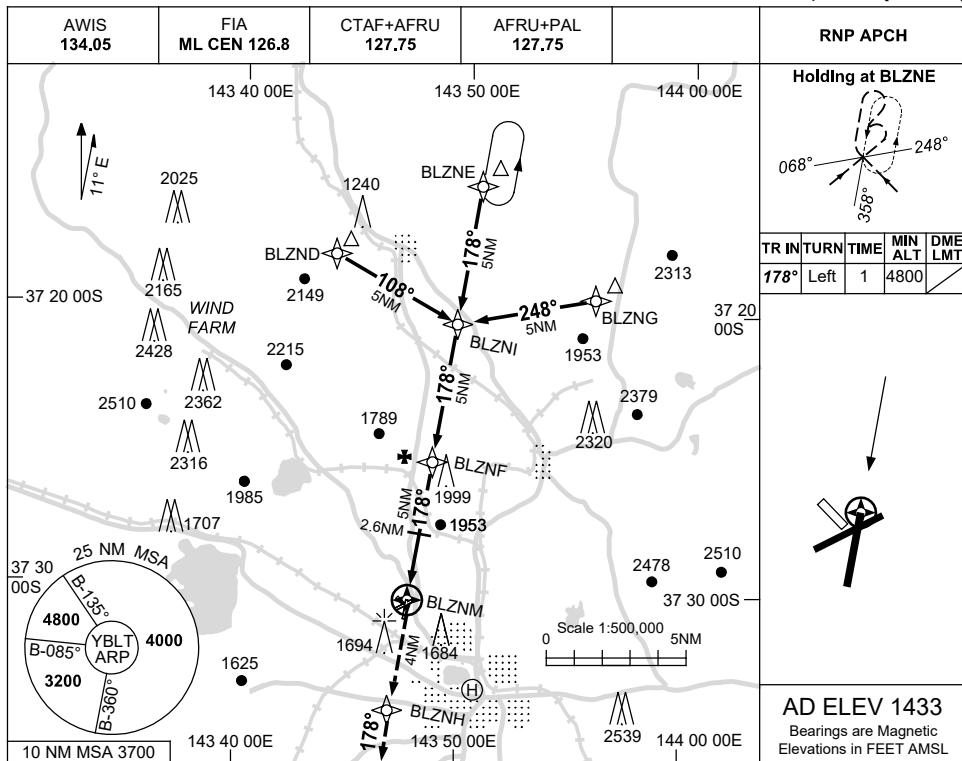
Changes: THR ELEV, Editorial.

BLTAD01-177

USE QNH

RNP RWY 18  
BALLARAT, VIC (YBLT)

30 NOV 2023



| CATEGORY  | A              | B | C              | D |
|-----------|----------------|---|----------------|---|
| LNAV      | 1990 (557-3.1) |   | NOT APPLICABLE |   |
| CIRCLING  | 2300 (867-2.4) |   |                |   |
| ALTERNATE | (1367-4.4)     |   |                |   |

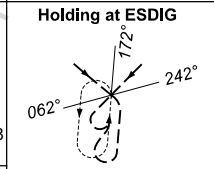
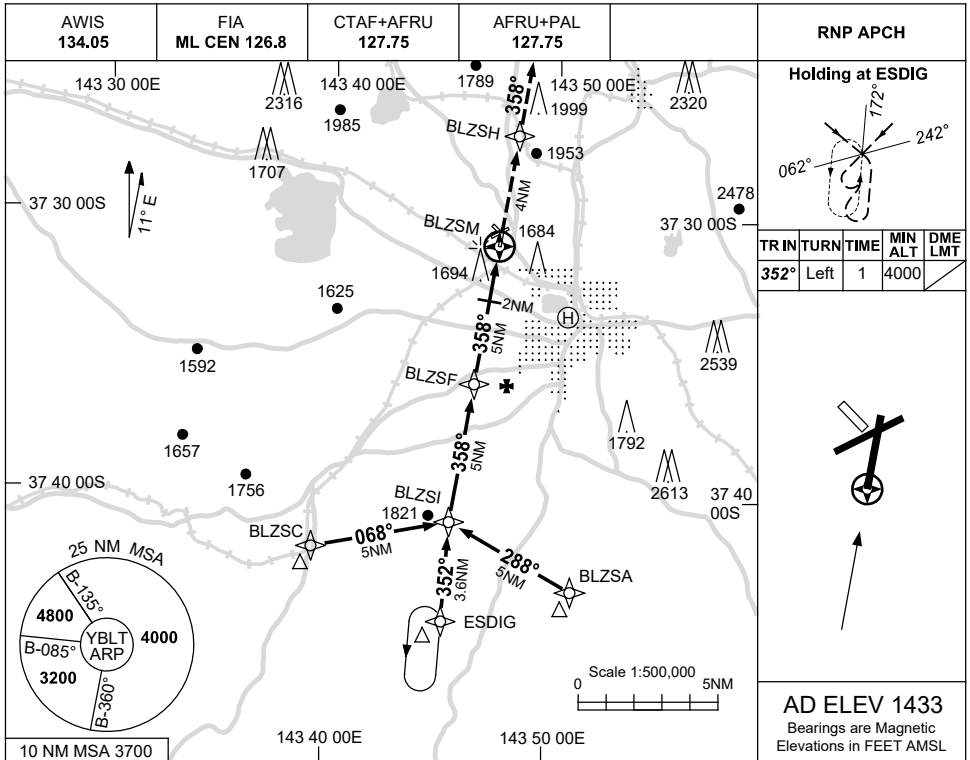
Changes: THR ELEV, NEW LOGO, Editorial.

BLTGN01-177

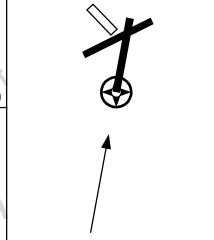
USE QNH

RNP RWY 36  
BALLARAT, VIC (YBLT)

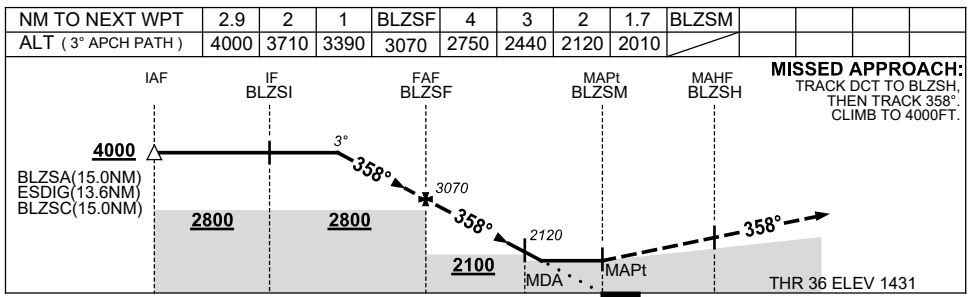
30 NOV 2023



| TR   | IN   | TURN | TIME | MIN ALT | DME LMT |
|------|------|------|------|---------|---------|
| 352° | Left | 1    |      | 4000    |         |



**AD ELEV 1433**  
Bearings are Magnetic  
Elevations in FEET AMSL



**NOTES**

| CATEGORY  | A              | B | C              | D |
|-----------|----------------|---|----------------|---|
| LNAV      | 2010 (557-3.2) |   |                |   |
| CIRCLING  | 2300 (867-2.4) |   |                |   |
| ALTERNATE | (1367-4.4)     |   |                |   |
|           |                |   | NOT APPLICABLE |   |

Changes: MIN SEGMENT ALT, NEW LOGO, Editorial.

BLTGN02-177