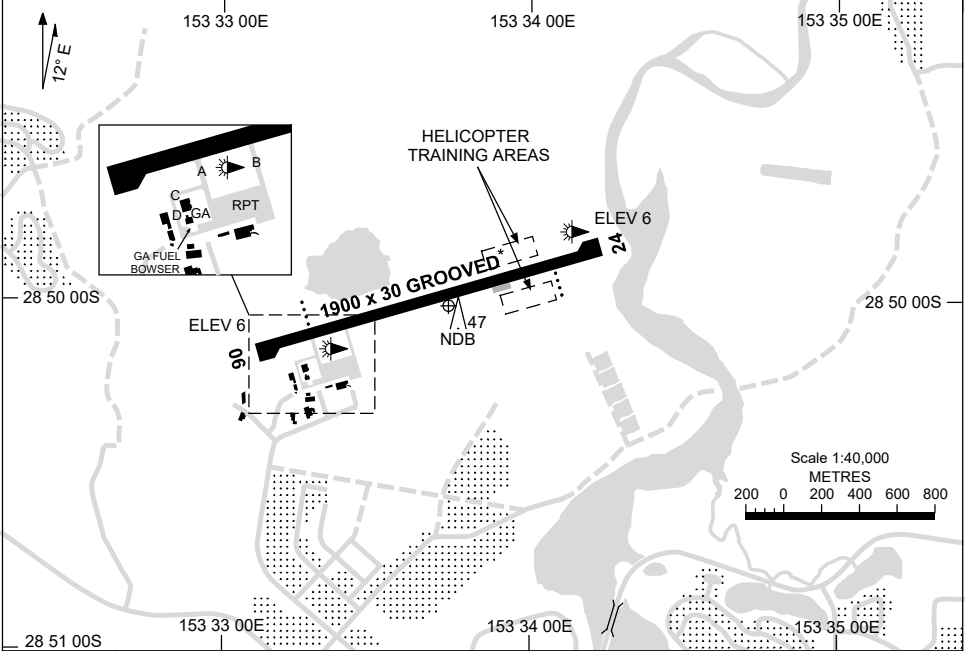


5 SEP 2024

AD ELEV 7  
28 50 02S 153 33 45E

**AERODROME CHART**  
**BALLINA/BYRON GATEWAY, NSW (YBNA)**

AWIS 134.8	FIA BN CEN 120.3	SFIS 124.2	CTAF+AFRU 124.2	PAL+AA 121.3		Bearings are Magnetic Elevations in FEET AMSL
---------------	---------------------	---------------	--------------------	-----------------	--	--



RWY		AERODROME LIGHTING	
		TAXIWAY : BLUE EDGE, RGL	
		RL : PAL+AA 121.3 , SDBY (15 SEC)	
<b>06</b> <sup>062</sup>		PAPI 3.0° 53FT MIRL RTIL	
<sup>242</sup> <b>24</b>		PAPI 3.0° 53FT MIRL RTIL	

**NOTES**

1. BN CEN FIA 120.3 AVBL IN CIRCUIT AREA. FOR ON GROUND COM USE BN CEN 126.05
2. PAL OPERATES PAPI AND RTIL HJ. PAL OPERATES PAPI, RTIL AND MIRL DURING ADVERSE WEATHER CONDITIONS HJ.
- \*3. RWY GROOVED - 30M WIDE.

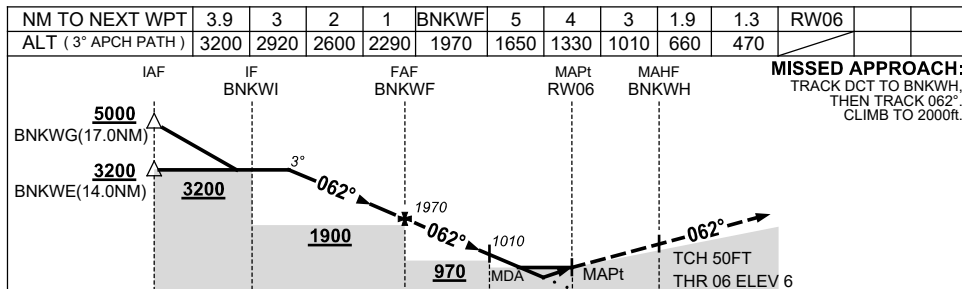
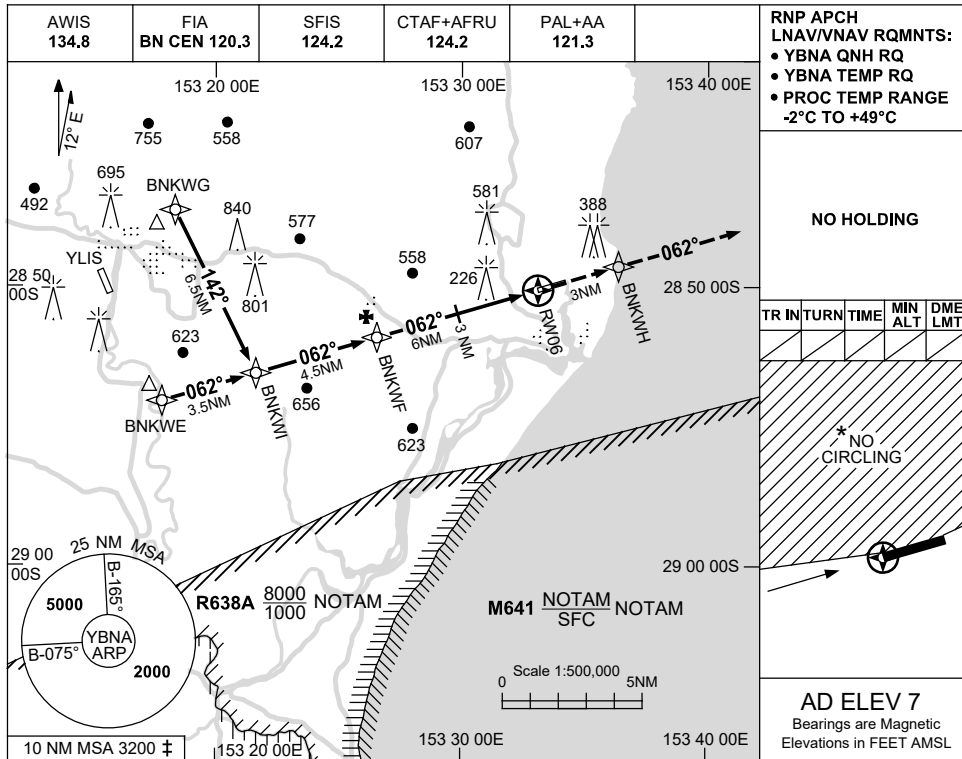
Changes: PAPI REPLACES AT VASIS, MIRL, Editorial.

BNAAD01-180

**USE QNH**  
**BALLINA/BYRON GATEWAY, NSW (YBNA)**

RNP Z RWY 06

28 NOV 2024



**NOTES**

- MAX IAS:  
INITIAL : 210KT.
- 10 NM MSA IS A COMBINED AREA FOR YBNA, YLIS.
- NO CIRCLING NORTH OF RWY 06 / 24.
- CAUTION:**  
PROC OVERLAYS YLIS PROCS.

CATEGORY	A	B	C	D
LNAV/VNAV		470 (464-2.6)		NOT APPLICABLE
LNAV		660 (653-3.7)		
CIRCLING *	790 (783-2.4)		1030 (1023-4.0)	
ALTERNATE		(1283-4.4)	(1523-6.0)	

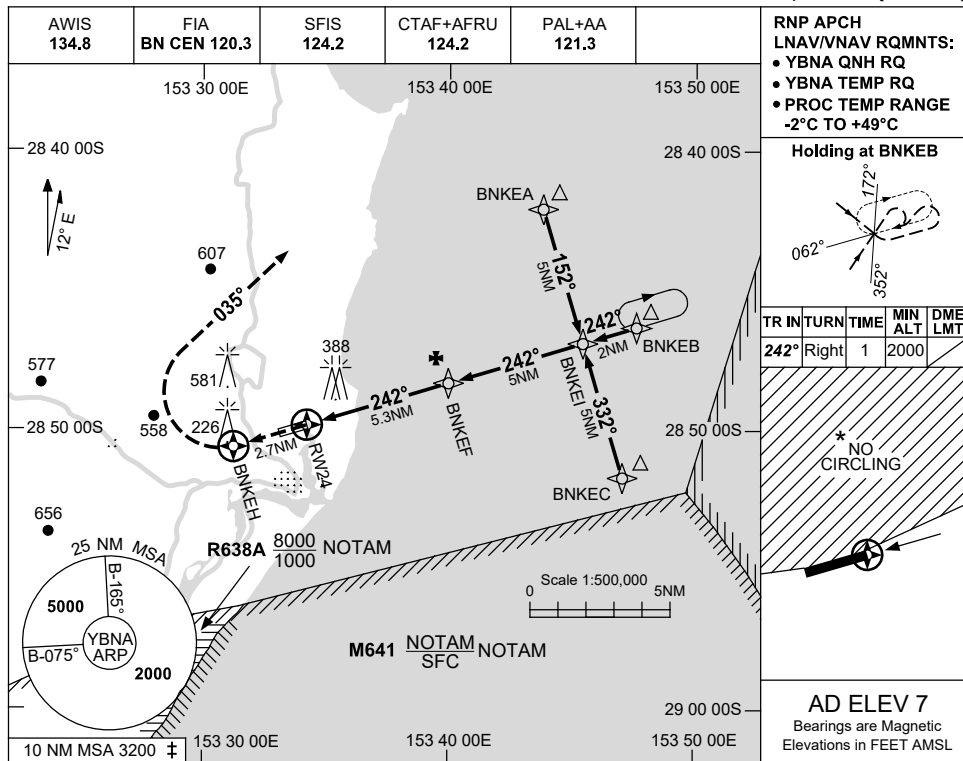
Changes: M641, Editorial.

BNAGN01-181

**USE QNH**  
**BALLINA/BYRON GATEWAY, NSW (YBNA)**

RNP Z RWY 24

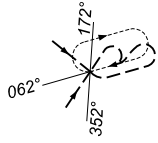
28 NOV 2024



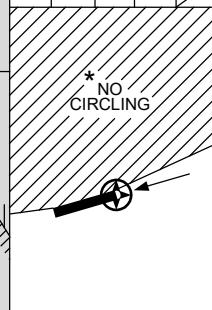
**RNP APCH**  
**LNAV/VNAV RQMNTS:**

- YBNA QNH RQ
- YBNA TEMP RQ
- PROC TEMP RANGE -2°C TO +49°C

**Holding at BNKEB**



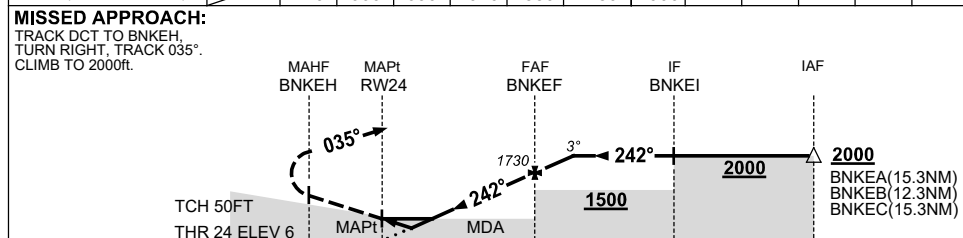
TR	INTURN	TIME	MIN ALT	DME LMT
242°	Right	1	2000	



**AD ELEV 7**

Bearings are Magnetic  
Elevations in FEET AMSL

NM TO NEXT WPT	RW24	1.3	1.9	2	3	4	BNKEF	0.8			
ALT (3° APCH PATH)		470	660	690	1010	1330	1730	2000			



**NOTES**

CATEGORY	A	B	C	D
LNAV/VNAV		<b>470</b> (464-2.6)		<b>NOT APPLICABLE</b>
LNAV		<b>660</b> (653-3.7)		
CIRCLING *	<b>790</b> (783-2.4)		<b>1030</b> (1023-4.0)	
ALTERNATE	(1283-4.4)		(1523-6.0)	

1. MAX IAS:  
HOLDING : 210KT.  
INITIAL : 210KT.
- \* 2. NO CIRCLING NORTH OF RWY 06 / 24.
- ‡ 3. 10 NM MSA IS A COMBINED AREA FOR YBNA, YLIS.

Changes: M641 REPLACES R638D, Editorial.

BNAGN02-181

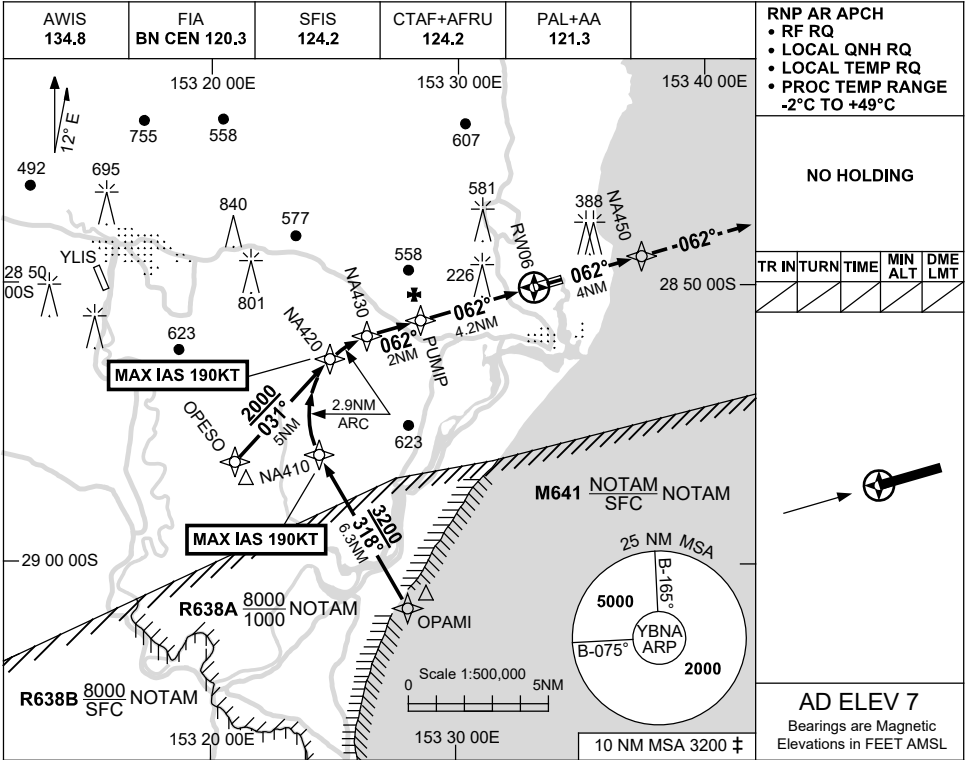
FOR CASA APPROVED OPERATORS ONLY

USE QNH

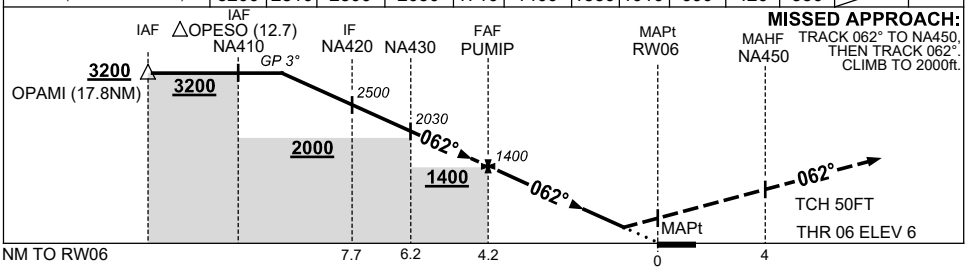
RNP X RWY 06 (AR)

**BALLINA/BYRON GATEWAY, NSW (YBNA)**

28 NOV 2024



NM TO NEXT WPT	2.2	1	NA420	NA430	1	PUMIP	4	3	2	1.1	0.9	RWY06
ALT (3° APCH PATH)	3200	2810	2500	2030	1710	1400	1330	1010	690	420	350	



1. MAX IAS:  
RF TURN : 190KT.
- ‡ 2. 10 NM MSA IS A COMBINED AREA FOR YBNA, YLIS.
3. **CAUTION:**  
INITIAL SEGMENTS OVERLAY YLIS RNP RWY 33 PROC.

CATEGORY	A	B	C	D
RNP (0.3)		420 (414-2.3)		NOT AUTHORISED
RNP (0.1)		350 (344-1.9)		
CIRCLING	NOT AUTHORISED			
ALTERNATE	(1203-4.4)		(1423-6.0)	

Changes: M641 REPLACES R638D.

BNAGN03-181

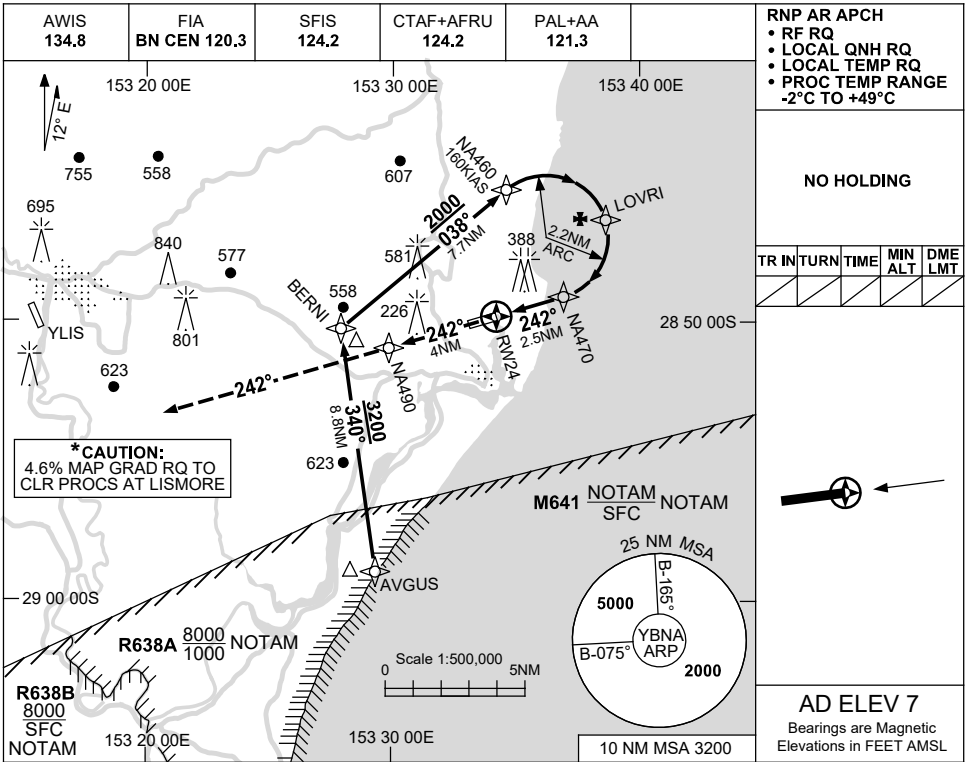
FOR CASA APPROVED OPERATORS ONLY

USE QNH

RNP X RWY 24 (AR)

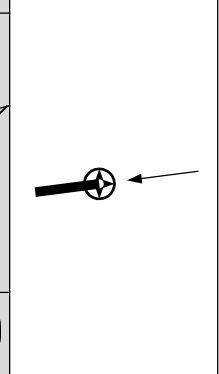
BALLINA/BYRON GATEWAY, NSW (YBNA)

28 NOV 2024



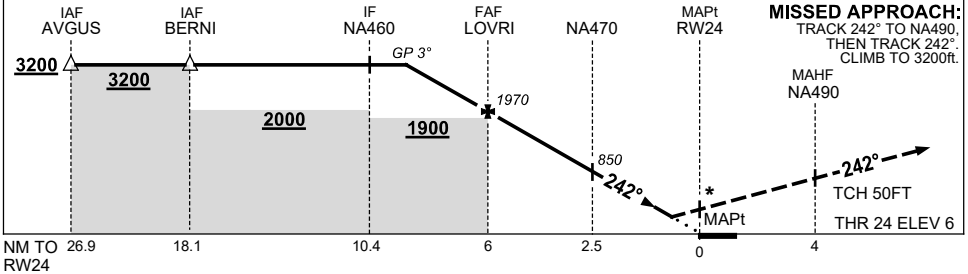
NO HOLDING

TR	IN	TURN	TIME	MIN	ALT	DME	LMT



**AD ELEV 7**  
Bearings are Magnetic  
Elevations in FEET AMSL

NM TO NEXT WPT	3.9	3	2	1	LOVRI	3	2	1	NA470	2	1.3	1.1		
ALT (3° APCH PATH)	3200	2920	2600	2290	1970	1810	1490	1170	850	690	480	420		



**NOTES**

CATEGORY	A	B	C	D
RNP (0.3)		480 (474-2.7)		NOT AUTHORISED
RNP (0.1)		420 (414-2.3)		
CIRCLING	NOT AUTHORISED			
ALTERNATE	(1203-4.4)		(1423-6.0)	

1. MAX IAS:  
RF TURN : 160KT.
- ±2. 10 NM MSA IS A  
COMBINED AREA  
FOR YBNA, YLIS.

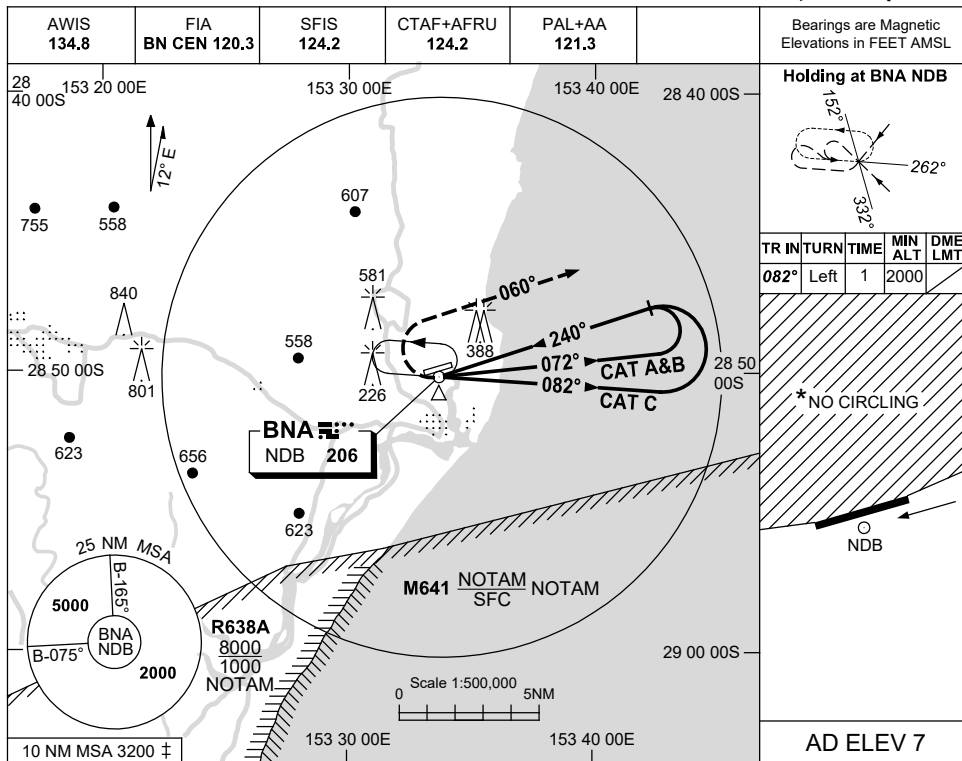
Changes: M641 REPLACES R638D.

BNAGN04-181

**USE QNH**  
**BALLINA/BYRON GATEWAY, NSW (YBNA)**

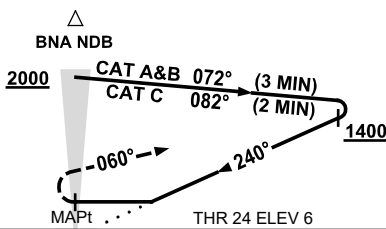
NDB RWY 24

28 NOV 2024



DME DIST	NOT APPLICABLE				
ALT					

**MISSED APPROACH:**  
TURN RIGHT,  
TRACK 060°.  
CLIMB TO 2000ft.



**NOTES**

1. MAX IAS:  
HOLDING : 230KT.  
INITIAL : 210KT.  
MISSED APCH  
TURN : 180KT.
- \* 2. NO CIRCLING NORTH OF RWY 06 / 24.
- ‡ 3. 10 NM MSA IS A COMBINED AREA FOR YBNA, YLIS.

CATEGORY	A	B	C	D
S-I NDB	790 (783-4.5)			NOT APPLICABLE
CIRCLING *	790 (783-2.4)	1030 (1023-4.0)		
ALTERNATE	(1283-4.4)	(1523-6.0)		

Changes: M641 REPLACES R638D, Editorial.

BNANB01-181