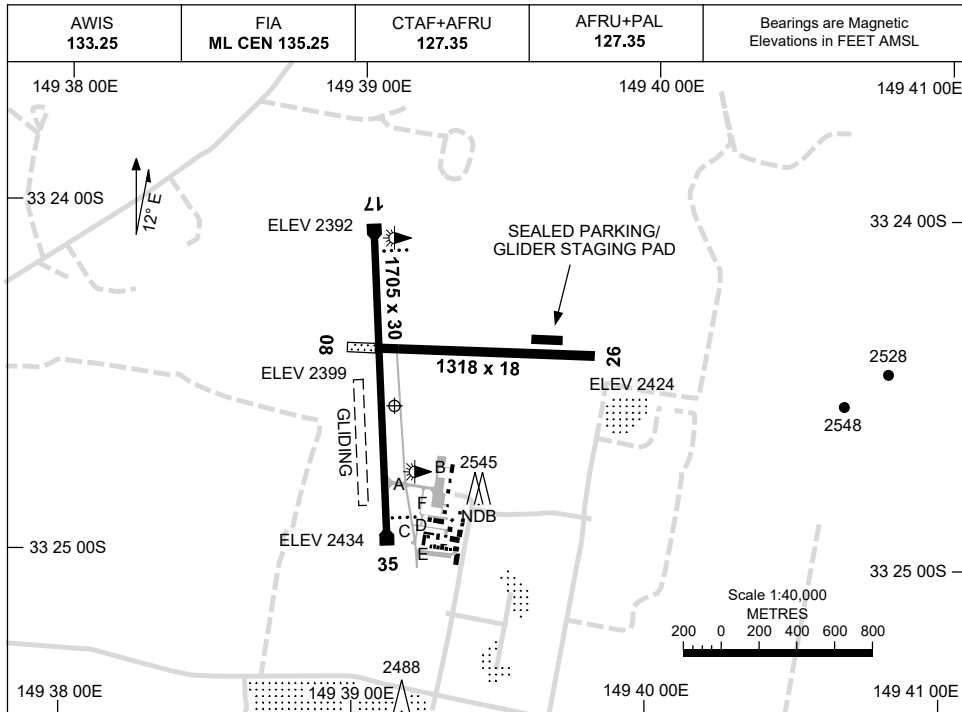


30 NOV 2023

AD ELEV 2435  
33 24 34S 149 39 07E

**AERODROME CHART**  
**BATHURST, NSW (YBTH)**



<b>AERODROME LIGHTING</b>	
<b>RWY</b>	TAXIWAY : GREEN CENTRELINE RL : AFRU+PAL 127.35 , SDBY (1 MINUTE)
<b>17</b> <sup>164</sup>	PAPI 3.0° 41.5FT LIRL
<sup>344</sup> <b>35</b>	PAPI RIGHT SIDE 3.0° 41.5FT LIRL
<b>08</b> <sup>079</sup>	NIL
<sup>259</sup> <b>26</b>	NIL

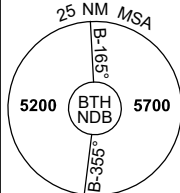
**NOTES**

Changes: WDI REMOVED.

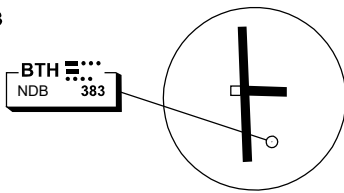
BTHAD01-177

**8 SEP 2022**

AWIS 133.25	FIA ML CEN 135.25	CTAF+AFRU 127.35	AFRU+PAL 127.35	Bearings are Magnetic Elevations in FEET AMSL
----------------	----------------------	---------------------	--------------------	--



**REFERENCE WAYPOINT BTH NDB**



10 NM MSA 5400

AD ELEV 2435

<b>KADOM TO BTH</b> 											<b>MISSED APPROACH:</b> TRACK 287°. CLIMB TO 5200FT.									
	NM TO BTH NDB		25	15				6	5	4	0									
<b>CIRCLING MINIMA</b>			A,B: 3810-2.4			C: 3810-4.0			D: N/A											
NM TO BTH NDB		6	5	4	3	2	1	0.1												
ALT (3° APCH PATH)		5700	5380	5060	4740	4430	4110	3810												

<b>CWR TO BTH</b> 											<b>MISSED APPROACH:</b> TURN LEFT, TRACK 340°. CLIMB TO 5700FT.									
	NM TO BTH NDB		25	15		10			5		0									
<b>CIRCLING MINIMA</b>			A,B: 3810-2.4			C: 3810-4.0			D: N/A											
NM TO BTH NDB		7	6	5	4	3	2.7													
ALT (3° APCH PATH)		5200	4870	4550	4230	3920	3810													

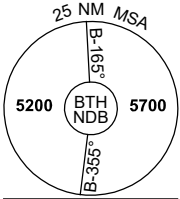
<b>VIRUR TO BTH</b> 											<b>MISSED APPROACH:</b> TURN RIGHT, TRACK 185°. CLIMB TO 5700FT.									
	NM TO BTH NDB		25	15					5		0									
<b>CIRCLING MINIMA</b>			A,B: 3810-2.4			C: 3810-4.0			D: N/A											
NM TO BTH NDB		5	4	3	2	1	0.6													
ALT (3° APCH PATH)		5200	4880	4560	4240	3930	3810													

Changes: RWY 08/26.

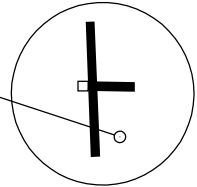
BTHDG01-172

**8 SEP 2022**

AWIS 133.25	FIA ML CEN 135.25	CTAF+AFRU 127.35	AFRU+PAL 127.35		Bearings are Magnetic Elevations in FEET AMSL
----------------	----------------------	---------------------	--------------------	--	--

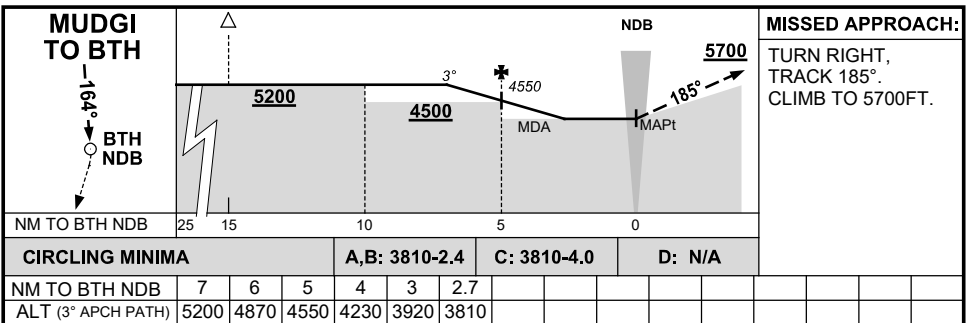
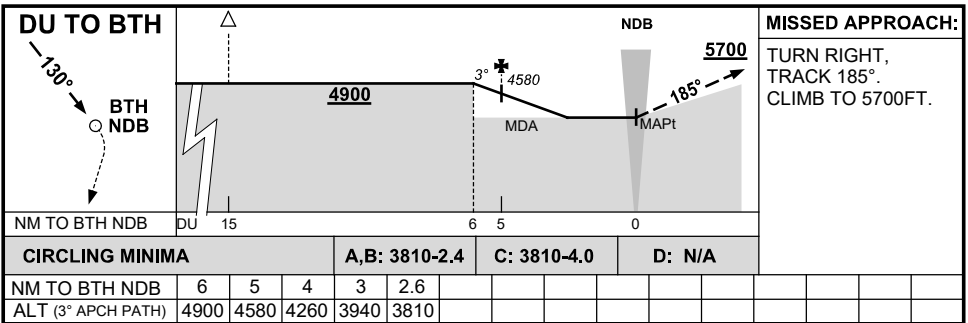
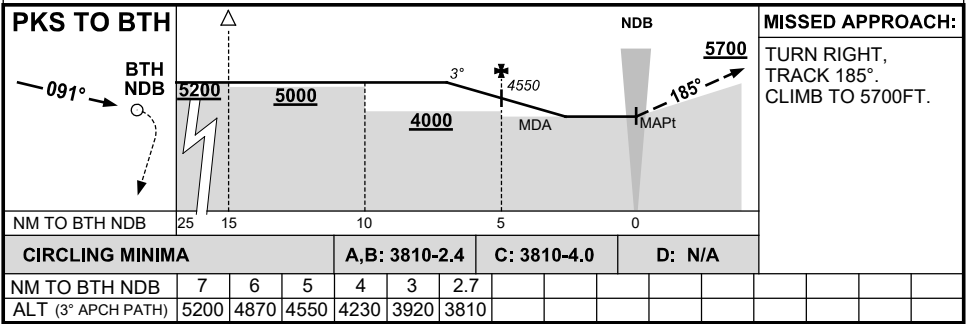


**REFERENCE WAYPOINT BTH NDB**



10 NM MSA 5400

AD ELEV 2435



Changes: RWY 08/26.

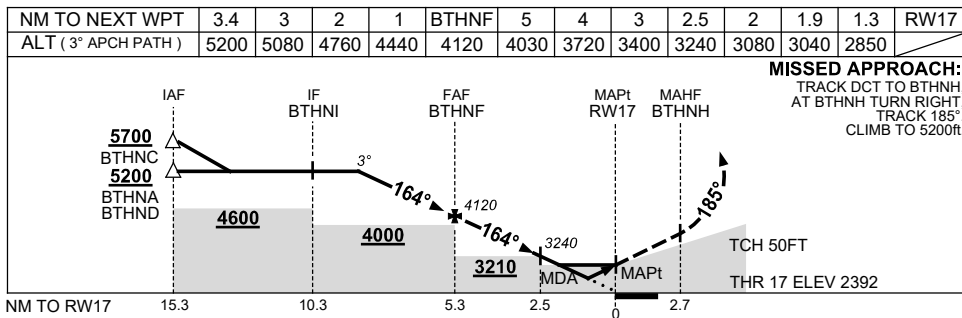
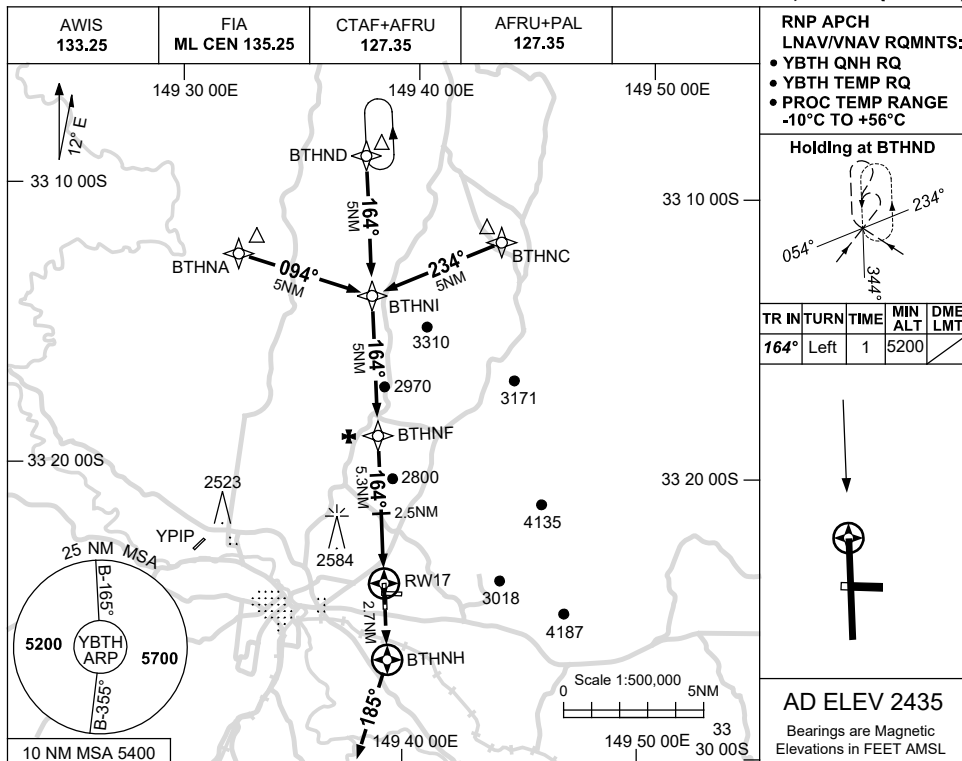
BTHDG02-172

USE QNH

RNP RWY 17

21 MAR 2024

BATHURST, NSW (YBTH)



**NOTES**

CATEGORY	A	B	C	D
LNAV/VNAV	<b>2850</b> (458-2.6)			NOT APPLICABLE
LNAV	<b>3040</b> (648-3.7)			
CIRCLING	<b>3810</b> (1375-2.4)		<b>3810</b> (1375-4.0)	
ALTERNATE	(1875-4.4)		(1875-6.0)	

1. MAX IAS:  
INITIAL : 220KT.

Changes: GLIDING SYMBOL REMOVED, Editorial.

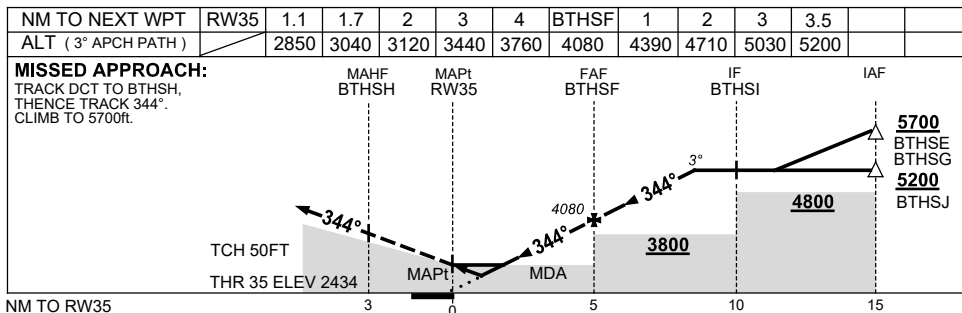
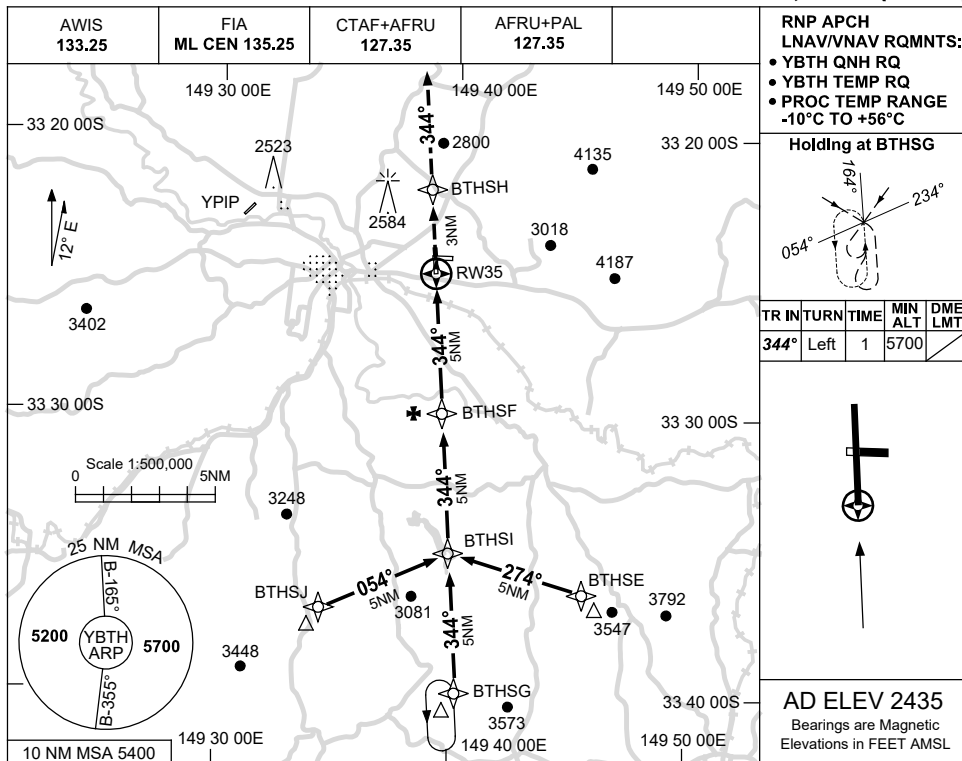
BTHGN01-178

USE QNH

RNP RWY 35

21 MAR 2024

BATHURST, NSW (YBTH)



**NOTES**

CATEGORY	A	B	C	D
LNAV/VNAV	2850 (416-2.3)			NOT APPLICABLE
LNAV	3040 (605-3.4)			
CIRCLING	3810 (1375-2.4)		3810 (1375-4.0)	
ALTERNATE	(1875-4.4)		(1875-6.0)	

1. MAX IAS:  
INITIAL : 210KT.

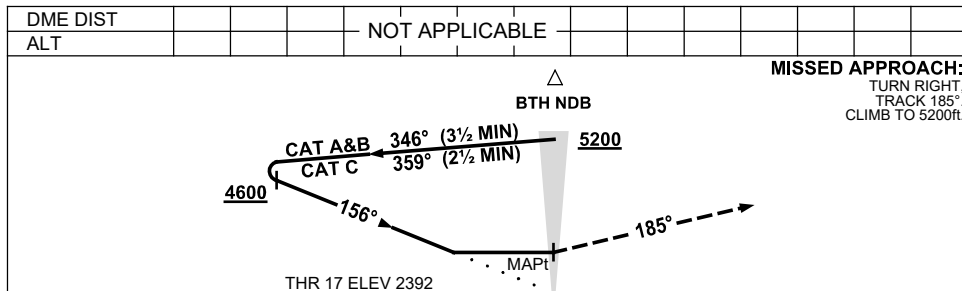
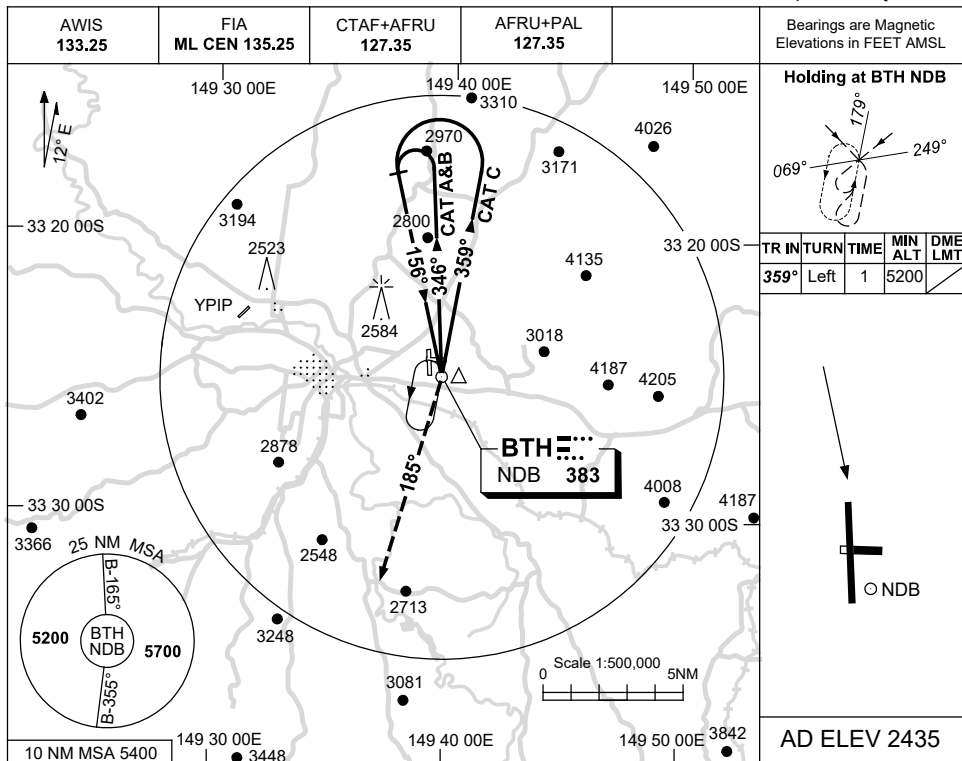
Changes: GLIDING SYMBOL REMOVED, Editorial.

BTHGN02-178

USE QNH

NDB RWY 17  
BATHURST, NSW (YBTH)

21 MAR 2024



**NOTES**

CATEGORY	A	B	C	D
S-I NDB	<b>3810</b> (1418-5.0)			NOT APPLICABLE
CIRCLING	<b>3810</b> (1375-2.4)	<b>3810</b> (1375-4.0)		
ALTERNATE	(1875-4.4)	(1875-6.0)		

Changes: GLIDING SYMBOL REMOVED, Editorial.

BTHNB01-178