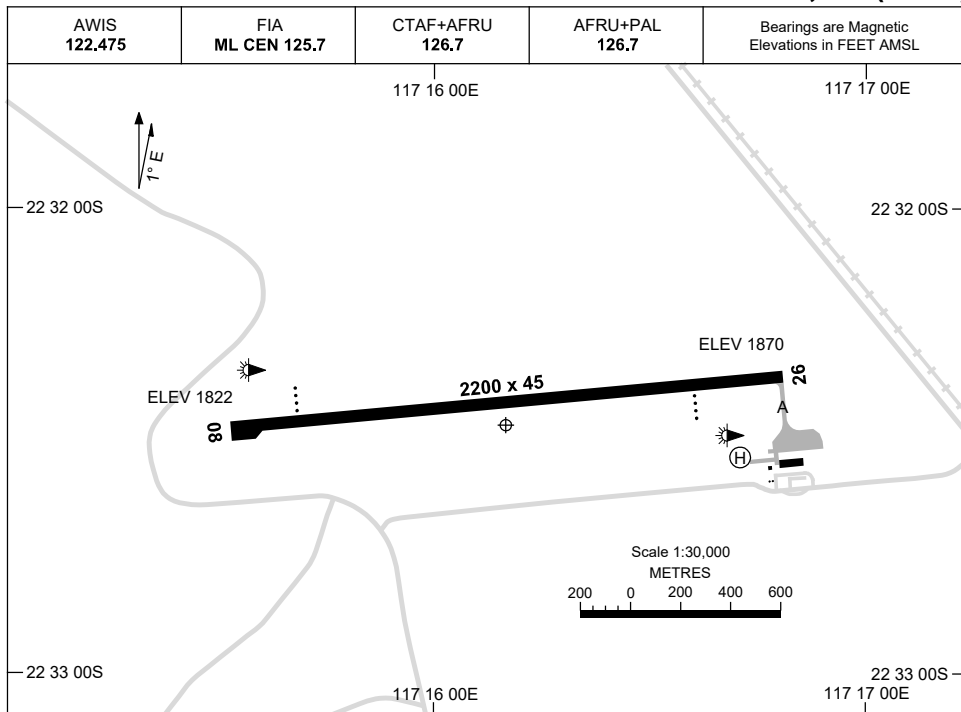


30 NOV 2023

AD ELEV 1870
22 32 28S 117 16 10E

AERODROME CHART
BOOLGEEDA, WA (YBGD)



| | |
|------------------------------|--|
| | AERODROME LIGHTING |
| RWY | TAXIWAY : BLUE EDGE RL : AFRU+PAL 126.7 , SDBY (10 SEC) |
| 08 <small>084</small> | PAPI 3.0° 49FT LIRL PTBL |
| <small>264</small> 26 | PAPI 3.0° 49FT LIRL PTBL |

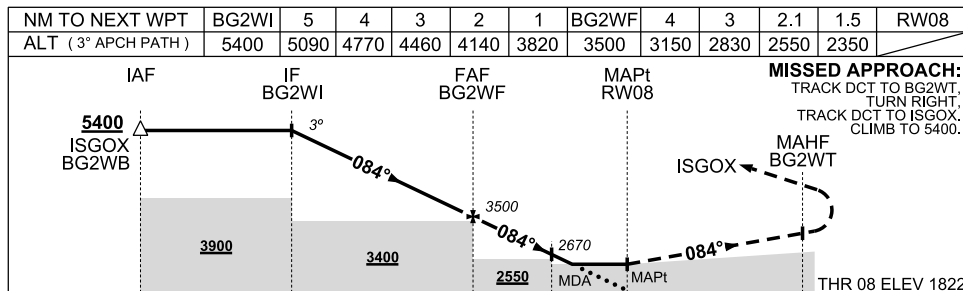
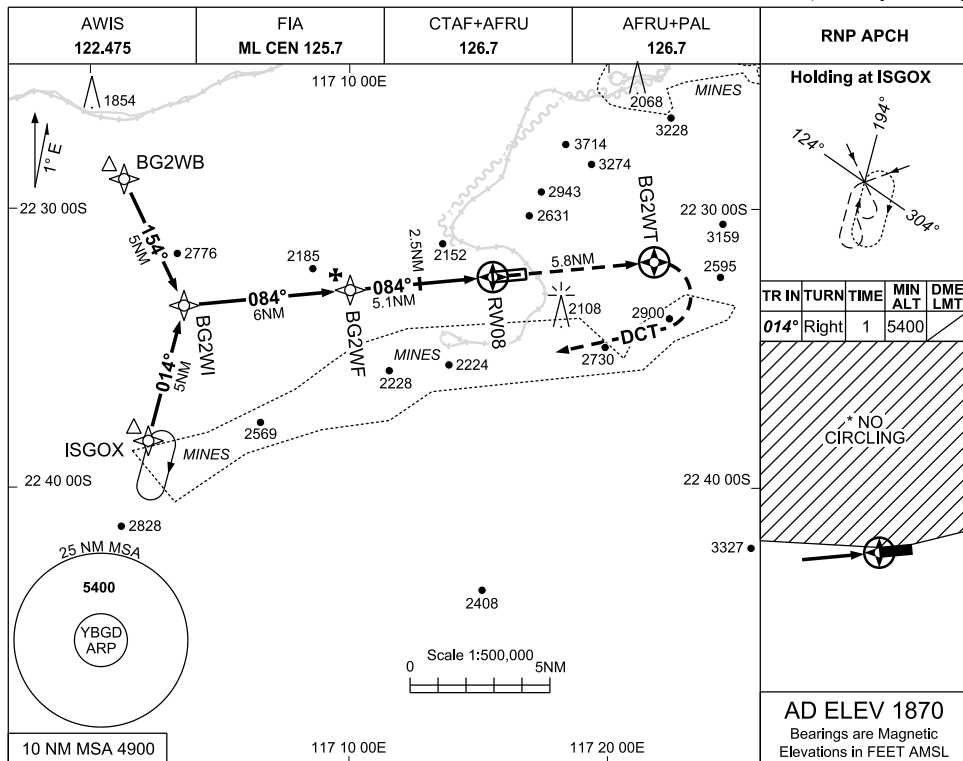
NOTES

1. FIA FREQ AVBL IN CIRCUIT AREA.
2. RWY 08/26 PTBL LIGHTING AVBL FOR EMERG USE ONLY, 2HR PN RQ.

21 MAR 2024

USE QNH

RNP RWY 08
BOOLGEEDA, WA (YBGD)



| CATEGORY | A | B | C | D |
|---------------|----------------|----------------|----------------|----------------|
| LNAV (2.5%) | 2550 (728-4.2) | | | |
| # LNAV (3.4%) | 2350 (528-3.0) | | | |
| * CIRCLING | 2550(680-2.0) | 2990(1120-2.4) | 3390(1520-4.0) | 3510(1640-5.0) |
| ALTERNATE | (1180-4.0) | (1620-4.4) | (2020-6.0) | (2140-7.0) |

- NOTES**
- MAX IAS 210KT
 - MIN MAP GRADIENT 3.4% TO BG2WT, THEN 2.5%
 - NO CIRCLING NORTH OF RWY 08/26
 - CAUTION: YBGD IN CLOSE PROXIMITY TO YEWA APPROACH PROCEDURES, YEWA LOCATED 22NM WNW OF YBGD.

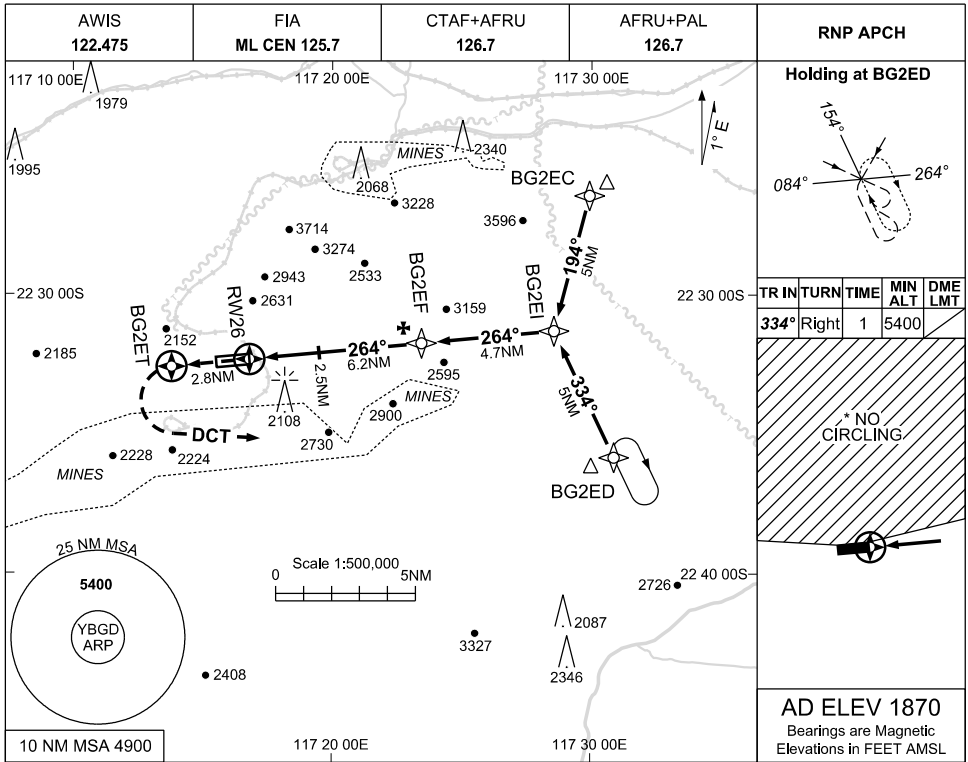
Changes: WPT EGIDA RENAMED ISGOX

BGDGN01-178

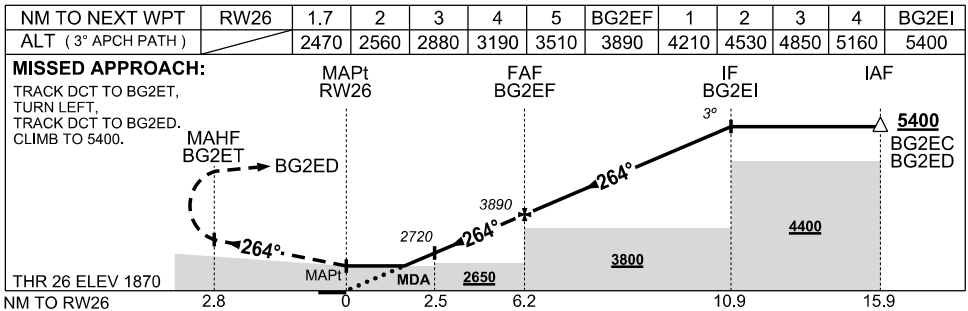
30 NOV 2023

USE QNH

RNP RWY 26
BOOLGEEDA, WA (YBGD)



| RNP APCH | | | | |
|--|--------|------|---------|---------|
| Holding at BG2ED | | | | |
| | | | | |
| TR | INTURN | TIME | MIN ALT | DME LMT |
| 334° | Right | 1 | 5400 | |
| * NO CIRCLING | | | | |
| AD ELEV 1870 | | | | |
| Bearings are Magnetic Elevations in FEET AMSL | | | | |



NOTES

| CATEGORY | A | B | C | D |
|------------|----------------|----------------|----------------|----------------|
| LNAV | 2470 (600-3.4) | | | |
| * CIRCLING | 2550(680-2.0) | 2990(1120-2.4) | 3390(1520-4.0) | 3510(1640-5.0) |
| ALTERNATE | (1180-4.0) | (1620-4.4) | (2020-6.0) | (2140-7.0) |

- MAX IAS 210KT
- NO CIRCLING NORTH OF RWY 08/26
- CAUTION: YBGD IN CLOSE PROXIMITY TO YEWA APPROACH PROCEDURES. YEWA LOCATED 22NM WNW OF YBGD.

Changes: CHART TITLE, EDITORIAL

BGDGN02-177