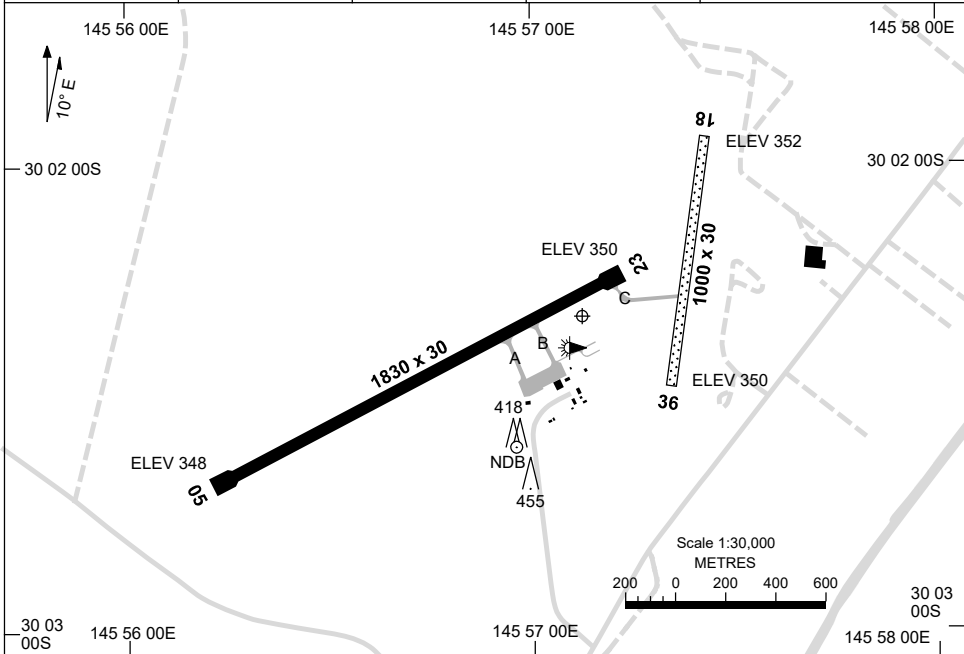


2 DEC 2021

AD ELEV 352
30 02 19S 145 57 07E

AERODROME CHART
BOURKE, NSW (YBKE)

AWIS 122.875	FIA ML CEN 125.35	CTAF+AFRU 126.7	AFRU+PAL 126.7	Bearings are Magnetic Elevations in FEET AMSL
-----------------	----------------------	--------------------	-------------------	--



RWY		AERODROME LIGHTING
		TAXIWAY : BLUE EDGE RL : AFRU+PAL 126.7 , SDBY (120 SEC)
05 <small>053</small>	LIRL	
<small>233</small> 23	LIRL	
18 <small>178</small>	NIL	
<small>358</small> 36	NIL	

NOTES

1. AWIS RQ 1 SEC TRANSMIT PULSE TO ACTIVATE.

Changes: ARP COORD.

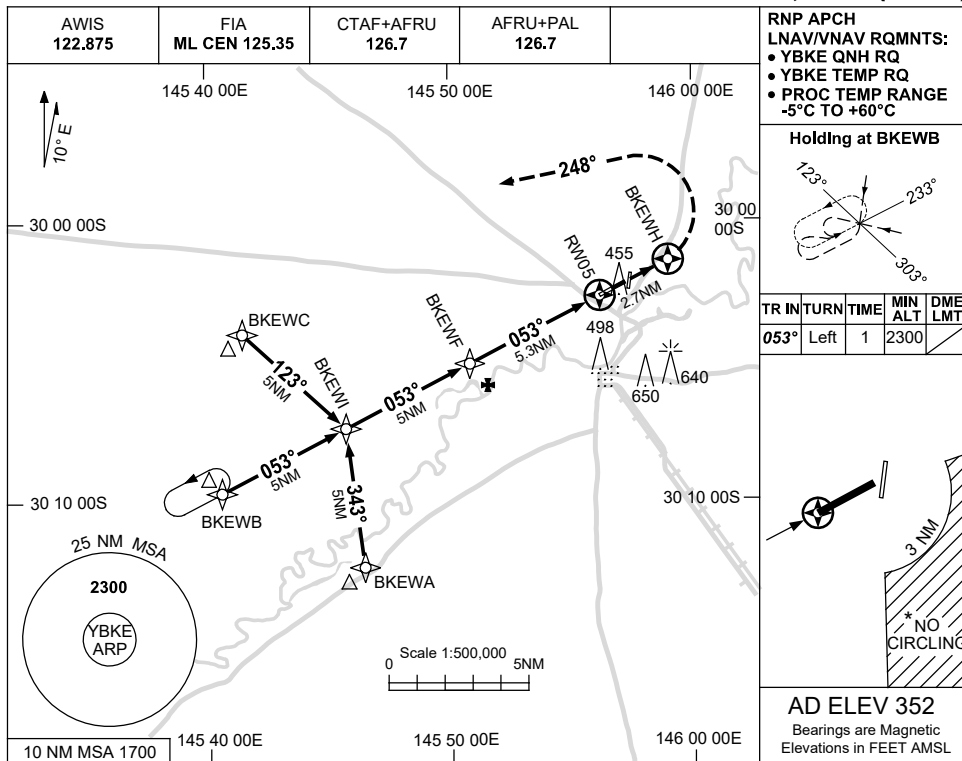
BKEAD01-169

USE QNH

RNP RWY 05

BOURKE, NSW (YBKE)

1 DEC 2022

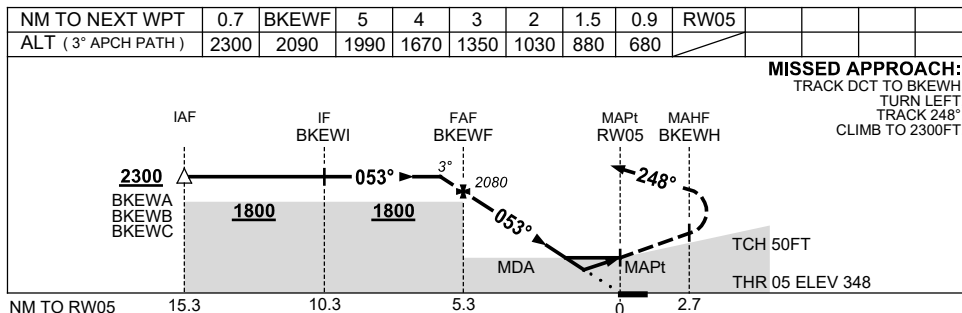


RNP APCH
LNAV/VNAV RQMTS:
 • YBKE QNH RQ
 • YBKE TEMP RQ
 • PROC TEMP RANGE
 -5°C TO +60°C

Holding at BKEWH

TR	IN	TURN	TIME	MIN ALT	DME LMT
053°	Left	1	2300		

AD ELEV 352
 Bearings are Magnetic
 Elevations in FEET AMSL



NOTES

CATEGORY	A	B	C	D
LNAV/VNAV		680 (332-1.9)		NOT APPLICABLE
LNAV		880 (528-3.0)		
CIRCLING *	950 (598-2.4)		1050 (698-4.0)	
ALTERNATE	(1098-4.4)		(1198-6.0)	

- MAX IAS:
INITIAL : 230KT.
- *2. NO CIRCLING BEYOND 3NM SOUTH EAST OF RWY 18/36.

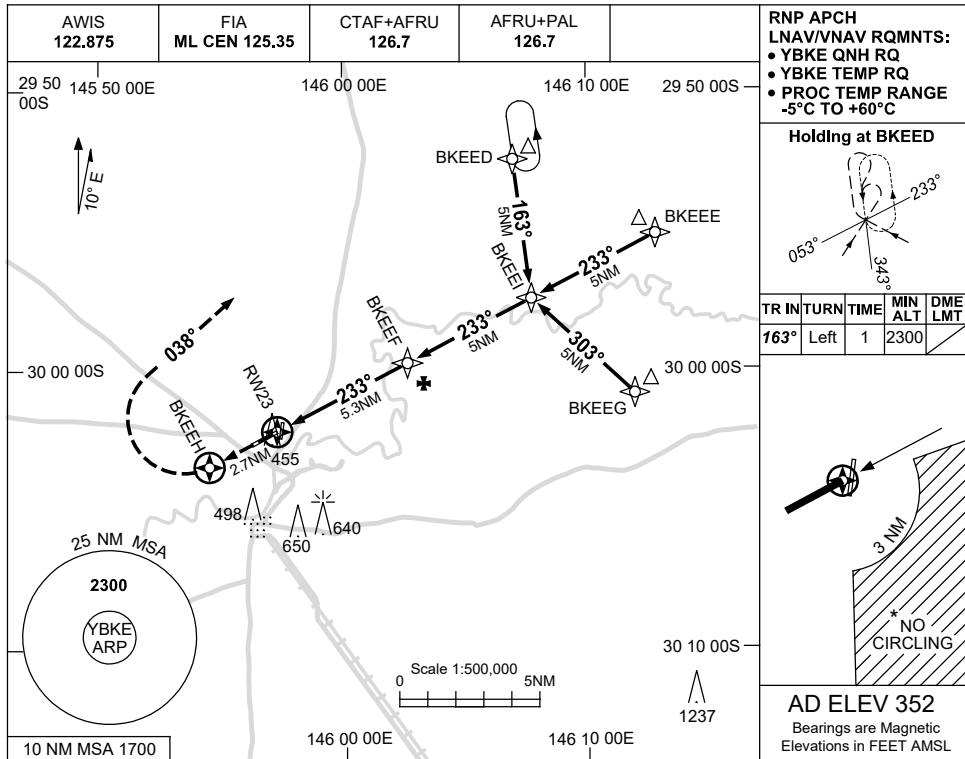
Changes: CHART TITLE, PBN SPECIFICATION BOX.

BKEGN01-173

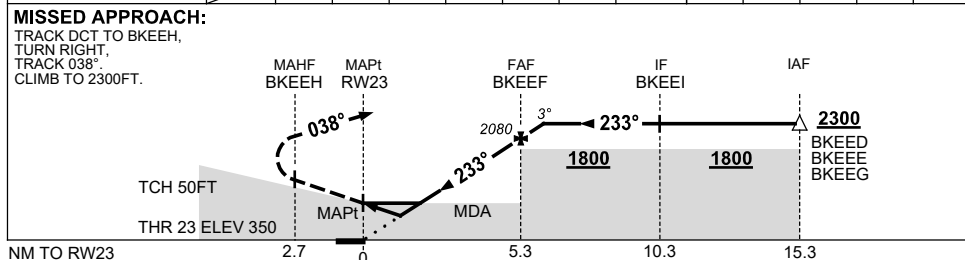
USE QNH

RNP RWY 23
BOURKE, NSW (YBKE)

1 DEC 2022



NM TO NEXT WPT	RWY23	0.9	1.5	2	3	4	5	BKEEF	0.7			
ALT (3° APCH PATH)		680	880	1040	1360	1670	1990	2090	2300			



NOTES

CATEGORY	A	B	C	D
LNAV/VNAV	680 (330-1.8)			NOT APPLICABLE
LNAV	880 (528-3.0)			
CIRCLING*	950 (598-2.4)		1050 (698-4.0)	
ALTERNATE	(1098-4.4)		(1198-6.0)	

1. MAX IAS:
INITIAL : 230KT.
- * 2. NO CIRCLING
BEYOND 3NM
SOUTH EAST OF
RWY 18/36.

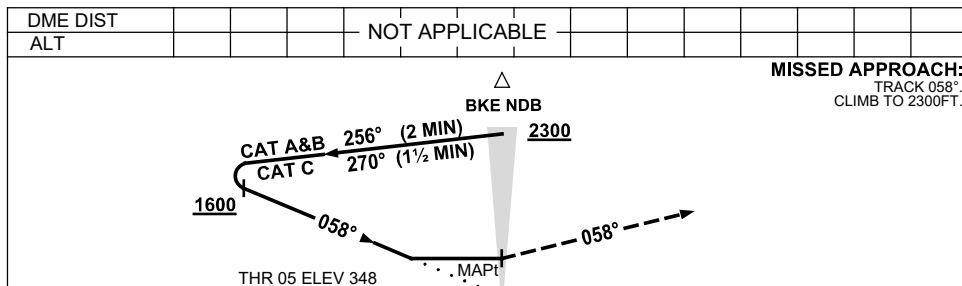
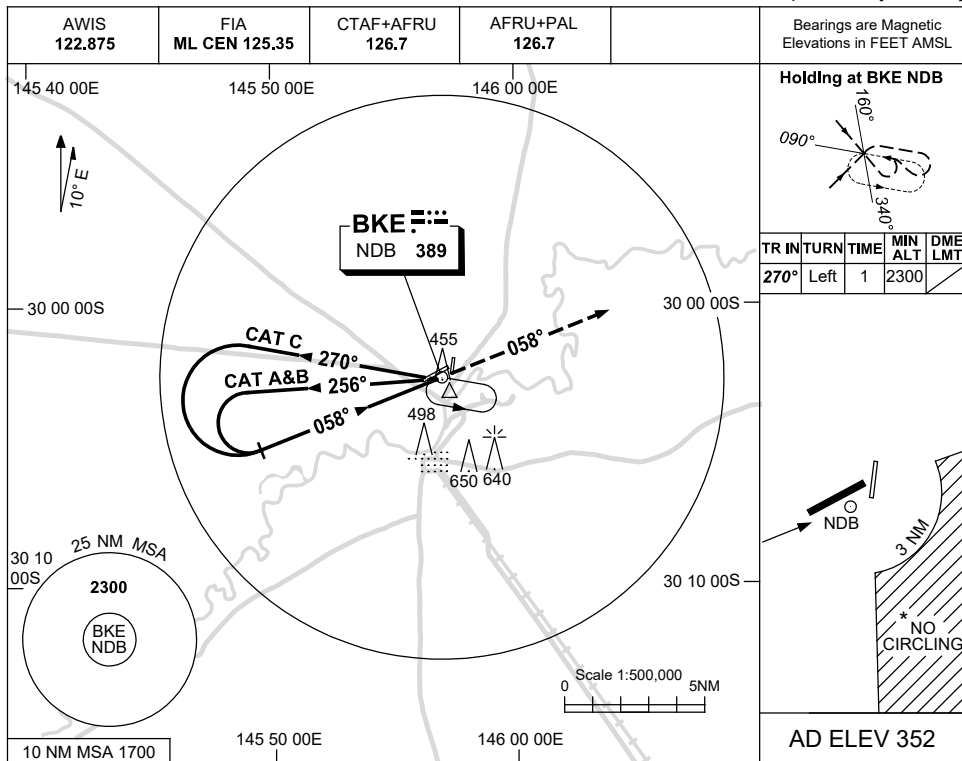
Changes: CHART TITLE, PBN SPECIFICATION BOX.

BKEGN02-173

USE QNH

NDB RWY 05
BOURKE, NSW (YBKE)

9 SEP 2021



CATEGORY	A	B	C	D
S-I NDB	930 (578-3.2)			NOT APPLICABLE
CIRCLING *	950 (598-2.4)	1050 (698-4.0)		
ALTERNATE	(1098-4.4)	(1198-6.0)		

- NOTES**
- MAX IAS: INITIAL : 210KT.
 - * NO CIRCLING BEYOND 3NM SOUTH EAST OF RWY 18/36.

Changes: THR ELEV.

BKENB01-168