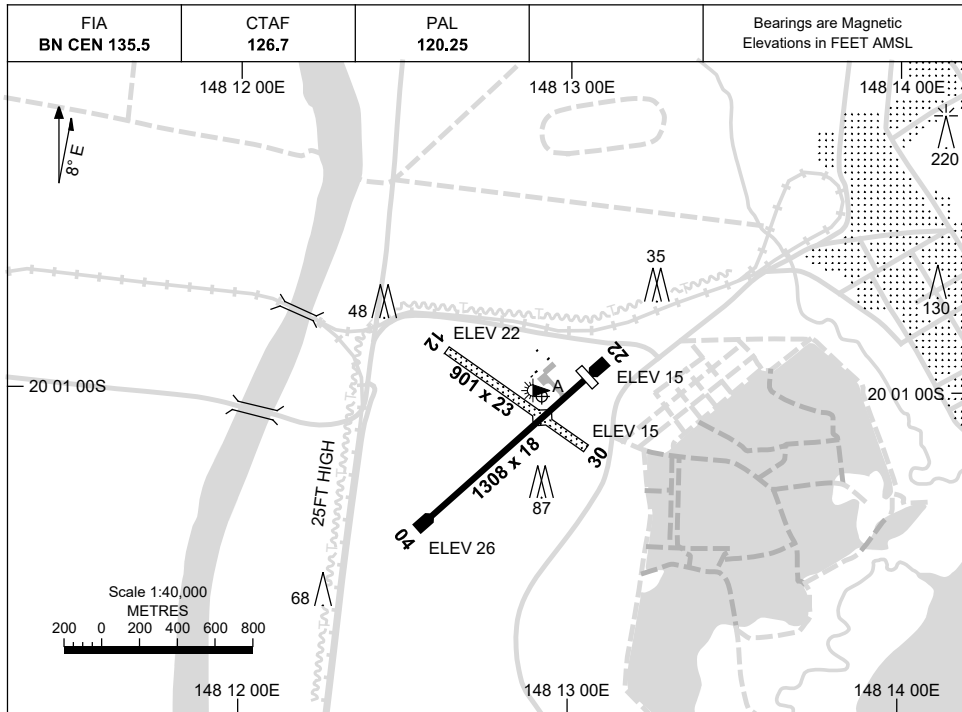


8 SEP 2022

AD ELEV 26  
20 01 04S 148 12 55E

**AERODROME CHART**  
**BOWEN, QLD (YBWN)**



	<b>AERODROME LIGHTING</b>
<b>RWY</b>	TAXIWAY : BLUE EDGE RL : PAL 120.25, SDBY (18 SEC)
<b>04</b> <small>040</small>	LIRL
<small>220</small> <b>22</b>	LIRL
<b>12</b> <small>118</small>	LIRL
<small>298</small> <b>30</b>	LIRL

**NOTES**

1. FIA FREQ 135.5 AVBL CIRCUIT AREA.

Changes: TWY A LABEL.

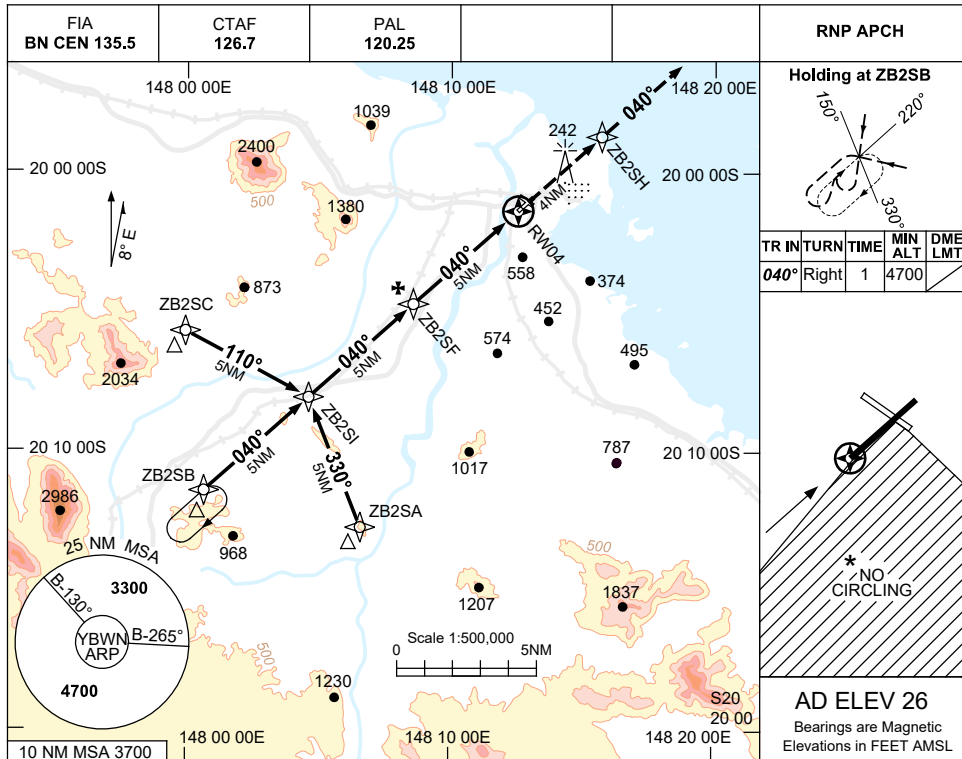
BWNAD01-172

USE QNH

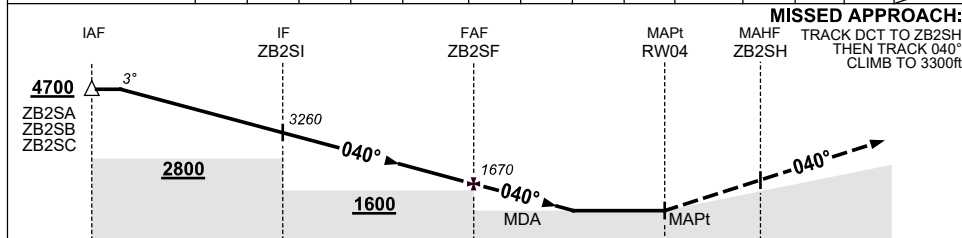
RNP S

**BOWEN, QLD (YBWN)**

21 MAR 2024



NM TO NEXT WPT	4.5	3	2	1	ZB2SI	4	3	2	1	ZB2SF	4	3.1	2.8	RW04
ALT (3° APCH PATH)	4700	4220	3900	3580	3260	2940	2620	2310	1990	1670	1350	1070	970	



**MISSED APPROACH:**  
 TRACK DCT TO ZB2SH,  
 THEN TRACK 040°,  
 CLIMB TO 3300ft.

**NOTES**

- MAX IAS:  
INITIAL : 210KT.
- NO CIRCLING IN SECT S OF RWY 04/22 AND RWY 12/30.
- HLDG OVERLAPS WITH YBPN RNP RWY 11 HLDG. ACFT SEPERATION NOT ASSURED.
- COLOUR: SEE SPEC NOTICES.

CATEGORY	A	B	C	D
CIRCLING *	970 (944-2.4)		1070(1044-4.0)	
ALTERNATE	(1444-4.4)		(1544-6.0)	

NOT APPLICABLE

Changes: WPT NAMING CONVENTION, NOTES.

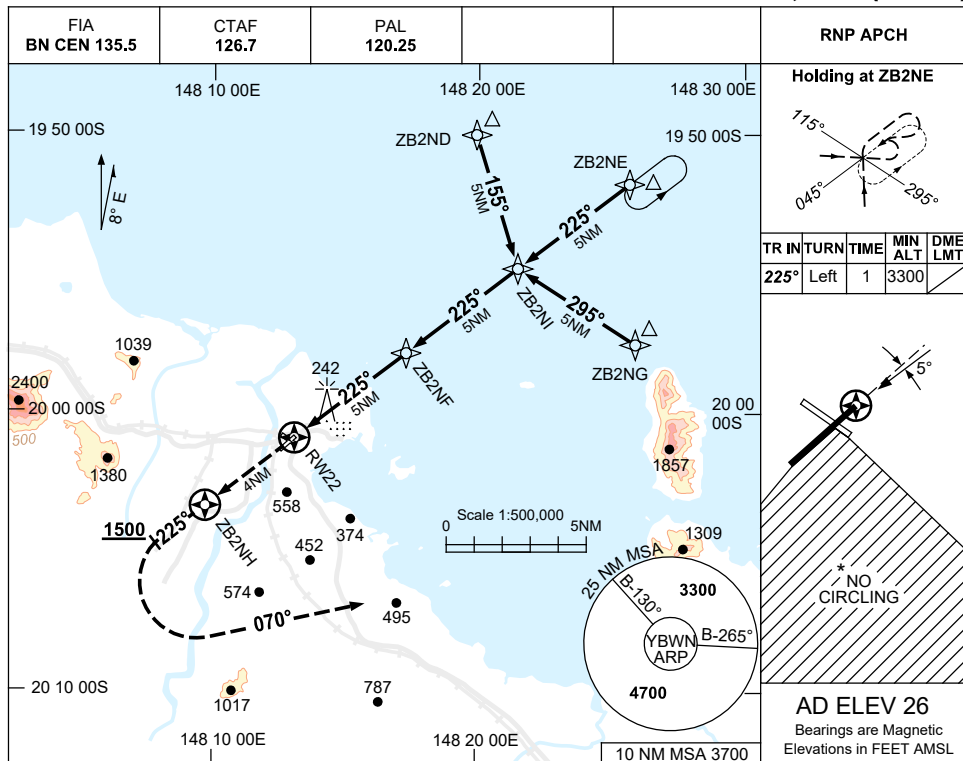
BWNGN01-178

USE QNH

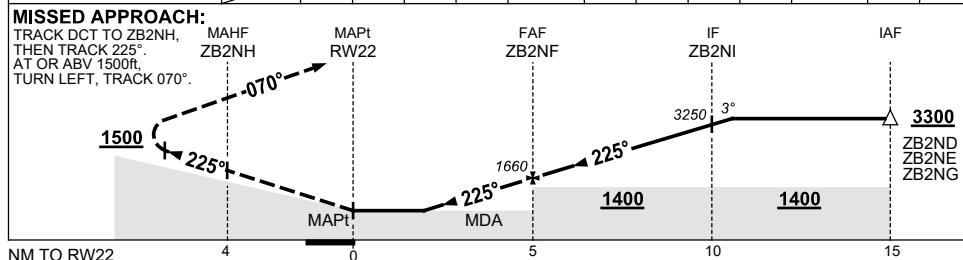
RNP N

**BOWEN, QLD (YBWN)**

21 MAR 2024



NM TO NEXT WPT	RW22	2.8	3	3.2	4	ZB2NF	1	2	3	4	ZB2NI	0.2
ALT (3° APCH PATH)		970	1020	1070	1340	1660	1980	2290	2610	2930	3250	3300



**NOTES**

CATEGORY	A	B	C	D
				NOT APPLICABLE
CIRCLING *	970 (944-2.4)		1070(1044-4.0)	
ALTERNATE	(1444-4.4)		(1544-6.0)	

- MAX IAS:  
 INITIAL : 210KT.  
 MAP TURN : 190KT.
- NO CIRCLING IN SECT'S OF RWY 04/22 AND RWY 12/30.
- COLOUR: SEE SPEC NOTICES.

Changes: WPT NAMING CONVENTION, MISSED APCH TEXT, Editorial.

BWNGN02-178