

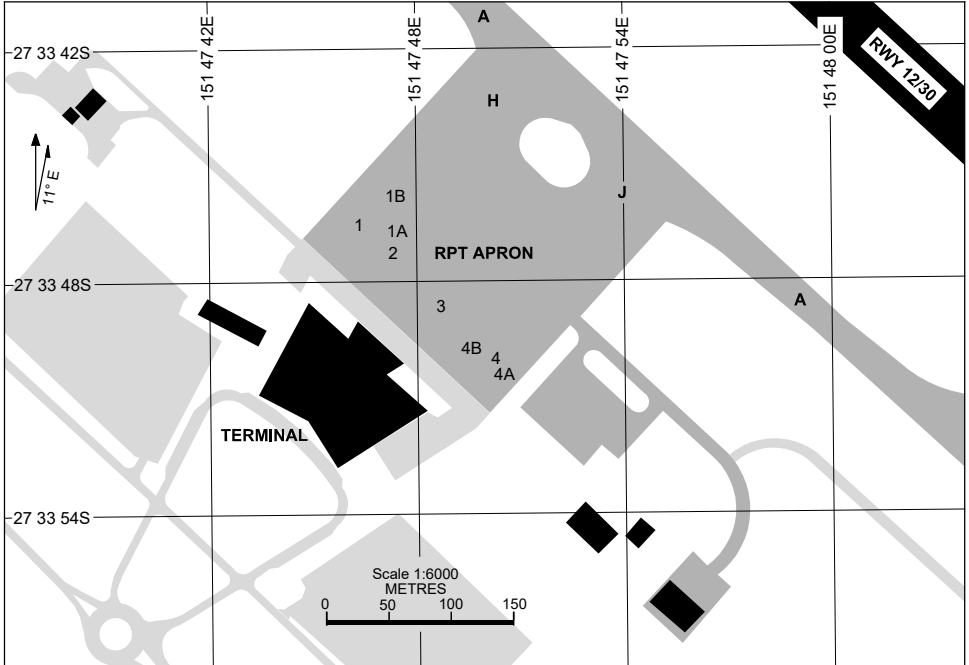
<b>AERODROME LIGHTING</b>	
<b>RWY</b>	TAXIWAY : GREEN CENTRELINE RL : PAL+AA 120.65 , SDBY (15 SEC)
<b>12</b> <small>122</small>	PAPI 3.0° 75FT MIRL RTIL
<small>302</small> <b>30</b>	PAPI 3.0° 75FT MIRL RTIL

**NOTES**

1. FIA FREQ 121.2 AVBL 500FT. ON GROUND COMMUNICATION WITH ATS DEPENDENT ON ACFT LOCATION. ALTERNATIVE FREQ 135.6.

17 JUN 2021

**BRISBANE WEST WELLCAMP, QLD (YBWW)**



**PARKING POSITION INFORMATION**

STAND	CO-ORDINATES		ELEV (ft)	CAPACITY	HYDRANT FUEL
1	27 33 46.55S	151 47 46.36E	1470	B738/A320/E170	NIL
1A	27 33 46.78S	151 47 47.46E	1470	B744/B772	NIL
1B	27 33 45.83S	151 47 47.43E	1470	B748	NIL
2	27 33 47.25S	151 47 47.32E	1470	B738/A320/E170	NIL
3	27 33 48.64S	151 47 48.74E	1470	F100/E170/DH8D	NIL
4	27 33 49.94S	151 47 50.28E	1470	F100/DH8D	NIL
4A	27 33 50.38S	151 47 50.51E	1470	B350	NIL
4B	27 33 49.73S	151 47 49.60E	1470	B350	NIL

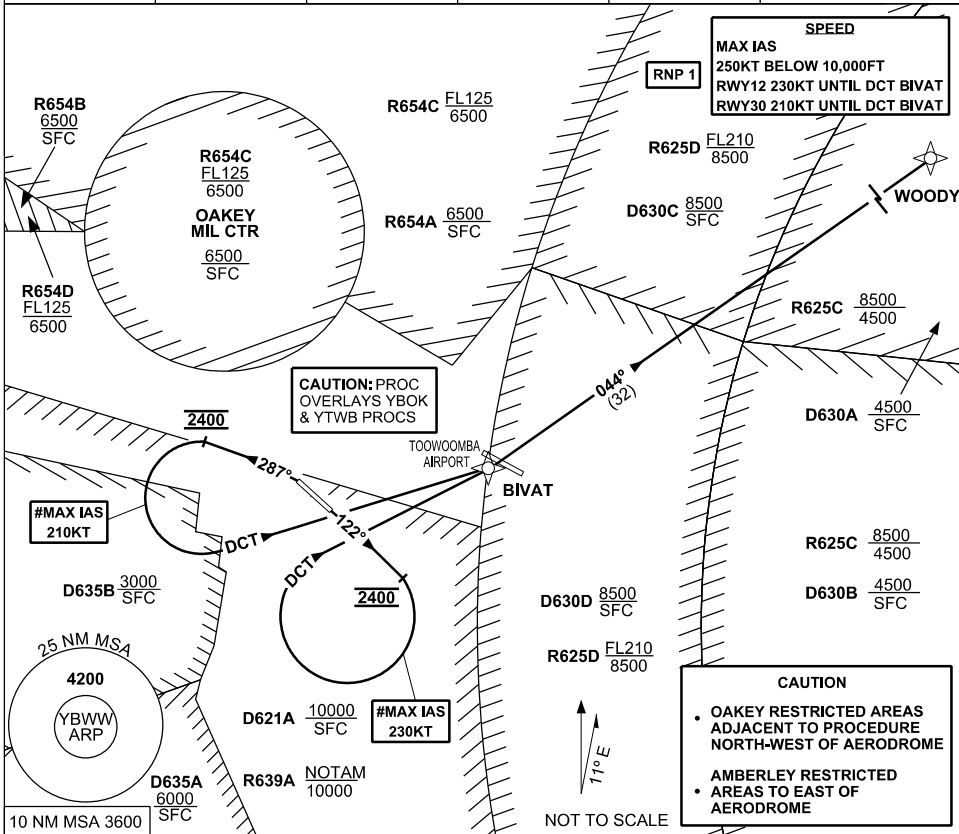
Changes: NEW CHART.

BWWAP01-167

**STANDARD INSTRUMENT DEPARTURE (SID)  
RWYS EAST (RNAV)  
BRISBANE WEST WELLCAMP, QLD (YBWW)**

**16 JUN 2022**

AWIS 133.6	FIA BN CEN 121.2	CTAF+AFRU 127.65	PAL+AA 120.65		Bearings are Magnetic Elevations in FEET AMSL
---------------	---------------------	---------------------	------------------	--	--



**WOODY ONE DEPARTURE**

**RWY 12**

# **MAX IAS** 230KT UNTIL tracking DCT BIVAT  
GRAD 5% to 2400FT, thence 3.3%

- Track 122°
- **AT** 2400FT turn **RIGHT** track DCT to BIVAT
- Track 044° to WOODY
- Intercept flight planned route

**RWY 30**

# **MAX IAS** 210KT UNTIL tracking DCT BIVAT  
GRAD 6% to 2400FT, thence 3.3%

- **NOT BEFORE DER** turn **LEFT** track 287°
- **AT** 2400FT turn **LEFT** track DCT to BIVAT
- Track 044° to WOODY
- Intercept flight planned route

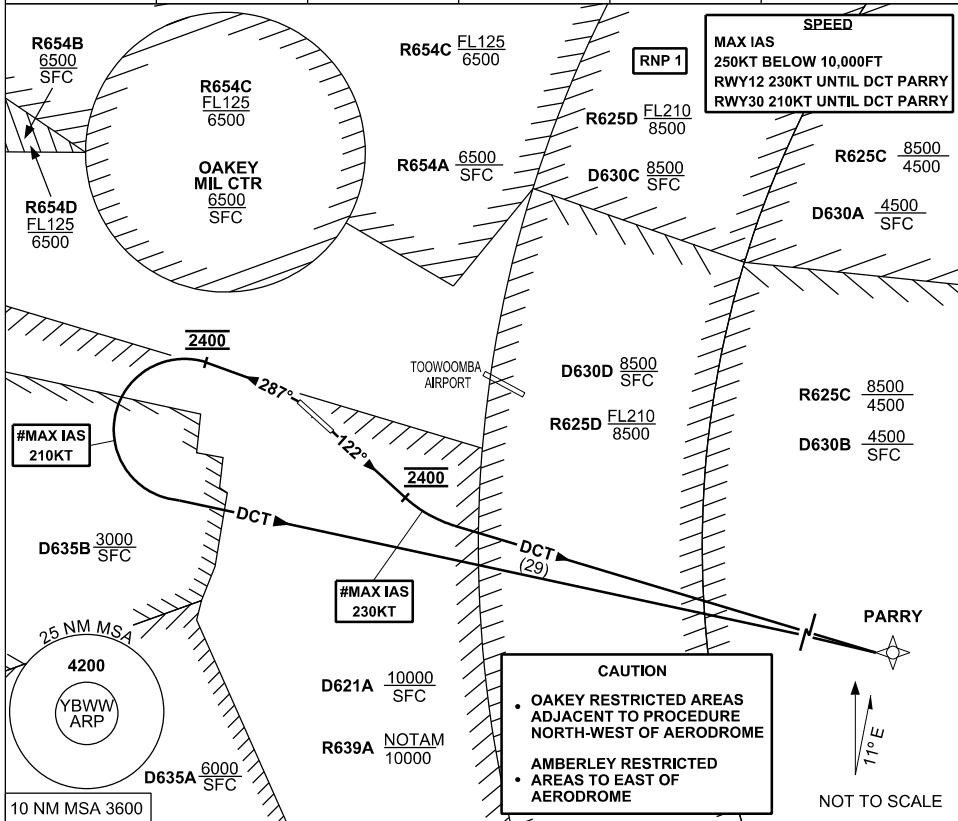
Changes: R654ABCD, OK MIL CTR

BWWDP01-171

# STANDARD INSTRUMENT DEPARTURE (SID) RWYS EAST (JET) (RNAV) BRISBANE WEST WELLCAMP, QLD (YBWW)

16 JUN 2022

AWIS 133.6	FIA BN CEN 121.2	CTAF+AFRU 127.65	PAL+AA 120.65		Bearings are Magnetic Elevations in FEET AMSL
---------------	---------------------	---------------------	------------------	--	--



## PARRY ONE DEPARTURE

### RWY 12

- # MAX IAS 230KT UNTIL tracking DCT PARRY
- GRAD 5% to 2400FT, thence 3.3%
- Track 122°
- AT 2400FT turn **LEFT** track DCT to PARRY
- Intercept flight planned route

### RWY 30

- # MAX IAS 210KT UNTIL tracking DCT PARRY
- GRAD 6% to 2400FT, thence 3.3%
- **NOT BEFORE DER** turn **LEFT** track 287°
- AT 2400FT turn **LEFT** track DCT to PARRY
- Intercept flight planned route

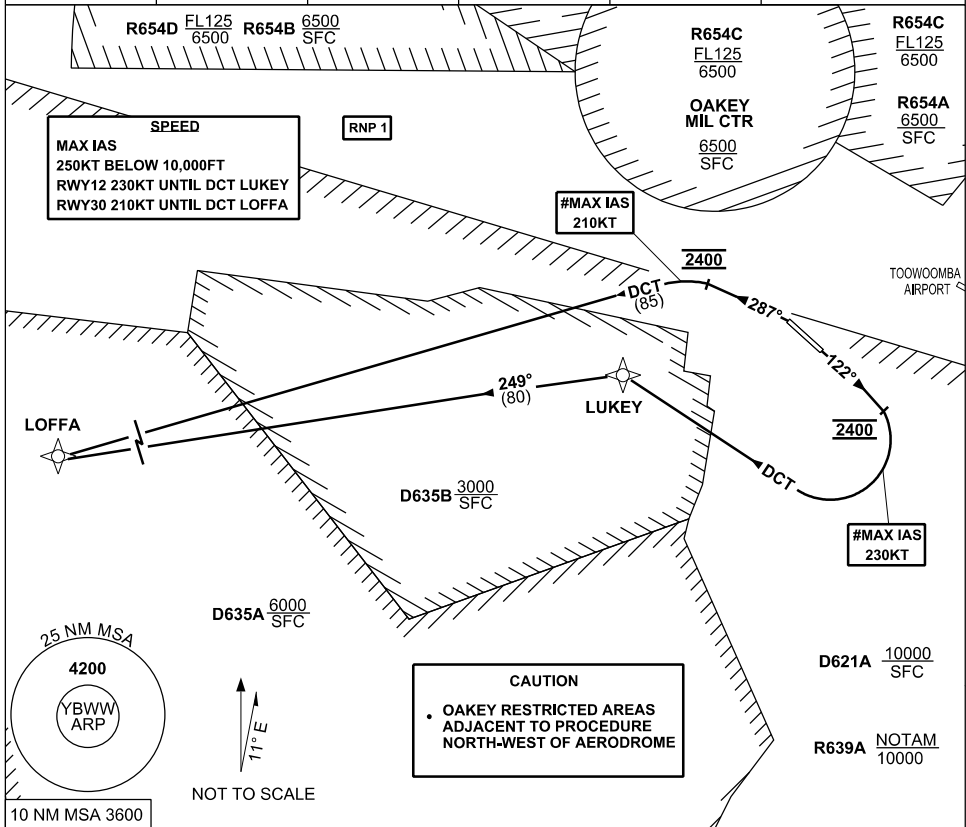
Changes: R654ABCD, OK MIL CTR

BWWDP02-171

# STANDARD INSTRUMENT DEPARTURE (SID) RWYS WEST (RNAV) BRISBANE WEST WELLCAMP, QLD (YBWW)

16 JUN 2022

AWIS 133.6	FIA BN CEN 121.2	CTAF+AFRU 127.65	PAL+AA 120.65	Bearings are Magnetic Elevations in FEET AMSL
---------------	---------------------	---------------------	------------------	--



## LOFFA ONE DEPARTURE

### RWY 12

- # MAX IAS 230KT UNTIL tracking DCT LUKEY  
 GRAD 5% to 2400FT, thence 3.3%
- Track 122°
  - AT 2400FT turn **RIGHT** track DCT to LUKEY
  - Turn **LEFT** Track 249° to LOFFA
  - Intercept flight planned route

### RWY 30

- # MAX IAS 210KT UNTIL tracking DCT LOFFA  
 GRAD 6% to 2400FT, thence 3.3%
- **NOT BEFORE DER** turn **LEFT** Track 287°
  - AT 2400FT turn **LEFT** track DCT to LOFFA
  - Intercept flight planned route

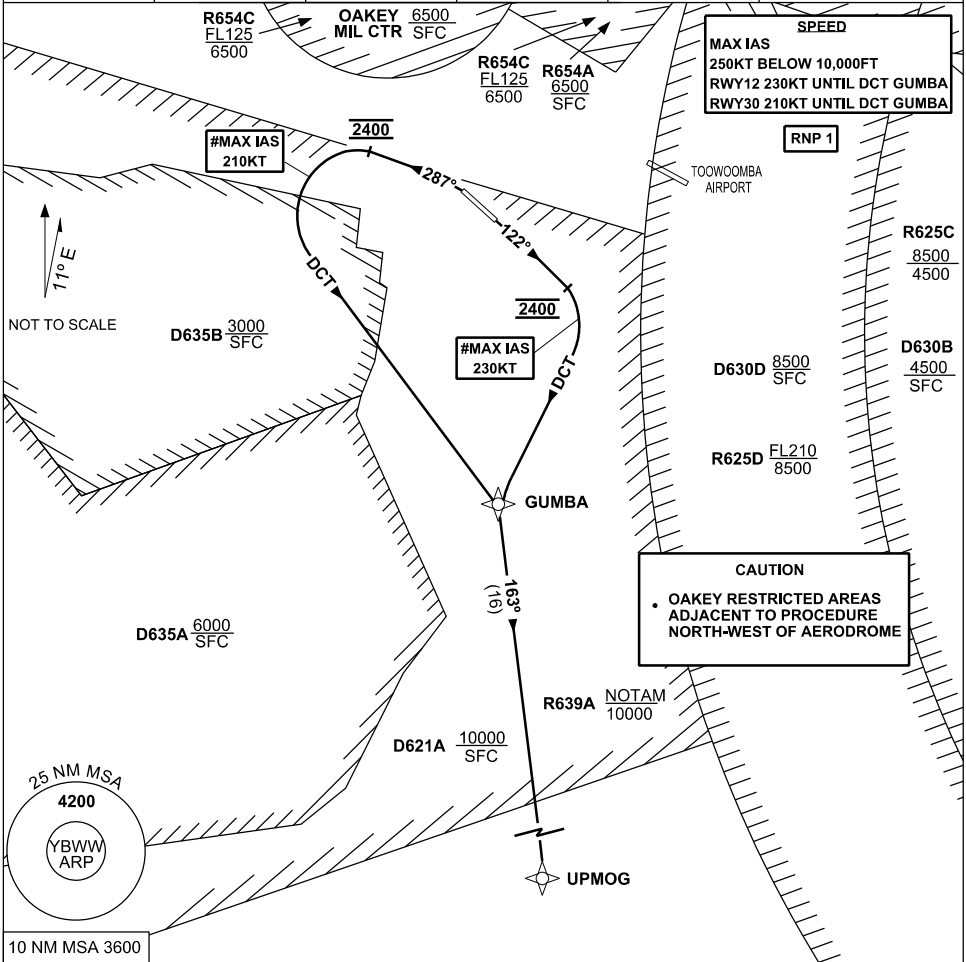
Changes: R654ABCD, OK MIL CTR

BWWDP03-171

**STANDARD INSTRUMENT DEPARTURE (SID)  
RWYS SOUTH (RNAV)  
BRISBANE WEST WELLCAMP, QLD (YBWW)**

16 JUN 2022

AWIS 133.6	FIA BN CEN 121.2	CTAF+AFRU 127.65	PAL+AA 120.65	Bearings are Magnetic Elevations in FEET AMSL
---------------	---------------------	---------------------	------------------	--



<p><b>UPMOG ONE DEPARTURE</b></p> <p><b>RWY 12</b></p> <p># <b>MAX IAS</b> 230KT UNTIL tracking DCT GUMBA GRAD 5% to 2400FT, thence 3.3%</p> <ul style="list-style-type: none"> <li>Track 122°</li> <li><b>AT 2400FT</b> turn <b>RIGHT</b> track DCT to GUMBA</li> <li>Track 163° to UPMOG</li> <li>Intercept flight planned route</li> </ul>	<p><b>RWY 30</b></p> <p># <b>MAX IAS</b> 210KT UNTIL tracking DCT GUMBA GRAD 6% to 2400FT, thence 3.3%</p> <ul style="list-style-type: none"> <li><b>NOT BEFORE DER</b> turn <b>LEFT</b> Track 287°</li> <li><b>AT 2400FT</b> turn <b>LEFT</b> track DCT to GUMBA</li> <li>Track 163° to UPMOG</li> <li>Intercept flight planned route</li> </ul>
---	---

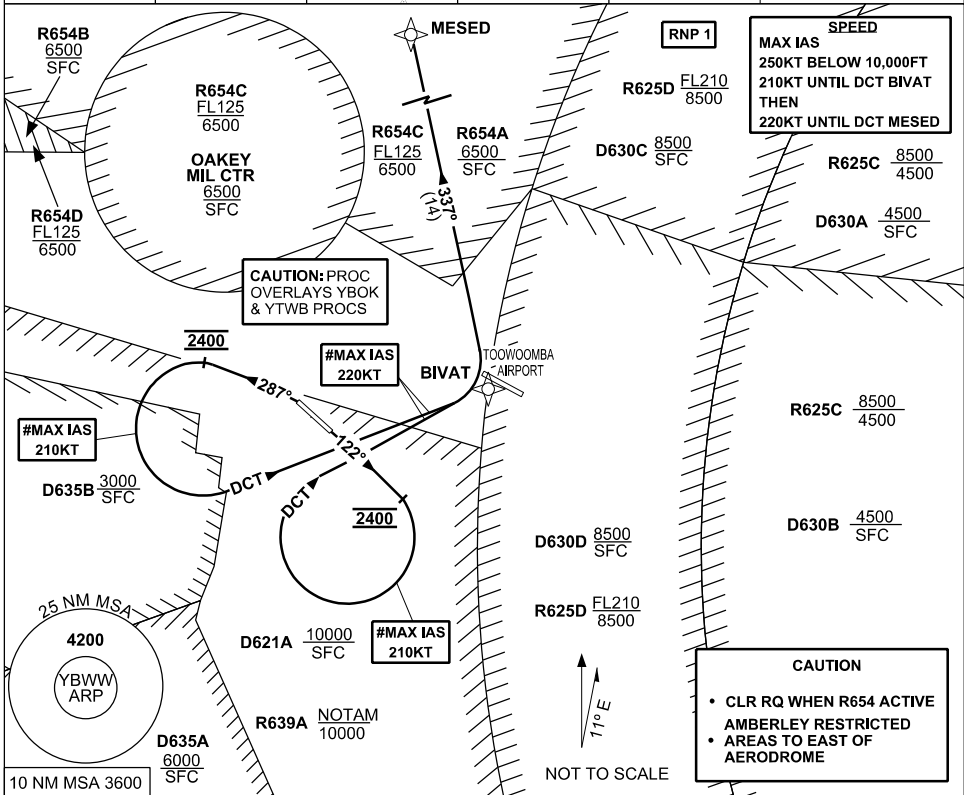
Changes: R654ABCD, OK MIL CTR

BWWD04-171

**STANDARD INSTRUMENT DEPARTURE (SID)  
RWYS NORTH (RNAV)  
BRISBANE WEST WELLCAMP, QLD (YBWW)**

**16 JUN 2022**

AWIS 133.6	FIA BN CEN 121.2	CTAF+AFRU 127.65	PAL+AA 120.65		Bearings are Magnetic Elevations in FEET AMSL
---------------	---------------------	---------------------	------------------	--	--



**MESED ONE DEPARTURE**

**RWY 12**

- #MAX IAS 210KT UNTIL tracking DCT BIVAT THEN 220KT UNTIL tracking DCT MESED**
- GRAD 5% to 2400FT, thence 3.3%
- Track 122°
  - AT 2400FT turn **RIGHT** track DCT to BIVAT
  - Track 337° to MESED
  - Intercept flight planned route

**RWY 30**

- #MAX IAS 210KT UNTIL tracking DCT BIVAT THEN 220KT UNTIL tracking DCT MESED**
- GRAD 6% to 2400FT, thence 3.3%
- **NOT BEFORE DER** turn **LEFT** Track 287°
  - AT 2400FT turn **LEFT** track DCT to BIVAT
  - Track 337° to MESED
  - Intercept flight planned route

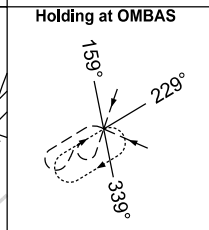
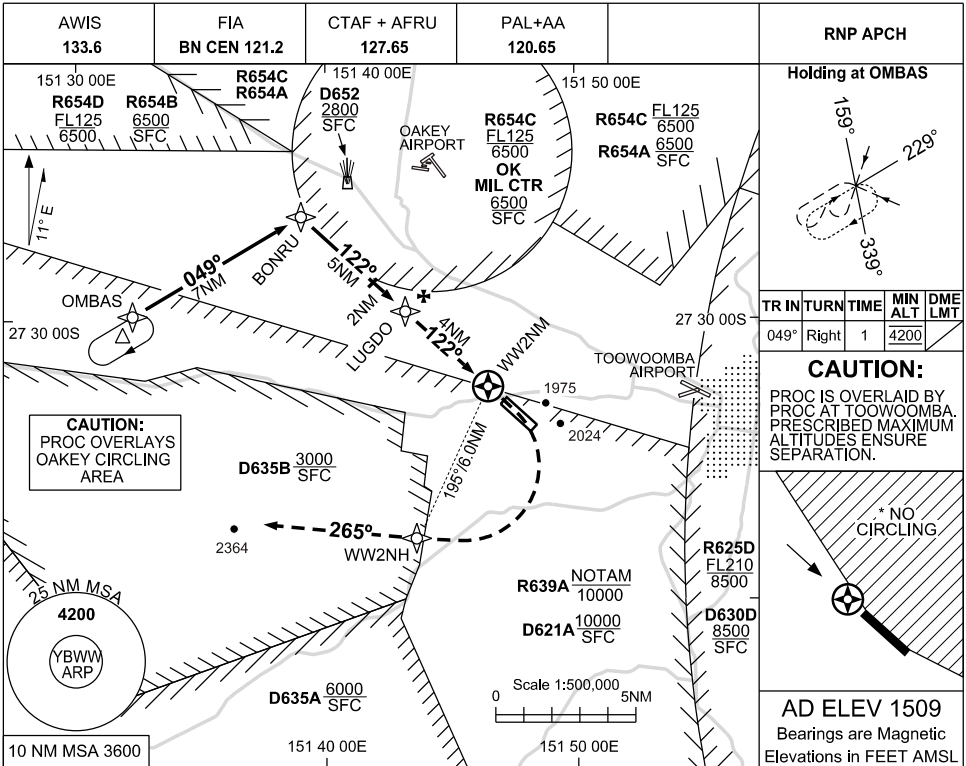
Changes: R654ABCD, OK MIL CTR

BWWDP05-171

16 JUN 2022

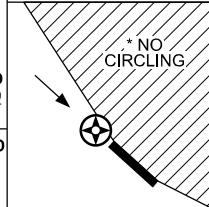
USE QNH  
BRISBANE WEST WELLCAMP, QLD (YBWW)

RNP Y RWY 12



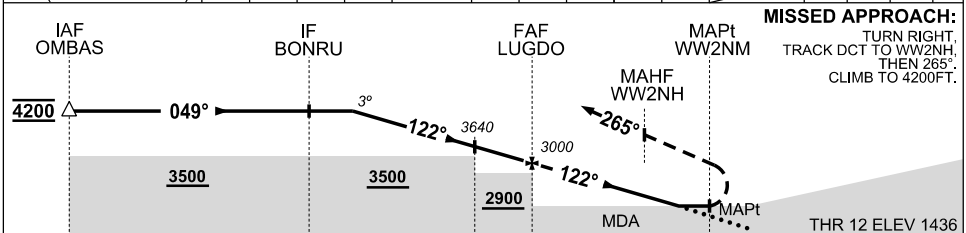
TR IN	TURN	TIME	MIN ALT	DME LMT
049°	Right	1	4200	

**CAUTION:**  
PROC IS OVERLAID BY PROC AT TOOWOOMBA. PRESCRIBED MAXIMUM ALTITUDES ENSURE SEPARATION.



**AD ELEV 1509**  
Bearings are Magnetic  
Elevations in FEET AMSL

NM TO NEXT WPT	3.8	3	2	1	LUGDO	3	2	1.1	1	0.8	WW2NM
ALT (3° APCH PATH)	4200	3960	3640	3320	3000	2680	2360	2090	2040	1980	



**MISSED APPROACH:**  
TURN RIGHT  
TRACK DCT TO WW2NH,  
THEN 265°  
CLIMB TO 4200FT.

NM TO WW2NM: 16, 9, 6, 4, 0.8

- NOTES**
1. MAX IAS HOLDING INITIAL & MAP : 210KT.
  - \*2. NO CIRCLING EAST OF RWY 12/30.
  - #3. MIN MAP GRAD 5% TO 2500FT, THEN 2.5%.
  4. PROC NOT AVBL WHEN YBOK AIRSPACE ACTIVE.
  5. PRD OPR HR VIA NOTAM EXCEPT D652: H24 D835AB: HJ

CATEGORY	A	B	C	D
LNAV (2.5% MAP)		2090	(654 - 3.6)	
LNAV (5% MAP) #		1980	(544 - 3.0)	
CIRCLING *	2430	(921 - 2.4)	NOT AUTHORISED	
ALTERNATE	(1421 - 4.4)		(1611 - 6.0)	(1611 - 7.0)

Changes: R654ABCD, OK MIL CTR

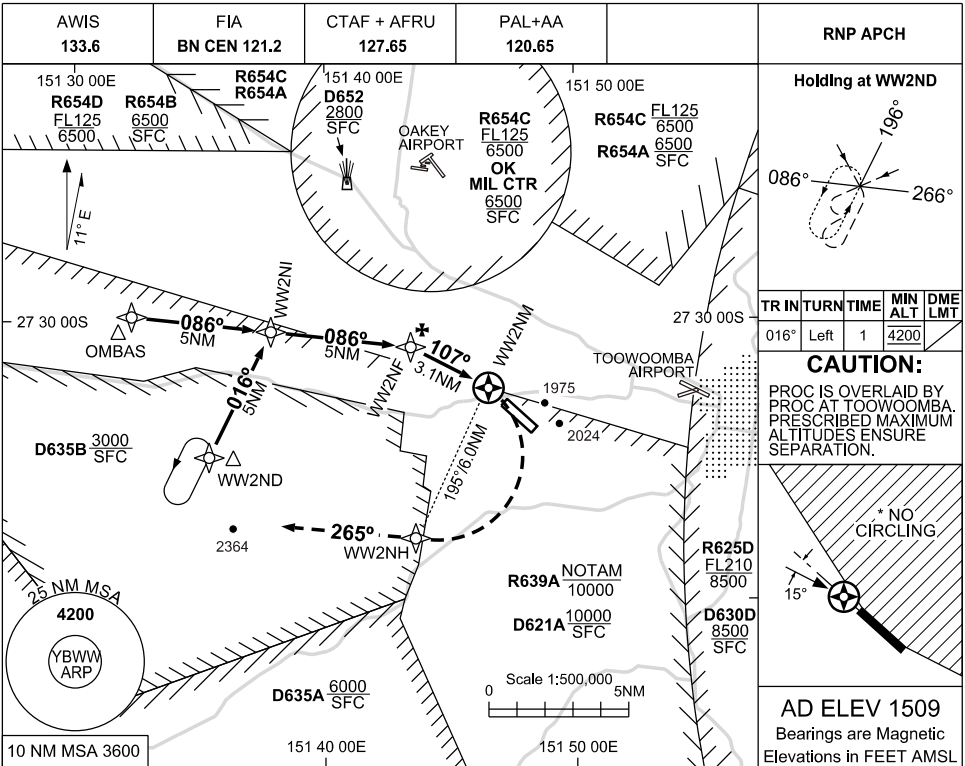
BWWGN01-171



16 JUN 2022

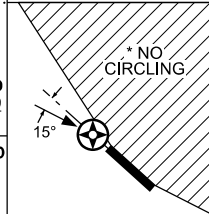
USE QNH  
BRISBANE WEST WELLCAMP, QLD (YBWW)

RNP Z RWY 12



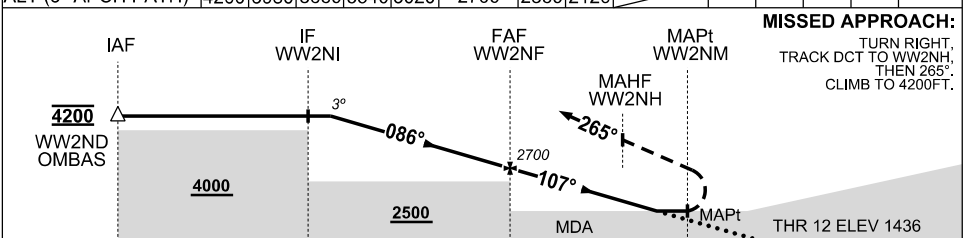
TR IN	TURN TIME	MIN ALT	DME LMT
016°	Left	1	4200

**CAUTION:**  
PROC IS OVERLAID BY PROC AT TOOWOOMBA. PRESCRIBED MAXIMUM ALTITUDES ENSURE SEPARATION.



**AD ELEV 1509**  
Bearings are Magnetic  
Elevations in FEET AMSL

NM TO NEXT WPT	4.7	4	3	2	1	WW2NF	2	1.2	WW2NM				
ALT (3° APCH PATH)	4200	3980	3660	3340	3020	2700	2360	2120					



NM TO WW2NM: 13.1, 8.1, 3.1, 0.8

**NOTES**  
1. MAX IAS HOLDING INITIAL & MAP : 210KT.

CATEGORY	A	B	C	D
LNAV	2120 (684 - 3.8)		2120 (684 - 5.0)	NOT AUTHORISED
CIRCLING *	2430 (921 - 2.4)		NOT AUTHORISED	
ALTERNATE	(1421 - 4.4)		(1611 - 6.0)	

\*2. NO CIRCLING EAST OF RWY 12/30.  
3. PRD OPR HR VIA NOTAM EXCEPT D652: H24 D635AB: HJ

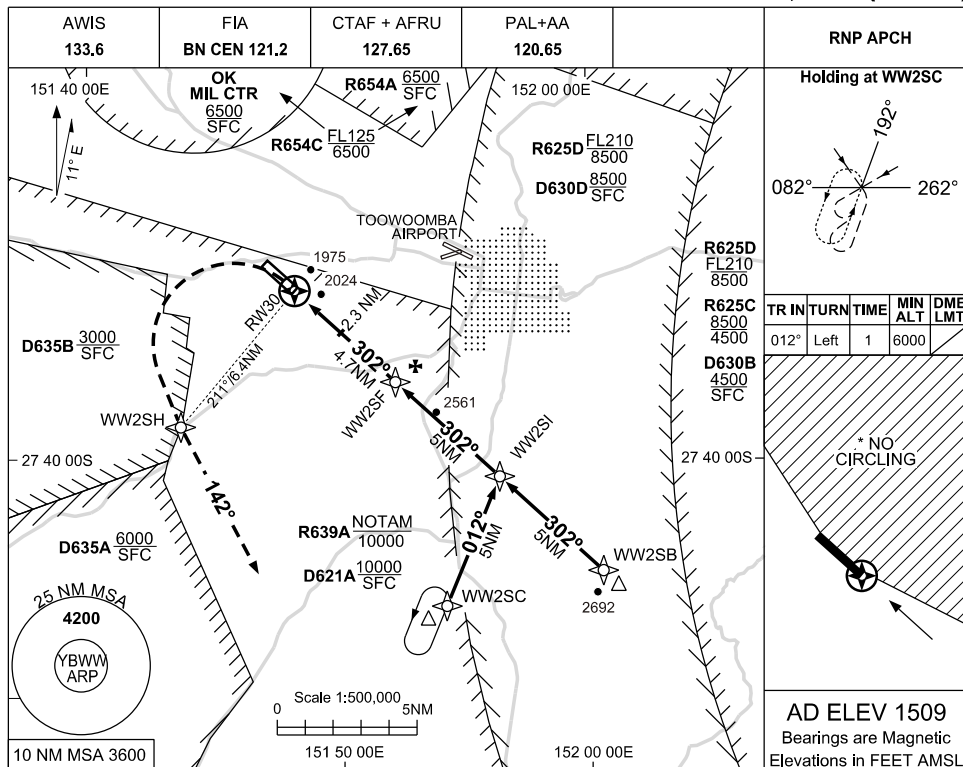
Changes: R654ABCD, OK MIL CTR

BWWGN02-171

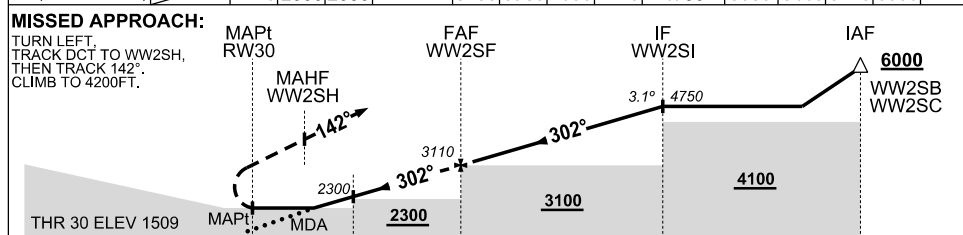
23 MAR 2023

# USE QNH BRISBANE WEST WELLCAMP, QLD (YBWW)

RNP RWY 30



NM TO NEXT WPT	RW30	2.2	3	4	WW2SF	1	2	3	4	WW2SI	1	2	3	3.8
ALT (3.1° APCH PATH)		2270	2550	2880	3110	3430	3760	4090	4420	4750	5080	5410	5740	6000



## NOTES

1. MAX IAS HOLDING, INITIAL & MAP : 210KT.
- \*2. NO CIRCLING EAST OF RWY 12/30.
3. PRD OPR HR VIA NOTAM EXCEPT D635AB: HJ

CATEGORY	A	B	C	D
LNAV	2270 (761 - 4.2)			
CIRCLING *	2430 (921 - 2.4)		NOT AUTHORISED	
ALTERNATE	(1421 - 4.4)		(1611 - 6.0)	(1611 - 7.0)

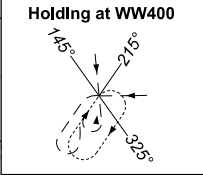
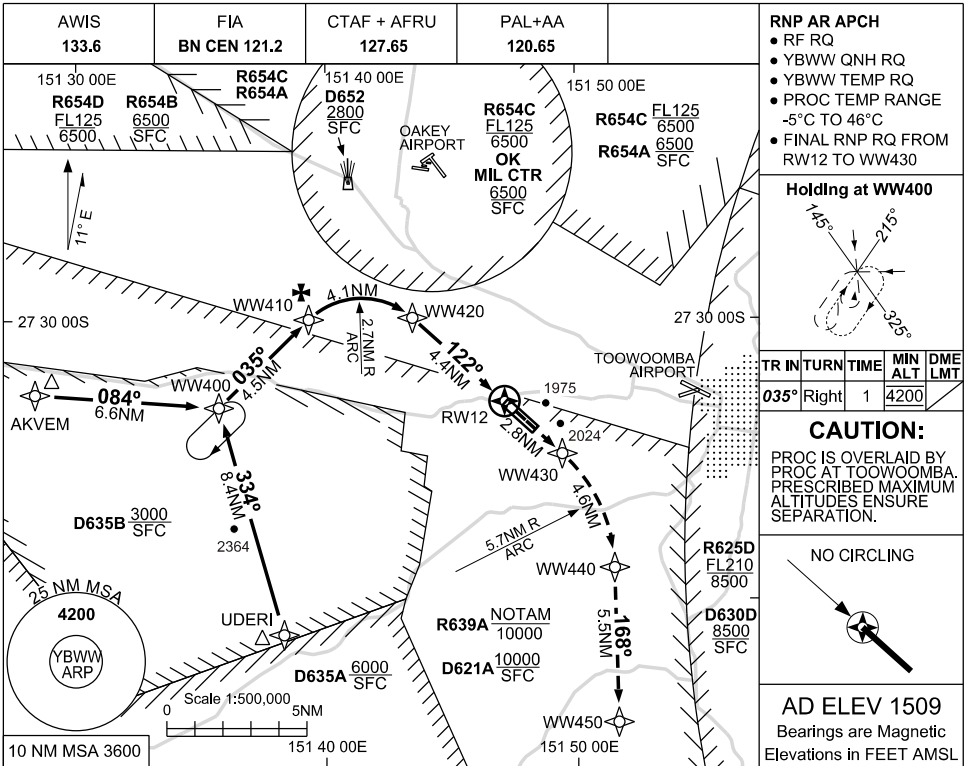
Changes: PROFILE DEPICTION, Editorial.

BWWGN03-174

FOR CASA APPROVED OPERATORS ONLY

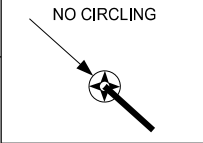
USE QNH  
RNP X RWY 12 (AR)  
BRISBANE WEST WELLCAMP, QLD (YBWW)

16 JUN 2022



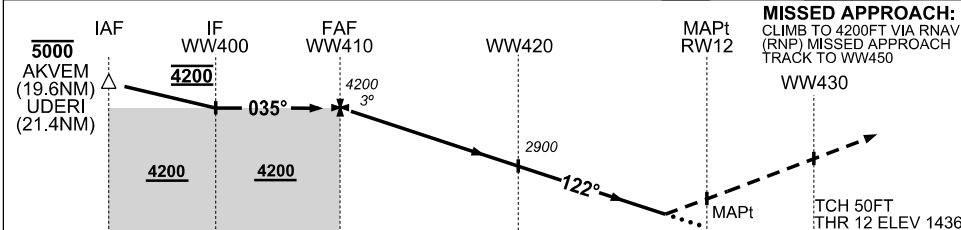
TR IN	TURN	TIME	MIN ALT	DME LMT
035°	Right	1	4200	

**CAUTION:**  
PROC IS OVERLAID BY PROC AT TOOWOOMBA. PRESCRIBED MAXIMUM ALTITUDES ENSURE SEPARATION.



**AD ELEV 1509**  
Bearings are Magnetic  
Elevations in FEET AMSL

NM TO NEXT WPT	WW410	3	2	1	WW420	4	3	2	1	RW12		
ALT (3° APCH PATH)	4200	3850	3530	3220	2900	2760	2440	2120	1820			



- NOTES**
1. MAX IAS:  
INITIAL UDERI : 220KT  
HOLDING WW400 : 200KT
  2. TRANSITION TO MISSED APPROACH RNP FOR LATERAL GUIDANCE MUST NOT BE INITIATED PRIOR TO THE ALONG-TRACK POSITION OF THE DA/H
  3. PAPI NOT COINCIDENT WITH VPA
  4. PRD OPR HR VIA NOTAM EXCEPT D652 : H24 D635AB: HJ

CATEGORY	A	B	C	D
RNP (0.3)		1920 (484 - 2.6)		
RNP (0.23)		1820 (384 - 2.2)		
CIRCLING	NOT AUTHORISED			
ALTERNATE	(1419 - 4.4)		(1609 - 6.0)	(1609 - 7.0)

Changes: R654ABCD, OK MIL CTR

BWWGN04-171