

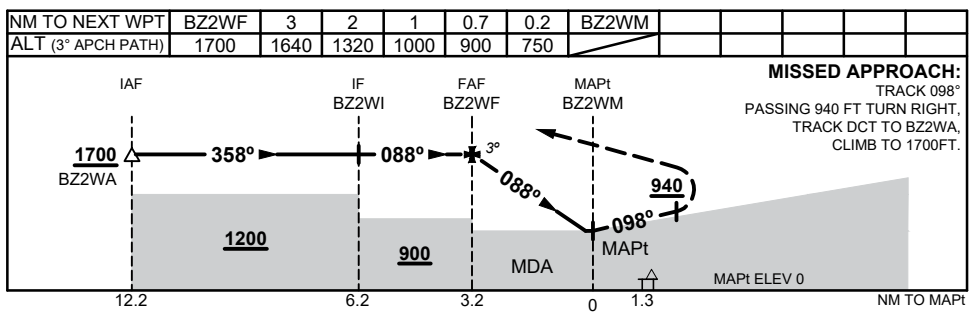
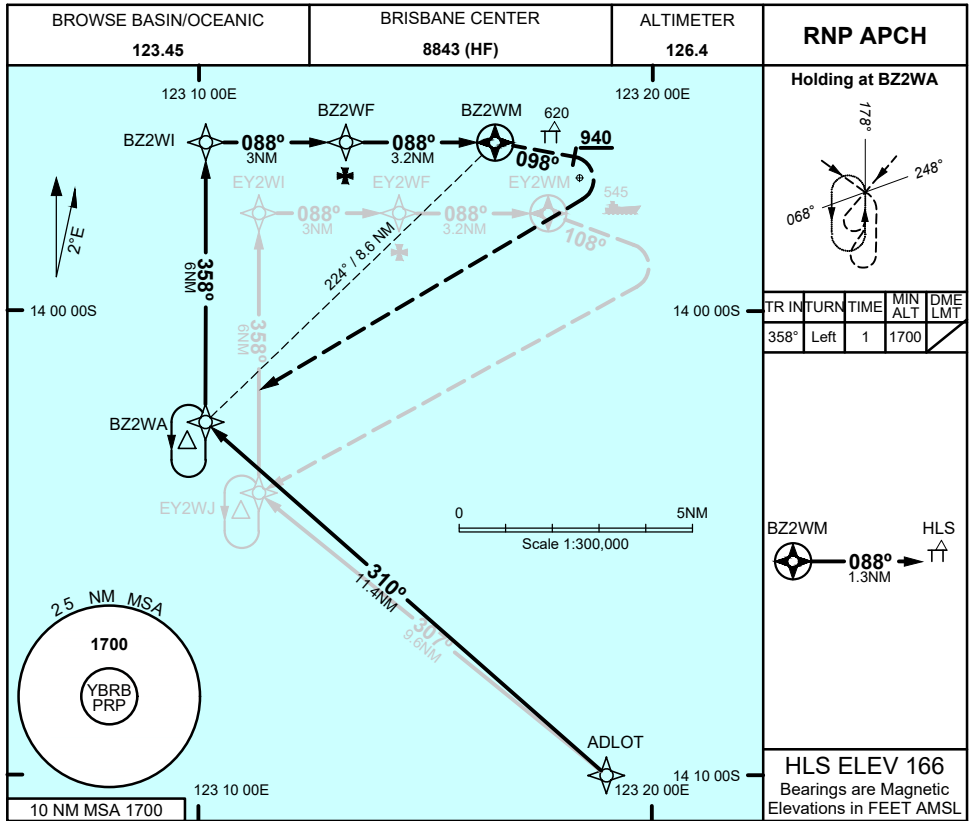
# FOR CASA APPROVED OPERATORS ONLY

## USE QNH

RNP Z 088

1 DEC 2022

### BROWSE BASIN, WA (YBRB)



CATEGORY	H
YBRB QNH (NON-VAA)	<b>750</b> (750 - 2.1)
AREA QNH (NON-VAA)	<b>900</b> (900 - 2.1)
ALTERNATE	(1400 - 4.1)

- NOTES**
1. MAX IAS:  
- HOLDING: 90 KT
  2. PRP (S13 57 09, E123 18 23)
  3. HLS (S13 56 23, E123 17 53)
  4. PRP EQUIVALENT TO  
ARP/HRP

Changes: LOGO, Editorial

BRBG01-173

# FOR CASA APPROVED OPERATORS ONLY

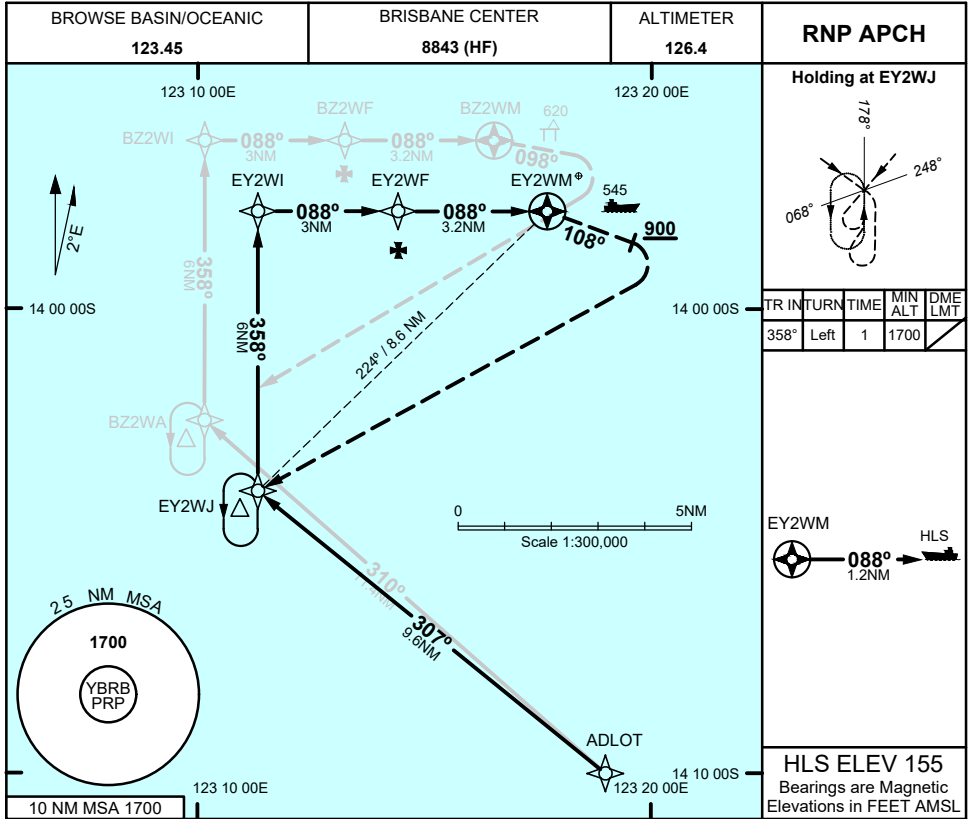
# FOR CASA APPROVED OPERATORS ONLY

USE QNH

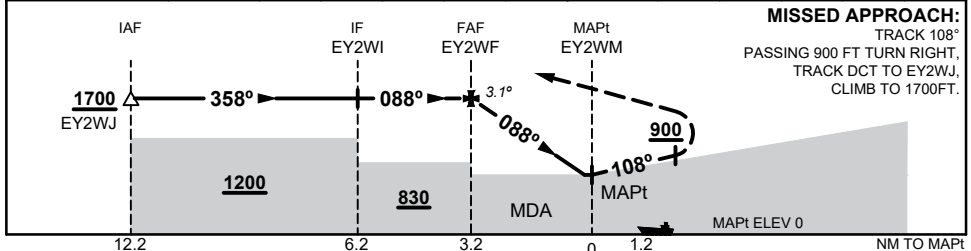
RNP Y 088

1 DEC 2022

**BROWSE BASIN, WA (YBRB)**



NM TO NEXT WPT	EY2WF	3	2	1	0.6	0.1	EY2WJ				
ALT (3.1° APCH PATH)	1700	1630	1310	980	830	680					



CATEGORY	H
YBRB QNH (NON-VAA)	<b>680</b> (680 - 2.1)
AREA QNH (NON-VAA)	<b>830</b> (830 - 2.1)
ALTERNATE	(1330 - 4.1)

- NOTES**
- MAX IAS:  
- HOLDING: 90 KT
  - PRP (S13 57 09, E123 18 23)
  - HLS (S13 57 54, E123 18 54)
  - PRP EQUIVALENT TO ARP/HRP

Changes: LOGO, Editorial

BRBG02-173

# FOR CASA APPROVED OPERATORS ONLY

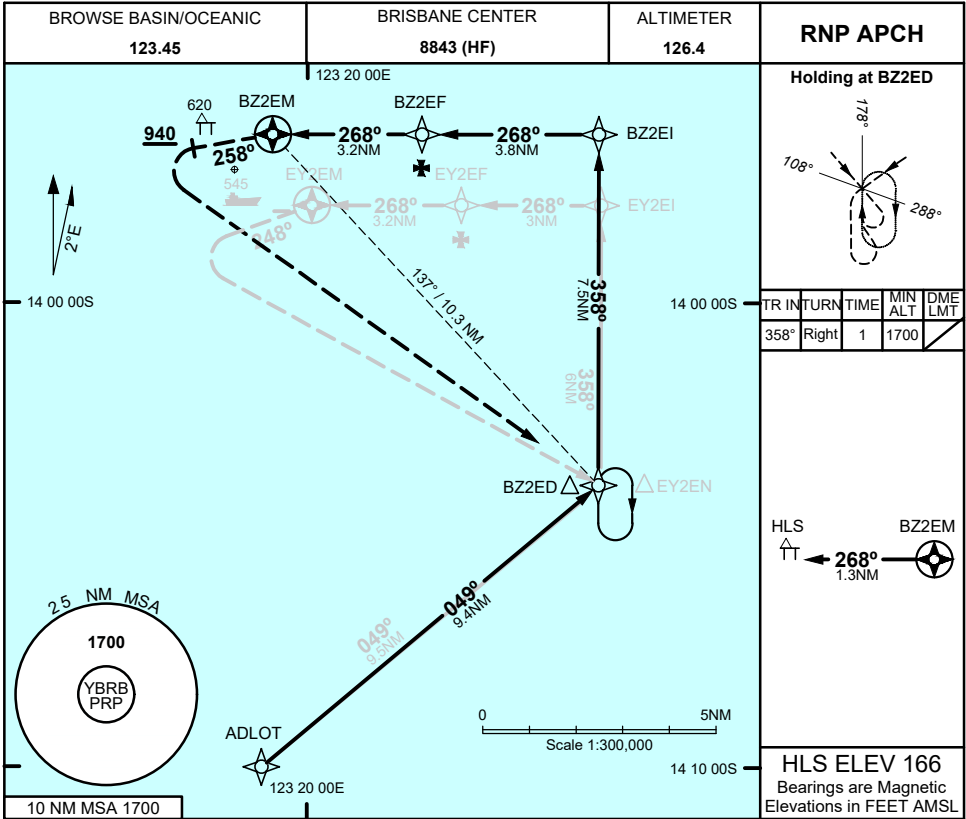
# FOR CASA APPROVED OPERATORS ONLY

## USE QNH

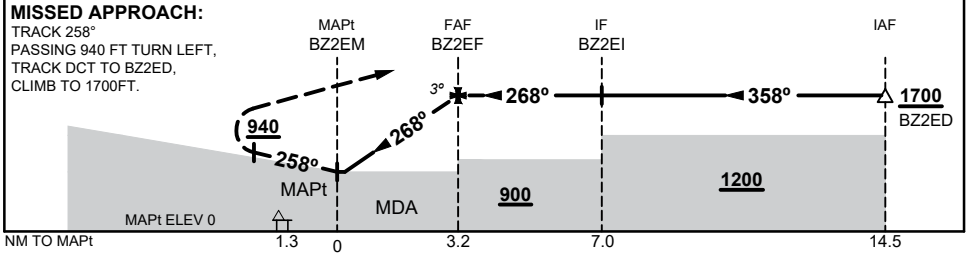
RNP Z 268

1 DEC 2022

**BROWSE BASIN, WA (YBRB)**



NM TO NEXT WPT	BZ2EM	0.2	0.7	1	2	3	BZ2EF				
ALT (3° APCH PATH)		750	900	1000	1320	1640	1700				



CATEGORY	H
YBRB QNH (NON-VAA)	<b>750</b> (750 - 2.1)
AREA QNH (NON-VAA)	<b>900</b> (900 - 2.1)
ALTERNATE	(1400 - 4.1)

- NOTES**
1. MAX IAS:  
- HOLDING: 90 KT
  2. PRP (S13 57 09, E123 18 23)
  3. HLS (S13 56 23, E123 17 53)
  4. PRP EQUIVALENT TO ARP/HRP

Changes: LOGO, Editorial

BRBG03-173

# FOR CASA APPROVED OPERATORS ONLY

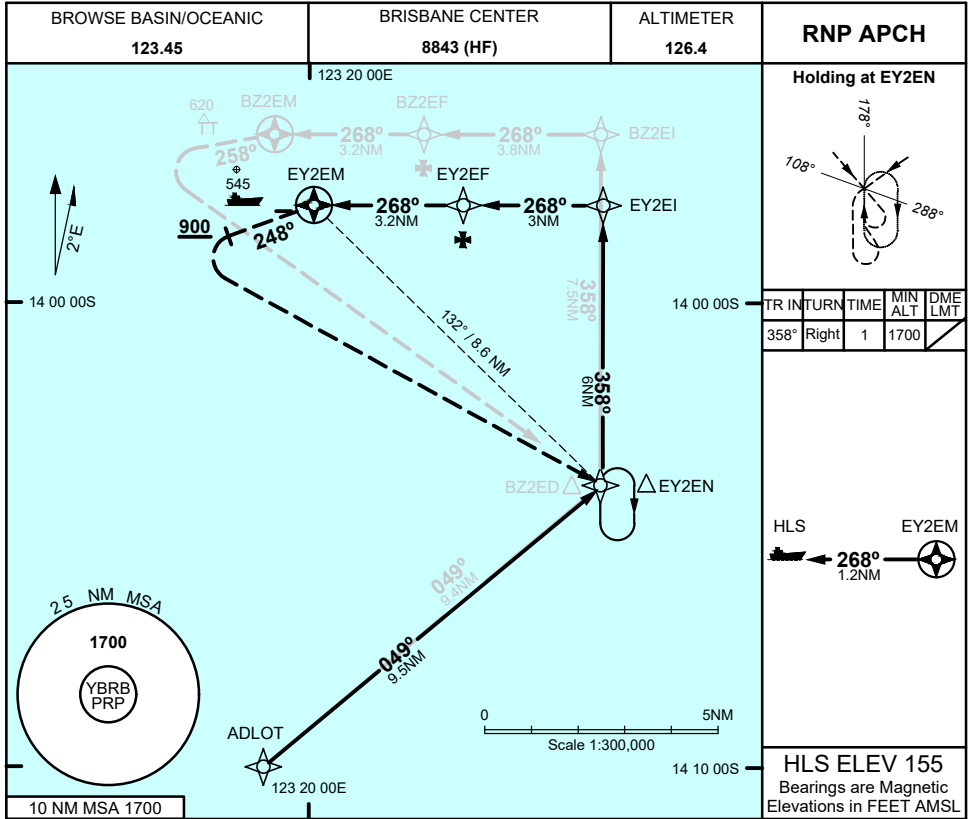
# FOR CASA APPROVED OPERATORS ONLY

## USE QNH

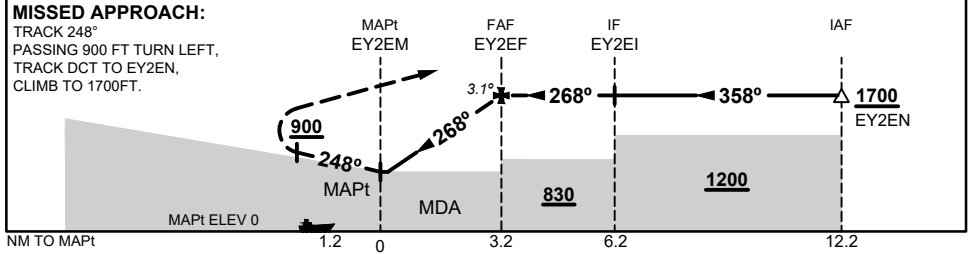
RNP Y 268

1 DEC 2022

**BROWSE BASIN, WA (YBRB)**



NM TO NEXT WPT	EY2EM	0.1	0.6	1	2	3	EY2EF			
ALT (3.1° APCH PATH)		680	830	980	1310	1630	1700			



CATEGORY	H
YBRB QNH (NON-VAA)	<b>680</b> (750 - 2.1)
AREA QNH (NON-VAA)	<b>830</b> (900 - 2.1)
ALTERNATE	(1400 - 4.1)

- NOTES**
1. MAX IAS:  
- HOLDING: 90 KT
  2. PRP (S13 57 09, E123 18 23)
  3. HLS (S13 57 54, E123 18 54)
  4. PRP EQUIVALENT TO ARP/HRP

Changes: LOGO, Editorial

BRBG04-173

# FOR CASA APPROVED OPERATORS ONLY