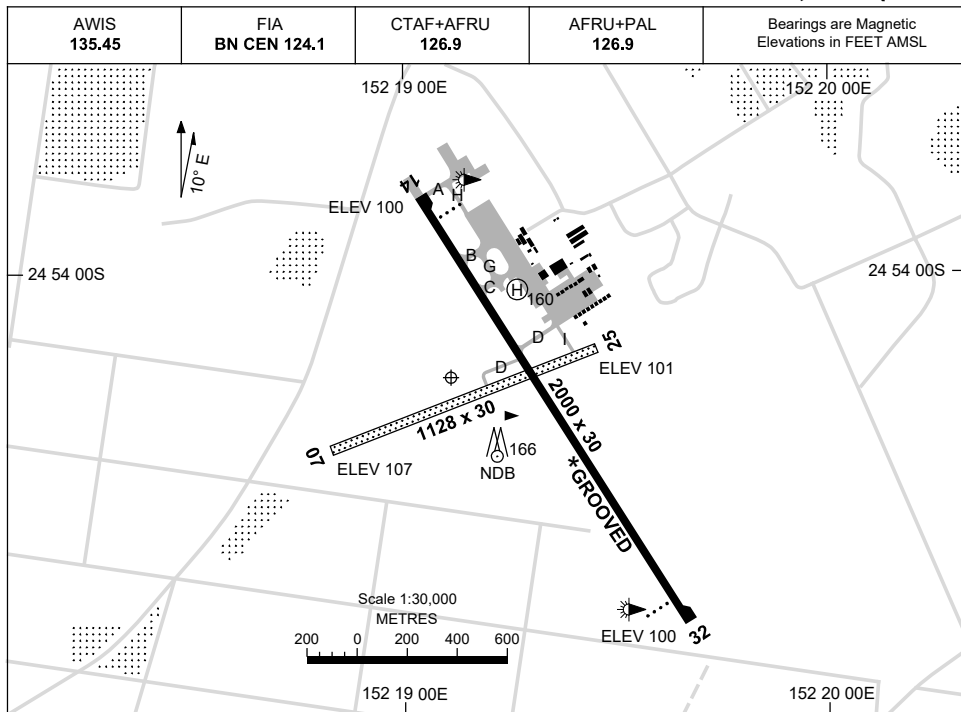


1 DEC 2022

AD ELEV 107  
24 54 14S 152 19 07E

AERODROME CHART  
**BUNDABERG, QLD (YBUD)**



RWY		AERODROME LIGHTING
		TAXIWAY : GREEN CENTRELINE RL : AFRU+PAL 126.9 , SDBY (15 SEC)
<b>14</b> <sup>138</sup>		PAPI 3.0° 55FT LIRL
<sup>318</sup> <b>32</b>		PAPI 3.0° 53FT LIRL
<b>07</b> <sup>059</sup>		NIL
<sup>239</sup> <b>25</b>		NIL

**NOTES**

1. RL AND TWY LGT AVBL HN ONLY.
2. GLIDER FLYING OPS FROM ELLIOTT FIELD 200°M/10NM. WINCH LAUNCH TO A030.
- \* 3. RWY GROOVED - 30M WIDE.

Changes: ABN DCMSD AND NOTES.

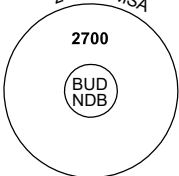
BUDAD01-173

# GNSS ARRIVAL PROCEDURES BUNDABERG, QLD (YBUD)

7 NOV 2019

AWIS <b>135.45</b>	FIA <b>BN CEN 124.1</b>	CTAF+AFRU <b>126.9</b>	AFRU+PAL <b>126.9</b>		Bearings are Magnetic Elevations in FEET AMSL
-----------------------	----------------------------	---------------------------	--------------------------	--	--

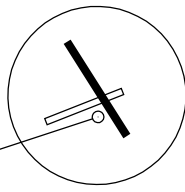
25 NM MSA



2700

BUD NDB

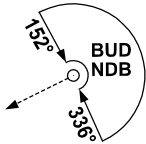
**REFERENCE WAYPOINT BUD NDB**

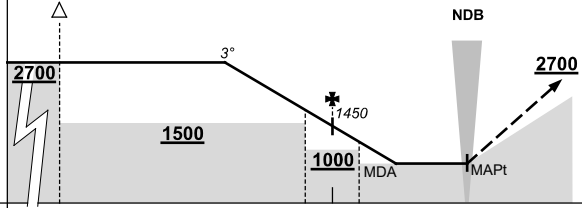


10 NM MSA 1600

AD ELEV 107

**SECTOR A**

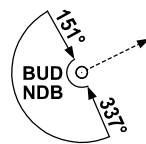


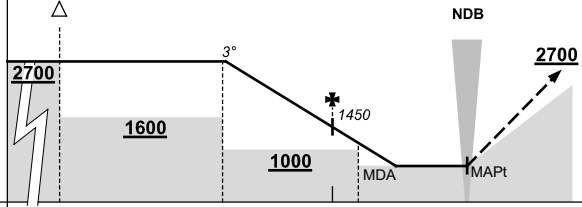


**MISSED APPROACH:**  
CLIMB ON TRACK  
TO 2700FT.

NM TO BUD NDB	25	15																		
<b>CIRCLING MINIMA</b>				A,B: 700-2.4		C: 830-4.0		D: N/A												
NM TO BUD NDB	9	8	7	6	5	4	3.1	2.7												
ALT (3° APCH PATH)	2700	2400	2080	1760	1450	1130	830	700												

**SECTOR B**





**MISSED APPROACH:**  
CLIMB ON TRACK  
TO 2700FT.

NM TO BUD NDB	25	15																		
<b>CIRCLING MINIMA</b>				A,B: 800-2.4		C: 830-4.0		D: N/A												
NM TO BUD NDB	9	8	7	6	5	4	3.1	3												
ALT (3° APCH PATH)	2700	2400	2080	1760	1450	1130	830	800												

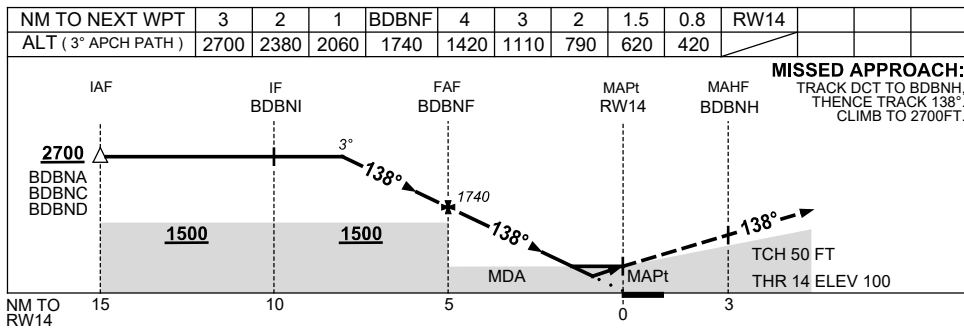
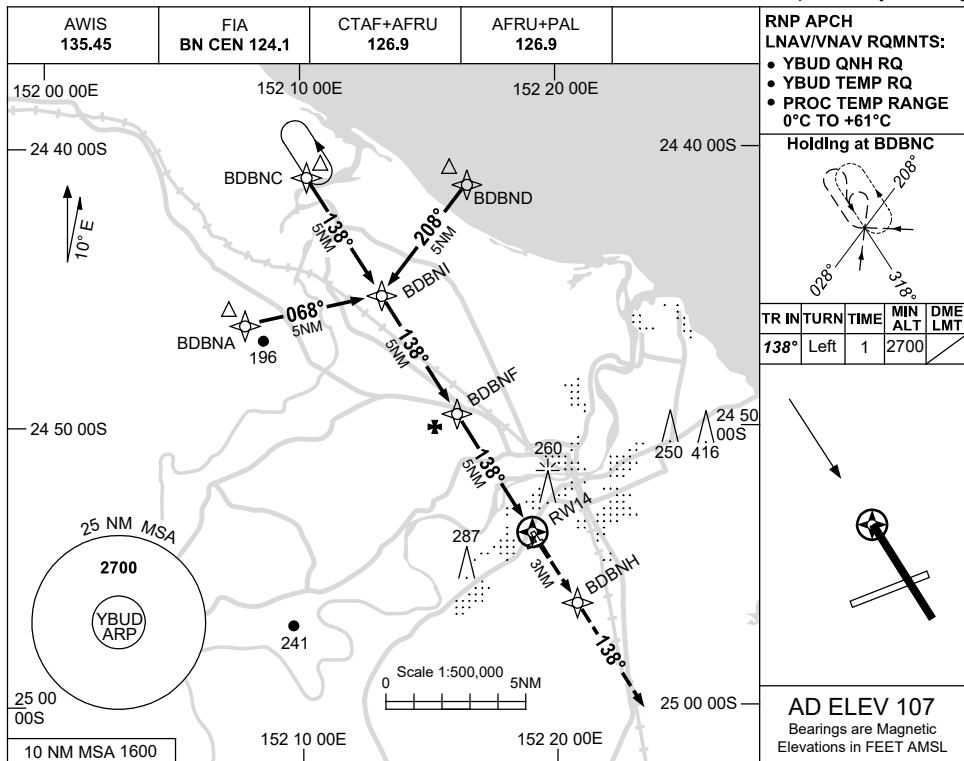
Changes: Editorial.

USE QNH

RNP RWY 14

24 MAR 2022

BUNDBERG, QLD (YBUD)



**NOTES**

CATEGORY	A	B	C	D
LNAV/VNAV		420 (320-1.8)		NOT APPLICABLE
LNAV		620 (513-2.9)		
CIRCLING	700 (593-2.4)		830 (723-4.0)	
ALTERNATE	(1093-4.4)		(1223-6.0)	

1. MAX IAS:  
INITIAL : 210KT.

Changes: CHART TITLE, PBN SPECIFICATION BOX.

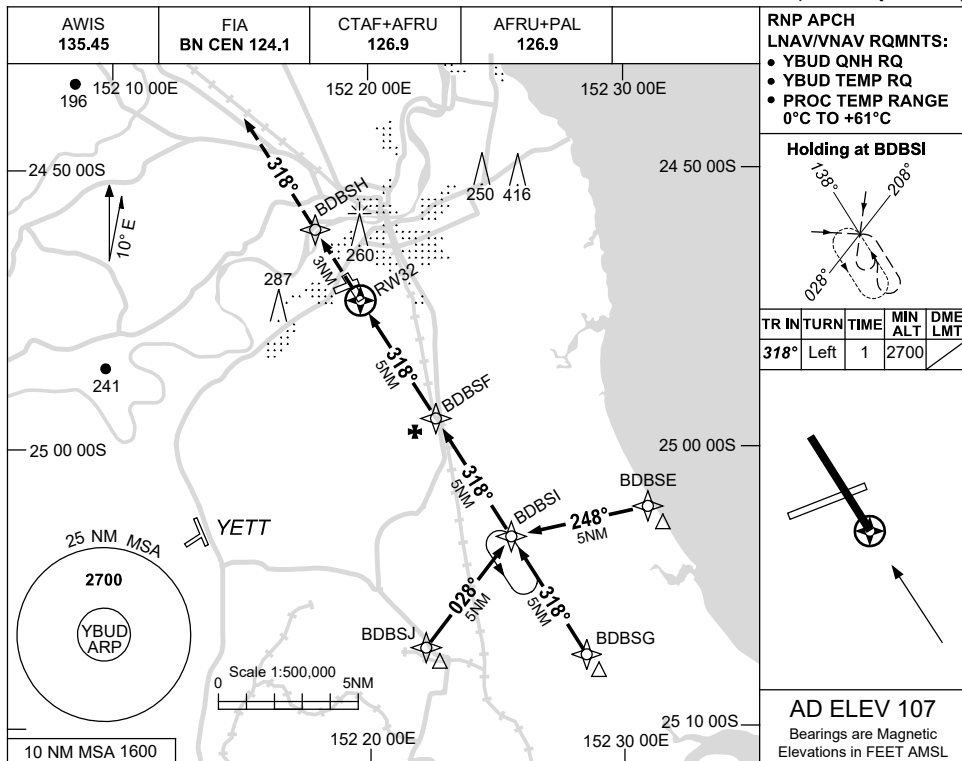
BUDGN01-170

USE QNH

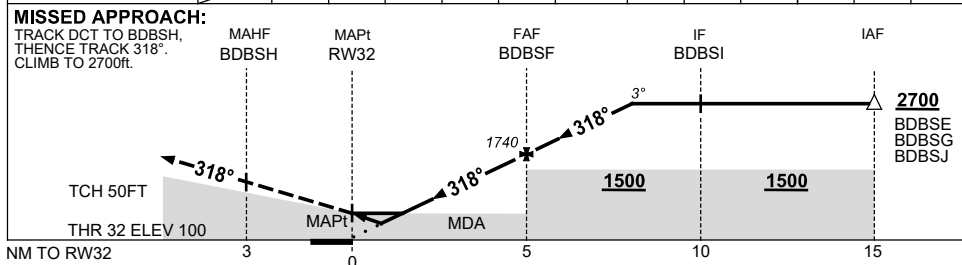
RNP RWY 32

21 MAR 2024

**BUNDBERG, QLD (YBUD)**



NM TO NEXT WPT	RW32	0.8	1.5	2	3	4	BDBSF	1	2	3		
ALT (3° APCH PATH)		420	620	790	1110	1420	1740	2060	2380	2700		



**NOTES**

CATEGORY	A	B	C	D
LNAV/VNAV	420 (320-1.8)			<b>NOT APPLICABLE</b>
LNAV	620 (513-2.9)			
CIRCLING	700 (593-2.4)		830 (723-4.0)	
ALTERNATE	(1093-4.4)		(1223-6.0)	

1. MAX IAS:  
INITIAL : 210KT.  
HOLDING: 200KT.

Changes: GLIDING SYMBOL REMOVED, Editorial.

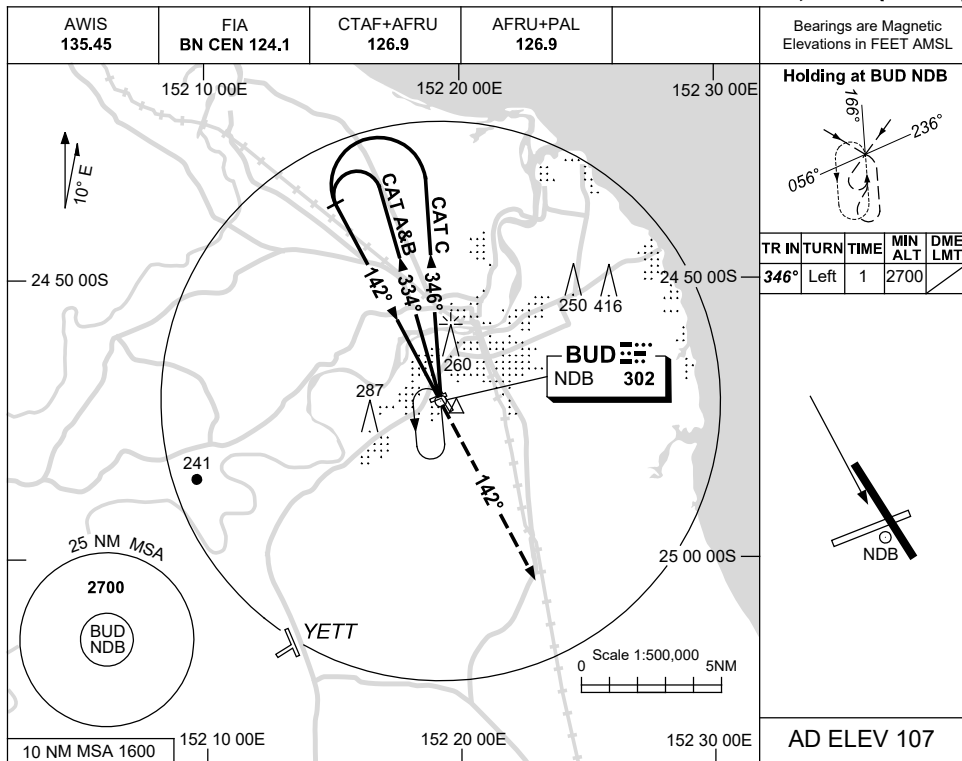
BUDGN02-178

USE QNH

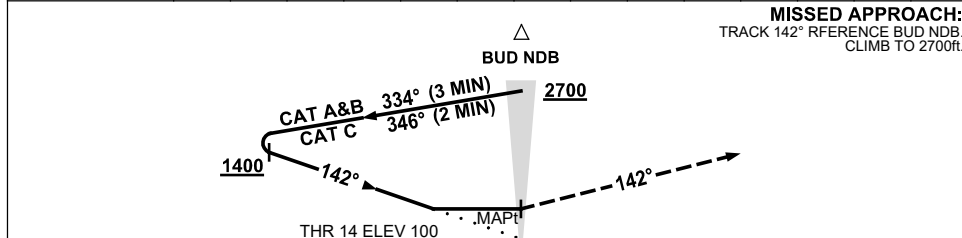
NDB RWY 14

21 MAR 2024

**BUNDABERG, QLD (YBUD)**



DME DIST	NOT APPLICABLE									
ALT										



**NOTES**

- MAX IAS:  
INITIAL : 210KT.

CATEGORY	A	B	C	D
S-I NDB	<b>660 (553-3.1)</b>			NOT APPLICABLE
CIRCLING	<b>700 (593-2.4)</b>	<b>830 (723-4.0)</b>		
ALTERNATE	<b>(1093-4.4)</b>	<b>(1223-6.0)</b>		

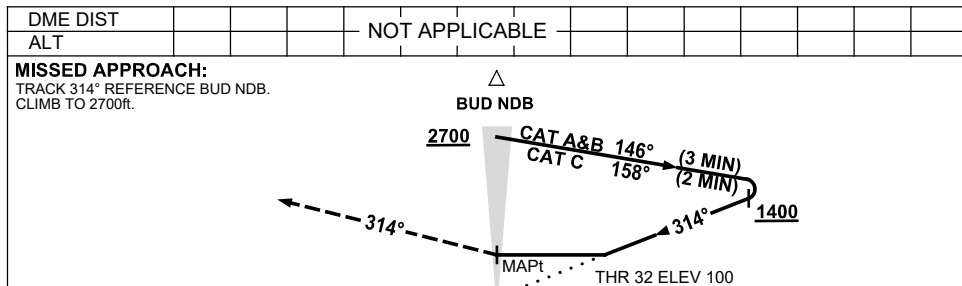
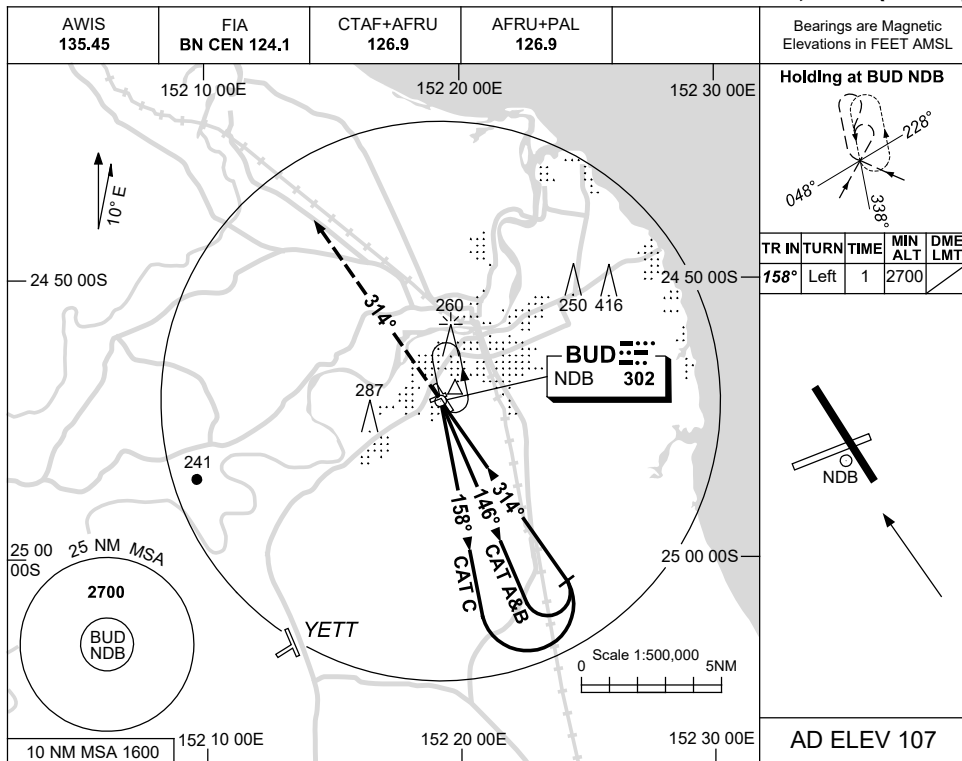
Changes: GLIDING SYMBOL REMOVED, Editorial.

BUDNB01-178

USE QNH

NDB RWY 32  
**BUNDABERG, QLD (YBUD)**

21 MAR 2024



**NOTES**

1. MAX IAS:  
 INITIAL : 210KT.

CATEGORY	A	B	C	D
S-I NDB	<b>660</b> (553-3.1)			NOT APPLICABLE
CIRCLING	<b>700</b> (593-2.4)	<b>830</b> (723-4.0)		
ALTERNATE	(1093-4.4)		(1223-6.0)	

Changes: GLIDING SYMBOL REMOVED, Editorial.

BUDNB02-178