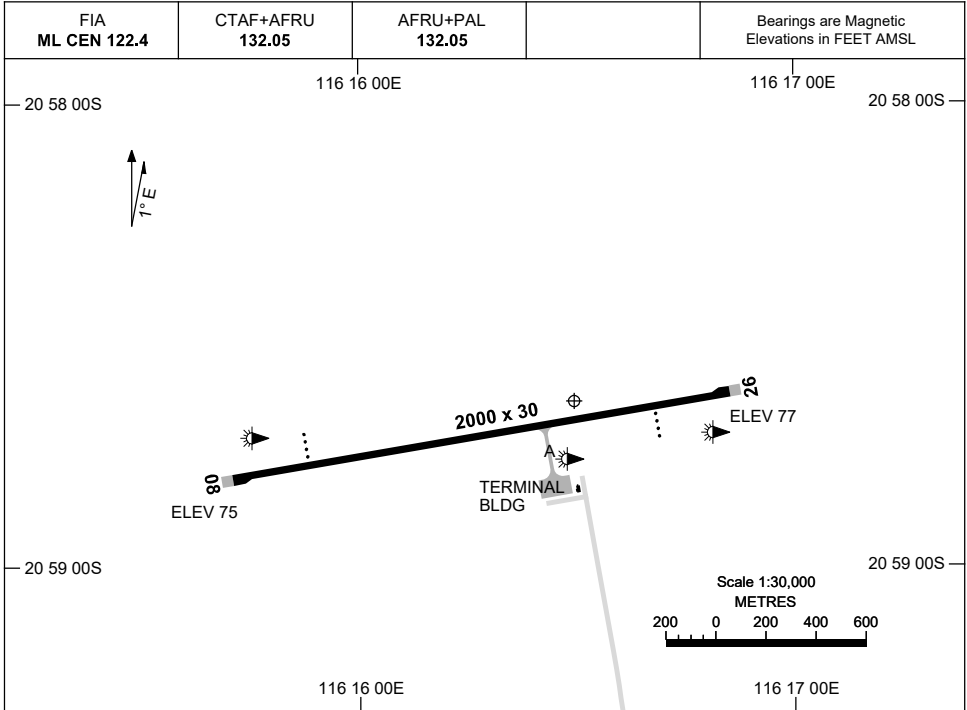


15 JUN 2023

AD ELEV 77
20 58 38S 116 16 30E

AERODROME CHART
CAPE PRESTON, WA (YCPR)



	AERODROME LIGHTING
RWY	TAXIWAY : BLUE EDGE RL : AFRU+PAL 132.05
08 <small>079</small>	PAPI 3.0° 48.5FT LIRL
<small>259</small> 26	PAPI 3.0° 48.5FT LIRL

NOTES

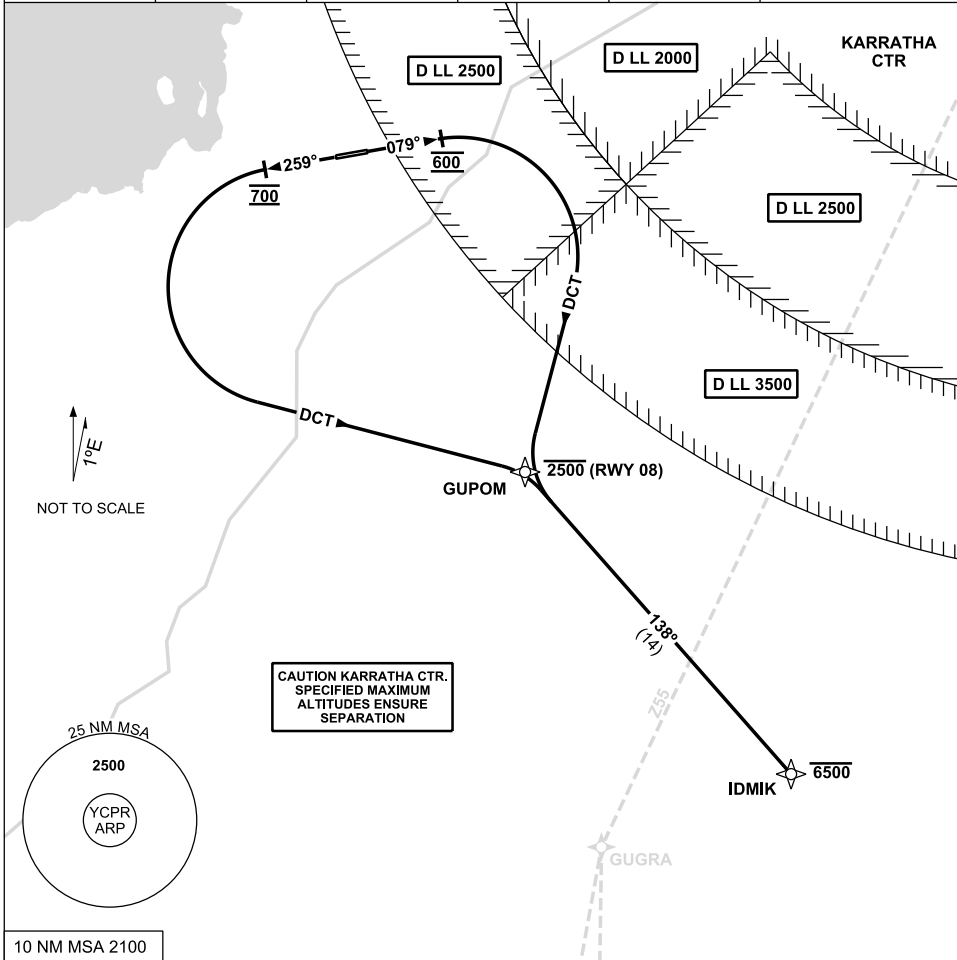
Changes: TERMINAL BLDG AND NOTES.

CPRAD01-175

STANDARD INSTRUMENT DEPARTURE (SID)
 IDMIK ONE DEPARTURE (RNAV) - RWY 08 & 26
CAPE PRESTON, WA (YCPR)

13 JUN 2024

FIA ML CEN 122.4	CTAF+AFRU 132.05	AFRU+PAL 132.05		Bearings are Magnetic Elevations in FEET AMSL
---------------------	---------------------	--------------------	--	--



IDMIK ONE DEPARTURE (RNAV)

RWY 08

- Track 079°
- **AT 600FT** turn **RIGHT** track DCT to GUPOM
Cross GUPOM AT or BLW 2500FT
- Track 138° to IDMIK
Cross IDMIK AT or BLW 6500FT
- Intercept flight planned route

RWY 26

- Track 259°
- **AT 700FT** turn **LEFT** track DCT to GUPOM
- Track 138° to IDMIK
Cross IDMIK AT or BLW 6500FT
- Intercept flight planned route

Changes: WPT VETEL renamed GUGRA

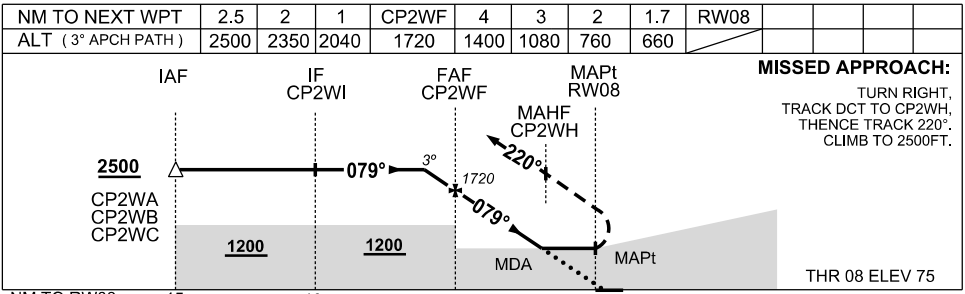
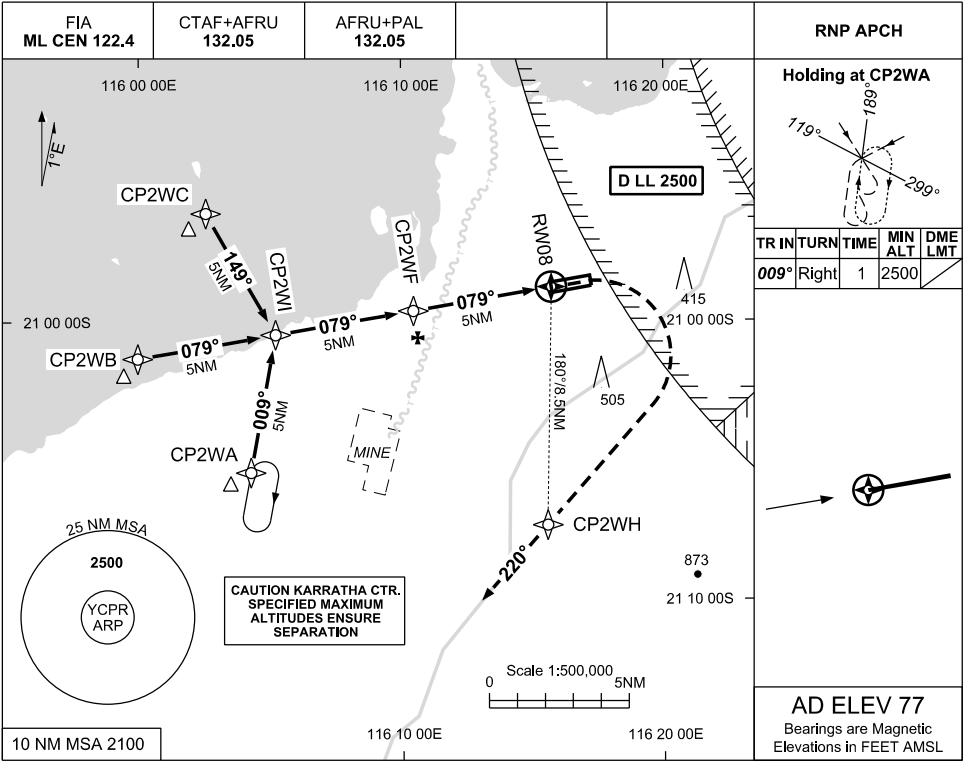
CPRDP01-179

USE QNH

RNP RWY 08

30 NOV 2023

CAPE PRESTON, WA (YCPR)



NOTES

- MAX IAS : INITIAL: 210KT MAP TURN: 210KT

CATEGORY	A	B	C	D
LNAV	660 (583-3.2)			NOT AUTHORISED
CIRCLING	850 (773-2.4)	1050(973-4.0)		
ALTERNATE	(1273-4.4)		(1473-6.0)	

Changes: CHART TITLE, WPT IDENT, EDITORIAL

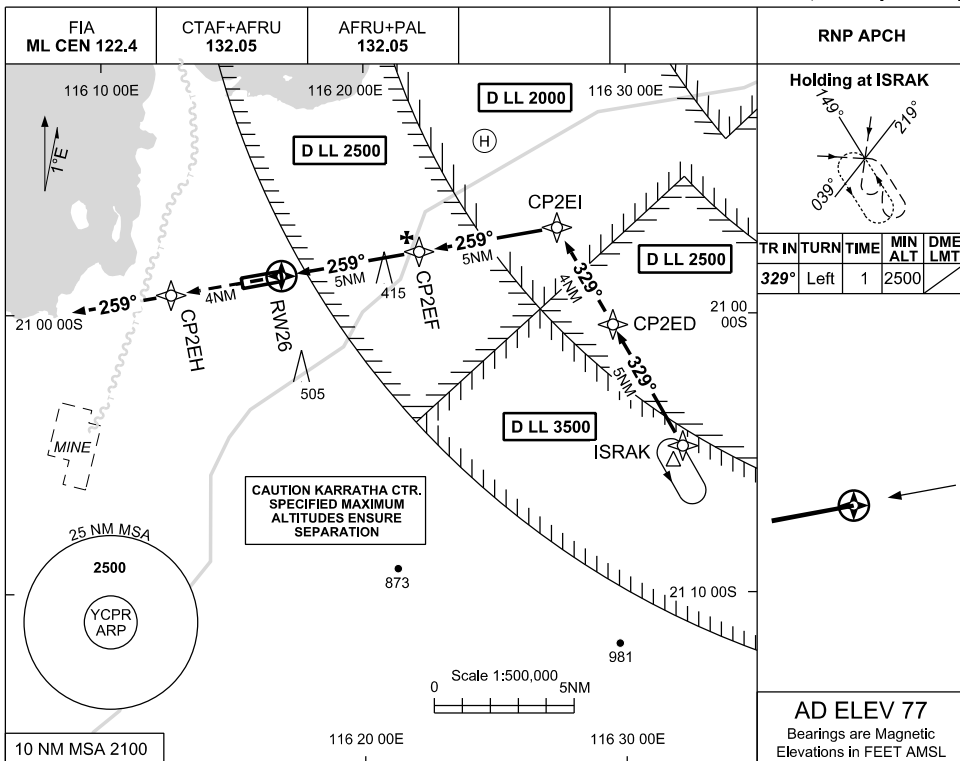
CPRGN01-177

USE QNH

RNP RWY 26

30 NOV 2023

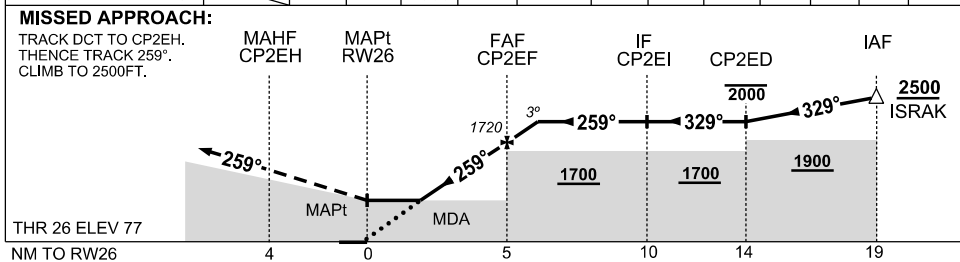
CAPE PRESTON, WA (YCPR)



TR	INTURN	TIME	MIN ALT	DME LMT
329°	Left	1	2500	

AD ELEV 77
Bearings are Magnetic
Elevations in FEET AMSL

NM TO NEXT WPT	RW26	1.5	2	3	4	CP2EF	0.9				
ALT (3° APCH PATH)		610	760	1080	1400	1720	2000				



NOTES

- MAX IAS :
INITIAL: 210KT
HOLDING: 210KT
- PROC OVERLAID BY KARRATHA CLASS D AIRSPACE . CLR RQ TO ENTER CTA
- HEL OPS 9NM ENE ARP (DEVILS CREEK)

CATEGORY	A	B	C	D
LNAV	610 (533-2.8)			NOT AUTHORISED
CIRCLING	850 (773-2.4)		1050(973-4.0)	
ALTERNATE	(1273-4.4)		(1473-6.0)	

Changes: CHART TITLE, WPT IDENT, EDITORIAL

CPRGN02-177

