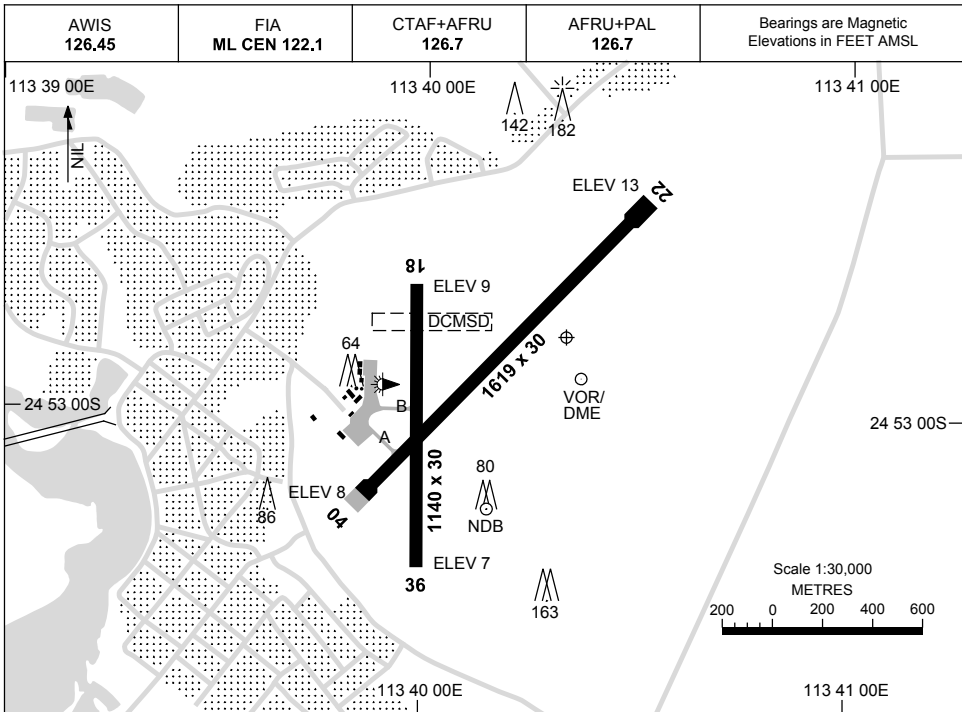


23 MAR 2023

AD ELEV 13
24 52 50S 113 40 20E

AERODROME CHART
CARNARVON, WA (YCAR)



AERODROME LIGHTING	
RWY	TAXIWAY : BLUE EDGE RL : AFRU+PAL 126.7 , SDBY (10 SEC)
04 <small>044</small>	LIRL
<small>224</small> 22	LIRL
18 <small>180</small>	NIL
<small>360</small> 36	NIL

NOTES

Changes: RWY 04/22 IWI DCMSD, THR 04 ELEV, RWY 04/22 MAG BRG.

CARAD01-174

DME or GNSS ARRIVAL PROCEDURES CARNARVON, WA (YCAR)

17 JUN 2021

AWIS 126.45	FIA ML CEN 122.1	CTAF+AFRU 126.7	AFRU+PAL 126.7		Bearings are Magnetic Elevations in FEET AMSL
----------------	---------------------	--------------------	-------------------	--	--

**DME USING CAR DME
REFERENCE WAYPOINT CAR VOR**

* NO CIRCLING IN SECTOR EAST OF RWY 22 & RWY 36 BEYOND 2.5NM.

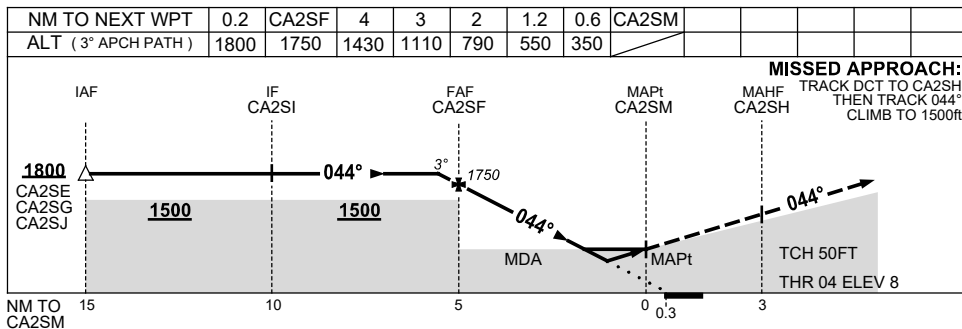
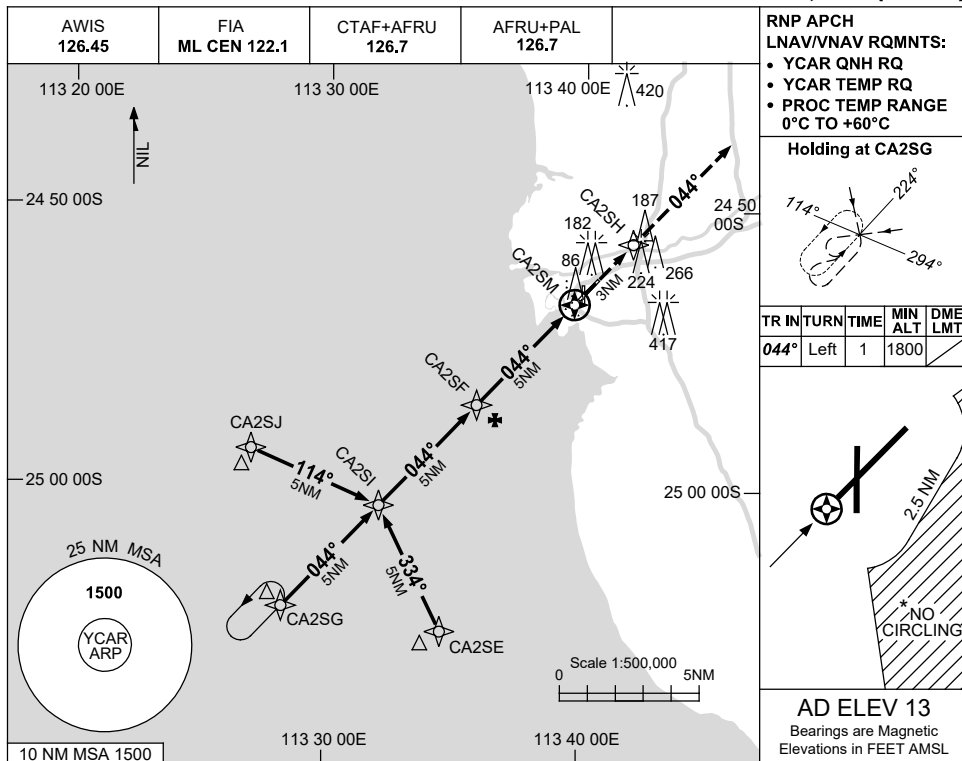
ALL ROUTES TO CAR VOR or NDB	△	VOR or NDB					MISSED APPROACH: CLIMB ON TRACK TO 1500FT.	
	*							
NM TO CAR VOR	25	15	5	4	0			
CIRCLING MINIMA				A,B: 830-2.4	C: 830-4.0	D: 830-5.0		
NM TO CAR VOR	4	3	2	1.9				
ALT (3° APCH PATH)	1500	1180	860	830				

USE QNH

RNP RWY 04

21 MAR 2024

CARNARVON, WA (YCAR)



NOTES

CATEGORY	A	B	C	D
LNAV/VNAV		350 (342-1.9)		
LNAV		550 (537-3.0)		
CIRCLING *	670 (657-2.4)	760 (747-4.0)	810 (797-5.0)	
ALTERNATE	(1157-4.4)		(1297-7.0)	

- MAX IAS: INITIAL : 210KT.
- NO CIRCLING IN SECTOR EAST OF RWY 22 & RWY 36 BEYOND 2.5NM.

Changes: CIRCLING MINIMA, 420FT TOWER, 266FT TOWER.

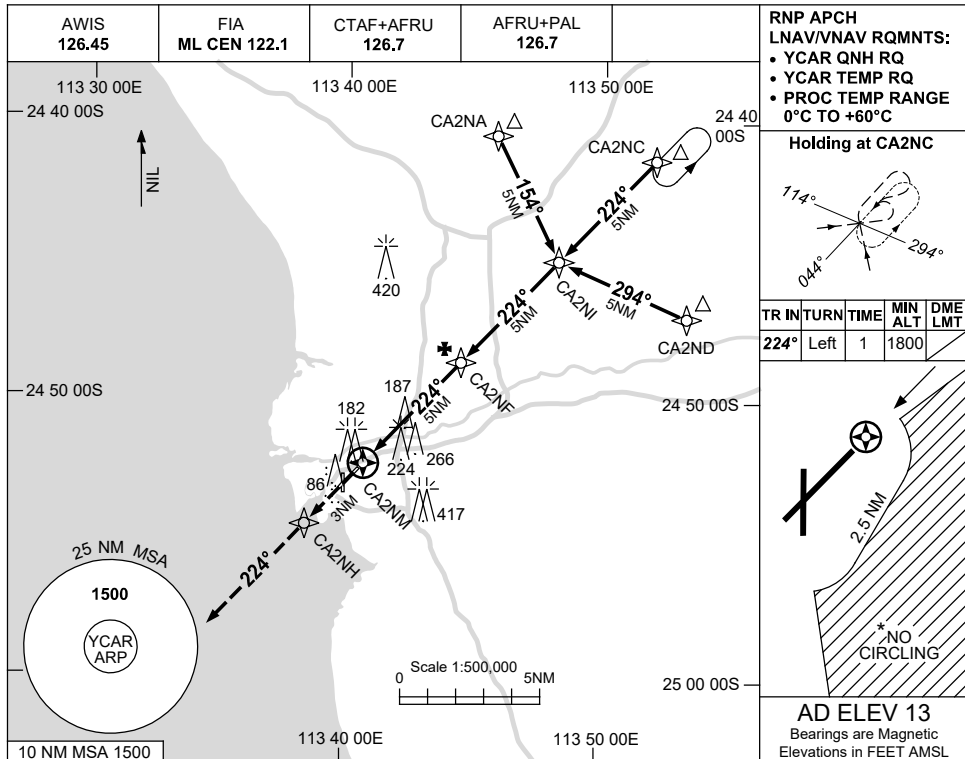
CARGN01-178

USE QNH

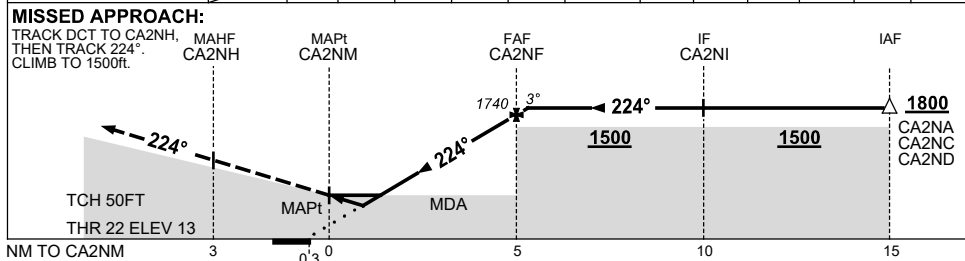
RNP RWY 22

21 MAR 2024

CARNARVON, WA (YCAR)



NM TO NEXT WPT	CA2NM	0.6	1.2	2	3	4	CA2NF	0.2			
ALT (3° APCH PATH)		350	540	790	1100	1420	1740	1800			



NOTES

CATEGORY	A	B	C	D
LNAV/VNAV		350 (337-1.9)		
LNAV		540 (527-3.0)		
CIRCLING *	670 (657-2.4)	760 (747-4.0)	810 (797-5.0)	
ALTERNATE	(1157-4.4)	(1247-6.0)	(1297-7.0)	

1. MAX IAS:
INITIAL : 210KT.
- * 2. NO CIRCLING IN SECTOR EAST OF RWY 22 & RWY 36 BEYOND 2.5NM.

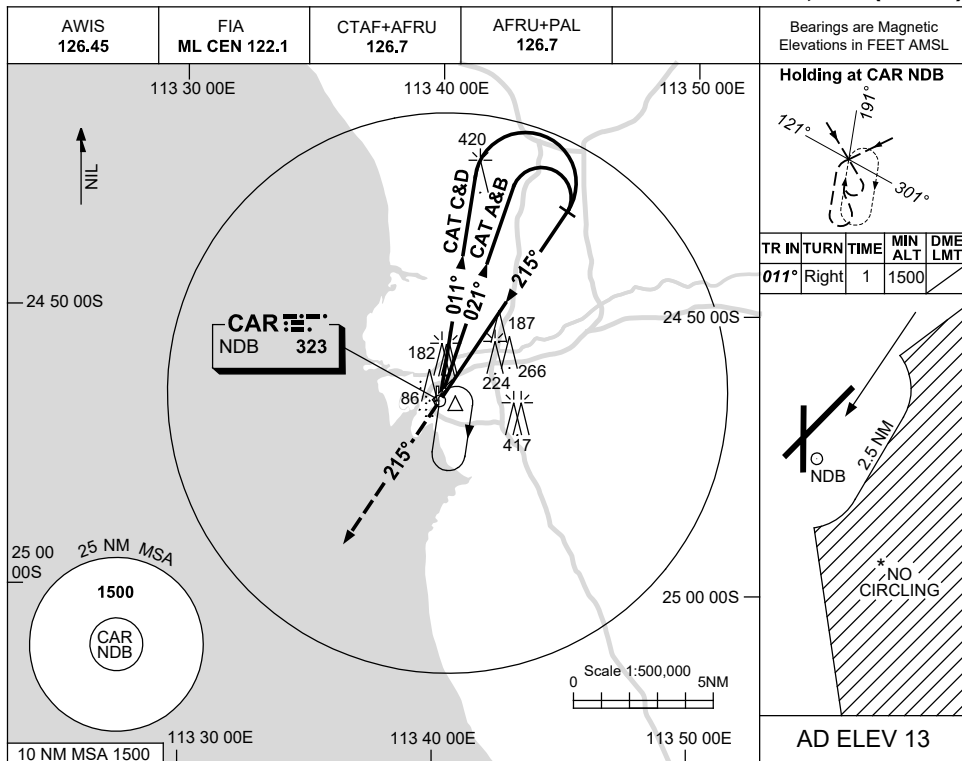
Changes: CIRCLING MINIMA, 420FT TOWER, 266FT TOWER.

CARGN02-178

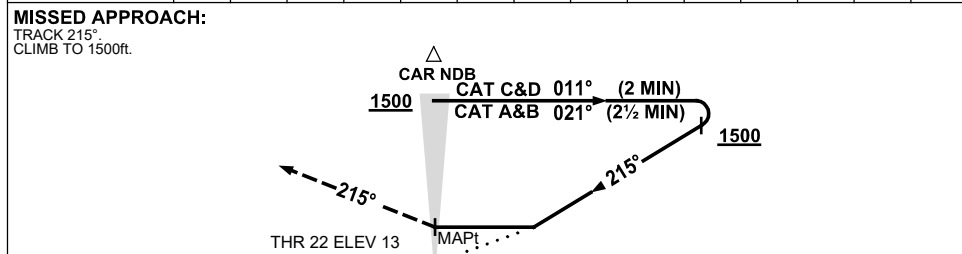
USE QNH

NDB RWY 22
CARNARVON, WA (YCAR)

21 MAR 2024



DME DIST	NOT APPLICABLE									
ALT										



NOTES

1. MAX IAS: INITIAL : 210KT.
- * 2. NO CIRCLING IN SECTOR EAST OF RWY 22 & RWY 36 BEYOND 2.5NM.

CATEGORY	A	B	C	D
S-I NDB	650 (637-3.6)			
CIRCLING *	670 (657-2.4)	760 (747-4.0)	810 (797-5.0)	
ALTERNATE	(1157-4.4)		(1297-7.0)	

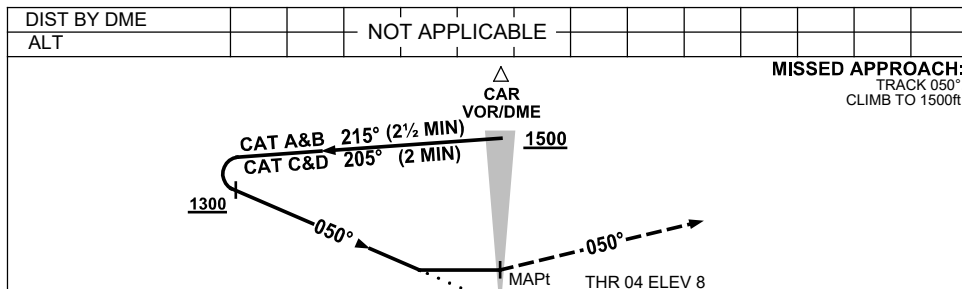
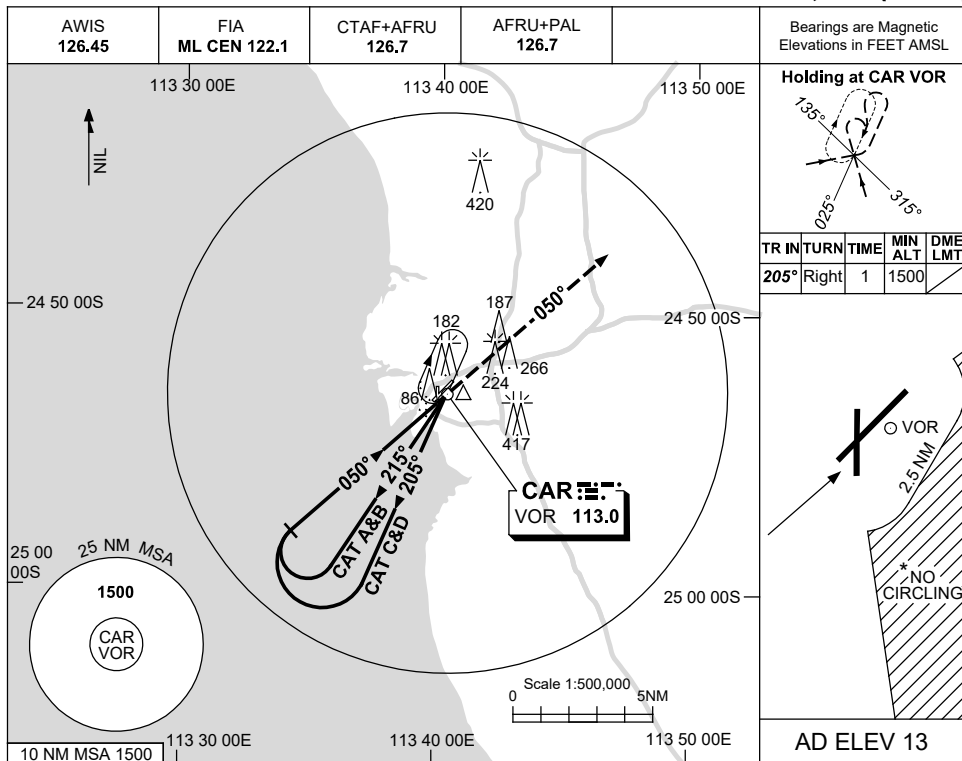
Changes: CIRCLING MINIMA, REVERSAL ALT, 420FT TOWER, 266FT TOWER.

CARNB01-178

USE QNH

VOR-Y RWY 04
CARNARVON, WA (YCAR)

21 MAR 2024



NM TO CAR DME

NOTES

CATEGORY	A	B	C	D
S-I VOR	600 (587-3.3)			
CIRCLING *	670 (657-2.4)	760 (747-4.0)	810 (797-5.0)	
ALTERNATE	(1157-4.4)	(1247-6.0)	(1297-7.0)	

1. MAX IAS:
INITIAL : 210KT.
- * 2. NO CIRCLING IN
SECTOR EAST OF
RWY 22 & RWY 36
BEYOND 2.5NM.

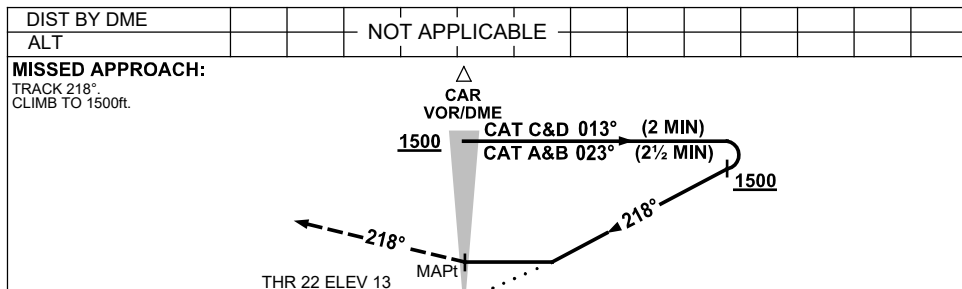
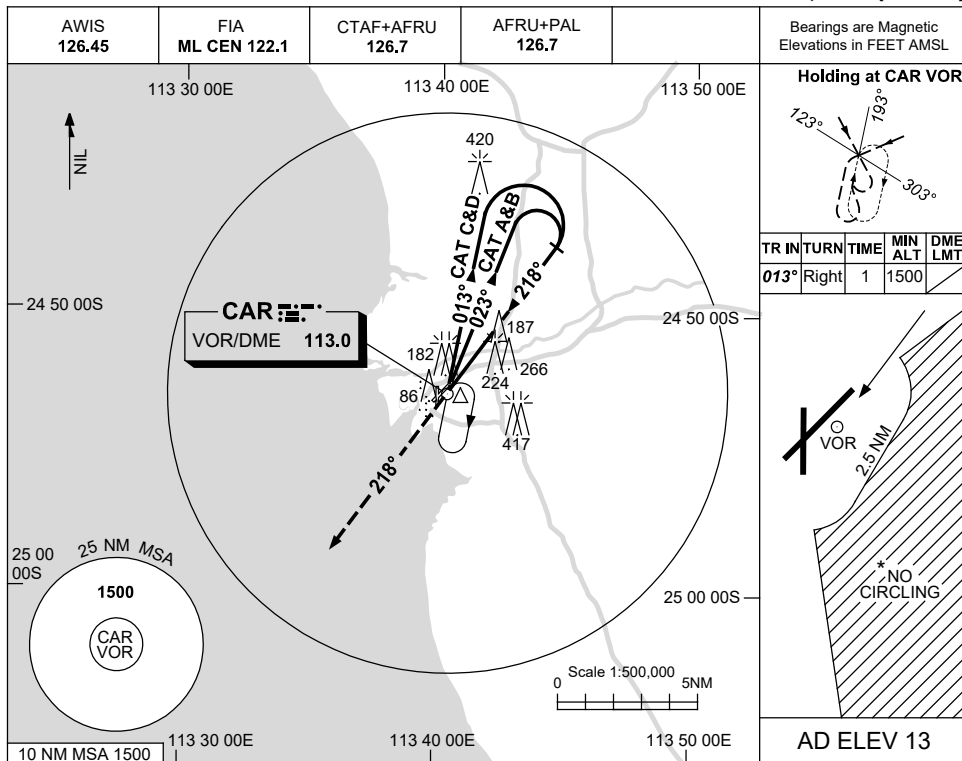
Changes: CIRCLING MINIMA, 420FT TOWER, 266FT TOWER.

CARVO01-178

USE QNH

VOR-Y RWY 22
CARNARVON, WA (YCAR)

21 MAR 2024



NOTES

CATEGORY	A	B	C	D
S-I VOR	630 (617-3.5)			
CIRCLING*	670 (657-2.4)	760 (747-4.0)	810 (797-5.0)	
ALTERNATE	(1157-4.4)	(1247-6.0)	(1297-7.0)	

1. MAX IAS: INITIAL : 210KT.
- * 2. NO CIRCLING IN SECTOR EAST OF RWY 22 & RWY 36 BEYOND 2.5NM.

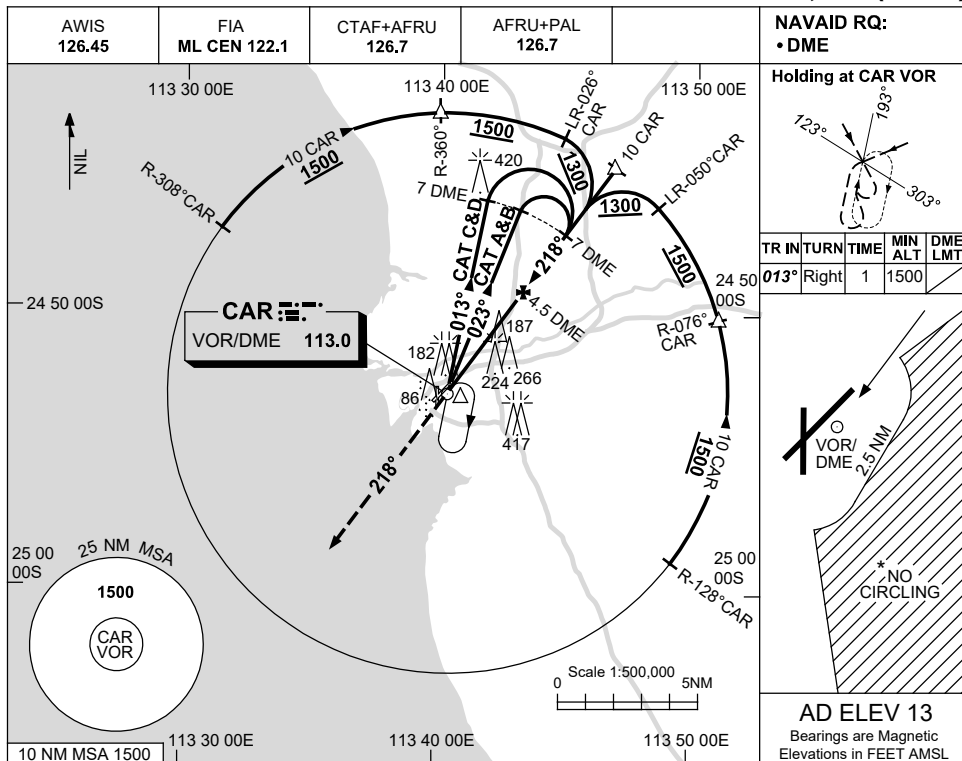
Changes: CIRCLING MINIMA, REVERSAL ALT, 420FT TOWER, 266FT TOWER.

CARVO02-178

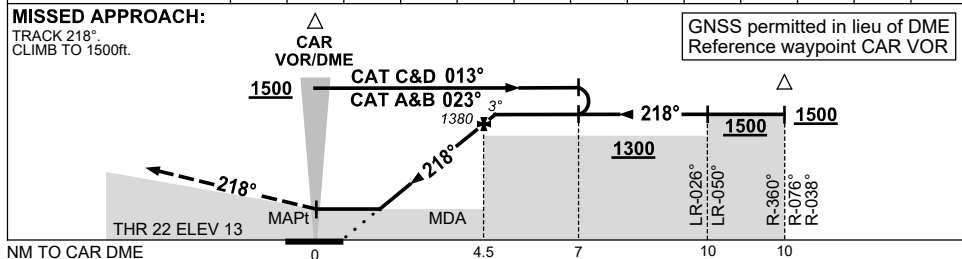
USE QNH

VOR-Z RWY 22
CARNARVON, WA (YCAR)

21 MAR 2024



DIST TO CAR DME	2	3	4	4.9				
ALT (3° APCH PATH)	580	900	1220	1500				



NOTES

CATEGORY	A	B	C	D
S-I VOR/DME	580 (567-3.2)			
CIRCLING*	670 (657-2.4)	760 (747-4.0)	810 (797-5.0)	
ALTERNATE	(1157-4.4)	(1247-6.0)	(1297-7.0)	

- MAX IAS: INITIAL : 210KT.
- * NO CIRCLING IN SECTOR EAST OF RWY 22 & RWY 36 BEYOND 2.5NM.

Changes: CIRCLING MINIMA, 420FT TOWER, 266FT TOWER.

CARV004-178