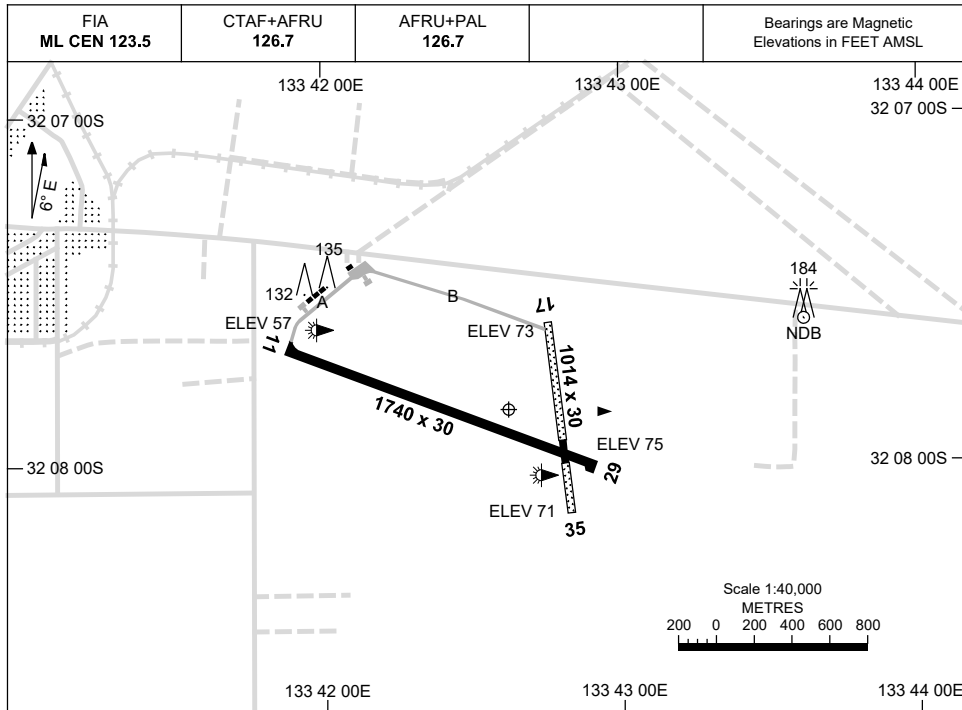


30 NOV 2023

AD ELEV 77  
32 07 50S 133 42 35E

AERODROME CHART  
**CEDUNA, SA (YCDU)**



	<b>AERODROME LIGHTING</b>	
<b>RWY</b>	TAXIWAY : BLUE EDGE (TWY A ONLY) RL : AFRU+PAL 126.7 , SDBY (15 SEC) , PTBL (EMERG ONLY, 90 MIN PN)	
<b>11</b> <sup>105</sup>	LIRL PTBL	
285 <b>29</b>	LIRL PTBL	
<b>17</b> <sup>168</sup>	PTBL	
348 <b>35</b>	PTBL	

**NOTES**

1. AWIS (PHONE) 08 8150 3801

Changes: AFRU+PAL

CDUAD01-177

# GNSS ARRIVAL PROCEDURES CEDUNA, SA (YCDU)

21 MAR 2024

FIA ML CEN 123.5	CTAF+AFRU 126.7	AFRU+PAL 126.7		Bearings are Magnetic Elevations in FEET AMSL
---------------------	--------------------	-------------------	--	--

25 NM MSA  
1800  
CDU NDB  
10 NM MSA 1800

**REFERENCE WAYPOINT CDU NDB**  
AWIS (PHONE) 08 8150 3801

CDU NDB 293

AD ELEV 77

**SECTOR A**

NDB  
1800  
3°  
1560  
1000  
MDA  
MAPt  
170°  
1800

**MISSED APPROACH:**  
TURN LEFT,  
TRACK 170°. CLIMB TO 1800FT.

NM TO CDU NDB	25	15	9	5	0														
<b>CIRCLING MINIMA</b>				<b>A,B: 850-2.4</b>	<b>C: 940-4.0</b>	<b>D: N/A</b>													
NM TO CDU NDB	5.8	5	4	3.1	3.0	2.9	2.8												
ALT (3° APCH PATH)	1800	1560	1240	940	920	900	850												

**SECTOR B**

NDB  
1800  
3°  
1500  
1000  
MDA  
MAPt  
050°  
1800

**MISSED APPROACH:**  
TRACK 050°. CLIMB TO 1800FT.

NM TO CDU NDB	25	15	10	5	0														
<b>CIRCLING MINIMA</b>				<b>A,B: 780-2.4</b>	<b>C: 940-4.0</b>	<b>D: N/A</b>													
NM TO CDU NDB	6	5	4	3.3	3	2.8													
ALT (3° APCH PATH)	1800	1500	1170	940	850	780													

**SECTOR C**

NDB  
1800  
1700  
3°  
1550  
1000  
MDA  
MAPt  
170°  
1800

**MISSED APPROACH:**  
TRACK 170°. CLIMB TO 1800FT.

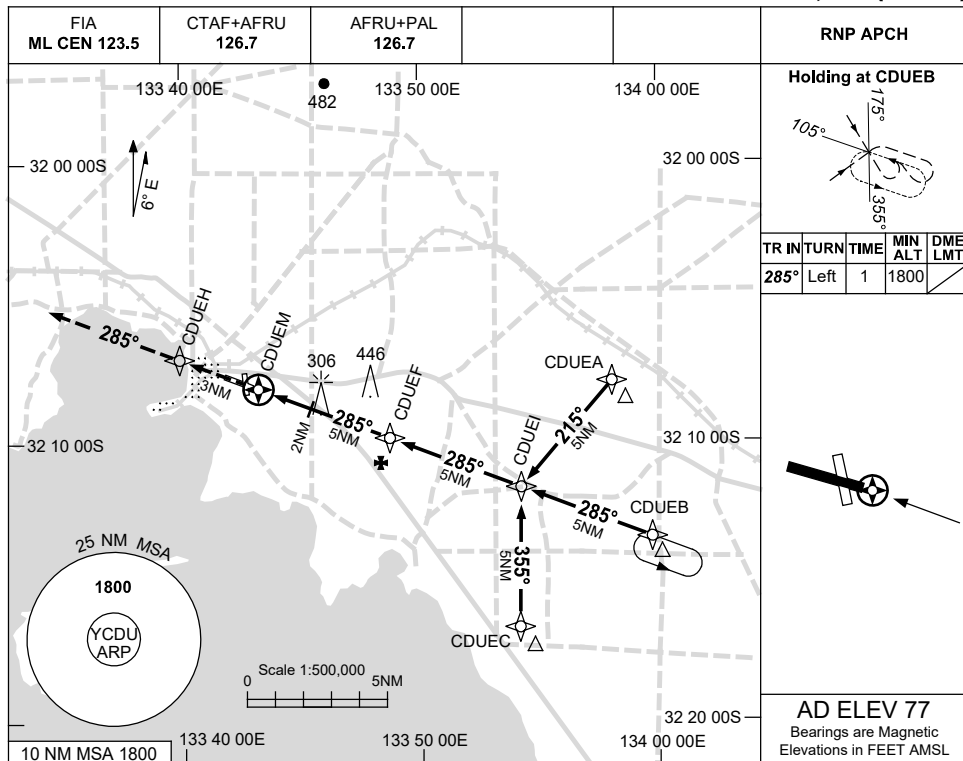
NM TO CDU NDB	25	15	8	6	5	0													
<b>CIRCLING MINIMA</b>				<b>A,B: 800-2.4</b>	<b>C: 940-4.0</b>	<b>D: N/A</b>													
NM TO CDU NDB	5.8	5	4	3.1	3	2.7													
ALT (3° APCH PATH)	1800	1550	1230	940	900	800													

Changes: SECT B CAT A, B, SECT C 6NM TO 5NM SEGMENT MINIMUM ALT, SECT BOUNDARIES. CDUDG01-178

USE QNH

RNP RWY 29  
CEDUNA, SA (YCDU)

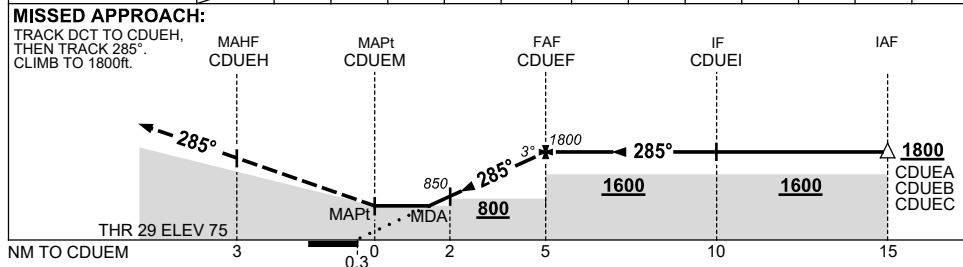
21 MAR 2024



AD ELEV 77

Bearings are Magnetic  
Elevations in FEET AMSL

NM TO NEXT WPT	CDUEM	1.5	2	3	4	CDUEF			
ALT (3° APCH PATH)		680	850	1170	1490	1800			



**NOTES**

CATEGORY	A	B	C	D
LNAV	680 (603-3.4)			NOT APPLICABLE
CIRCLING	710 (633-2.4)	940 (863-4.0)		
ALTERNATE	(1133-4.4)		(1363-6.0)	

- MAX IAS: INITIAL : 210KT.
- AWIS (PHONE) 08 8150 3801.

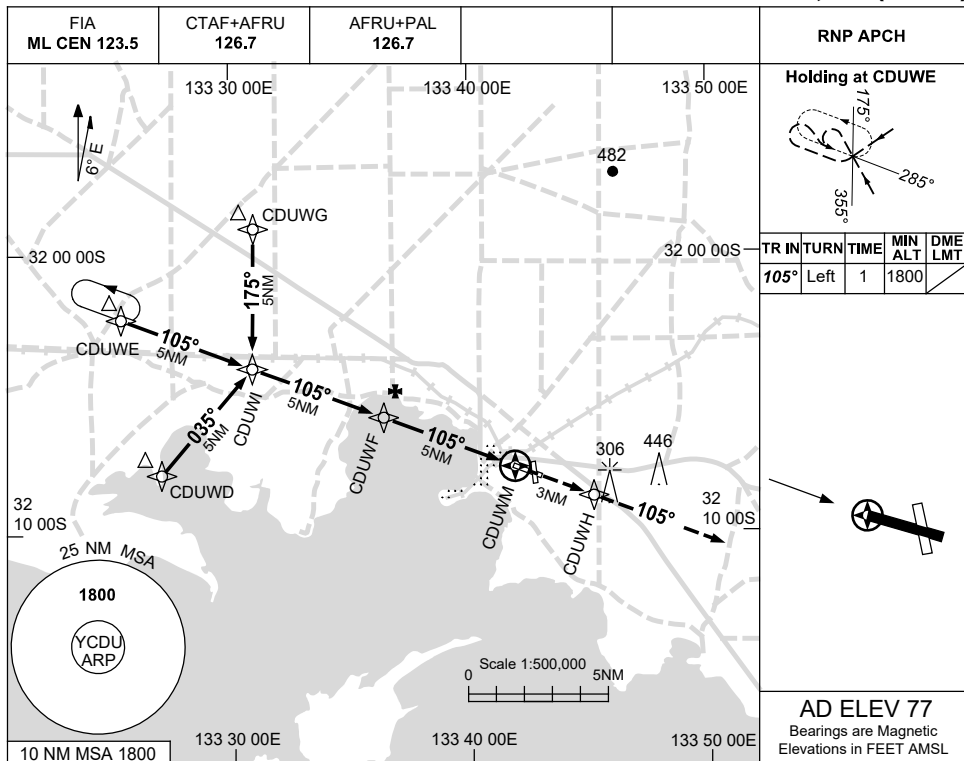
Changes: Editorial.

CDUGN01-178

USE QNH

RNP RWY 11  
CEDUNA, SA (YCDU)

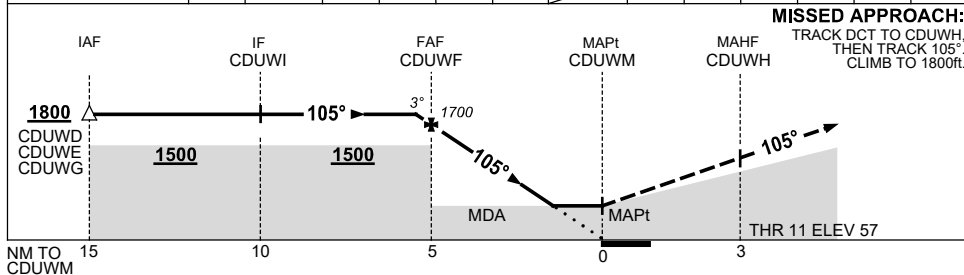
21 MAR 2024



AD ELEV 77

Bearings are Magnetic  
Elevations in FEET AMSL

NM TO NEXT WPT	0.3	CDUWF	4	3	2	1.6	CDUWM				
ALT (3° APCH PATH)	1800	1700	1380	1060	740	610					



NOTES

CATEGORY	A	B	C	D
LNAV	610 (553-3.1)			NOT APPLICABLE
CIRCLING	710 (633-2.4)	940 (863-4.0)		
ALTERNATE	(1133-4.4)	(1363-6.0)		

- MAX IAS:  
INITIAL : 210KT.
- AWIS (PHONE)  
08 8150 3801.

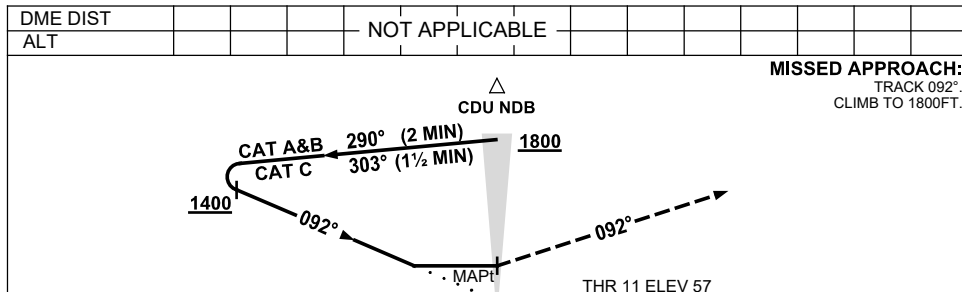
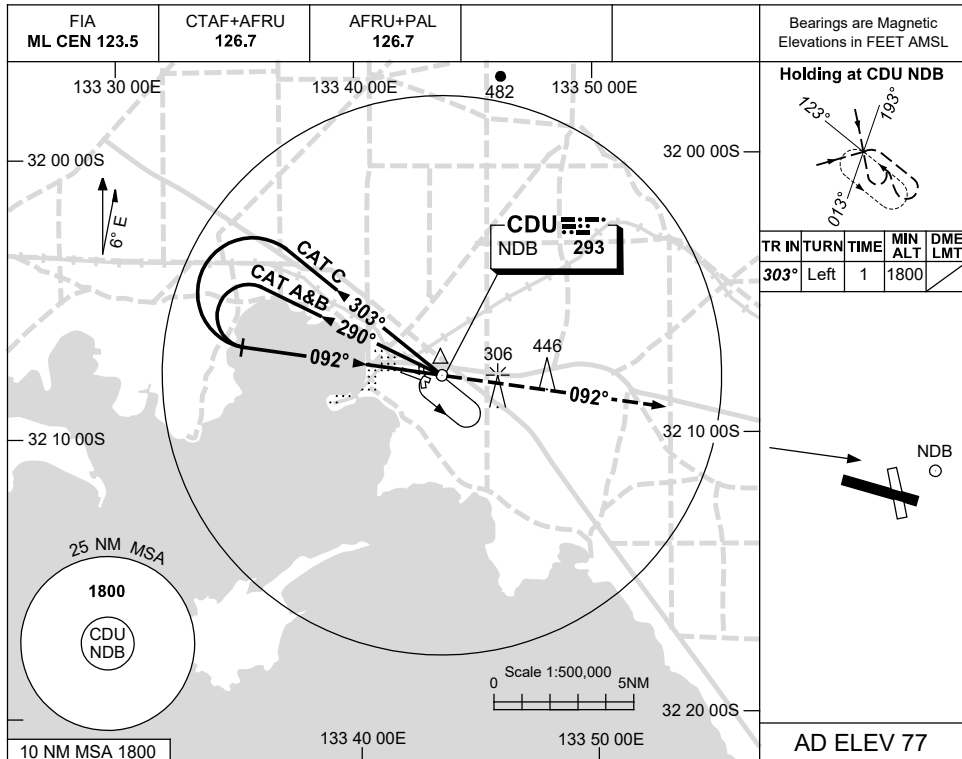
Changes: Editorial.

CDUGN02-178

USE QNH

NDB RWY 11  
**CEDUNA, SA (YCDU)**

30 NOV 2023



**NOTES**

CATEGORY	A	B	C	D
S-I NDB	660 (603-3.4)			NOT APPLICABLE
CIRCLING	710 (633-2.4)	940 (863-4.0)		
ALTERNATE	(1133-4.4)		(1363-6.0)	

1. MAX IAS:  
INITIAL : 210KT.
2. AWIS (PHONE)  
08 8150 3801

Changes: AFRU+PAL.

CDUNB01-177