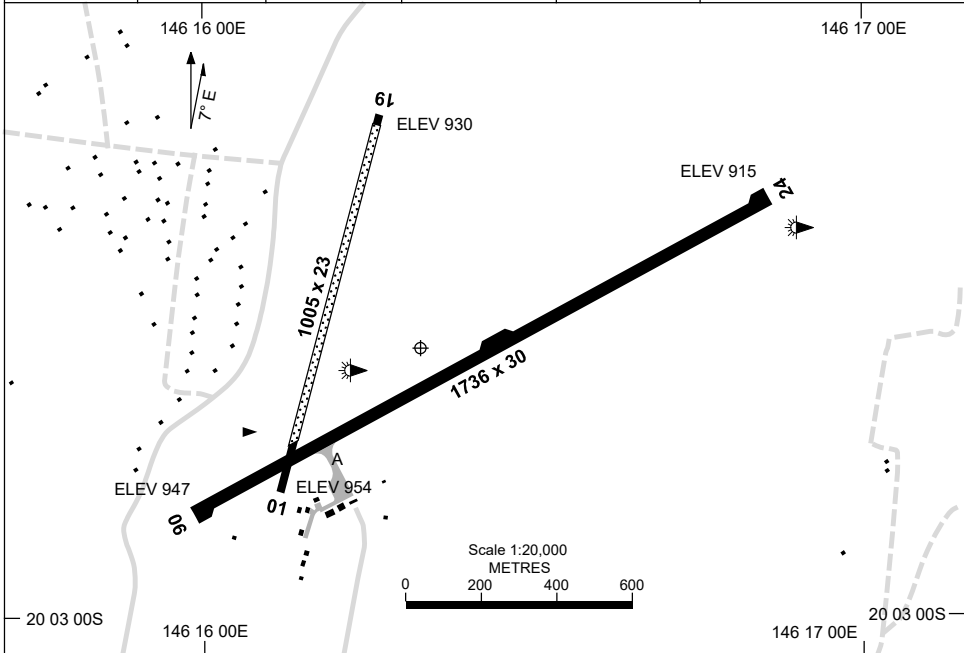


5 SEP 2024

AD ELEV 955
20 02 37S 146 16 20E

AERODROME CHART
CHARTERS TOWERS, QLD (YCHT)

FIA BN CEN 120.55	CTAF + AFRU 126.7	AFRU+PAL 126.7			Bearings are Magnetic Elevations in FEET AMSL
----------------------	----------------------	-------------------	--	--	--



RWY	AERODROME LIGHTING	
		TAXIWAY : BLUE EDGE
01 ⁰⁰⁸	NIL	
188 19	NIL	
06 ⁰⁵⁴	LIRL	
234 24	LIRL	

NOTES

1. FIA FREQ 120.55 AVBL IN CIRCUIT AREA.

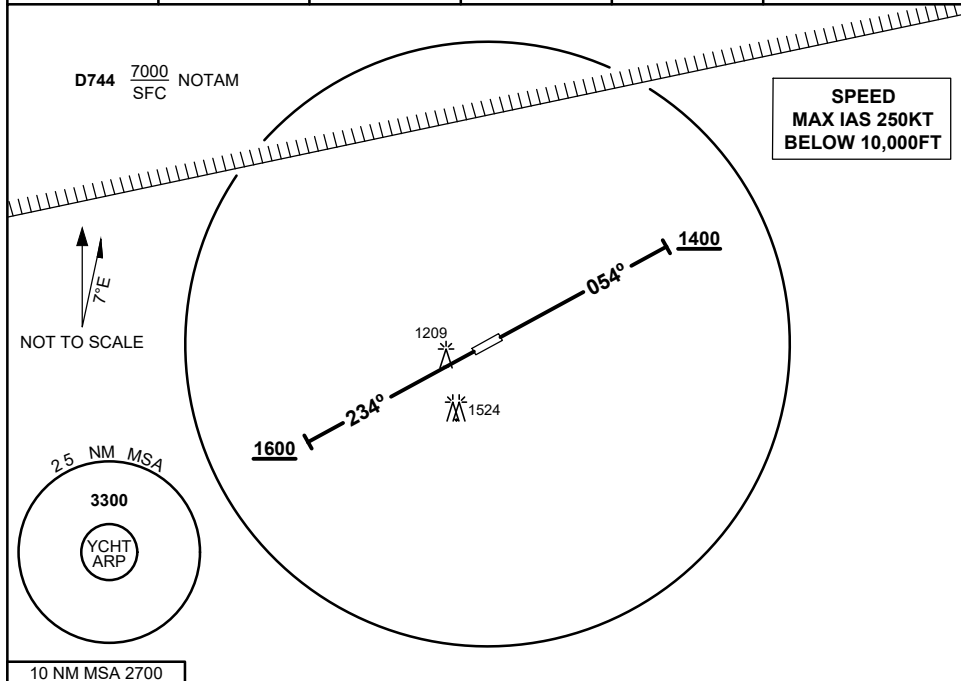
Changes: TWY A, Editorial.

CHTAD01-180

**STANDARD INSTRUMENT DEPARTURES (SID)
 CHARTERS TOWERS ONE DEPARTURE
 CHARTERS TOWERS, QLD (YCHT)**

8 SEP 2022

FIA BN CEN 120.55	CTAF + AFRU 126.7	AFRU + PAL 126.7			Bearings are Magnetic Elevations in FEET AMSL
-----------------------------	-----------------------------	----------------------------	--	--	--



10 NM MSA 2700

CHARTERS TOWERS ONE DEPARTURE

RWY 06

- GRAD 6.4% to 1200FT, thence 3.3%
- Track 054°
- AT or ABV 1400FT turn as required
- Continue climb to 3300FT
- Intercept flight plan route

RWY 24

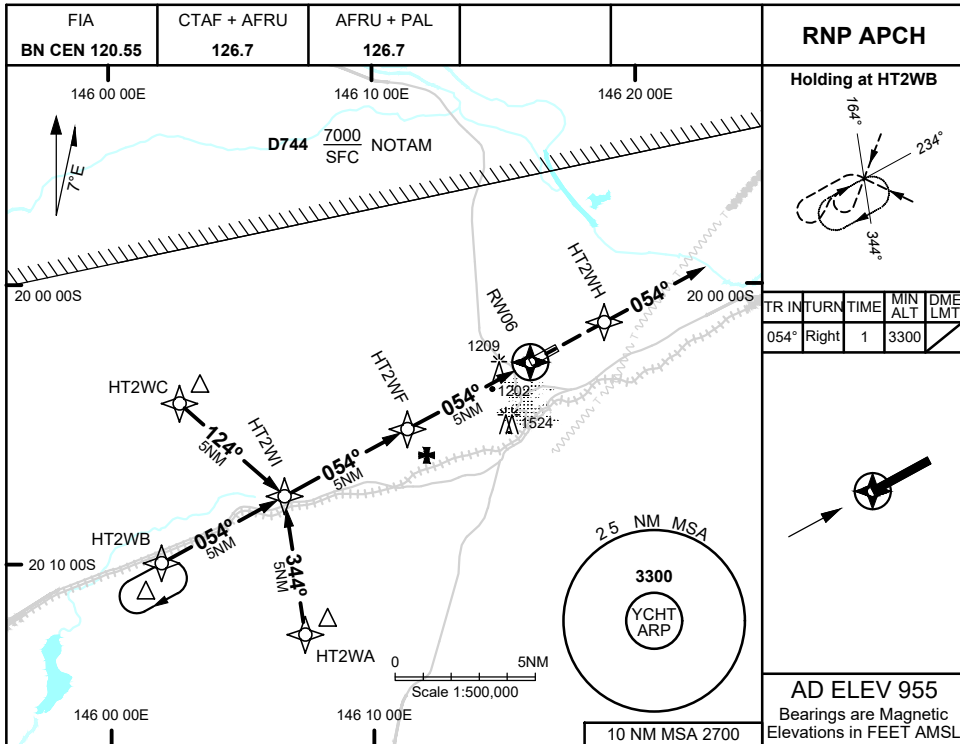
- GRAD 4.4% to 1600FT, thence 3.3%
- Track 234°
- AT or ABV 1600FT turn as required
- Continue climb to 3300FT
- Intercept flight plan route

Changes: FROM SUP H46/22

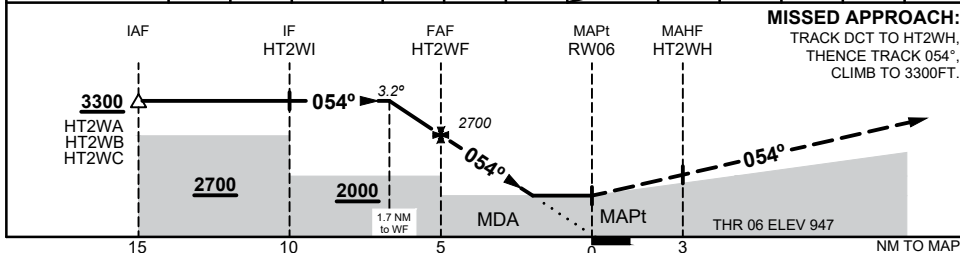
CHTDP01-172

8 SEP 2022

CHARTERS TOWERS, QLD (YCHT)



NM TO NEXT WPT	1.7	1	HT2WF	4	3	2	RW06			
ALT (3.2° APCH PATH)	3300	3040	2700	2360	2020	1660				



MISSED APPROACH:
TRACK DCT TO HT2WH,
THENCE TRACK 054°,
CLIMB TO 3300FT.

NOTES

- MAX IAS:
INITIAL : 210KTS

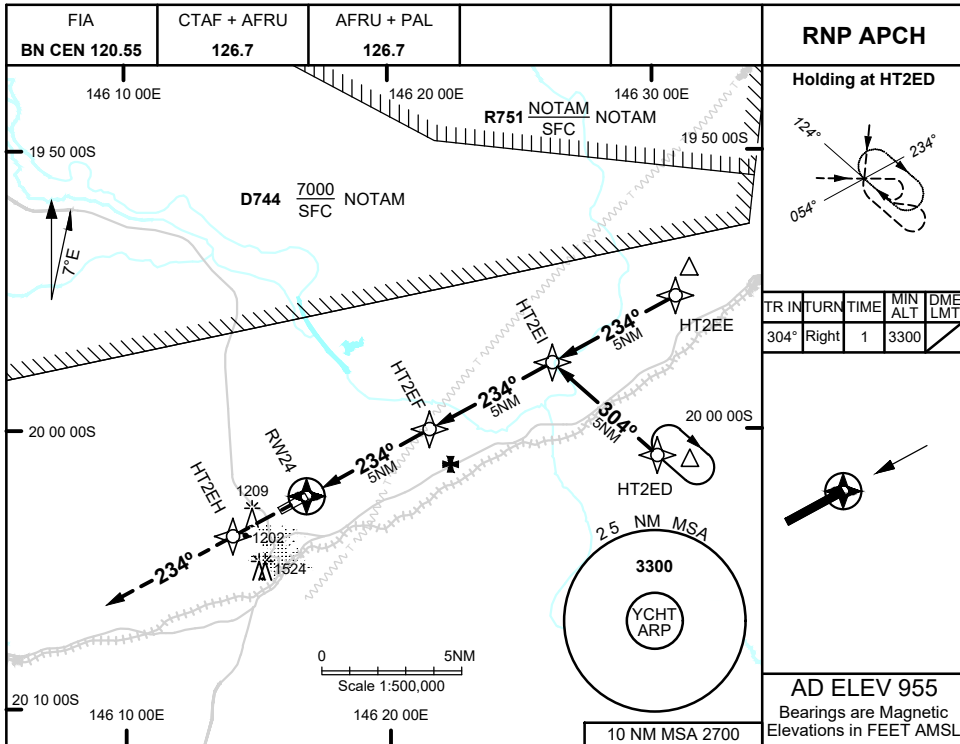
CATEGORY	A	B	C	D
LNAV	1660 (713 - 3.8)			NOT APPLICABLE
CIRCLING	1920 (965 - 2.4)		2020 (1065 - 4.0)	
ALTERNATE	(1465 - 4.4)		(1565 - 6.0)	

Changes: FROM SUP H46/22

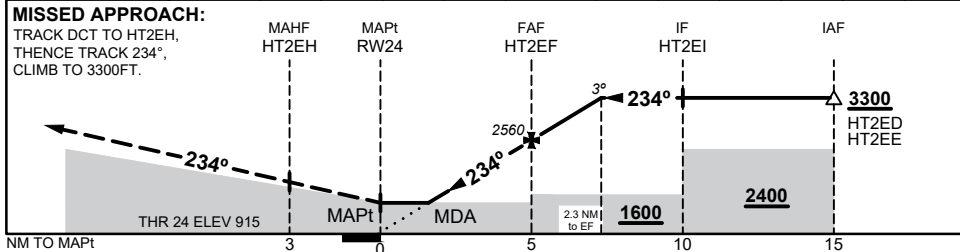
CHTGN01-172

8 SEP 2022

CHARTERS TOWERS, QLD (YCHT)



NM TO NEXT WPT	RW24	1.6	2	3	4	HT2EF	1	2	2.3		
ALT (3° APCH PATH)		1460	1600	1920	2240	2560	2880	3190	3300		



NOTES

- MAX IAS:
INITIAL : 210KTS

CATEGORY	A	B	C	D
LNAV	1460 (545 - 3.1)			NOT APPLICABLE
CIRCLING	1920 (965 - 2.4)		2020 (1065 - 4.0)	
ALTERNATE	(1465 - 4.4)		(1565 - 6.0)	

Changes: FROM SUP H46/22

CHTGN02-172