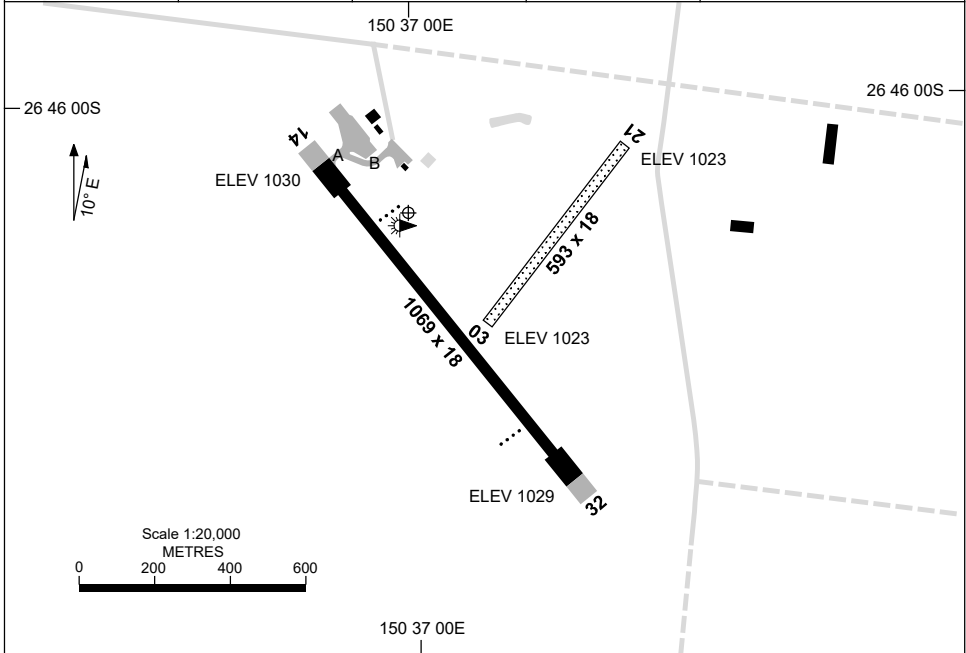


7 SEP 2023

AD ELEV 1030  
26 46 10S 150 37 00E

AERODROME CHART  
**CHINCHILLA, QLD (YCCA)**

AWIS 133.25	FIA BN CEN 123.95	CTAF+AFRU 126.35	PAL 121.3	Bearings are Magnetic Elevations in FEET AMSL
----------------	----------------------	---------------------	--------------	--



AERODROME LIGHTING	
<b>RWY</b>	TAXIWAY : BLUE EDGE ON TWY A RL : PAL 121.3
<b>14</b> <sup>132</sup>	PAPI 3.0° 29FT LIRL RTIL
<sup>312</sup> <b>32</b>	PAPI 3.0° 29FT LIRL RTIL
<b>03</b> <sup>028</sup>	NIL
<sup>208</sup> <b>21</b>	NIL

**NOTES**

- FIA FREQ 123.95 AVBL IN CIRCUIT AREA.
- RTIL ACT HN.

Changes: NOTE 2.

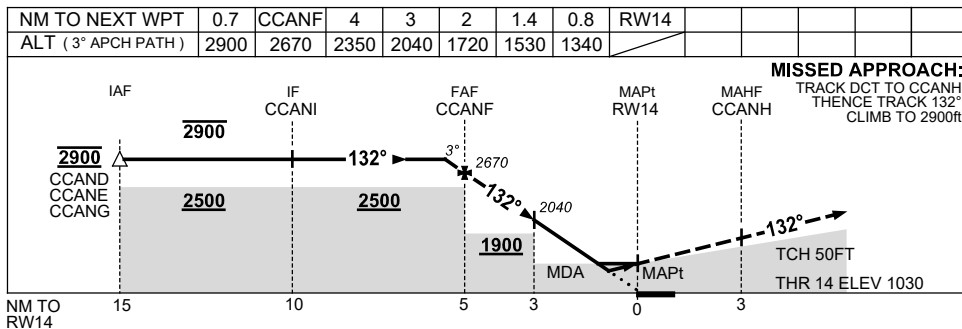
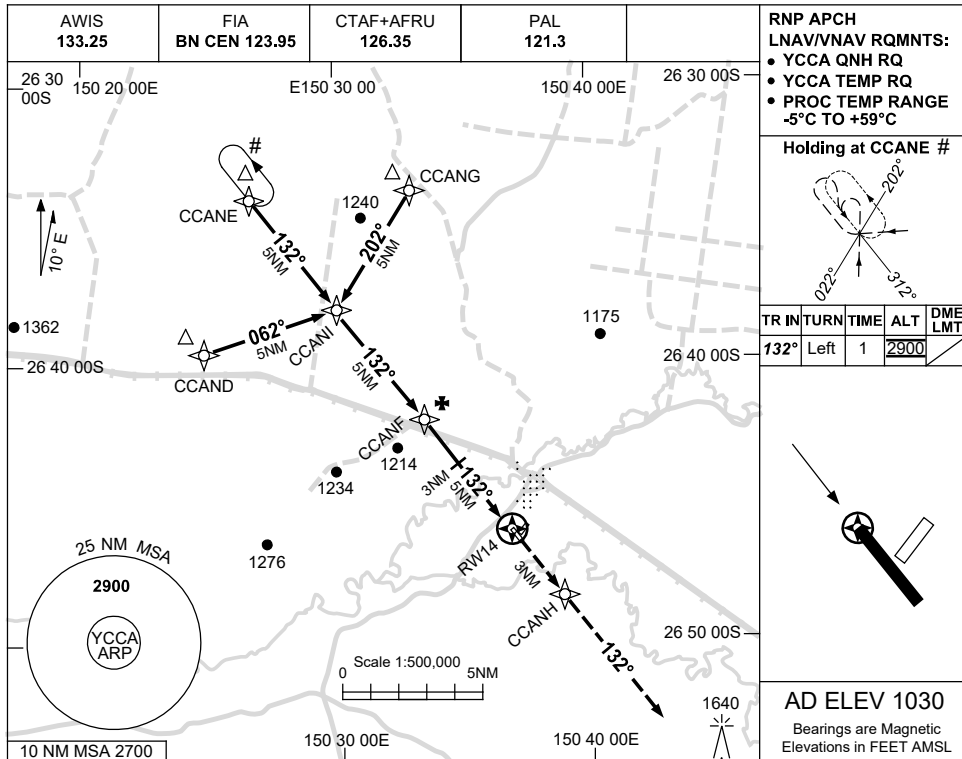
CCAAD01-176

USE QNH

RNP RWY 14

28 NOV 2024

CHINCHILLA, QLD (YCCA)



NOTES

CATEGORY	A	B	C	D
LNAV/VNAV	1340 (310-1.7)			
LNAV	1530 (500-2.8)			
CIRCLING	1630 (600-2.4)		1810 (780-4.0)	
ALTERNATE	(1100-4.4)		(1280-6.0)	

- MAX IAS: INITIAL : 210KT.
- PROC OVERLAID BY YMLS RNP RWY 22 HOLDING PATTERN AND INITIAL SEGMENTS. PRESCRIBED ALTITUDES ENSURE SEPARATION.

Changes: HOLDING ALT, NOTE 2.

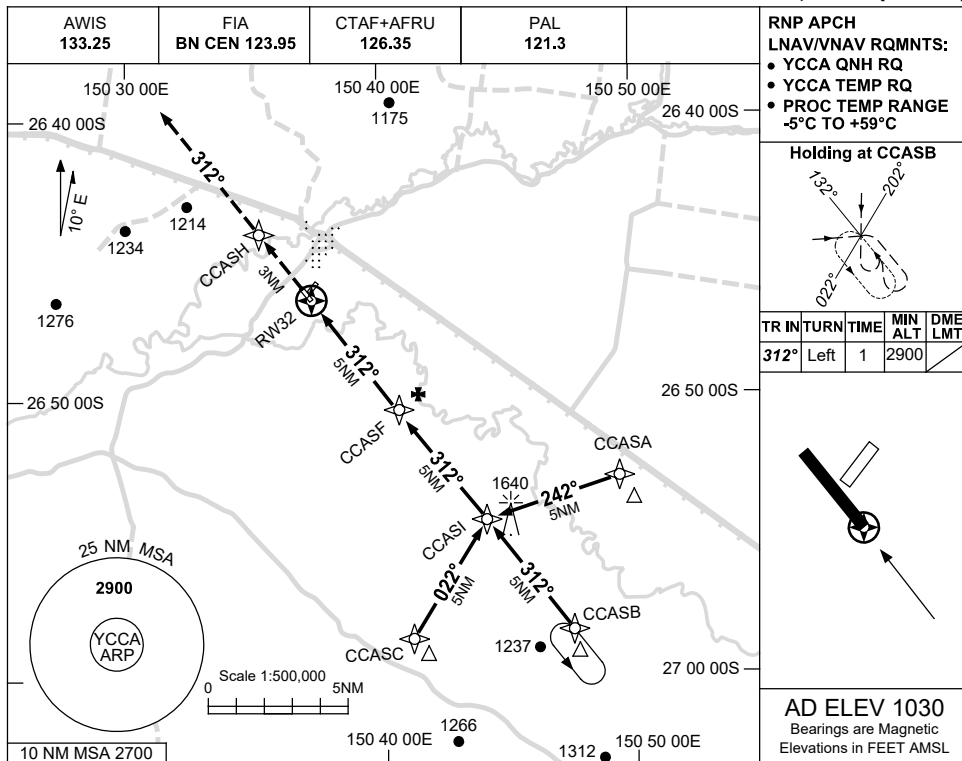
CCAGN01-181

USE QNH

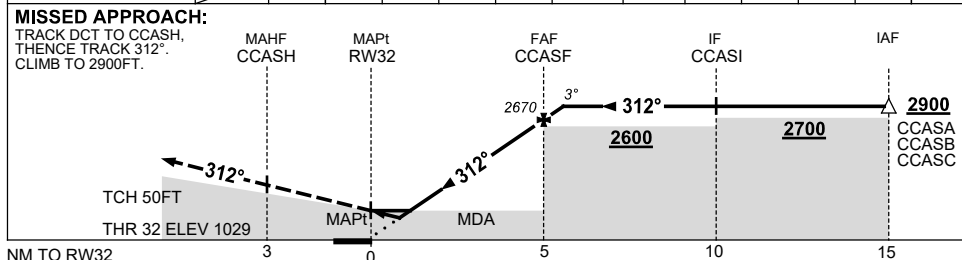
RNP RWY 32

**CHINCHILLA, QLD (YCCA)**

16 JUN 2022



NM TO NEXT WPT	RW32	0.8	1.4	2	3	4	CCASF	0.7						
ALT (3° APCH PATH)		1340	1530	1720	2040	2350	2670	2900						



**NOTES**

CATEGORY	A	B	C	D
LNAV/VNAV		<b>1340</b> (311-1.7)		<b>NOT APPLICABLE</b>
LNAV		<b>1530</b> (500-2.8)		
CIRCLING	<b>1630</b> (600-2.4)		<b>1810</b> (780-4.0)	
ALTERNATE	(1100-4.4)		(1280-6.0)	

1. MAX IAS:  
INITIAL : 210KT.

Changes: CHART TITLE, PBN SPECIFICATION BOX.

CCAGN02-171