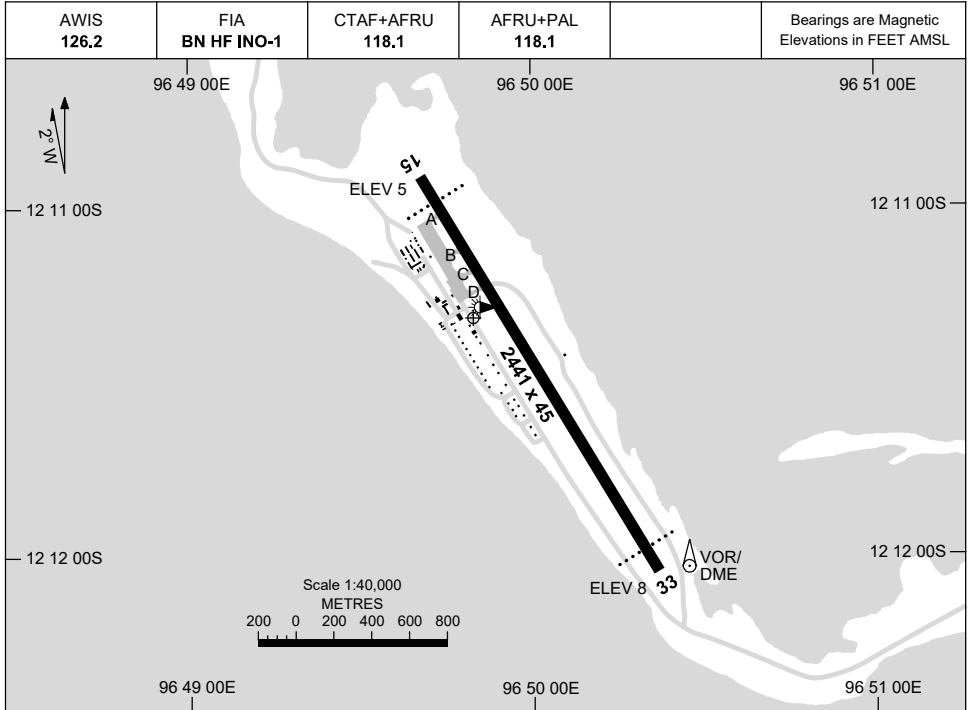


AD ELEV 10
12 11 19S 96 49 50E

AERODROME CHART

8 SEP 2022

COCOS (KEELING) ISLANDS, AUSTRALIA (YPCC)



AERODROME LIGHTING	
RWY	TAXIWAY : BLUE EDGE RL : AFRU+PAL 118.1 , SDBY (13 SEC) , PTBL (EMERG ONLY, 90 MIN PN)
15 <small>151</small>	PAPI 3.0° 53FT LIRL PTBL
<small>331</small> 33	PAPI 3.0° 53FT LIRL PTBL

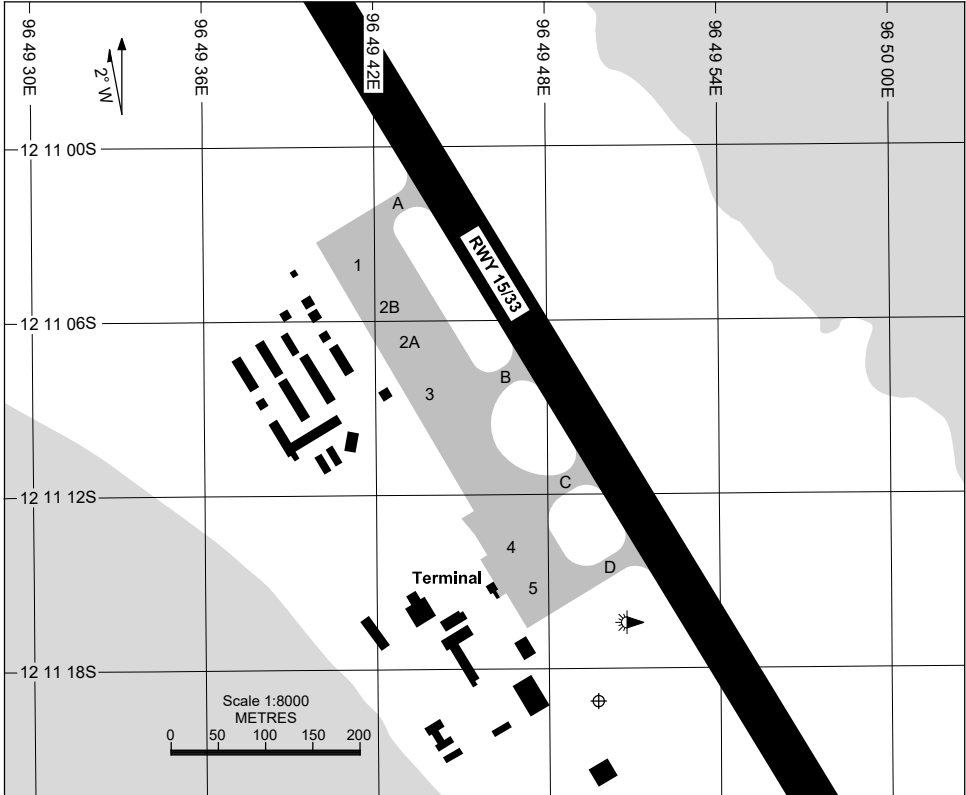
NOTES

Changes: PTBL LIGHTING PN.

PCCAD01-172

17 JUN 2021

COCOS (KEELING) ISLANDS, AUSTRALIA (YPCC)



PARKING POSITION INFORMATION

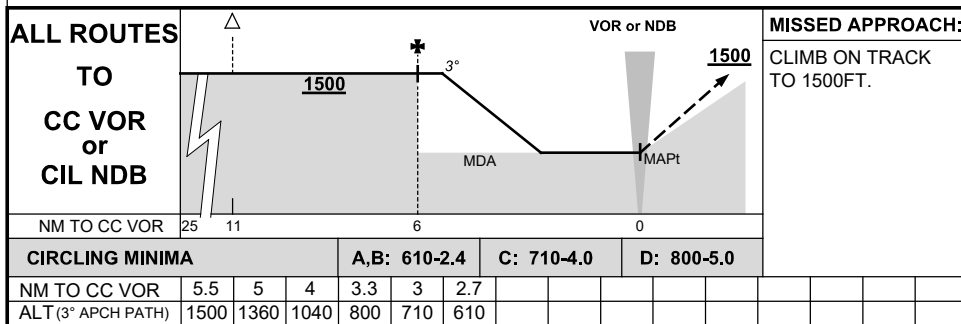
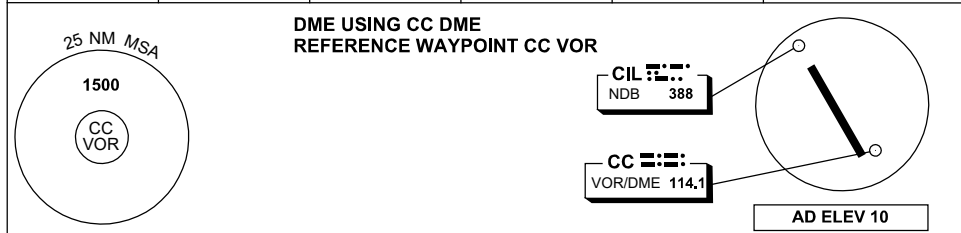
STAND	CO-ORDINATES	ELEV (ft)	CAPACITY	FUEL
1	12 11 04.70S 96 49 41.66E	9	B738/C130/P3	TANKER
2A	12 11 07.40S 96 49 43.66E	9	B738/C130/P3	TANKER
2B	12 11 06.29S 96 49 42.98E	9	B738/C130/P3	TANKER
3	12 11 09.21S 96 49 44.49E	9	B738/C130/P3	TANKER
4	12 11 14.57S 96 49 47.38E	9	B738	TANKER
5	12 11 15.99S 96 49 48.25E	9	B738	TANKER

Changes: BAYS CAPACITY UPDATE.

DME or GNSS ARRIVAL PROCEDURES COCOS (KEELING) ISLANDS, AUSTRALIA (YPCC)

5 NOV 2020

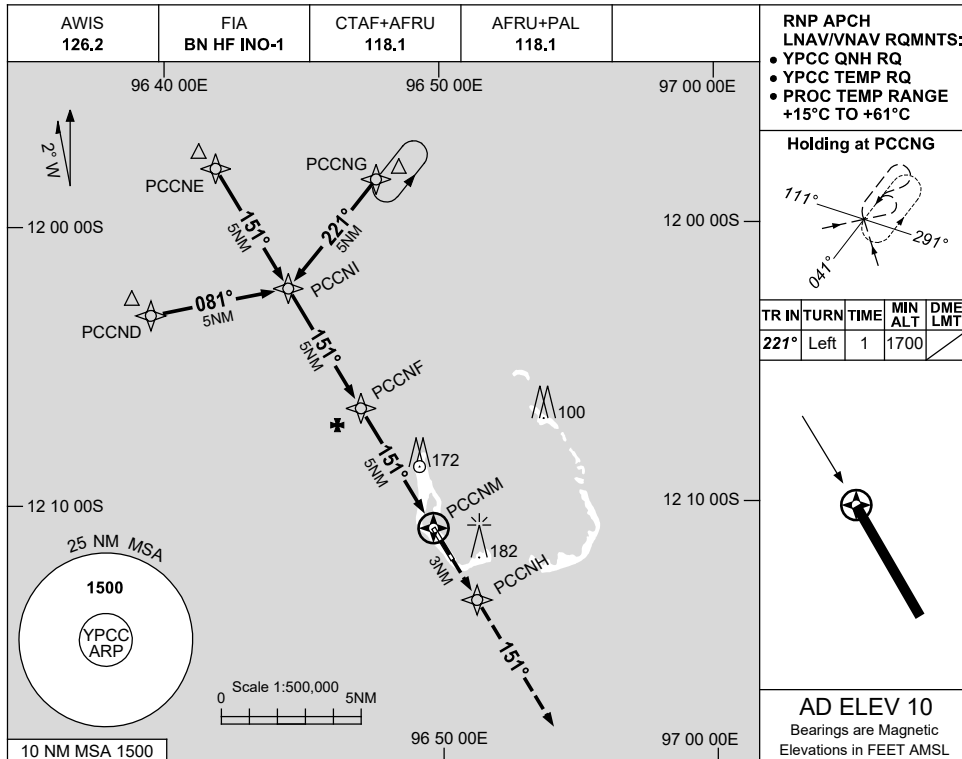
AWIS 126.2	FIA BN HF INO-1	CTAF+AFRU 118.1	AFRU+PAL 118.1		Bearings are Magnetic Elevations in FEET AMSL
---------------	--------------------	--------------------	-------------------	--	--



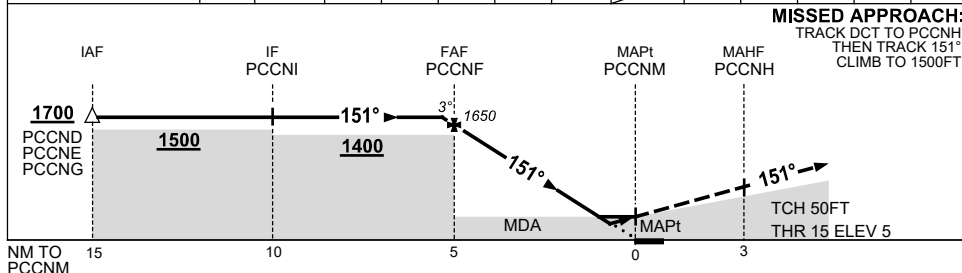
USE QNH
COCOS (KEELING) ISLANDS, AUSTRALIA (YPCC)

RNP RWY 15

7 SEP 2023



NM TO NEXT WPT	0.2	PCCNF	4	3	2	1.6	1	PCCNM					
ALT (3° APCH PATH)	1700	1650	1330	1010	690	550	370						



NOTES

CATEGORY	A	B	C	D
LNAV/VNAV	370 (365-2.0)			
LNAV	550 (540-3.1)			
CIRCLING	610 (600-2.4)		710 (700-4.0)	800 (790-5.0)
ALTERNATE	(1100-4.4)		(1200-6.0)	(1290-7.0)

1. MAX IAS:
INITIAL : 210KT.

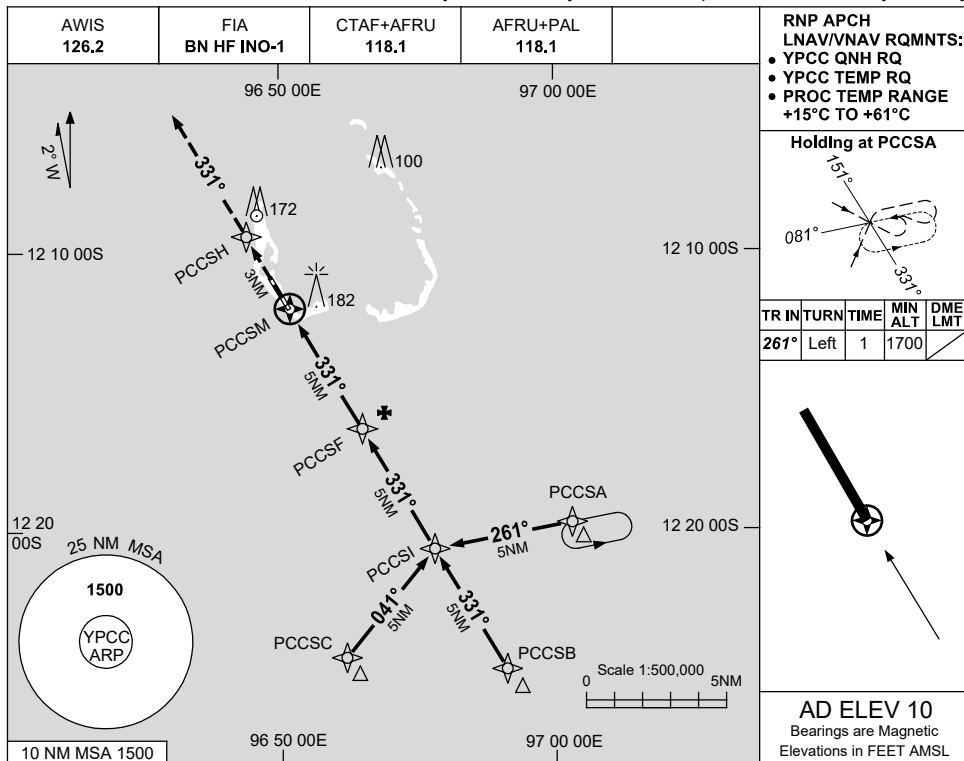
Changes: CHART TITLE, PBN SPECIFICATION BOX, Editorial.

PCCGN01-176

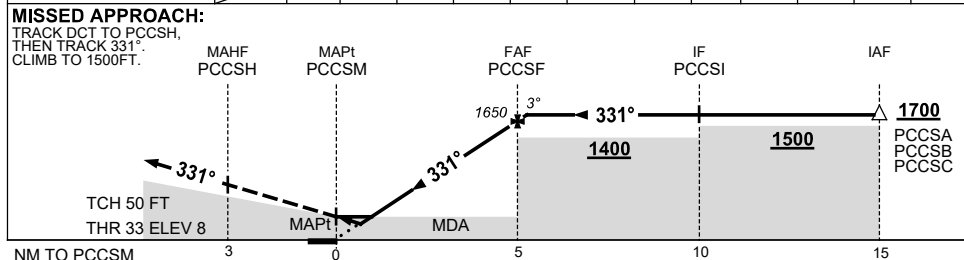
USE QNH
COCOS (KEELING) ISLANDS, AUSTRALIA (YPCC)

RNP RWY 33

7 SEP 2023



NM TO NEXT WPT	PCCSM	1	1.6	2	3	4	PCCSF	0.2				
ALT (3° APCH PATH)		370	550	690	1010	1330	1650	1700				



NOTES

CATEGORY	A	B	C	D
LNAV/VNAV		370 (362-2.0)		
LNAV		550 (540-3.1)		
CIRCLING	610 (600-2.4)		710 (700-4.0)	800 (790-5.0)
ALTERNATE	(1100-4.4)		(1290-7.0)	

1. MAX IAS:
INITIAL : 210KT.

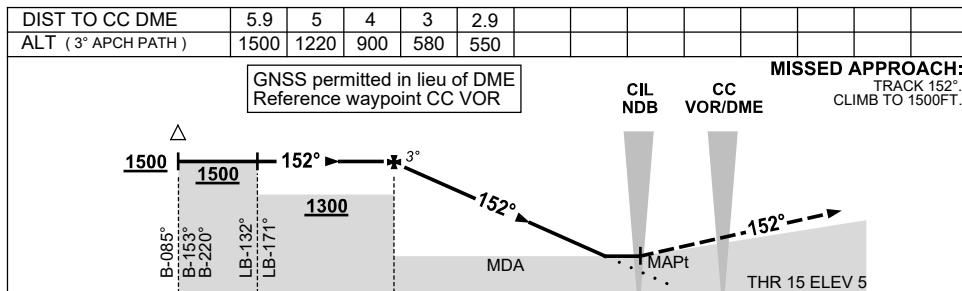
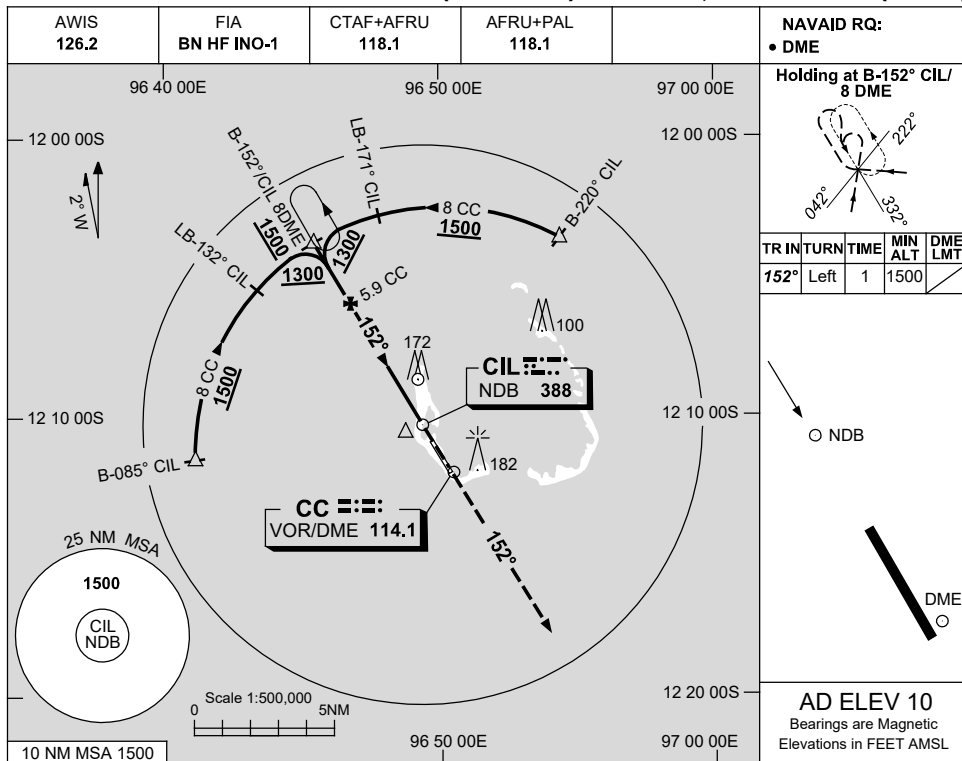
Changes: CHART TITLE, PBN SPECIFICATION BOX, Editorial.

PCCGN02-176

USE QNH
COCOS (KEELING) ISLANDS, AUSTRALIA (YPCC)

NDB-Z RWY 15

5 NOV 2020



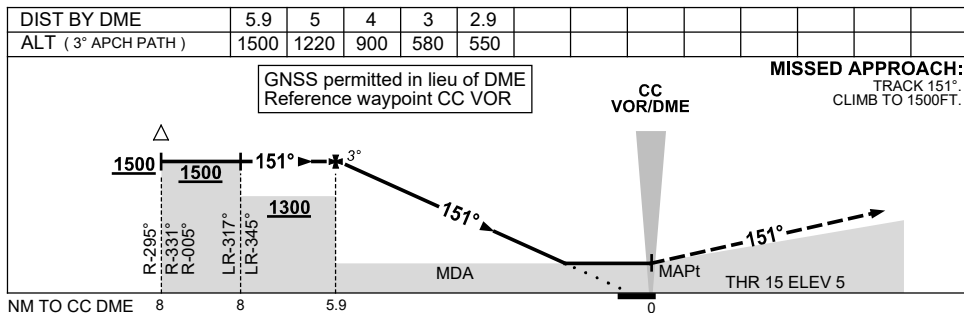
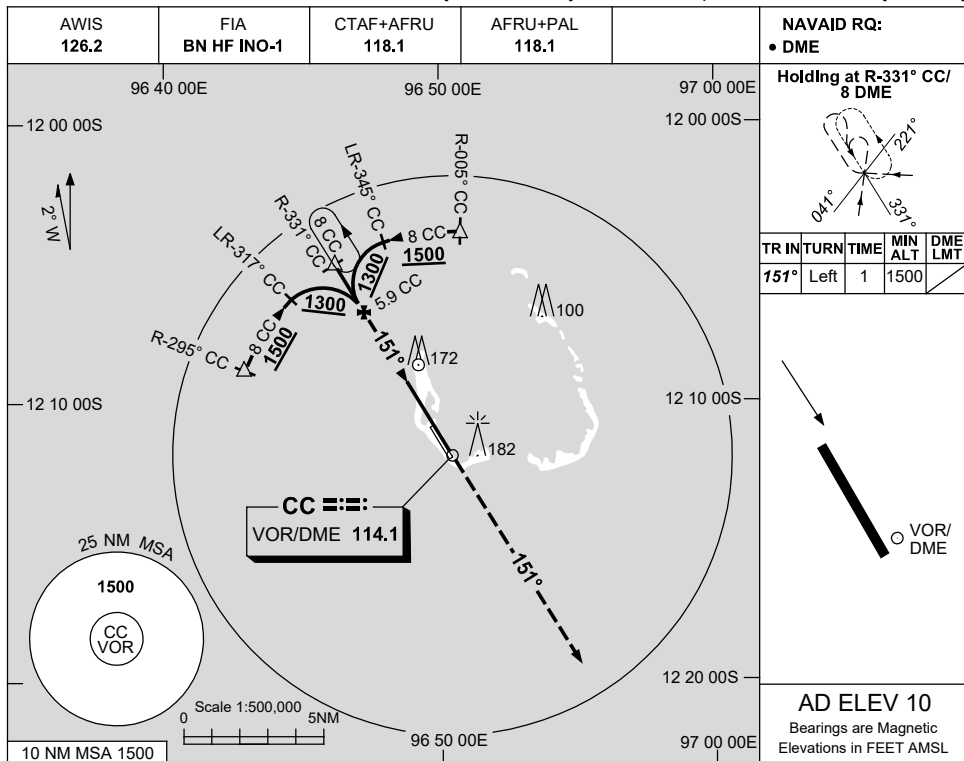
CATEGORY	A	B	C	D
S-I NDB/DME	550 (540-3.1)			
CIRCLING	610 (600-2.4)	710 (700-4.0)	800 (790-5.0)	
ALTERNATE	(1100-4.4)	(1200-6.0)	(1290-7.0)	

NOTES
1. MAX IAS:
INITIAL: 210KT.

Changes: AD NAME, COORD FMT, Editorial.

PCCNB02-165

USE QNH **VOR-Z RWY 15**
5 NOV 2020 **COCOS (KEELING) ISLANDS, AUSTRALIA (YPCC)**



CATEGORY	A	B	C	D
S-I VOR/DME	550 (540-3.1)			
CIRCLING	610 (600-2.4)	710 (700-4.0)	800 (790-5.0)	
ALTERNATE	(1100-4.4)		(1290-7.0)	

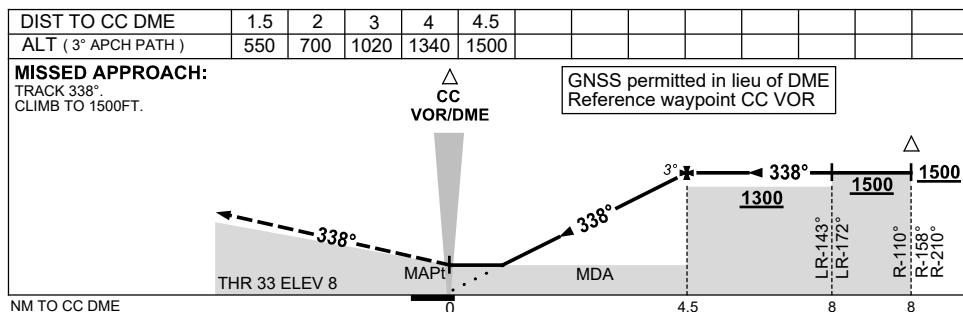
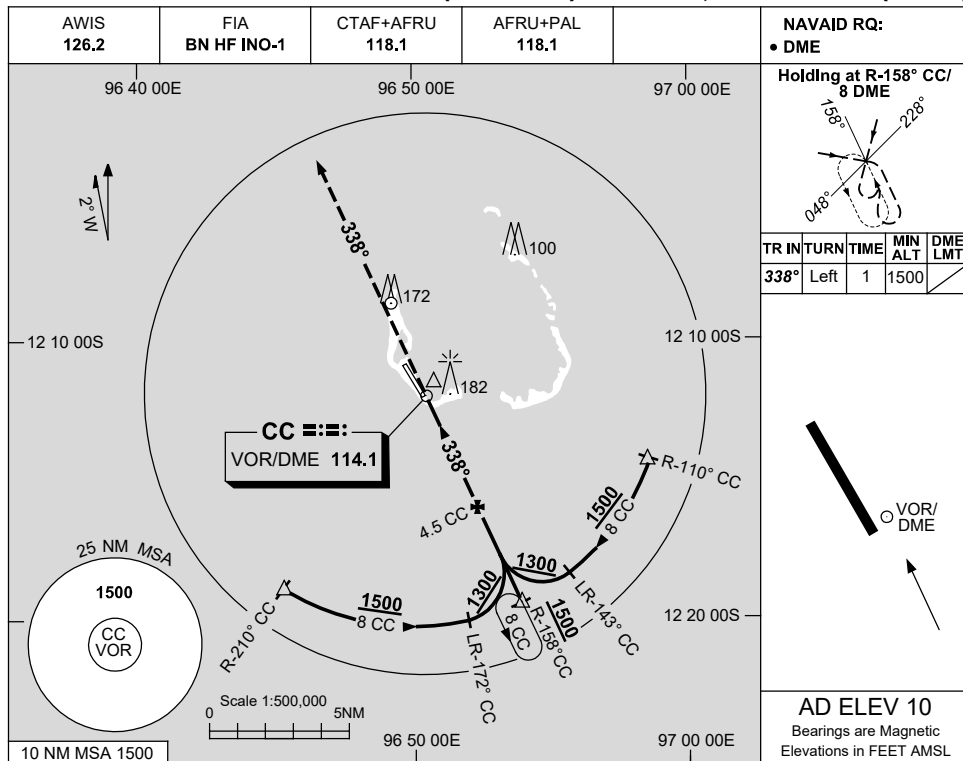
NOTES

- MAX IAS:
INITIAL: 210KT.

Changes: AD NAME, COORD FMT, Editorial. PCCVO03-165

USE QNH VOR-Z RWY 33
COCOS (KEELING) ISLANDS, AUSTRALIA (YPCC)

5 NOV 2020



CATEGORY	A	B	C	D
S-I VOR/DME	550 (540-3.1)			
CIRCLING	610 (600-2.4)	710 (700-4.0)	800 (790-5.0)	
ALTERNATE	(1100-4.4)	(1200-6.0)	(1290-7.0)	

NOTES
1. MAX IAS:
INITIAL : 210KT.

Changes: AD NAME, COORD FMT, Editorial.

PCCVO04-165