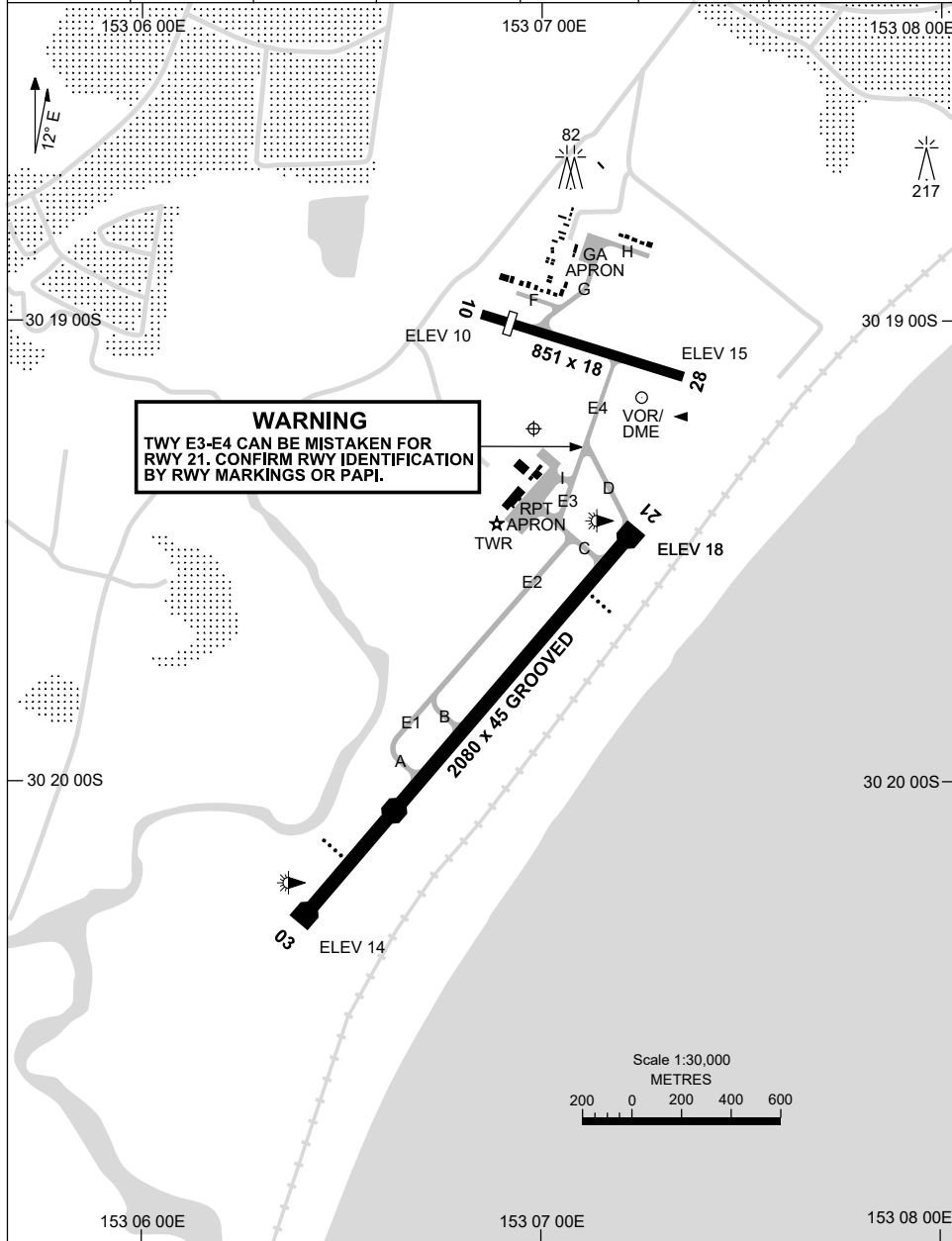


21 MAR 2024

AD ELEV 18
30 19 14S 153 06 59E

AERODROME CHART - Page 1
COFFS HARBOUR, NSW (YCFS)

ATIS 117.0 130.3	AWIS (AH) 122.475	TWR 118.2	CTAF+AFRU (AH) 118.2	FIA (AH) BN CEN 122.6	AFRU+PAL (AH) 118.2	Bearings are Magnetic Elevations in FEET AMSL
---------------------	----------------------	--------------	-------------------------	--------------------------	------------------------	--



Changes: WDI RELOCATED, Editorial.

CFSAD01-178

8 SEP 2022

AD ELEV 18
30 19 14S 153 06 59E

AERODROME CHART - Page 2
COFFS HARBOUR, NSW (YCFS)

ATIS 117.0 130.3	AWIS (AH) 122.475	TWR 118.2	CTAF+AFRU (AH) 118.2	FIA (AH) BN CEN 122.6	AFRU+PAL (AH) 118.2	Bearings are Magnetic Elevations in FEET AMSL
---------------------	----------------------	--------------	-------------------------	--------------------------	------------------------	--

--	--	--	--	--	--	--

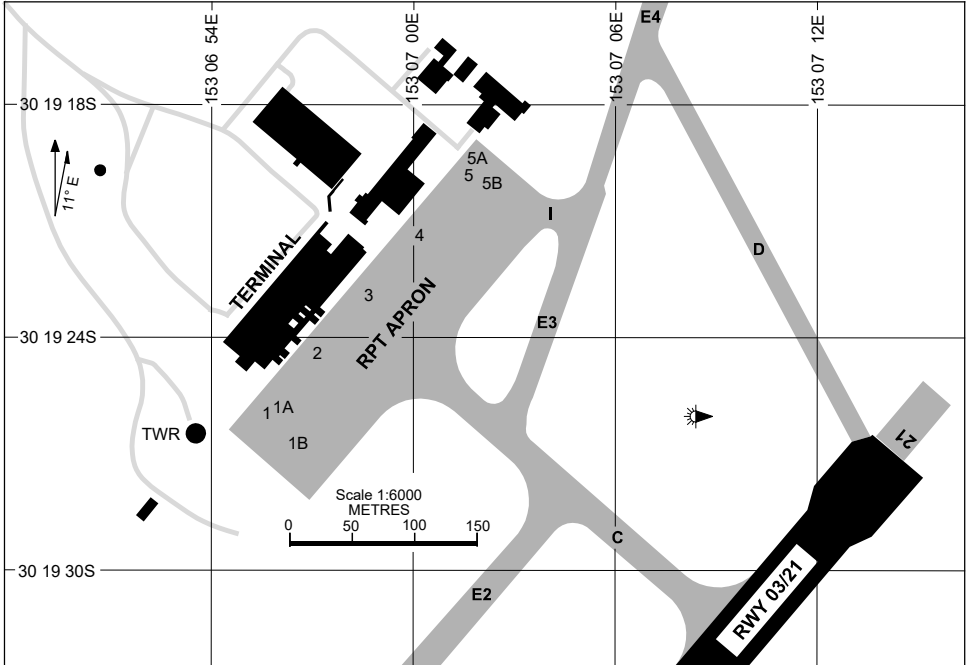
RWY	AERODROME LIGHTING					
		ABN : ALTN W/G 8 SEC TAXIWAY : BLUE EDGE RL : AFRU+PAL 118.2 (AH) , SDBY (15 SEC)				
03 ⁰²⁹ 209 21	PAPI 3.0° 51FT MIRL					
10 ⁰⁹⁵ 275 28	NIL					

NOTES						

Changes: NOTES.

CFSAD02-172

21 MAR 2024



PARKING POSITION INFORMATION

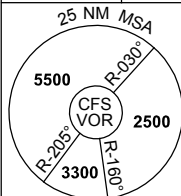
STAND	CO-ORDINATES		ELEV (ft)	CAPACITY	HYDRANT FUEL
1	30 19 25.95S	153 06 55.67E	11	A321/B738	NIL
1A	30 19 25.81S	153 06 56.12E	11	S340/SW4	NIL
1B	30 19 26.70S	153 06 56.53E	11	S340/SW4	NIL
2	30 19 24.42S	153 06 57.18E	12	A321/B738	NIL
3	30 19 22.89S	153 06 58.68E	12	A321/B738	NIL
4	30 19 21.36S	153 07 00.19E	13	A321/B738	NIL
5	30 19 19.79S	153 07 01.65E	12	A321/B738	NIL
5A	30 19 19.40S	153 07 01.87E	12	B350	NIL
5B	30 19 20.03S	153 07 02.31E	12	B350	NIL

Changes: 1A, 1B, 5A, 5B ADDED, Editorial.

DME or GNSS ARRIVAL PROCEDURES COFFS HARBOUR, NSW (YCFS) Page 1

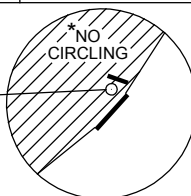
28 FEB 2019

ATIS 117.0 130.3	AWIS (AH) 122.475	TWR 118.2	CTAF+AFRU (AH) 118.2	FIA (AH) BN CEN 122.6	AFRU+PAL (AH) 118.2	Bearings are Magnetic Elevations in FEET AMSL
---------------------	----------------------	--------------	-------------------------	--------------------------	------------------------	--



DME USING CFS DME REFERENCE WAYPOINT CFS VOR

CFS VOR/DME 117.0



* NO CIRCLING W
OF RWY 03/21.

AD ELEV 18

SECTOR A

MISSED APPROACH:

TURN LEFT,
INTERCEPT 090°
OUTBOUND FROM
CFS VOR. CLIMB TO
2500FT.

NM TO CFS VOR	30	15	7	6	5	3	0						
CIRCLING MINIMA	A,B: 1920-2.4		C: 1920-4.0		D: 1920-5.0								
NM TO CFS VOR	6.1	5	4	3	2	1.8							
ALT (3° APCH PATH)	3300	2950	2630	2310	1990	1920							

SECTOR B

MISSED APPROACH:

TURN RIGHT,
INTERCEPT 090°
OUTBOUND FROM
CFS VOR. CLIMB TO
2500FT.

NM TO CFS VOR	30	19	15	14	9	6	5	2	0				
CIRCLING MINIMA	A,B: 1190-2.4		C: 1190-4.0		D: 1190-5.0								
NM TO CFS VOR	12.5	12	11	10	9	8	7	6	5	4	3	2	1.8
ALT (3° APCH PATH)	4600	4430	4120	3800	3480	3160	2840	2520	2200	1890	1570	1250	1190

SECTOR C

MISSED APPROACH:

TURN RIGHT,
INTERCEPT 090°
OUTBOUND FROM
CFS VOR. CLIMB TO
2500FT.
MAX IAS: 230KT UNTIL
TRACKING 090°.
OUTBOUND FROM
CFS VOR.

NM TO CFS VOR	30	15	9	6	3	0							
CIRCLING MINIMA	A,B: 1460-2.4		C: 1500-4.0		D: 1500-5.0								
NM TO CFS VOR	6.1	5	4	3	2.7	2.6							
ALT (3° APCH PATH)	2600	2250	1930	1610	1500	1460							

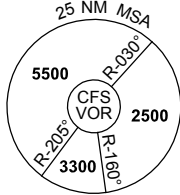
Changes: AWIS 122.475 CMSD, AWIS PH DELETED, Editorial.

CFSDG01-158

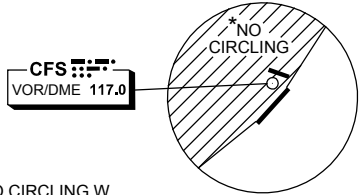
DME or GNSS ARRIVAL PROCEDURES COFFS HARBOUR, NSW (YCFS) Page 2

28 FEB 2019

ATIS 117.0 130.3	AWIS (AH) 122.475	TWR 118.2	CTAF+AFRU (AH) 118.2	FIA (AH) BN CEN 122.6	AFRU+PAL (AH) 118.2	Bearings are Magnetic Elevations in FEET AMSL
---------------------	----------------------	--------------	-------------------------	--------------------------	------------------------	--



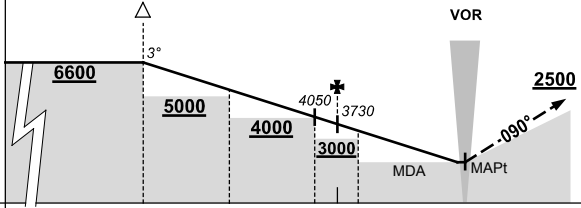
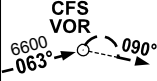
**DME USING CFS DME
REFERENCE WAYPOINT CFS VOR**



* NO CIRCLING W
OF RWY 03/21.

AD ELEV 18

**LOSQU TO
CFS VOR**



MISSED APPROACH:

TURN RIGHT,
INTERCEPT 090°
OUTBOUND FROM
CFS VOR. CLIMB TO
2500FT.

NM TO CFS VOR	25	15	11	7	6	5	0							
CIRCLING MINIMA	A,B: 1920-2.4			C: 1920-4.0		D: 1920-5.0								
NM TO CFS VOR	15	13	11	10	9	8	7	6	5	4	3	2	1	0.3
ALT (3° APCH PATH)	6600	5960	5320	5000	4690	4370	4050	3730	3410	3090	2780	2460	2140	1920

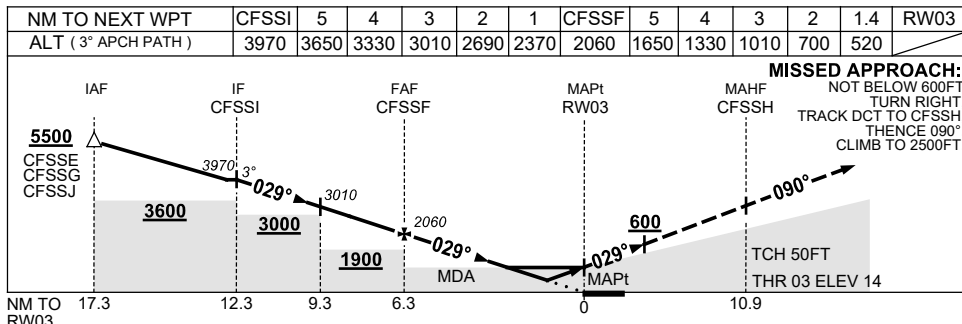
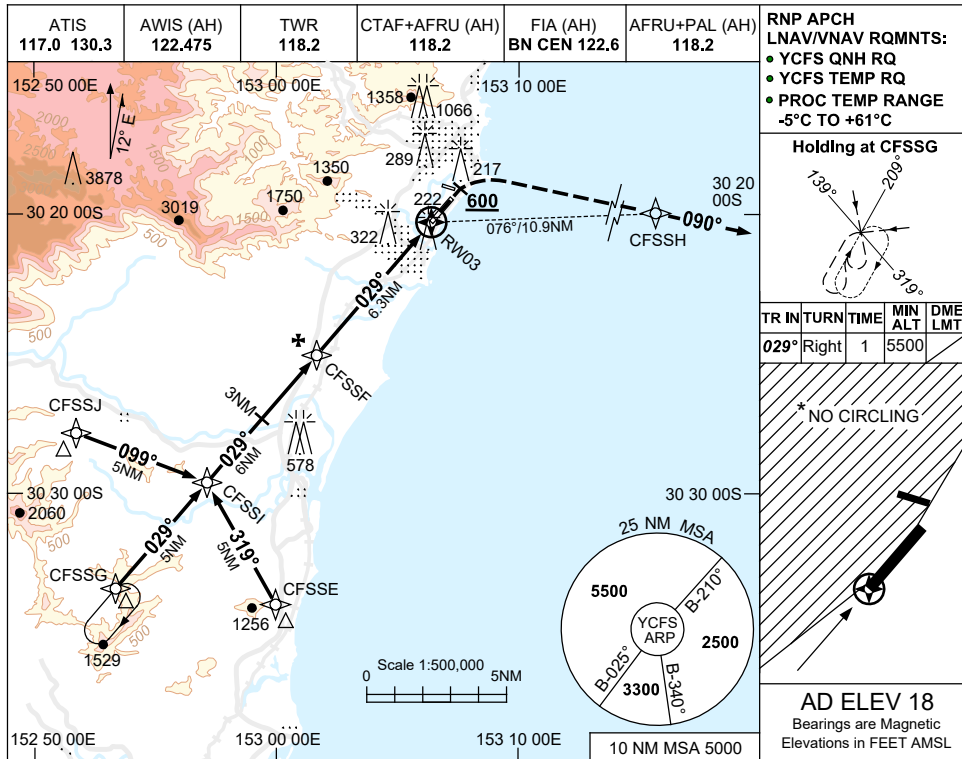
Changes: AWIS 122.475 CMSD, AWIS PH DELETED, Editorial.

USE QNH

RNP RWY 03

2 DEC 2021

COFFS HARBOUR, NSW (YCFS)



- NOTES**
- MAX IAS :
HOLDING : 210KT.
INITIAL : 210KT.
MAP TURN : 200KT.
 - *2. NO CIRCLING WEST OF RWY 03/21.
 3. COLOUR : SEE SPEC NOTICES.
- CAUTION**
DISUSED RWY (TWY E)
NTH OF RWY 21 THR.

CATEGORY	A	B	C	D
LNAV/VNAV		520 (506-2.9)		
LNAV		700 (682-3.9)		
CIRCLING *	800 (782-2.4)		890 (872-4.0)	890 (872-5.0)
ALTERNATE	(1282-4.4)		(1372-6.0)	(1372-7.0)

Changes: CHART TITLE, PBN SPECIFICATION BOX.

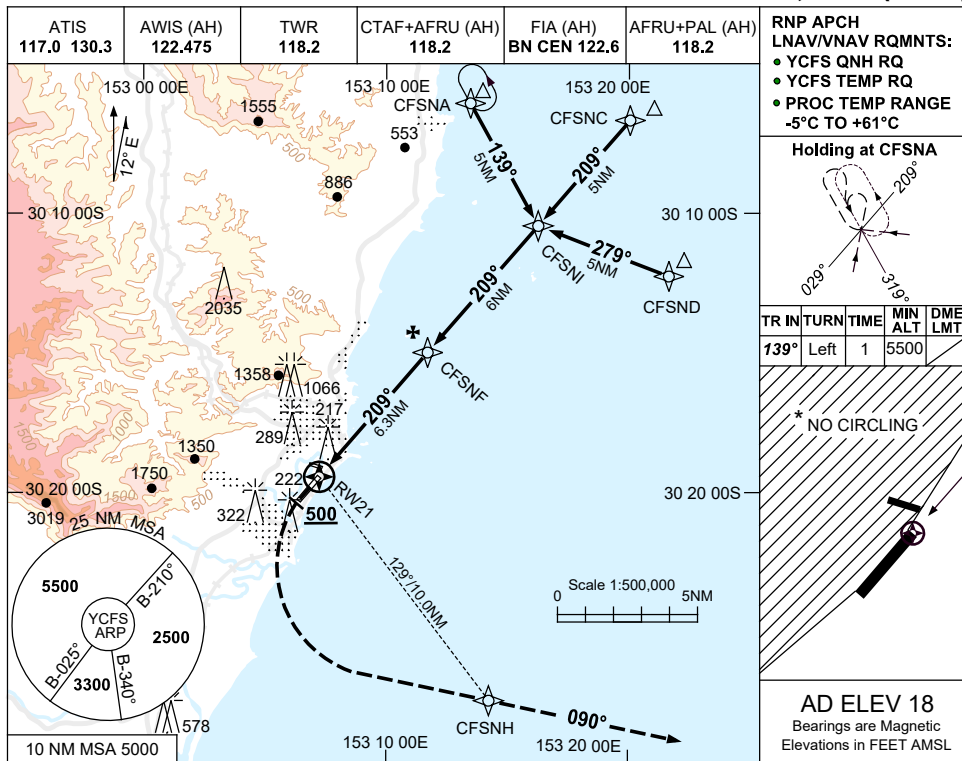
CFSGN01-169

USE QNH

RNP RWY 21

2 DEC 2021

COFFS HARBOUR, NSW (YCFS)

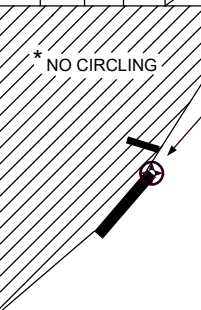


RNP APCH LNAV/VNAV RQMNTS:

- YCFS QNH RQ
- YCFS TEMP RQ
- PROC TEMP RANGE -5°C TO +61°C

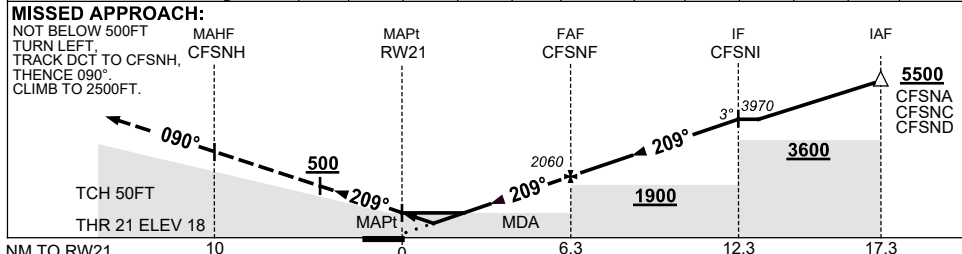
Holding at CFSNA

TR IN	TURN	TIME	MIN ALT	DME LMT
139°	Left	1	5500	



AD ELEV 18
 Bearings are Magnetic
 Elevations in FEET AMSL

NM TO NEXT WPT	RW21	1.4	3	4	5	CFSNF	1	2	3	4	5	CFSNI
ALT (3° APCH PATH)	500	680	1020	1340	1660	2060	2380	2700	3010	3330	3650	3970



- NOTES**
1. MAX IAS: INITIAL : 210KT.
 - *2. NO CIRCLING WEST OF RWY 03/21.
 3. PROC PARTIALLY OCTA.
 4. COLOUR: SEE SPEC NOTICES.
- CAUTION**
 DISUSED RWY (TWY E)
 NTH OF RWY 21 THR.

CATEGORY	A	B	C	D
LNAV/VNAV	500 (482-2.7)			
LNAV	680 (662-3.8)			
CIRCLING*	800 (782-2.4)	890 (872-4.0)	890 (872-5.0)	
ALTERNATE	(1282-4.4)	(1372-6.0)	(1372-7.0)	

Changes: CHART TITLE, PBN SPECIFICATION BOX.

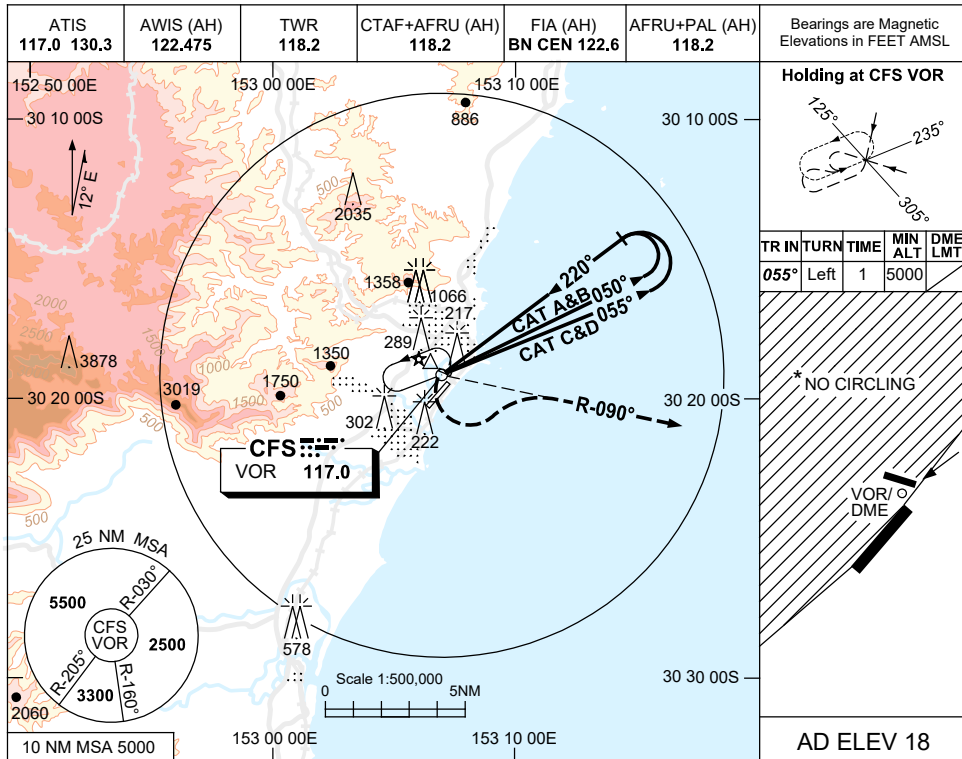
CFSGN02-169

USE QNH

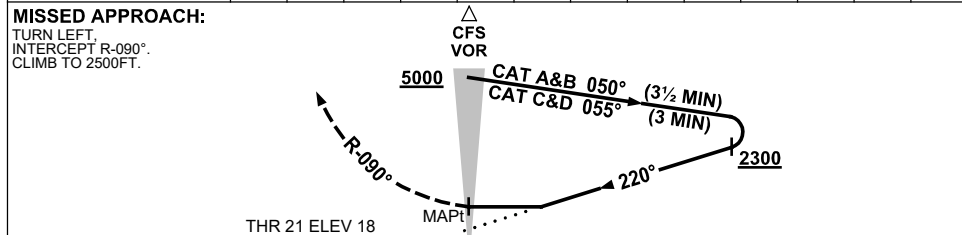
VOR-Y RWY 21

27 FEB 2020

COFFS HARBOUR, NSW (YCFS)



DIST TO CFS DME	NOT APPLICABLE				
ALT					



NOTES

1. MAX IAS: : 190KT .
INITIAL : 190KT .
MAP TURN : 190KT .
HOLDING : 210KT .
- *2. NO CIRCLING WEST OF RWY 03/21.
3. COLOUR: SEE SPEC NOTICES.

CAUTION

DISUSED RWY (TWY E) NTH OF RWY 21 THR.

CATEGORY	A	B	C	D
S-I VOR	800 (782-4.5)			
CIRCLING *	800 (782-2.4)		890 (872-4.0)	890 (872-5.0)
ALTERNATE	(1282-4.4)		(1372-6.0)	(1372-7.0)

Changes: FROM SUP H85/19, COORD FMT.

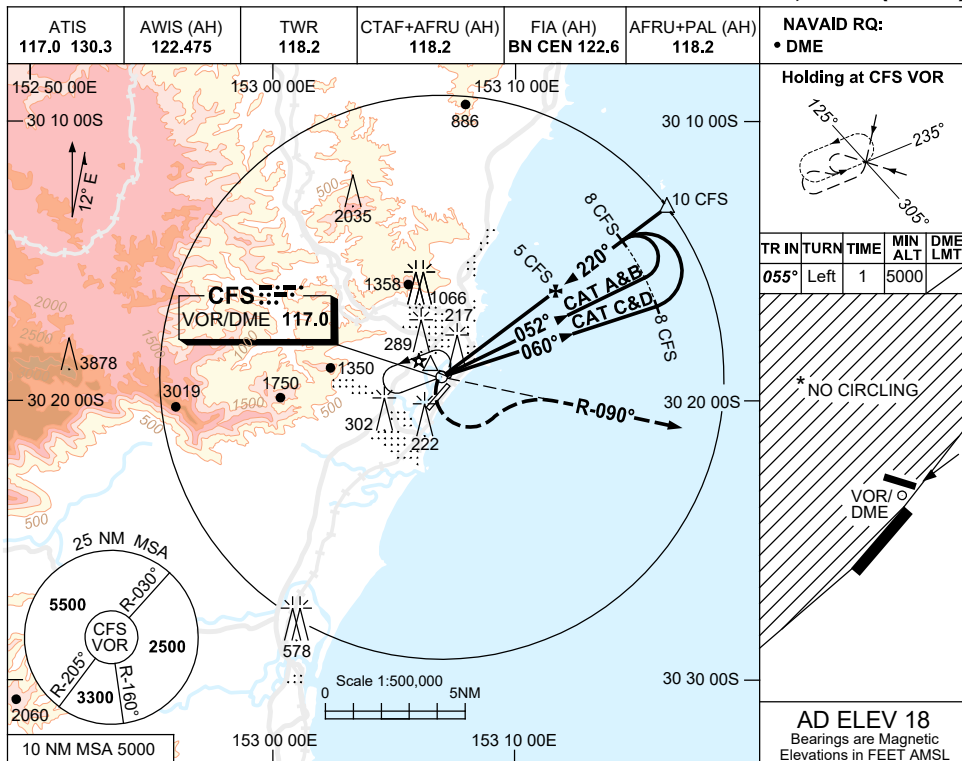
CFSV002-162

USE QNH

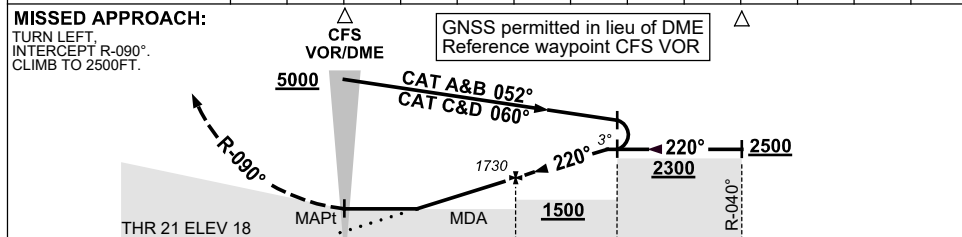
VOR-Z RWY 21

27 FEB 2020

COFFS HARBOUR, NSW (YCFS)



DIST TO CFS DME	1.8	2	3	4	5	6	7	8	9	10			
ALT (3° APCH PATH)	680	770	1090	1410	1730	2040	2360	2680	3000	3320			



NM TO CFS DME 0 5 8 10

NOTES

1. MAX IAS:
INITIAL : 190KT.
MAP TURN: 190KT.
HOLDING : 210KT.
- *2. NO CIRCLING WEST OF RWY 03/21.
3. COLOUR: SEE SPEC NOTICES.

CAUTION

DISUSED RWY (TWY E)
NTH OF RWY 21 THR.

CATEGORY	A	B	C	D
S-I VOR/DME	680 (662-3.8)			
CIRCLING *	800 (782-2.4)		890 (872-4.0)	
ALTERNATE	(1282-4.4)		(1372-7.0)	

Changes: FROM SUP H85/19, COORD FMT.

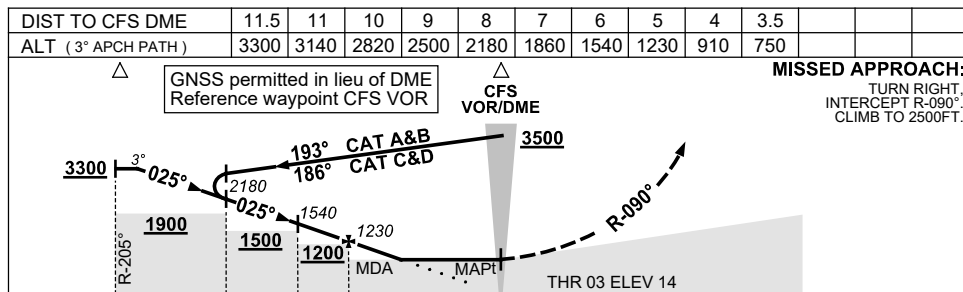
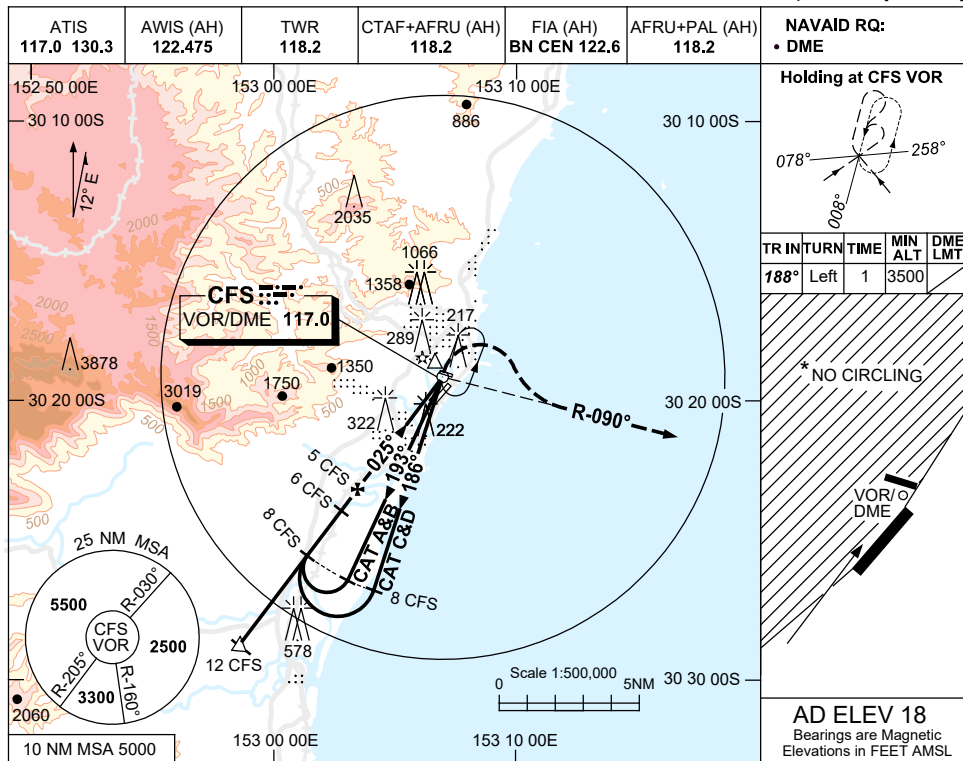
CFSV003-162

USE QNH

VOR RWY 03

27 FEB 2020

COFFS HARBOUR, NSW (YCFS)



CATEGORY	A	B	C	D
S-I VOR/DME	750 (732-4.2)			
CIRCLING *	800 (782-2.4)	890 (872-4.0)	890 (872-5.0)	
ALTERNATE	(1282-4.4)	(1372-6.0)	(1372-7.0)	

- NOTES**
- MAX IAS:
INITIAL : 190KT.
HOLDING: 210KT.
 - * NO CIRCLING
W OF RWY 03/21.
 - COLOUR:** SEE SPEC NOTICES.
- CAUTION**
DISUSED RWY (TWY E)
NTH OF RWY 21 THR.

Changes: FROM SUP H85/19, COORD FMT.

CFSV004-162