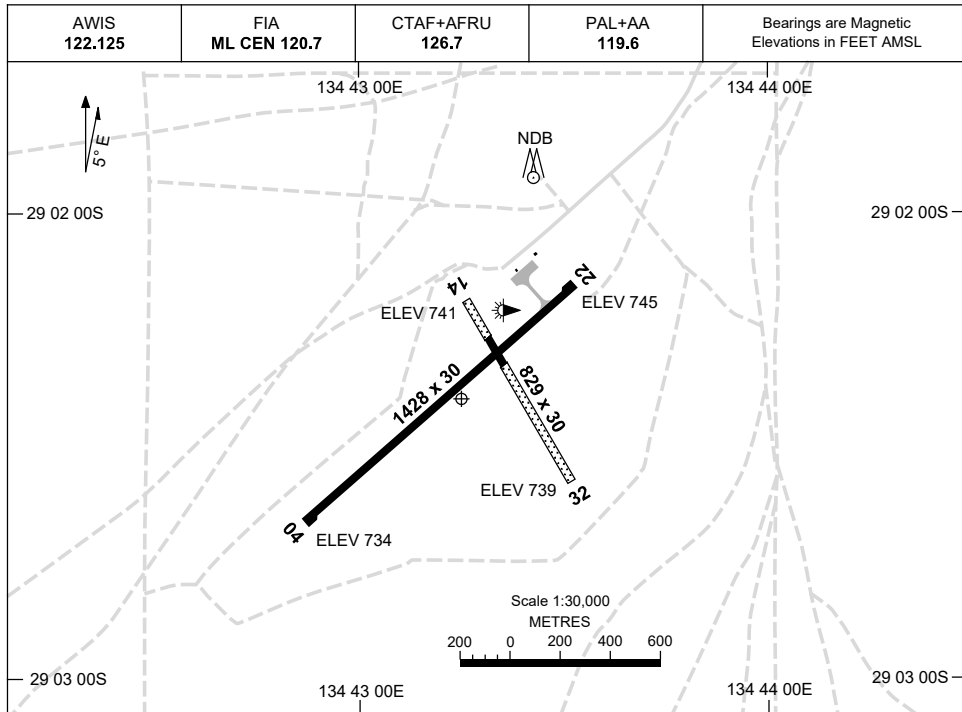


16 JUN 2022

AD ELEV 745
29 02 24S 134 43 15E

AERODROME CHART
COOBER PEDY, SA (YCBP)



	AERODROME LIGHTING	
RWY	TAXIWAY : BLUE EDGE RL : PAL+AA 119.6 , PTBL IN EMERG	
04 <small>043</small>	LIRL	
<small>223</small> 22	LIRL	
14 <small>145</small>	NIL	
<small>325</small> 32	NIL	

NOTES

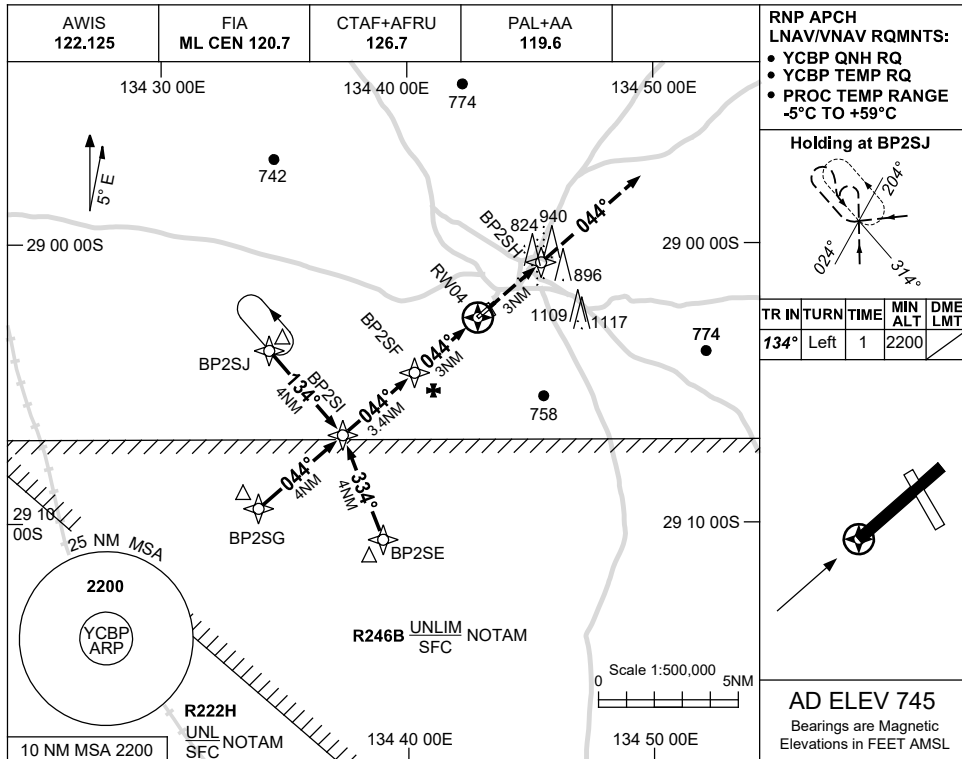
1. AWIS RQ ONE-SECOND PULSE TO ACTIVATE.
2. FIA FREQ 120.7 AVBL 7000FT.

USE QNH

RNP RWY 04

COOBER PEDY, SA (YCBP)

1 DEC 2022

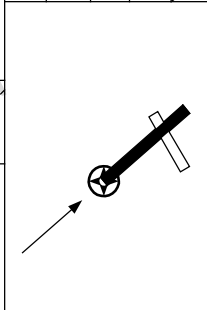


RNP APCH LNAV/VNAV RQMTS:

- YCBP QNH RQ
- YCBP TEMP RQ
- PROC TEMP RANGE -5°C TO +59°C

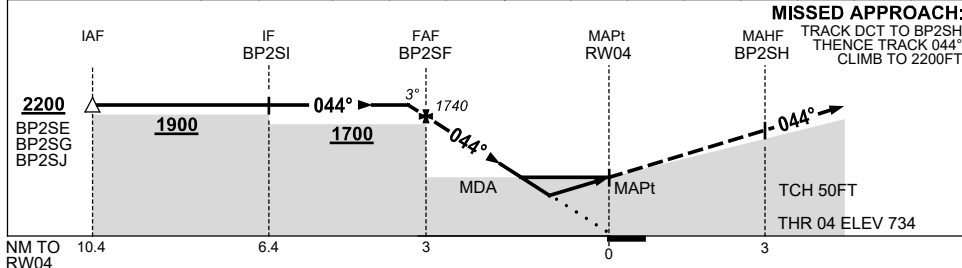
Holding at BP2SJ

TR	IN	TURN	TIME	MIN ALT	DME LMT
134°	Left	1	2200		



AD ELEV 745
Bearings are Magnetic
Elevations in FEET AMSL

NM TO NEXT WPT	1.4	BP2SF	2	1.5	0.9	RW04				
ALT (3° APCH PATH)	2200	1740	1420	1270	1080					



NOTES

CATEGORY	A	B	C	D
LNAV/VNAV		1080 (346-1.9)		NOT APPLICABLE
LNAV		1270 (536-3.0)		
CIRCLING	1390 (645-2.4)		1620 (875-4.0)	
ALTERNATE	(1145-4.4)		(1375-6.0)	

1. MAX IAS: INITIAL : 180KT.
2. PROC NOT AVBL WHEN R246B ACTIVE.

Changes: CHART TITLE, PBN SPECIFICATION BOX.

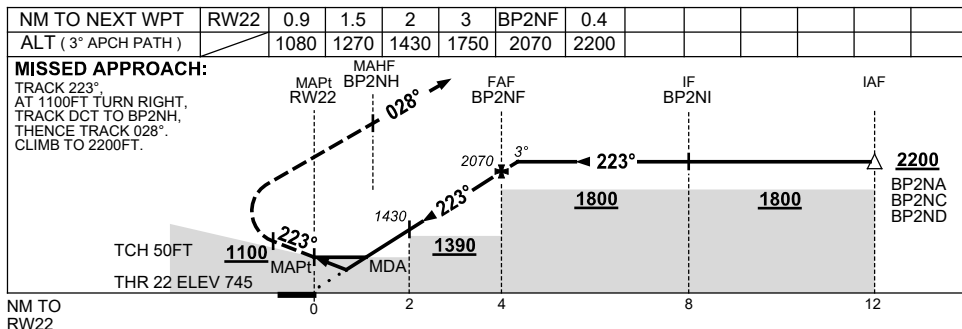
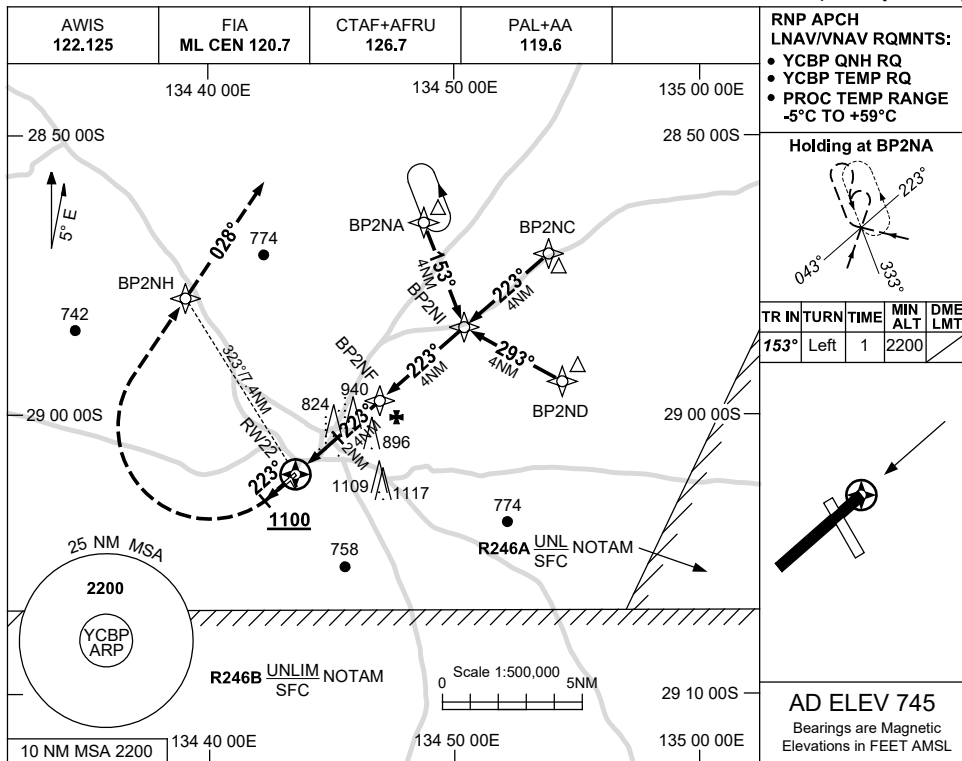
CBPGN01-173

USE QNH

RNP RWY 22

COOBER PEDY, SA (YCBP)

1 DEC 2022



NOTES

CATEGORY	A	B	C	D
LNAV/VNAV		1080 (335-1.9)		NOT APPLICABLE
LNAV		1270 (525-3.0)		
CIRCLING	1390 (645-2.4)		1620 (875-4.0)	
ALTERNATE	(1145-4.4)		(1375-6.0)	

1. MAX IAS: INITIAL : 210KT.

Changes: CHART TITLE, PBN SPECIFICATION BOX.

CBPGN02-173

