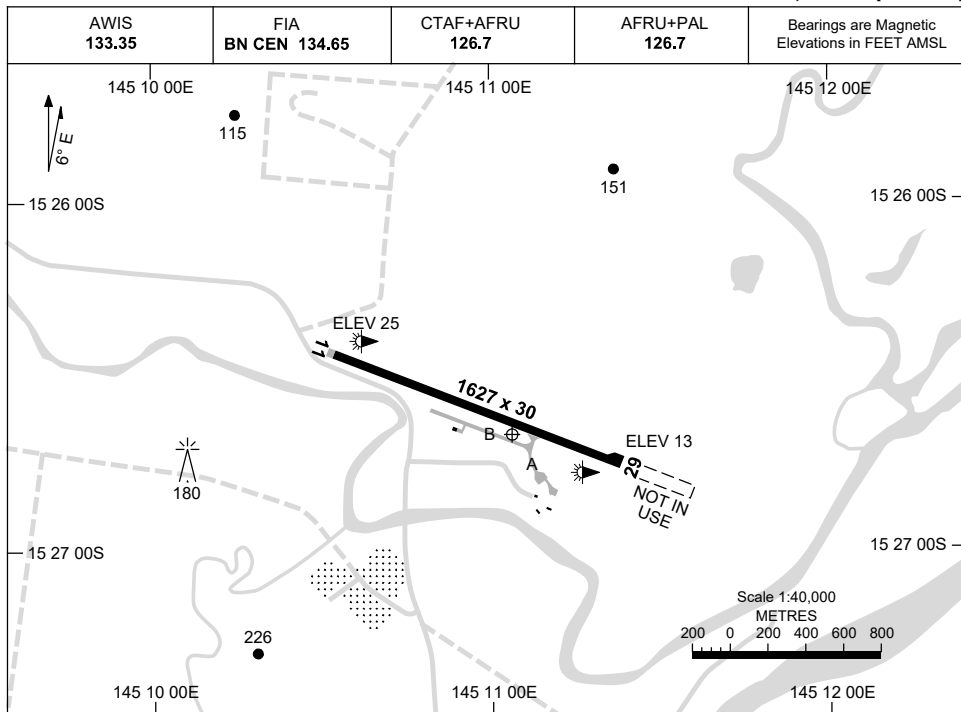


8 SEP 2022

AD ELEV 26  
15 26 41S 145 11 04E

AERODROME CHART  
**COOKTOWN, QLD (YCKN)**



	<b>AERODROME INFORMATION</b>
<b>RWY</b>	TAXIWAY : BLUE EDGE RL : AFRU+PAL 126.7 , SDBY (15 SEC)
<b>11</b> <sup>105</sup> <b>29</b> <sup>285</sup>	LIRL LIRL

**NOTES**

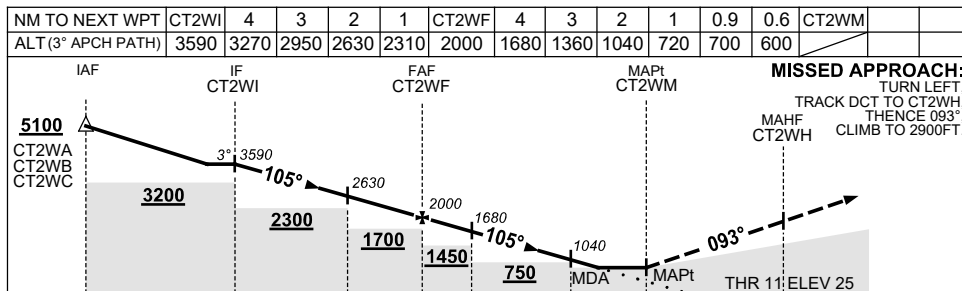
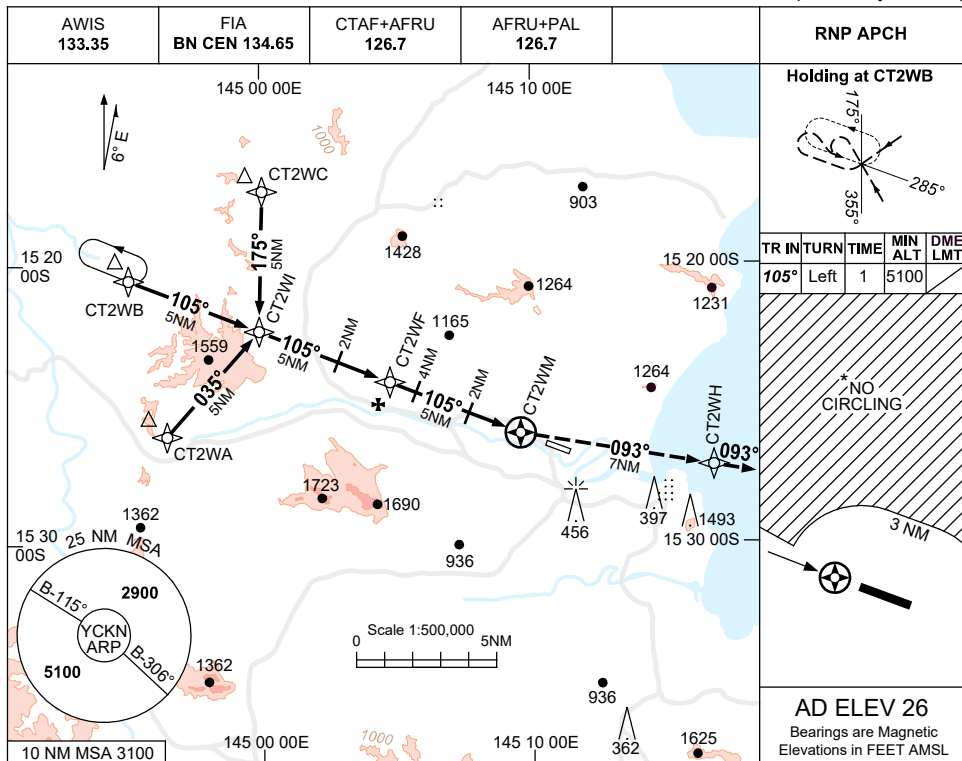
1. AWIS REQUIRES 1 SEC TRANSMISSION TO ACTIVATE.

USE QNH

RNP RWY 11

1 DEC 2022

COOKTOWN, QLD (YCKN)



**MISSED APPROACH:**  
 TURN LEFT, TRACK DCT TO CT2WH, THEN 093°, CLIMB TO 2900FT.  
 MAHF CT2WH

**NOTES**

- MAX IAS: INITIAL : 210KT.
- NO CIRCLING IN SECTOR NORTHWEST OF RWY 11 & RWY 29 BEYOND 3NM.
- MIN MAP GRAD 3.1% TO 1100FT, THEN 2.5%.
- COLOUR: SEE SPEC NOTICES.

CATEGORY	A	B	C	D
LNAV (2.5% MAP)	700 (674-3.8)			NOT APPLICABLE
LNAV (3.1% MAP)#	600 (574-3.2)			
CIRCLING *	1080 (1054-2.4)		1500(1474-4.0)	
ALTERNATE	(1554-4.4)		(1974-6.0)	

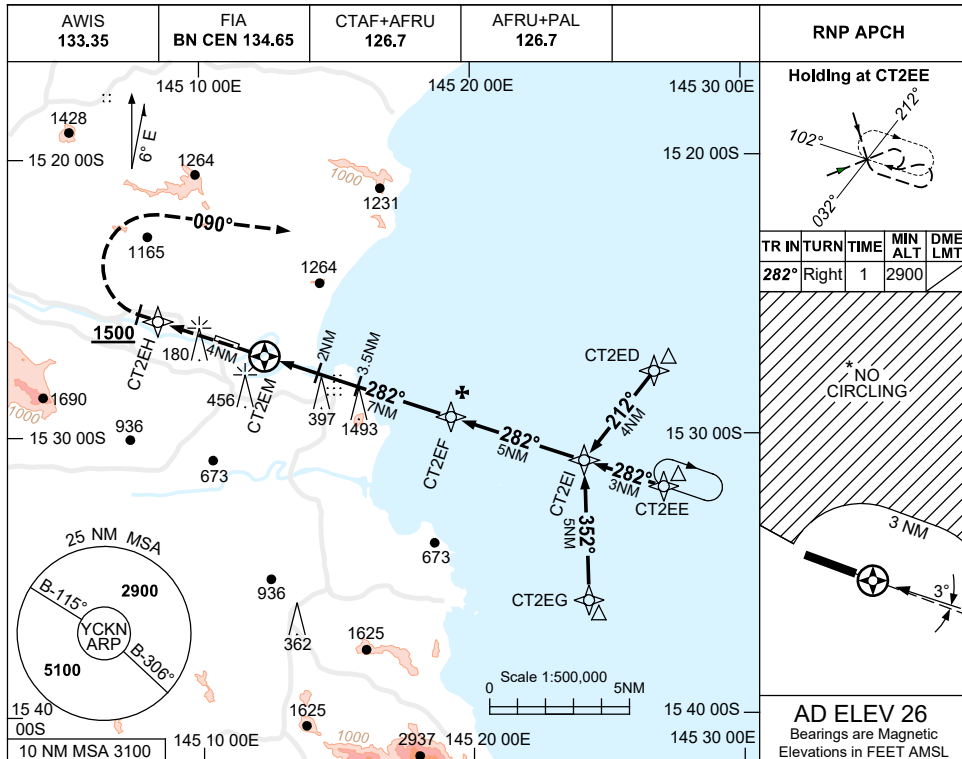
Changes: DIST/ALT TABLE.

CKNGN01-173

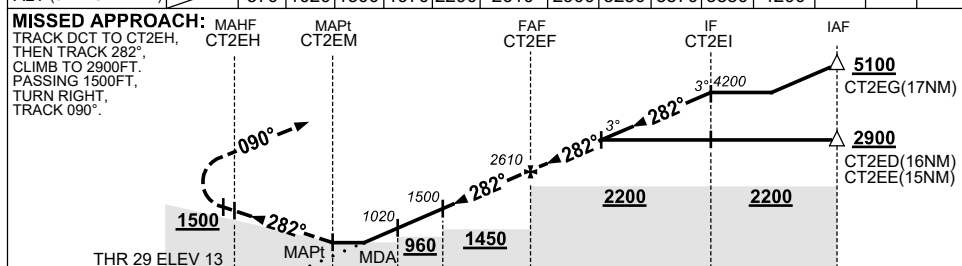
USE QNH

RNP RWY 29  
**COOKTOWN, QLD (YCKN)**

24 MAR 2022



NM TO NEXT WPT	CT2EM	0.6	2	3.5	5	6	CT2EF	0.9	2	3	4	CT2EI		
ALT (3° APCH PATH)		570	1020	1500	1970	2290	2610	2900	3250	3570	3880	4200		



NM TO CT2EM

CATEGORY	A	B	C	D
LNAV	590 (577-3.3)			NOT APPLICABLE
CIRCLING *	1080 (1054-2.4)		1500 (1474-4.0)	
ALTERNATE	(1554-4.4)		(1974-6.0)	

- NOTES**
- MAX IAS: INITIAL : 210KT.
  - NO CIRCLING IN SECTOR NORTHEAST OF RWY 11 & RWY 29 BEYOND 3NM.
  - COLOUR: SEE SPEC NOTICES.

Changes: CHART TITLE, PBN SPECIFICATION BOX, WPT NAMES, Editorial.

CKNGN02-170