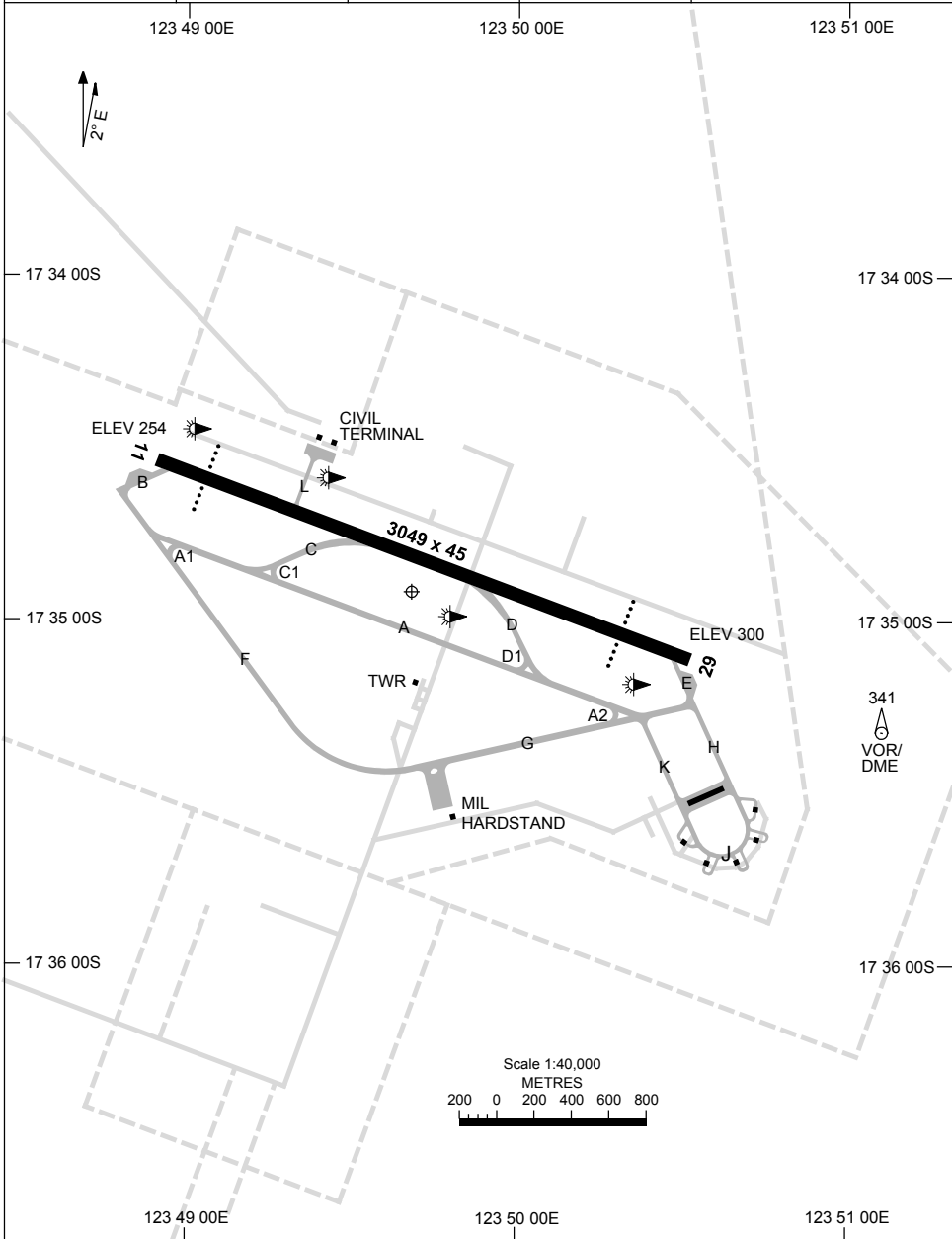


25 MAR 2021

AD ELEV 300  
17 34 53S 123 49 42E

AERODROME CHART - Page 1  
**CURTIN, WA (YCIN)**

FIA BN CEN 122.1	TWR 118.3	CTAF+AFRU (AH) 126.7	PAL 120.35	Bearings are Magnetic Elevations in FEET AMSL
---------------------	--------------	-------------------------	---------------	--



Changes: WDI RELOCATION, Editorial.

CINAD01-166

15 JUN 2023

AD ELEV 300  
17 34 53S 123 49 42E

AERODROME CHART - Page 2  
**CURTIN, WA (YGIN)**

FIA BN CEN 122.1	TWR 118.3	CTAF+AFRU (AH) 126.7	PAL 120.35	Bearings are Magnetic Elevations in FEET AMSL
<b>AERODROME LIGHTING</b>				
<b>RWY</b>	TAXIWAY : GREEN CENTRELINE RL : PAL 120.35 , SDBY			
<b>11</b> <sup>108</sup> <sup>288</sup> <b>29</b>	PAPI 3.0° 48FT MIRL PAPI 3.0° 48FT MIRL			

**NOTES**

1. RWY, TWY LIGHTING AVBL BY ARRANGEMENT WITH AD OPR.
2. PAPI RWY 11 & 29 NOT AVBL BEYOND 2.5NM HJ.  
PAPI RWY 11 REDUCED INTENSITY HN.  
PAPI RWY 29 INTENSITY FIXED. UNABLE TO BE REDUCED HN.
3. AWIS (PHONE) 08 6216 2609

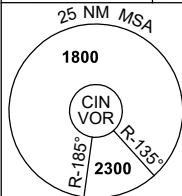
Changes: NOTES.

CINAD02-175

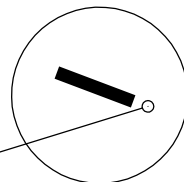
# DME or GNSS ARRIVAL PROCEDURES CURTIN, WA (YCIN)

7 NOV 2019

FIA BN CEN 122.1	TWR 118.3	CTAF+AFRU (AH) 126.7	PAL 120.35	Bearings are Magnetic Elevations in FEET AMSL
---------------------	--------------	-------------------------	---------------	--

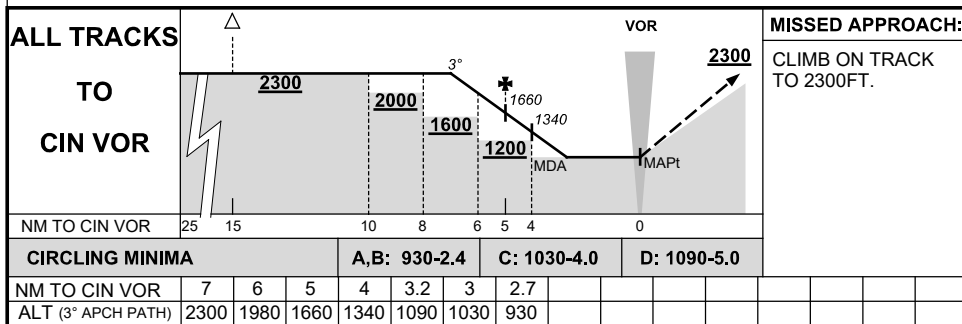


**DME USING CIN DME  
REFERENCE WAYPOINT CIN VOR**  
AWIS (PHONE) 08 6216 2609



10 NM MSA 1600

AD ELEV 300

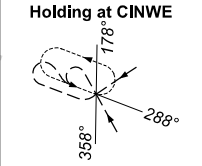
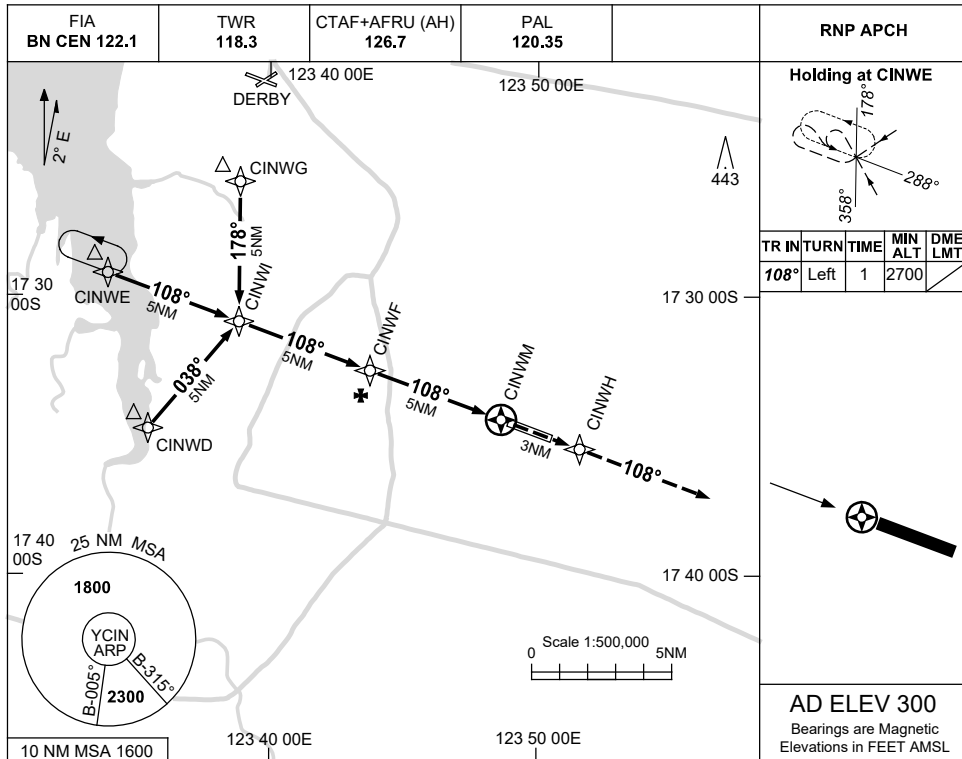


Changes: PAL, CTAF-AFRU.

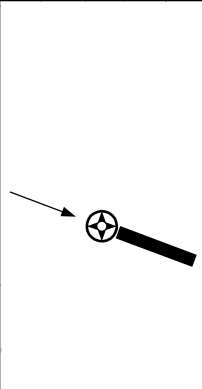
USE QNH

RNP RWY 11  
CURTIN, WA (YGIN)

8 SEP 2022

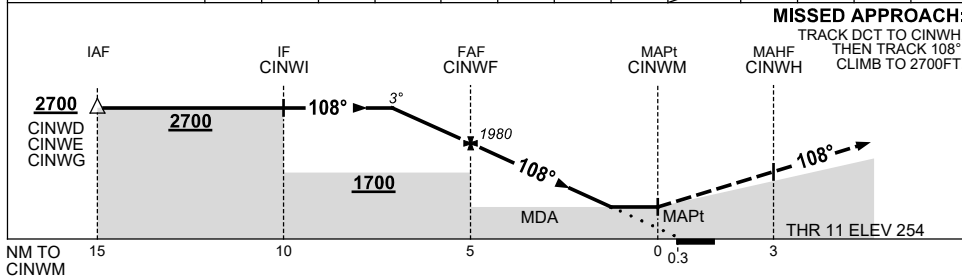


TR IN	TURN	TIME	MIN ALT	DME LMT
108°	Left	1	2700	



**AD ELEV 300**  
Bearings are Magnetic  
Elevations in FEET AMSL

NM TO NEXT WPT	2.3	2	1	CINWF	4	3	2	1.3	CINWM			
ALT (3° APCH PATH)	2700	2620	2300	1980	1660	1340	1020	810				



**MISSED APPROACH:**  
TRACK DCT TO CINWH,  
THEN TRACK 108°.  
CLIMB TO 2700FT.

**NOTES**

CATEGORY	A	B	C	D
LNAV	810 (556-3.2)			
CIRCLING	930 (630-2.4)	1030 (730-4.0)	1090 (790-5.0)	
ALTERNATE	(1130-4.4)	(1230-6.0)	(1290-7.0)	

- MAX IAS:  
INITIAL : 210KT.
- YDBY NDB HOLDING  
PATTERN UNDERLIES  
CINWE AND CINWG.
- AWIS (PHONE)  
08 6216 2609

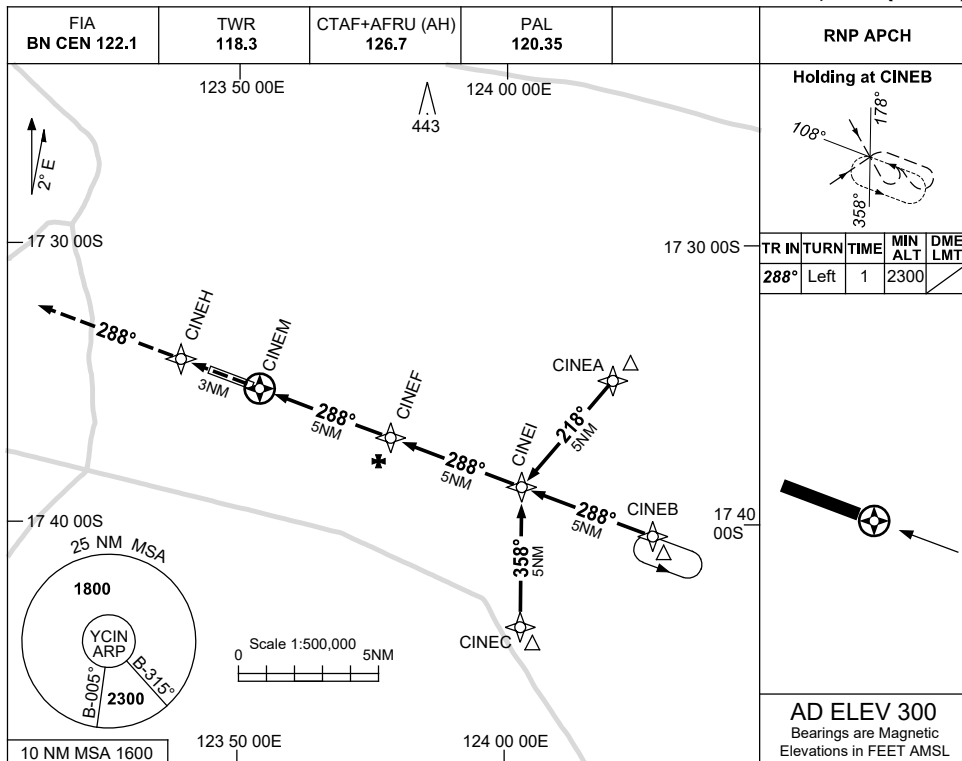
Changes: CHART TITLE, PBN SPECIFICATION BOX.

CINGN01-172

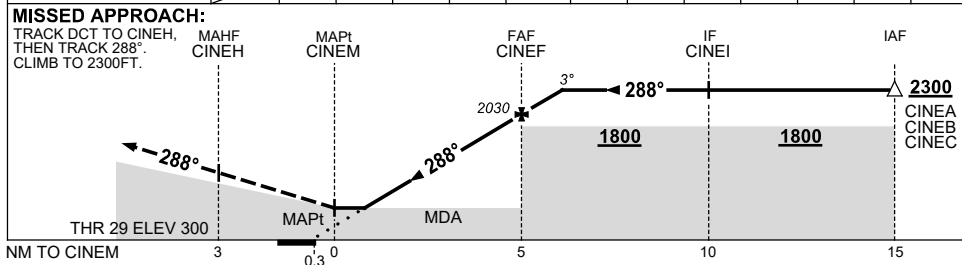
USE QNH

RNP RWY 29  
CURTIN, WA (YGIN)

8 SEP 2022



NM TO NEXT WPT	CINEM	1.4	2	3	4	CINEF	0.9				
ALT (3° APCH PATH)		880	1070	1390	1710	2030	2300				



NOTES

- MAX IAS:  
INITIAL : 210KT.
- AWIS (PHONE)  
08 6216 2609

CATEGORY	A	B	C	D
LNAV	880 (580-3.3)			
CIRCLING	930 (630-2.4)	1030 (730-4.0)	1090 (790-5.0)	
ALTERNATE	(1130-4.4)	(1230-6.0)	(1290-7.0)	

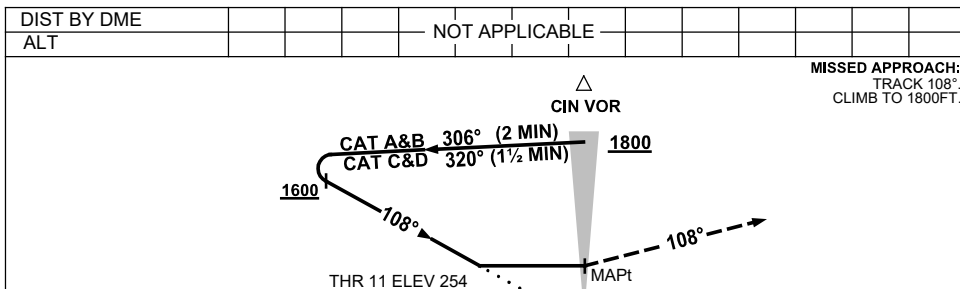
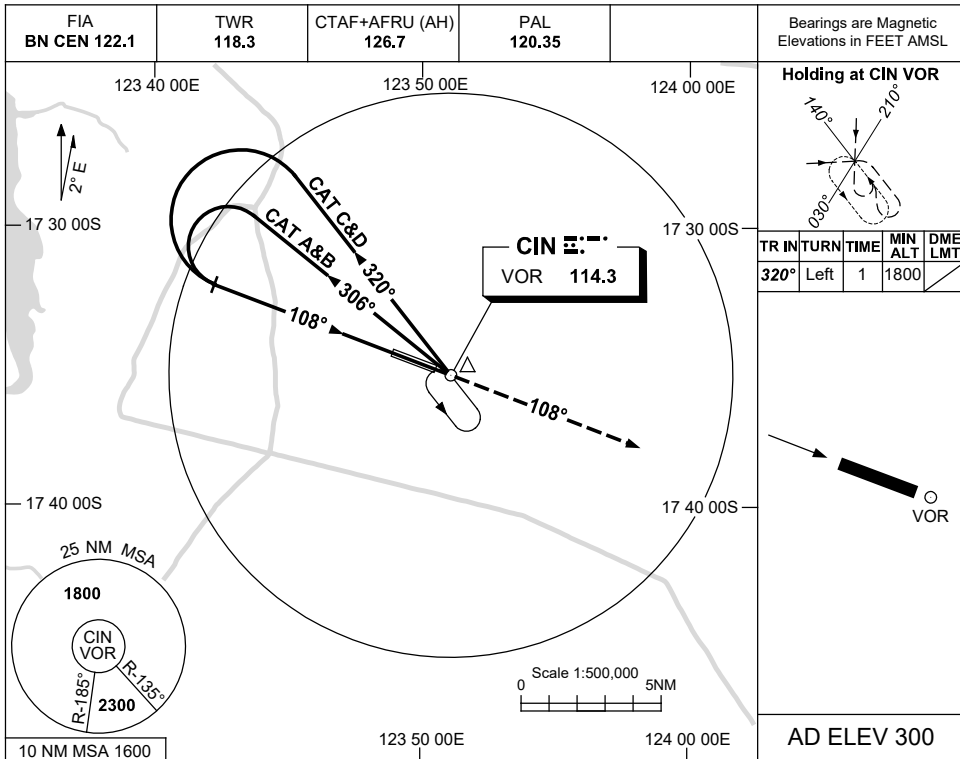
Changes: CHART TITLE, PBN SPECIFICATION BOX.

CINGN02-172

USE QNH

VOR-Y RWY 11  
CURTIN, WA (YGIN)

7 NOV 2019



**NOTES**

CATEGORY	A	B	C	D
S-I VOR	<b>930 (676-3.8)</b>			
CIRCLING	<b>930 (630-2.4)</b>	<b>1030 (730-4.0)</b>	<b>1090 (790-5.0)</b>	
ALTERNATE	(1130-4.4)	(1230-6.0)	(1290-7.0)	

1. MAX IAS:  
INITIAL : 210KT.
2. AWIS (PHONE)  
08 6216 2609

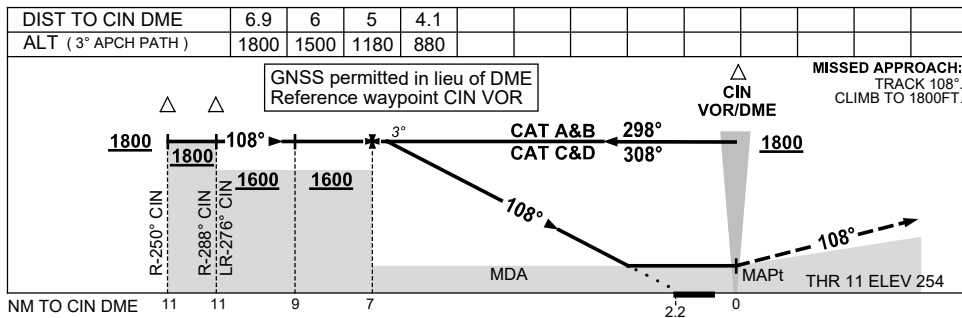
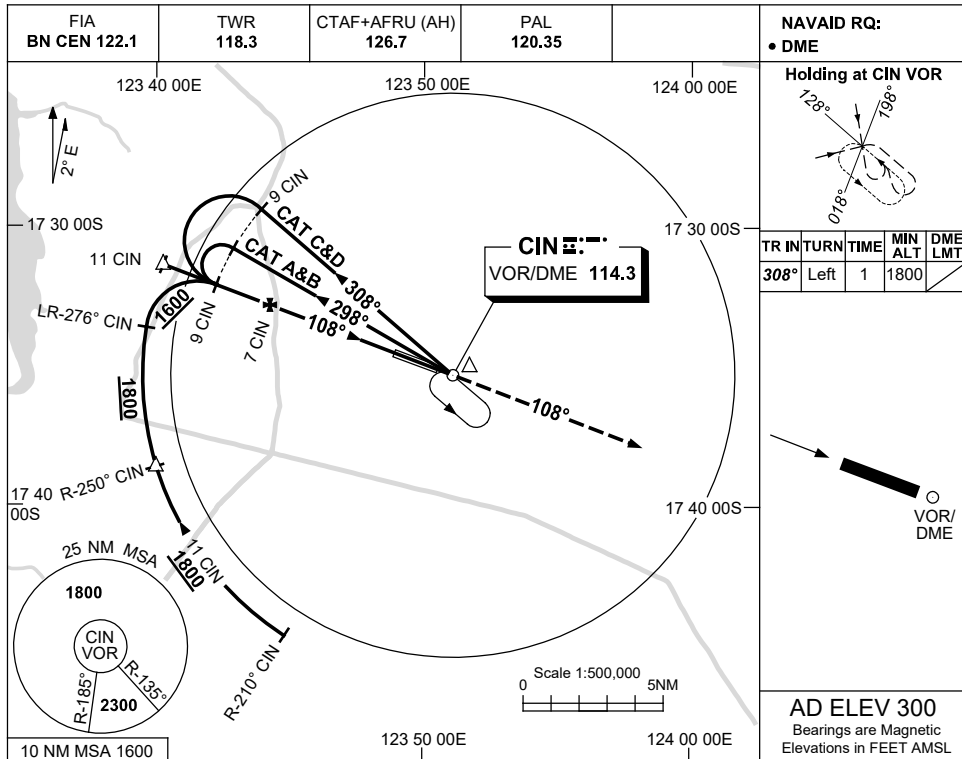
Changes: PAL, CTAF-AFRU.

CINVO01-161

USE QNH

VOR-Z RWY 11  
CURTIN, WA (YGIN)

7 NOV 2019



NOTES

- MAX IAS: INITIAL : 210KT.
- AWIS (PHONE) 08 6216 2609

CATEGORY	A	B	C	D
S-I VOR/DME	880 (626-3.6)			
CIRCLING	930 (630-2.4)	1030 (730-4.0)	1090 (790-5.0)	
ALTERNATE	(1130-4.4)	(1230-6.0)	(1290-7.0)	

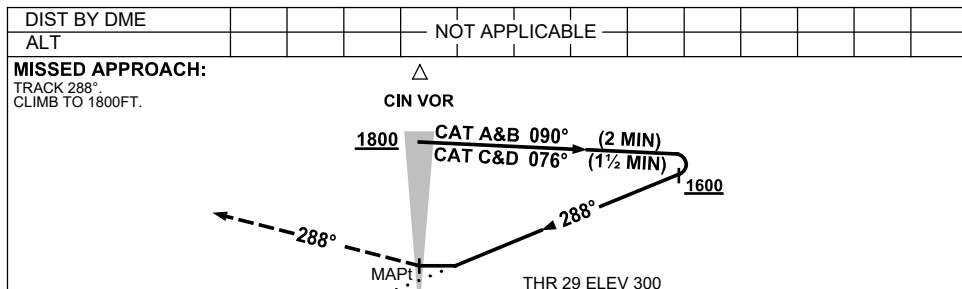
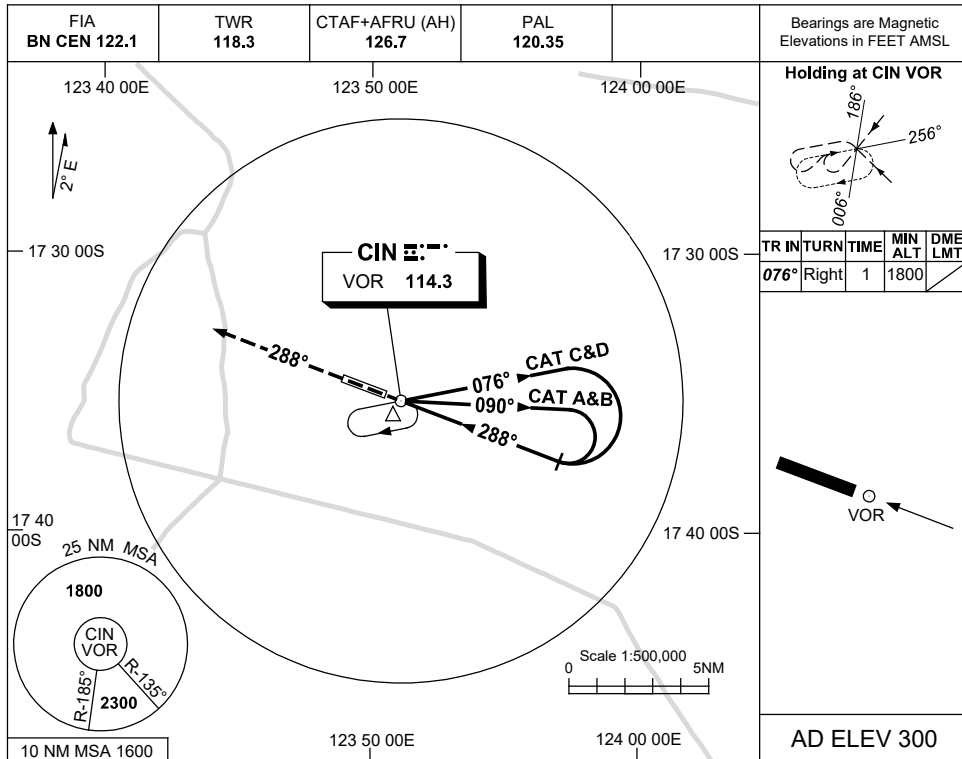
Changes: PAL, CTAF-AFRU.

CINVO02-161

USE QNH

VOR-Y RWY 29  
**CURTIN, WA (YCIN)**

7 NOV 2019



**NOTES**

CATEGORY	A	B	C	D
S-I VOR	<b>930 (630-3.6)</b>			
CIRCLING	<b>930 (630-2.4)</b>	<b>1030 (730-4.0)</b>	<b>1090 (790-5.0)</b>	
ALTERNATE	(1130-4.4)	(1230-6.0)	(1290-7.0)	

1. MAX IAS:  
INITIAL : 210KT.
2. AWIS (PHONE)  
08 6216 2609

Changes: PAL, CTAF-AFRU.

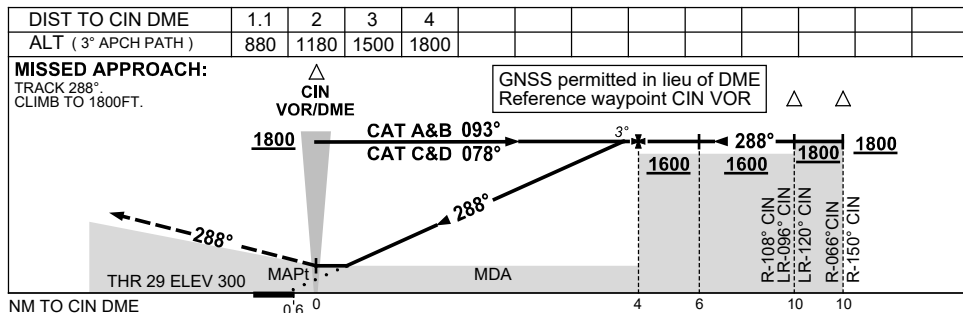
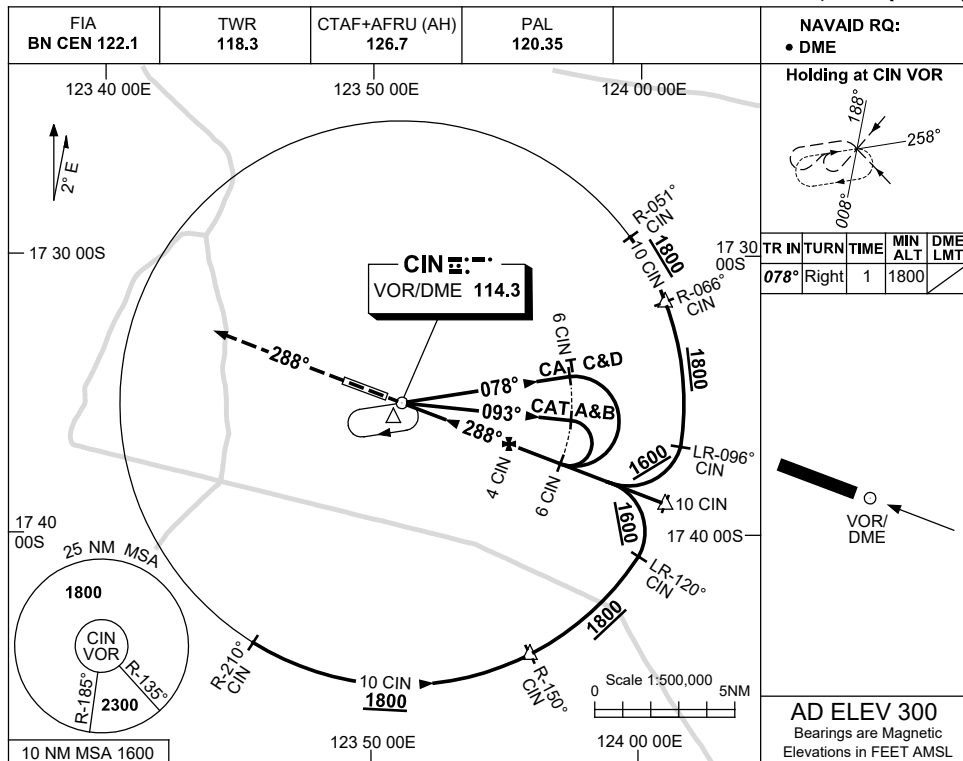
CINVO03-161



USE QNH

VOR-Z RWY 29  
CURTIN, WA (YCIN)

7 NOV 2019



**NOTES**

CATEGORY	A	B	C	D
S-I VOR/DME	880 (580-3.3)			
CIRCLING	930 (630-2.4)	1030 (730-4.0)	1090 (790-5.0)	
ALTERNATE	(1130-4.4)	(1230-6.0)	(1290-7.0)	

- MAX IAS:  
INITIAL : 210KT.
- AWIS (PHONE)  
08 6216 2609

Changes: PAL, CTAF-AFRU.

CINVO04-161