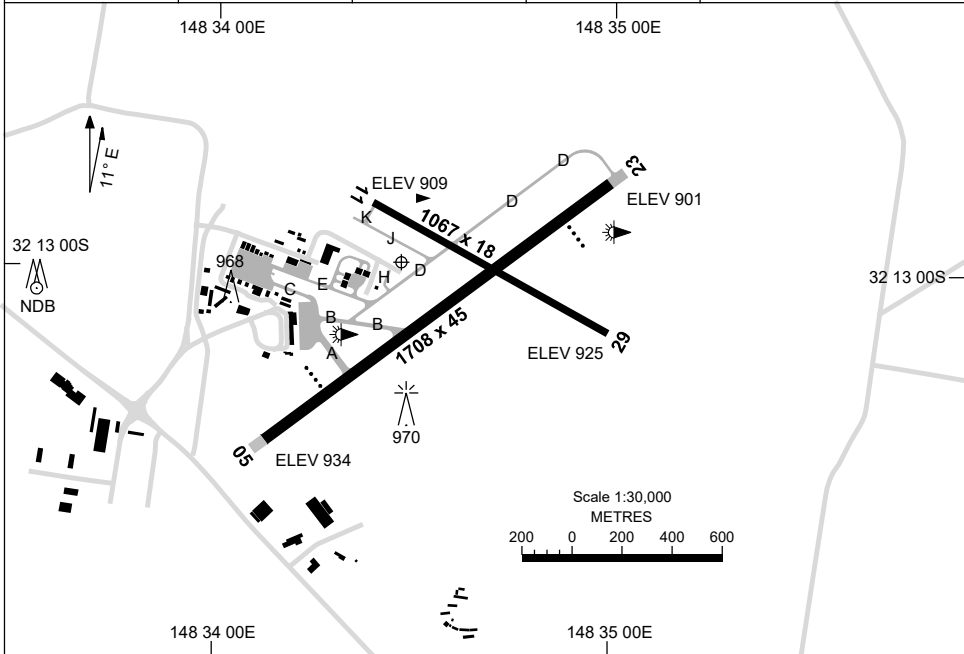


21 MAR 2024

AD ELEV 935  
32 13 00S 148 34 29E

AERODROME CHART  
**DUBBO, NSW (YSDU)**

AWIS 122.975	FIA ML CEN 123.9	CTAF+AFRU 134.0	PAL 121.3	Bearings are Magnetic Elevations in FEET AMSL
-----------------	---------------------	--------------------	--------------	--



RWY	AERODROME LIGHTING	
		TAXIWAY : BLUE EDGE , TWY A&B RL : PAL 121.3 , SDBY (9 SEC)
<b>05</b> <sup>043</sup>	PAPI 3.0° 46FT LIRL	
<sup>223</sup> <b>23</b>	PAPI 3.0° 46FT LIRL	
<b>11</b> <sup>108</sup>	NIL	
<sup>288</sup> <b>29</b>	NIL	

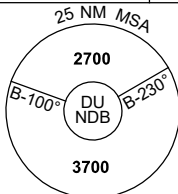
**NOTES**

1. AWIS REQUIRES 1 SEC PULSE TO ACTIVATE.

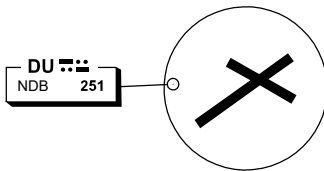
# GNSS ARRIVAL PROCEDURES DUBBO, NSW (YSDU)

24 MAR 2022

AWIS 122.975	FIA ML CEN 123.9	CTAF+AFRU 134.0	PAL 121.3		Bearings are Magnetic Elevations in FEET AMSL
-----------------	---------------------	--------------------	--------------	--	--



## REFERENCE WAYPOINT DU NDB



10 NM MSA 3000

AD ELEV 935

### SECTOR A

**MISSED APPROACH:**  
CLIMB ON TRACK TO 3700FT.

NM TO DU NDB	25	15	14	5	4	3	2.5	2.1	2	1.6				
<b>CIRCLING MINIMA</b>	<b>A,B: 1730-2.4</b>		<b>C: 1880-4.0</b>		<b>D: 1990-5.0</b>									
NM TO DU NDB	7.8	7	6	5	4	3	2.5	2.1	2	1.6				
ALT (3° APCH PATH)	3700	3440	3120	2800	2480	2160	1990	1880	1850	1730				

### SECTOR B

**MISSED APPROACH:**  
CLIMB ON TRACK TO 3700FT.

NM TO DU NDB	25	16	10	6	0									
<b>CIRCLING MINIMA</b>	<b>A,B: 1730-2.4</b>		<b>C: 1880-4.0</b>		<b>D: 1990-5.0</b>									
NM TO DU NDB	9.1	8	7	6	5	4	3.7	3.4	3	2.9				
ALT (3° APCH PATH)	3700	3350	3030	2710	2390	2080	1990	1880	1760	1730				

### SECTOR C

**MISSED APPROACH:**  
CLIMB ON TRACK TO 3700FT.

NM TO DU NDB	25	22	16	6	0									
<b>CIRCLING MINIMA</b>	<b>A,B: 1730-2.4</b>		<b>C: 1880-4.0</b>		<b>D: 1990-5.0</b>									
NM TO DU NDB	9.1	8	7	6	5	4	3.7	3.4	3	2.9				
ALT (3° APCH PATH)	3700	3350	3030	2710	2390	2080	1990	1880	1760	1730				

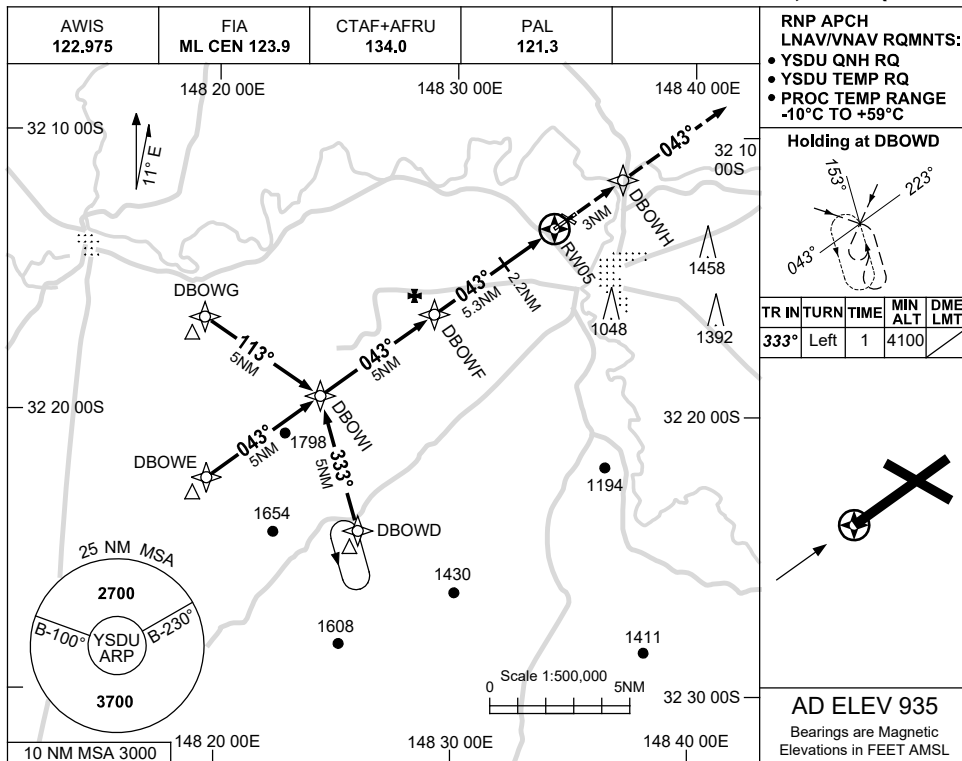
Changes: CAT D CIRCLING MINIMA, DIST/ALT TABLE.

SDUDG01-170

USE QNH

RNP RWY 05  
**DUBBO, NSW (YSDU)**

15 JUN 2023

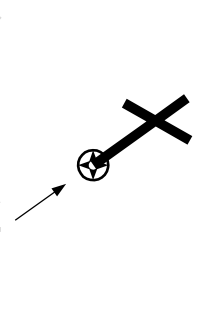


**RNP APCH LNAV/VNAV RQMNTS:**

- YSDU QNH RQ
- YSDU TEMP RQ
- PROC TEMP RANGE -10°C TO +59°C

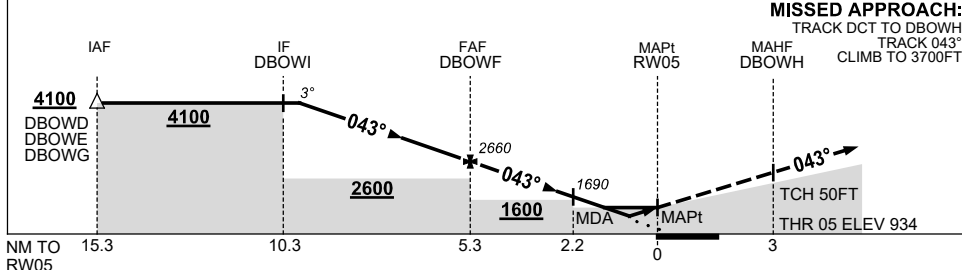
**Holding at DBOWH**

TR IN	TURN	TIME	MIN ALT	DME LMT
333°	Left	1	4100	



**AD ELEV 935**  
 Bearings are Magnetic  
 Elevations in FEET AMSL

NM TO NEXT WPT	4.5	4	3	2	1	DBOWF	4	3	2.2	1.7	1.2	RW05
ALT (3° APCH PATH)	4100	3940	3620	3300	2980	2660	2260	1940	1690	1530	1350	



**NOTES**

CATEGORY	A	B	C	D
LNAV/VNAV		1350 (416-2.3)		
LNAV		1530 (595-3.4)		
CIRCLING	1730 (795-2.4)		1880 (945-4.0)	1990 (1055-5.0)
ALTERNATE	(1295-4.4)		(1445-6.0)	(1555-7.0)

1. MAX IAS:  
 INITIAL : 210KT.

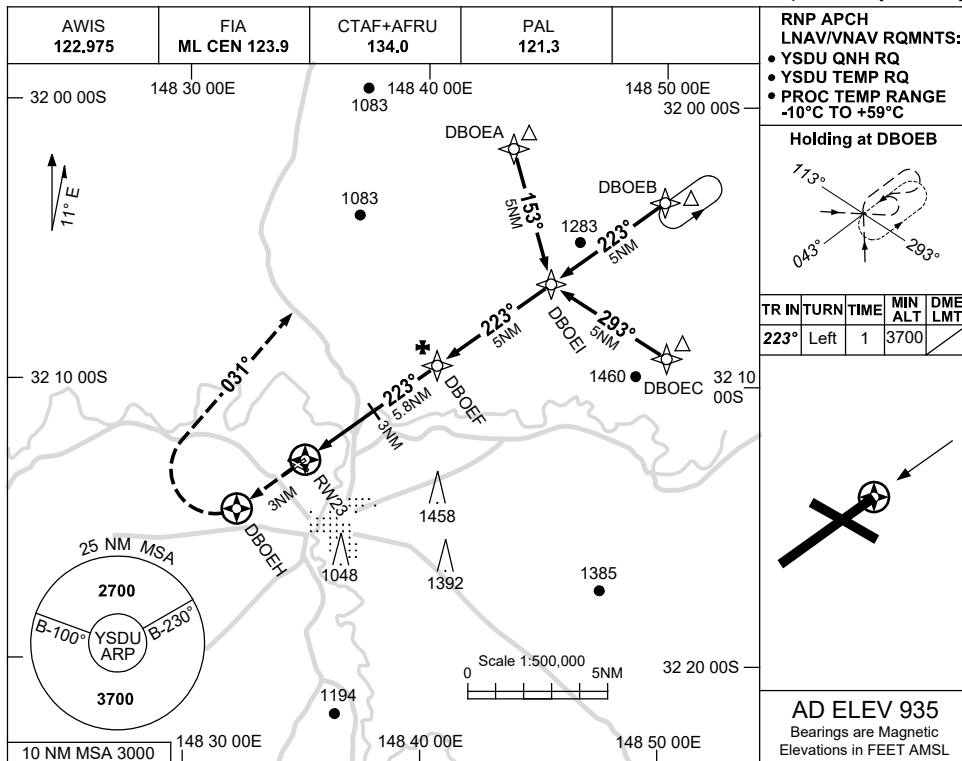
Changes: CHART TITLE, PBN SPECIFICATION BOX, Editorial.

SDUGN01-175

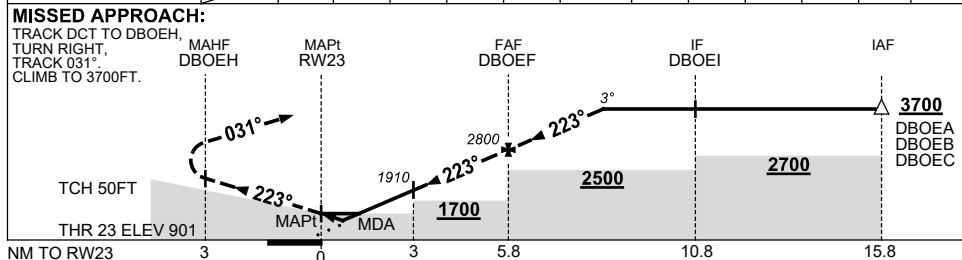
USE QNH

RNP RWY 23  
**DUBBO, NSW (YSDU)**

15 JUN 2023



NM TO NEXT WPT	RW23	1	1.7	2	3	4	DBOEF	1	2	2.8		
ALT (3° APCH PATH)		1280	1500	1590	1910	2230	2800	3110	3430	3700		



**NOTES**

1. MAX IAS:  
 INITIAL : 210KT.

CATEGORY	A	B	C	D
LNAV/VNAV		<b>1280</b> (379-2.1)		
LNAV		<b>1500</b> (599-3.4)		
CIRCLING	<b>1730</b> (795-2.4)		<b>1880</b> (945-4.0)	<b>1990</b> (1055-5.0)
ALTERNATE	(1295-4.4)		(1445-6.0)	(1555-7.0)

Changes: CHART TITLE, PBN SPECIFICATION BOX, Editorial.

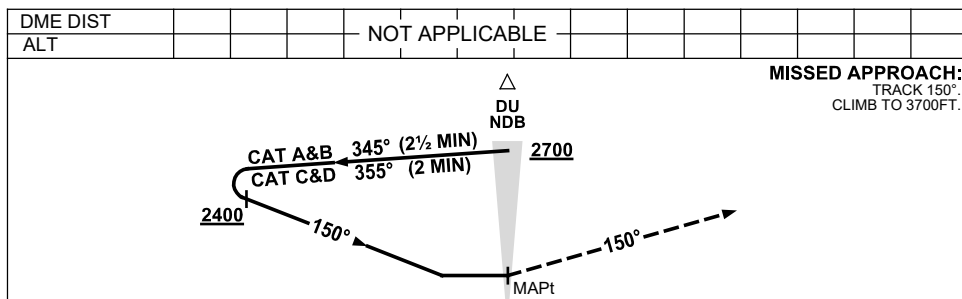
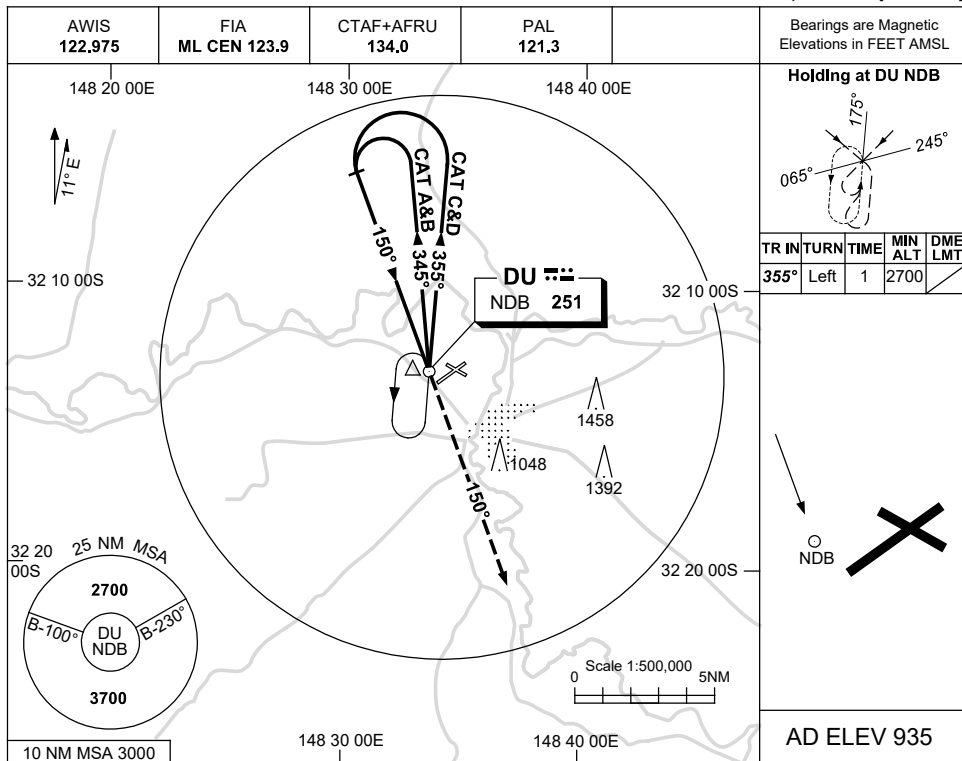
SDUGN02-175

USE QNH

NDB-A

DUBBO, NSW (YSDU)

24 MAR 2022



**NOTES**

- MAX IAS :  
HOLDING: 210KT.  
PROCEDURE: 210KT.

CATEGORY	A	B	C	D
CIRCLING	1730 (795-2.4)	1880 (945-4.0)	1990 (1055-5.0)	
ALTERNATE	(1295-4.4)	(1445-6.0)	(1555-7.0)	

Changes: MINIMA.

SDUNB01-170