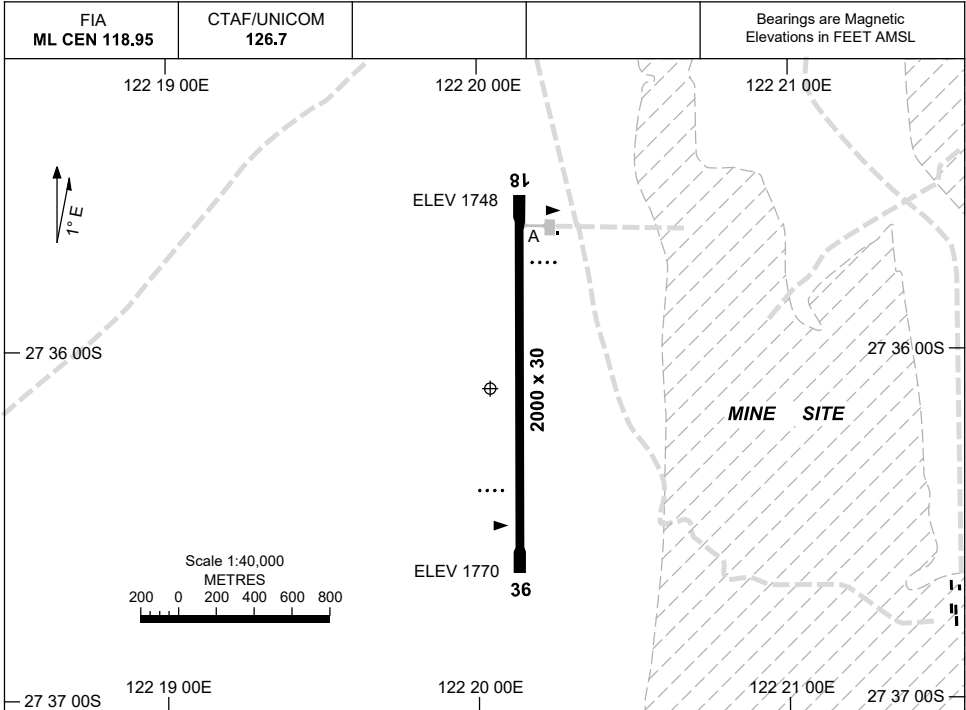


15 JUN 2023

AD ELEV 1770
27 36 07S 122 20 02E

AERODROME CHART
DUKETON GOLD, WA (YDKG)



	AERODROME LIGHTING
RWY	RL : PTBL IN EMERG (60 MIN PN MILL CONTROL: 08 8151 3665)
18 <small>179</small>	PAPI 3.0° 48.5FT PTBL
<small>359</small> 36	PAPI 3.0° 48.5FT PTBL

NOTES

1. PAPI - MANUAL ACTIVATION. 60 MIN PN (MIL CONTROL 08 8151 3665).

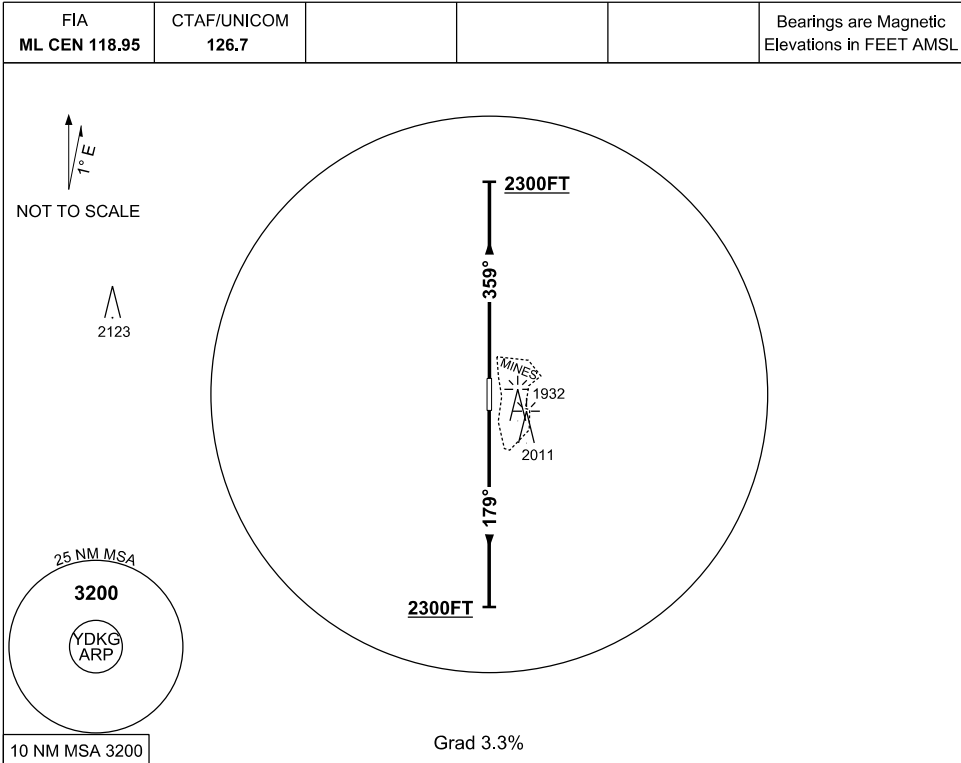
Changes: Editorial.

DKGAD01-175

STANDARD INSTRUMENT DEPARTURE (SID)
 DUKETON GOLD ONE DEPARTURE
DUKETON GOLD, WA (YDKG)

1 DEC 2022

Bearings are Magnetic
 Elevations in FEET AMSL



DUKETON GOLD ONE DEPARTURE

RWY 18

- Track 179°
- At or above 2300FT turn as required
- Intercept flight plan route

RWY 36

- Track 359°
- At or above 2300FT turn as required
- Intercept flight plan route

NOTES

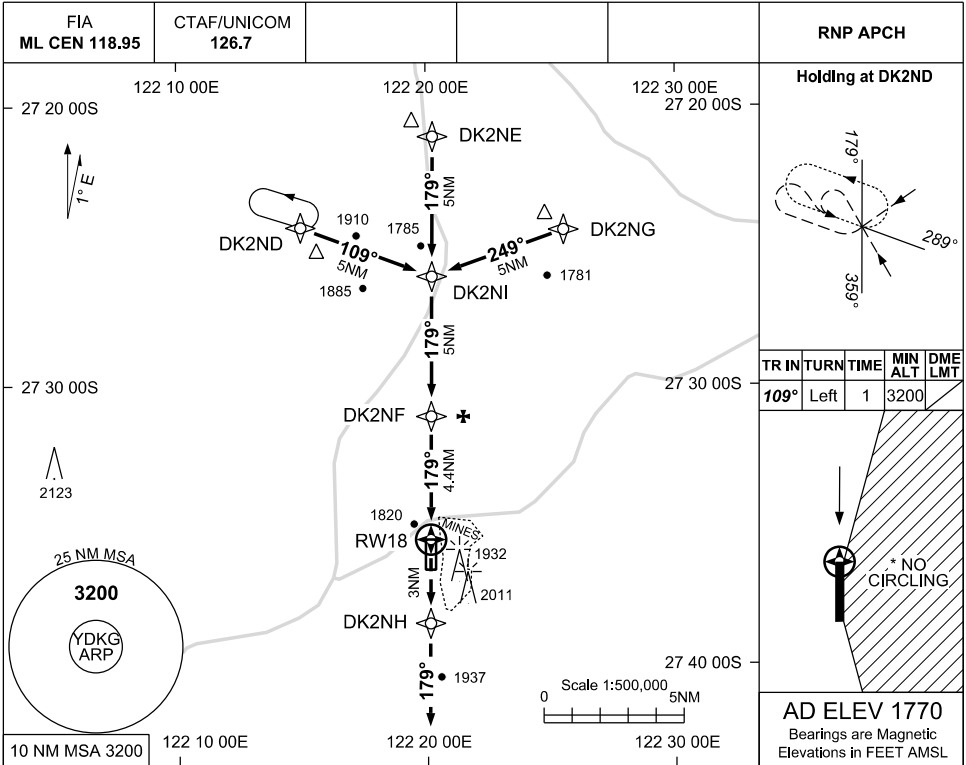
- NIL -

USE QNH

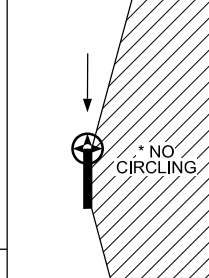
RNP RWY 18

DUKETON GOLD, WA (YDKG)

30 NOV 2023

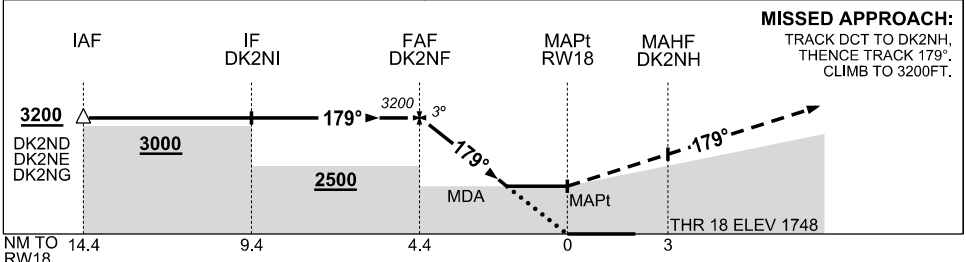


TR IN	TURN	TIME	MIN ALT	DME LMT
109°	Left	1	3200	



AD ELEV 1770
Bearings are Magnetic
Elevations in FEET AMSL

NM TO NEXT WPT	DK2NF	4	3	2	1.6	RW18								
ALT (3° APCH PATH)	3200	3070	2750	2430	2300									



MISSED APPROACH:
TRACK DCT TO DK2NH,
THENCE TRACK 179°.
CLIMB TO 3200FT.

NOTES

- MAX IAS:
INITIAL 210KT
- CAUTION:** CHECK
BLASTING TIMES
WITH A/D OPERATOR
- *3. NO CIRCLING EAST OF
RWY 18/36

CATEGORY	A	B	C	D
LNAV	2300 (552 - 3.1)			NOT AUTHORISED
CIRCLING*	2420 (650 - 2.4)		2540 (770 - 4.0)	
ALTERNATE	(1150 - 4.4)		(1270 - 6.0)	

Changes: CHART TITLE, PBN SPECIFICATION BOX

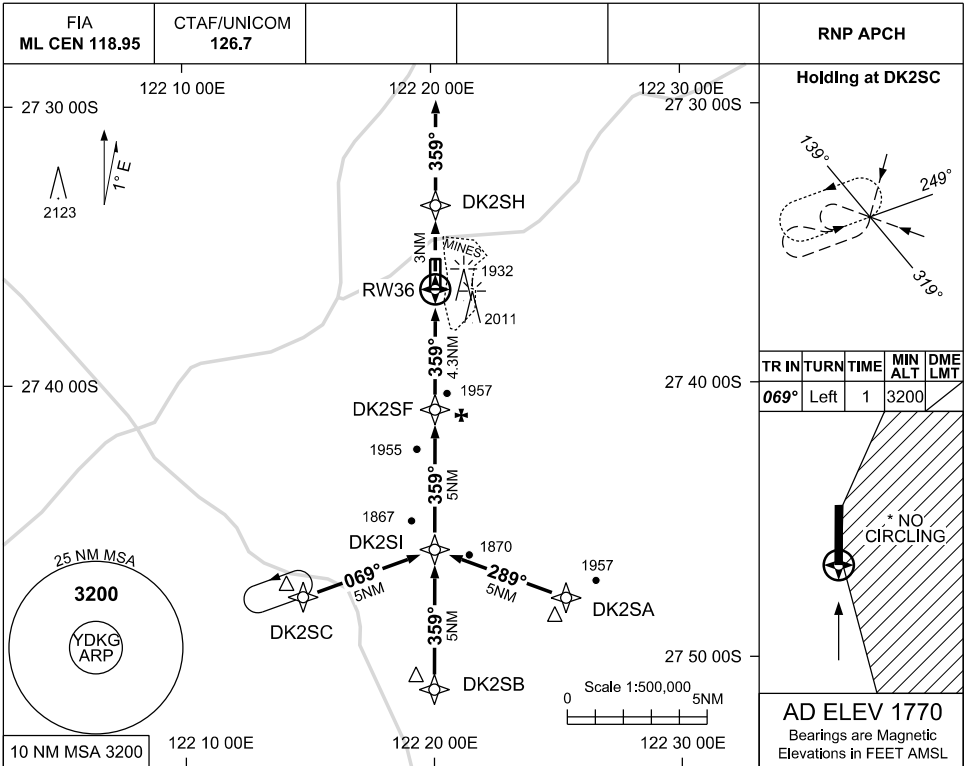
DKGGN01-177

USE QNH

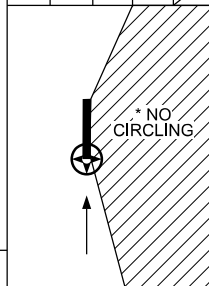
RNP RWY 36

DUKETON GOLD, WA (YDKG)

30 NOV 2023

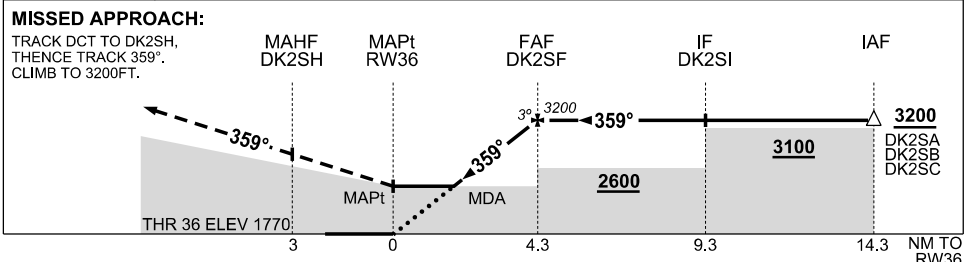


TR	IN	TURN	TIME	MIN	DME
				ALT	LMT
069°		Left	1	3200	



AD ELEV 1770
Bearings are Magnetic
Elevations in FEET AMSL

NM TO NEXT WPT	RW36	1.8	2	3	4	DK2SF								
ALT (3° APCH PATH)		2390	2460	2780	3090	3200								



NOTES

- MAX IAS:
INITIAL 210KT
- CAUTION:** CHECK
BLASTING TIMES
WITH A/D OPERATOR
- *3. NO CIRCLING EAST
OF RWY 18/36

CATEGORY	A	B	C	D
LNAV	2390 (620 - 3.5)			NOT AUTHORISED
CIRCLING*	2420 (650 - 2.4)	2540 (770 - 4.0)		
ALTERNATE	(1150 - 4.4)		(1270 - 6.0)	

Changes: CHART TITLE, PBN SPECIFICATION BOX

DKGGN02-177