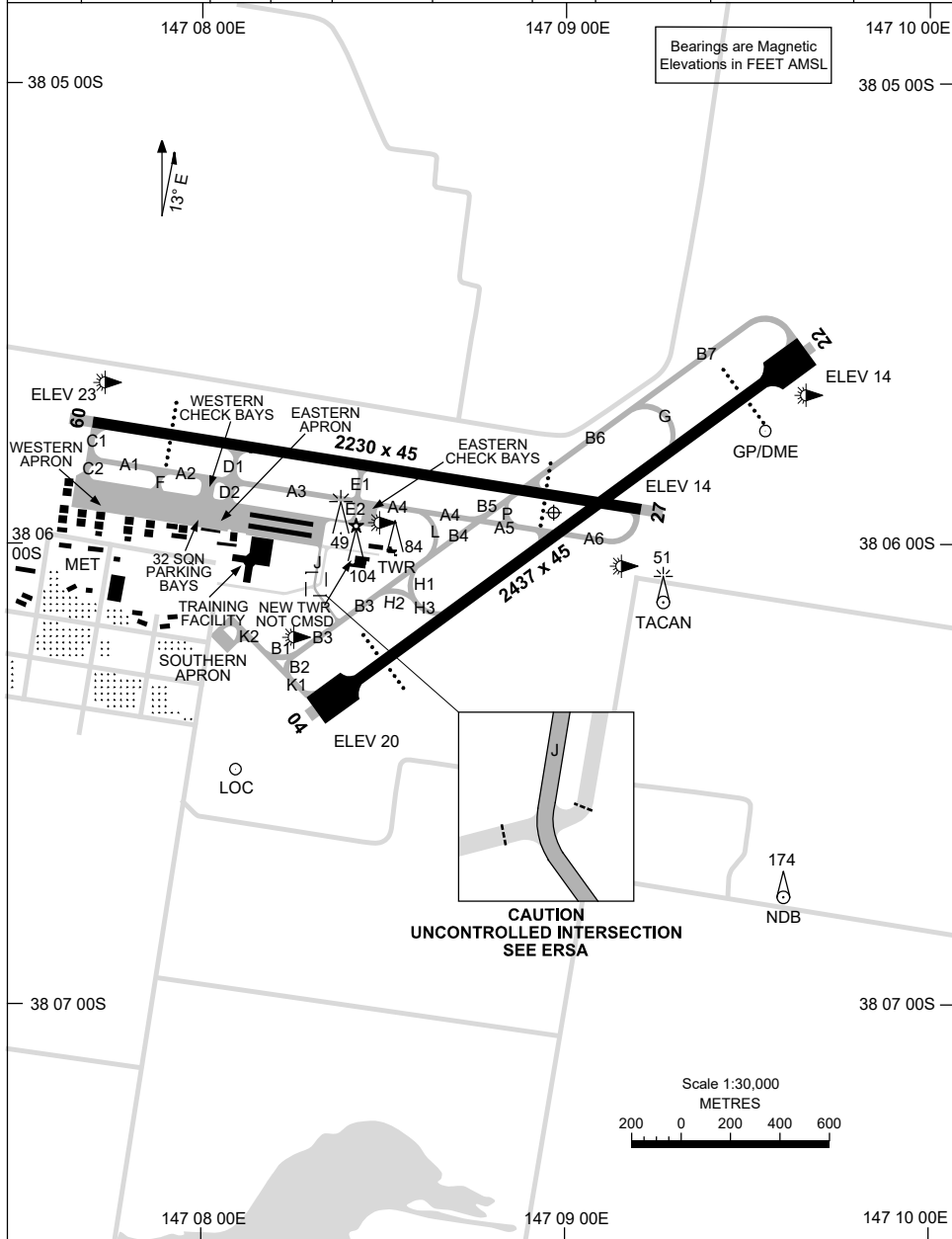


9 SEP 2021

AD ELEV 23
38 05 56S 147 08 58E

AERODROME CHART - Page 1
EAST SALE, VIC (YMES)

AFIS 118.3	ATIS (AWIS AH) 125.4 350	SMC 127.25	ACD 134.1	TWR 118.3 257.8	APP 123.3 340.2	ACC 135.8	FIA (AH) ML CEN 124.0	CTAF+AFRU (AH) 118.3	
---------------	-----------------------------	---------------	--------------	--------------------	--------------------	--------------	--------------------------	-------------------------	--



Changes: RWY 04 IWDI.

MESAD01-168

15 JUN 2023

AFIS 118.3	ATIS (AWIS AH) 125.4 350	SMC 127.25	ACD 134.1	TWR 118.3 257.8	APP 123.3 340.2	ACC 135.8	FIA (AH) ML CEN 124.0	CTAF+AFRU (AH) 118.3	
---------------	-----------------------------	---------------	--------------	--------------------	--------------------	--------------	--------------------------	-------------------------	--

Bearings are Magnetic
Elevations in FEET AMSL

RWY	AERODROME LIGHTING	
		ABN : ALTN W/G 8 SEC TAXIWAY : GREEN CENTRELINE. EASTERN CHECK BAY, WESTERN CHECK BAY LGT: BLUE EDGE AND GREEN CENTRELINE. RL : MAN , SDBY
09 ⁰⁸⁶	PAPI 3.0° 51FT MIRL	
²⁶⁶ 27	PAPI 3.0° 51FT MIRL	
04 ⁰⁴¹	PAPI 3.0° 49FT MIRL	
²²¹ 22	PAPI 3.0° 49FT MIRL	

NOTES

1. PAPI RWY 09/27 NIGHT AZIMUTH RESTRICTED TO 9° EITHER SIDE OF RWY CENTRELINE.

DME or GNSS ARRIVAL PROCEDURES EAST SALE, VIC (YMES)

17 JUN 2021

AFIS 118.3	ATIS (AWIS AH) 125.4 350	APP 123.3 340.2	ACC 135.8	TWR 118.3 257.8	FIA (AH) ML CEN 124.0	CTAF+AFRU (AH) 118.3	Bearings are Magnetic Elevations in FEET AMSL
---------------	-----------------------------	--------------------	--------------	--------------------	--------------------------	-------------------------	--

**DME USING ESL DME
REFERENCE WAYPOINT ESL NDB**

10 NM MSA 1900

AD ELEV 23

<p>SECTOR A</p>		<p>MISSED APPROACH:</p> <p>CLIMB ON TRACK TO 3500FT OR AS DIRECTED BY ATC.</p>													
<p>NM TO ESL NDB or DME</p>															
<p>CIRCLING MINIMA</p>		<p>A,B: 670-2.4 C: 830-4.0 D: 1030-5.0</p>													
NM TO NDB or DME	13.2	12	11	10	9	8	7	6	5	4	3.5	2.9	2.4		
ALT (3° APCH PATH)	4100	3730	3410	3090	2770	2460	2140	1820	1500	1180	1030	830	670		

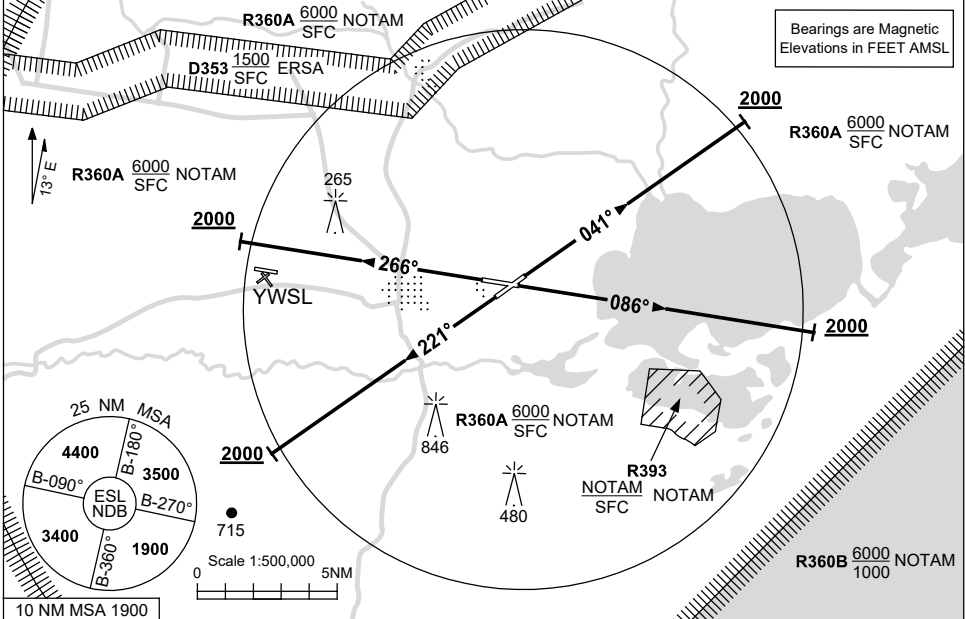
Changes: AFIS FREQ.

MESDG01-167

**STANDARD INSTRUMENT DEPARTURES (SID)
EAST SALE FIVE DEPARTURE (RADAR)
EAST SALE, VIC (YMES)**

28 NOV 2024

AFIS 118.3	ATIS (AWIS AH) 125.4 350	SMC 127.25	ACD 134.1	TWR 118.3 257.8	APP 123.3 340.2	ACC 135.8	FIA (AH) ML CEN 124.0	CTAF+AFRU (AH) 118.3
---------------	-----------------------------	---------------	--------------	--------------------	--------------------	--------------	--------------------------	-------------------------



EAST SALE FIVE DEPARTURE (RADAR)

RWY 04

- GRAD 3.3%
- Track 041°
- At 2000ft, but not before DER, turn to assigned heading or track

RWY 09

- GRAD 3.3%
- Track 086°
- At 2000ft, but not before DER, turn to assigned heading or track

RWY 22

- GRAD 3.6% to 1200ft then 3.3%
- Track 221°
- At 2000ft, but not before DER, turn to assigned heading or track

RWY 27

- GRAD 3.3%
- Track 266°
- At 2000ft, but not before DER, turn to assigned heading or track

COMMUNICATIONS FAILURE PROCEDURE

On recognition of communication failure

- Squawk 7600
- Maintain last assigned vector for two minutes, and
- CLIMB IF NECESSARY TO MINIMUM SAFE ALTITUDE, to maintain terrain clearance, then
- proceed in accordance with the latest ATC route clearance acknowledged.

Changes: R391A-B DELETED, R393 ADDED, Editorial.

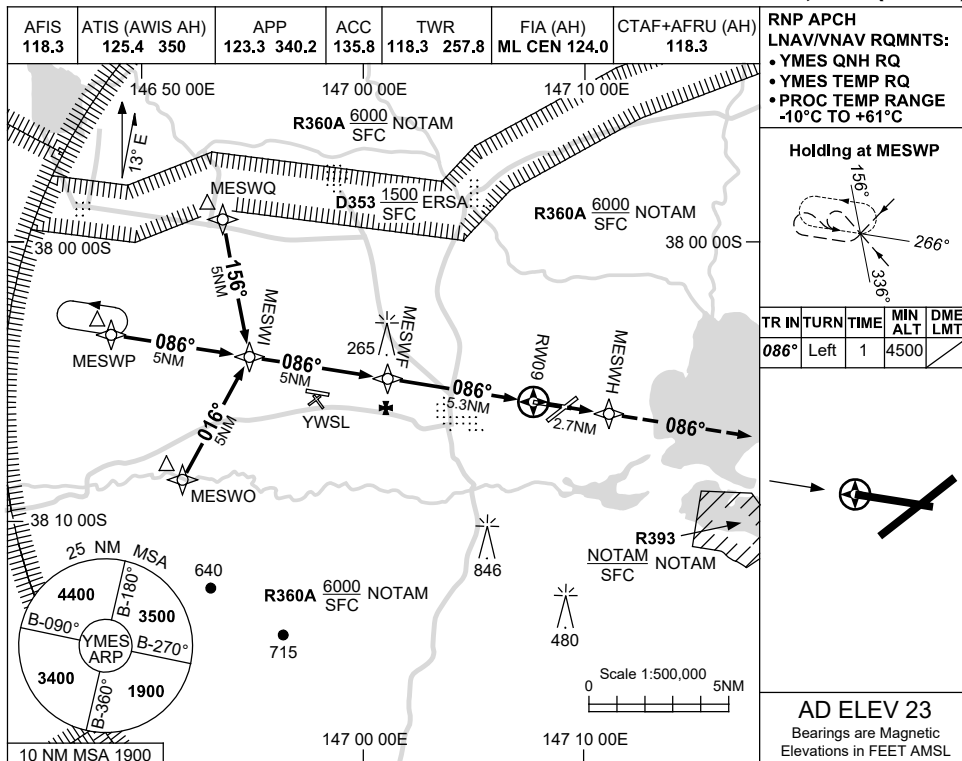
MESDP01-181

USE QNH

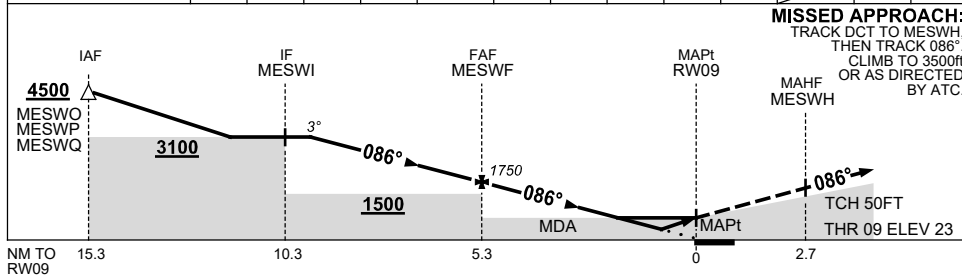
RNP RWY 09

28 NOV 2024

EAST SALE, VIC (YMES)



NM TO NEXT WPT	4.2	3	2	1	MESWF	4	3	2	1.5	0.9	RW09		
ALT (3° APCH PATH)	3100	2710	2390	2070	1750	1350	1030	710	550	360			



NOTES

CATEGORY	A	B	C	D
LNAV/VNAV		360 (337-1.9)		
LNAV		550 (527-3.0)		
CIRCLING	620 (597-2.4)		830 (807-4.0)	1030 (1007-5.0)
ALTERNATE	(1097-4.4)		(1307-6.0)	(1507-7.0)

- MAX IAS:
INITIAL : 210KT.
- HOLDING NOT
CONTAINED WITHIN
EAST SALE RESTD
AREAS.

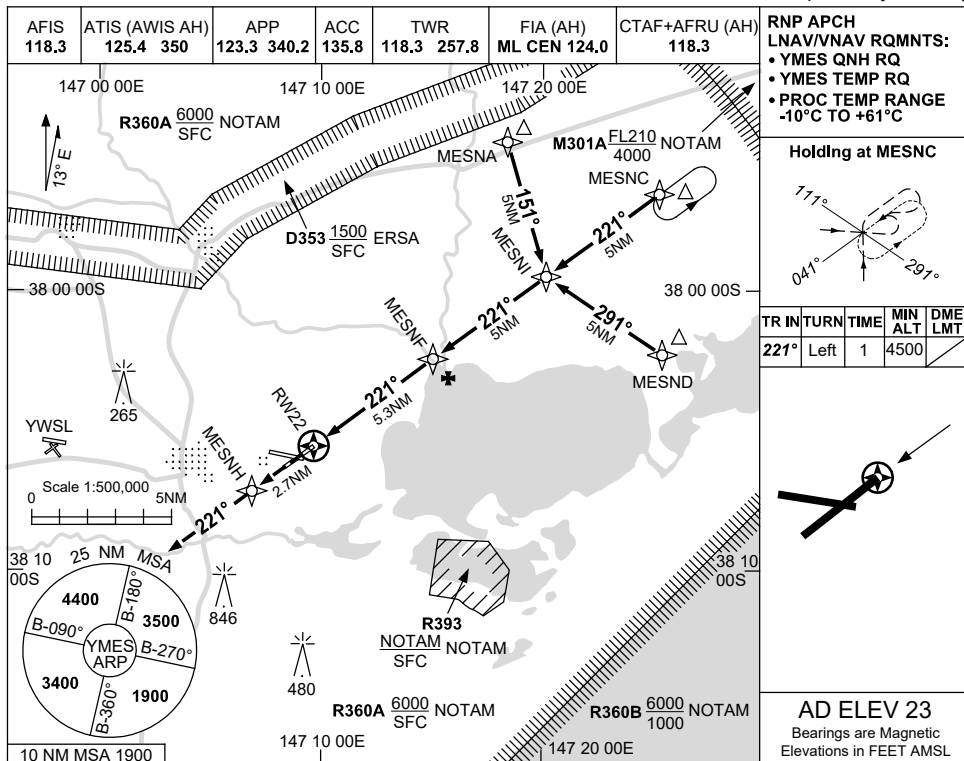
Changes: R391A-B DELETED, R393 ADDED, YWSL AD, Editorial.

MESGN01-181

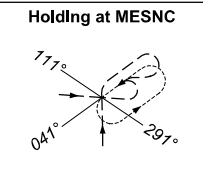
USE QNH

RNP RWY 22
EAST SALE, VIC (YMES)

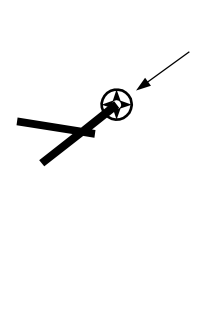
28 NOV 2024



RNP APCH
LNAV/VNAV RQMTS:
• YMES QNH RQ
• YMES TEMP RQ
• PROC TEMP RANGE
-10°C TO +61°C

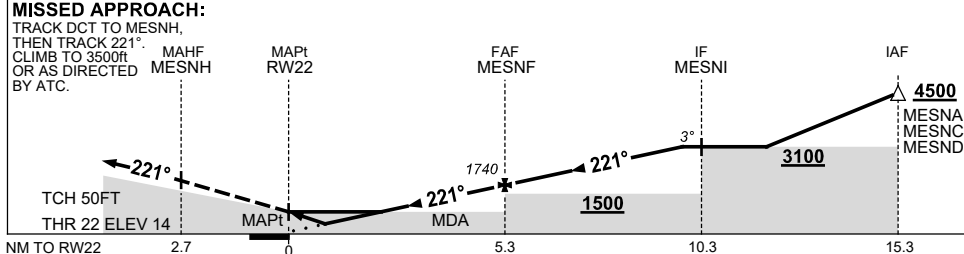


TR	IN	TURN	TIME	MIN ALT	DME LMT
221°	Left	1	4500		



AD ELEV 23
Bearings are Magnetic
Elevations in FEET AMSL

NM TO NEXT WPT	RW22	0.9	1.5	2	3	4	MESNF	1	2	3	4.3		
ALT (3° APCH PATH)		360	550	700	1020	1340	1740	2060	2380	2700	3100		



NM TO RW22	2.7	0	5.3	10.3	15.3
------------	-----	---	-----	------	------

NOTES
1. MAX IAS:
INITIAL : 210KT.

CATEGORY	A	B	C	D
LNAV/VNAV		360 (346-1.9)		
LNAV		550 (536-3.0)		
CIRCLING	620 (597-2.4)	830 (807-4.0)		1030 (1007-5.0)
ALTERNATE	(1097-4.4)		(1307-6.0)	(1507-7.0)

Changes: R391A-B DELETED, R393 ADDED, YWSL AD, Editorial.

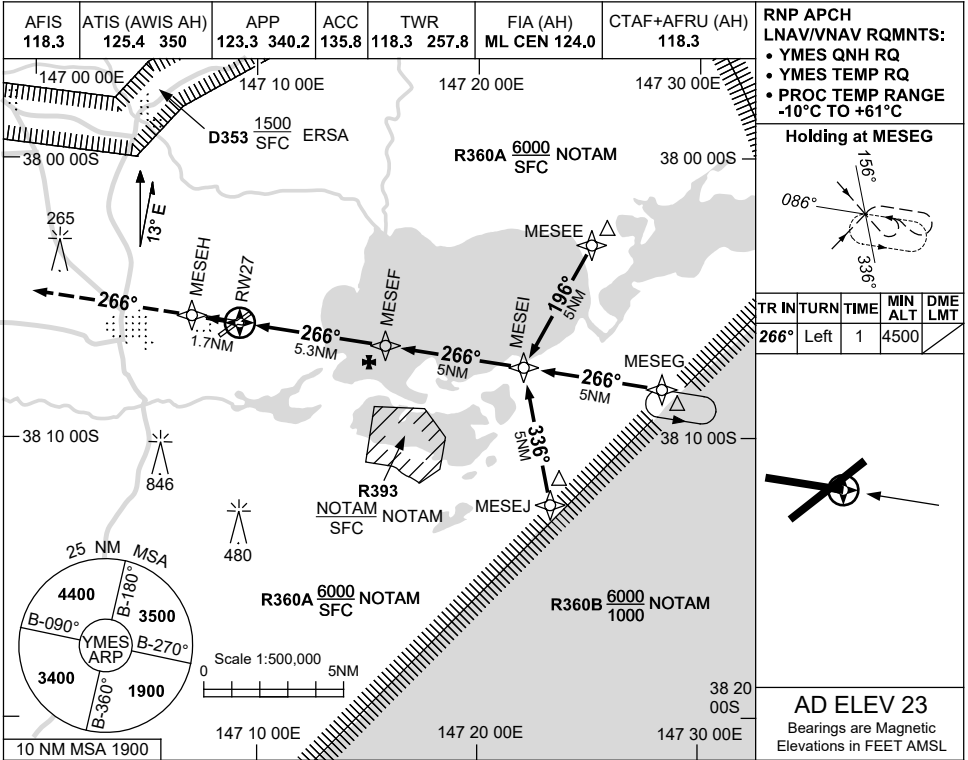
MESGN02-181

USE QNH

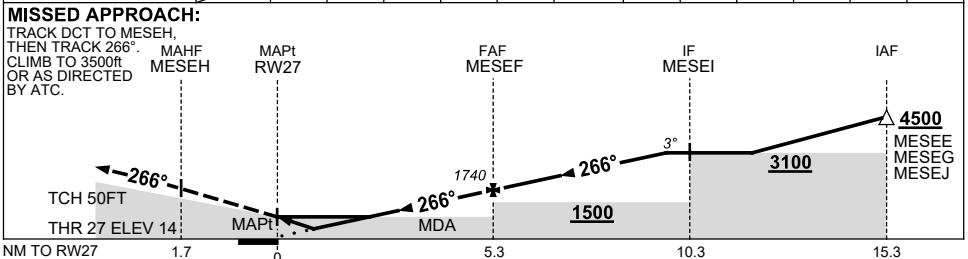
RNP RWY 27

28 NOV 2024

EAST SALE, VIC (YMES)



NM TO NEXT WPT	RW27	0.9	1.5	2	3	4	MESEF	1	2	3	4.3		
ALT (3° APCH PATH)		360	550	700	1020	1340	1740	2060	2380	2700	3100		



NOTES

1. MAX IAS: INITIAL : 210KT.

CATEGORY	A	B	C	D
LNAV/VNAV		360 (346-1.9)		
LNAV		550 (536-3.0)		
CIRCLING	620 (597-2.4)	830 (807-4.0)		1030 (1007-5.0)
ALTERNATE	(1097-4.4)		(1307-6.0)	(1507-7.0)

Changes: R391A-B DELETED, R393 ADDED, Editorial.

MESSGN03-181