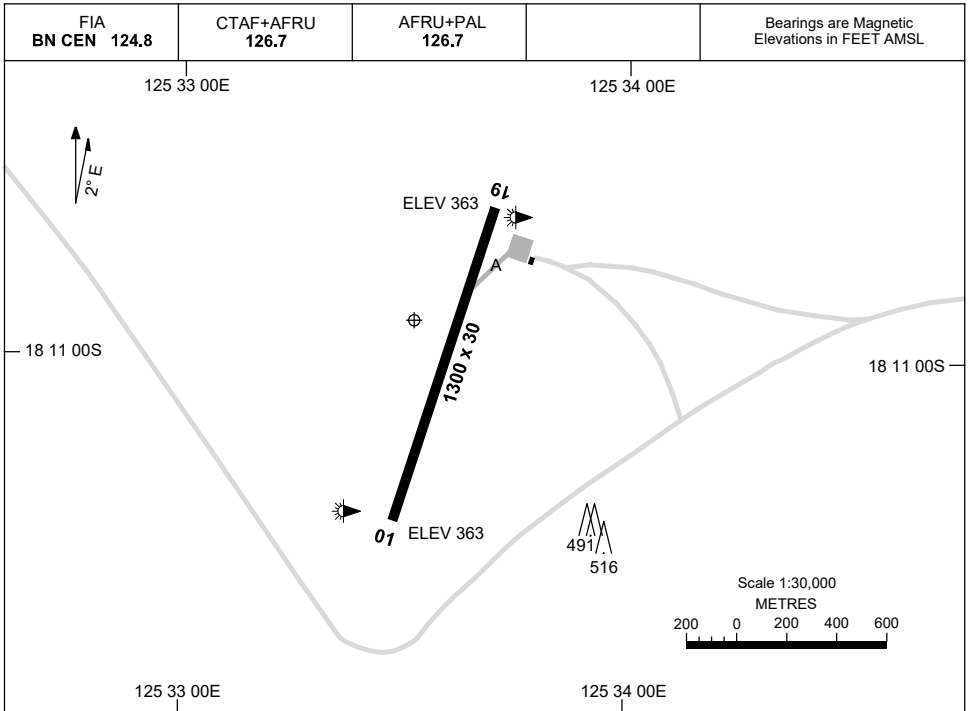


13 JUN 2024

AD ELEV 368
18 10 55S 125 33 31E

AERODROME CHART
FITZROY CROSSING, WA (YFTZ)



	AERODROME LIGHTING
RWY	RL : AFRU+PAL 126.7, PTBL IN EMERG
01 <small>015</small>	LIRL
<small>195</small> 19	LIRL

NOTES

1. AWIS (PHONE) 08 6216 2612

Changes: TWY, Editorial.

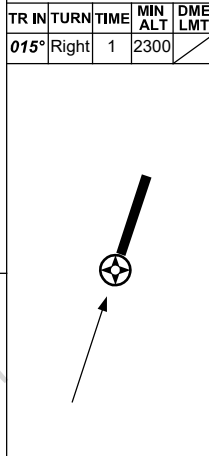
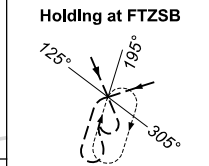
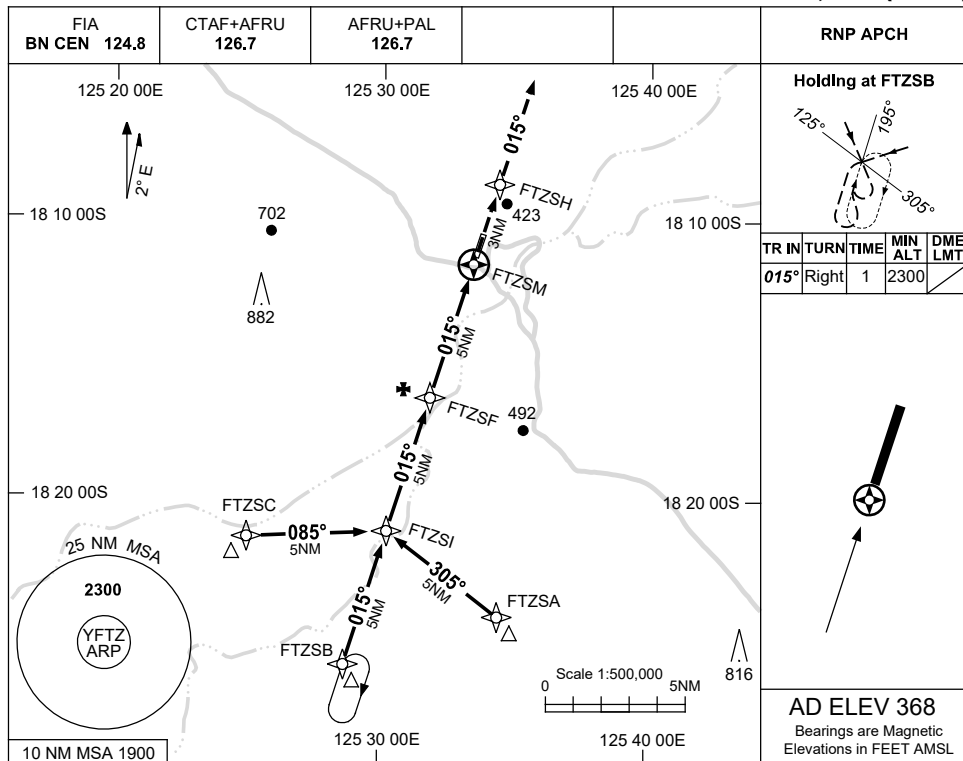
FTZAD01-179

USE QNH

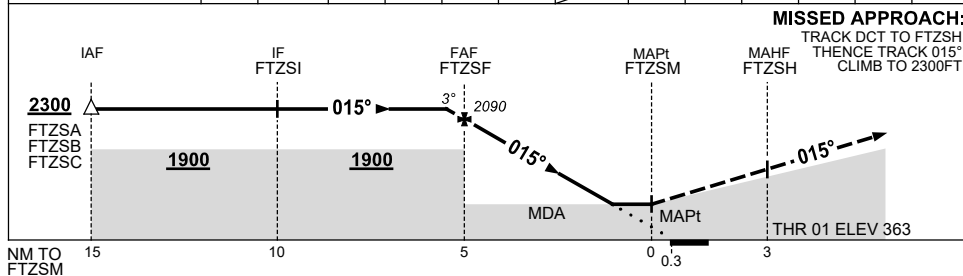
RNP RWY 01

8 SEP 2022

FITZROY CROSSING, WA (YFTZ)



NM TO NEXT WPT	0.7	FTZSF	4	3	2	1.4	FTZSM						
ALT (3° APCH PATH)	2300	2090	1770	1450	1140	930							



NOTES

CATEGORY	A	B	C	D
LNAV	930 (562-3.2)			NOT APPLICABLE
CIRCLING	1040 (672-2.4)		1140 (772-4.0)	
ALTERNATE	(1172-4.4)		(1272-6.0)	

- MAX IAS: INITIAL : 210KT.
- CAUTION:** POSSIBILITY OF STOCK ON AERODROME.
- AWIS (PHONE) 08 6216 2612

Changes: CHART TITLE, PBN SPECIFICATION BOX.

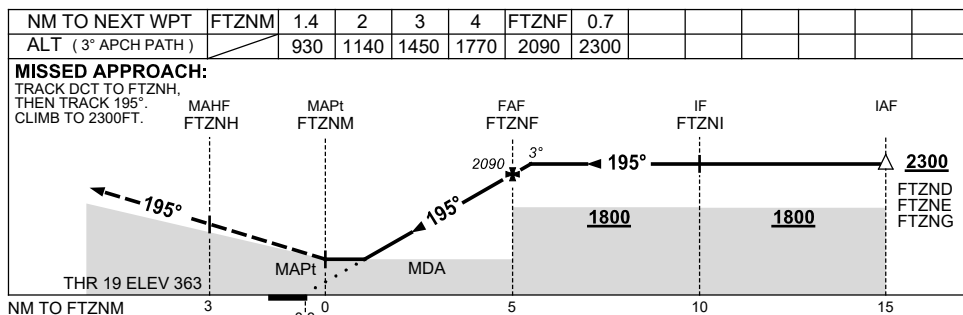
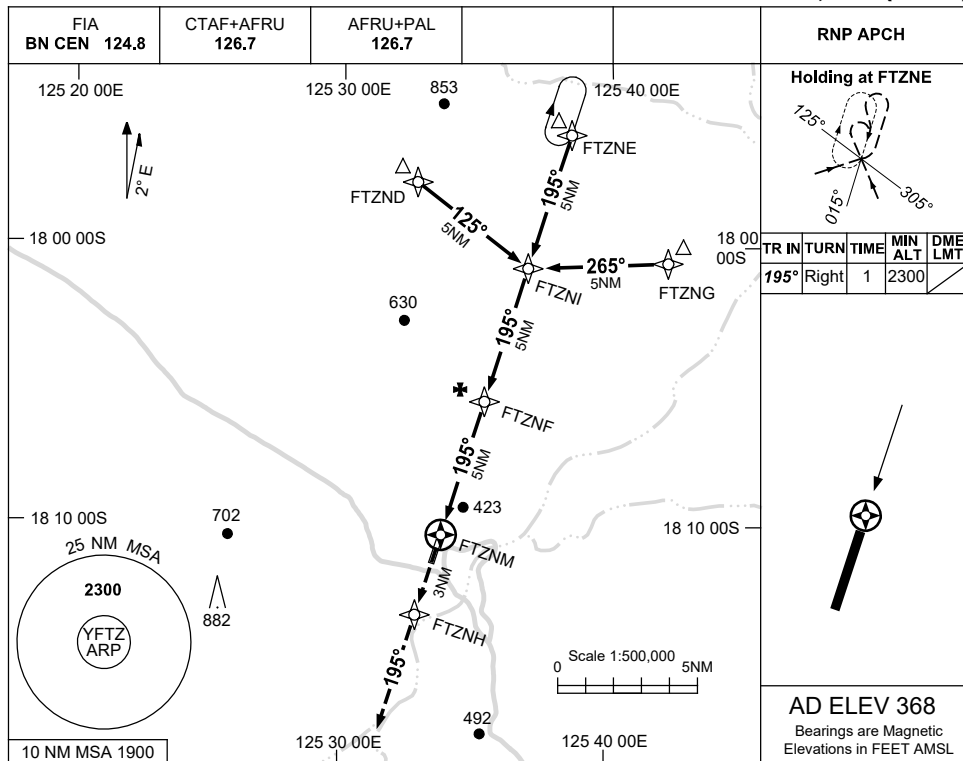
FTZGN01-172

USE QNH

RNP RWY 19

8 SEP 2022

FITZROY CROSSING, WA (YFTZ)



NOTES

CATEGORY	A	B	C	D
LNAV	930 (562-3.2)			NOT APPLICABLE
CIRCLING	1040 (672-2.4)		1140 (772-4.0)	
ALTERNATE	(1172-4.4)		(1272-6.0)	

- MAX IAS: INITIAL : 210KT.
- CAUTION:** POSSIBILITY OF STOCK ON AERODROME.
- AWIS (PHONE) 08 6216 2612

Changes: CHART TITLE, PBN SPECIFICATION BOX.

FTZGN02-172