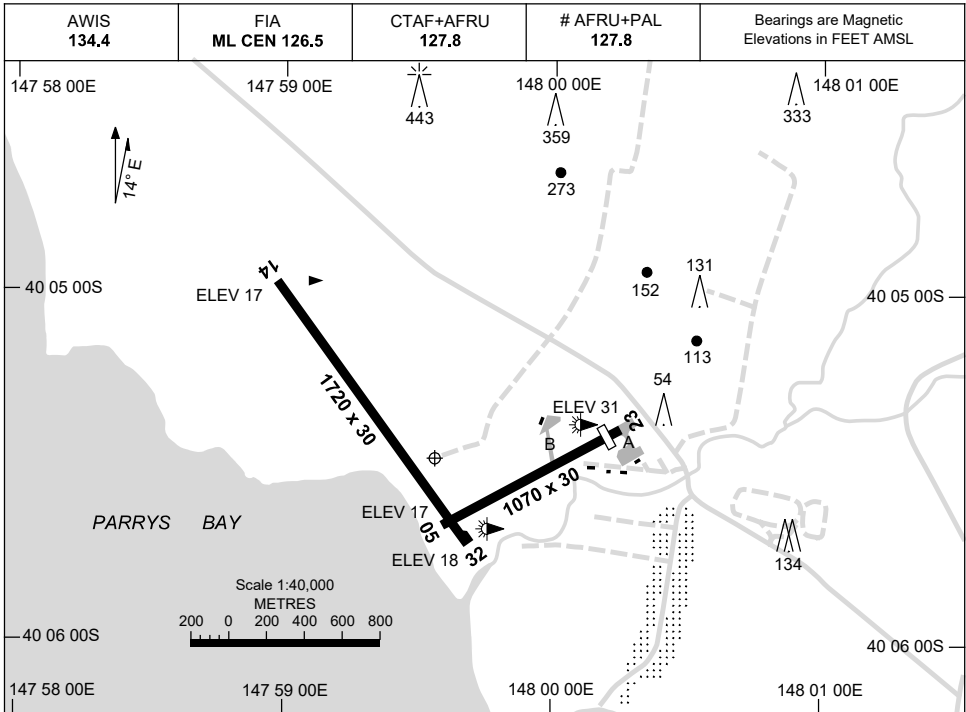


15 JUN 2023

AD ELEV 34
40 05 29S 147 59 34E

**AERODROME CHART
FLINDERS ISLAND, TAS (YFLI)**



RWY		AERODROME LIGHTING	
		HBN	: FLG R 1 SEC
		RL	: AFRU+PAL 127.8 , SDBY (15 SEC)
14	¹³⁰	LIRL	
	³¹⁰ 32	LIRL	
05	⁰⁴⁷	LIRL	
	²²⁷ 23	LIRL	

NOTES

- # 1. ACTIVATION RANGE MAY BE REDUCED TO THE NORTH DUE TO HIGH TERRAIN.
2. AWIS 134.4 ACTIVATED BY 1 SEC TRANSMISSION.
3. FIA FREQ 126.5 AVBL CIRCUIT AREA.

Changes: NOTES and Editorial.

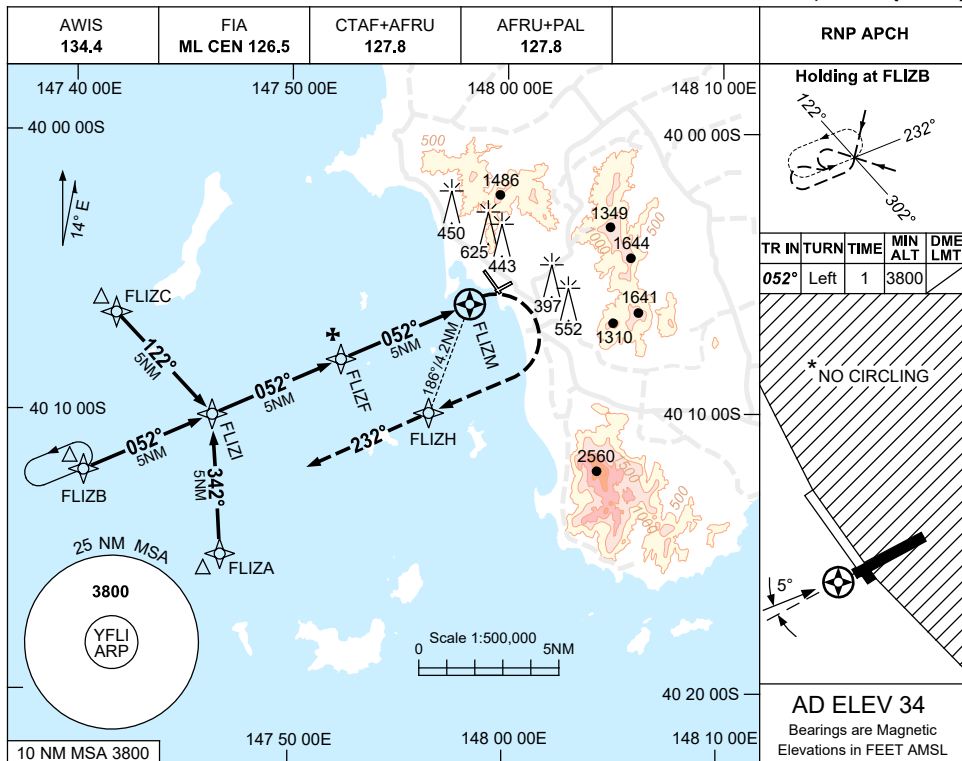
FLIAD01-175

USE QNH

RNP Z RWY 05

15 JUN 2023

FLINDERS ISLAND, TAS (YFLI)



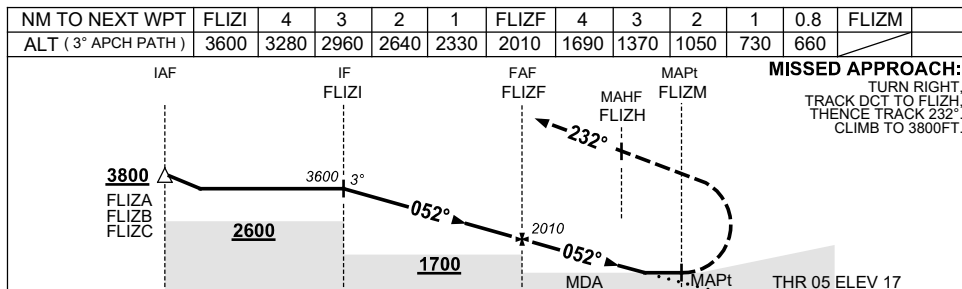
Holding at FLIZB

TR	IN	TURN	TIME	MIN ALT	DME LMT
052°	Left	1		3800	

* NO CIRCLING

5°

AD ELEV 34
Bearings are Magnetic
Elevations in FEET AMSL



CATEGORY	A	B	C	D
LNAV	660 (643-3.7)			NOT APPLICABLE
CIRCLING *	1170 (1136-2.4)		1270 (1236-4.0)	
ALTERNATE	(1636-4.4)		(1736-6.0)	

- NOTES**
- MAX IAS: INITIAL : 210KT, MAP TURN: 160KT.
 - *2. NO CIRCLING EAST OF RWY 14/32.
 - COLOUR: SEE SPEC NOTICES.

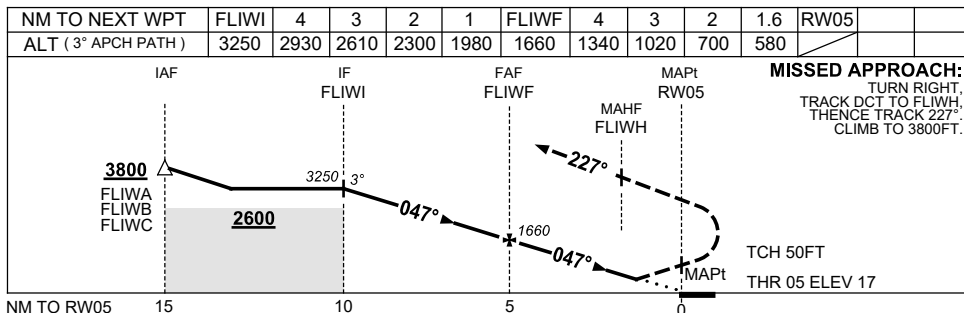
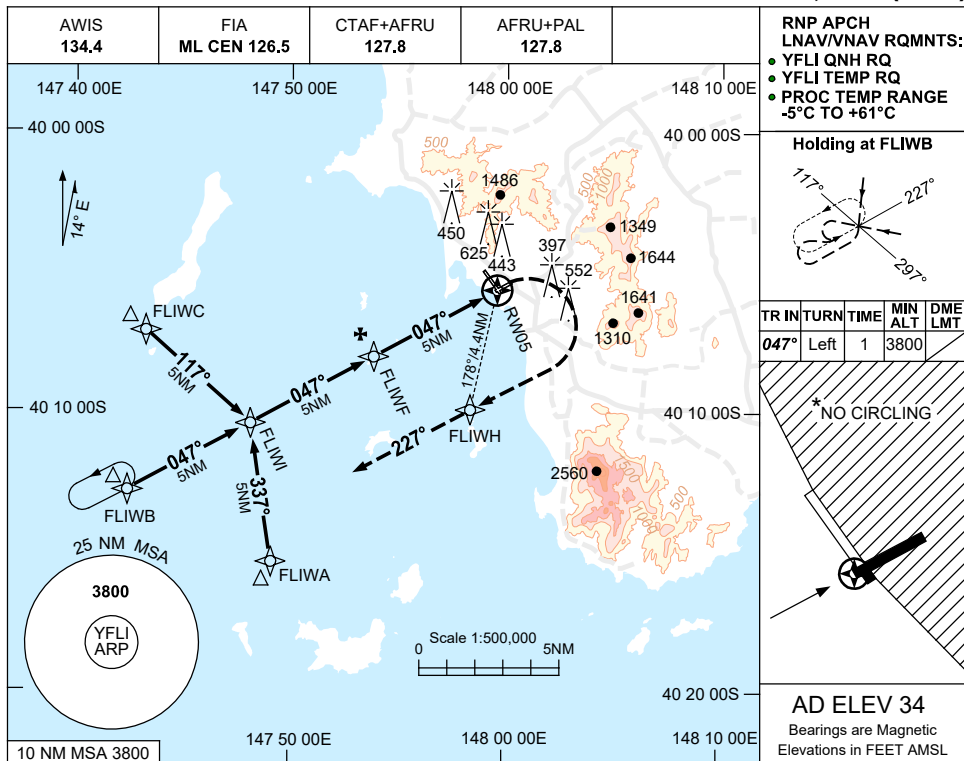
Changes: CHART TITLE, PBN SPECIFICATION BOX, Editorial. FLIGN01-175

USE QNH

RNP Y RWY 05

15 JUN 2023

FLINDERS ISLAND, TAS (YFLI)



CATEGORY	A	B	C	D
LNAV/VNAV	580(563-3.2)			NOT APPLICABLE
CIRCLING *	1170(1136-2.4)		1270(1236-4.0)	
ALTERNATE	(1636-4.4)		(1736-6.0)	

- NOTES**
- MAX IAS:
INITIAL : 210KT.
MAP TURN: 160KT.
 - NO CIRCLING EAST OF RWY 14/32.
 - COLOUR: SEE SPEC NOTICES.

Changes: CHART TITLE, PBN SPECIFICATION BOX, Editorial.

FLIGN02-175