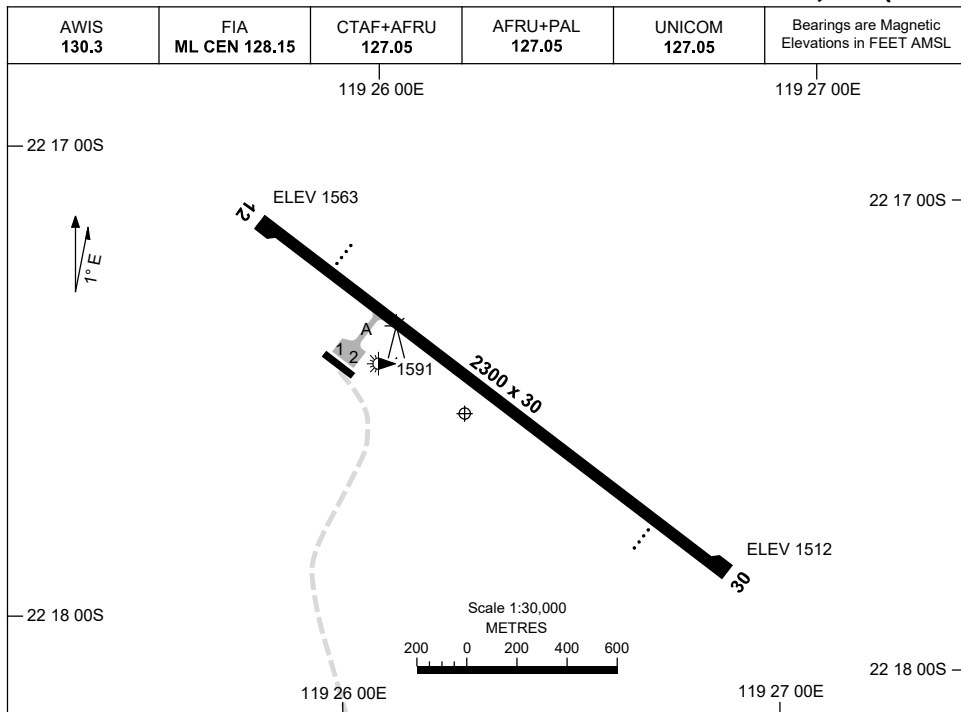


28 NOV 2024

AD ELEV 1563  
22 17 31S 119 26 14E

AERODROME CHART - Page 1  
**FORTESCUE DAVE FORREST, WA (YFDF)**



	<b>AERODROME LIGHTING</b>
<b>RWY</b>	TAXIWAY : BLUE EDGE RL : AFRU+PAL 127.05 , SDBY (45 SEC), PTBL (BY ARRANGEMENT)
<b>12</b> <small>123</small>	PAPI LEFT SIDE 3.0° 54FT LIRL PTBL
<small>303</small> <b>30</b>	PAPI LEFT SIDE 3.0° 54FT LIRL PTBL

**NOTES**

1. **CAUTION:** CHRISTMAS CREEK (YCHK) AD 12NM TO E.  
SEE OPERATING PROCEDURES ON AERODROME CHART Page 2.
2. **CAUTION:** CHRISTMAS CREEK (YCHK) IS IN CLOSE PROXIMITY AND THE APCH/DEP TRACKS CROSS CLOSE TO THE GROUND. DUE TO TERRAIN SHIELDING, VHF CONTACT WITH ACFT ON OR CLOSE TO THE GROUND AT YCHK IS NOT POSSIBLE.
3. FIA FREQ 128.15 AVBL IN CIRCUIT.
4. AWIS RQ THREE ONE-SECOND PULSE TO ACTIVATE.

Changes: NOTE 4.

FDFAD01-181

AWIS 130.3	FIA ML CEN 128.15	CTAF+AFRU 127.05	AFRU+PAL 127.05	UNICOM 127.05	Bearings are Magnetic Elevations in FEET AMSL
---------------	----------------------	---------------------	--------------------	------------------	--

**OPERATING PROCEDURES**

**CAUTION:** Procedure overlaps Christmas Creek (YCHK) procedures. Fortescue Dave Forrest (YDF) and Christmas Creek (YCHK) are considered one aerodrome for the purposes of aircraft separation.

The following conditions apply to this procedure:

Crews must be familiar with both YDF and YCHK aerodrome environment and normal broadcast procedures apply.  
In IMC or at night aircraft should not commence an approach until previous aircraft is assured of a landing.

Arriving aircraft coordinate intention with FIA ML CEN prior to entering the arrival corridor for Fortescue Dave Forrest (YDF) and Christmas Creek (YCHK).

**West landing Configuration**

Broadcast intentions for Fortescue Dave Forrest (YDF) and Christmas Creek (YCHK) UNICOM 127.05 prior to leaving Newman and prior to reaching MILAL. If required hold at MILAL at or above 12,000FT. Depart MILAL on track 348° to DUGOV. Depart DUGOV to appropriate IAF.

**East landing Configuration**

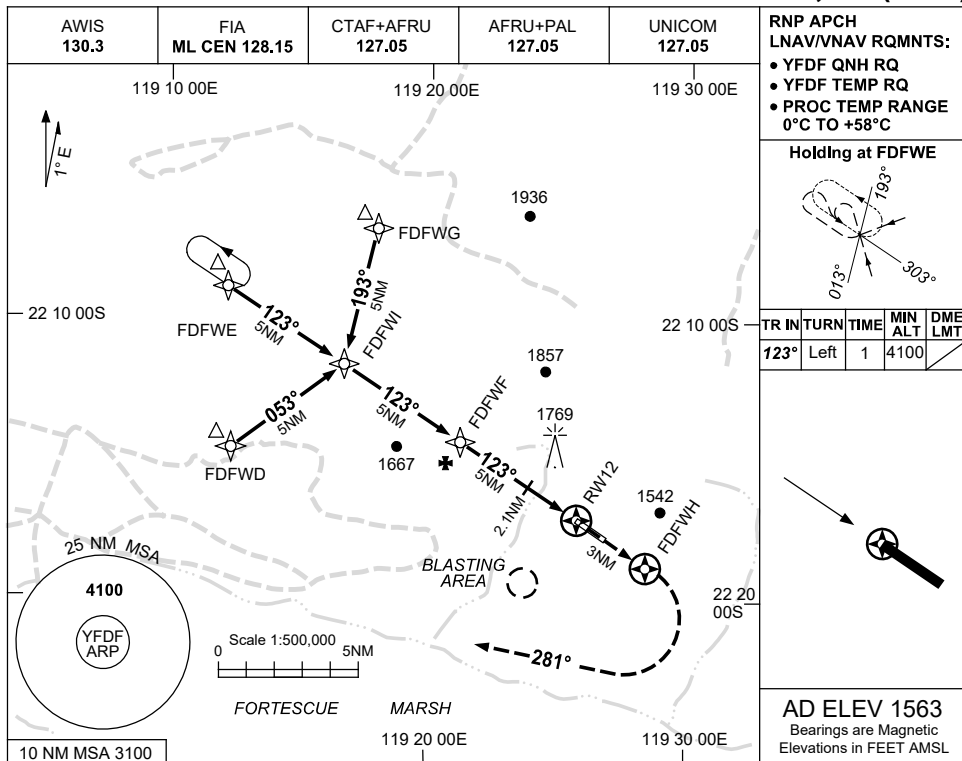
Broadcast intentions for Fortescue Dave Forrest (YDF) and Christmas Creek (YCHK) UNICOM 127.05 prior to leaving GUVNA for VEPEK. If required hold at VEPEK at or above 7,000FT. Depart VEPEK to appropriate IAF.

USE QNH

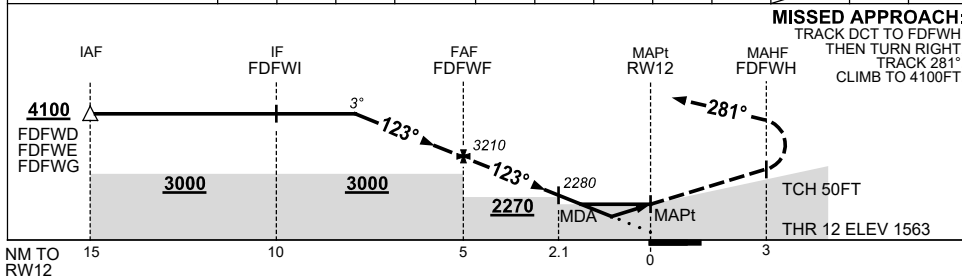
RNP RWY 12

30 NOV 2023

**FORTESCUE DAVE FORREST, WA (YDF)**



NM TO NEXT WPT	2.8	2	1	FDFWF	4	3	2.1	1.8	1.2	RW12		
ALT (3° APCH PATH)	4100	3850	3530	3210	2890	2570	2280	2180	1990			



**NOTES**

CATEGORY	A	B	C	D
LNAV/VNAV	1990 (427-2.4)			
LNAV	2180 (617-3.5)			
CIRCLING	2370 (807-2.4)		2520 (957-4.0)	2520 (957-5.0)
ALTERNATE	(1307-4.4)		(1457-6.0)	(1457-7.0)

1. MAX IAS:  
INITIAL : 210KT.
2. **CAUTION:** PROC IS OVERLAID BY PROCS AT YCHK. ACFT SEPARATION IS NOT ASSURED.

Changes: CHART TITLE, PBN SPECIFICATION BOX, Editorial.

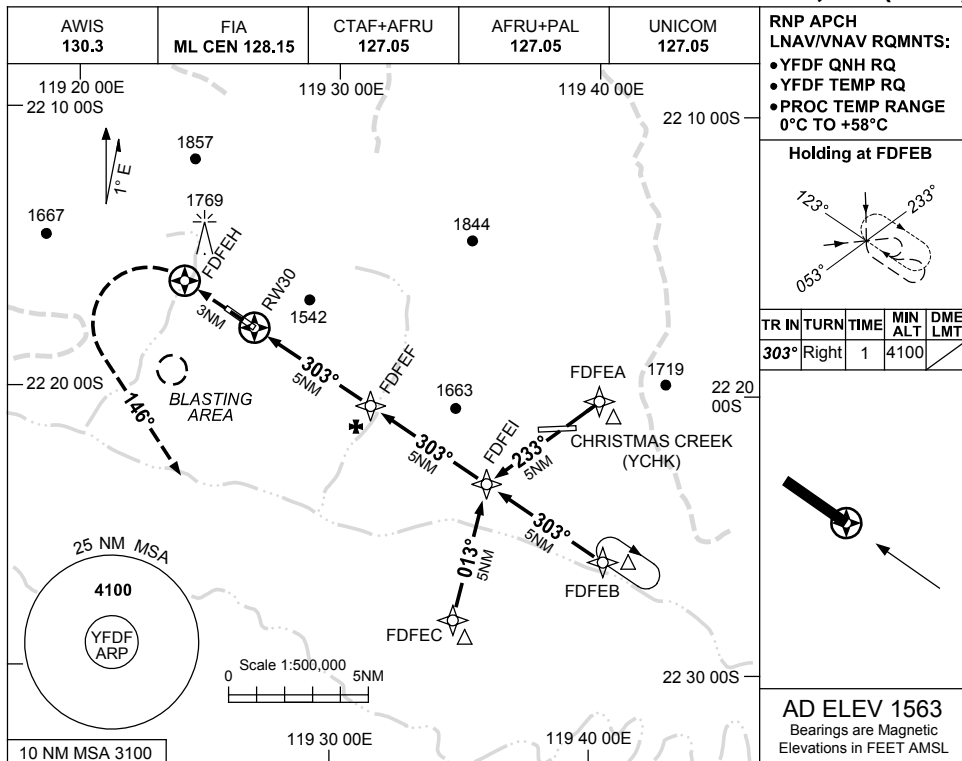
FDFGN01-177

USE QNH

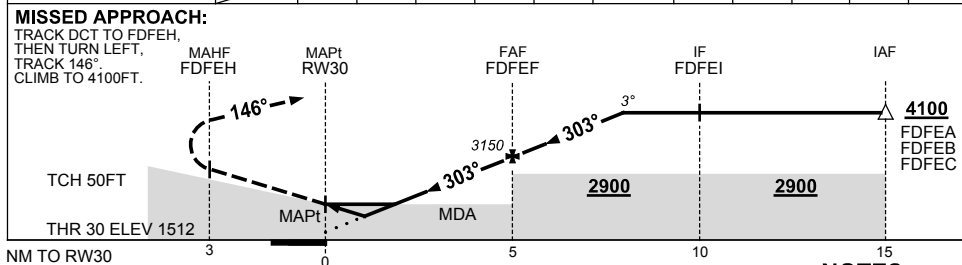
RNP RWY 30

30 NOV 2023

**FORTESCUE DAVE FORREST, WA (YDF)**



NM TO NEXT WPT	RW30	1.3	1.9	2	3	4	FDFEF	1	2	3		
ALT (3° APCH PATH)		1990	2170	2200	2520	2840	3150	3470	3790	4100		



**NOTES**

1. MAX IAS:  
INITIAL : 210KT.
2. **CAUTION:** PROC IS OVERLAID BY PROCS AT YCHK. ACFT SEPARATION IS NOT ASSURED.
3. **CAUTION:** HOLDING AT FDFEB SEPARATION NOT ASSURED FROM YGIA RNP RWY 09

CATEGORY	A	B	C	D
LNAV/VNAV	<b>1990</b> (478-2.7)			
LNAV	<b>2170</b> (658-3.7)			
CIRCLING	<b>2370</b> (807-2.4)	<b>2520</b> (957-4.0)	<b>2520</b> (957-5.0)	
ALTERNATE	(1307-4.4)		(1457-7.0)	

Changes: CHART TITLE, PBN SPECIFICATION BOX, NOTE 3, Editorial.

FDFGN02-177