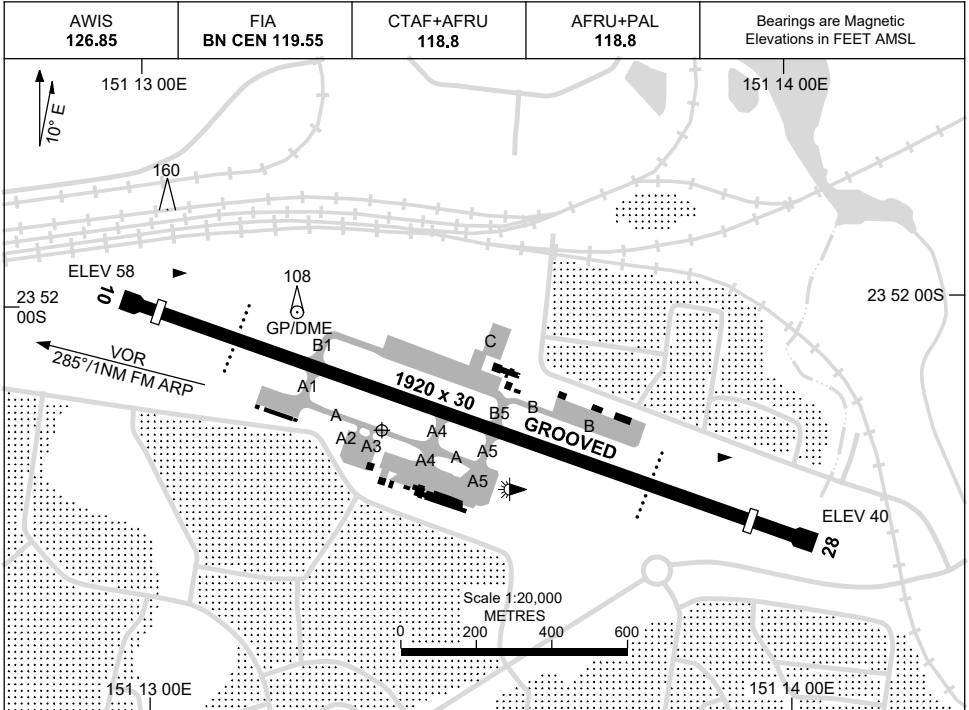


15 JUN 2023

AD ELEV 59  
23 52 11S 151 13 22E

**AERODROME CHART**  
**GLADSTONE, QLD (YGLA)**



	<b>AERODROME LIGHTING</b>
<b>RWY</b>	TAXIWAY : BLUE EDGE RL : AFRU+PAL 118.8 , SDBY (15 SEC)
<b>10</b> <small>101</small>	PAPI 3.0° 53FT LIRL RTIL
<small>281</small> <b>28</b>	PAPI 3.0° 52FT LIRL

**NOTES**

Changes: NOTES.

GLAAD01-175

# GNSS ARRIVAL PROCEDURES GLADSTONE, QLD (YGLA)

25 MAR 2021

AWIS <b>126.85</b>	FIA <b>BN CEN 119.55</b>	CTAF+AFRU <b>118.8</b>	AFRU+PAL <b>118.8</b>	Bearings are Magnetic Elevations in FEET AMSL
-----------------------	-----------------------------	---------------------------	--------------------------	--

25 NM MSA  
5000  
R-284° GLA VOR R-069°  
2900  
4000 R-137°

**REFERENCE WAYPOINT GLA VOR**

GLA VOR 116.3

VOR: POSSIBLE EXCESSIVE NEEDLE FLUCTUATIONS BELOW 10,000FT BETWEEN R-275° AND R-300°

\* NO CIRCLING

10 NM MSA 5000

\*  
NO CIRCLING  
SOUTH RWY 10/28

AD ELEV 59

**SECTOR C**

VOR

**MISSED APPROACH:**

TURN AS APPROPRIATE, TRACK 065°. CLIMB TO 5000FT. MAP TURN MAX IAS 210KT.

NM TO GLA VOR	25	15	13	8	6	2	0	0	0	0	0	0	0	0	0
<b>CIRCLING MINIMA</b>	A,B: 1230-2.4			C: 1230-4.0			D: N/A								
NM TO GLA VOR	9.6	9	8	7	6	5	4	3	2	1	0.9				
ALT (3° APCH PATH)	4000	3800	3480	3160	2850	2530	2210	1890	1570	1250	1230				

**SECTOR D**

VOR

**MISSED APPROACH:**

TURN LEFT, TRACK 065°. CLIMB TO 5000FT.

NM TO GLA VOR	25	18	15	10	6	5	3	0	0	0	0	0	0	0	0
<b>CIRCLING MINIMA</b>	A,B: 1230-2.4			C: 1230-4.0			D: N/A								
NM TO GLA VOR	12.5	12	11	10	9	8	7	6	5	4	3	2	1	0.6	
ALT (3° APCH PATH)	5000	4850	4530	4210	3900	3580	3260	2940	2620	2300	1990	1670	1350	1230	

Changes: MINIMA, SECTOR C STEP ALT, SECTOR D 10NM FIX.

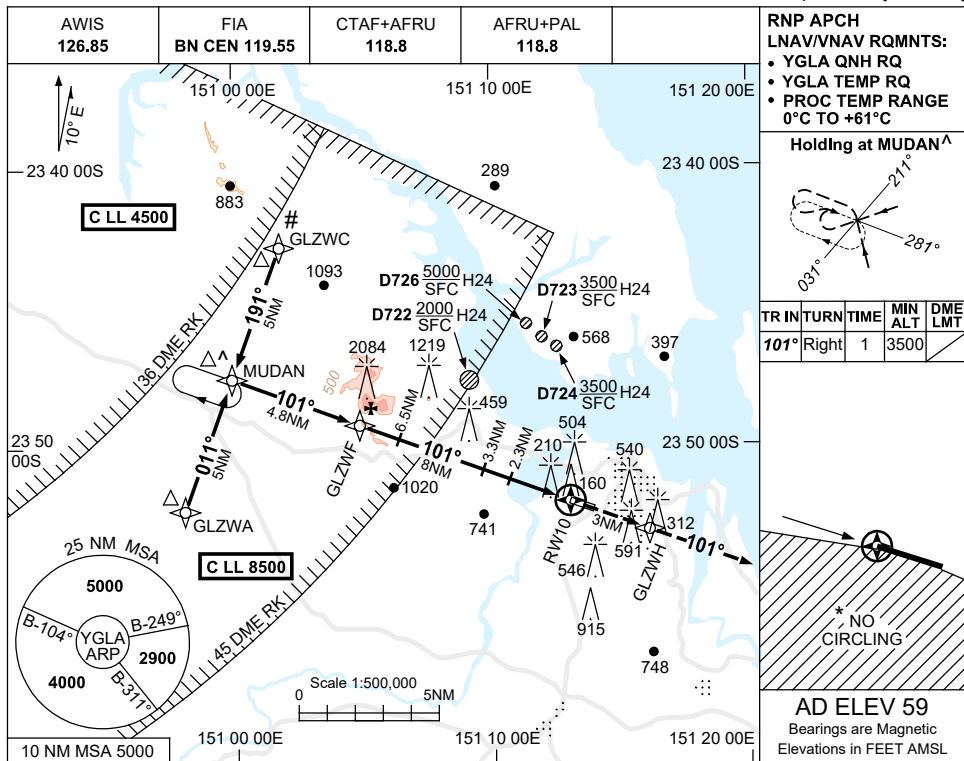
GLADG01-166

USE QNH

RNP RWY 10

GLADSTONE, QLD (YGLA)

21 MAR 2024



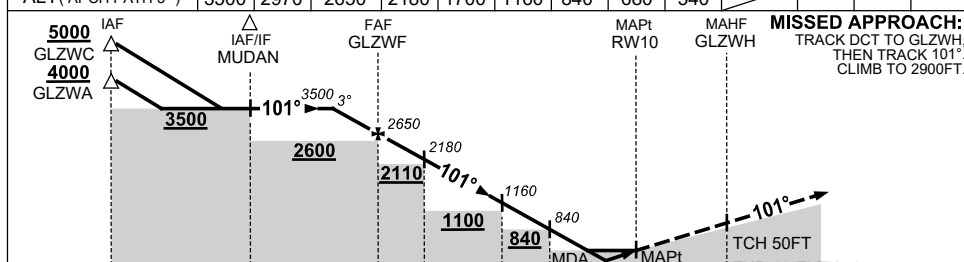
**RNP APCH**  
**LNAV/VNAV RQMTS:**  
 • YGLA QNH RQ  
 • YGLA TEMP RQ  
 • PROC TEMP RANGE 0°C TO +61°C

**Holding at MUDAN<sup>^</sup>**

TR IN	TURN	TIME	MIN ALT	DME LMT
101°	Right	1	3500	

**AD ELEV 59**  
 Bearings are Magnetic  
 Elevations in FEET AMSL

NM TO NEXT WPT	2.7	1	GLZWF	6.5	5	3.3	2.3	1.8	1.4	RW10
ALT (APCH PATH 3°)	3500	2970	2650	2180	1700	1160	840	680	540	



**MISSED APPROACH:**  
 TRACK DCT TO GLZWH,  
 THEN TRACK 101°  
 CLIMB TO 2900FT.

NM TO RWY10	17.8	12.8	8	6.5	3.3	2.3	0	3
Altitude	5000	3500	2650	2180	1160	840	MDA	TCH 50FT THR 10 ELEV 58

**NOTES**

- MAX IAS:  
INITIAL : 210KT.  
HOLDING: 220KT.
- NO CIRCLING STH OF RWY10/28.
- COLOR: SEE SPEC NOTICES.
- CAUTION: GLZWC IN CLOSE PROXIMITY TO YBRK CTA.
- CAUTION: YBRK CTA CLL 4500 OVERLAYS HOLDING PATTERN.

CATEGORY	A	B	C	D
LNAV/VNAV	540 (482-2.7)			NOT APPLICABLE
LNAV	680 (621-3.5)			
CIRCLING*	990 (931-2.4)		1170 (1111-4.0)	
ALTERNATE	(1431-4.4)		(1611-6.0)	

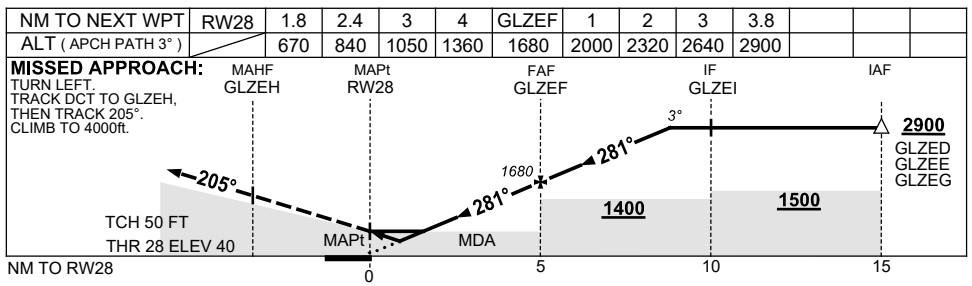
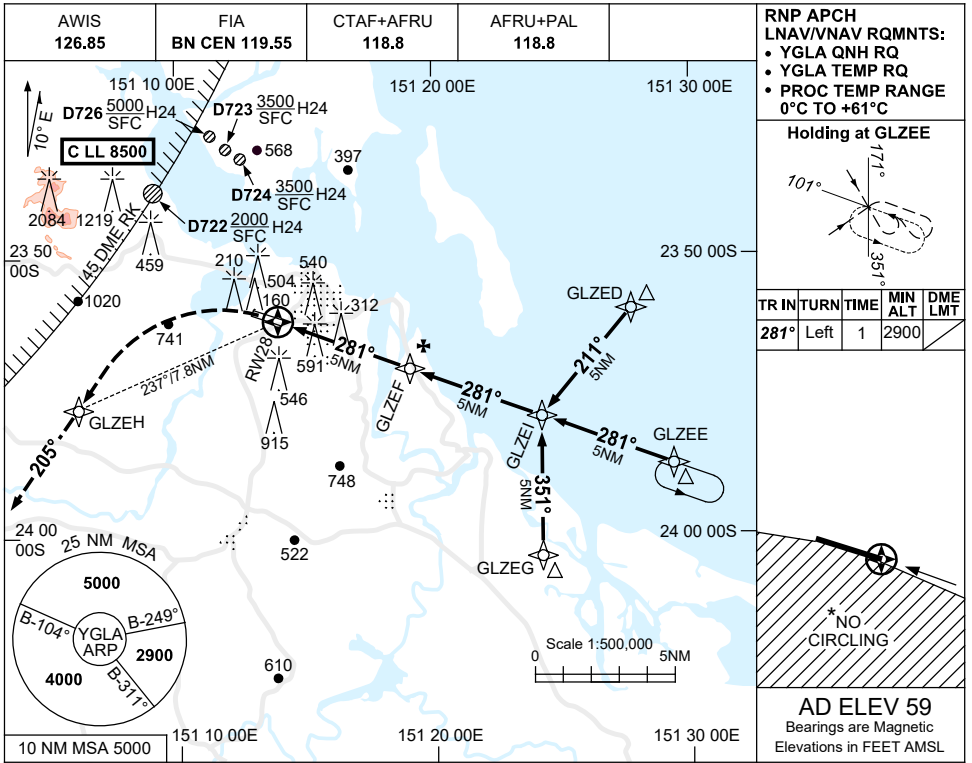
Changes: LNAV/VNAV MINIMA, MINIMUM SEGMENT ALTITUDE.

GLAGN01-178

28 NOV 2024

USE QNH

RNP RWY 28  
GLADSTONE, QLD (YGLA)



**NOTES**

1. MAX IAS:  
INITIAL : 210KT.
- \*2. NO CIRCLING STH OF RWY 10 / 28.
3. COLOUR: SEE SPEC NOTICES.
4. CAUTION: PROC IS OVERLAID BY PROC AT YFLD. ACFT SEPARATION IS NOT ASSURED.

CATEGORY	A	B	C	D
LNAV/VNAV	670 (630-3.6)			NOT APPLICABLE
LNAV	840 (800-4.6)			
CIRCLING *	990 (931-2.4)		1170 (1111-4.0)	
ALTERNATE	(1431-4.4)		(1611-6.0)	

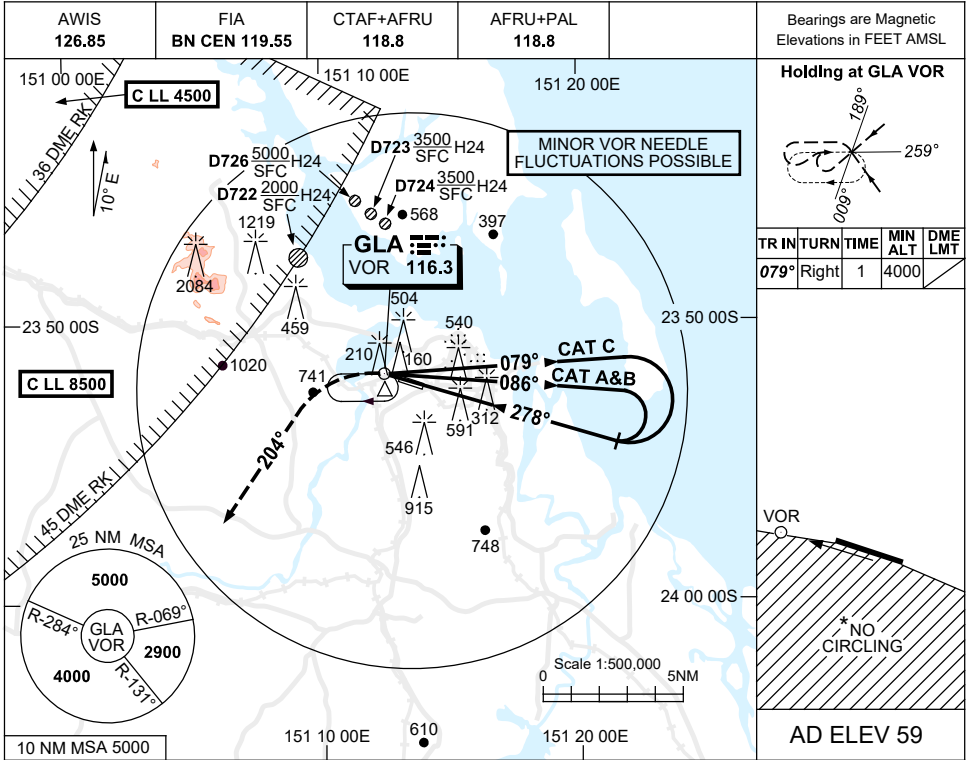
Changes: NOTE 4.

GLAGN02-181

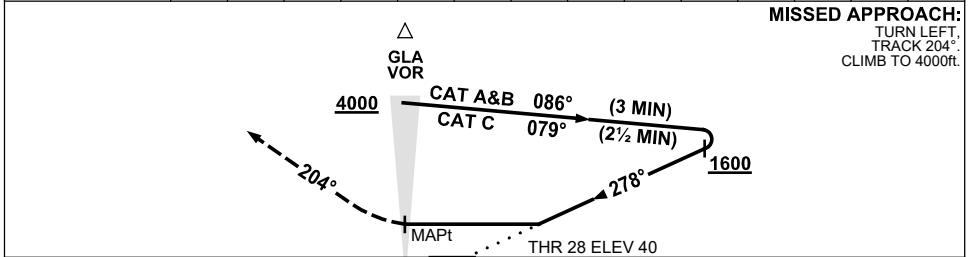
28 NOV 2024

USE QNH

VOR RWY 28  
GLADSTONE, QLD (YGLA)



DME DIST	NOT APPLICABLE									
ALT										



- NOTES**
1. MAX IAS:  
INITIAL:  
CAT C 210KT.
  2. NO CIRCLING STH OF RWY 10 / 28.
  3. COLOUR: SEE SPEC NOTICES.
  4. CAUTION: PROC IS OVERLAID BY PROC AT YFLD. ACFT SEPARATION IS NOT ASSURED.

CATEGORY	A	B	C	D
S-I VOR	990 (950-5.0)			NOT APPLICABLE
CIRCLING *	990 (931-2.4)		1170 (1111-4.0)	
ALTERNATE	(1431-4.4)		(1611-6.0)	

Changes: NOTE 4.

GLAV001-181