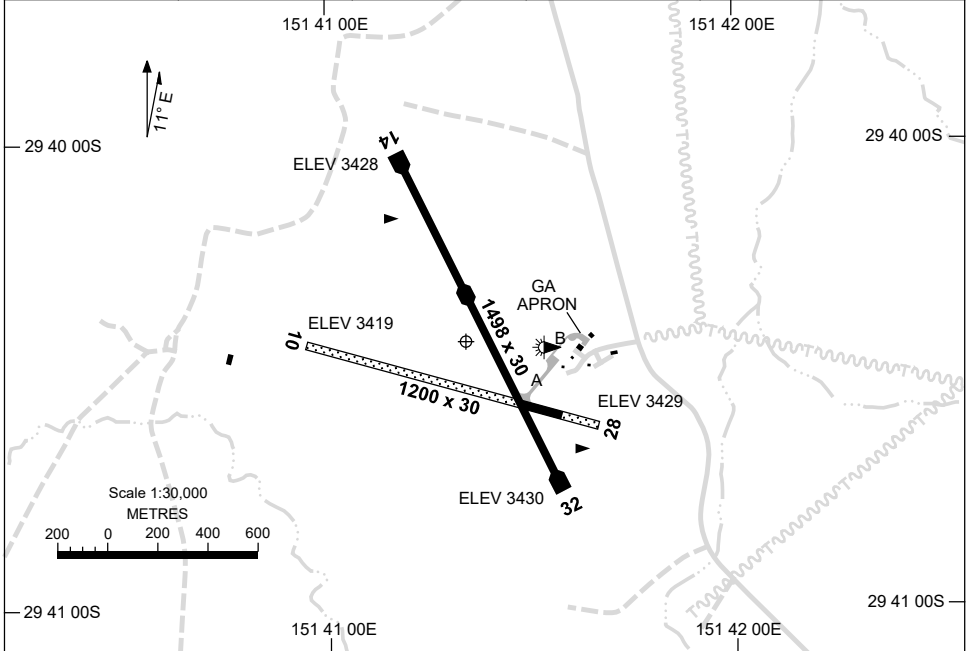


7 SEP 2023

AD ELEV 3431
29 40 30S 151 41 22E

AERODROME CHART
GLEN INNES, NSW (YGLI)

AWIS 133.575	FIA BN CEN 134.2	CTAF 126.7	PAL 125.3	Bearings are Magnetic Elevations in FEET AMSL
-----------------	---------------------	---------------	--------------	--



RWY	AERODROME LIGHTING	
		TAXIWAY : BLUE EDGE ON TWY A RL : PAL 125.3
14 ¹⁴³	LIRL	
³²³ 32	LIRL	
10 ⁰⁹⁵	NIL	
²⁷⁵ 28	NIL	

NOTES

- FIA FREQ 134.2 AVBL IN CIRCUIT AREA.
- AWIS RQ ONE-SECOND TRANSMIT PULSE TO ACTIVATE.

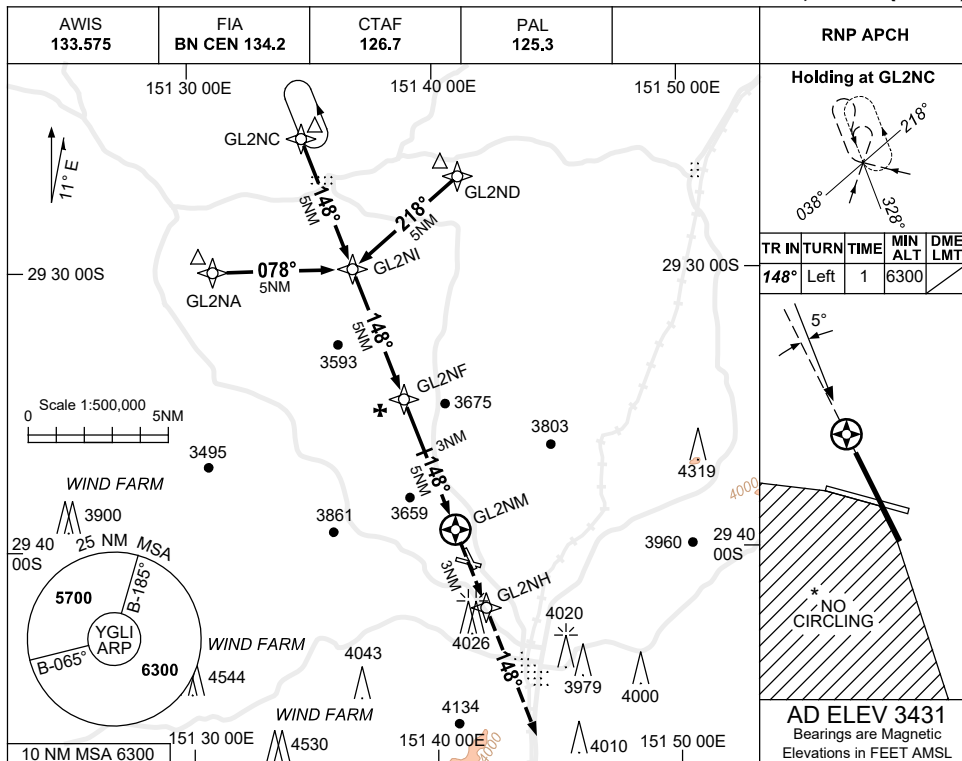
Changes: NOTES.

GLIAD01-176

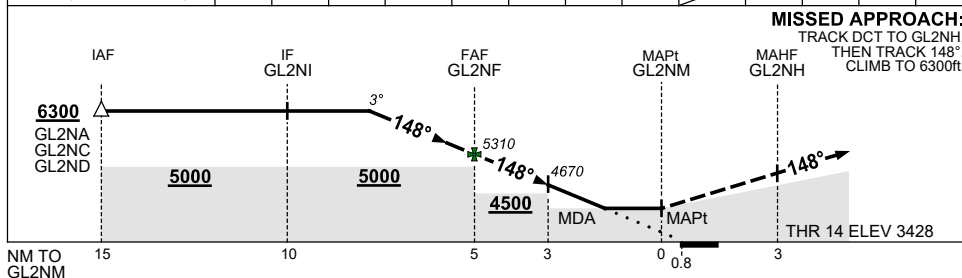
USE QNH

RNP RWY 14
GLEN INNES, NSW (YGLI)

28 NOV 2024



NM TO NEXT WPT	3.1	2	1	GL2NF	4	3	2	1	GL2NM
ALT (3° APCH PATH)	6300	5950	5630	5310	4990	4670	4360	4040	GL2NM



CATEGORY	A	B	C	D
LNAV	4040 (609-3.5)			NOT APPLICABLE
CIRCLING*	4370 (939-2.4)	4530 (1099-4.0)		
ALTERNATE	(1439-4.4)		(1599-6.0)	

- NOTES**
- MAX IAS: INITIAL : 210KT.
 - NO CIRCLING SOUTH-WEST OF RWY 10 & RWY 32.
 - COLOUR: SEE SPEC NOTICES.

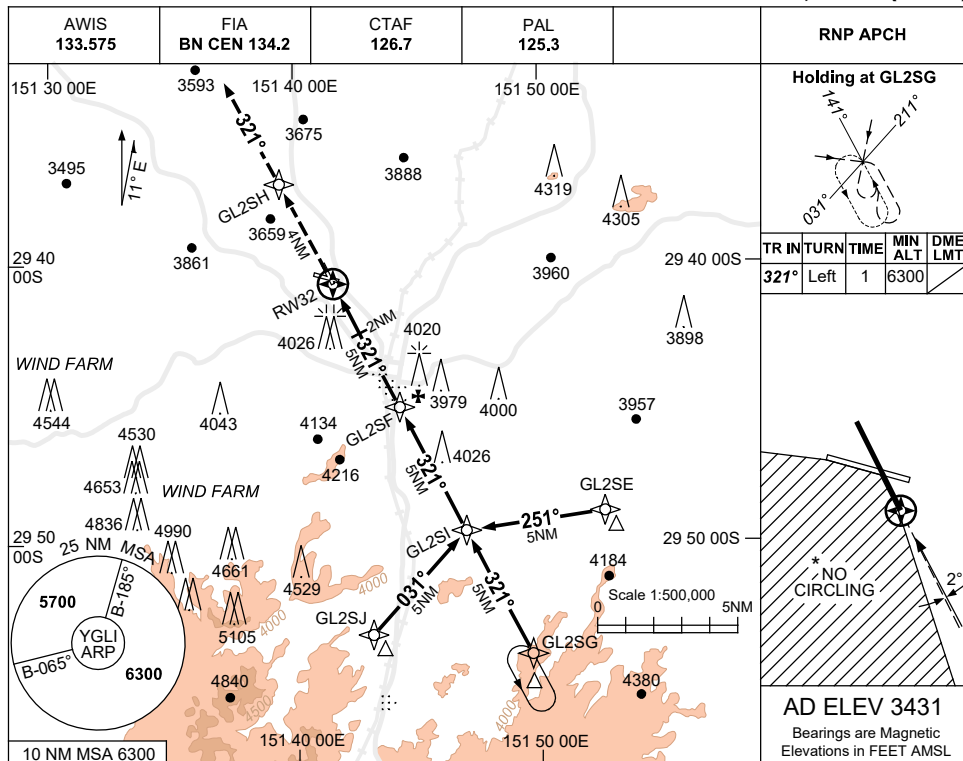
Changes: OBSTACLE ELEVATIONS, WPT NAMING CONVENTION, Editorial.

GLIGN01-181

USE QNH

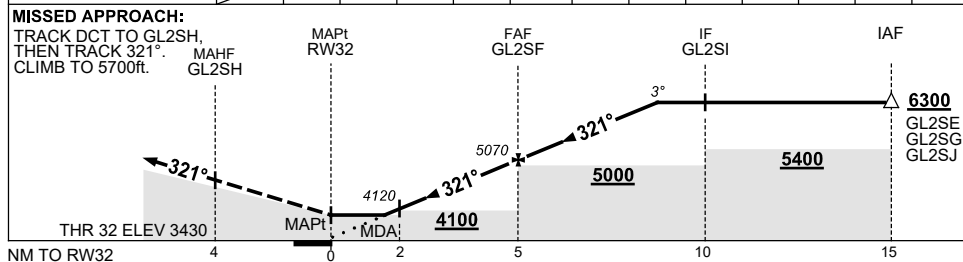
RNP RWY 32
GLEN INNES, NSW (YGLI)

28 NOV 2024



AD ELEV 3431
 Bearings are Magnetic
 Elevations in FEET AMSL

NM TO NEXT WPT	RW32	1.8	2	3	4	GL2SF	1	2	3	3.9			
ALT (3° APCH PATH)		4040	4120	4440	4750	5070	5390	5710	6030	6300			



- * 1. MAX IAS: INITIAL : 210KT.
- 2. NO CIRCLING IN SECTOR SW OF RWYS 10 / 28 AND 14 / 32.
- 3. COLOUR: SEE SPEC NOTICES.

CATEGORY	A	B	C	D
LNAV	4040 (609-3.5)			NOT APPLICABLE
CIRCLING *	4370 (939-2.4)		4530 (1099-4.0)	
ALTERNATE	(1439-4.4)		(1599-6.0)	

Changes: OBSTACLE ELEVATION, WPT NAMING CONVENTION, DIST-ALT TABLE. GLIGN02-181