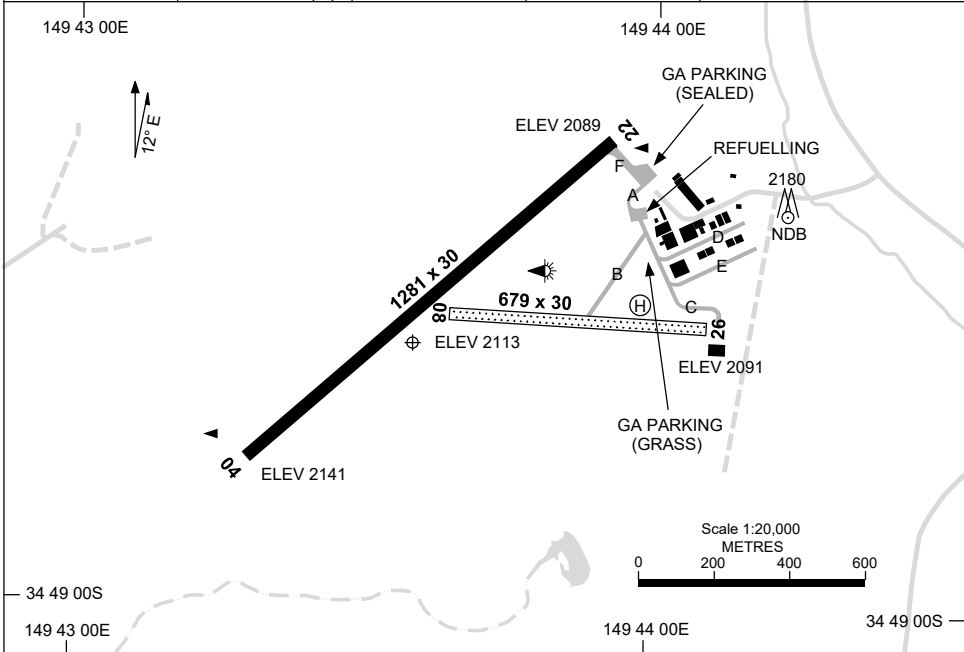


5 SEP 2024

AD ELEV 2141  
34 48 37S 149 43 35E

AERODROME CHART  
**GOULBURN, NSW (YGLB)**

AWIS 136.3	FIA ML CEN 121.2 (E) 124.1 (W)	CTAF+AFRU 127.15	PAL+AA 119.6	Bearings are Magnetic Elevations in FEET AMSL
---------------	--------------------------------------	---------------------	-----------------	--



AERODROME LIGHTING	
RWY	TAXIWAY : BLUE EDGE
	RL : PAL+AA 119.6
<b>04</b> <sup>035</sup>	LIRL
<sup>215</sup> <b>22</b>	LIRL
<b>08</b> <sup>080</sup>	NIL
<sup>260</sup> <b>26</b>	NIL

**NOTES**

- FIA FREQ 121.2 ON GROUND.
- AWIS RQ 1 SEC PULSE TO ACT.

Changes: HELIPAD ADDED, Editorial.

GLBAD01-180

# GNSS ARRIVAL PROCEDURES GOULBURN, NSW (YGLB)

15 JUN 2023

AWIS 136.3	FIA ML CEN 121.2 (E) 124.1 (W)	CTAF+AFRU 127.15	PAL+AA 119.6		Bearings are Magnetic Elevations in FEET AMSL
---------------	--------------------------------------	---------------------	-----------------	--	--

25 NM MSA

**REFERENCE WAYPOINT GLB NDB**

GLB

NDB

407

\* NO CIRCLING NORTH OF RUNWAY 04/22.

\* NO CIRCLING

10 NM MSA 4600

AD ELEV 2141

**SECTOR A**

NDB

**MISSED APPROACH:**

TURN LEFT,  
TRACK 236°. CLIMB TO 4700FT.

NM TO GLB NDB	25	15	12	8	6	5	2	0											
<b>CIRCLING MINIMA</b>	A,B: 3290-2.4			C: 3520-4.0			D: N/A												
NM TO GLB NDB	5.5	5	4	3	2	1.7	1												
ALT (3° APCH PATH)	4700	4560	4240	3920	3600	3520	3290												

**SECTOR B**

NDB

**MISSED APPROACH:**

TURN AS APPROPRIATE,  
TRACK 270°. CLIMB TO 4700FT.

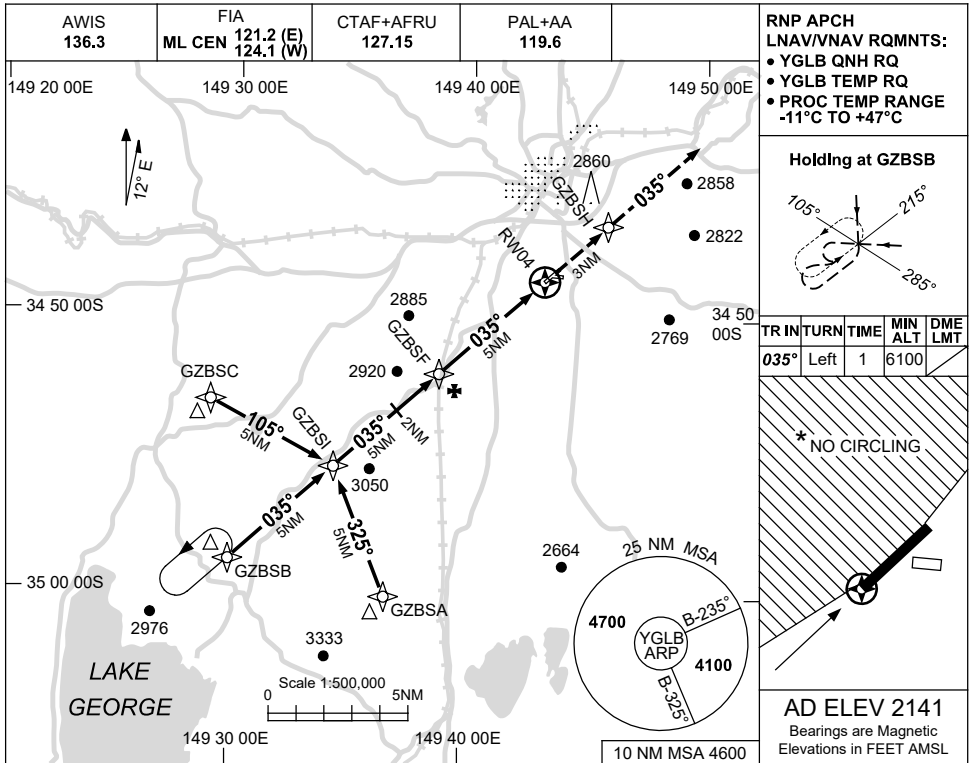
NM TO GLB NDB	25	15	11	7	5	4	2	0											
<b>CIRCLING MINIMA</b>	A,B: 3500-2.4			C: 3520-4.0			D: N/A												
NM TO GLB NDB	5.8	5	4	3	2	1.7													
ALT (3° APCH PATH)	4800	4560	4240	3920	3600	3500													

Changes: GFY OPS NOTE REMOVED.

15 JUN 2023

USE QNH

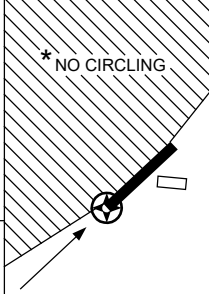
RNP RWY 04  
GOULBURN, NSW (YGLB)



RNP APCH  
LNAV/VNAV RQMTS:  
• YGLB QNH RQ  
• YGLB TEMP RQ  
• PROC TEMP RANGE  
-11°C TO +47°C

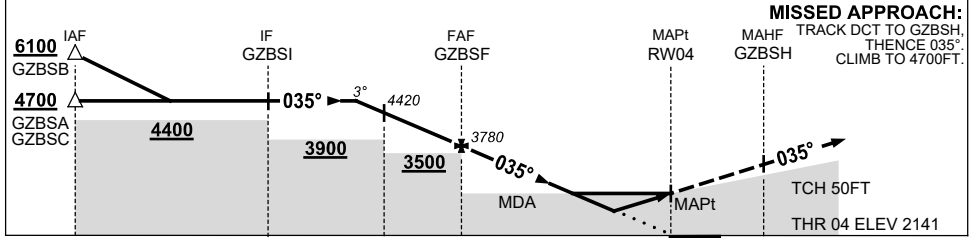


TR IN	TURN	TIME	MIN ALT	DME LMT
035°	Left	1	6100	



AD ELEV 2141  
Bearings are Magnetic  
Elevations in FEET AMSL

NM TO NEXT WPT	2.9	2	1	GZBSF	4	3	2.3	1.7	RW04
ALT (3° APCH PATH)	4700	4420	4100	3780	3460	3150	2910	2720	



MISSED APPROACH:  
TRACK DCT TO GZBSH,  
THENCE 035°,  
CLIMB TO 4700FT.

NM TO RW04: 15, 10, 7, 5, 0, 3

NOTES

- MAX IAS: INITIAL : 220KT.
- \* NO CIRCLING N OF RWY 04/22.

CATEGORY	A	B	C	D
LNAV/VNAV		2720 (579-3.3)		NOT APPLICABLE
LNAV		2910 (769-4.4)		
CIRCLING *	3290 (1149-2.4)	3520 (1379-4.0)		
ALTERNATE	(1649-4.4)	(1879-6.0)		

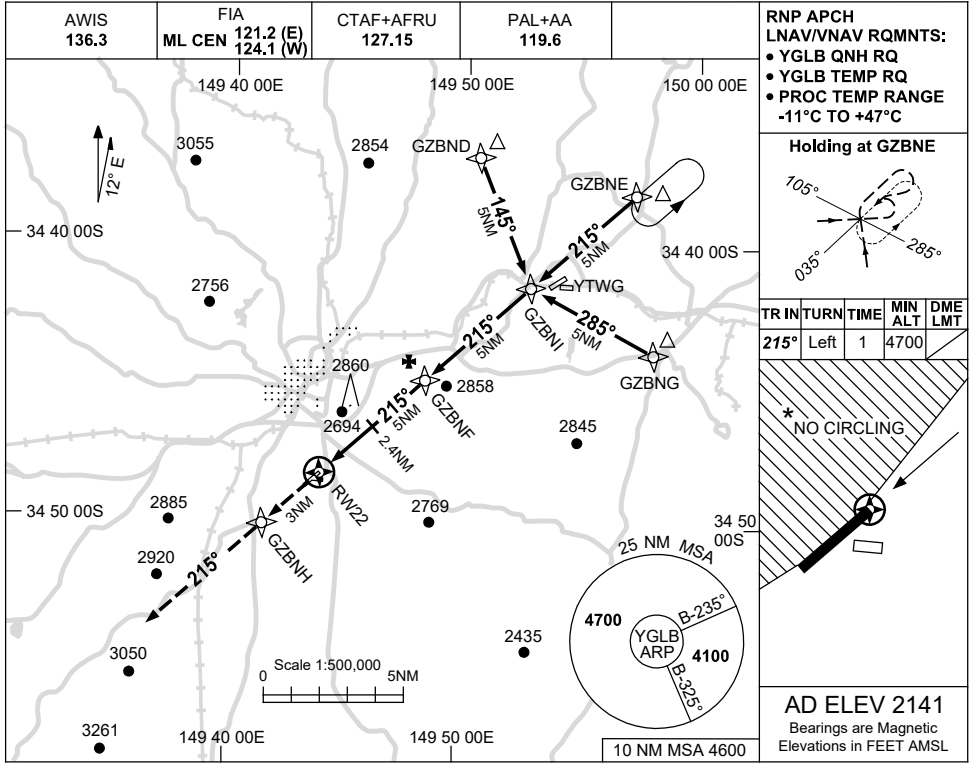
Changes: GZBSB HOLD ALT.

GLBGN01-175

15 JUN 2023

USE QNH

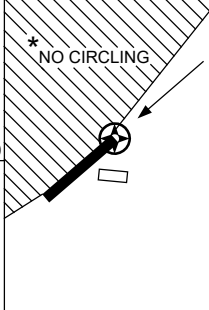
RNP RWY 22  
GOULBURN, NSW (YGLB)



RNP APCH  
LNAV/VNAV RQMTS:  
• YGLB QNH RQ  
• YGLB TEMP RQ  
• PROC TEMP RANGE  
-11°C TO +47°C

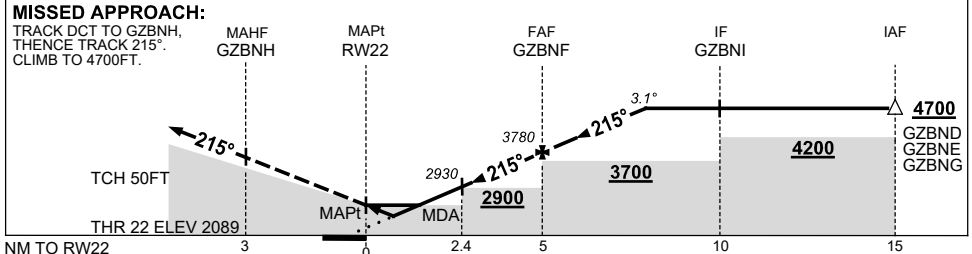


TR IN	TURN	TIME	MIN ALT	DME LMT
215°	Left	1	4700	



AD ELEV 2141  
Bearings are Magnetic  
Elevations in FEET AMSL

NM TO NEXT WPT	RW22	1.2	2	2.4	3	4	GZBNF	1	2	2.8			
ALT (3.1° APCH PATH)		2520	2810	2930	3130	3460	3780	4110	4440	4700			



**NOTES**

1. MAX IAS: INITIAL : 210KT.
- \* 2. NO CIRCLING N OF RWY 04/22.

CATEGORY	A	B	C	D
LNAV/VNAV	2520 (431-2.4)			NOT APPLICABLE
LNAV	2810 (721-4.0)			
CIRCLING *	3290 (1149-2.4)		3520 (1379-4.0)	
ALTERNATE	(1649-4.4)		(1879-6.0)	

Changes: GFY OPS SYMBOL REMOVED, Editorial.

GLBGN02-175

