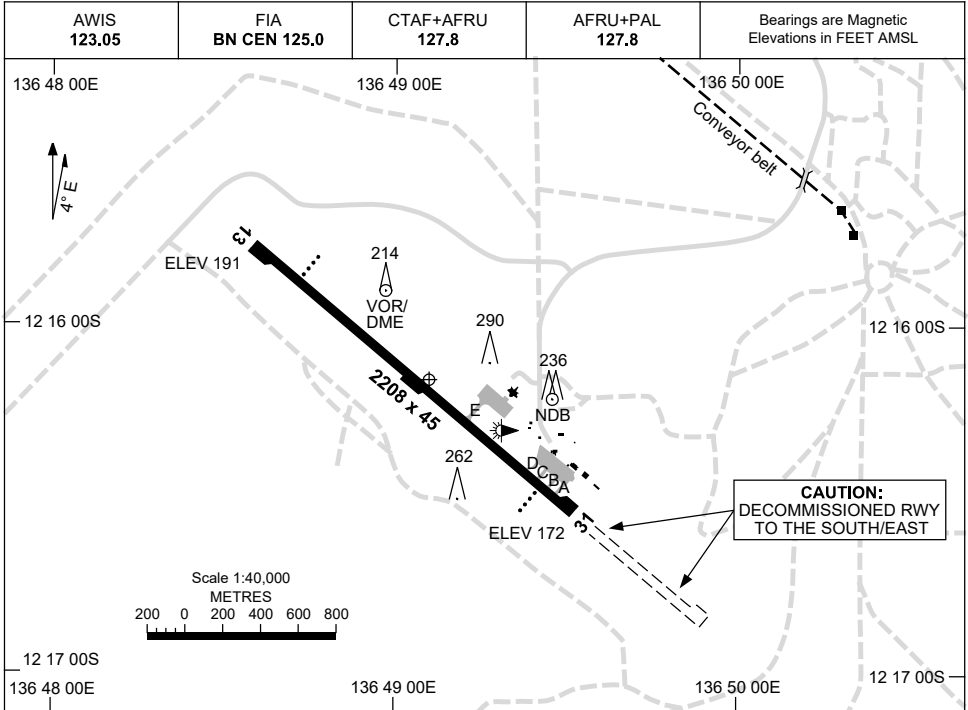


13 JUN 2024

AD ELEV 205
12 16 10S 136 49 06E

AERODROME CHART
GOVE, NT (YPGV)



	AERODROME LIGHTING
RWY	TAXIWAY : BLUE EDGE RL : AFRU+PAL 127.8 , SDBY
13 ¹²⁶ 306 31	PAPI 3.0° 52FT LIRL PAPI 3.0° 52FT LIRL

NOTES

1. AWIS RQ ONE-SECOND PULSE TO ACTIVATE.

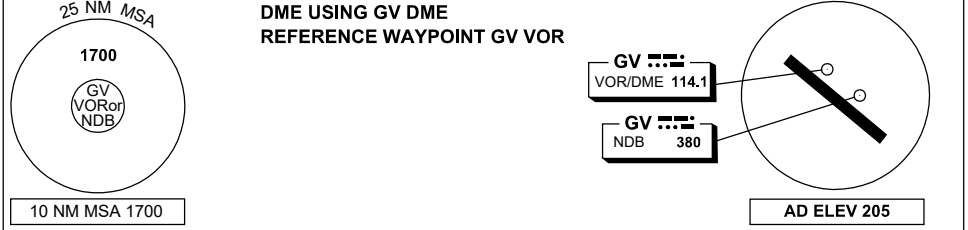
Changes: IWI RELOCATED, Editorial.

PGVAD01-179

DME or GNSS ARRIVAL PROCEDURES GOVE, NT (YPGV)

5 SEP 2024

AWIS 123.05	FIA BN CEN 125.0	CTAF+AFRU 127.8	AFRU+PAL 127.8		Bearings are Magnetic Elevations in FEET AMSL
----------------	---------------------	--------------------	-------------------	--	--



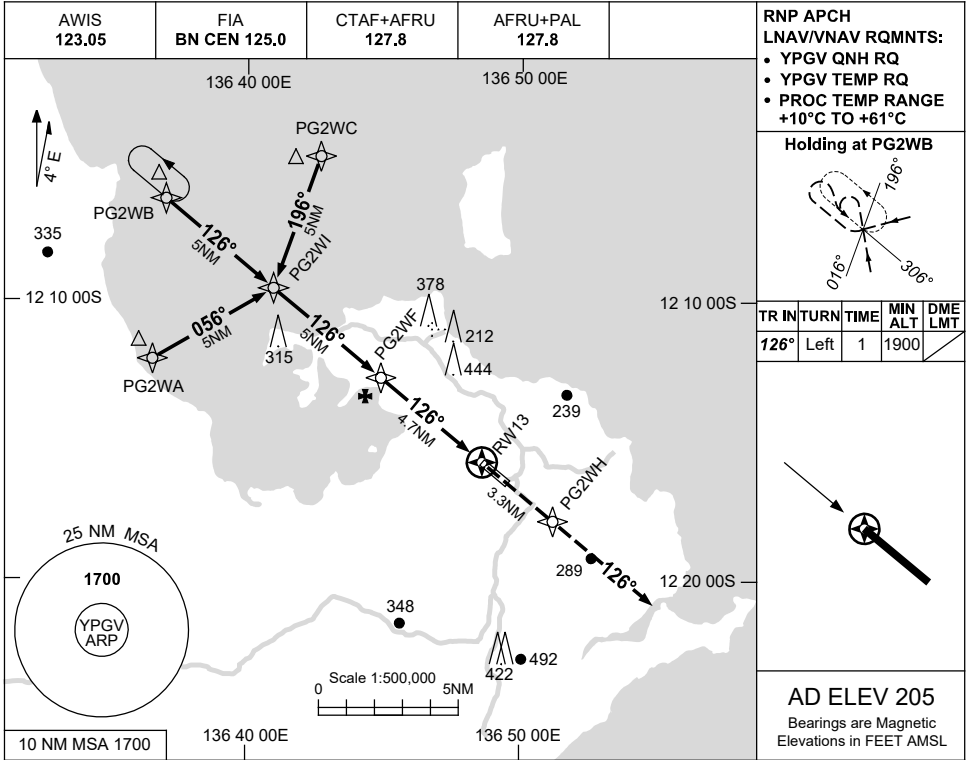
<p>ALL TRACKS TO GV VOR or NDB</p>		<p>VOR or NDB</p>										<p>MISSED APPROACH: CLIMB ON TRACK TO 1700FT.</p>							
	<p>NM TO GV VOR</p>	25	15	9	5	4	0												
	<p>CIRCLING MINIMA</p>				A,B: 850-2.4	C: 940-4.0	D: 1010-5.0												
<p>NM TO GV VOR</p>	5.7	5	4	3.2	3	2.7													
<p>ALT (3° APCH PATH)</p>	1800	1580	1260	1010	940	850													

Changes: MINIMA, DIST-ALT TABLE.

USE QNH

RNP RWY 13
GOVE, NT (YPGV)

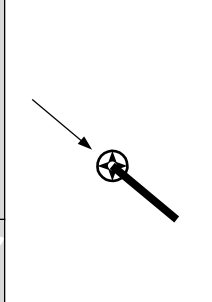
5 SEP 2024



RNP APCH
LNAV/VNAV RQMTS:
• YPGV QNH RQ
• YPGV TEMP RQ
• PROC TEMP RANGE
+10°C TO +61°C

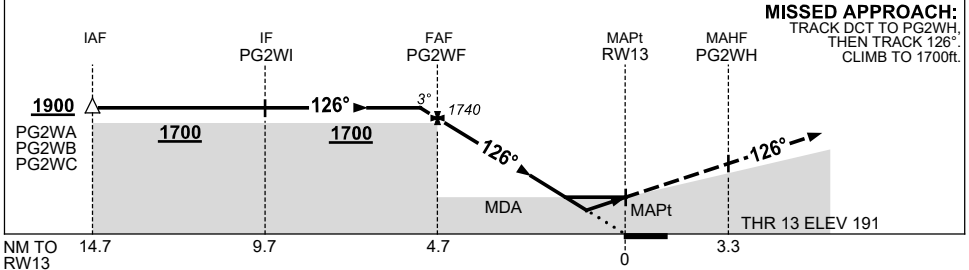
Holding at PG2WB

TR IN	TURN	TIME	MIN ALT	DME LMT
126°	Left	1	1900	



AD ELEV 205
Bearings are Magnetic
Elevations in FEET AMSL

NM TO NEXT WPT	0.5	PG2WF	4	3	2	1.5	0.9	RW13
ALT (3° APCH PATH)	1900	1740	1510	1200	880	730	540	



MISSED APPROACH:
TRACK DCT TO PG2WH,
THEN TRACK 126°.
CLIMB TO 1700ft.

NOTES

CATEGORY	A	B	C	D
LNAV/VNAV	540 (349-1.9)			
LNAV	730 (539-3.1)			
CIRCLING	840 (635-2.4)	940 (735-4.0)	1010 (805-5.0)	
ALTERNATE	(1135-4.4)	(1235-6.0)	(1305-7.0)	

1. MAX IAS:
INITIAL : 240KT.

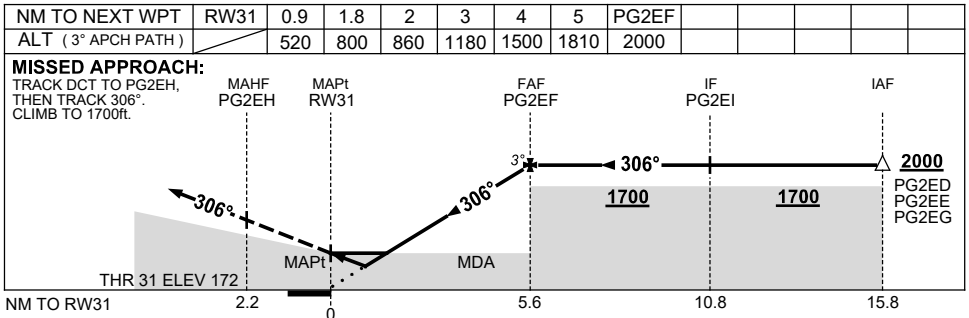
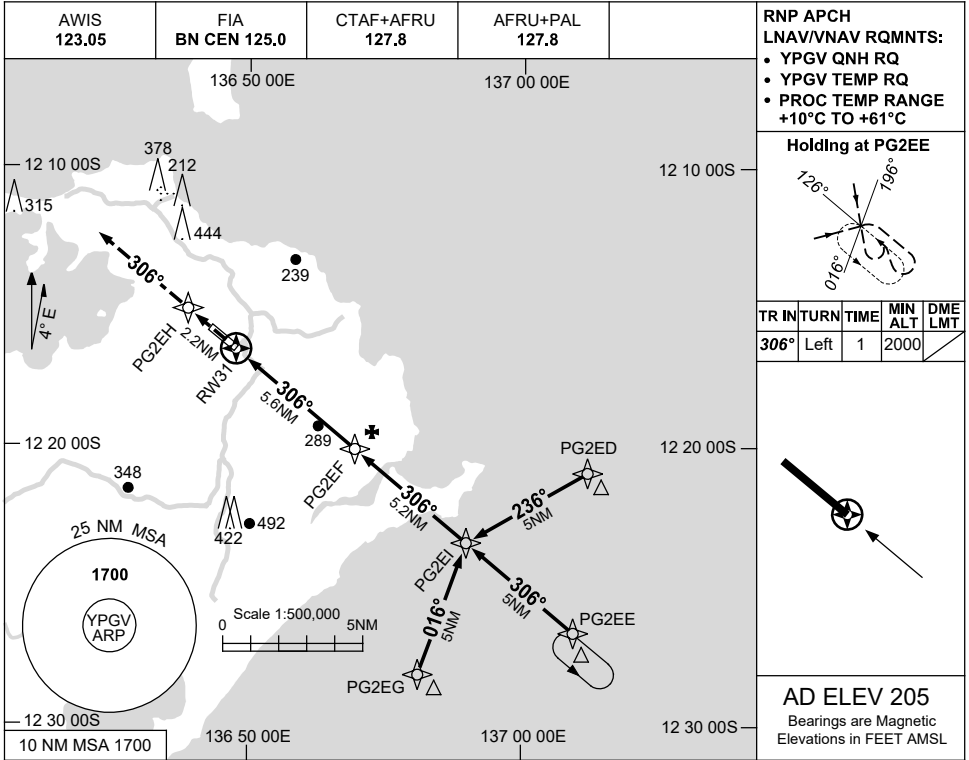
Changes: LNAV/VNAV, DIST-ALT TABLE, MAPt, MISSED APCH TRACK.

PGVGN01-180

USE QNH

RNP RWY 31
GOVE, NT (YPGV)

5 SEP 2024



NOTES

1. MAX IAS:
INITIAL : 240KT.

CATEGORY	A	B	C	D
LNAV/VNAV	520 (348-1.9)			
LNAV	800 (628-3.6)			
CIRCLING	840 (635-2.4)		940 (735-4.0)	
ALTERNATE	(1135-4.4)		(1305-7.0)	

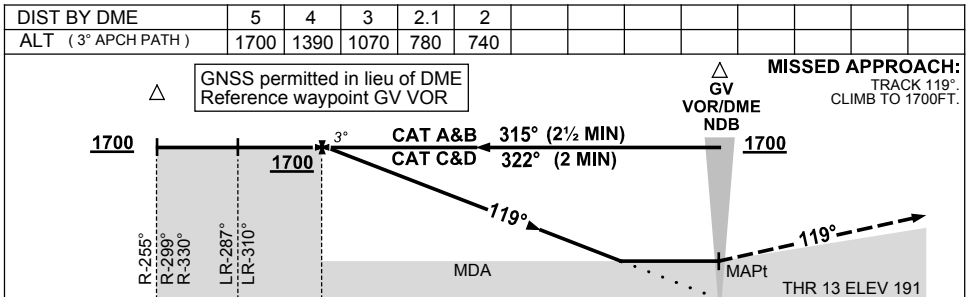
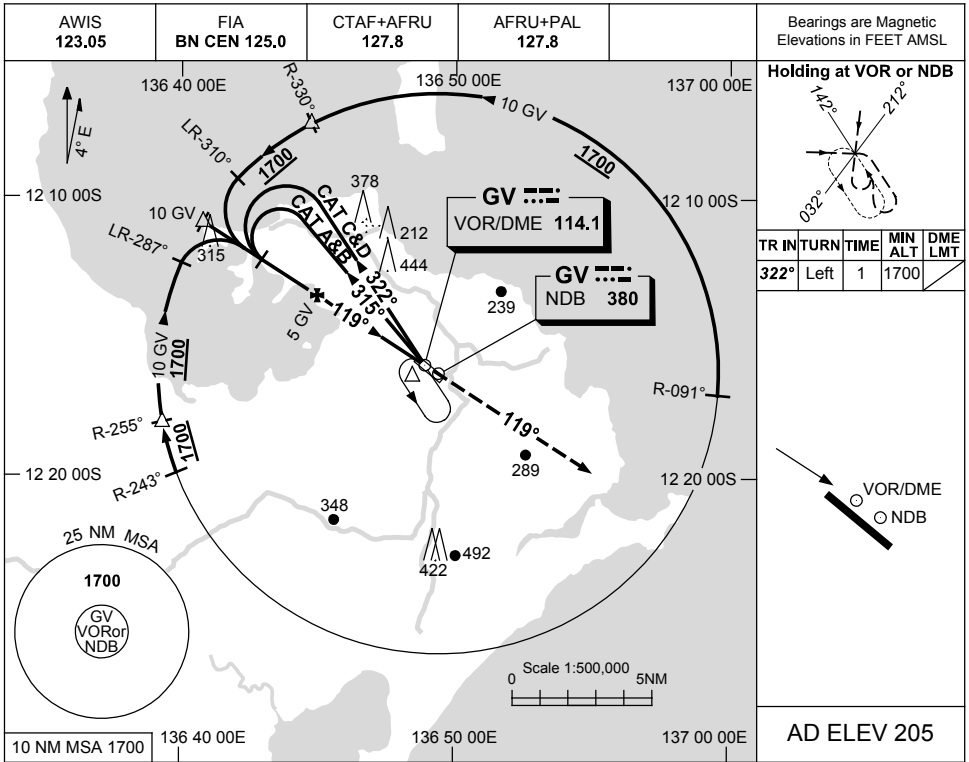
Changes: LNAV/VNAV, DIST-ALT TABLE, MAPt, MISSED APCH TRACK.

PGVGN02-180

USE QNH

NDB or VOR RWY 13
GOVE, NT (YPGV)

15 JUN 2023



NOTES

1. MAX IAS:
INITIAL : 210KT.

CATEGORY	A	B	C	D
S-I VOR or NDB		780 (589-3.3)		
S-I WITH DME		740 (549-3.1)		
CIRCLING	840 (635-2.4)		940 (735-4.0)	1010 (805-5.0)
ALTERNATE	(1135-4.4)		(1235-6.0)	(1305-7.0)

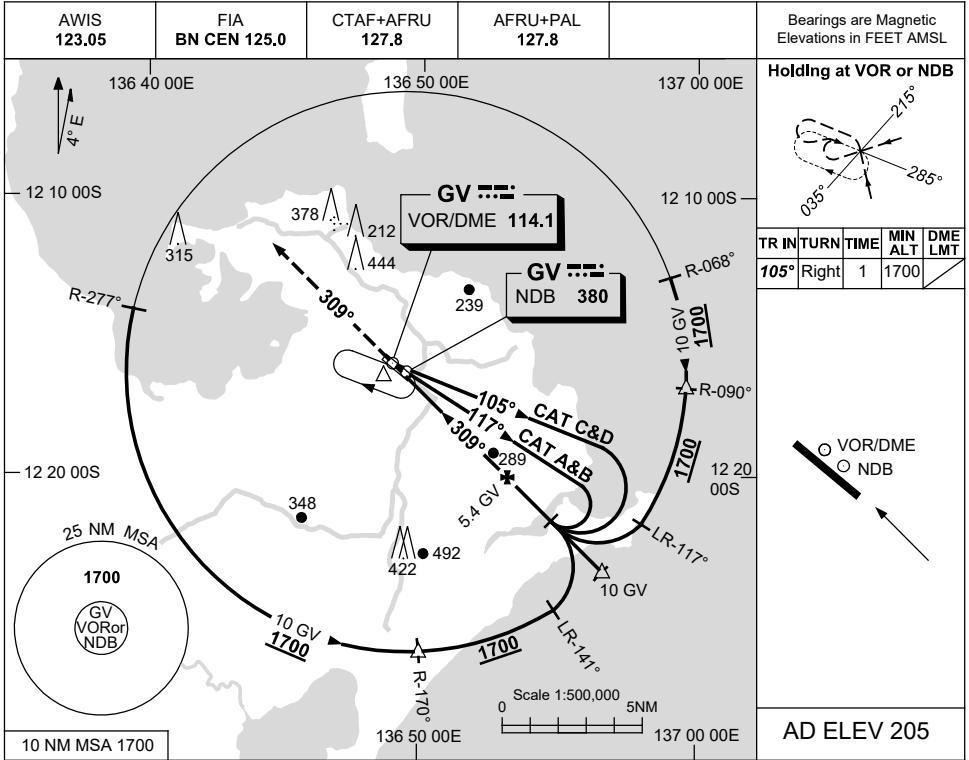
Changes: THR ELEV, Editorial.

PGVNB01-175

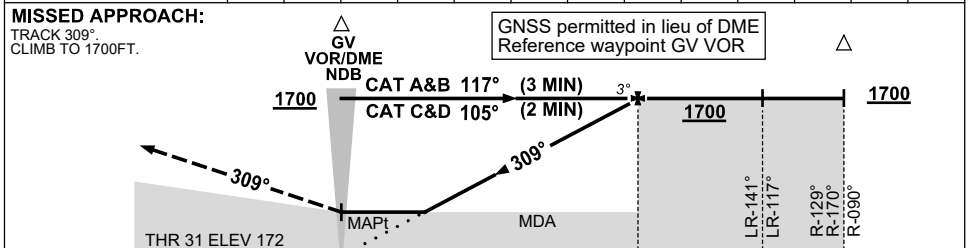
USE QNH

NDB or VOR RWY 31
GOVE, NT (YPGV)

15 JUN 2023



DIST BY DME	2.6	2.8	3	4	5	5.4							
ALT (3° APCH PATH)	800	840	920	1230	1550	1700							



NM BY DME	0	5.4	10	10
-----------	---	-----	----	----

NOTES

CATEGORY	A	B	C	D
S-I VOR or NDB		840 (668-3.8)		
S-I WITH DME		800 (628-3.6)		
CIRCLING	840 (635-2.4)	940 (735-4.0)	1010 (805-5.0)	
ALTERNATE	(1135-4.4)	(1235-6.0)	(1305-7.0)	

1. MAX IAS:
INITIAL : 210KT.

Changes: THR ELEV, Editorial.

PGVNB02-175