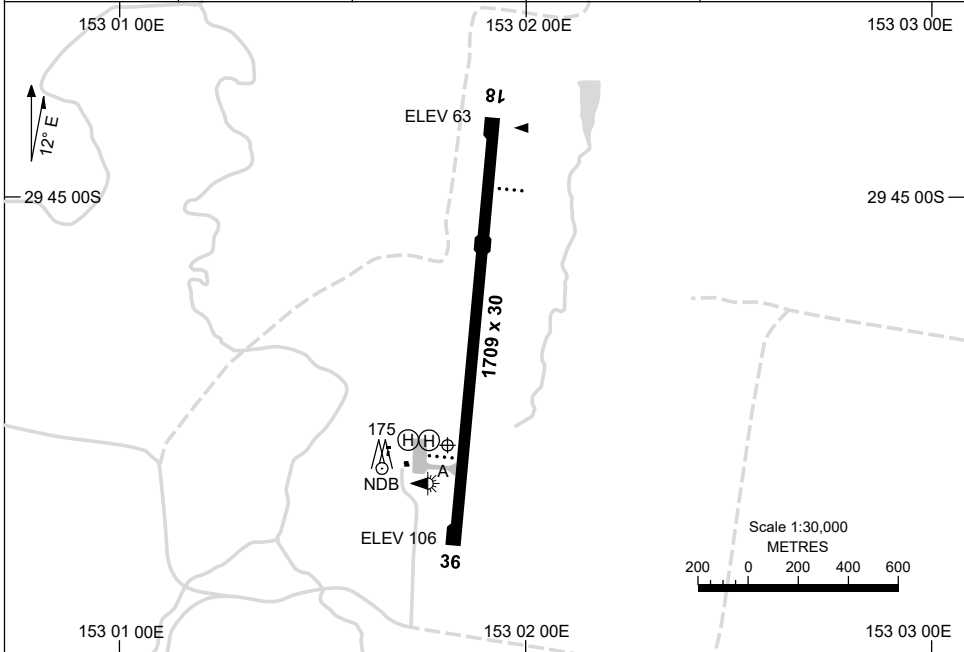


23 MAR 2023

AD ELEV 110
29 45 34S 153 01 48E

AERODROME CHART
GRAFTON, NSW (YGFN)

AWIS 126.225	FIA BN CEN 122.6	CTAF+AFRU 126.7	AFRU+PAL 126.7	Bearings are Magnetic Elevations in FEET AMSL
-----------------	---------------------	--------------------	-------------------	--



RWY	AERODROME LIGHTING	
	TAXIWAY :	BLUE EDGE
	RL :	AFRU+PAL 126.7 , SDBY PWR (15 SEC)
18 <small>174</small>	PAPI 3.0°	42FT LIRL
<small>354</small> 36	PAPI 3.0°	42FT LIRL

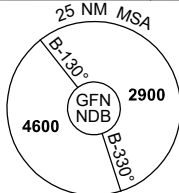
NOTES

Changes: TWY A, APRON AND HEL.

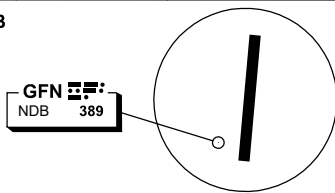
GFNAD01-174

25 MAR 2021

AWIS 126.225	FIA BN CEN 122.6	CTAF+AFRU 126.7	AFRU+PAL 126.7		Bearings are Magnetic Elevations in FEET AMSL
-----------------	---------------------	--------------------	-------------------	--	--



REFERENCE WAYPOINT GFN NDB



10 NM MSA 2500

AD ELEV 110

SECTOR A

MISSED APPROACH:
CLIMB ON TRACK TO 2500FT. PASSING 1500FT TURN RIGHT, TRACK DIRECT TO GFN NDB.

NM TO GFN NDB	25	20	15	13	6	3	0										
CIRCLING MINIMA	A,B: 780-2.4		C: 940-4.0		D: N/A												
NM TO GFN NDB	13.7	13	12	11	10	9	8	7	6	5	4	3	2.2	2	1.7		
ALT (3° APCH PATH)	4600	4380	4060	3750	3430	3110	2790	2470	2160	1840	1520	1200	940	880	780		

SECTOR B

MISSED APPROACH:
CLIMB ON TRACK TO 2500FT. PASSING 1500FT TURN RIGHT, TRACK DIRECT TO GFN NDB.

NM TO GFN NDB	25	15	13	7	6	3	0										
CIRCLING MINIMA	A,B: 780-2.4		C: 940-4.0		D: N/A												
NM TO GFN NDB	6.9	6	5	4	3	2	1	0.6	0.1								
ALT (3° APCH PATH)	2900	2650	2330	2020	1700	1380	1060	940	780								

SECTOR C

MISSED APPROACH:
CLIMB ON TRACK TO 2500FT. PASSING 2000FT TURN RIGHT, TRACK DIRECT TO GFN NDB.

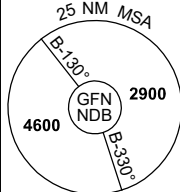
NM TO GFN NDB	25	15	12	6	3	0											
CIRCLING MINIMA	A,B: 780-2.4		C: 940-4.0		D: N/A												
NM TO GFN NDB	12.7	12	11	10	9	8	7	6	5	4	3	2	1.2	1	0.7		
ALT (3° APCH PATH)	4600	4370	4050	3730	3410	3090	2770	2460	2140	1820	1500	1180	940	860	780		

Changes: Editorial.

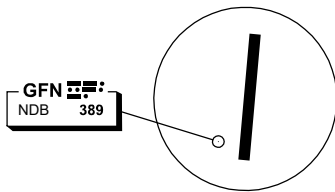
GFNDG01-166

25 MAR 2021

AWIS 126.225	FIA BN CEN 122.6	CTAF+AFRU 126.7	AFRU+PAL 126.7		Bearings are Magnetic Elevations in FEET AMSL
-----------------	---------------------	--------------------	-------------------	--	--



REFERENCE WAYPOINT GFTN NDB



10 NM MSA 2500

AD ELEV 110

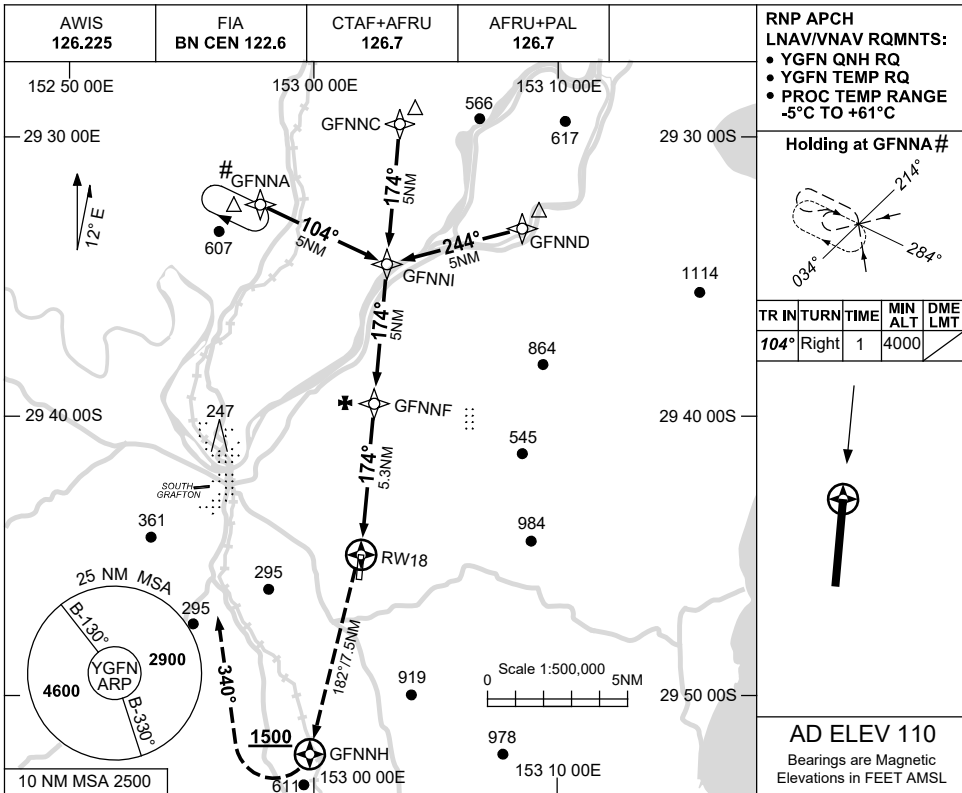
SECTOR D 												MISSED APPROACH: CLIMB ON TRACK TO 2500FT. PASSING 1500FT TURN RIGHT, TRACK DIRECT TO GFTN NDB.													
	NM TO GFTN NDB 25 18 15 10 7 6 3 0																								
CIRCLING MINIMA											A,B: 850-2.4		C: 940-4.0		D: N/A										
NM TO GFTN NDB											14	13	12	11	10	9	8	7	6	5	4	3	2.5	2.2	
ALT (3° APCH PATH)											4600	4280	3960	3650	3330	3010	2690	2370	2060	1740	1420	1100	940	850	

USE QNH

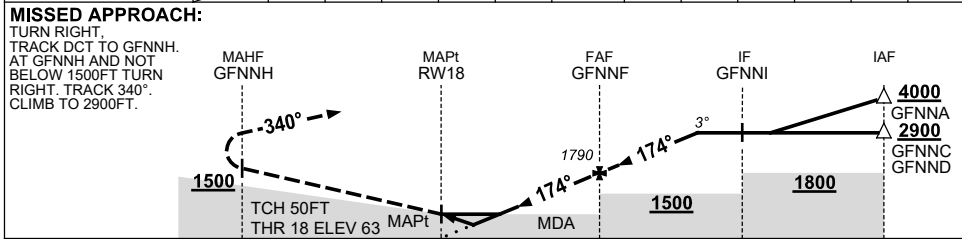
RNP RWY 18

GRAFTON, NSW (YGFN)

2 DEC 2021



NM TO NEXT WPT	RW18	0.9	1.5	2	3	4	GFNNF	1	2	3	3.5		
ALT (3° APCH PATH)		400	600	750	1070	1390	1790	2110	2430	2750	2900		



NOTES

CATEGORY	A	B	C	D
LNAV/VNAV		400 (337-1.9)		NOT APPLICABLE
LNAV		600 (537-3.0)		
CIRCLING	780 (670-2.4)		940 (830-4.0)	
ALTERNATE	(1170-4.4)		(1330-6.0)	

- MAX IAS:
HOLDING: 210KT.
INITIAL : 210KT.
- HOLDING OVERLAYS
PROC AT YXMA,
PRESCRIBED MINIMUM
ALTITUDE ENSURES
SEPARATION

Changes: CHART TITLE, PBN SPECIFICATION BOX.

GFNGN01-169

