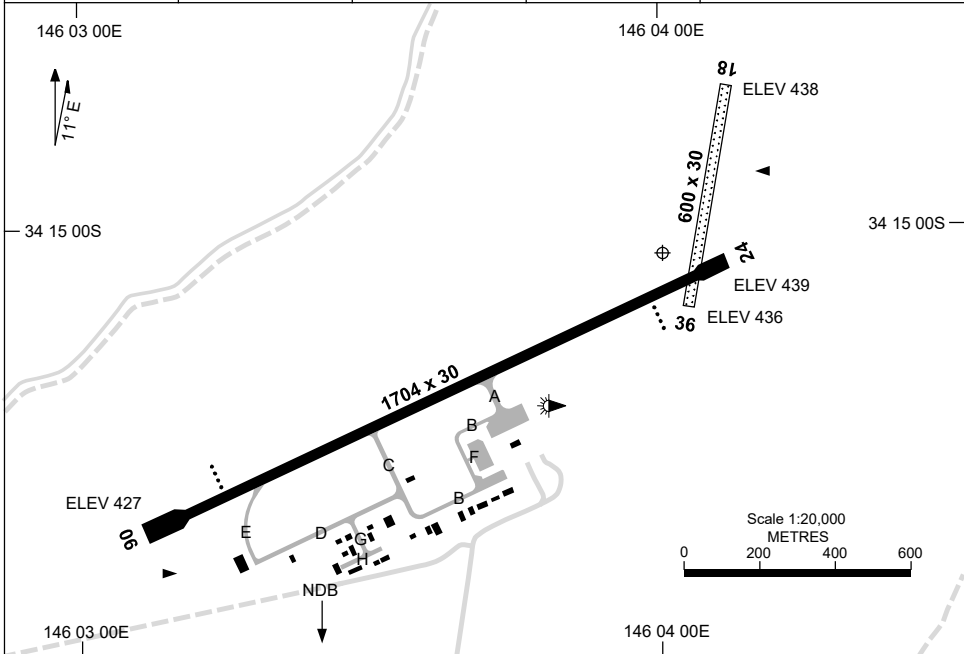


28 NOV 2024

AD ELEV 439  
34 15 03S 146 04 02E

**AERODROME CHART**  
**GRIFFITH, NSW (YGTH)**

AWIS 132.95	FIA ML CEN 134.65	CTAF+AFRU 126.55	AFRU+PAL 126.55	Bearings are Magnetic Elevations in FEET AMSL
----------------	----------------------	---------------------	--------------------	--



RWY		AERODROME LIGHTING
		TAXIWAY : BLUE EDGE TWY A, GREEN CL REFLECTORS TWY B RL : AFRU+PAL 126.55 , SDBY (60 SEC)
<b>06</b> <sup>055</sup>		PAPI 3.0° 39.4FT LIRL
<sup>235</sup> <b>24</b>		PAPI 3.0° 39.4FT LIRL
<b>18</b> <sup>178</sup>		NIL
<sup>358</sup> <b>36</b>		NIL

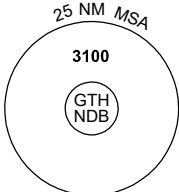
**NOTES**

Changes: SWITCHOVER TIME.

GTHAD01-181


**5 NOV 2020**

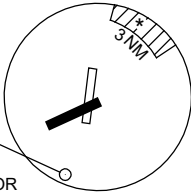
AWIS 132.95	FIA ML CEN 134.65	CTAF+AFRU 126.55	AFRU+PAL 126.55		Bearings are Magnetic Elevations in FEET AMSL
----------------	----------------------	---------------------	--------------------	--	--



10 NM MSA 3100

**REFERENCE WAYPOINT GTH NDB**

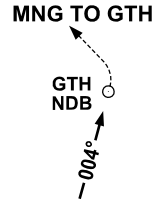


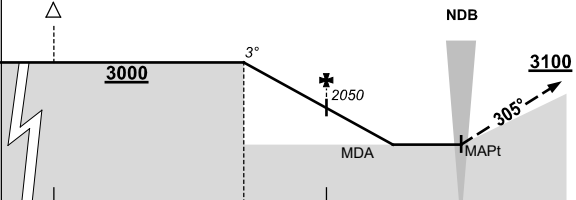


\* NO CIRCLING IN SECTOR  
NE OF RWYS 06 & 36  
BEYOND 3NM.

AD ELEV 439

**MNG TO GTH**



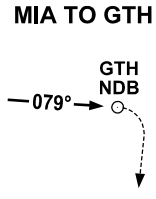


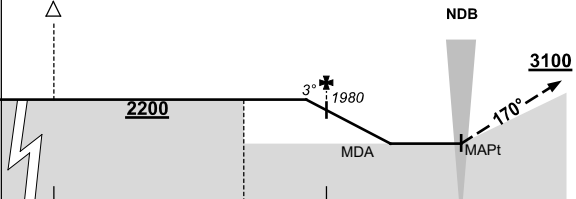
**MISSED APPROACH:**

TURN LEFT,  
TRACK 305°. CLIMB TO 3100FT.

NM TO GTH NDB	25	15	8	5	0														
<b>CIRCLING MINIMA</b>				<b>A,B: 1240-2.4</b>	<b>C: 1340-4.0</b>	<b>D: N/A</b>													
NM TO GTH NDB	8	7	6	5	4	3	2.8	2.5											
ALT (3° APCH PATH)	3000	2680	2360	2050	1730	1410	1340	1240											

**MIA TO GTH**



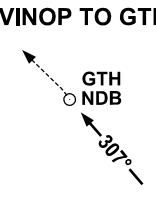


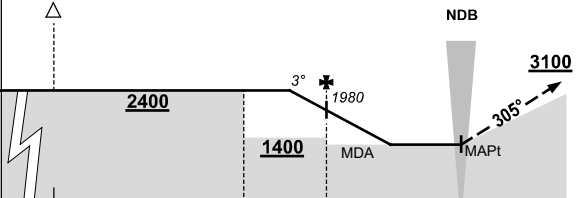
**MISSED APPROACH:**

TURN RIGHT,  
TRACK 170°. CLIMB TO 3100FT.

NM TO GTH NDB	25	15	8	5	0														
<b>CIRCLING MINIMA</b>				<b>A,B: 1240-2.4</b>	<b>C: 1340-4.0</b>	<b>D: N/A</b>													
NM TO GTH NDB	5.7	5	4	3	2.7														
ALT (3° APCH PATH)	2200	1980	1660	1340	1240														

**VINOP TO GTH**





**MISSED APPROACH:**

TURN LEFT,  
TRACK 305°. CLIMB TO 3100FT.

NM TO GTH NDB	25	15	8	5	0														
<b>CIRCLING MINIMA</b>				<b>A,B: 1240-2.4</b>	<b>C: 1340-4.0</b>	<b>D: N/A</b>													
NM TO GTH NDB	6.3	6	5	4	3	2.7													
ALT (3° APCH PATH)	2400	2300	1980	1660	1340	1240													

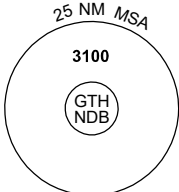
Changes: Editorial.

GTHDG01-165

# GNSS ARRIVAL PROCEDURES GRIFFITH, NSW (YGTH) Page 2

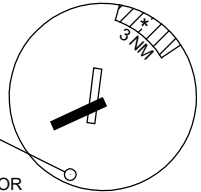
5 NOV 2020

AWIS 132.95	FIA ML CEN 134.65	CTAF+AFRU 126.55	AFRU+PAL 126.55		Bearings are Magnetic Elevations in FEET AMSL
----------------	----------------------	---------------------	--------------------	--	--



25 NM MSA  
3100  
GTH NDB

**REFERENCE WAYPOINT GTH NDB**



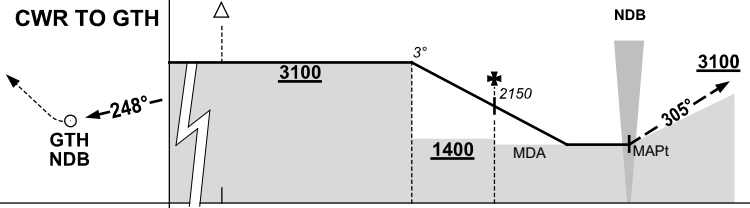
3 NM

10 NM MSA 3100

**GTH NDB 305**

**AD ELEV 439**

\* NO CIRCLING IN SECTOR  
NE OF RWYS 06 & 36  
BEYOND 3NM.

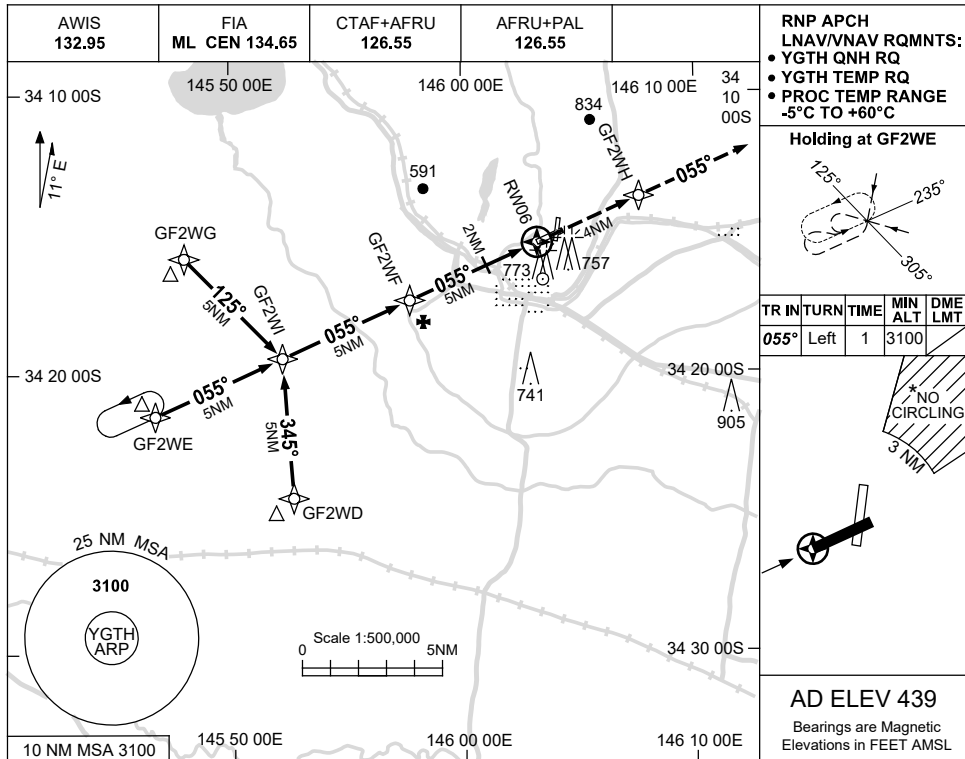
<b>CWR TO GTH</b>											<b>MISSED APPROACH:</b> TURN RIGHT, TRACK 305°. CLIMB TO 3100FT.				
NM TO GTH NDB	25	15	8	5	0										
<b>CIRCLING MINIMA</b>	A,B: 1240-2.4				C: 1340-4.0		D: N/A								
NM TO GTH NDB	8	7	6	5	4	3	2.5	2.2							
ALT (3° APCH PATH)	3100	2780	2460	2150	1830	1510	1340	1240							

USE QNH

RNP RWY 06

GRIFFITH, NSW (YGTH)

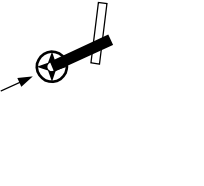
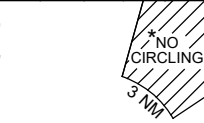
15 JUN 2023



RNP APCH  
LNAV/VNAV RQMTS:  
• YGTH QNH RQ  
• YGTH TEMP RQ  
• PROC TEMP RANGE  
-5°C TO +60°C

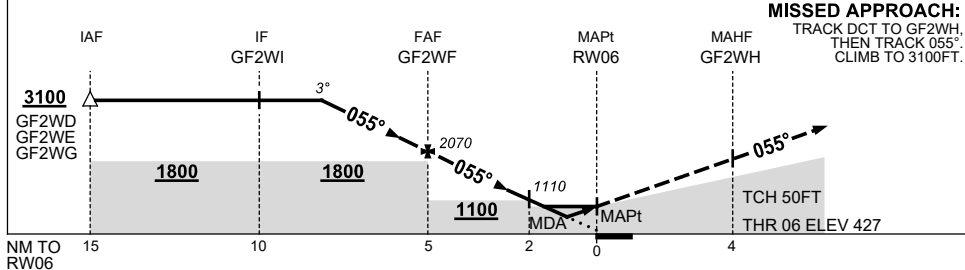


TR IN	TURN	TIME	MIN ALT	DME LMT
055°	Left	1	3100	



AD ELEV 439  
Bearings are Magnetic  
Elevations in FEET AMSL

NM TO NEXT WPT	3.2	3	2	1	GF2WF	4	3	2	1.8	1.4	RW06		
ALT (3° APCH PATH)	3100	3020	2710	2390	2070	1750	1430	1110	1050	930			



NOTES

CATEGORY	A	B	C	D
LNAV/VNAV		930 (503-2.8)		NOT APPLICABLE
LNAV		1050 (623-3.5)		
CIRCLING *	1240 (801-2.4)		1340 (901-4.0)	
ALTERNATE	(1301-4.4)		(1401-6.0)	

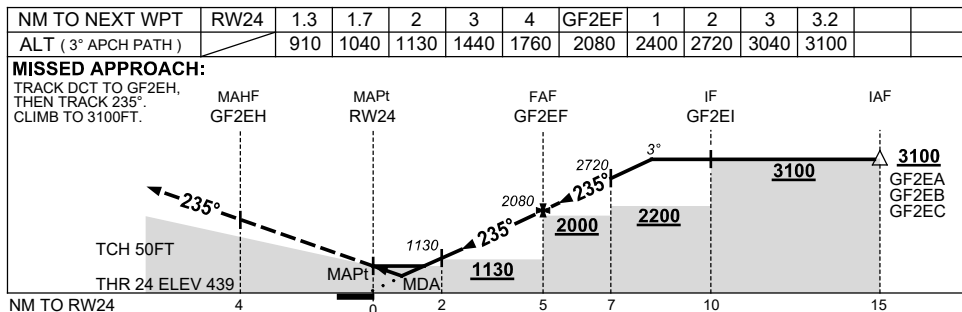
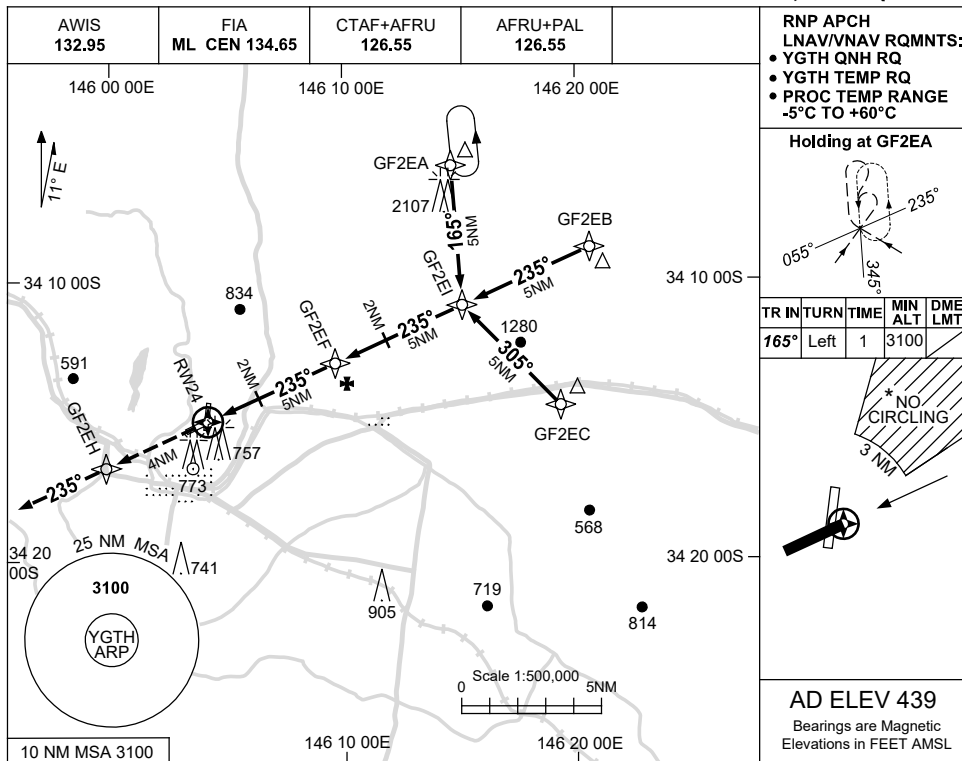
- MAX IAS:  
INITIAL : 210KT.
- \* NO CIRCLING IN  
SECTOR NE OF  
RWYS 06 & 36  
BEYOND 3NM.

Changes: CHART TITLE, PBN SPECIFICATION BOX, Editorial. GTHGN01-175

USE QNH

RNP RWY 24  
**GRIFFITH, NSW (YGTH)**

15 JUN 2023



**NOTES**

CATEGORY	A	B	C	D
LNAV/VNAV		<b>910 (471-2.7)</b>		<b>NOT APPLICABLE</b>
LNAV		<b>1040 (601-3.4)</b>		
CIRCLING *	<b>1240 (801-2.4)</b>		<b>1340 (901-4.0)</b>	
ALTERNATE	(1301-4.4)		(1401-6.0)	

1. MAX IAS: INITIAL : 210KT.
- \* 2. NO CIRCLING IN SECTOR NE OF RWYS 06 & 36 BEYOND 3NM.

Changes: CHART TITLE, PBN SPECIFICATION BOX, Editorial.

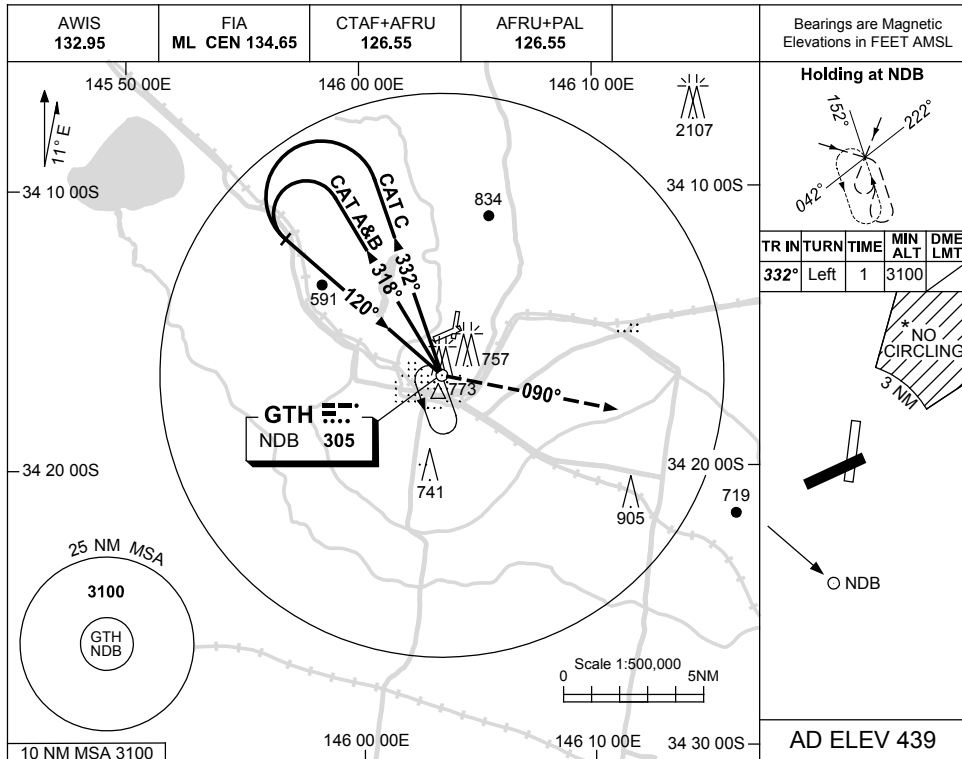
GTHGN02-175

USE QNH

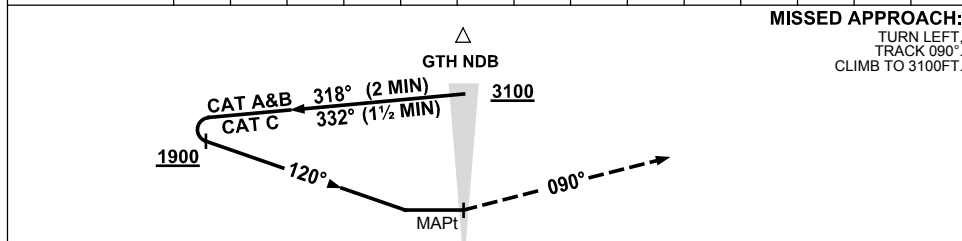
NDB-A

5 NOV 2020

**GRIFFITH, NSW (YGTH)**



DME DIST	NOT APPLICABLE				
ALT					



**NOTES**

CATEGORY	A	B	C	D
CIRCLING *	<b>1240</b> (801-2.4)		<b>1340</b> (901-4.0)	NOT APPLICABLE
ALTERNATE	(1301-4.4)		(1401-6.0)	

1. MAX IAS:  
INITIAL : 210KT.
- \* 2. NO CIRCLING IN SECTOR NE OF RWYS 06 & 36 BEYOND 3NM.

Changes: 2107FT OBST, CAT C OUTBOUND TRACK.

GTHNB01-165