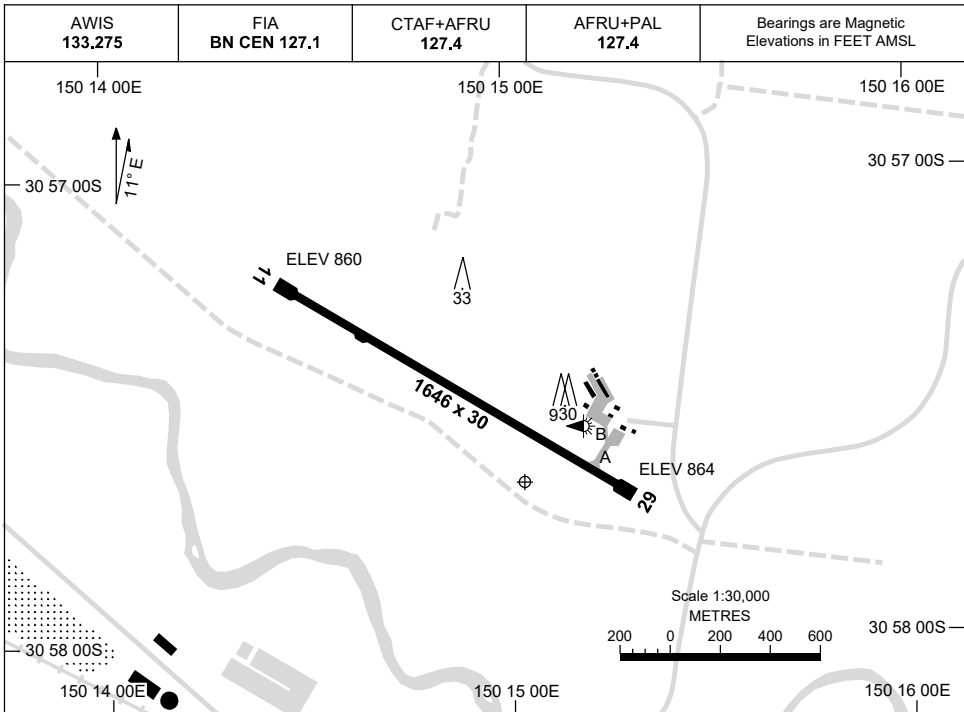


5 SEP 2024

AD ELEV 864  
30 57 40S 150 15 02E

**AERODROME CHART**  
**GUNNEDAH, NSW (YGDH)**



RWY		AERODROME LIGHTING	
11	112	LIRL	
292	29	LIRL	

**NOTES**

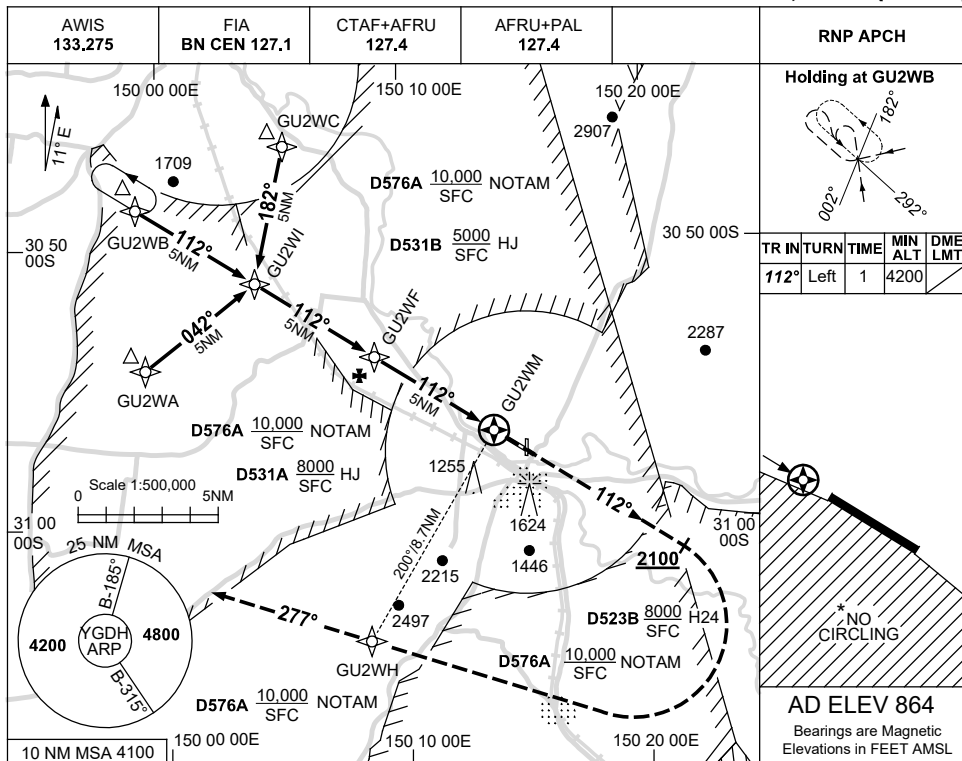
1. AWIS RQ ONE-SECOND PULSE TO ACTIVATE.

USE QNH

RNP RWY 11

28 NOV 2024

GUNNEDAH, NSW (YGDH)



TR	IN	TURN	TIME	MIN ALT	DME LMT
112°	Left	1		4200	

\* NO CIRCLING

**AD ELEV 864**  
Bearings are Magnetic  
Elevations in FEET AMSL

NM TO NEXT WPT	4.6	4	3	2	1	GU2WF	4	3	2	1	0.7	GU2WM
ALT (3° APCH PATH)	4200	4020	3700	3380	3060	2740	2430	2110	1790	1470	1390	

NM TO GU2WM	15	10	5	0	0.8
IAF					
IF		GU2WI			
FAF			GU2WF		
MAHF				GU2WH	
MAPt					GU2WM

**MISSED APPROACH:**  
TRACK 112°, AT OR ABV 2100ft TURN RIGHT, TRACK DCT TO GU2WH, THEN TRACK 277°, CLIMB TO 4200ft.

CATEGORY	A	B	C	D
LNAV	1390 (526-3.0)			NOT APPLICABLE
CIRCLING*	1770 (906-2.4)	1800 (936-4.0)		
ALTERNATE	(1406-4.4)		(1436-6.0)	

**NOTES**  
1. MAX IAS: INITIAL : 210KT.  
\* 2. NO CIRCLING SOUTH OF RWY 11 / 29.

Changes: MISSED APCH TURN ALTITUDE.

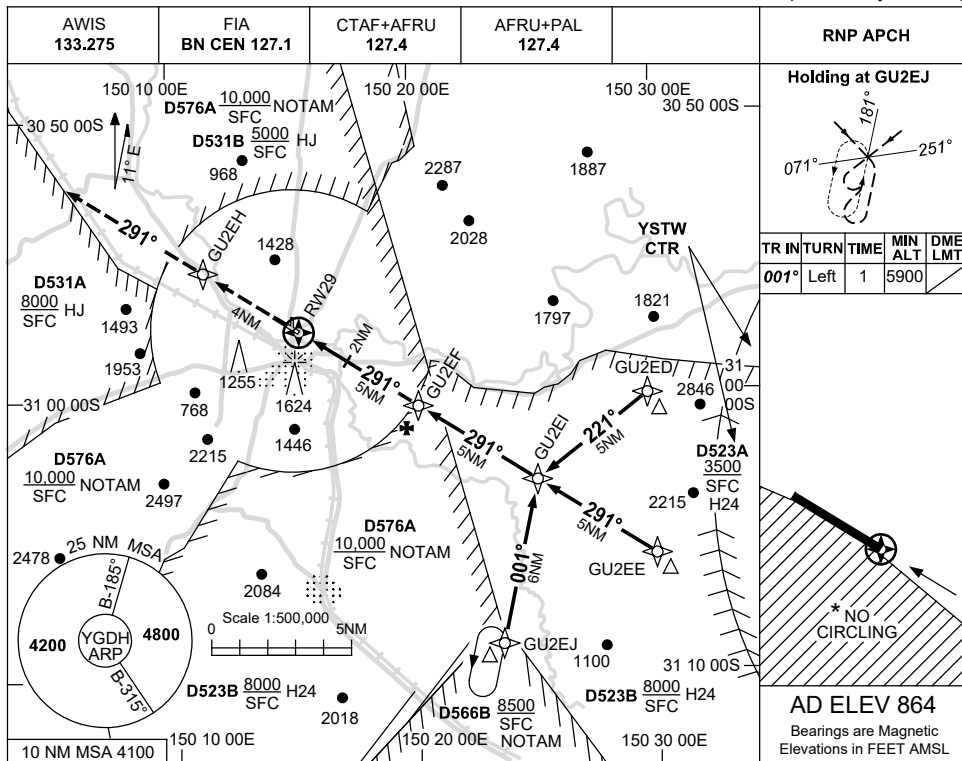
GDHGN01-181

USE QNH

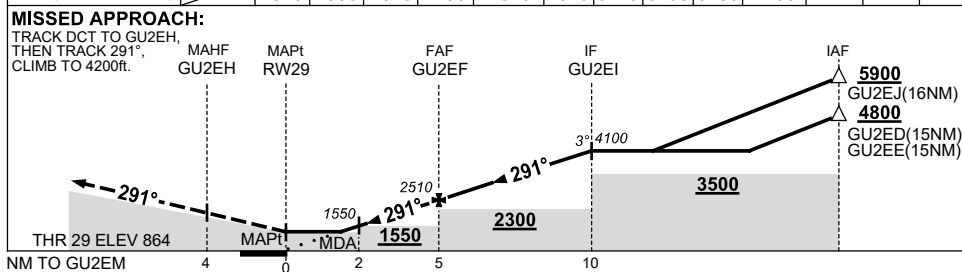
RNP RWY 29

**GUNNEDAH, NSW (YGDH)**

13 JUN 2024



NM TO NEXT WPT	RW29	1.4	2	3	4	GU2EF	1	2	3	4	GU2EI			
ALT (3° APCH PATH)		1370	1550	1870	2190	2510	2820	3140	3460	3780	4100			



CATEGORY	A	B	C	D
LNAV	1370 (506-2.9)			NOT APPLICABLE
CIRCLING *	1770 (906-2.4)		1800 (936-4.0)	
ALTERNATE	(1406-4.4)		(1436-6.0)	

- NOTES**
- MAX IAS: INITIAL : 210KT.
  - NO CIRCLING S OF RWY 11/29.
  - HOLDING OVERLIES YQDI RNP W PROC.

Changes: AWIS FREQ, NOTE 3 REMOVED, Editorial.

GDHGN02-179