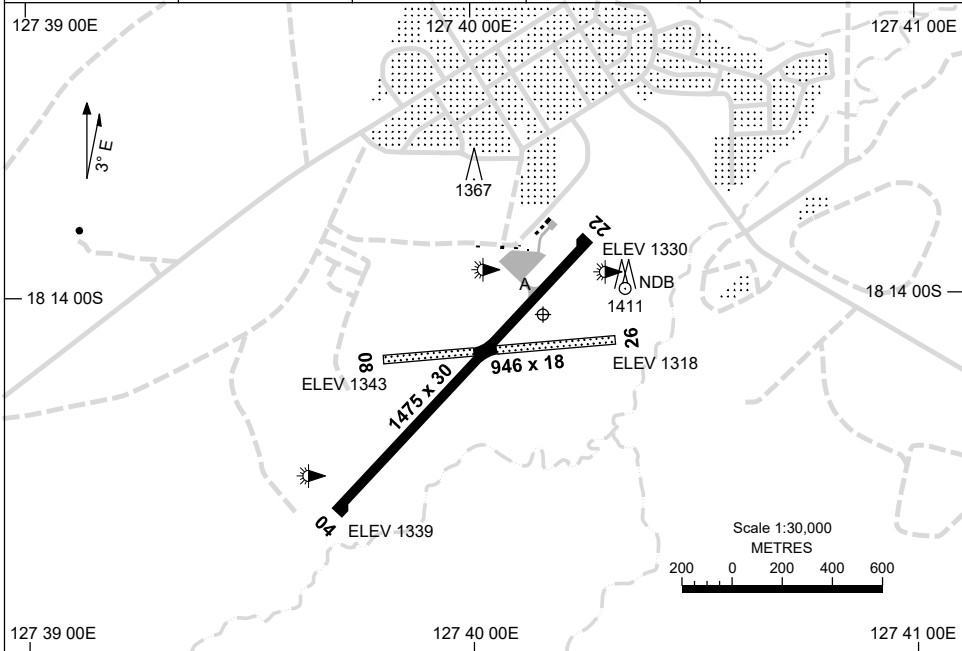


5 SEP 2024

AD ELEV 1346
18 14 02S 127 40 11E

AERODROME CHART
HALLS CREEK, WA (YHLC)

FIA BN CEN 118.2	CTAF+AFRU 126.7	AFRU+PAL 126.7	Bearings are Magnetic Elevations in FEET AMSL
---------------------	--------------------	-------------------	--



RWY		AERODROME LIGHTING
		TAXIWAY : BLUE EDGE RL : AFRU+PAL 126.7
04 <small>041</small>		LIRL
<small>221</small> 22		LIRL
08 <small>083</small>		NIL
<small>263</small> 26		NIL

NOTES

1. AWIS (PHONE) 08 6216 2617

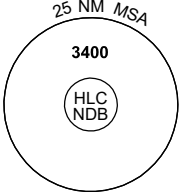
Changes: RWY 08 THR ELEV, Editorial.

HLCAD01-180

GNSS ARRIVAL PROCEDURES HALLS CREEK, WA (YHLC)


15 AUG 2019

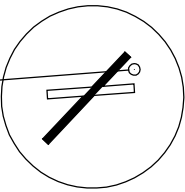
FIA BN CEN 118.2	CTAF+AFRU 126.7	AFRU+PAL 126.7		Bearings are Magnetic Elevations in FEET AMSL
---------------------	--------------------	-------------------	--	--



25 NM MSA
3400
HLC NDB

REFERENCE WAYPOINT HLC NDB
AWIS (PHONE) 08 6216 2617

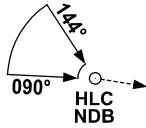


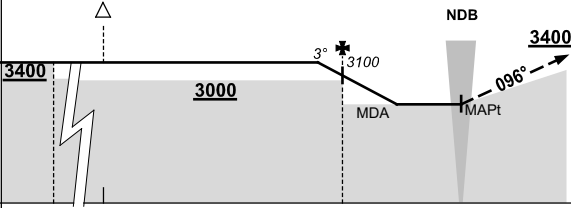


10 NM MSA 3400

AD ELEV 1346

SECTOR A

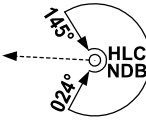


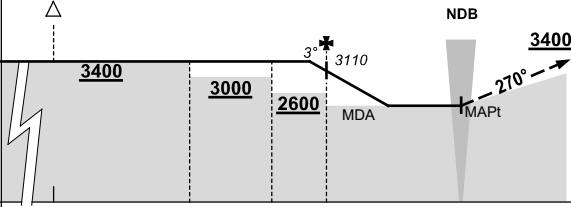


MISSED APPROACH:
TURN AS APPROPRIATE,
TRACK 096°. CLIMB TO 3400FT.

NM TO HLC NDB	25	22	15	5	0												
CIRCLING MINIMA	A,B: 2350-2.4		C: 2450-4.0		D: N/A												
NM TO HLC NDB	6	5	4	3	2.7												
ALT (3° APCH PATH)	3400	3100	2780	2460	2350												

SECTOR B

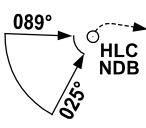


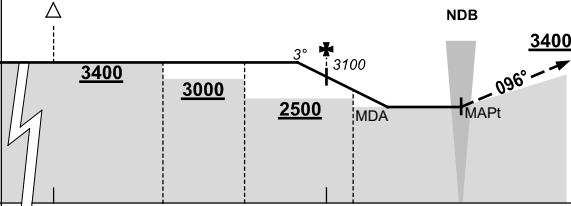


MISSED APPROACH:
TURN AS APPROPRIATE,
TRACK 270°. CLIMB TO 3400FT.

NM TO HLC NDB	25	15	10	7	5	0											
CIRCLING MINIMA	A,B: 2360-2.4		C: 2450-4.0		D: N/A												
NM TO HLC NDB	5.6	5	4	3	2.7												
ALT (3° APCH PATH)	3400	3110	2790	2470	2360												

SECTOR C





MISSED APPROACH:
TURN RIGHT,
TRACK 096°. CLIMB TO 3400FT.

NM TO HLC NDB	25	15	11	8	5	4	0										
CIRCLING MINIMA	A,B: 2350-2.4		C: 2450-4.0		D: N/A												
NM TO HLC NDB	6	5	4	3	2.7												
ALT (3° APCH PATH)	3400	3100	2780	2460	2350												

Changes: AWIS PHONE, Editorial.

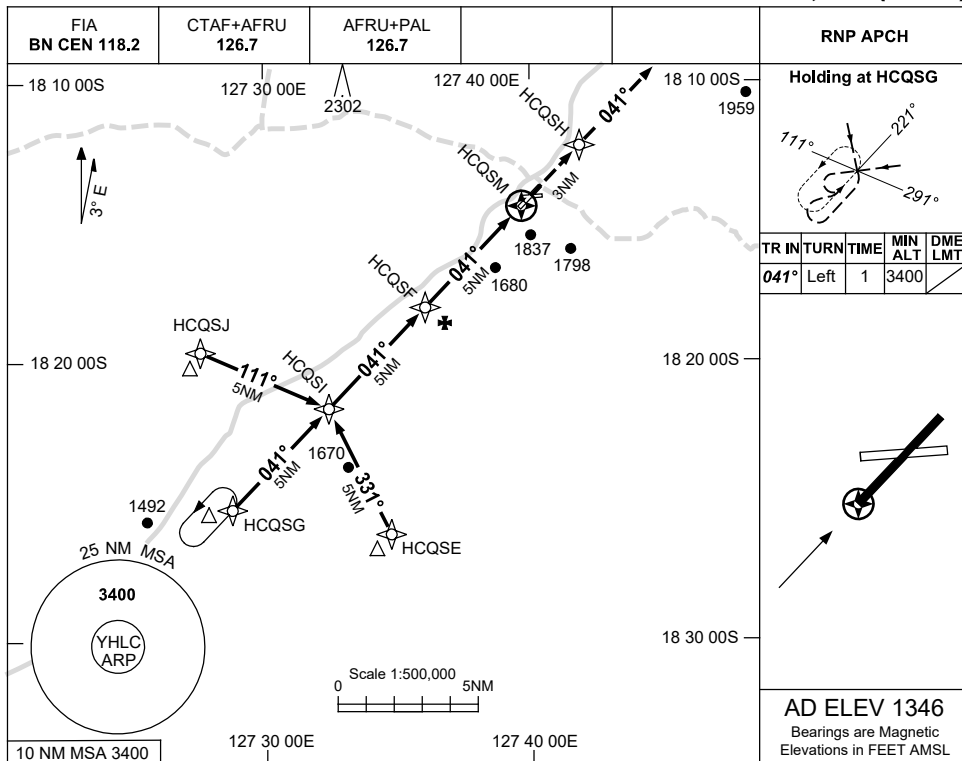
HLC DG01-160

USE QNH

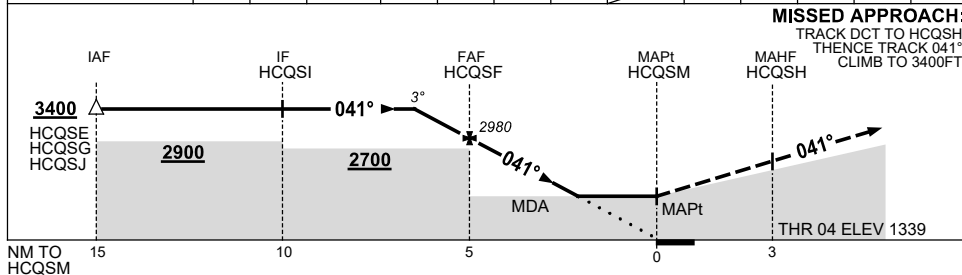
RNP RWY 04

HALLS CREEK, WA (YHLC)

8 SEP 2022



NM TO NEXT WPT	1.3	1	HCQSF	4	3	2	1.7	HCQSM					
ALT (3° APCH PATH)	3400	3300	2980	2660	2340	2030	1940						



NOTES

CATEGORY	A	B	C	D
LNAV	1940 (594-3.4)			NOT APPLICABLE
CIRCLING	2350 (1004-2.4)		2450 (1104-4.0)	
ALTERNATE	(1504-4.4)		(1604-6.0)	

- MAX IAS:
INITIAL : 210KT.
- AWIS (PHONE)
08 6216 2617

Changes: CHART TITLE, PBN SPECIFICATION BOX.

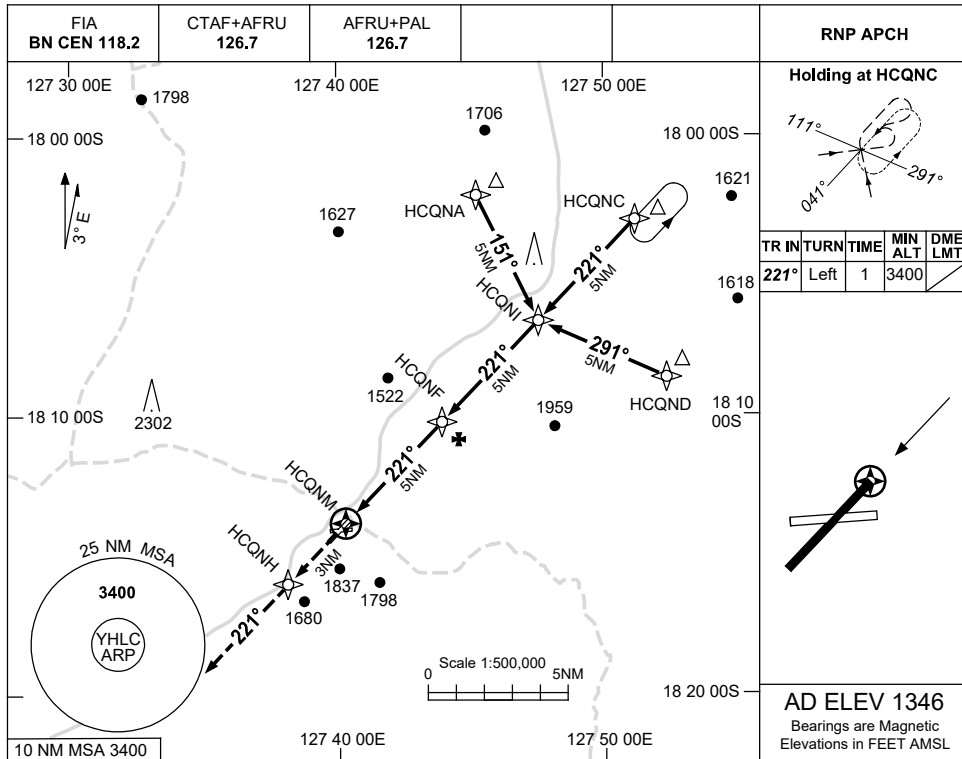
HLCGN01-172

USE QNH

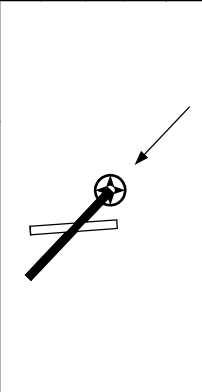
RNP RWY 22

HALLS CREEK, WA (YHLC)

23 MAR 2023

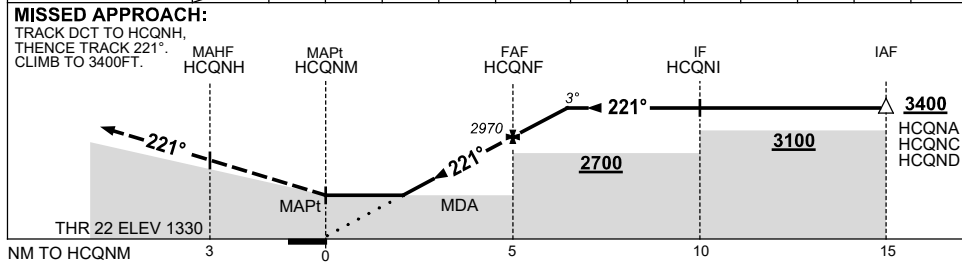


TR	IN	TURN	TIME	MIN ALT	DME LMT
221°	Left	1		3400	



AD ELEV 1346
Bearings are Magnetic
Elevations in FEET AMSL

NM TO NEXT WPT	HCQNM	1.9	2	3	4	HCQNF	1	1.3				
ALT (3° APCH PATH)	1980	2020	2340	2650	2970	3290	3400					



NOTES

- MAX IAS:
INITIAL : 210KT.
- AWIS (PHONE)
08 6216 2617

CATEGORY	A	B	C	D
LNAV	1980 (650-3.7)			NOT APPLICABLE
CIRCLING	2350 (1004-2.4)	2450 (1054-4.0)		
ALTERNATE	(1504-4.4)		(1604-6.0)	

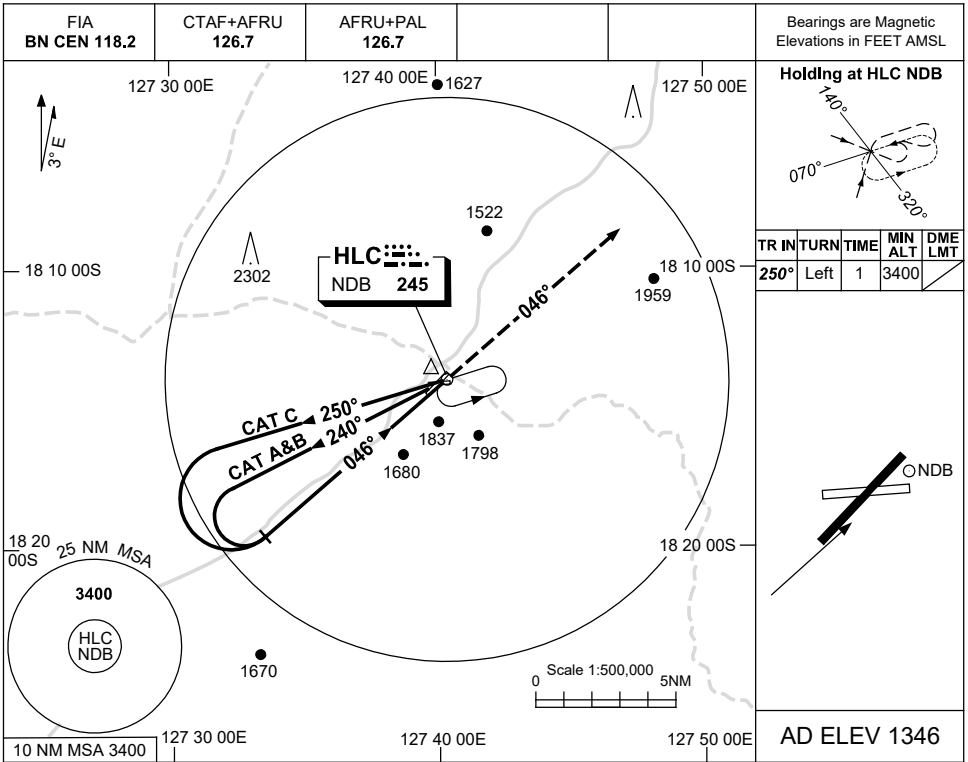
Changes: MISSED APPROACH WAYPOINT.

HLCGN02-174

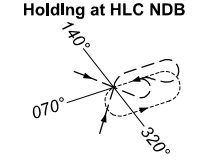
USE QNH

NDB RWY 04
HALLS CREEK, WA (YHLC)

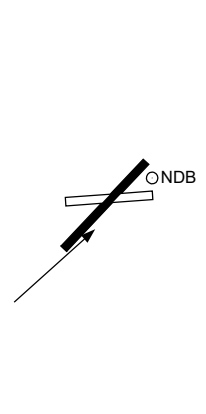
24 MAR 2022



Bearings are Magnetic
Elevations in FEET AMSL

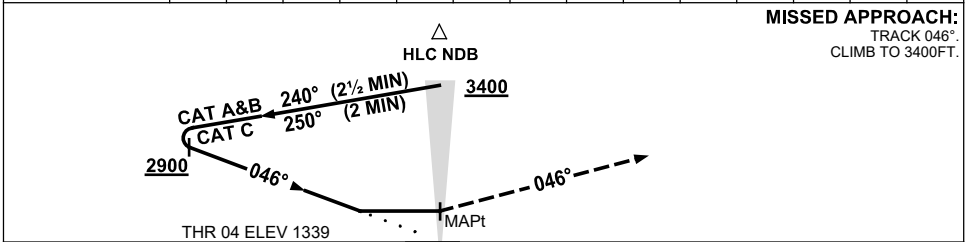


TR	IN	TURN	TIME	MIN	DME
				ALT	LMT
250°	Left	1	3400		



AD ELEV 1346

DME DIST	ALT	NOT APPLICABLE



MISSED APPROACH:
TRACK 046°
CLIMB TO 3400FT.

NOTES

CATEGORY	A	B	C	D
S-I NDB	2220 (874-5.0)			NOT APPLICABLE
CIRCLING	2350 (1004-2.4)	2450 (1104-4.0)		
ALTERNATE	(1504-4.4)	(1604-6.0)		

- MAX IAS:
INITIAL :
CAT A&B 140KT.
CAT C 210KT.
- AWIS (PHONE)
08 6216 2617

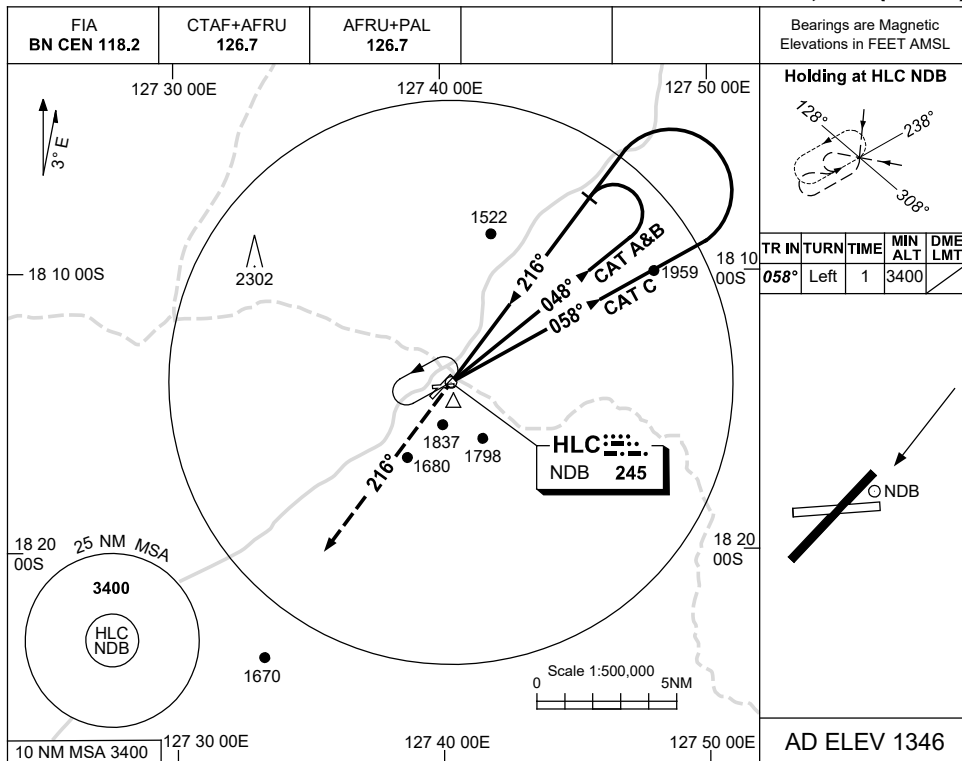
Changes: THR ELEV.

HLCNB01-170

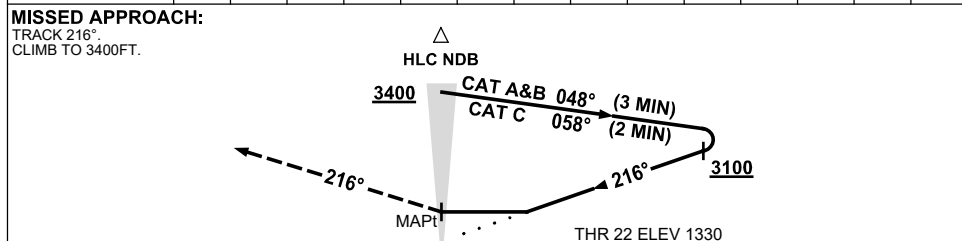
USE QNH

NDB RWY 22
HALLS CREEK, WA (YHLC)

24 MAR 2022



DME DIST					
ALT	NOT APPLICABLE				



NOTES

CATEGORY	A	B	C	D
S-I NDB	2350 (1020-5.0)			NOT APPLICABLE
CIRCLING	2350 (1004-2.4)	2450 (1104-4.0)		
ALTERNATE	(1504-4.4)	(1604-6.0)		

1. MAX IAS:
INITIAL :
CAT A&B 130KT.
CAT C 190KT.
2. AWIS (PHONE)
08 6216 2617

Changes: THR ELEV, S-I MINIMA.

HLCNB02-170