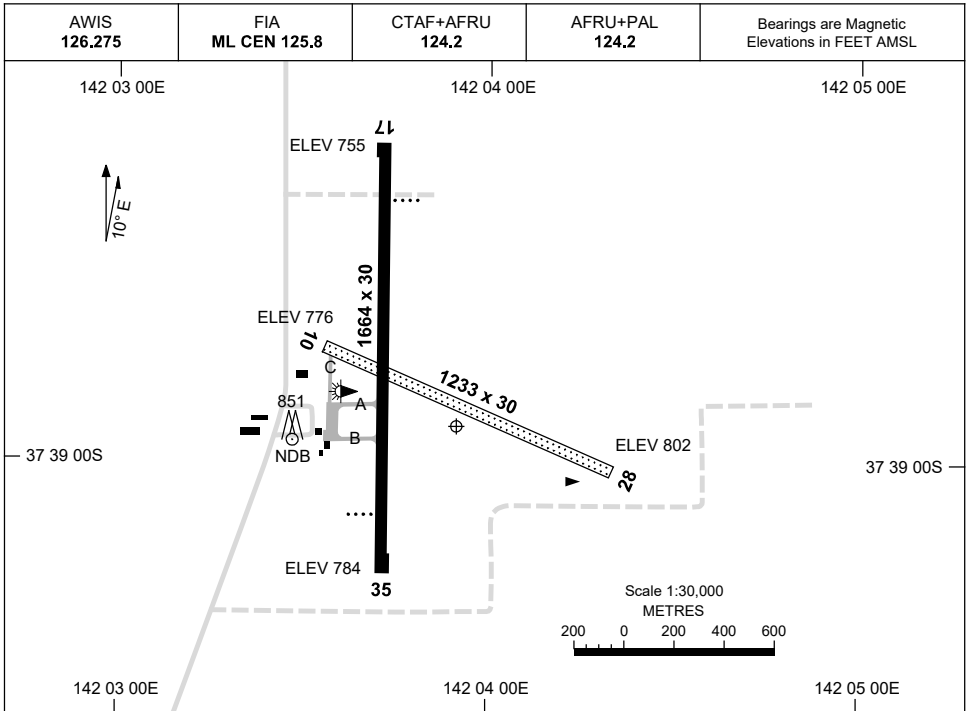


13 JUN 2024

AD ELEV 803  
37 38 56S 142 03 55E

AERODROME CHART  
**HAMILTON, VIC (YHML)**



	<b>AERODROME LIGHTING</b>	
<b>RWY</b>	TAXIWAY : BLUE EDGE TWY A ONLY RL : AFRU+PAL 124.2 , SDBY (30 SEC)	
<b>17</b> <small>170</small>	PAPI 3.0° 28.9FT LIRL	
<small>350</small> <b>35</b>	PAPI 3.0° 22FT LIRL	
<b>10</b> <small>103</small>	NIL	
<small>283</small> <b>28</b>	NIL	

**NOTES**

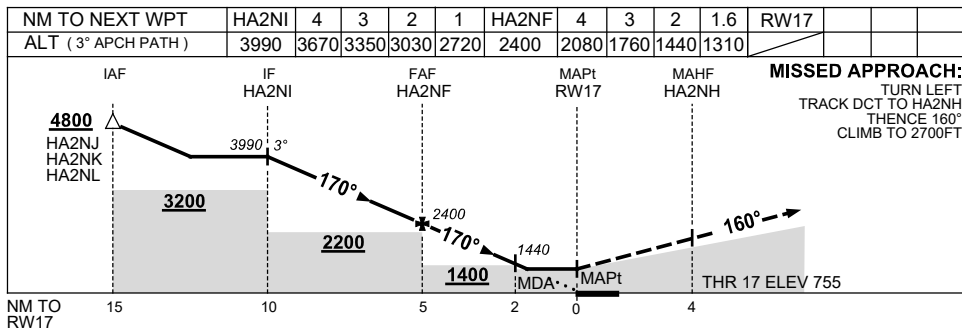
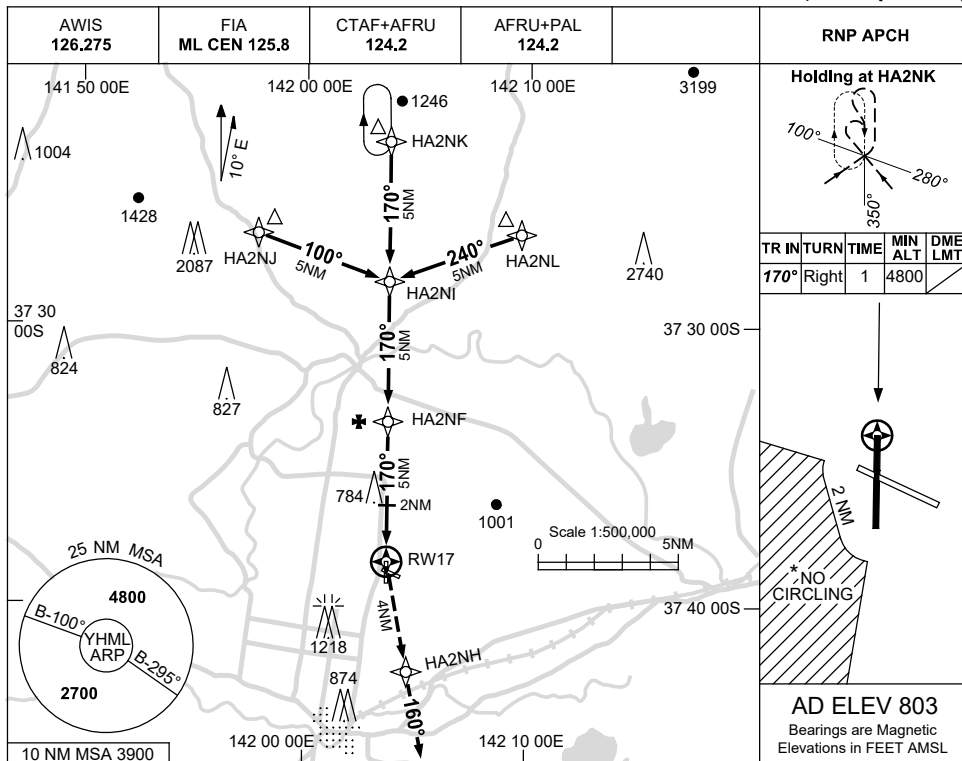
Changes: TWY, THR 35 ELEV, RWY LENGTH.

HMLAD01-179

USE QNH

RNP RWY 17  
HAMILTON, VIC (YHML)

30 NOV 2023



NOTES

CATEGORY	A	B	C	D
LNAV	1310 (555-3.1)			NOT APPLICABLE
CIRCLING *	1450 (647-2.4)		1550 (747-4.0)	
ALTERNATE	(1147-4.4)		(1247-6.0)	

- 1. MAX IAS: INITIAL : 210KT.
- \*2. NO CIRCLING IN SECTOR STH OF RWY 10/28 AND WEST OF RWY 17/35 BEYOND 2NM.

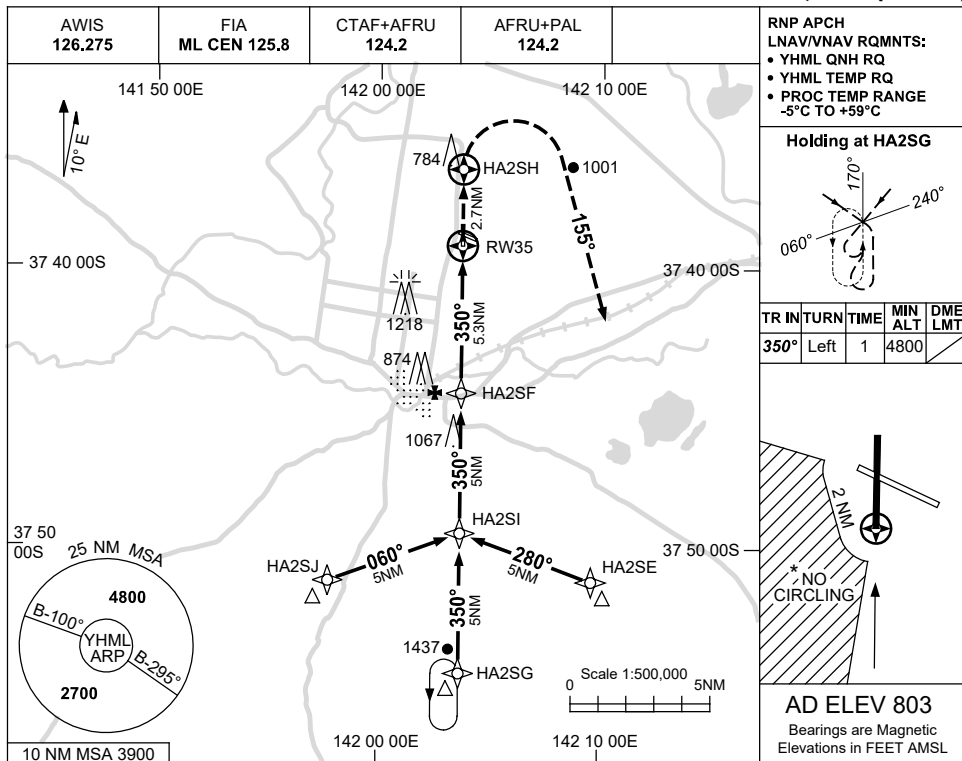
Changes: MINIMA, DIST/ALT TABLE, SDF MOCA, WPT NAMES, NEW LOGO, Editorial.

HMLGN01-177

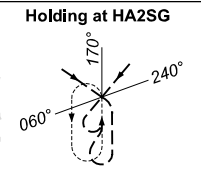
USE QNH

RNP RWY 35  
HAMILTON, VIC (YHML)

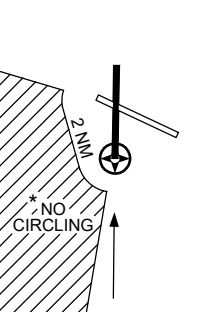
13 JUN 2024



RNP APCH  
LNAV/VNAV RQmnts:  
• YHML QNH RQ  
• YHML TEMP RQ  
• PROC TEMP RANGE  
-5°C TO +59°C

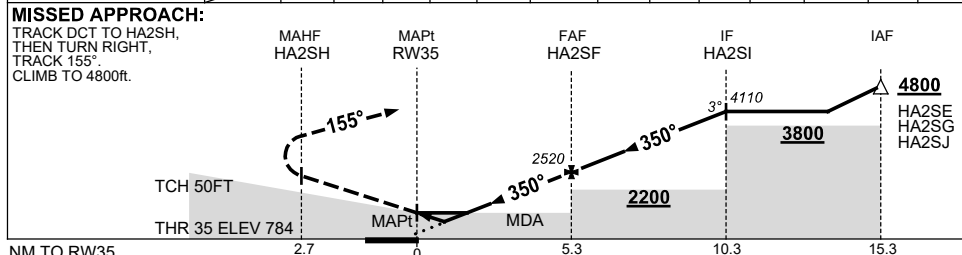


TR IN	TURN	TIME	MIN ALT	DME LMT
350°	Left	1	4800	



**AD ELEV 803**  
Bearings are Magnetic  
Elevations in FEET AMSL

NM TO NEXT WPT	RW35	1	1.6	2	3	4	HA2SF	1	2	3	4	HA2SI		
ALT (3° APCH PATH)		1140	1340	1470	1790	2110	2520	2840	3160	3470	3790	4110		



**NOTES**

CATEGORY	A	B	C	D
LNAV/VNAV		1140 (356-2.0)		NOT APPLICABLE
LNAV		1340 (556-3.2)		
CIRCLING *	1450 (647-2.4)		1550 (747-4.0)	
ALTERNATE	(1147-4.4)		(1247-6.0)	

- MAX IAS:  
INITIAL : 210KT.
- \* 2. NO CIRCLING IN  
SECTOR STH OF RWY  
10/28 AND WEST OF  
RWY 17/35 BEYOND  
2NM.

Changes: DIST-ALT, THR 35 ELEV, ALT AT FAF, ALT AT IF, LNAV/VNAV DH, LNAV MDH.

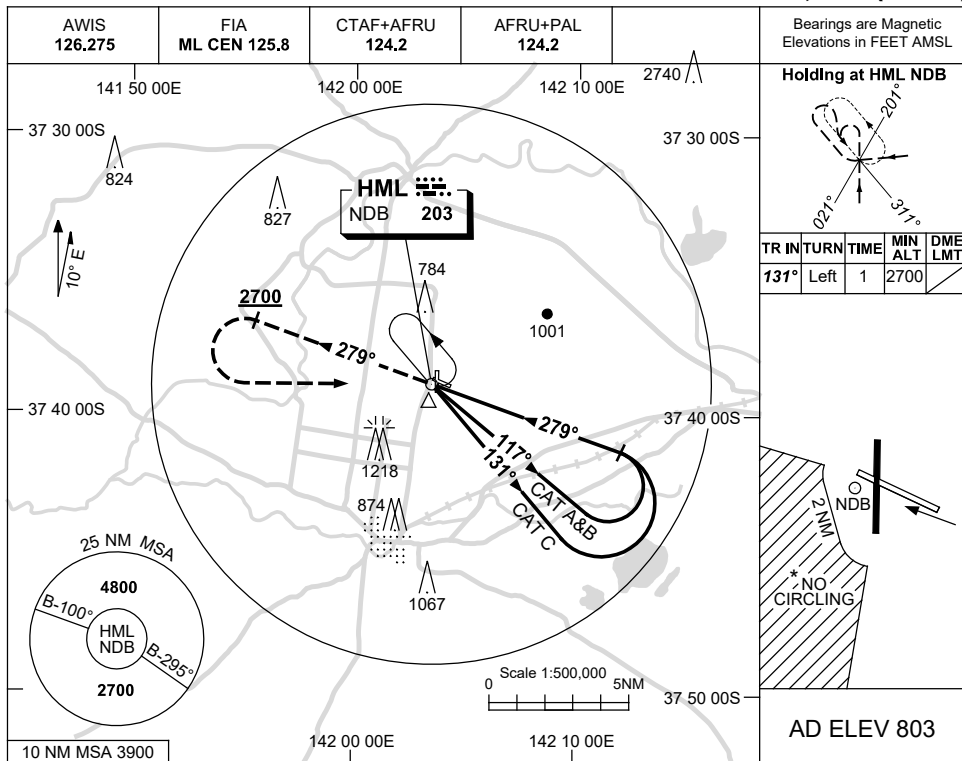
HMLGN02-179

USE QNH

NDB-A

30 NOV 2023

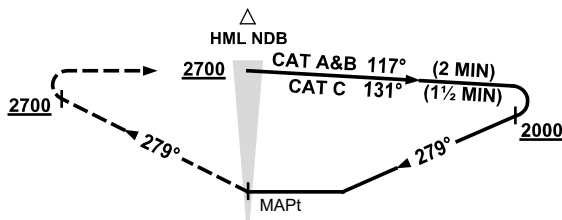
HAMILTON, VIC (YHML)



DME DIST	NOT APPLICABLE									
ALT										

**MISSED APPROACH:**

TRACK 279°.  
CLIMB TO 2700FT.  
AT 2700FT TURN LEFT.  
TRACK DCT TO NDB.



**NOTES**

1. MAX IAS:  
INITIAL : 210KT.
- \*2. NO CIRCLING IN  
SECTOR STH OF RWY  
10/28 AND WEST OF  
RWY 17/35 BEYOND  
2NM.

CATEGORY	A	B	C	D
				NOT APPLICABLE
CIRCLING *	1450 (647-2.4)		1550 (747-4.0)	
ALTERNATE	(1147-4.4)		(1247-6.0)	

Changes: MAG TRACKS, NEW LOGO, Editorial.

HMLNB01-177