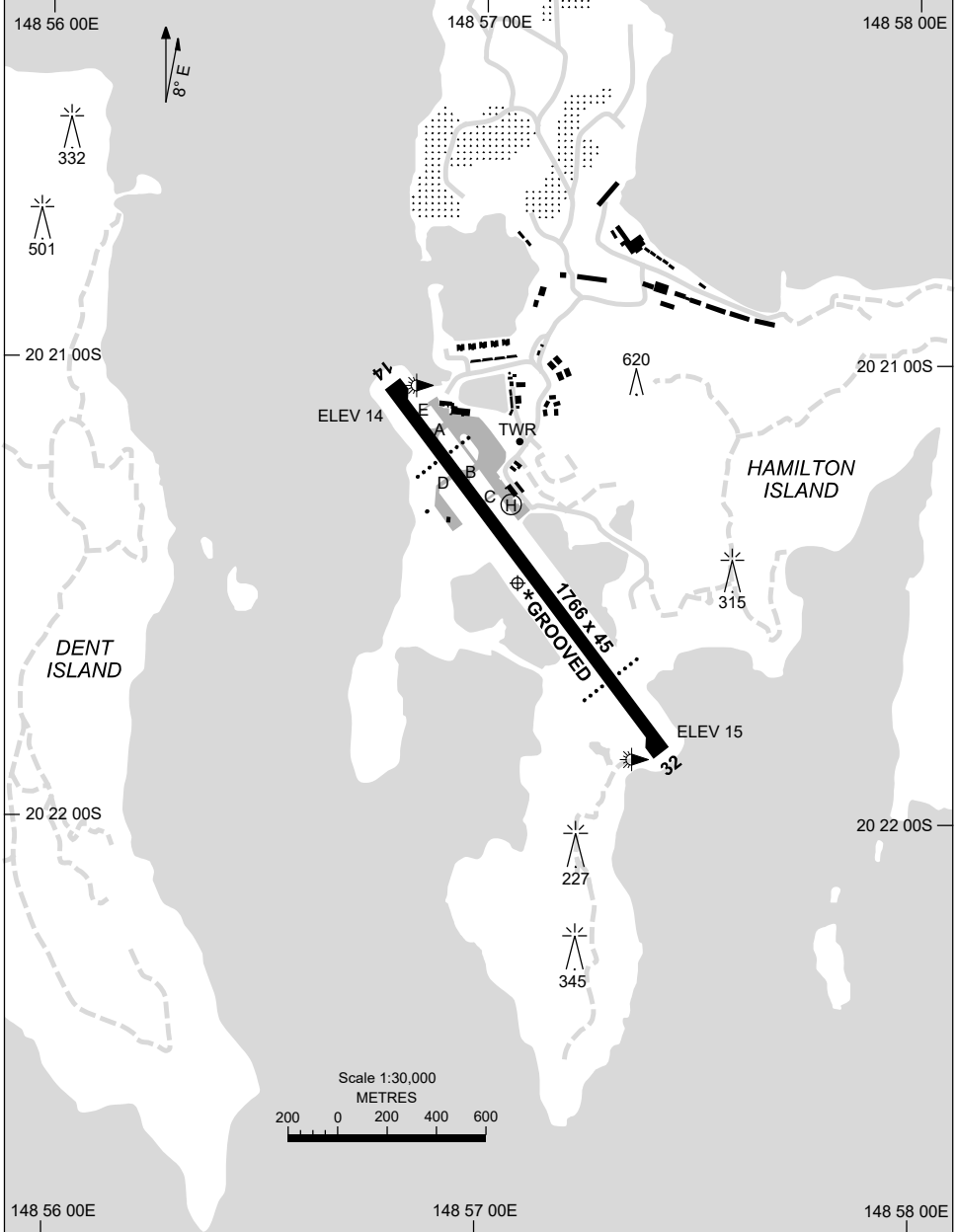


AD ELEV 15
20 21 29S 148 57 06E

AERODROME CHART - Page 1
HAMILTON ISLAND, QLD (YBHM)

1 DEC 2022

AWIS 124.75	ATIS 128.35	TWR 118.7	CTAF+AFRU (AH) 127.85	FIA (AH) BN CEN 135.5	Bearings are Magnetic Elevations in FEET AMSL
----------------	----------------	--------------	--------------------------	--------------------------	--



Changes: THR 14 ELEV.

BHMAD01-173

30 NOV 2023

AD ELEV 15
20 21 29S 148 57 06E

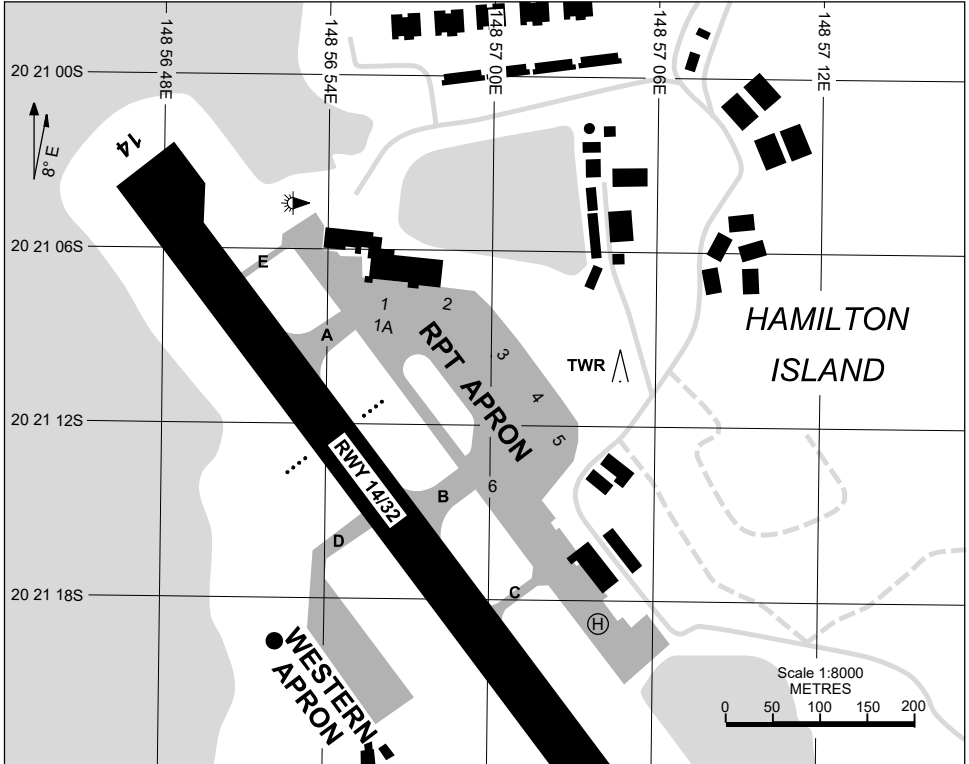
AERODROME CHART - Page 2
HAMILTON ISLAND, QLD (YBHM)

AWIS 124.75	ATIS 128.35	TWR 118.7	CTAF+AFRU (AH) 127.85	FIA (AH) BN CEN 135.5	Bearings are Magnetic Elevations in FEET AMSL
RWY	AERODROME LIGHTING				
	TAXIWAY : BLUE EDGE TWY A, B ONLY RL : MAN (PN)** , SDBY (60 SEC) , : PTBL FIXED WING ACFT ONLY (EMERG ONLY, 60 MIN PN, CTC ARO: 0414 594 592)				
14 ¹³⁵ ₃₁₅ 32	PAPI BOTH SIDES 3.0° 47FT MIRL (PN)** PAPI BOTH SIDES 3.0° 48FT MIRL (PN)**				
<p>NOTES</p> <ul style="list-style-type: none"> * 1. RWY GROOVED FULL WIDTH. ** 2. MAN SWITCH BY AD OPR. 3. FIA FREQ 135.5 AVBL CIRCUIT AREA. 4. AWIS REQUIRES 2 SEC TRANSMIT PULSES TO ACTIVATE. 					

Changes: PTBL LIGHTING, NOTE 1 REMOVED, Editorial.

BHMAD02-177

13 JUN 2024



PARKING POSITION INFORMATION

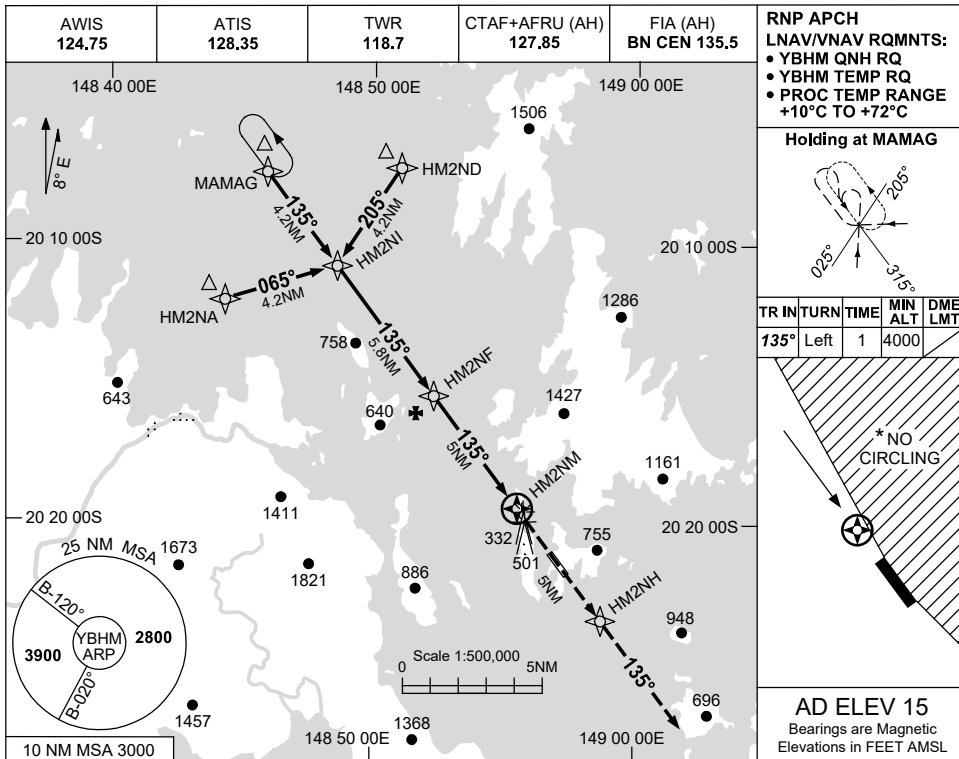
STAND	CO-ORDINATES	ELEV (ft)	CAPACITY	HYDRANT FUEL	DOCKING SYSTEM
1	20 21 07.91S 148 56 56.11E	15	A20N/B38M	NIL	MARSHALLER
1A	20 21 08.58S 148 56 56.07E	15	A20N/B38M	NIL	MARSHALLER
2	20 21 07.93S 148 56 58.41E	15	A20N/B38M	NIL	MARSHALLER
3	20 21 09.55S 148 57 00.45E	15	A20N/B38M	NIL	MARSHALLER
4	20 21 11.10S 148 57 01.69E	15	A20N/B38M	NIL	MARSHALLER
5	20 21 12.53S 148 57 02.43E	15	A20N/B38M	NIL	MARSHALLER
6	20 21 14.04S 148 57 00.13E	15	GLF5	NIL	MARSHALLER

USE QNH

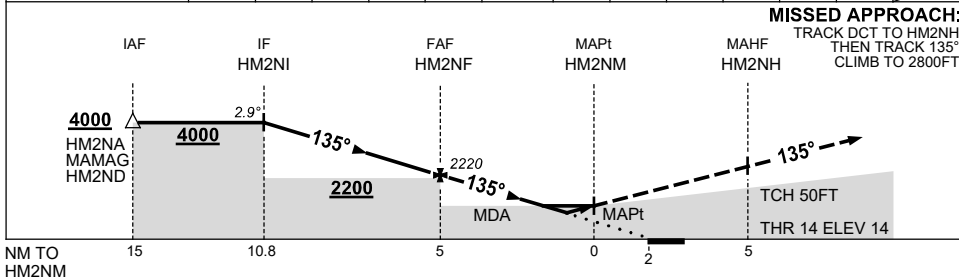
RNP Z RWY 14

15 JUN 2023

HAMILTON ISLAND, QLD (YBHM)



NM TO NEXT WPT	HM2NI	4	3	2	1	HM2NF	4	3	2	1	0.5	0.2	HM2NM
ALT (2.9° APCH PATH)	4000	3450	3140	2830	2530	2220	1910	1600	1300	990	830	740	



NOTES

CATEGORY	A	B	C	D
LNAV/VNAV	740 (726-4.3)			
LNAV	830 (815-4.8)			
CIRCLING *	1040 (1025-2.4)	1140 (1125-4.0)	1490 (1475-5.0)	
ALTERNATE	(1525-4.4)		(1625-6.0) (1975-7.0)	

1. MAX IAS:
INITIAL : 210KT.
- * 2. NO CIRCLING EAST OF RWY 14/32.

Changes: FROM SUP H05/23.

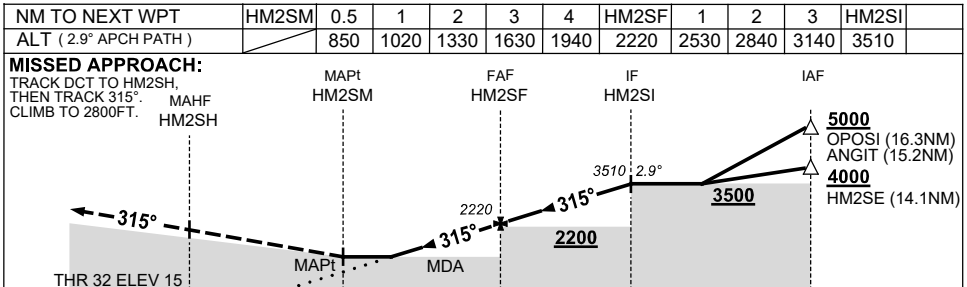
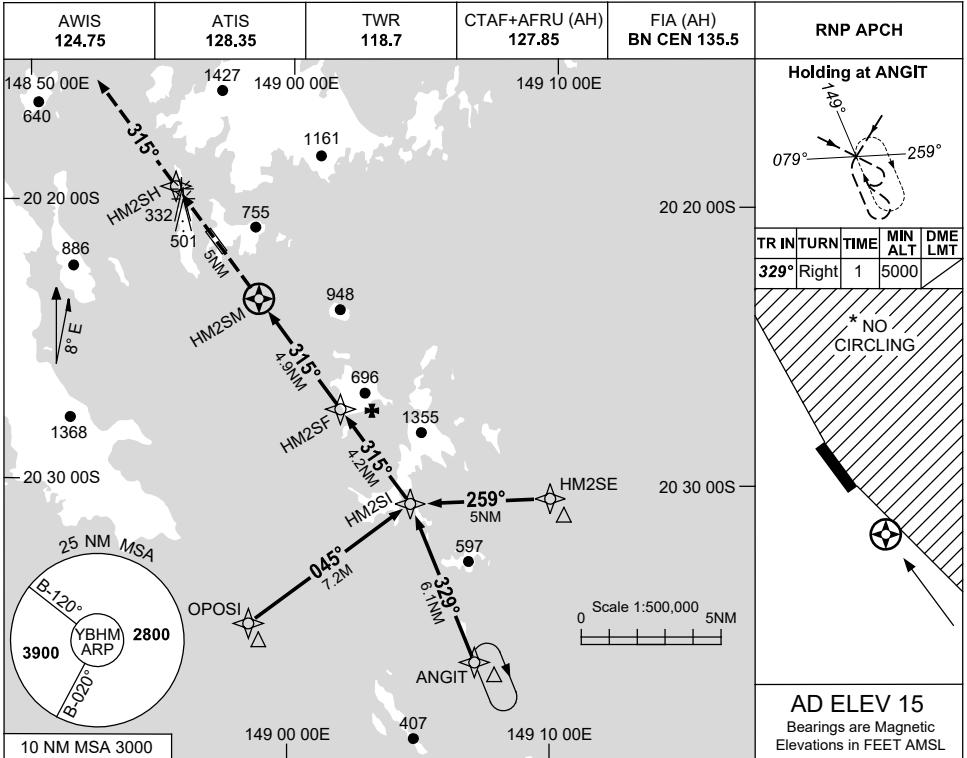
BHMGNO1-175

USE QNH

RNP Z RWY 32

15 JUN 2023

HAMILTON ISLAND, QLD (YBHM)



NOTES

1. MAX IAS: INITIAL : 210KT.
- * 2. NO CIRCLING EAST OF RWY 14/32.

CATEGORY	A	B	C	D
LNAV	850 (835-4.9)			
CIRCLING*	1040 (1025-2.4)		1140 (1125-4.0) 1490 (1475-5.0)	
ALTERNATE	(1525-4.4)		(1625-6.0) (1975-7.0)	

Changes: FROM SUP H05/23.

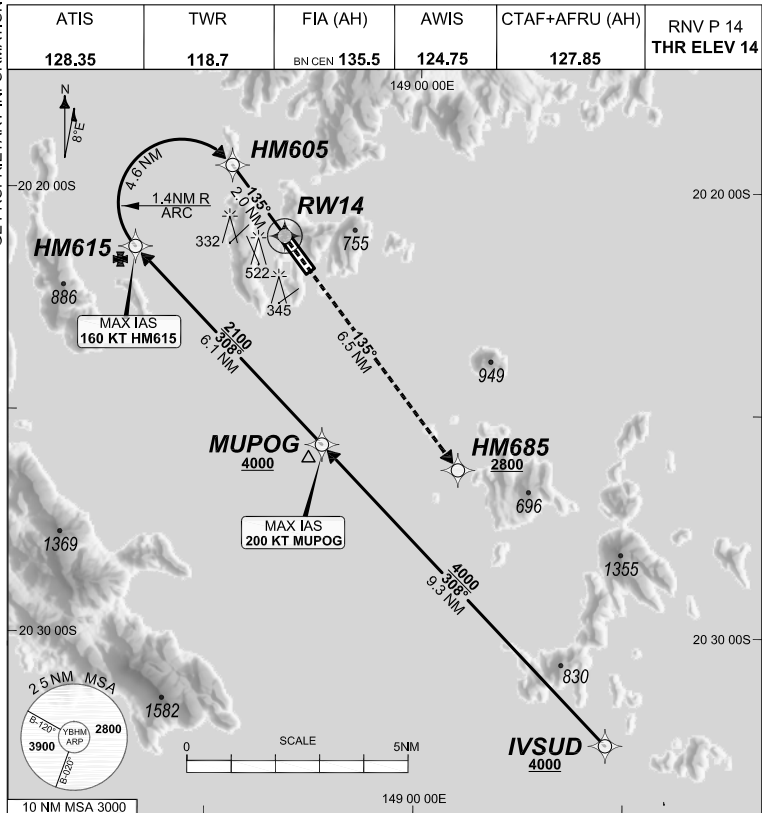
BHMGNO2-175

FOR CASA APPROVED
OPERATORS ONLY

24 MAR 2022

USE QNH HAMILTON ISLAND, QLD (YBHM)

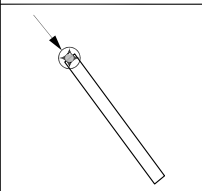
GE PROPRIETARY INFORMATION



ATIS	TWR	FIA (AH)	AWIS	CTAF+AFRU (AH)	RNP P 14 THR ELEV 14	RNP AR APCH - RF RQ - YBHM ACT QNH RQ - YBHM ACT TEMP RQ - PROC TEMP RANGE +14°C TO +36°C
128.35	118.7	BN CEN 135.5	124.75	127.85		

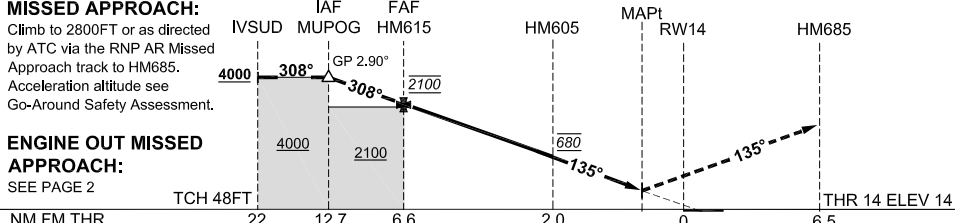
Holding as directed
by ATC

TR	INTURN TIME	MIN ALT	DME LMT
/	/	/	/



AD ELEV 15
Bearings are Magnetic
Elevations in FEET AMSL

			MUPOG 4000	HM615 2100	HM605 680	RW14 62		
--	--	--	---------------	---------------	--------------	------------	--	--



ENGINE OUT MISSED APPROACH:
SEE PAGE 2

CATEGORY	A	B	C	D
RNP (0.30)	NOT APPLICABLE		DA(H) 669' (655')-3.7	
RNP ()	NOT APPLICABLE		DA(H) () - .	
RNP ()	NOT APPLICABLE		DA(H) () - .	
RNP ()	NOT APPLICABLE		DA(H) () - .	
CIRCLING			NOT AUTHORISED	

- NOTES**
- PROC AVBL up to MLW.
 - Lateral transition to MAP must not be initiated prior to DA/H PSN.
 - APCH Path does not coincide with PAPI glide path 3°.
 - Transient yacht masts may infringe RWY 14 visual approach slope clearance.
 - See Engineering Report for Minimum MAP gradient (AE) to 2800 FT.

202109301559 COPYRIGHT 2021 NAVERUS, INC. USA

DO NOT USE FOR NAVIGATION

Prepared by GE Aviation



FOR CASA APPROVED OPERATORS ONLY

24 MAR 2022

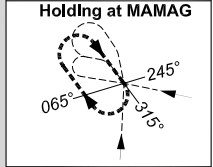
USE QNH

HAMILTON ISLAND, QLD (YBHM)

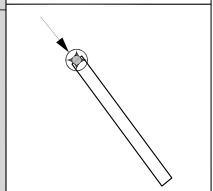
GE PROPRIETARY INFORMATION

ATIS 128.35	TWR 118.7	FIA (AH) BN CEN 135.5	AWIS 124.75	CTAF+AFRU (AH) 127.85	RNP P 14 THR ELEV 14
-----------------------	---------------------	---------------------------------	-----------------------	---------------------------------	-------------------------

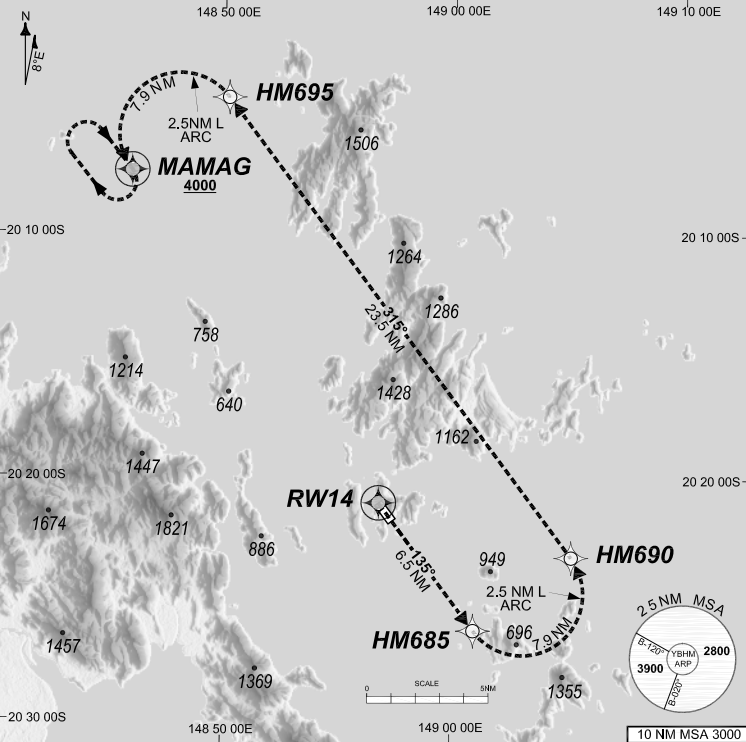
RNP AR APCH
 - RF RQ
 - YBHM ACT QNH RQ
 - YBHM ACT TEMP RQ
 - PROC TEMP RANGE
 +14°C TO +36°C



TR	INTURN	TIME	MIN ALT	DME LMT
135°	Right	1'	4000	



AD ELEV 15
 Bearings are Magnetic Elevations in FEET AMSL



ENGINE OUT MISSED APPROACH:

Track via the RNP AR Engine Out Missed Approach track to MAMAG and hold as published.

Acceleration altitude see Go-Around Safety Assessment.
 Continue to climb in hold as necessary to 4000FT, or as directed by ATC. EO hold only, not contained in CTA. Maximum holding speed **230 KIAS**.

20210929/1239 COPYRIGHT 2021 NAVERUS, INC. USA

Revision: From SUP H97/21, chart title

BHMG04-170

DO NOT USE FOR NAVIGATION

Prepared by GE Aviation

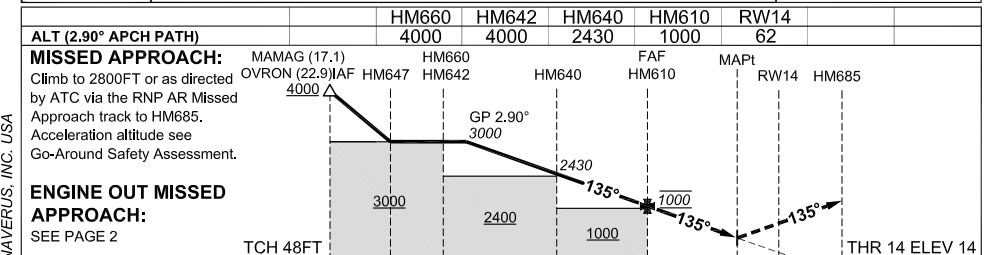
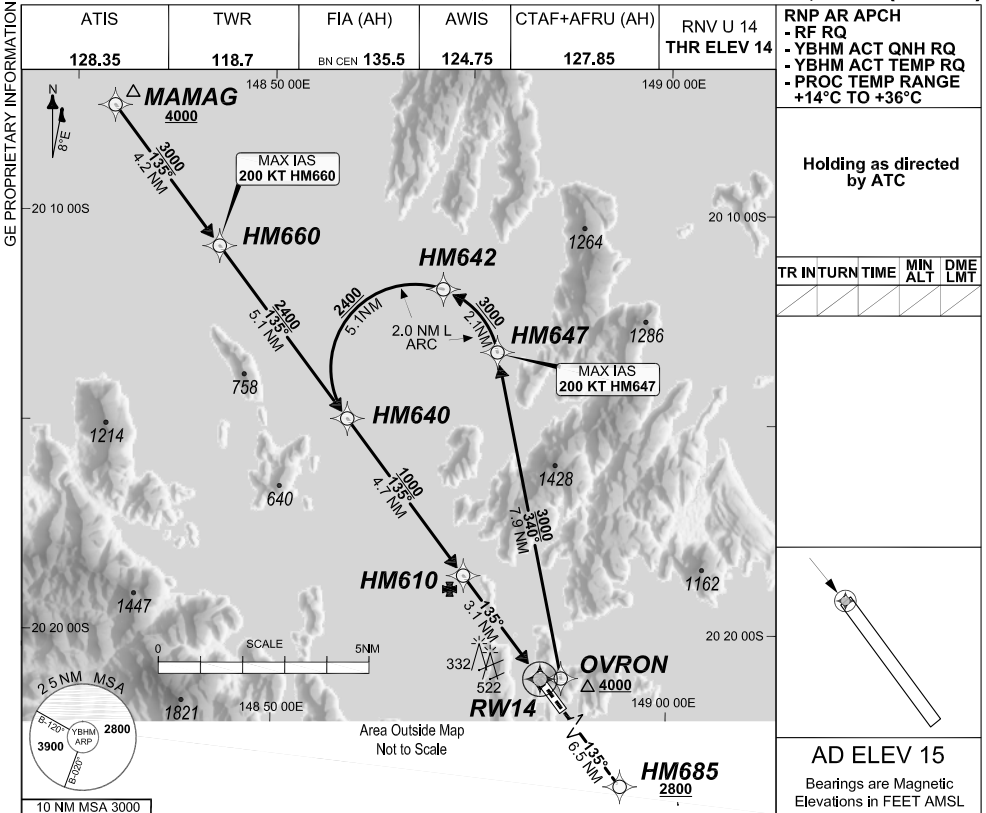


FOR CASA APPROVED OPERATORS ONLY

24 MAR 2022

USE QNH

HAMILTON ISLAND, QLD (YBHM)



CATEGORY	A	B	C	D
RNP (0.30)	NOT APPLICABLE		DA(H) 653' (639')-3.6	
RNP ()	NOT APPLICABLE		DA(H) () - .	
RNP ()	NOT APPLICABLE		DA(H) () - .	
RNP ()	NOT APPLICABLE		DA(H) () - .	
CIRCLING			NOT AUTHORISED	

NOTES

- PROC AVBL up to MLW.
- Lateral transition to MAP must not be initiated prior to DA/H PSN.
- APCH Path does not coincide with PAPI glide path 3°.
- Transient yacht masts may infringe RWY 14 visual approach slope clearance.
- See Engineering Report for Minimum MAP gradient (AE) to 2800 FT.

Revision: From SUP H97/21, chart title

BHMGN05-170

DO NOT USE FOR NAVIGATION

Prepared by GE Aviation



**FOR CASA APPROVED
OPERATORS ONLY**

24 MAR 2022

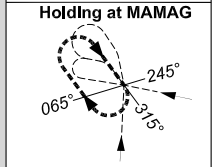
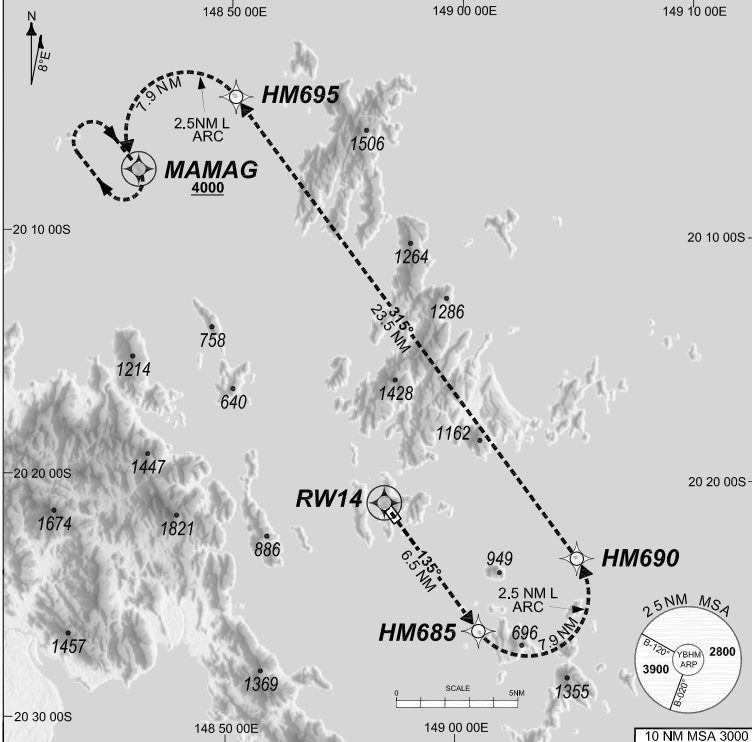
USE QNH

HAMILTON ISLAND, QLD (YBHM)

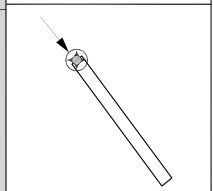
GE PROPRIETARY INFORMATION

ATIS 128.35	TWR 118.7	FIA (AH) BN CEN 135.5	AWIS 124.75	CTAF+AFRU (AH) 127.85	RNV U 14 THR ELEV 14
-----------------------	---------------------	---------------------------------	-----------------------	---------------------------------	-------------------------

RNP AR APCH
 - RF RQ
 - YBHM ACT QNH RQ
 - YBHM ACT TEMP RQ
 - PROC TEMP RANGE
 +14°C TO +36°C



TR IN	TURN	TIME	MIN ALT	DME LMT
135°	Right	1'	4000	



AD ELEV 15
 Bearings are Magnetic
 Elevations in FEET AMSL

ENGINE OUT MISSED APPROACH:

Track via the RNP AR Engine Out Missed Approach track to MAMAG and hold as published.

Acceleration altitude see Go-Around Safety Assessment.
 Continue to climb in hold as necessary to 4000FT, or as directed by ATC. EO hold only, not contained in CTA. Maximum holding speed **230 KIAS**.

2021/09/29/1240 COPYRIGHT © 2021 NAVERUS, INC. USA

Revision: From SUP H97/21, chart title

BHMG06-170

DO NOT USE FOR NAVIGATION

Prepared by GE Aviation

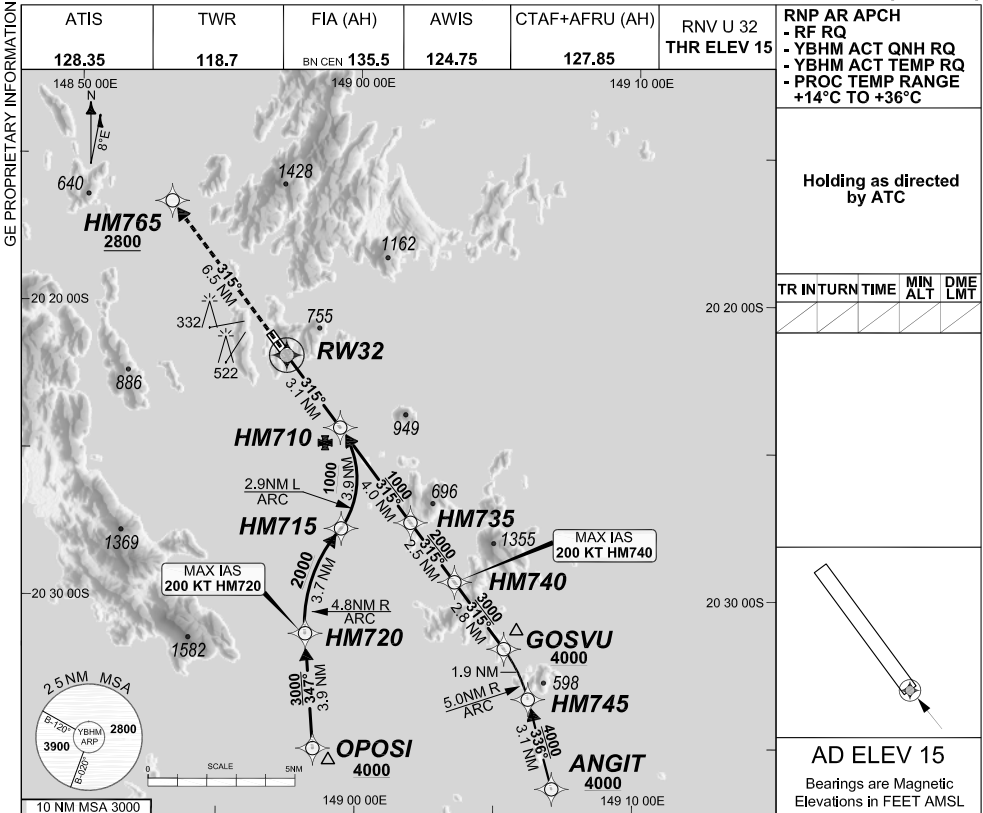


FOR CASA APPROVED OPERATORS ONLY

24 MAR 2022

USE QNH

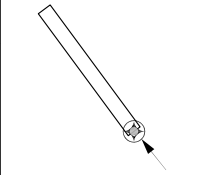
HAMILTON ISLAND, QLD (YBHM)



RNP AR APCH
 - RF RQ
 - YBHM ACT QNH RQ
 - YBHM ACT TEMP RQ
 - PROC TEMP RANGE +14°C TO +36°C

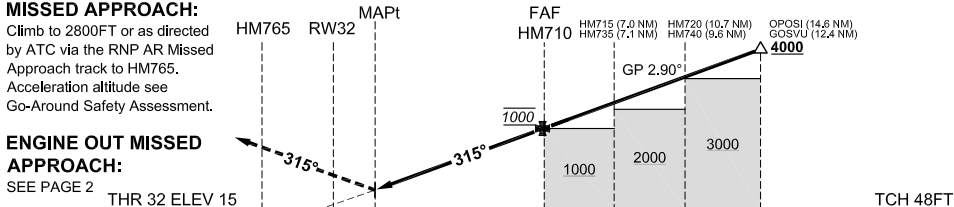
Holding as directed by ATC

TR	INTURN	TIME	MIN ALT	DME LMT



AD ELEV 15
 Bearings are Magnetic Elevations in FEET AMSL

ALT (2.90° APCH PATH)	RW32	HM710	HM715	HM735	HM740	HM720
	63	1000	2180	2230	3000	3300



ENGINE OUT MISSED APPROACH:
 SEE PAGE 2
 THR 32 ELEV 15

CATEGORY	A	B	C	D
RNP (0.30)	NOT APPLICABLE		DA(H) 628' (613')-3.4	
RNP ()	NOT APPLICABLE		DA(H) () - .	
RNP ()	NOT APPLICABLE		DA(H) () - .	
RNP ()	NOT APPLICABLE		DA(H) () - .	
CIRCLING			NOT AUTHORISED	

- NOTES**
- PROC AVBL up to MLW.
 - Lateral transition to MAP must not be initiated prior to DA/H PSN.
 - APCH Path does not coincide with PAPI glide path 3°.
 - Transient yacht masts may infringe RWY 32 visual approach slope clearance.
 - See Engineering Report for Minimum MAP gradient (AE) to 2800 FT.

202109301941 COPYRIGHT 2021 NAVERUS, INC. USA

Revision: From SUP H97/21, chart title

BHMG07-170

DO NOT USE FOR NAVIGATION

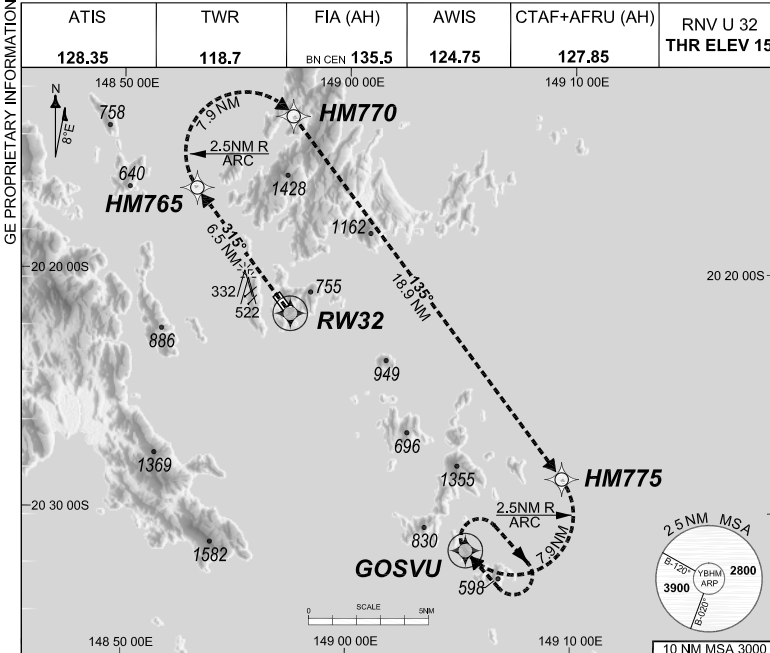
Prepared by GE Aviation



24 MAR 2022

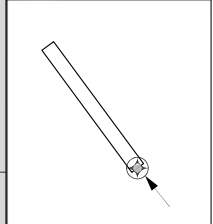
USE QNH

HAMILTON ISLAND, QLD (YBHM)



RNP AR APCH - RF RQ - YBHM ACT QNH RQ - YBHM ACT TEMP RQ - PROC TEMP RANGE +14°C TO +36°C Holding at GOSVU		

TR IN	TURN TIME	MIN ALT	DME LMT
315°	Right	1'	4000



AD ELEV 15
Bearings are Magnetic
Elevations in FEET AMSL

ENGINE OUT MISSED APPROACH:

Track via the RNP AR Engine Out Missed Approach track to GOSVU and hold as published.

Acceleration altitude see Go-Around Safety Assessment.
Continue to climb in hold as necessary to 4000FT, or as directed by ATC. EO hold only, not contained in CTA. Maximum holding speed **230 KIAS**.

202109231255 COPYRIGHT 2021 NAVERUS, INC. USA

Revision: From SUP H97/21, chart title

BHMG08-170

DO NOT USE FOR NAVIGATION

Prepared by GE Aviation



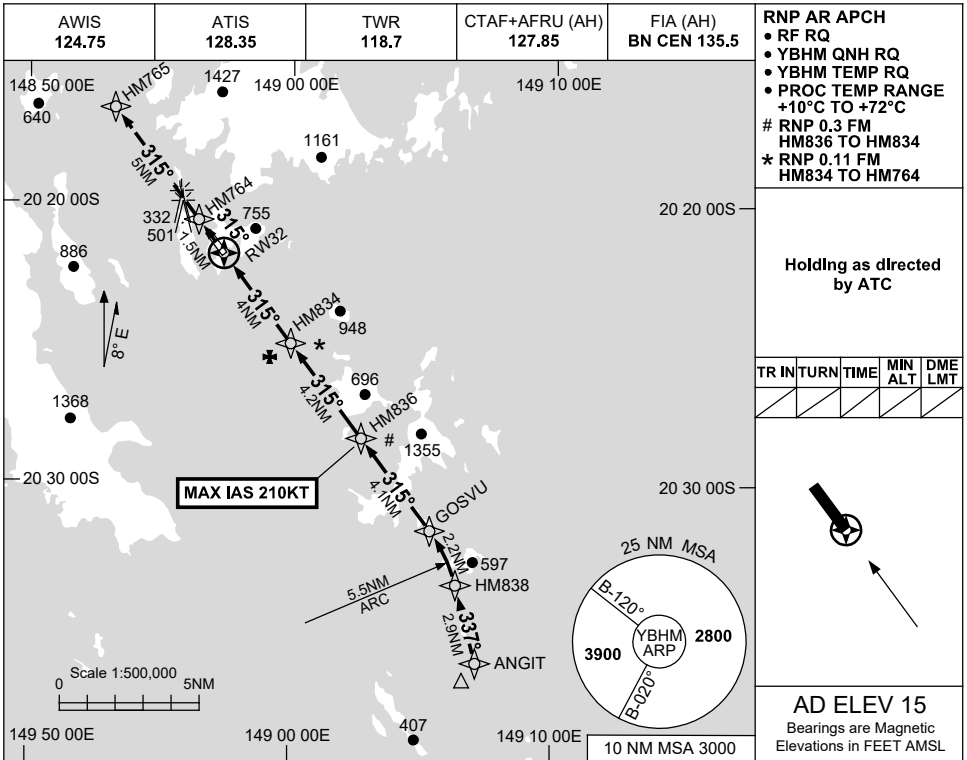
FOR CASA APPROVED OPERATORS ONLY

USE QNH

RNP W RWY 32 (AR)

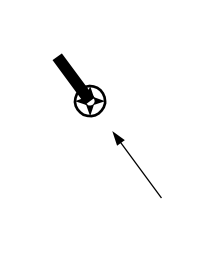
HAMILTON ISLAND, QLD (YBHM)

15 JUN 2023



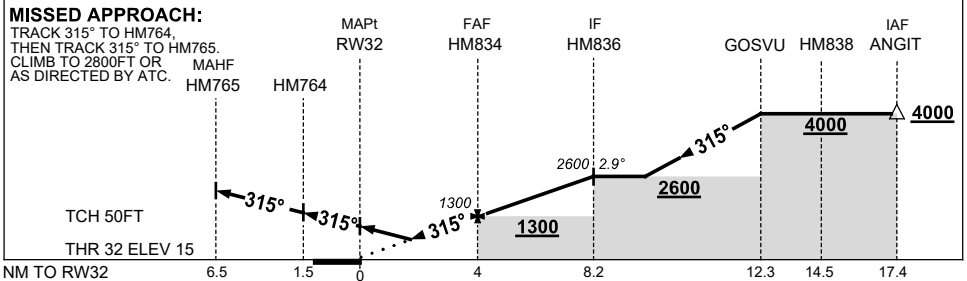
Holding as directed by ATC

TR	IN	TURN	TIME	MIN ALT	DME LMT



AD ELEV 15
 Bearings are Magnetic
 Elevations in FEET AMSL

NM TO NEXT WPT	RW32	2.2	3	HM834	1	2	3	4	HM836		
ALT (2.9° APCH PATH)	730	990	1300	1610	1920	2220	2530	2600			



NOTES

CATEGORY	A	B	C	D
RNP (0.11)	460 (445-2.6)			
CIRCLING	NOT AUTHORISED			
ALTERNATE	(1425-4.4)	(1525-6.0)	(1875-7.0)	

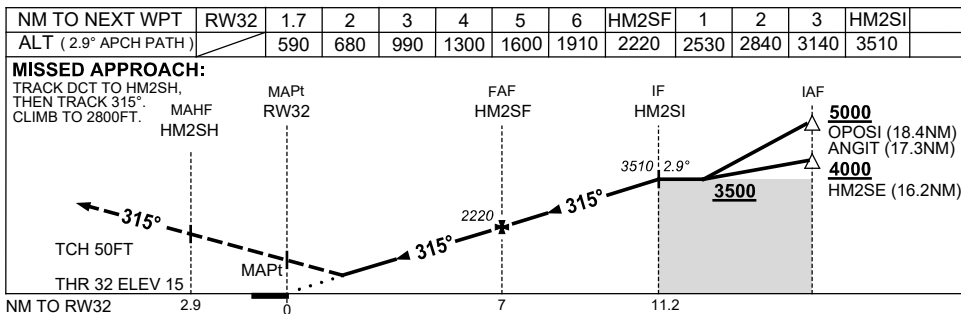
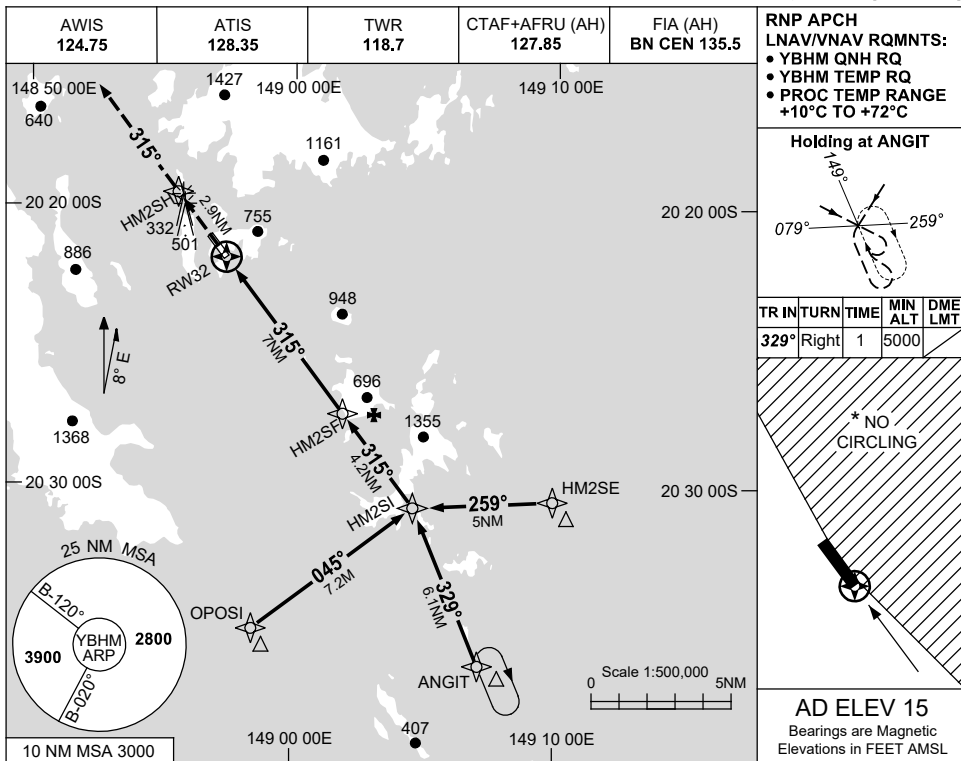
1. MAX IAS:
 HM836 : 210KT.

Changes: FROM SUP H05/23.

BHMGNO9-175

**USE QNH RNP Y RWY 32 (LNAV/VNAV ONLY)
HAMILTON ISLAND, QLD (YBHM)**

15 JUN 2023



NOTES

1. MAX IAS: INITIAL : 210KT.
- * 2. NO CIRCLING EAST OF RWY 14/32.

CATEGORY	A	B	C	D
LNAV/VNAV(4.1% MAP)	590 (575-3.4)			
LNAV/VNAV(2.5% MAP)	670 (655-3.8)			
CIRCLING *	1040 (1025-2.4)		1140 (1125-4.0)	
ALTERNATE	(1525-4.4)		(1975-7.0)	

Changes: FROM SUP H05/23.

BHMG10-175

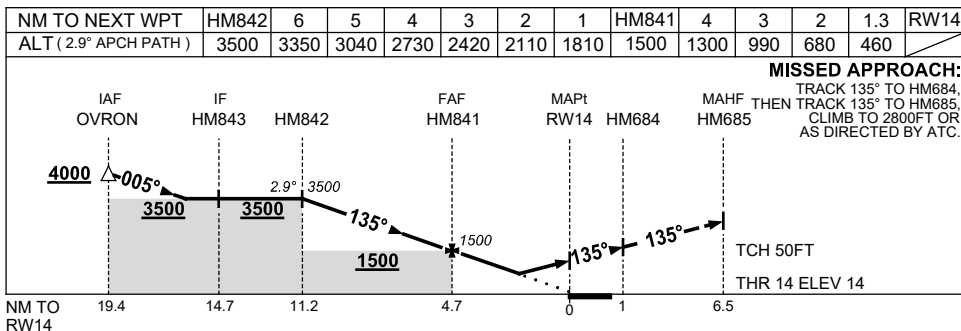
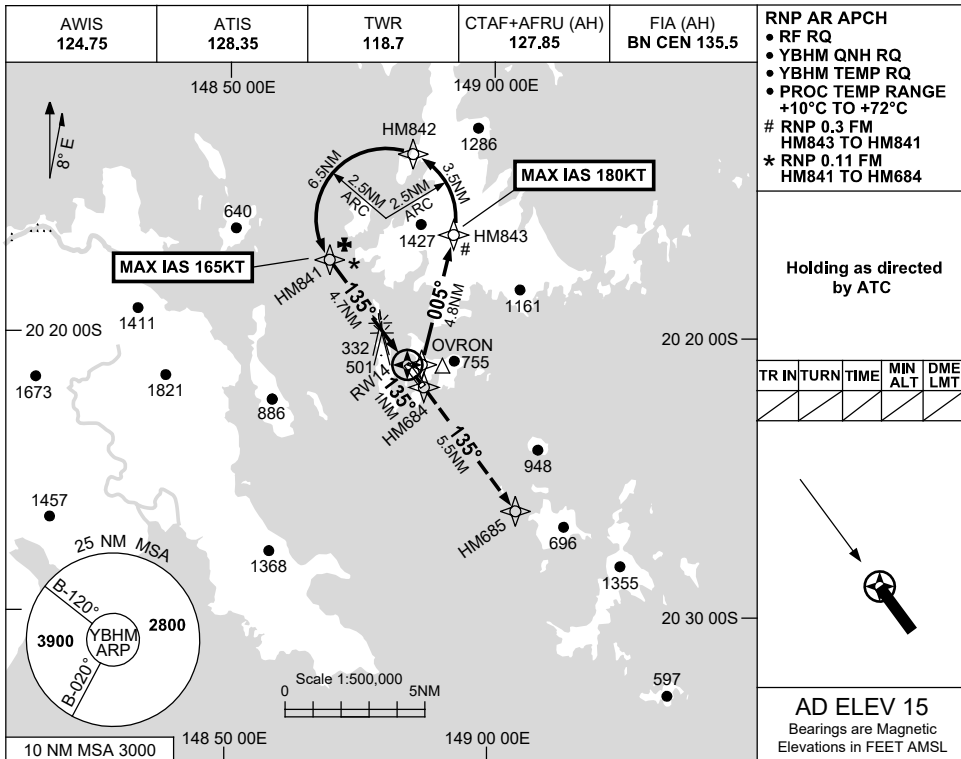
FOR CASA APPROVED OPERATORS ONLY

USE QNH

RNP W RWY 14 (AR)

15 JUN 2023

HAMILTON ISLAND, QLD (YBHM)



NOTES

- MAX IAS:
 HM843 : 180KT.
 HM841 : 165KT.

CATEGORY	A	B	C	D
RNP (0.11)	460 (446-2.6)			
CIRCLING	NOT AUTHORISED			
ALTERNATE	(1425-4.4)	(1525-6.0)	(1875-7.0)	

Changes: FROM SUP H05/23.

BHMG11-175

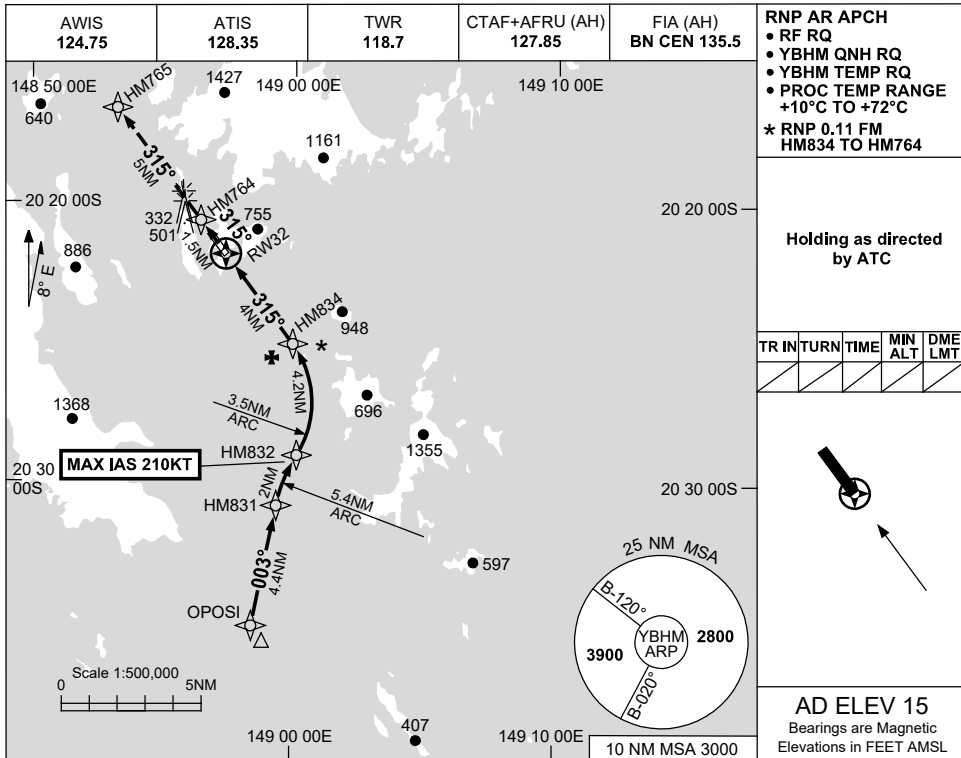
FOR CASA APPROVED OPERATORS ONLY

USE QNH

RNP X RWY 32 (AR)

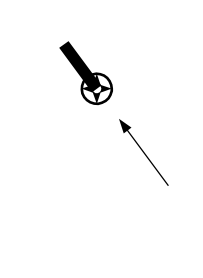
15 JUN 2023

HAMILTON ISLAND, QLD (YBHM)



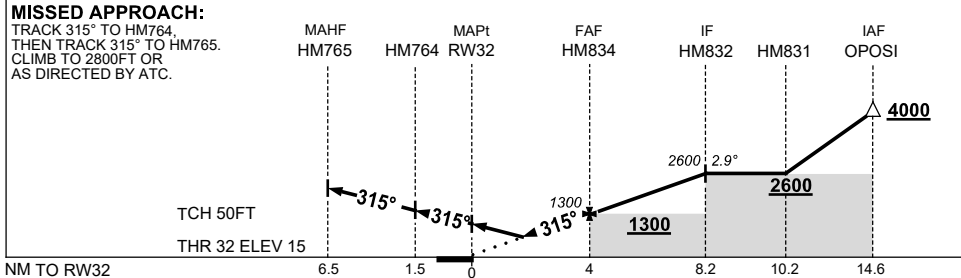
Holding as directed by ATC

TR	IN	TURN	TIME	MIN ALT	DME LMT



AD ELEV 15
Bearings are Magnetic
Elevations in FEET AMSL

NM TO NEXT WPT	RW32	1.3	2	3	HM834	1	2	3	4	HM832		
ALT (2.9° APCH PATH)		460	680	990	1300	1610	1920	2220	2530	2600		



NOTES

CATEGORY	A	B	C	D
RNP (0.11)	460 (445-2.6)			
CIRCLING	NOT AUTHORISED			
ALTERNATE	(1425-4.4)	(1525-6.0)	(1875-7.0)	

1. MAX IAS:
HM832 : 210KT.

Changes: FROM SUP H05/23.

BHMG12-175

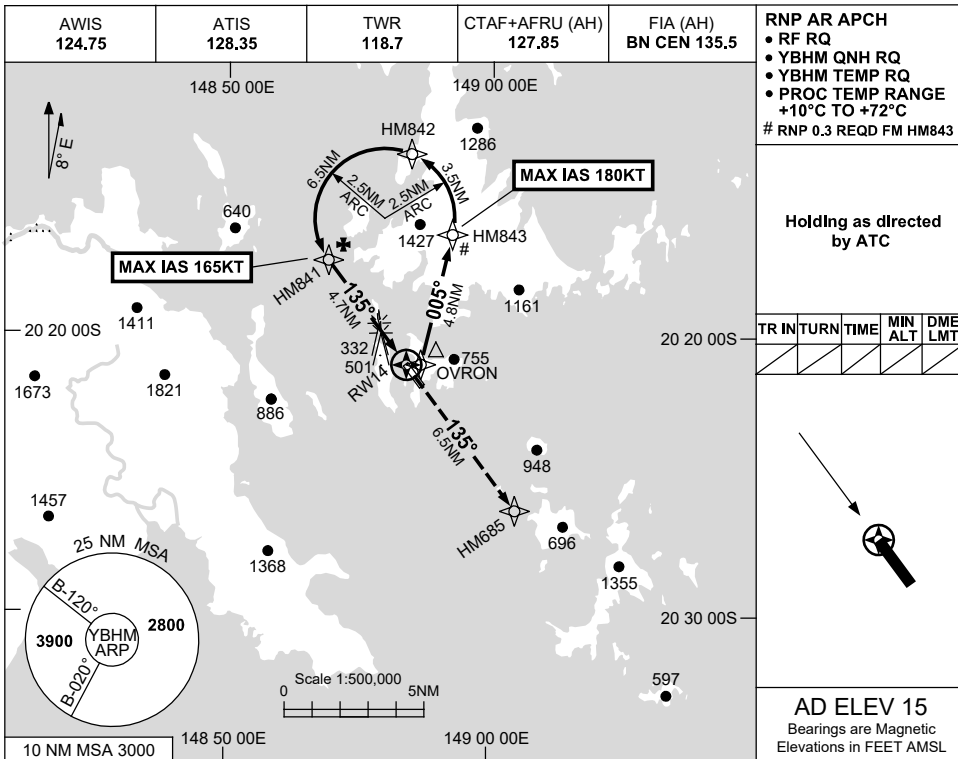
FOR CASA APPROVED OPERATORS ONLY

USE QNH

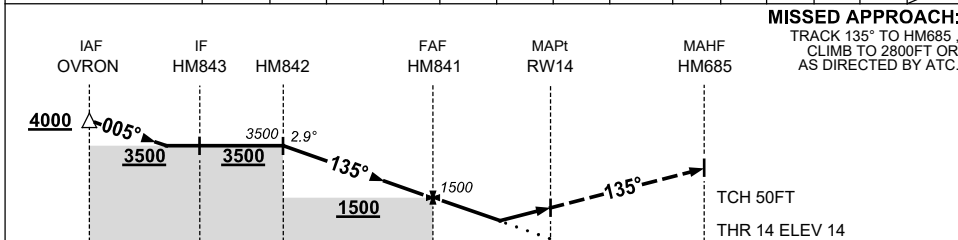
RNP Y RWY 14 (AR)

HAMILTON ISLAND, QLD (YBHM)

1 DEC 2022



NM TO NEXT WPT	HM842	6	5	4	3	2	1	HM841	4	3	2.3	1.8	1.6	RW14
ALT (2.9° APCH PATH)	3500	3350	3040	2730	2420	2110	1810	1500	1300	990	760	610	550	



CATEGORY	A	B	C	D
RNP (0.3)		760 (746-4.4)		
RNP (0.11)(2.5% MAP)		610 (596-3.5)		
RNP (0.11)(4.5% MAP)		550 (536-3.1)		
CIRCLING	NOT AUTHORISED			
ALTERNATE	(1425-4.4)		(1525-6.0)	(1875-7.0)

NOTES
1. MAX IAS:
HM843 : 180KT.
HM841 : 165KT.

Changes: FROM SUP H81/22.

BHMG13-173