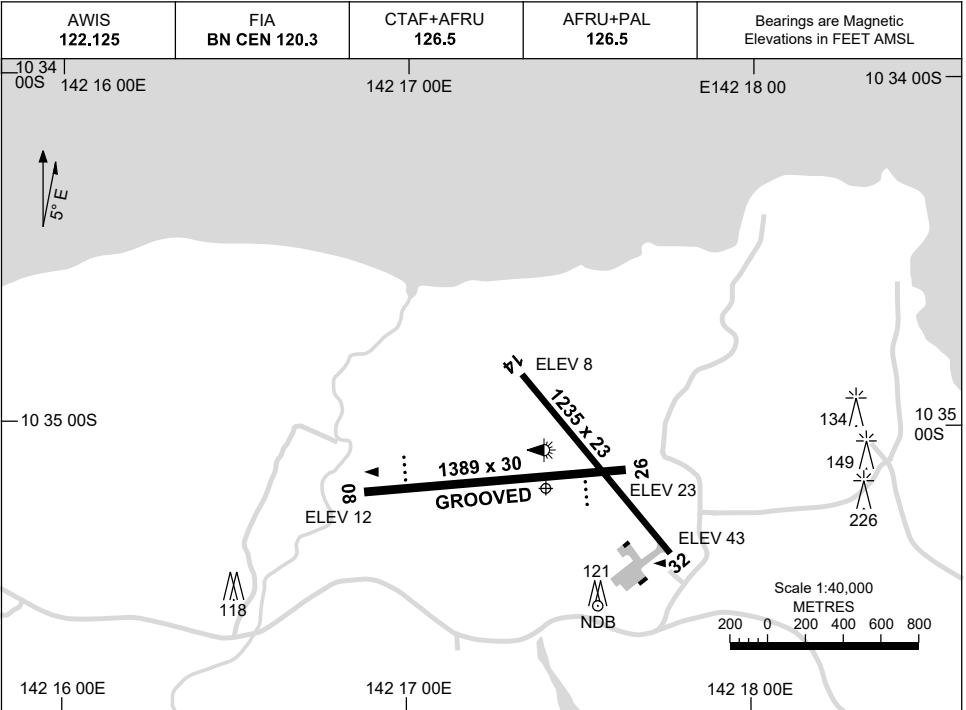


15 JUN 2023

AD ELEV 43  
10 35 11S 142 17 24E

**AERODROME CHART**  
**HORN ISLAND, QLD (YHID)**



	<b>AERODROME LIGHTING</b>	
<b>RWY</b>	TAXIWAY : BLUE EDGE RL : AFRU+PAL 126.5 , SDBY (15 SEC) FOR RWY 08/26 ONLY , PTBL PN.	
<b>08</b> <small>080</small>	PAPI 3.0° 44FT LIRL	
<small>260</small> <b>26</b>	PAPI 3.2° 50FT LIRL	
<b>14</b> <small>135</small>	NIL	
<small>375</small> <b>32</b>	NIL	

**NOTES**

Changes: NOTE.

HIDAD01-175

# GNSS ARRIVAL PROCEDURES HORN ISLAND, QLD (YHID) Page 1

27 FEB 2020

AWIS 122.125	FIA BN CEN 120.3	CTAF+AFRU 126.5	AFRU+PAL 126.5		Bearings are Magnetic Elevations in FEET AMSL
-----------------	---------------------	--------------------	-------------------	--	--

25 NM MSA  
B-165°  
2400  
HD NDB  
B-216°  
2000

**REFERENCE WAYPOINT HID NDB**

HID NDB 356

\* NO CIRCLING IN SECTOR SOUTH OF RWY 26 AND EAST OF RWY 32. LANDING NOT PERMITTED RWY 32.

10 NM MSA 2000

AD ELEV 43

**SECTOR A**

NDB  
2400  
1500  
1650  
1970  
MDA  
MApt

**MISSED APPROACH:**  
CLIMB ON TRACK TO 2400FT.

NM TO NDB	25	16	7	5	4	0													
<b>CIRCLING MINIMA</b>	A,B: 970-2.4		C: 1030-4.0		D: N/A														
NM TO NDB	5.1	5	4	3	2.1	2	1.8												
ALT (3° APCH PATH)	2000	1970	1650	1330	1030	1010	970												

**SECTOR B**

NDB  
2400  
1600  
1000  
1700  
MDA  
MApt

**MISSED APPROACH:**  
CLIMB ON TRACK TO 2000FT.

NM TO NDB	25	15	9	5	0														
<b>CIRCLING MINIMA</b>	A,B: 970-2.4		C: 1030-4.0		D: N/A														
NM TO NDB	7.2	7	6	5	4	3	2.9	2.7											
ALT (3° APCH PATH)	2400	2340	2020	1700	1380	1060	1030	970											

**SECTOR C**

NDB  
2000  
1750  
MDA  
MApt

**MISSED APPROACH:**  
CLIMB ON TRACK TO 2000FT.

NM TO NDB	25	15	6	5	0														
<b>CIRCLING MINIMA</b>	A,B: 1000-2.4		C: 1030-4.0		D: N/A														
NM TO NDB	5.8	5	4	3	2.8	2.7													
ALT (3° APCH PATH)	2000	1750	1430	1110	1030	1000													

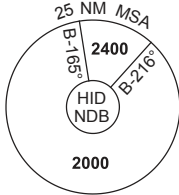
Changes: CAT C MINIMA, SECTOR B MIN ALT, DIST/ALT.

HIDDG01-162

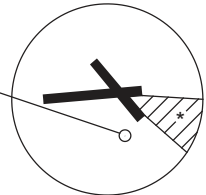
# GNSS ARRIVAL PROCEDURES HORN ISLAND, QLD (YHID) Page 2

27 FEB 2020

AWIS 122.125	FIA BN CEN 120.3	CTAF+AFRU 126.5	AFRU+PAL 126.5		Bearings are Magnetic Elevations in FEET AMSL
-----------------	---------------------	--------------------	-------------------	--	--



**REFERENCE WAYPOINT HID NDB**



\* NO CIRCLING IN SECTOR SOUTH OF RWY 26 AND EAST OF RWY 32. LANDING NOT PERMITTED RWY 32.

10 NM MSA 2000

AD ELEV 43

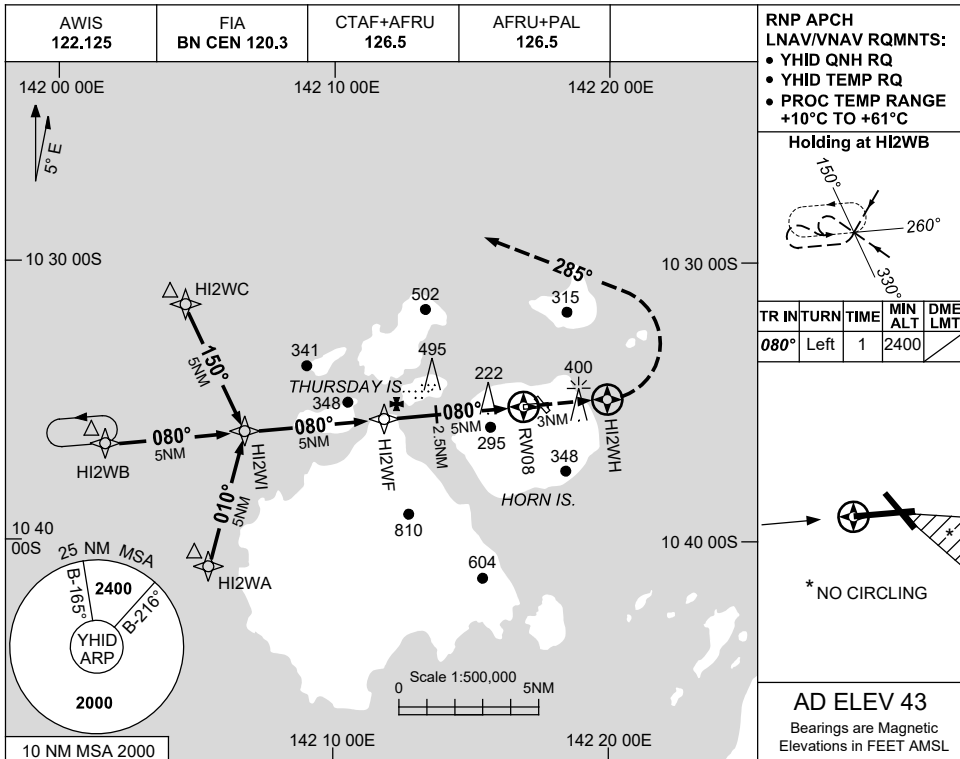
<b>SECTOR D</b>						<b>MISSED APPROACH:</b>
						CLIMB ON TRACK TO 2400FT.
NM TO NDB	35	25	16	7	6	
<b>CIRCLING MINIMA</b>	A,B: 970-2.4		C: 1030-4.0		D: N/A	
NM TO NDB	6	5	4	3	2.9	2.7
ALT (3° APCH PATH)	2000	1700	1380	1060	1030	970

USE QNH

RNP RWY 08

**HORN ISLAND, QLD (YHID)**

7 SEP 2023

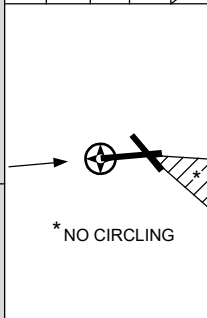


**RNP APCH  
LNAV/VNAV RQMNTS:**

- YHID QNH RQ
- YHID TEMP RQ
- PROC TEMP RANGE +10°C TO +61°C

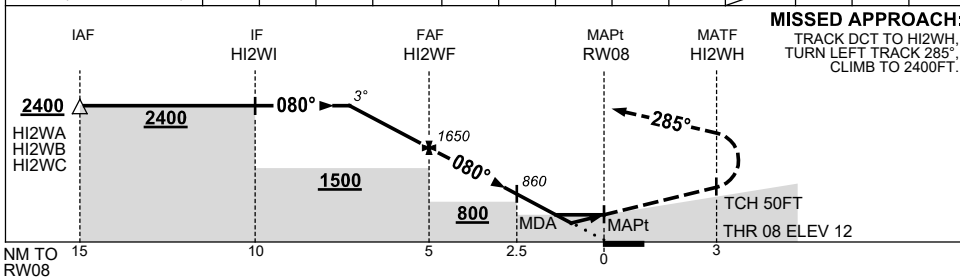
**Holding at HI2WB**

TR	IN	TURN	TIME	MIN ALT	DME LMT
080°	Left	1	2400		



**AD ELEV 43**  
Bearings are Magnetic  
Elevations in FEET AMSL

NM TO NEXT WPT	2.3	2	1	HI2WF	4	3	2.5	2	1.5	RW08
ALT (3° APCH PATH)	2400	2290	1970	1650	1340	1020	860	690	540	



**MISSED APPROACH:**  
TRACK DCT TO HI2WH,  
TURN LEFT TRACK 285°,  
CLIMB TO 2400FT.

**NOTES**

CATEGORY	A	B	C	D
LNAV/VNAV		540 (528-3.0)		NOT APPLICABLE
LNAV		690 (678-3.9)		
CIRCLING *	970 (927-2.4)		1030 (987-4.0)	
ALTERNATE	(1427-4.4)		(1487-6.0)	

1. MAX IAS:  
INITIAL : 210KT.
- \* 2. NO CIRCLING IN  
SECTOR SOUTH OF  
RWY 26 AND EAST  
OF RWY 32.
3. LANDING NOT  
PERMITTED RWY 32.

Changes: WPT NAMING CONVENTION, MIN ALT.

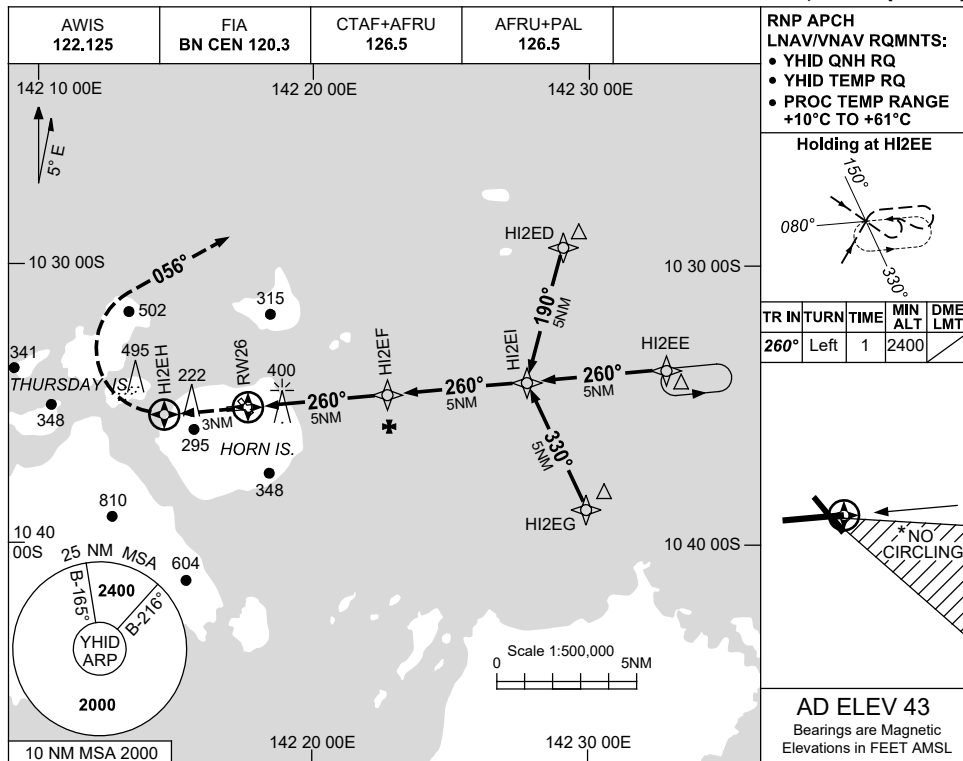
HIDGN01-176

USE QNH

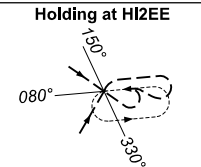
RNP RWY 26

**HORN ISLAND, QLD (YHID)**

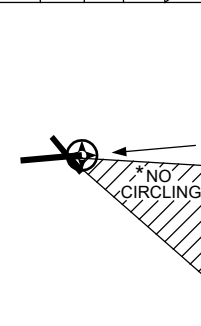
7 SEP 2023



**RNP APCH**  
**LNAV/VNAV RQMNTS:**  
 • YHID QNH RQ  
 • YHID TEMP RQ  
 • PROC TEMP RANGE  
 +10°C TO +61°C

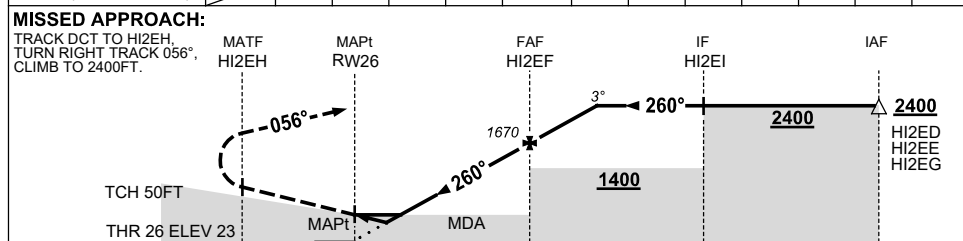


TR	IN	TURN	TIME	MIN ALT	DME LMT
260°	Left	1	2400		



**AD ELEV 43**  
 Bearings are Magnetic  
 Elevations in FEET AMSL

NM TO NEXT WPT	RW26	1.9	2.4	3	4	HI2EF	1	2.3				
ALT (3° APCH PATH)		670	830	1030	1350	1670	1980	2400				



- NOTES**
1. MAX IAS: INITIAL : 210KT.
  - \* 2. NO CIRCLING IN SECTOR SOUTH OF RWY 26 AND EAST OF RWY 32.
  3. LANDING NOT PERMITTED RWY 32.
  4. VERTICAL PATH NOT ALIGNED WITH PAPI RWY 26.

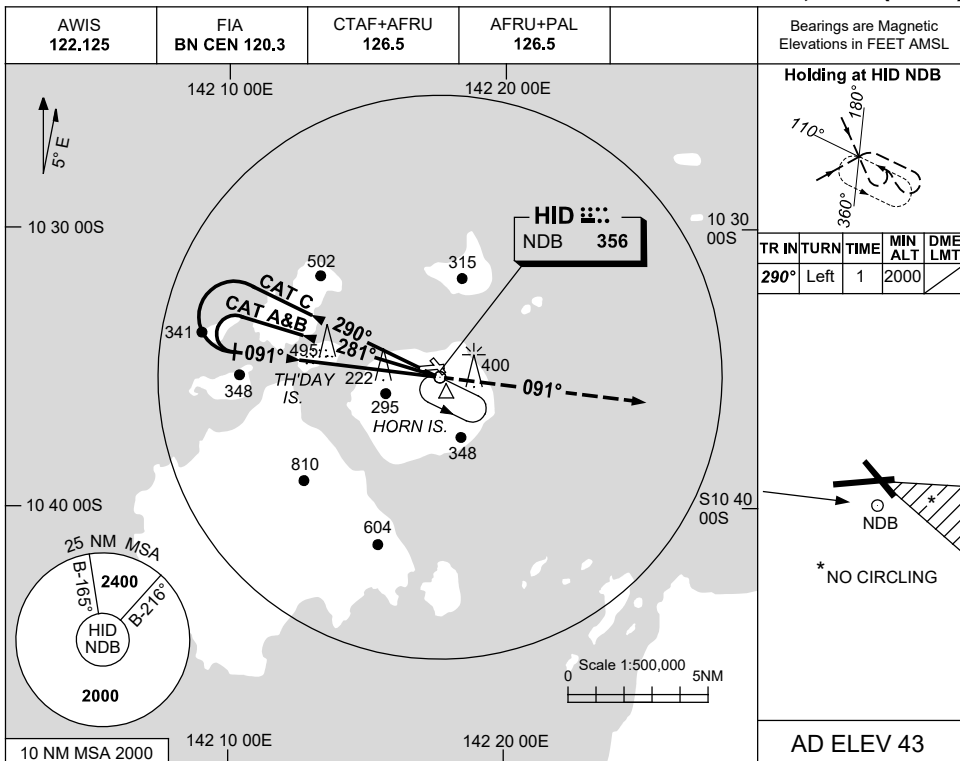
CATEGORY	A	B	C	D
LNAV/VNAV	670 (647-3.7)			NOT APPLICABLE
LNAV	830 (807-4.6)			
CIRCLING *	970 (927-2.4)		1030 (987-4.0)	
ALTERNATE	(1427-4.4)		(1487-6.0)	

Changes: WPT NAMING CONVENTION. HIDGN02-176

USE QNH

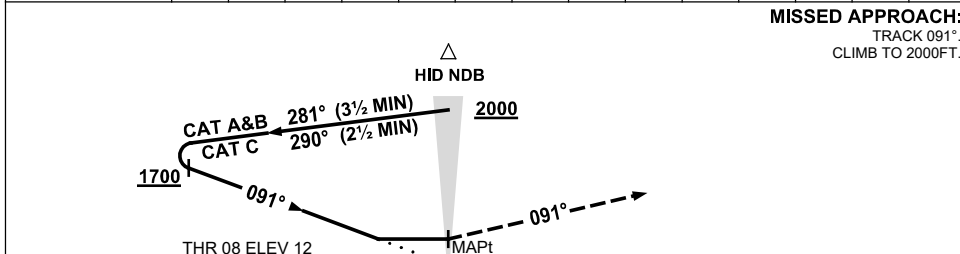
NDB RWY 08  
**HORN ISLAND, QLD (YHID)**

7 NOV 2019



DME DIST	NOT APPLICABLE				
ALT					

**MISSED APPROACH:**  
 TRACK 091°.  
 CLIMB TO 2000FT.



**NOTES**

1. MAX IAS:  
 INITIAL :  
 CAT A&B 140KT.  
 CAT C 210KT.
- \* 2. NO CIRCLING IN SECTOR SOUTH OF RWY 26 AND EAST OF RWY 32.
3. LANDING NOT PERMITTED RWY 32.

CATEGORY	A	B	C	D
S-I NDB	<b>930</b> (918-5.0)			NOT APPLICABLE
CIRCLING *	<b>970</b> (927-2.4)		<b>1030</b> (987-4.0)	
ALTERNATE	(1427-4.4)		(1487-6.0)	

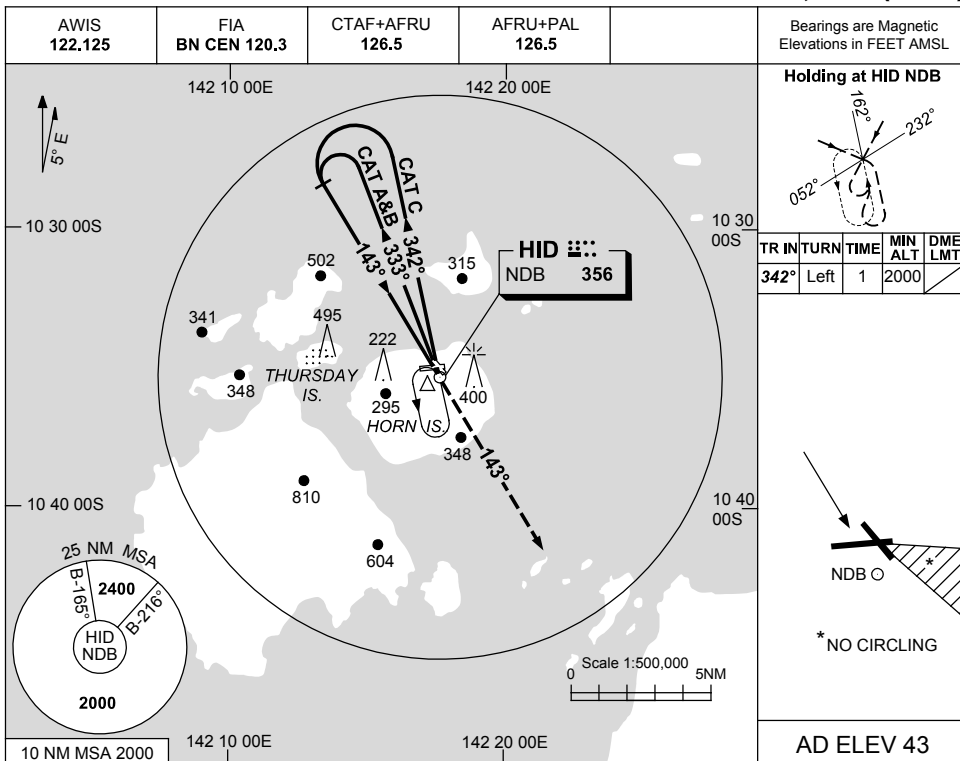
Changes: CAT C CIRCLING MINIMA, ALTERNATE CAT C MINIMA.

HIDNB01-161

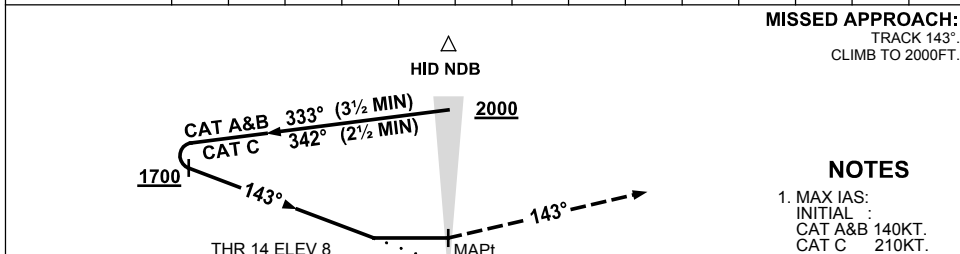
USE QNH

NDB RWY 14  
**HORN ISLAND, QLD (YHID)**

7 SEP 2023



DME DIST	NOT APPLICABLE			
ALT				



CATEGORY	A	B	C	D
S-I NDB	970 (962-5.0)			NOT APPLICABLE
CIRCLING *	970 (927-2.4)		1030 (987-4.0)	
ALTERNATE	(1427-4.4)		(1487-6.0)	

Changes: CAUTION NOTE.

HIDNB02-176