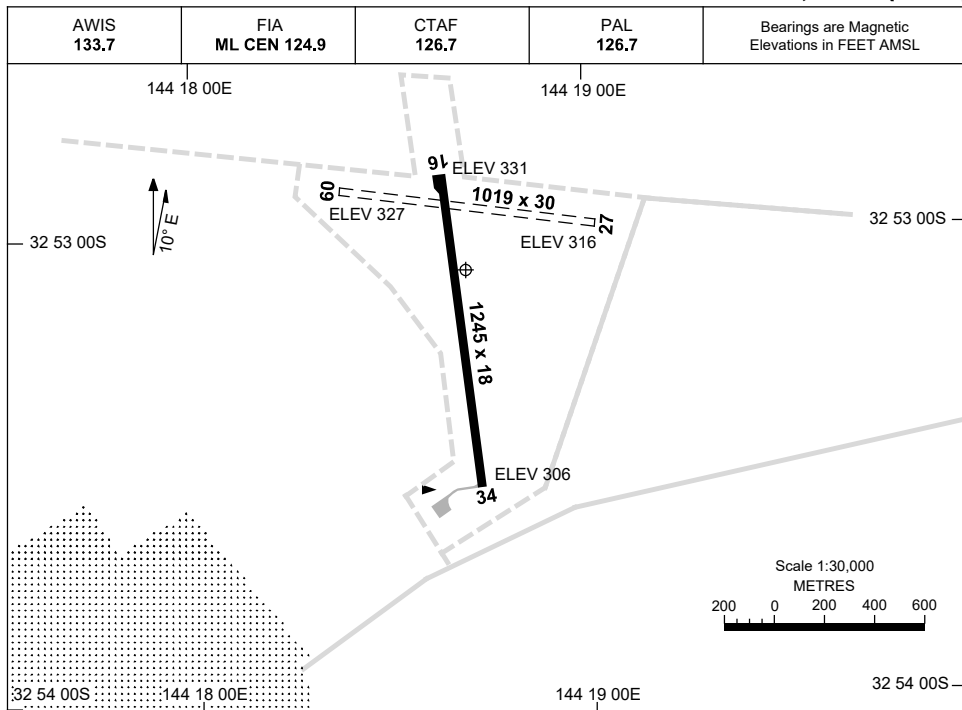


23 MAR 2023

AD ELEV 332
32 53 05S 144 18 42E

AERODROME CHART
IVANHOE, NSW (YIVO)



	AERODROME LIGHTING
RWY	TAXIWAY : BLUE EDGE RL : PAL 126.7, SDBY (15 MIN PN) FOR MEDI FLIGHTS ONLY
16 <small>164</small>	LIRL
<small>344</small> 34	LIRL

NOTES

1. AWIS PHONE 02 9353 6428.
2. ML CEN FIA 124.9 AVBL ABV 3500FT.

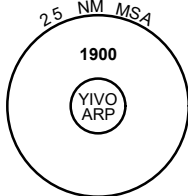
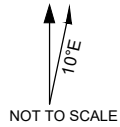
Changes: CAUTION NOTE REMOVED.

IVOAD01-174

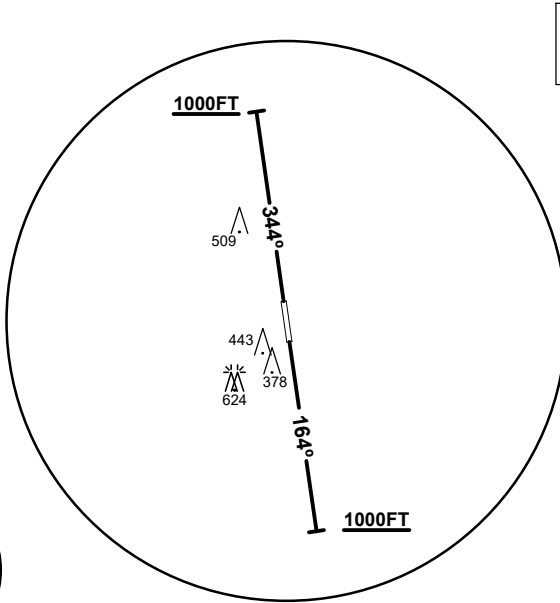
STANDARD INSTRUMENT DEPARTURE
IVANHOE ONE DEPARTURE
IVANHOE, NSW (YIVO)

13 JUN 2024

AWIS 133.7	FIA ML CEN 124.9	CTAF 126.7	PAL 126.7	BRG are MAG ELEV in FEET AMSL
---------------	---------------------	---------------	--------------	----------------------------------



10 NM MSA 1700



SPEED
MAX IAS 250KT
BELOW 10,000FT

GRAD: 3.3%

IVANHOE ONE DEPARTURE

RWY 16

- Track 164°
- At or above 1000FT turn as required
- Continue climb to 1900FT
- Intercept flight plan route

RWY 34

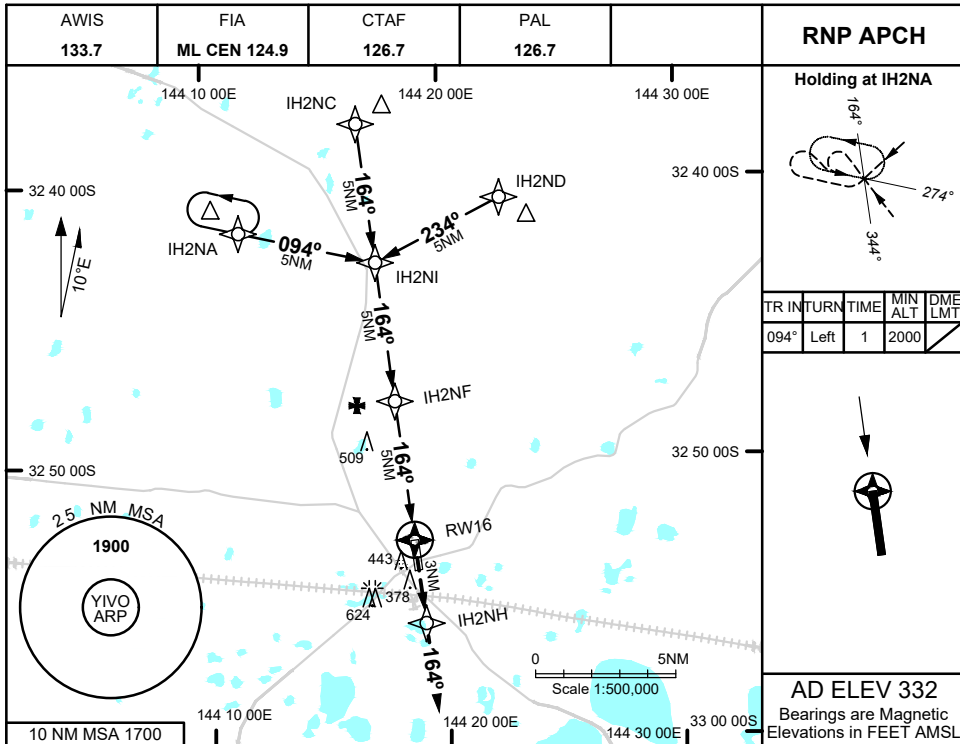
- Track 344°
- At or above 1000FT turn as required
- Continue climb to 1900FT
- Intercept flight plan route

NOTES

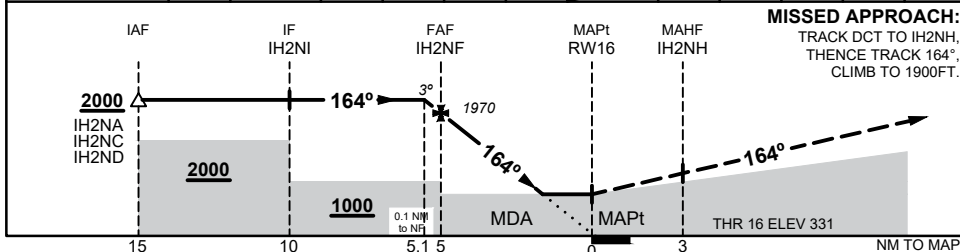
- NIL -



23 MAR 2023



NM TO NEXT WPT	0.1	IH2NF	4	3	2	1.4	RWY16				
ALT (3° APCH PATH)	2000	1970	1650	1340	1020	840					



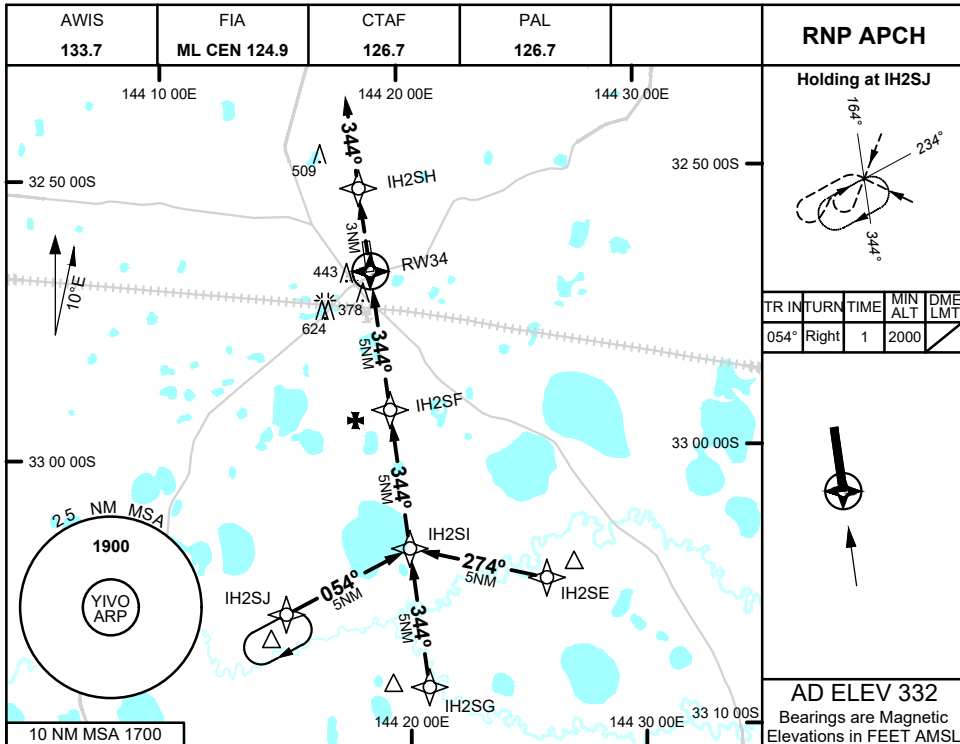
- NOTES**
- MAX IAS:
INITIAL : 210KTS

CATEGORY	A	B	C	D
LNAV	840 (508 - 2.9)			NOT APPLICABLE
CIRCLING	1040 (708 - 2.4)		1140 (808 - 4.0)	
ALTERNATE	(1208 - 4.4)		(1308 - 6.0)	

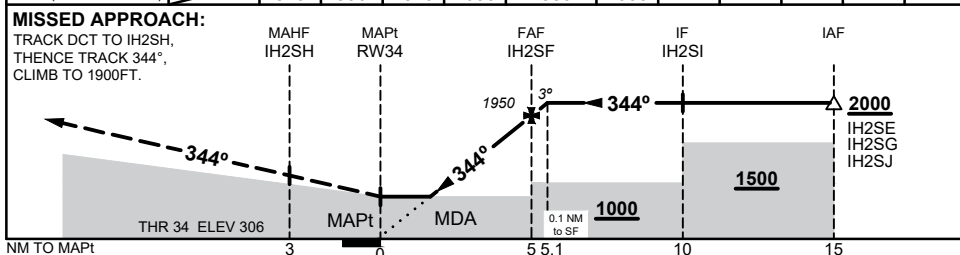
Changes: CIRCLING MINIMA, ALTERNATE MINIMA, 10 NM MSA, 624 FT OBST, Editorial

IVOGN01-174

23 MAR 2023



NM TO NEXT WPT	RW34	1.5	2	3	4	IH2SF	0.1				
ALT (3° APCH PATH)		840	990	1310	1630	1950	2000				



NOTES

- MAX IAS:
INITIAL : 210KTS

CATEGORY	A	B	C	D
LNAV	840 (534 - 3.0)			NOT APPLICABLE
CIRCLING	1040 (708 - 2.4)		1140 (808 - 4.0)	
ALTERNATE	(1208 - 4.4)		(1308 - 6.0)	

Changes: CIRCLING MINIMA, ALTERNATE MINIMA, 10 NM MSA, 624 FT OBST, Editorial

I/VOGN02-174