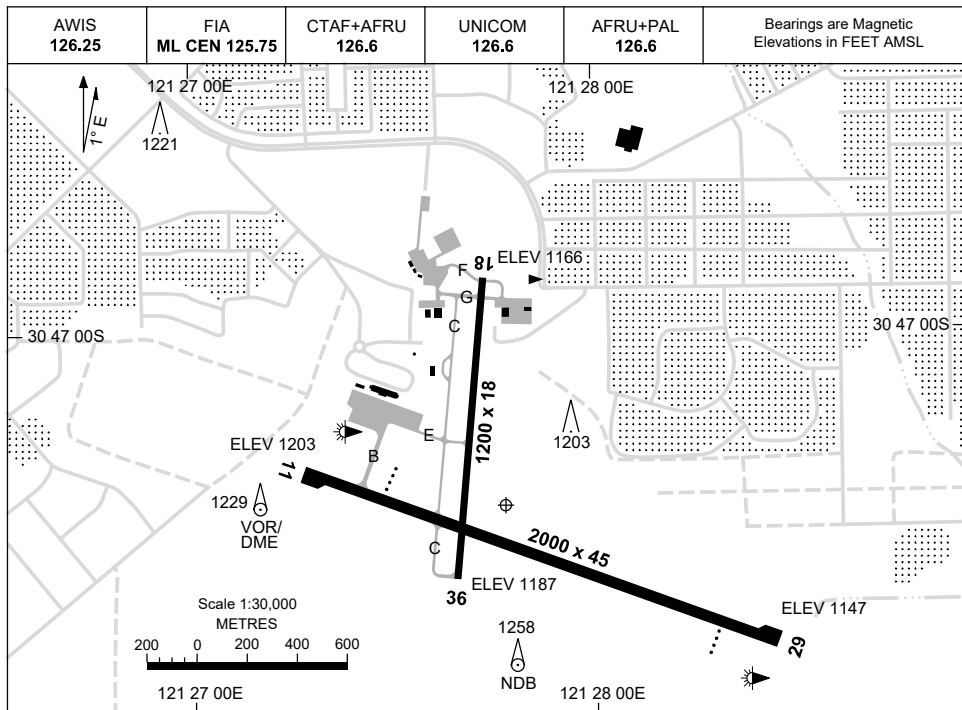


23 MAR 2023

AD ELEV 1203
30 47 22S 121 27 42E

AERODROME CHART
KALGOORLIE-BOULDER, WA (YPKG)



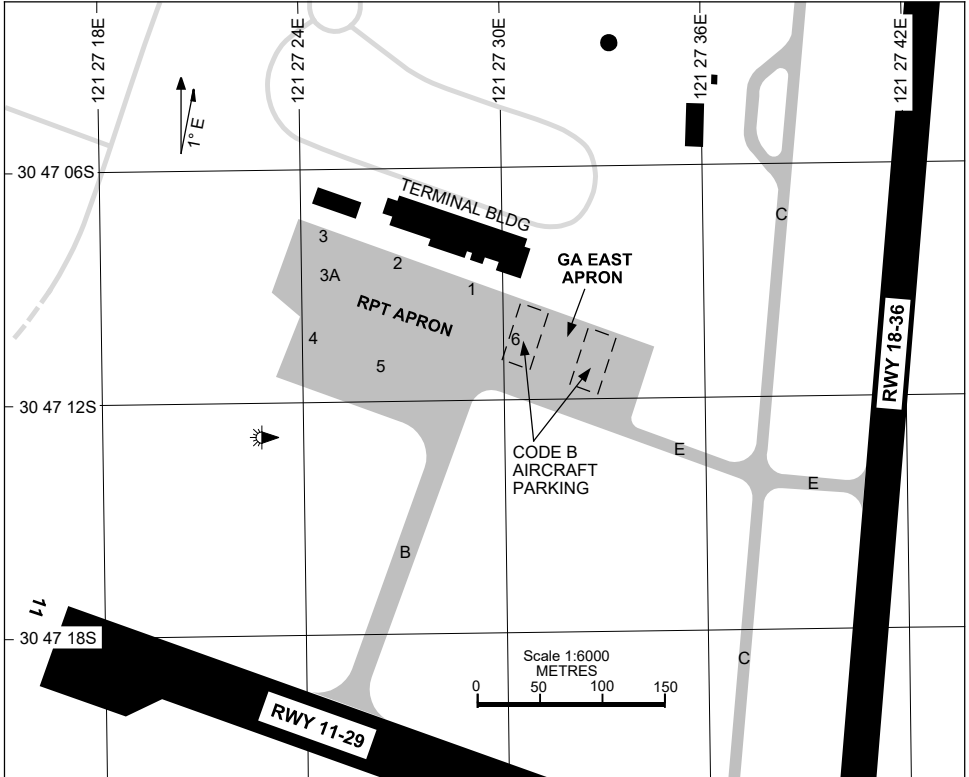
AERODROME LIGHTING	
RWY	TAXIWAYS : BLUE EDGE RL : AFRU+PAL 126.6 , SDBY (15 SEC)
11 ¹¹⁰ 290 29	PAPI LEFT SIDE 3.0° 48FT LIRL PAPI LEFT SIDE 3.0° 48FT LIRL
18 ¹⁸⁵ 005 36	LIRL LIRL

NOTES

Changes: PAPI, SDBY TIME, NOTES.

PKGAD01-174

25 MAR 2021



PARKING POSITION INFORMATION

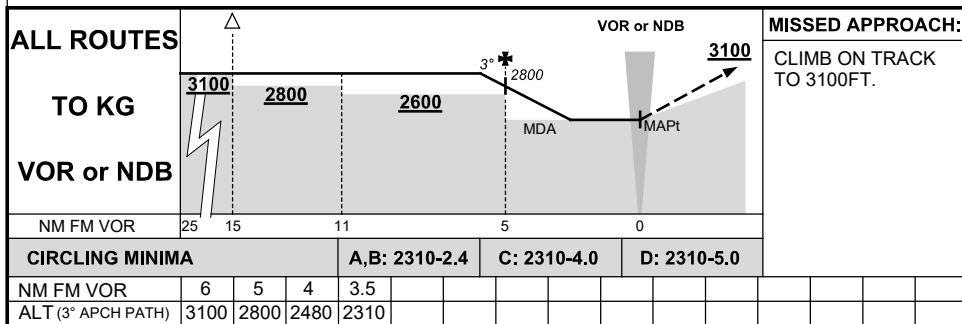
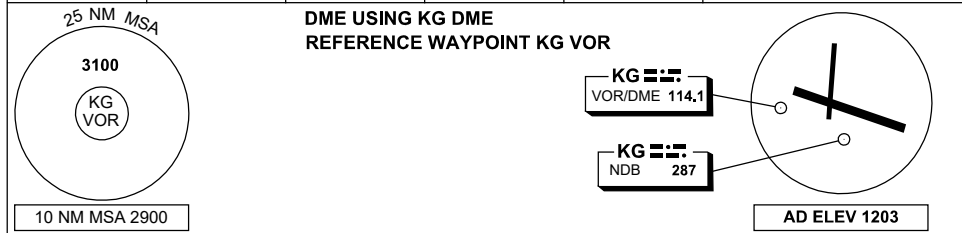
STAND	CO-ORDINATES		ELEV (ft)	CAPACITY	HYDRANT FUEL
1	30 47 09.20S	121 27 29.30E	1181	A320/B738	NIL
2	30 47 08.48S	121 27 27.09E	1181	A320	NIL
3	30 47 07.85S	121 27 24.51E	1181	A320/B738/C130	NIL
3A	30 47 08.65S	121 27 24.83E	1181	A333/B789	NIL
4	30 47 10.39S	121 27 24.15E	1181	A321/B738	NIL
5	30 47 11.12S	121 27 26.28E	1181	A321/B738	NIL
6	30 47 10.51S	121 27 30.40E	1181	DH8B/SF34	NIL

Changes: BAY 1A DELETED, BAY COORDS UPDATE, BAY 2-5 CAPACITY UPDATE, BAY 6 ADDED, "GA EAST" APN LABEL ADDED, CHART NAME CHANGE.

DME or GNSS ARRIVAL PROCEDURES KALGOORLIE-BOULDER, WA (YPKG)

28 NOV 2024

AWIS 126.25	FIA ML CEN 125.75	CTAF+AFRU 126.6	UNICOM 126.6	AFRU+PAL 126.6	Bearings are Magnetic Elevations in FEET AMSL
----------------	----------------------	--------------------	-----------------	-------------------	--

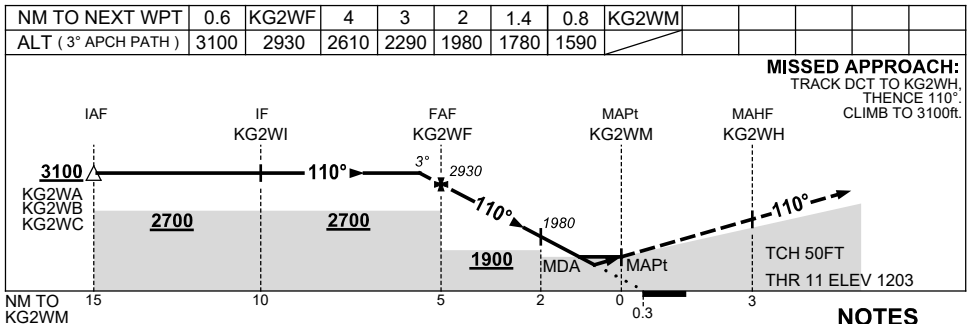
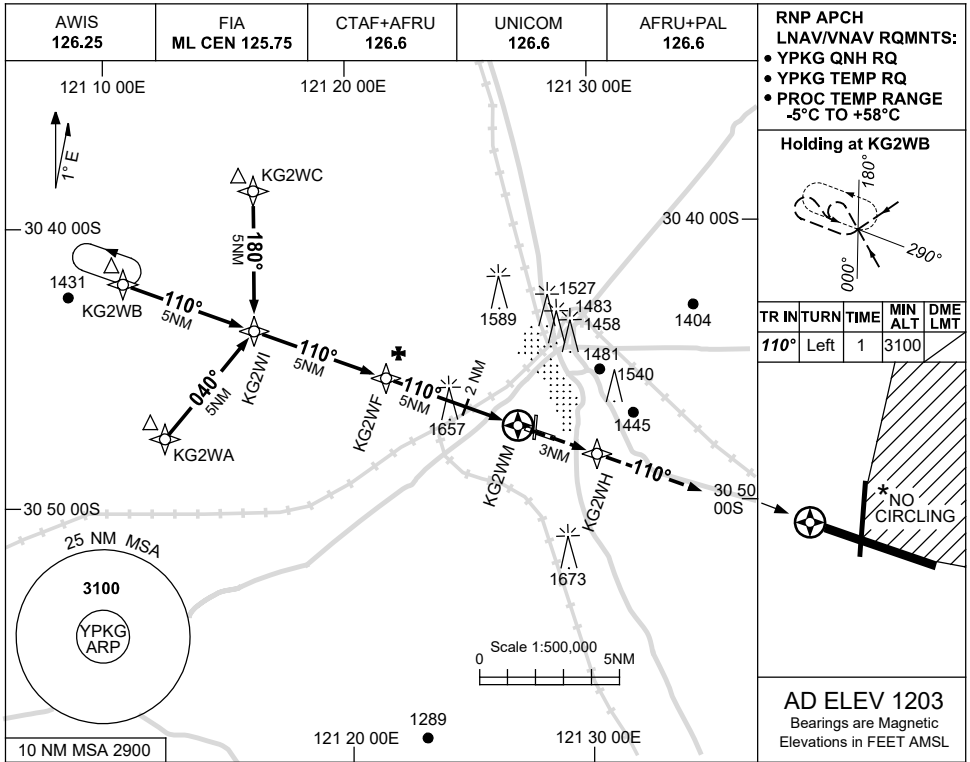


USE QNH

RNP Z RWY 11

28 NOV 2024

KALGOORLIE-BOULDER, WA (YPKG)



NOTES

1. MAX IAS:
INITIAL : 210KT.
2. NO CIRCLING IN
SECTOR NE OF RWY
11/29 AND RWY 18/36.

CAUTION:
1657FT RADIO MAST
2.5NM 280°KG VOR/
DME ON RWY APCH
PATH.

CATEGORY	A	B	C	D
LNAV/VNAV		1590 (387-2.2)		
LNAV		1780 (577-3.3)		
CIRCLING	2080 (877-4.4)		2180 (977-4.0) 2200 (997-5.0)	
ALTERNATE	(1377-4.4)		(1477-6.0) (1497-7.0)	

Changes: FROM SUP H117/24.

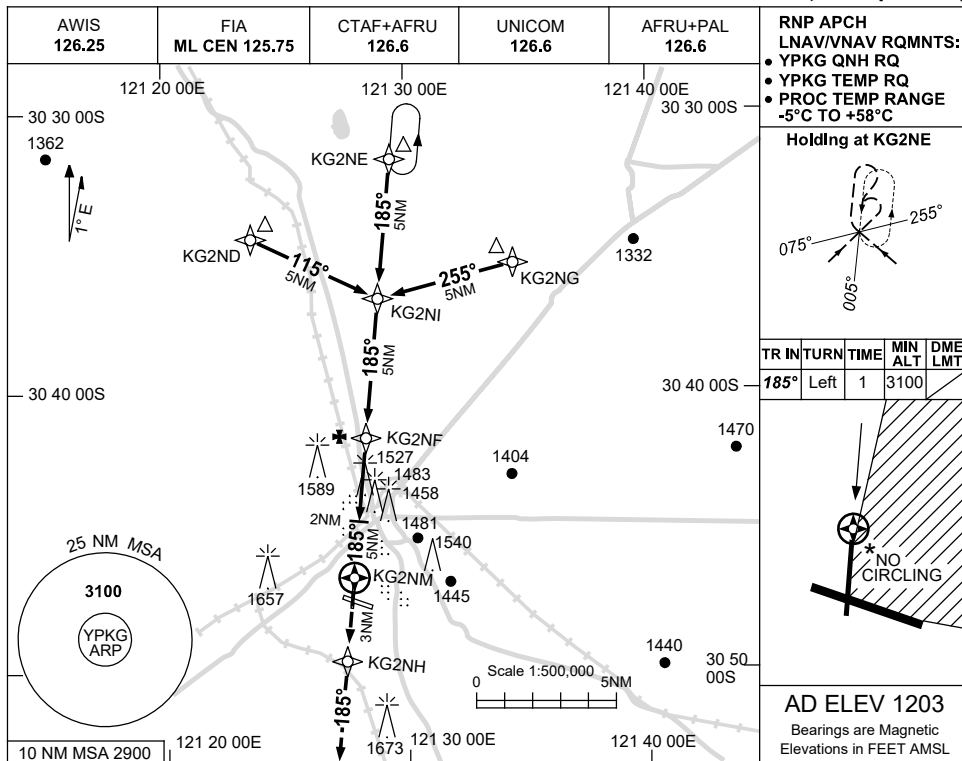
PKGNG01-181

USE QNH

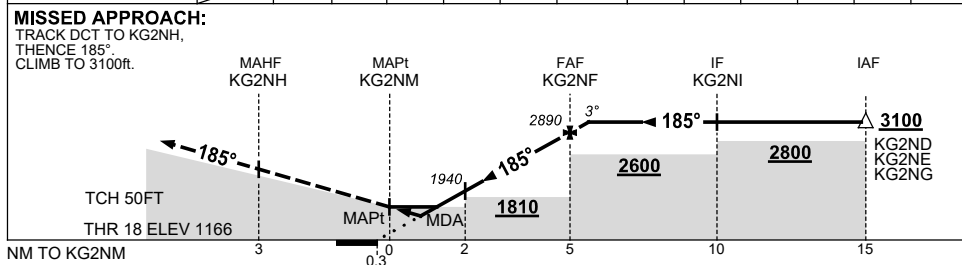
RNP RWY 18

28 NOV 2024

KALGOORLIE-BOULDER, WA (YPKG)



NM TO NEXT WPT	KG2NM	0.7	1.5	2	3	4	KG2NF	0.6				
ALT (3° APCH PATH)		1510	1780	1940	2260	2580	2890	3100				



NOTES

CATEGORY	A	B	C	D
LNAV/VNAV	1510 (344-1.9)		NOT APPLICABLE	
LNAV	1780 (614-3.5)			
CIRCLING	2080 (877-2.4)			
ALTERNATE	(1377-4.4)			

1. NO CIRCLING IN SECTOR NE OF RWY 11/29 AND RWY 18/36.
- CAUTION:**
1657FT RADIO MAST
2.5NM 280°KG VOR/
DME ON RWY APCH PATH.

Changes: FROM SUP H117/24.

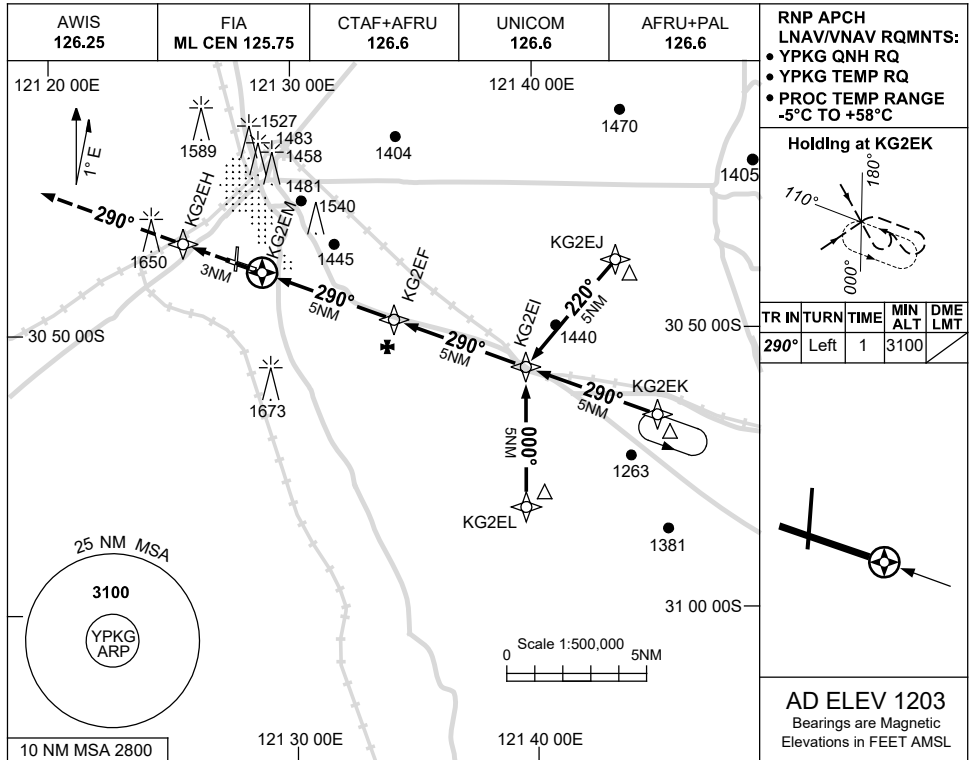
PKGGN02-181

USE QNH

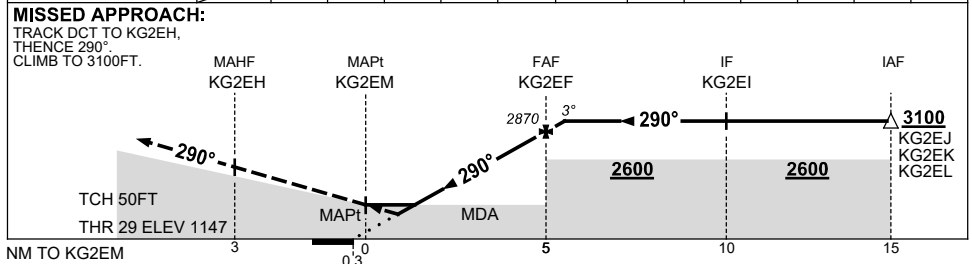
RNP Z RWY 29

7 SEP 2023

KALGOORLIE-BOULDER, WA (YPKG)



NM TO NEXT WPT	KG2EM	0.7	1.6	2	3	4	KG2EF	0.7					
ALT (3° APCH PATH)		1490	1780	1920	2240	2560	2870	3100					



NOTES

CATEGORY	A	B	C	D
LNAV/VNAV	1490 (343-1.9)			
LNAV	1780 (633-3.6)			
CIRCLING	2060 (857-2.4)	2160 (957-4.0)	2190 (987-5.0)	
ALTERNATE	(1357-4.4)		(1457-6.0) (1487-7.0)	

1. MAX IAS:
INITIAL : 210KT.
- CAUTION:**
 1650FT RADIO MAST
 2.5NM 280° KG
 VOR/DME.

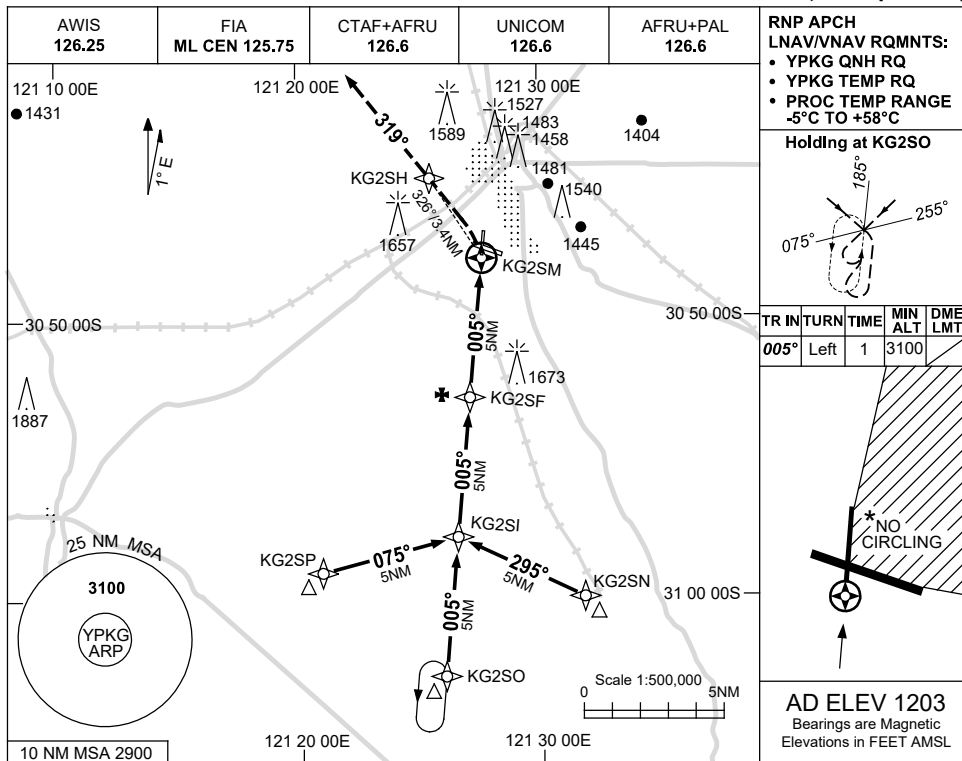
Changes: CHART TITLE, PBN SPECIFICATION BOX, Editorial. PKGGN03-176

USE QNH

RNP RWY 36

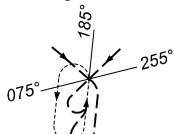
28 NOV 2024

KALGOORLIE-BOULDER, WA (YPKG)

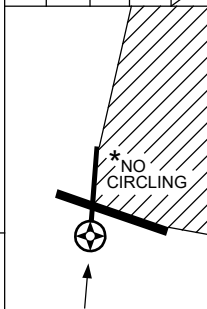


RNP APCH
LNAV/VNAV RQMTS:
• YPKG QNH RQ
• YPKG TEMP RQ
• PROC TEMP RANGE
-5°C TO +58°C

Holding at KG2SO



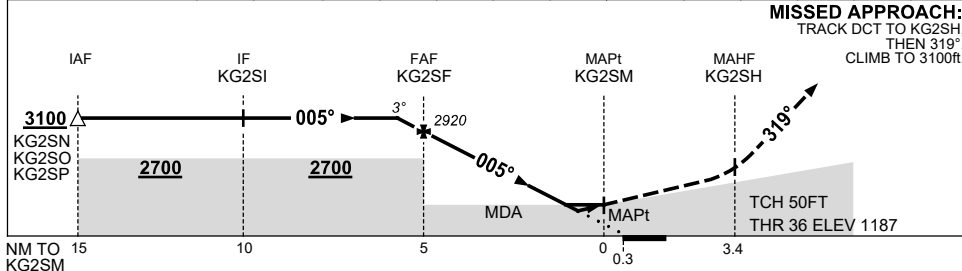
TR	INT	TURN	TIME	MIN ALT	DME LMT
005°	Left	1		3100	



AD ELEV 1203

Bearings are Magnetic
Elevations in FEET AMSL

NM TO NEXT WPT	0.6	KG2SF	4	3	2	1.4	1.1	KG2SM				
ALT (3° APCH PATH)	3100	2920	2600	2280	1960	1780	1690					



MISSED APPROACH:
TRACK DCT TO KG2SH,
THEN 319°.
CLIMB TO 3100ft.

NOTES

CATEGORY	A	B	C	D
LNAV/VNAV	1690 (503-2.8)		NOT APPLICABLE	
LNAV	1780 (593-3.4)			
CIRCLING	2080 (877-2.4)			
ALTERNATE	(1377-4.4)			

1. NO CIRCLING IN
SECTOR NE OF RWY
11/29 AND RWY 18/36.
CAUTION:
1657FT RADIO MAST
2.5NM 280°KG VOR/
DME ON RWY APCH
PATH.

Changes: FROM SUP H117/24.

PKG004-181

USE QNH

RNP U RWY 11 (AR)

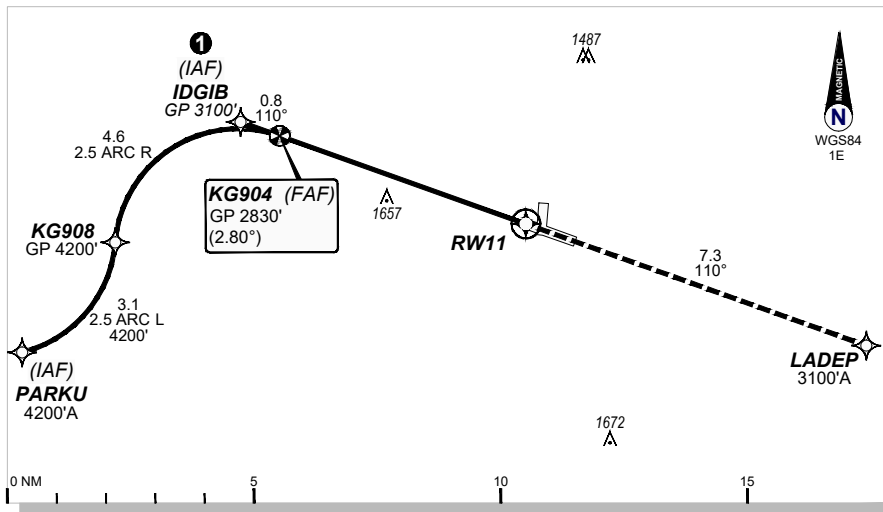
7 SEP 2023

KALGOORLIE-BOULDER (YPKG)

AWIS 126.25	FIA ML CEN 125.75	CTAF + AFRU 126.6	UNICOM 126.6	AFRU + PAL 126.6	RNP AR APCH -RF RQ -YPKG ACT QNH RQ -YPKG ACT TEMP RQ -PROCE TEMP RANGE -2°C TO +46°C
RNP AR RNV U 11	Apt Elev. 1203' TDZE 1203'	KG904 (FAF) GP 2830' (2.80°)	Trans Level FL110		

GE PROPRIETARY INFORMATION

① Latest position where the aircraft can join the procedure.

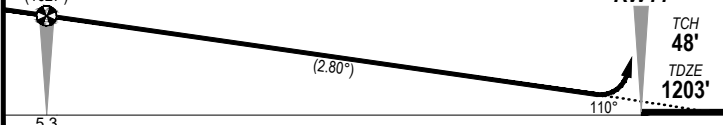


MISSED APPROACH:

Climb to **3100'** via the RNP AR
Missed Approach track to **LADEP**.



KG904
GP 2830'
(1627')



NOTES:

1. Minimum MAP gradient (AE) 3.5% to 3100 FT.

				RNP 0.30
				DA(H) 1543' (340')
C	C	C	C	1900m

FOR CASA APPROVED OPERATORS ONLY

202305171434COPYRIGHT 2023 NAVERUS, INC. USA

Changes: PROC NAME, RNAV (RNP) to RNP AR, Added PBN BOX, Removed Note 2, Removed background image.

PKGGN05-176

DO NOT USE FOR NAVIGATION



USE QNH

RNP U RWY 29 (AR)

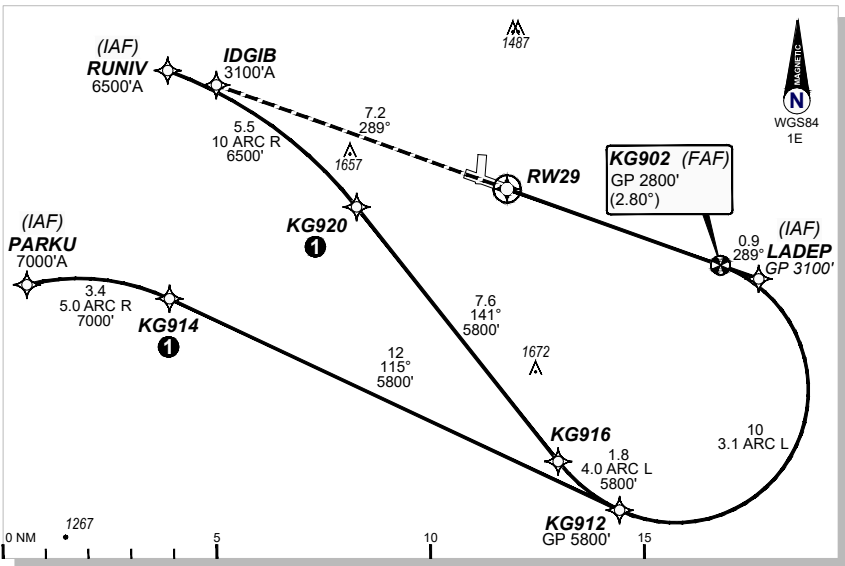
KALGOORLIE-BOULDER (YPKG)

7 SEP 2023

AWIS 126.25	FIA ML CEN 125.75	CTAF + AFRU 126.6	UNICOM 126.6	AFRU + PAL 126.6	RNP AR APCH -RF RQ -YPKG ACT QNH RQ -YPKG ACT TEMP RQ -PROCE TEMP RANGE -2°C TO +46°C
RNP AR RNV U 29	Apt Elev. 1203' TDZE 1147'	KG902 (FAF) GP 2800' (2.80°)	Trans Level FL110		

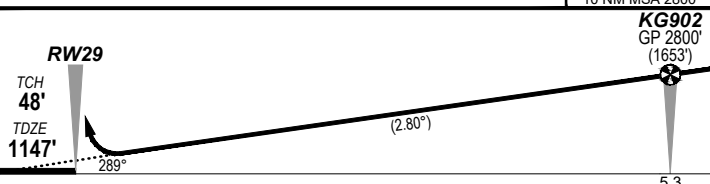
GE PROPRIETARY INFORMATION

① Latest position where the aircraft can join the procedure.



MISSED APPROACH:

Climb to 3100' via the RNP AR
Missed Approach track to IDGIB.



NOTES:

- 1. Minimum MAP gradient (AE) 3.8% to 3100 FT.

		RNP 0.20	RNP 0.30
		DA(H) 1429' (282)	DA(H) 1503' (356')
C	C	1500m	2000m

FOR CASA APPROVED OPERATORS ONLY

202305171434COP/RIGHT 2023 NAVERUS, INC. USA

Changes: PROC NAME, RNAV (RNP) to RNP AR, Added PBN BOX, Removed Note 2, Removed background image.

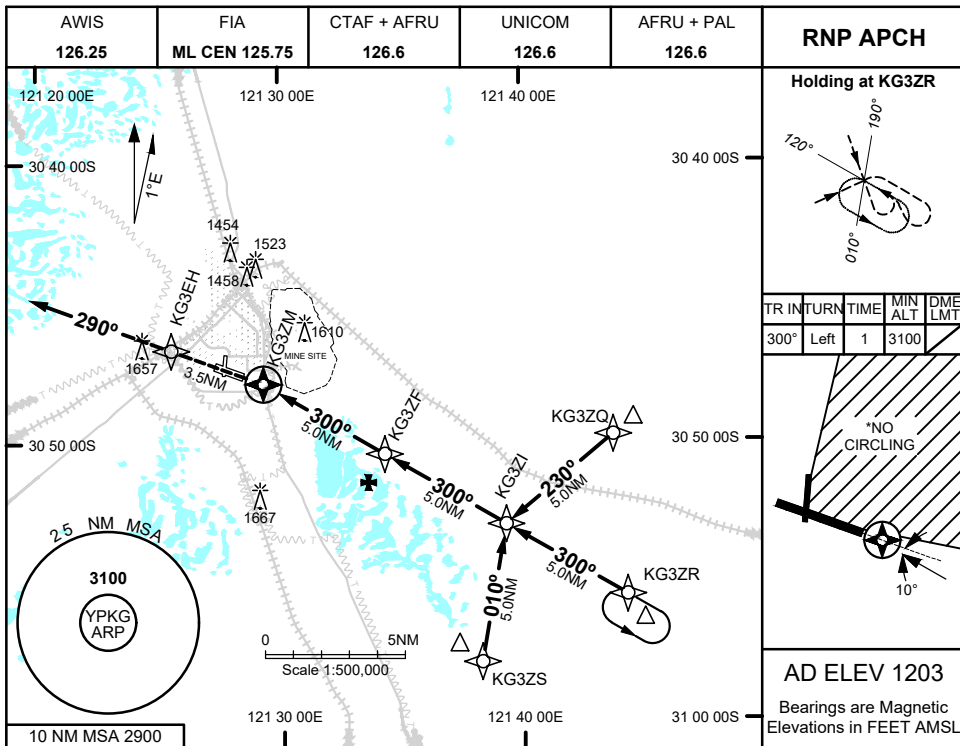
PKGGN06-176

DO NOT USE FOR NAVIGATION

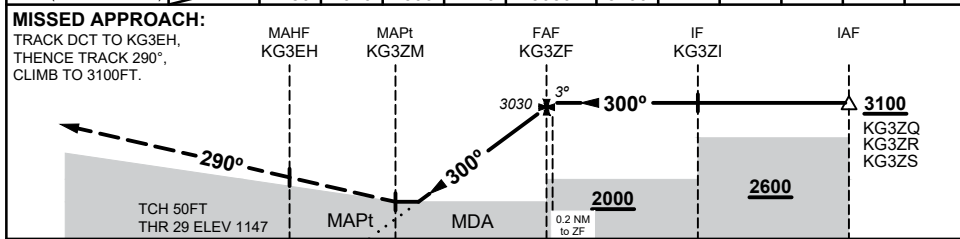


28 NOV 2024

KALGOORLIE-BOULDER, WA (YPKG)



NM TO NEXT WPT	KG3ZM	1.1	2	3	4	KG3ZF	0.2				
ALT (3° APCH PATH)		1780	2070	2390	2710	3030	3100				



NOTES

1. MAX IAS:
INITIAL : 210KTS
- *2.NO CIRCLING IN
SECTOR NE OF RWY
11/29 AND RWY 18/36
- CAUTION:**
1657FT RADIO MAST
3NM/277° FROM ARP

CATEGORY	A	B	C	D
LNAV	1780 (633 - 3.6)			
CIRCLING*	2080 (877 - 2.4)		2180 (977 - 4.0) 2200 (997 - 5.0)	
ALTERNATE	(1377 - 4.4)		(1477 - 6.0) (1497 - 7.0)	

Changes: FROM SUP H117/24

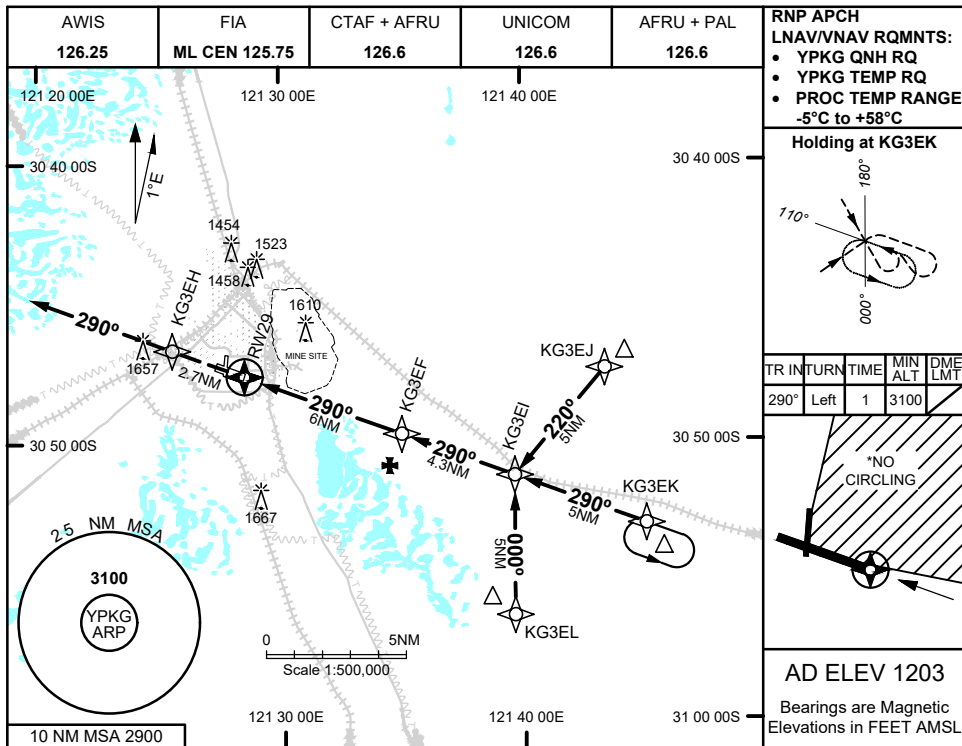
PKGGN07-181

USE QNH

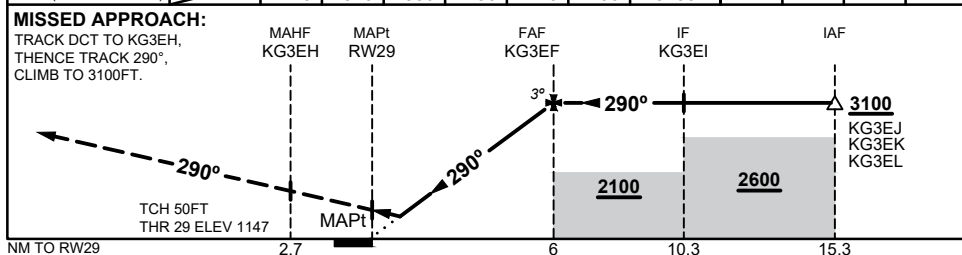
RNP Y RWY 29 (LNAV/VNAV ONLY)

KALGOORLIE-BOULDER, WA (YPKG)

28 NOV 2024



NM TO NEXT WPT	RW29	0.7	1	2	3	4	5	KG3EF			
ALT (3° APCH PATH)		1420	1520	1830	2150	2470	2790	3100			



NOTES

1. MAX IAS:
INITIAL : 210KTS
- *2.NO CIRCLING IN SECTOR NE OF RWY 11/29 AND RWY 18/36

CATEGORY	A	B	C	D
LNAV/VNAV	1420 (273 - 1.5)			
CIRCLING*	2080 (877 - 2.4)		2180 (977 - 4.0)	
ALTERNATE	(1377 - 4.4)		(1497 - 7.0)	

CAUTION:
1657FT RADIO MAST
3NM/277° FROM ARP

Changes: FROM SUP H117/24

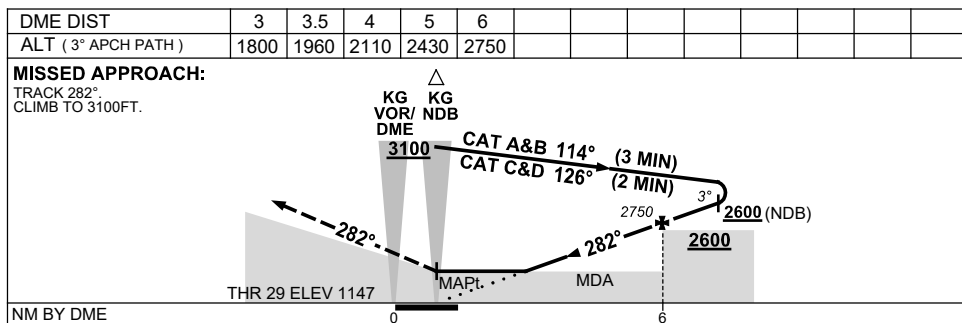
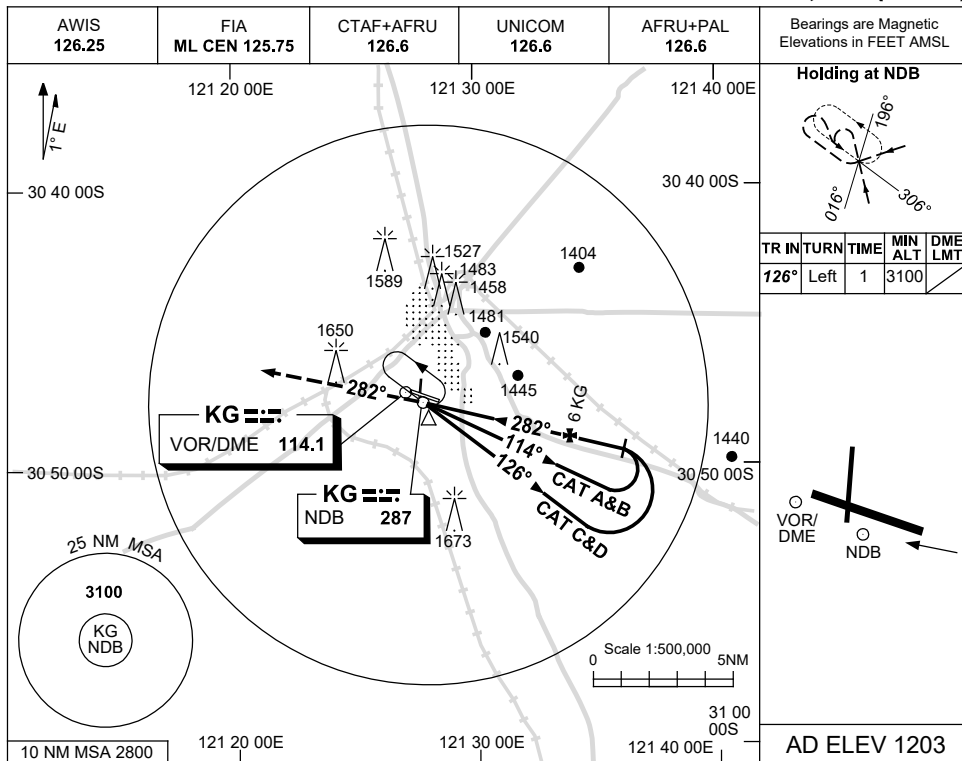
PKGGN08-181

USE QNH

NDB RWY 29

13 JUN 2024

KALGOORLIE-BOULDER, WA (YPKG)



NOTES

- MAX IAS:
INITIAL :
CAT C&D 210KT.
CAUTION:
1650FT RADIO MAST
2.5NM 280° KG
VOR/DME.

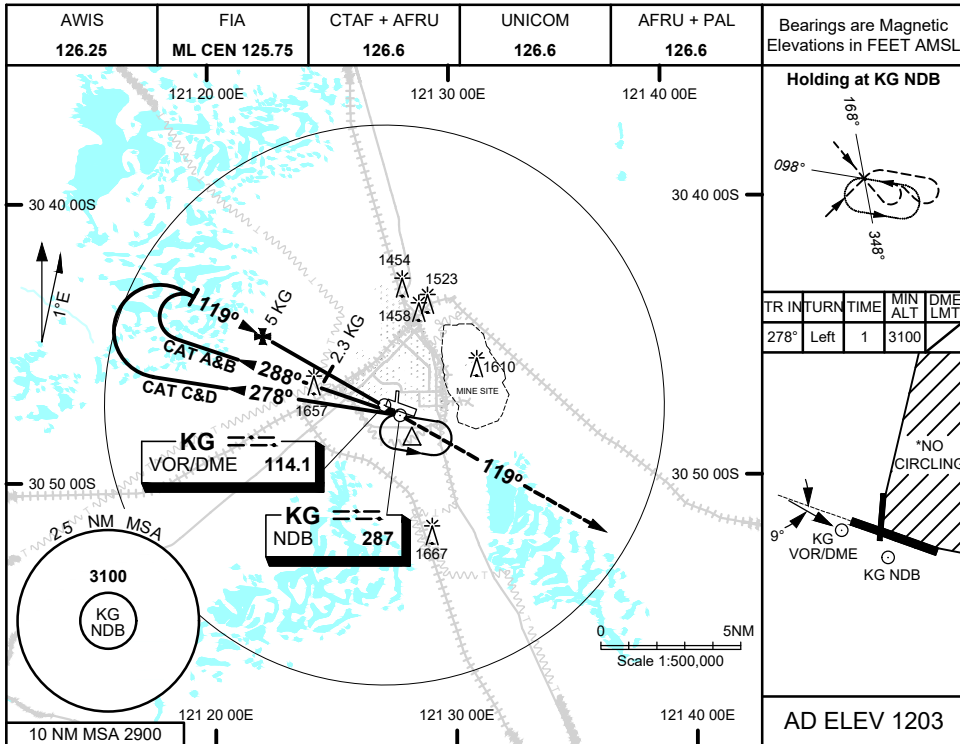
CATEGORY	A	B	C	D
S-I NDB		1960 (813-4.6)		
S-I NDB/DME		1800 (653-3.7)		
CIRCLING	2060 (857-2.4)		2160(957-4.0)	2190(987-5.0)
ALTERNATE	(1357-4.4)		(1457-6.0)	(1487-7.0)

Changes: CAT A/B MAX SPEED REMOVED, COORD FORMAT.

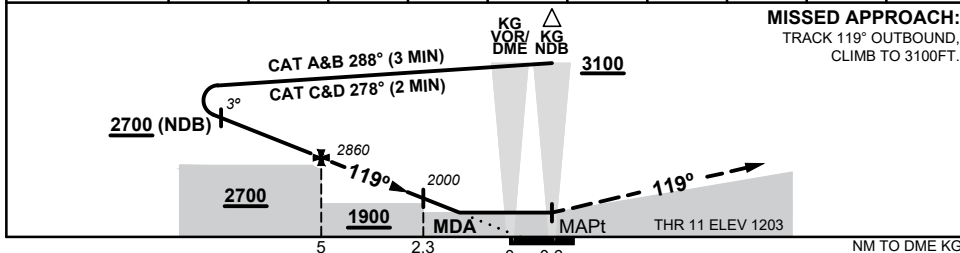
PKGNB01-179

28 NOV 2024

KALGOORLIE-BOULDER, WA (YPKG)



DIST BY DME	5.8	5	4	3	2.3	2	1.7			
ALT (3° APCH PATH)	3100	2860	2540	2220	2000	1900	1810			



NOTES

1. MAX IAS:
INITIAL : 210KTS
 - *2.NO CIRCLING IN
SECTOR NE OF RWY
11/29 AND RWY 18/36
- CAUTION:**
1657FT RADIO MAST
2.5NM KG DME/B-102°
TO KG NDB.

CATEGORY	A	B	C	D
S-I NDB	2050 (847 - 4.8)			
S-I NDB/DME	1810 (607 - 3.4)			
CIRCLING*	2080 (877 - 2.4)	2180 (977 - 4.0)		2200 (997 - 5.0)
ALTERNATE	(1377 - 4.4)		(1497 - 7.0)	

Changes: FROM SUP H117/24

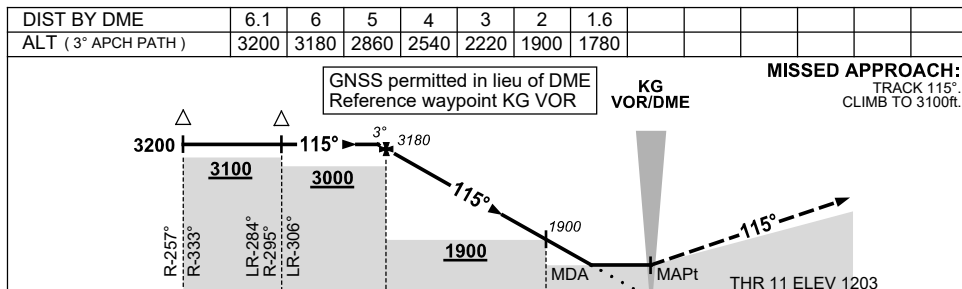
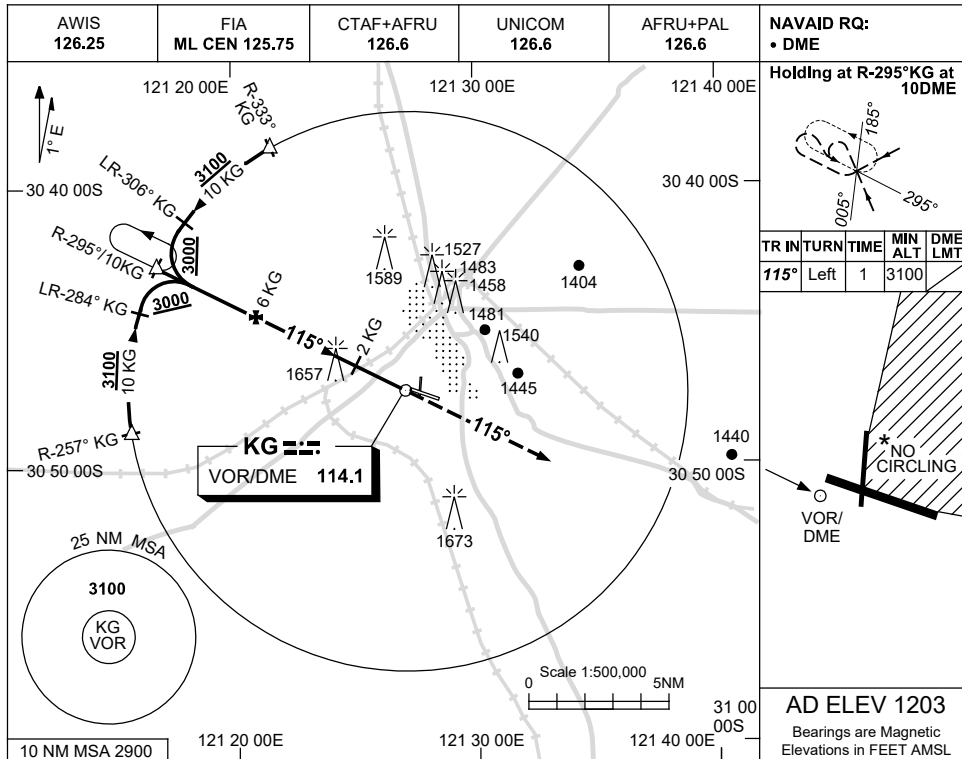
PKGNB02-181

USE QNH

VOR-Z RWY 11

28 NOV 2024

KALGOORLIE-BOULDER, WA (YPKG)



CATEGORY	A	B	C	D
S-I VOR/DME	1780 (577-3.3)			
CIRCLING	2080 (877-2.4)	2180 (977-4.0)	2200 (997-5.0)	
ALTERNATE	(1377-4.4)	(1477-6.0)	(1497-7.0)	

1. MAX IAS:
INITIAL : 210KT.
 2. NO CIRCLING IN
SECTOR NE OF RWY
11/29 AND RWY 18/36.
- CAUTION:**
1657FT RADIO MAST
2.5NM 280°KG VOR/
DME ON RWY APCH
PATH.

Changes: FROM SUP H117/24.

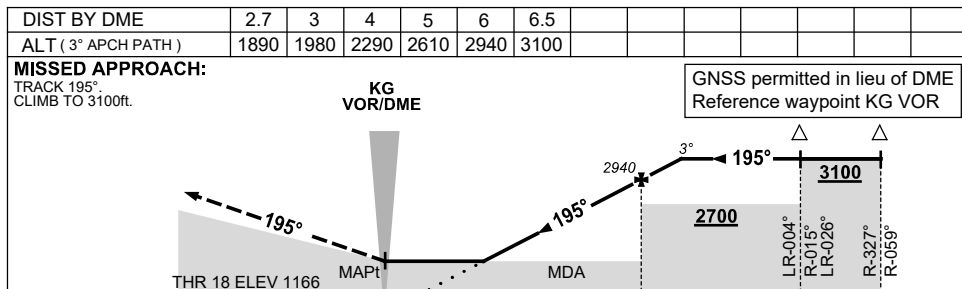
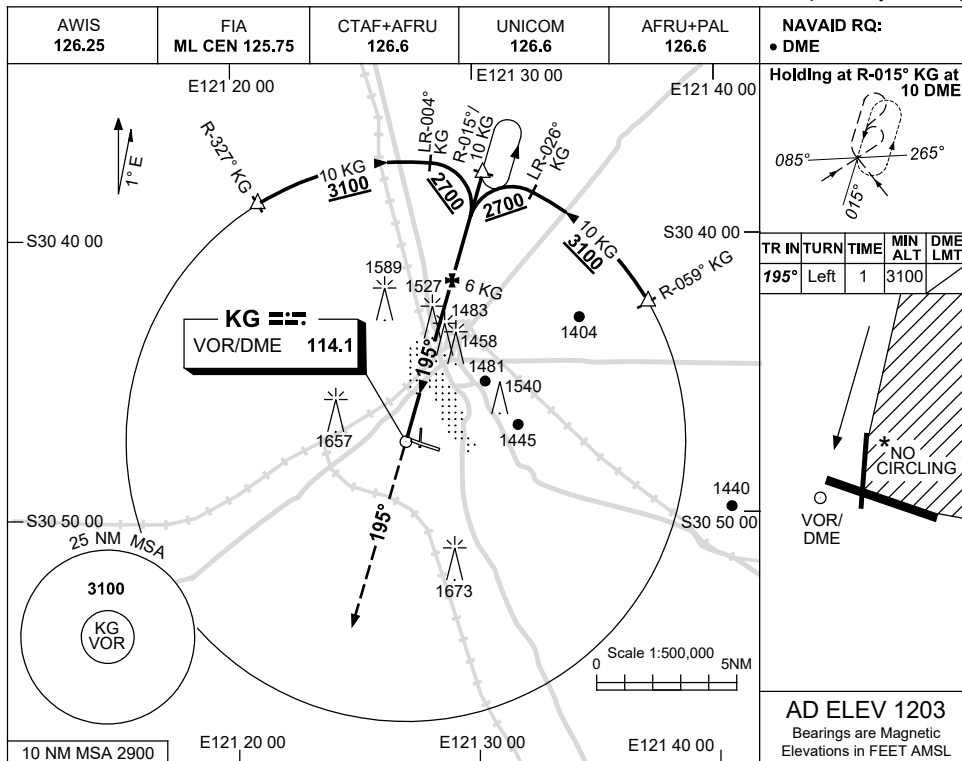
PKGVO01-181

USE QNH

VOR-Z RWY 18

28 NOV 2024

KALGOORLIE-BOULDER, WA (YPKG)



NM BY DME									
-----------	--	--	--	--	--	--	--	--	--

CATEGORY	A	B	C	D
S-I VOR/DME	1890 (724-4.1)		NOT APPLICABLE	
CIRCLING	2080 (877-2.4)			
ALTERNATE	(1377-4.4)			

NOTES

- MAX IAS:
INITIAL : 210KT.
- NO CIRCLING IN
SECTOR NE OF RWY
11/29 AND RWY 18/36.

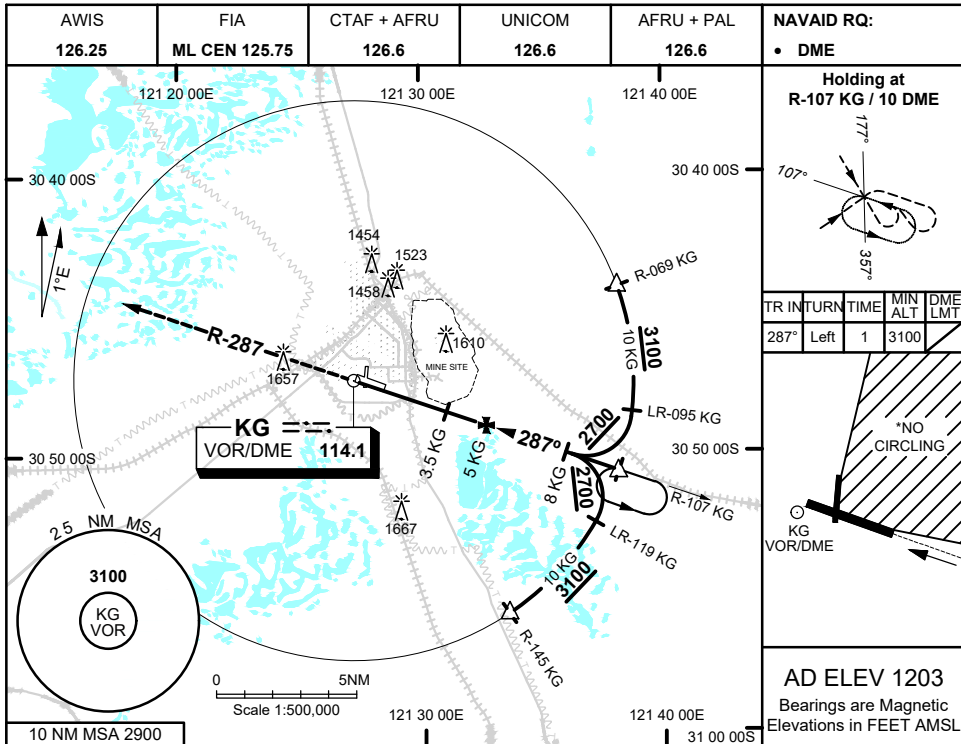
CAUTION:
1657FT RADIO MAST
2.5NM 280°KG VOR/
DME ON RWY APCH
PATH.

Changes: FROM SUP H117/24.

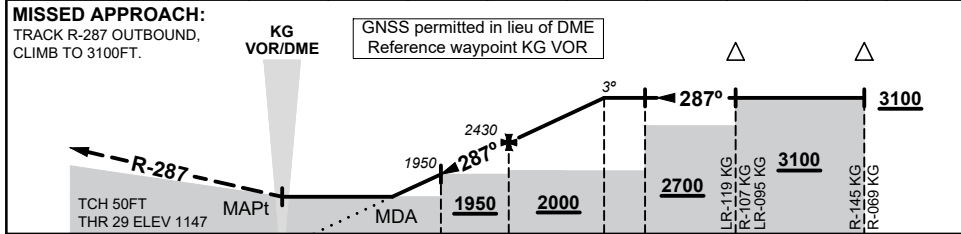
PKGVO02-181

28 NOV 2024

KALGOORLIE-BOULDER, WA (YPKG)



DIST BY DME	3	3.5	4	5	6	7	7.1		
ALT (3° APCH PATH)	1780	1950	2110	2430	2750	3060	3100		



NOTES

1. MAX IAS: INITIAL : 210KTS
- *2.NO CIRCLING IN SECTOR NE OF RWY 11/29 AND RWY 18/36

CATEGORY	A	B	C	D
S-I VOR	1780 (633 - 3.6)			
CIRCLING*	2080 (877 - 2.4)	2180 (977 - 4.0)	2200 (997 - 5.0)	
ALTERNATE	(1377 - 4.4)		(1497 - 7.0)	

CAUTION:
1657FT RADIO MAST
2.5NM/R-280 FROM KG VOR/DME.

Changes: FROM SUP H117/24

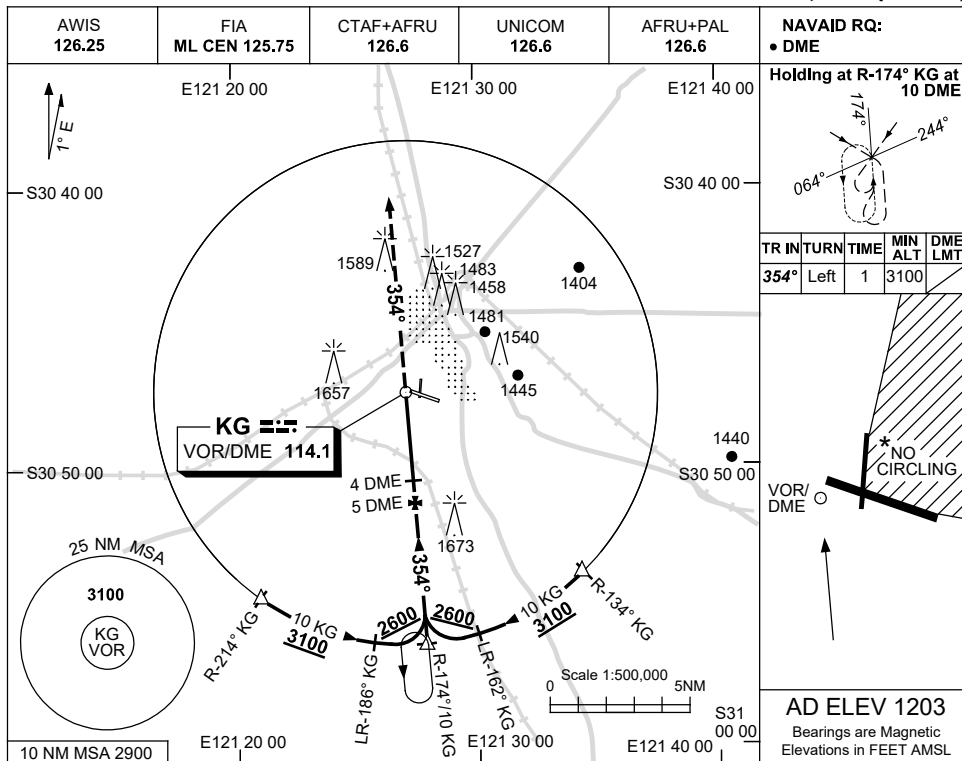
PKGVO03-181

USE QNH

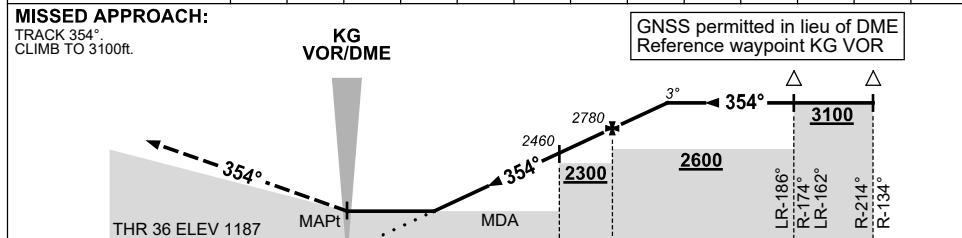
VOR-Z RWY 36

28 NOV 2024

KALGOORLIE-BOULDER, WA (YPKG)



DIST BY DME	1.9	2	3	4	5	6												
ALT (3° APCH PATH)	1780	1820	2150	2460	2780	3100												



NM BY DME	0	4	5	10
-----------	---	---	---	----

NOTES

- MAX IAS:
INITIAL : 210KT.
- NO CIRCLING IN
SECTOR NE OF RWY
11/29 AND RWY 18/36.

CATEGORY	A	B	C	D
S-I VOR/DME	1780 (593-3.4)		NOT APPLICABLE	
CIRCLING	2080 (877-2.4)			
ALTERNATE	(1377-4.4)			

CAUTION:
1657FT RADIO MAST
2.5NM 280°KG VOR/
DME ON RWY APCH
PATH.

Changes: FROM SUP H117/24.

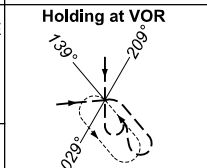
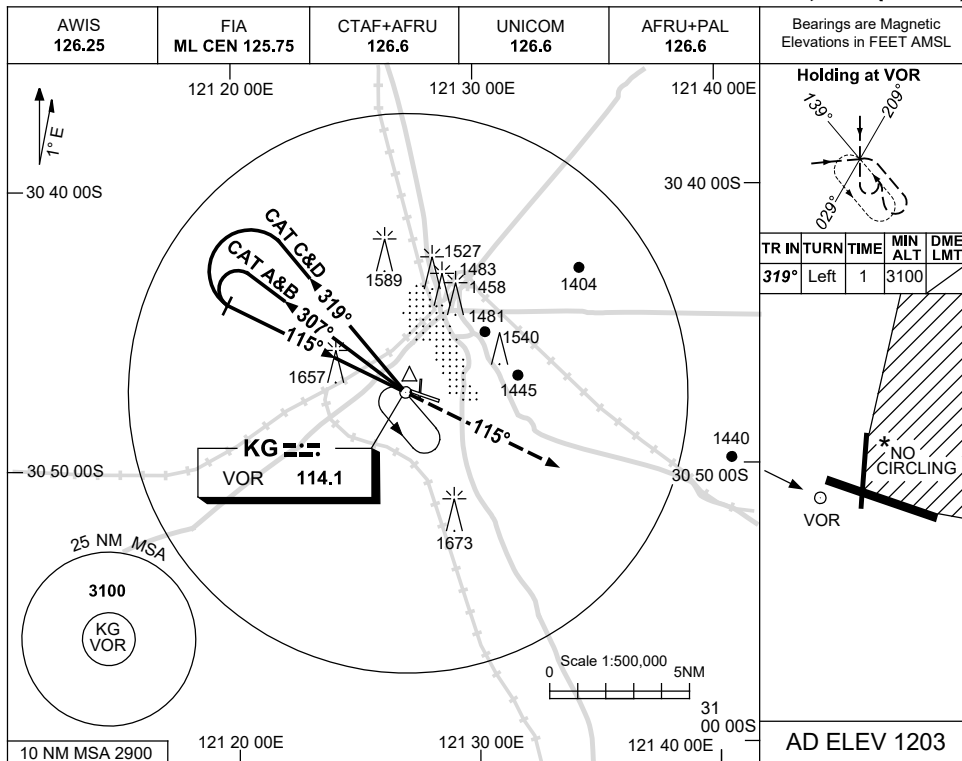
PKG004-181

USE QNH

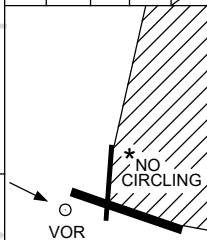
VOR-Y RWY 11

28 NOV 2024

KALGOORLIE-BOULDER, WA (YPKG)

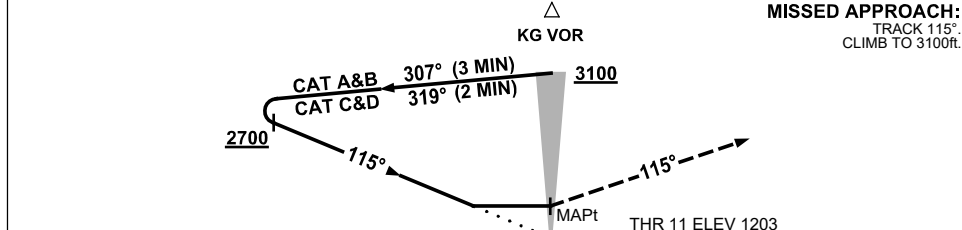


TR	IN	TURN	TIME	MIN	DME
				ALT	LMT
319°	Left	1		3100	



AD ELEV 1203

DIST BY DME	NOT APPLICABLE
ALT	



NOTES

- MAX IAS:
INITIAL : 210KT.
 - NO CIRCLING IN SECTOR NE OF RWY 11/29 AND RWY 18/36.
- CAUTION:**
1657FT RADIO MAST
2.5NM 280°KG VOR/
DME ON RWY APCH
PATH.

CATEGORY	A	B	C	D
S-I VOR	2030 (827-4.7)			
CIRCLING	2080 (877-2.4)	2180 (977-4.0)	2200 (997-5.0)	
ALTERNATE	(1377-4.4)	(1477-6.0)	(1497-7.0)	

Changes: FROM SUP H117/24.

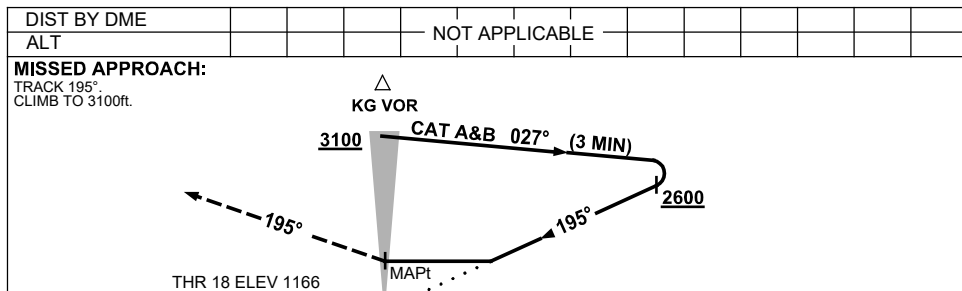
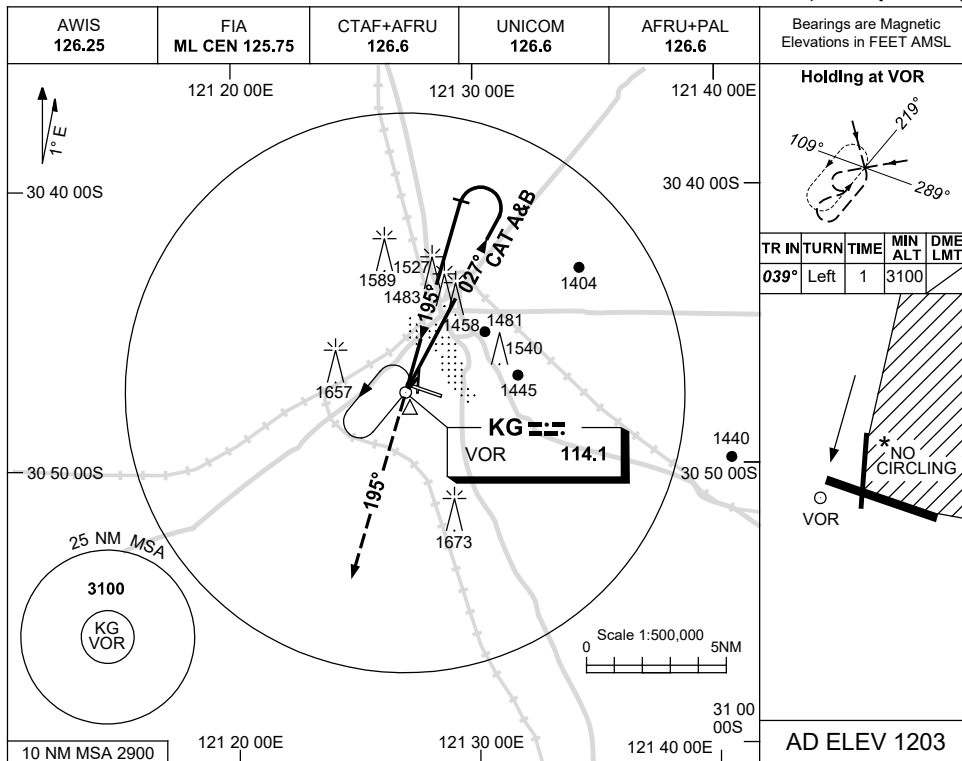
PKGVO05-181

USE QNH

VOR-Y RWY 18

28 NOV 2024

KALGOORLIE-BOULDER, WA (YPKG)



NOTES

CATEGORY	A	B	C	D
S-I VOR	1940 (774-4.4)		NOT APPLICABLE	
CIRCLING	2080 (877-2.4)			
ALTERNATE	(1377-4.4)			

- NO CIRCLING IN SECTOR NE OF RWY 11/29 AND RWY 18/36.
CAUTION: 1657FT RADIO MAST 2.5NM 280°KG VOR/ DME ON RWY APCH PATH.

Changes: FROM SUP H117/24.

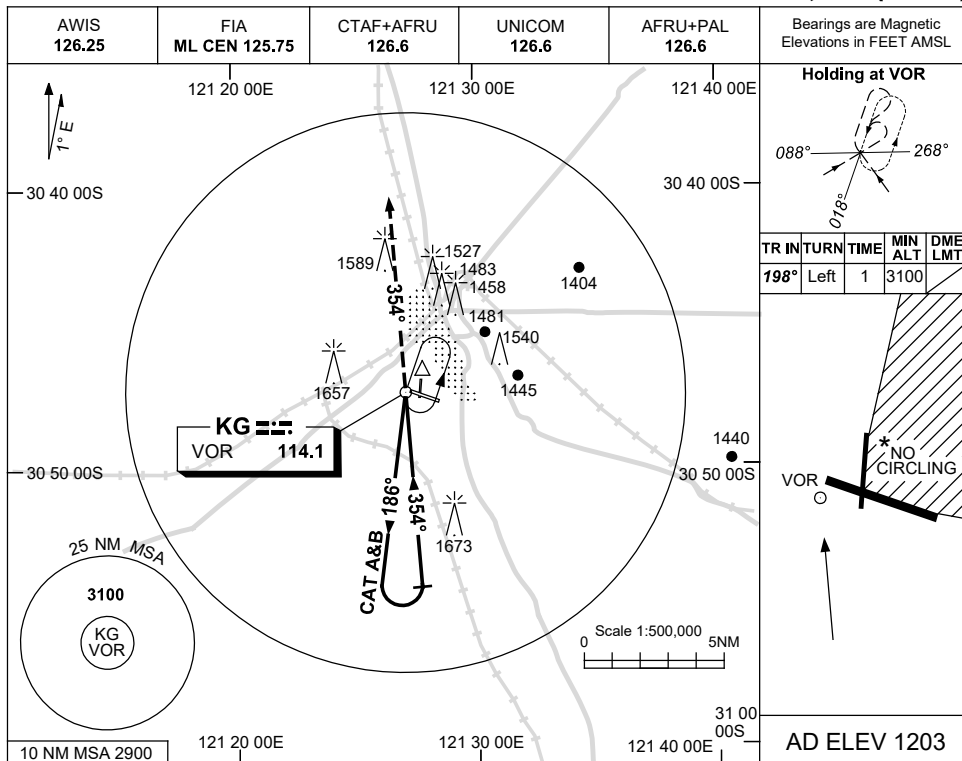
PKGVO06-181

USE QNH

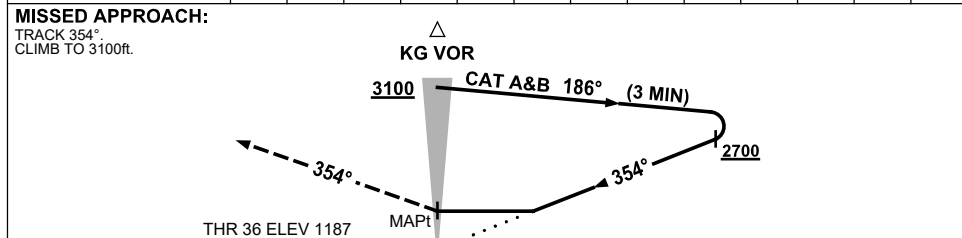
VOR-Y RWY 36

28 NOV 2024

KALGOORLIE-BOULDER, WA (YPKG)



DIST BY DME	NOT APPLICABLE
ALT	



NOTES

CATEGORY	A	B	C	D
S-I VOR	2000 (813-4.6)		NOT APPLICABLE	
CIRCLING	2080 (877-2.4)			
ALTERNATE	(1377-4.4)			

- NO CIRCLING IN SECTOR NE OF RWY 11/29 AND RWY 18/36.
CAUTION: 1657FT RADIO MAST 2.5NM 280°KG VOR/ DME ON RWY APCH PATH.

Changes: FROM SUP H117/24.

PKGVO08-181