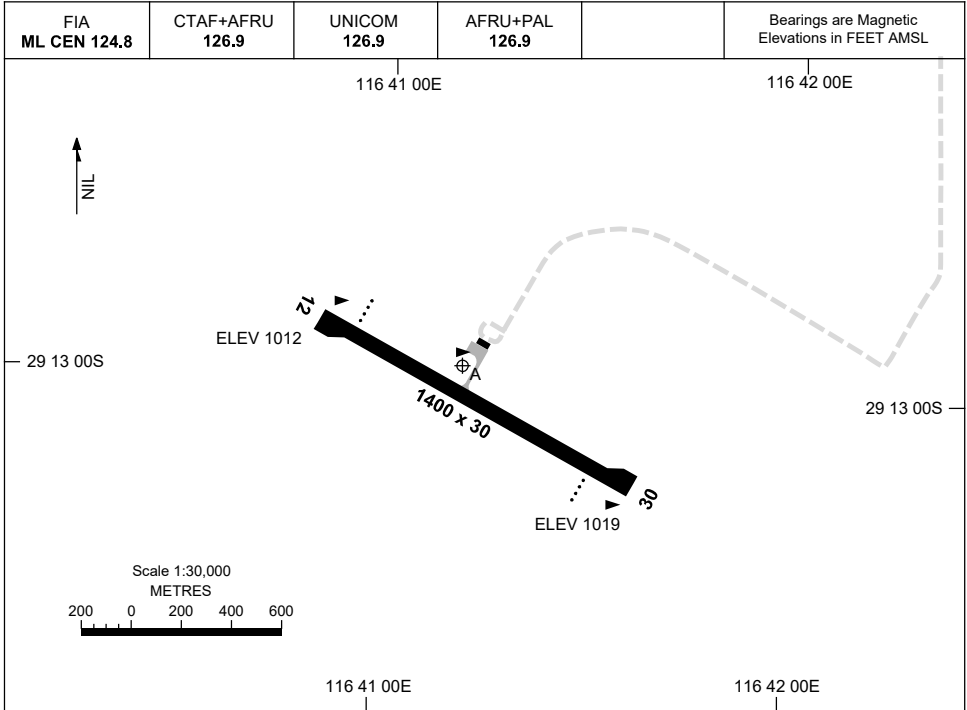


15 JUN 2023

AD ELEV 1019
29 12 58S 116 41 12E

AERODROME CHART
KARARA, WA (YKAR)



| | |
|--------------------------|---|
| | AERODROME LIGHTING |
| RWY | RL : AFRU+PAL 126.9 ; PTBL IN EMERG ONLY (2 HR PN). |
| 12 ¹¹⁷ | PAPI 3.0° 41.5FT PTBL |
| ²⁹⁷ 30 | PAPI 3.0° 41.5FT PTBL |

NOTES

1. FIA FREQ 124.8 AVBL IN CIRCUIT AREA.
2. PAPI POWER SUPPLIED BY GENERATORS. ALLOW 15 SECONDS FOR GENERATORS TO START UP AND POSITIVE CONFIRMATION OF AD LGT ACTIVATION COMMUNICATED THROUGH CTAF. PAPI INTENSITY HN MANUALLY CONTROLLED BY ARO VIA CTAF 126.9.

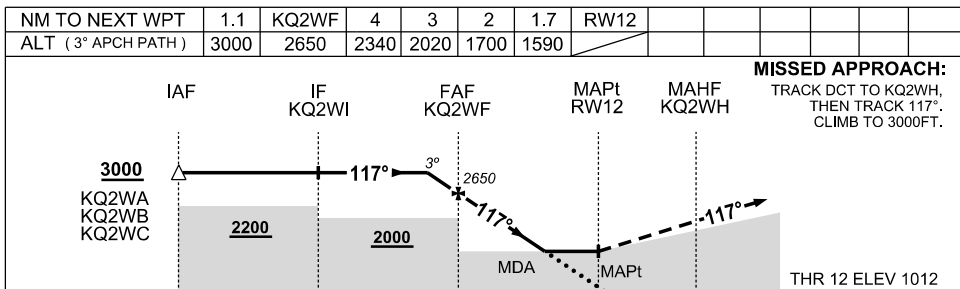
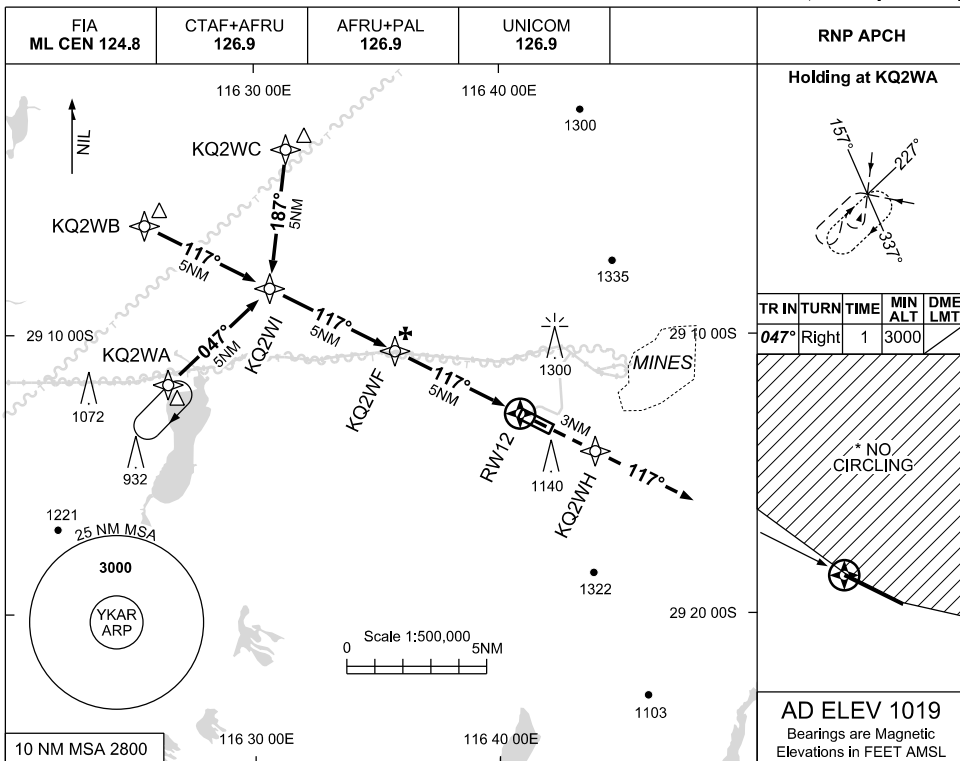
Changes: TWY A AND TERMINAL.

KARAD01-175

7 SEP 2023

USE QNH

RNP RWY 12
KARARA, WA (YKAR)



NOTES

| CATEGORY | A | B | C | D |
|------------|----------------|---|---------------|----------------|
| LNAV | 1590 (571-3.2) | | | NOT AUTHORISED |
| CIRCLING * | 1740 (721-2.4) | | 1910(891-4.0) | |
| ALTERNATE | (1221-4.4) | | (1391-6.0) | |

- 1. MAX IAS : INITIAL: 210KT
- *2. NO CIRCLING NORTH OF RWY 12/30.

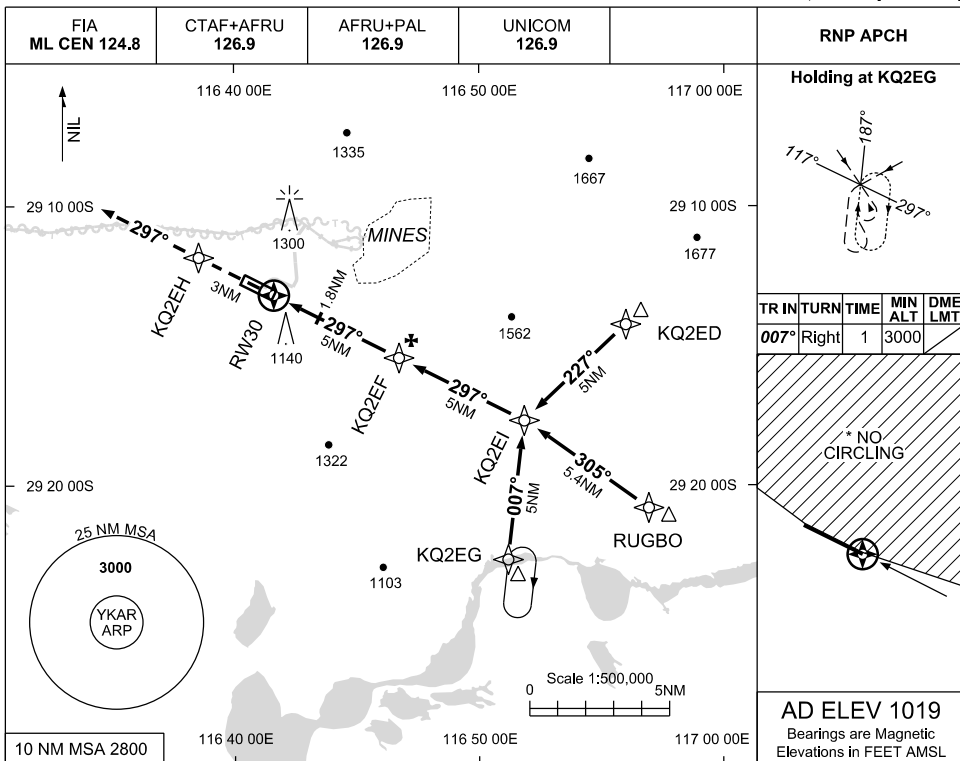
Changes: CHART TITLE, PBN SPECIFICATION BOX, EDITORIAL

KARGN01-176

USE QNH

RNP RWY 30
KARARA, WA (YKAR)

7 SEP 2023



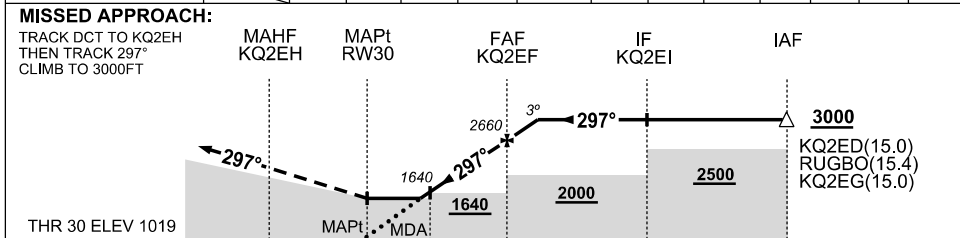
Holding at KQ2EG

| TR IN | TURN | TIME | MIN ALT | DME LMT |
|-------|-------|------|---------|---------|
| 007° | Right | 1 | 3000 | |

*** NO CIRCLING**

AD ELEV 1019
 Bearings are Magnetic
 Elevations in FEET AMSL

| NM TO NEXT WPT | RW30 | 1.8 | 2 | 3 | 4 | KQ2EF | 1.1 | | | | |
|--------------------|------|------|------|------|------|-------|------|--|--|--|--|
| ALT (3° APCH PATH) | | 1640 | 1710 | 2020 | 2340 | 2660 | 3000 | | | | |



NOTES

| CATEGORY | A | B | C | D |
|------------|----------------|---|---------------|----------------|
| LNAV | 1640 (621-3.4) | | | NOT AUTHORISED |
| CIRCLING * | 1740 (721-2.4) | | 1910(891-4.0) | |
| ALTERNATE | (1221-4.4) | | (1391-6.0) | |

1. MAX IAS : INITIAL: 210KT
 *2. NO CIRCLING NORTH OF RWY 12/30.

Changes: CHART TITLE, PBN SPECIFICATION BOX, EDITORIAL

KARGN02-176

