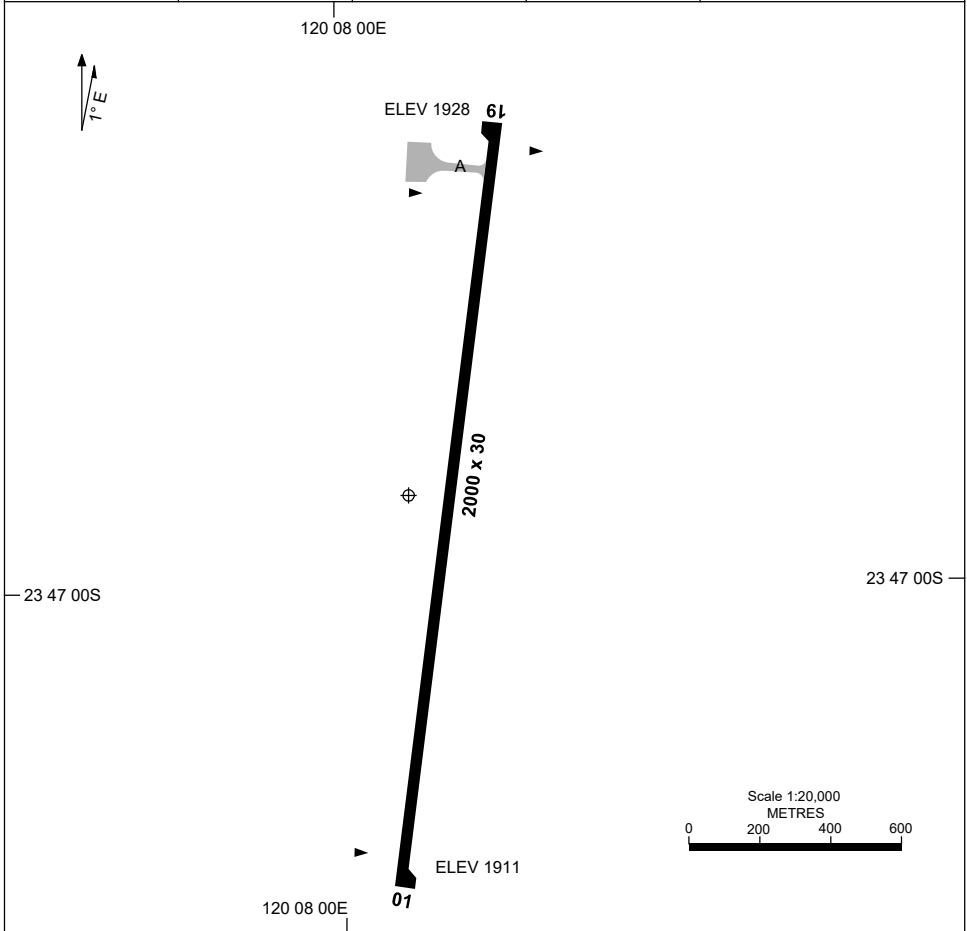


7 SEP 2023

AD ELEV 1928
23 46 52S 120 08 06E

AERODROME CHART
KARLAWINDA MINE, WA (YKWA)

| | | | | |
|---------------------|---------------|--|--|--|
| FIA ML CEN 123.4 | CTAF 122.0 | | | Bearings are Magnetic Elevations in FEET AMSL |
|---------------------|---------------|--|--|--|



| | |
|------------|------------------------------------|
| RWY | AERODROME LIGHTING |
| | RL : PTBL (EMERG ONLY , 90 MIN PN) |
| 01 007 | PTBL |
| 187 19 | PTBL |

NOTES

Changes: SCALE.

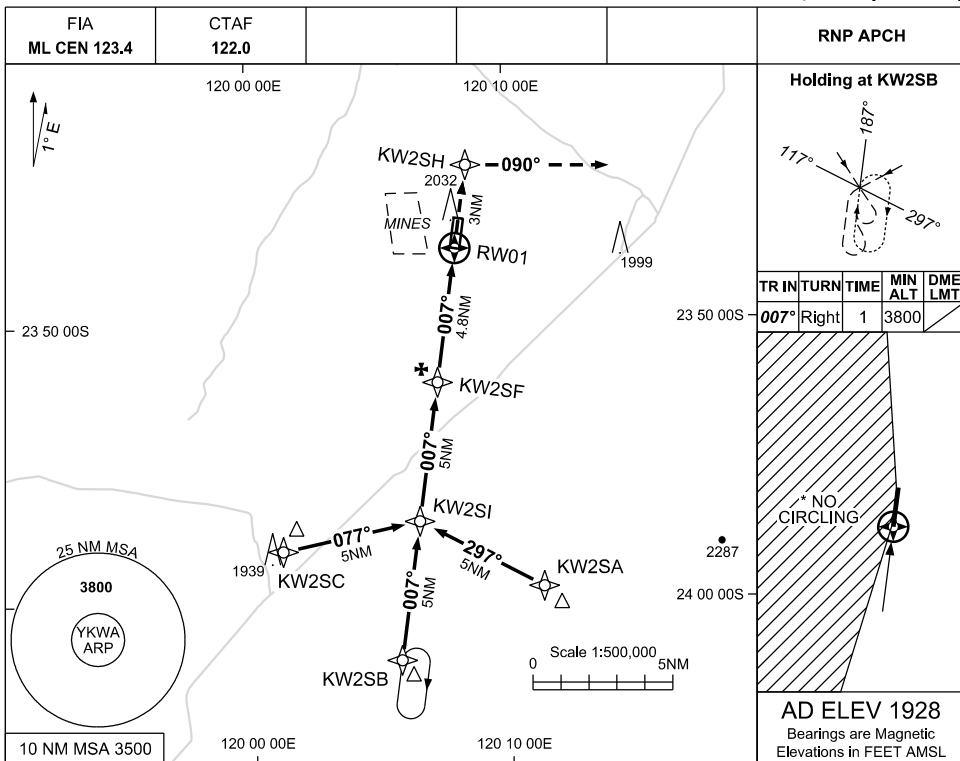
KWAAD01-176

USE QNH

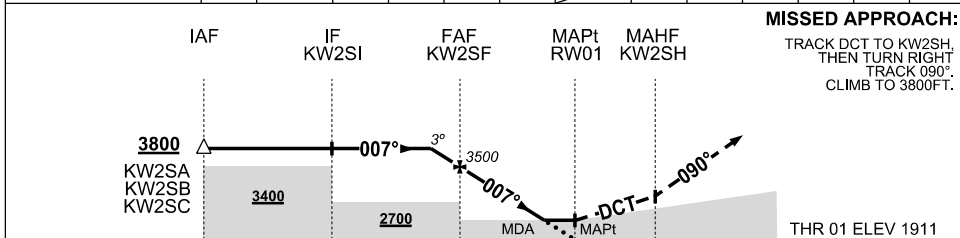
RNP RWY 01

30 NOV 2023

KARLAWINDA MINE, WA (YKWA)



| | | | | | | | | | | | | | |
|--------------------|------|-------|------|------|------|------|------|--|--|--|--|--|--|
| NM TO NEXT WPT | 0.9 | KW2SF | 4 | 3 | 2 | 1.4 | RW01 | | | | | | |
| ALT (3° APCH PATH) | 3800 | 3500 | 3230 | 2920 | 2600 | 2420 | | | | | | | |



NOTES

- MAX IAS:
INITIAL: 210KT
MAP TURN: 210KT
- NO CIRCLING WEST OF RWY 01/19
- CAUTION: YNWN PROCS ADJACENT TO NW
- CAUTION: BLASTING REFER ERSA

| CATEGORY | A | B | C | D |
|------------|------------------|---|---------------|----------------|
| LNAV | 2420 (509 - 2.9) | | | NOT AUTHORISED |
| * CIRCLING | 2550 (622-2.4) | | 2690(762-4.0) | |
| ALTERNATE | (1122-4.4) | | (1262-6.0) | |

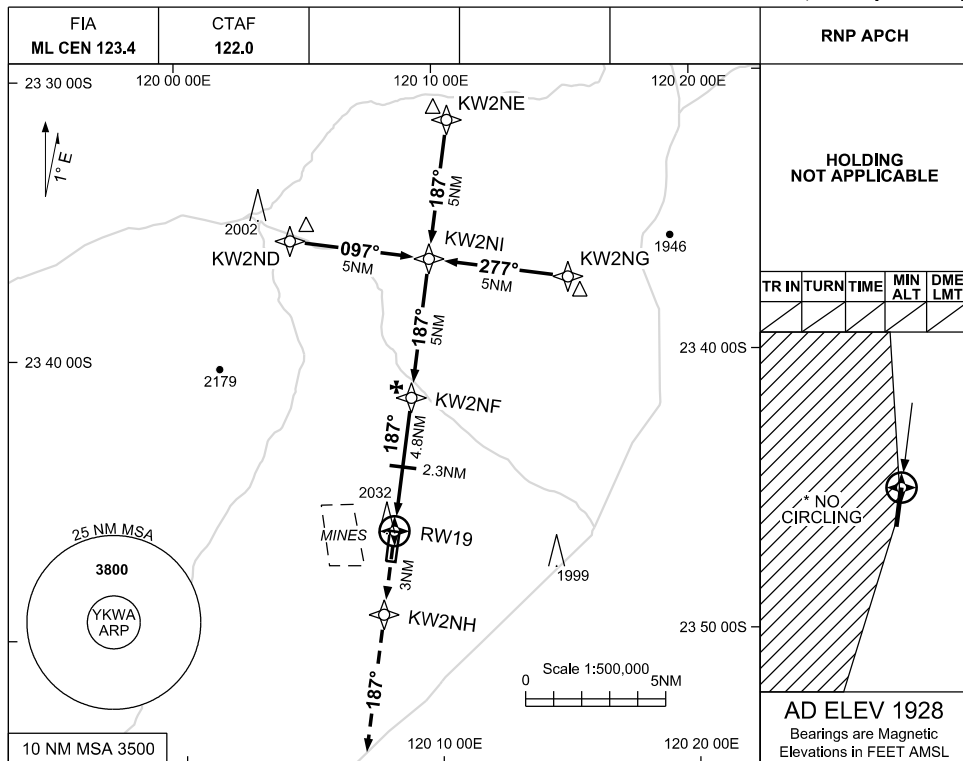
Changes: CHART TITLE, PBN SPECIFICATION BOX

KWAGN01-177

30 NOV 2023

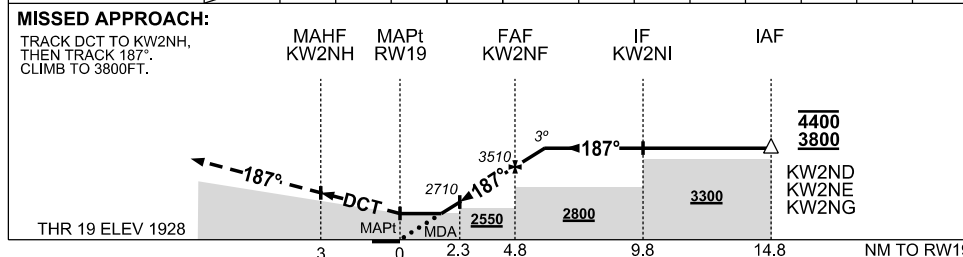
USE QNH

RNP RWY 19
KARLAWINDA MINE, WA (YKWA)



| RNP APCH | | | | |
|---|------|------|---------|---------|
| HOLDING NOT APPLICABLE | | | | |
| TR IN | TURN | TIME | MIN ALT | DME LMT |
| * NO CIRCLING | | | | |
| AD ELEV 1928 | | | | |
| Bearings are Magnetic Elevations in FEET AMSL | | | | |

| NM TO NEXT WPT | RW19 | 1.5 | 2 | 3 | 4 | KW2NF | 0.9 | | | | |
|--------------------|------|------|------|------|------|-------|------|--|--|--|--|
| ALT (3° APCH PATH) | | 2470 | 2610 | 2930 | 3250 | 3510 | 3800 | | | | |



NOTES

1. MAX IAS: INITIAL: 210KT
- *2. NO CIRCLING WEST OF RWY 01/19
3. CAUTION: PROC OVERLAID BY PROCS AT YNNW. PRESCRIBED MAXIMUM ALTITUDES ENSURE SEPARATION
3. CAUTION: BLASTING REFER ERSA

| CATEGORY | A | B | C | D |
|------------|------------------|---|---------------|----------------|
| LNAV | 2470 (542 - 3.1) | | | NOT AUTHORISED |
| * CIRCLING | 2550 (622-2.4) | | 2690(762-4.0) | |
| ALTERNATE | (1122-4.4) | | (1262-6.0) | |

Changes: CHART TITLE, PBN SPECIFICATION BOX, EDITORIAL

KWAGN02-177