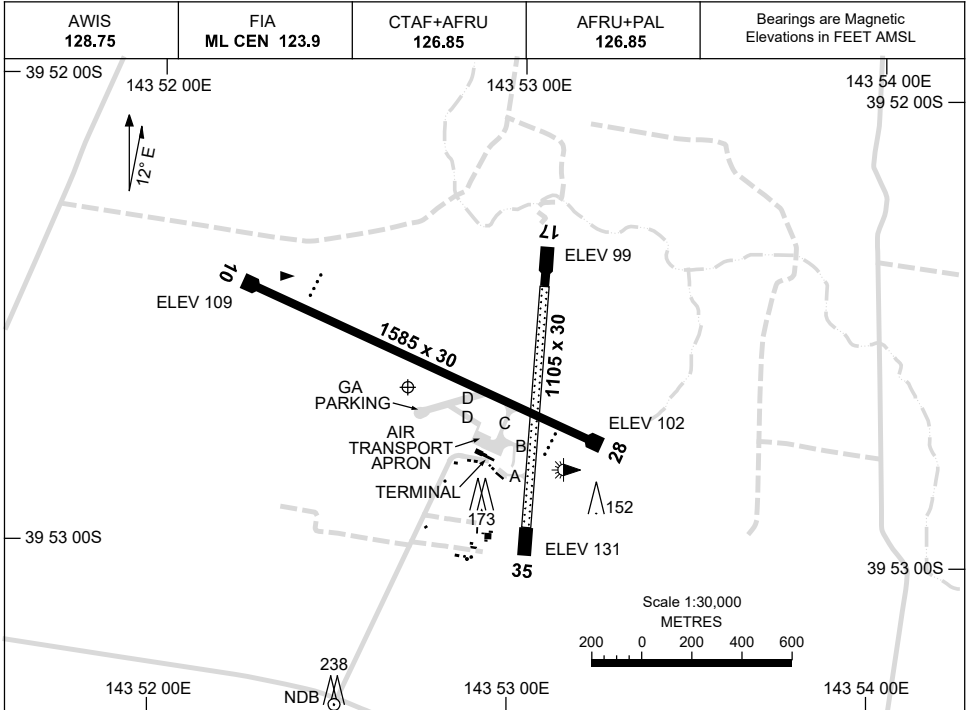


13 JUN 2024

AD ELEV 132
39 52 39S 143 52 42E

AERODROME CHART
KING ISLAND, TAS (YKII)



AERODROME LIGHTING	
RWY	TAXIWAY : BLUE EDGE ON RWY 10/28 TURN PADS RL : AFRU+PAL 126.85 , SDBY (15 SEC), PTBL IN MED EMERG WITH 60 MIN PN TO ARO RQ (ARO : 03 6462 9000)
10 ¹⁰³	PAPI 3.0° 41FT LIRL
²⁸³ 28	PAPI 3.0° 41FT LIRL
17 ¹⁷²	PTBL
³⁵² 35	PTBL

NOTES

- VHF TRANSMISSIONS FROM TAXI ACFT MAY BE SUBJECT TO GROUND SHIELDING.
- AWIS RQ 1 SEC PULSE TO ACTIVATE.

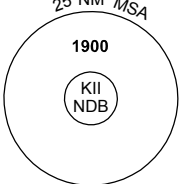
Changes: PAPI ADDED, Editorial.

KIAD01-179

GNSS ARRIVAL PROCEDURES KING ISLAND, TAS (YKII)


9 SEP 2021

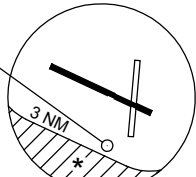
AWIS 128.75	FIA ML CEN 123.9	CTAF+AFRU 126.85	AFRU+PAL 126.85		Bearings are Magnetic. Elevations in FEET AMSL
----------------	---------------------	---------------------	--------------------	--	---



25 NM MSA
1900
KII NDB

REFERENCE WAYPOINT KII NDB





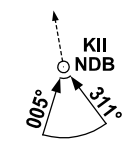
3 NM

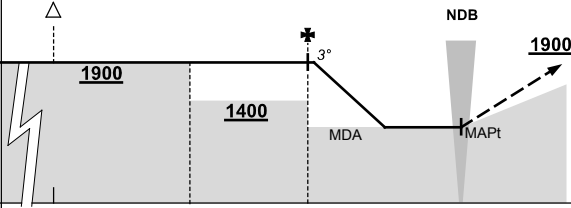
* NO CIRCLING BEYOND 3NM SOUTH OF RWY 10/28.

10 NM MSA 1900

AD ELEV 132

SECTOR A



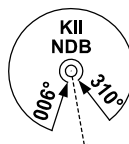


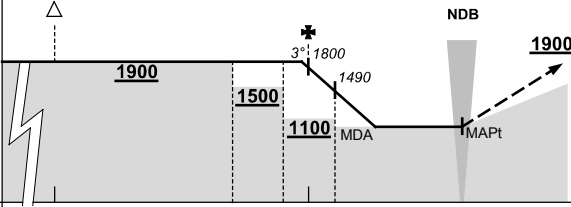
NDB

MISSED APPROACH:
CLIMB ON TRACK TO 1900FT.

NM TO KII NDB	25	16	10	6	0												
CIRCLING MINIMA	A,B: 1100-2.4				C: 1100-4.0		D: N/A										
NM TO KII NDB	5.9	5	4	3.4													
ALT (3° APCH PATH)	1900	1620	1300	1100													

SECTOR B





NDB

MISSED APPROACH:
CLIMB ON TRACK TO 1900FT.

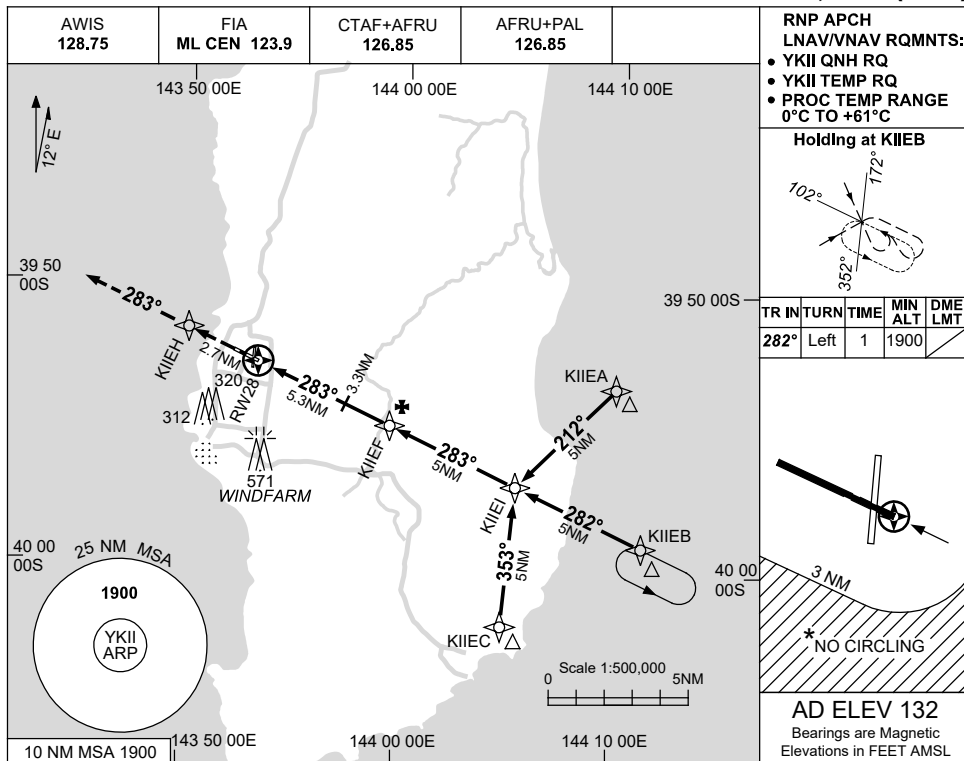
NM TO KII NDB	25	16	9	7	6	5	0										
CIRCLING MINIMA	A,B: 980-2.4				C: 980-4.0		D: N/A										
NM TO KII NDB	6.3	5	4	3.4													
ALT (3° APCH PATH)	1900	1490	1170	980													

USE QNH

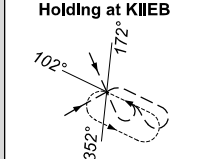
RNP RWY 28

KING ISLAND, TAS (YKII)

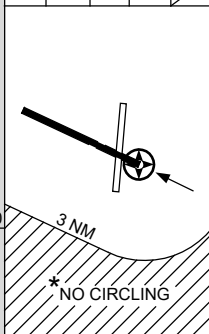
15 JUN 2023



RNP APCH
LNAV/VNAV RQMTS:
 • YKII QNH RQ
 • YKII TEMP RQ
 • PROC TEMP RANGE
 0°C TO +61°C

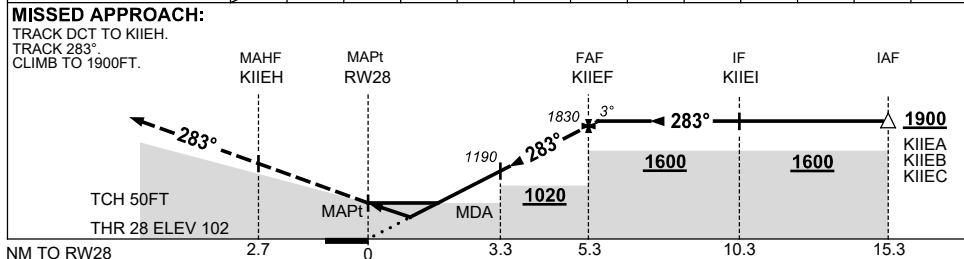


TR	INTURN	TIME	MIN ALT	DME LMT
282°	Left	1	1900	



AD ELEV 132
 Bearings are Magnetic
 Elevations in FEET AMSL

NM TO NEXT WPT	RW28	1.2	1.8	2	3	4	KIIEF	0.2				
ALT (3° APCH PATH)		530	730	790	1110	1430	1830	1900				



NOTES

CATEGORY	A	B	C	D
LNAV/VNAV	530 (428-2.4)			NOT APPLICABLE
LNAV	730 (628-3.6)			
CIRCLING *	840 (708-2.4)		940 (808-4.0)	
ALTERNATE	(1208-4.4)		(1308-6.0)	

- MAX IAS: INITIAL : 210KT
- * 2. NO CIRCLING BEYOND 3NM SOUTH OF RWY 10/28.

Changes: CHART TITLE, PBN SPECIFICATION BOX, Editorial.

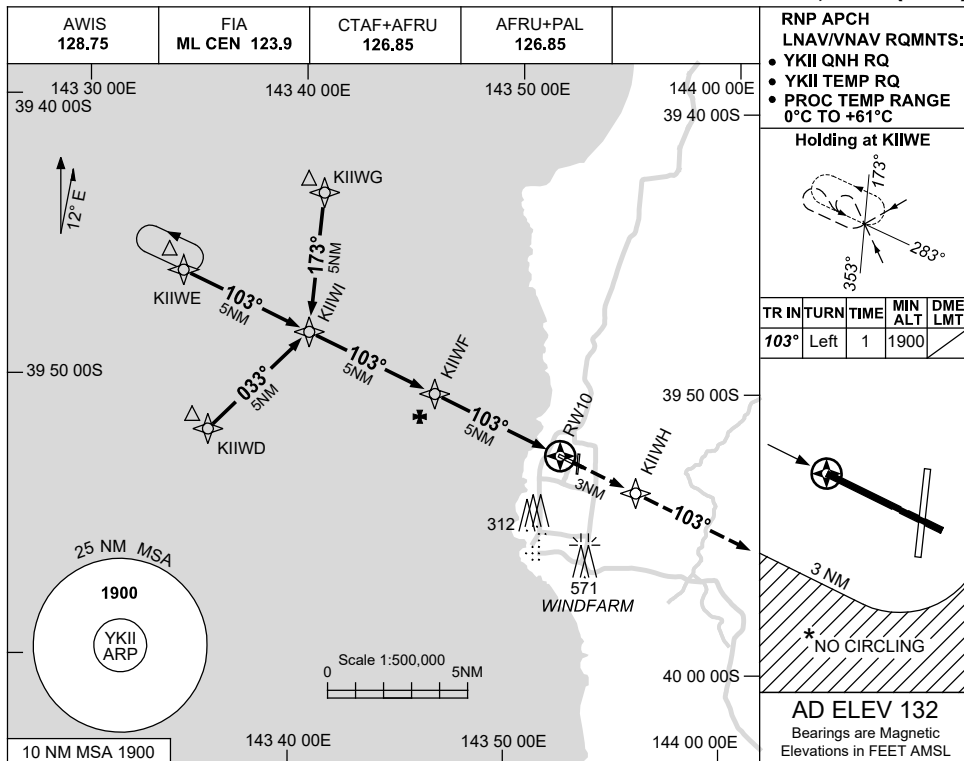
KIIGN01-175

USE QNH

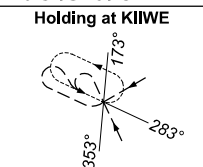
RNP RWY 10

KING ISLAND, TAS (YKII)

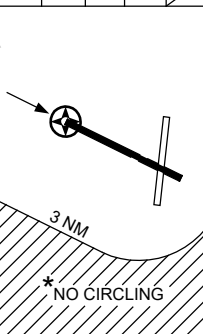
15 JUN 2023



RNP APCH
LNAV/VNAV RQMTS:
• YKII QNH RQ
• YKII TEMP RQ
• PROC TEMP RANGE
0°C TO +61°C

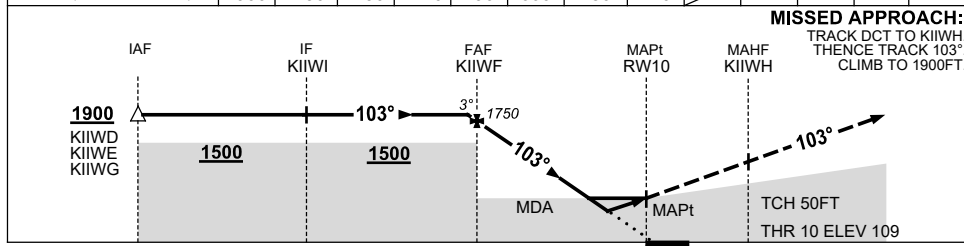


TR IN	TURN	TIME	MIN ALT	DME LMT
103°	Left	1	1900	



AD ELEV 132
Bearings are Magnetic
Elevations in FEET AMSL

NM TO NEXT WPT	0.5	KIIWF	4	3	2	1.6	1	0.9	RW10			
ALT (3° APCH PATH)	1900	1750	1430	1110	790	660	480	440				



MISSED APPROACH:
TRACK DCT TO KIIWH.
THENCE TRACK 103°. CLIMB TO 1900FT.

NOTES

CATEGORY	A	B	C	D
LNAV/VNAV	440 (331-1.8)			NOT APPLICABLE
LNAV	660 (551-3.1)			
CIRCLING *	840 (708-2.4)		940 (808-4.0)	
ALTERNATE	(1208-4.4)		(1308-6.0)	

- MAX IAS: INITIAL : 210KT.
- * NO CIRCLING BEYOND 3NM SOUTH OF RWY 10/28.

Changes: CHART TITLE, PBN SPECIFICATION BOX, Editorial.

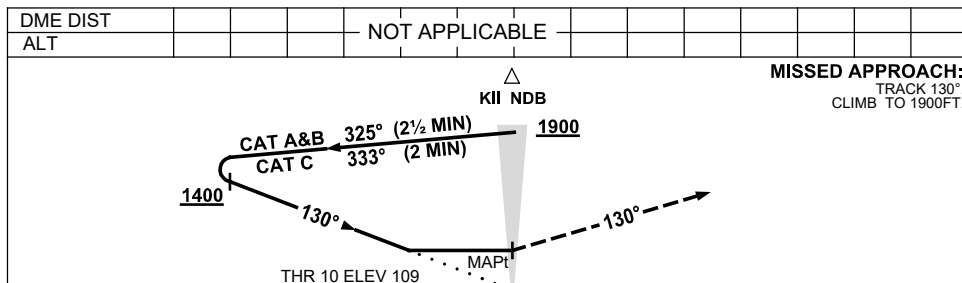
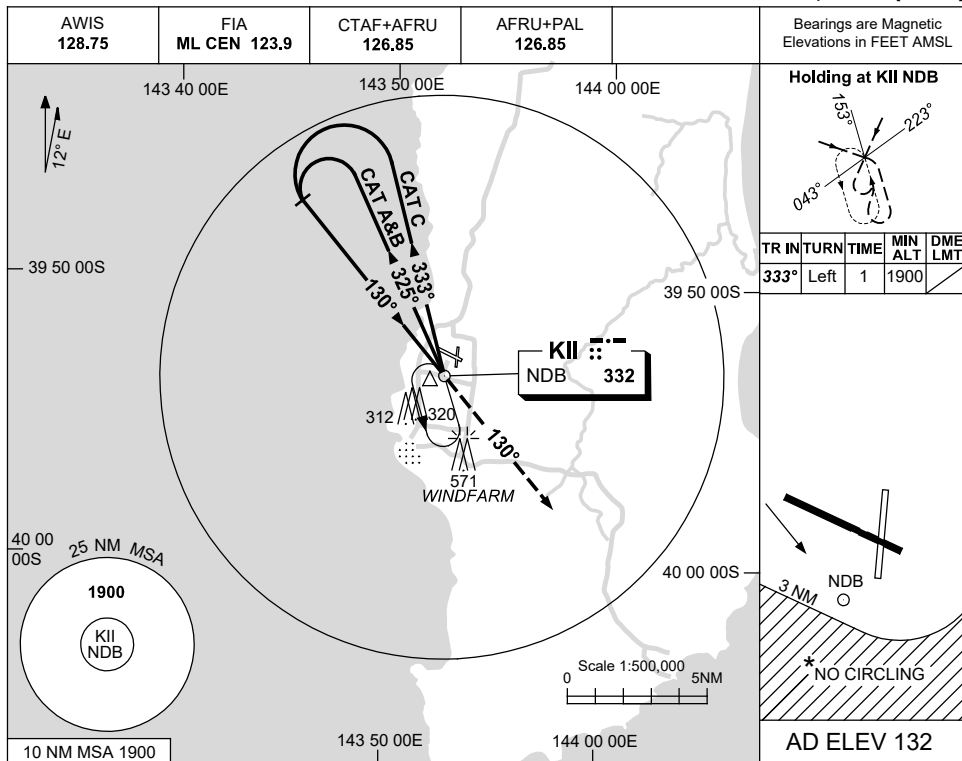
KIIGN02-175

USE QNH

NDB RWY 10

9 SEP 2021

KING ISLAND, TAS (YKII)



NOTES

CATEGORY	A	B	C	D
S-I NDB	710 (601-3.4)		CIRCLING ONLY	NOT APPLICABLE
CIRCLING*	840 (708-2.4)			
ALTERNATE	(1208-4.4)		940 (808-4.0) (1308-6.0)	

1. MAX IAS:
INITIAL : 210KT.
- * 2. NO CIRCLING
BEYOND 3NM
SOUTH OF RWY
10/28.

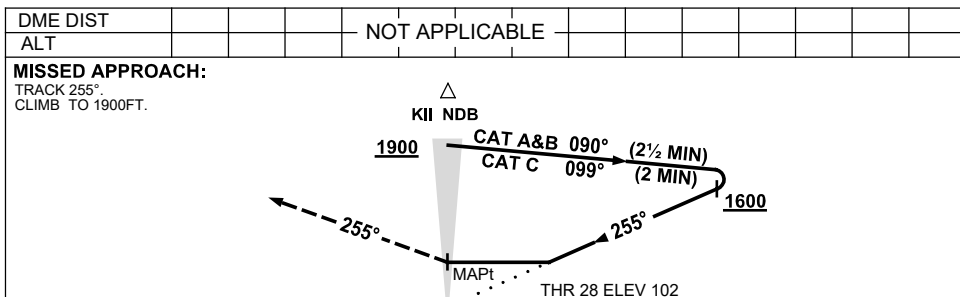
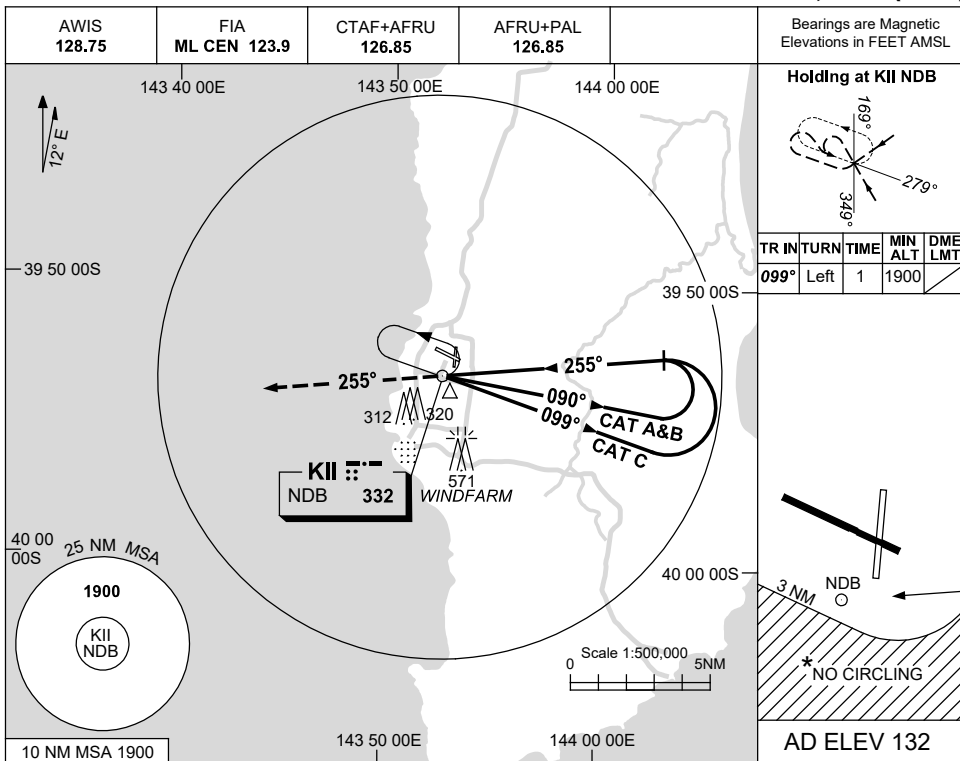
Changes: MSA, HOLDING ALT, IAF ALT, MISSED APCH ALT, COORD FORMAT, THR ELEV, Editorial.

KIINB01-168

USE QNH

NDB RWY 28
KING ISLAND, TAS (YKII)

9 SEP 2021



NOTES

CATEGORY	A	B	C	D
S-I NDB	840 (738-4.2)		CIRCLING ONLY	NOT APPLICABLE
CIRCLING *	840 (708-2.4)		940 (808-4.0)	
ALTERNATE	(1208-4.4)		(1308-6.0)	

1. MAX IAS: INITIAL : 210KT.
- * 2. NO CIRCLING BEYOND 3NM SOUTH OF RWY 10/28.

Changes: MSA, HOLDING ALT, IAF ALT, MISSED APCH ALT, COORD FORMAT, THR ELEV, Editorial.

KIINB02-168