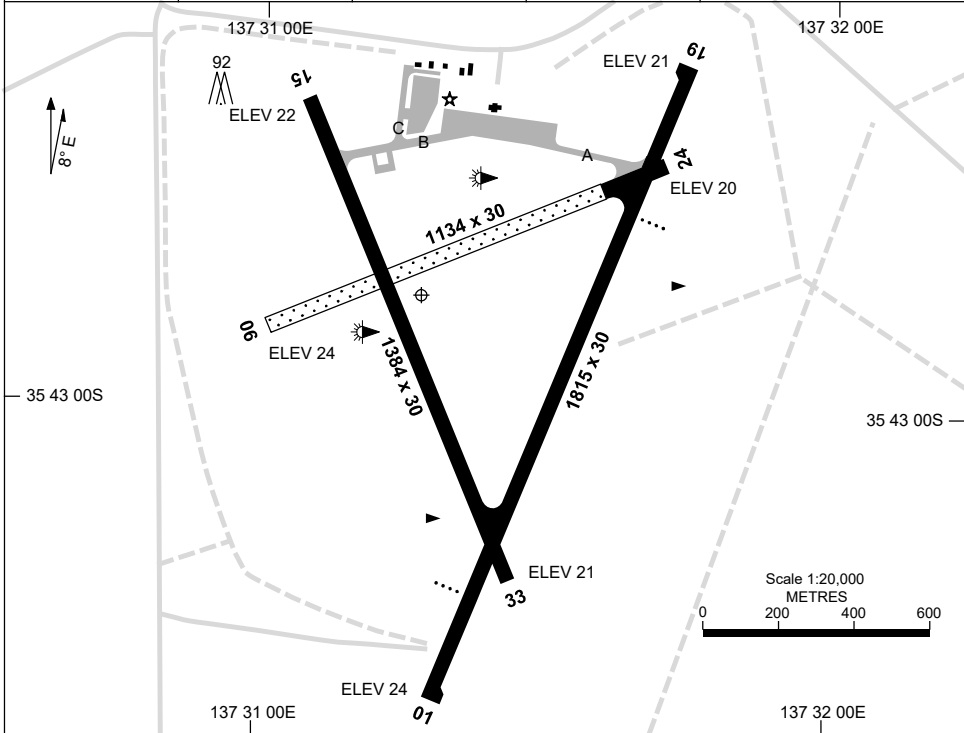


28 NOV 2024

AD ELEV 24
35 42 50S 137 31 17E

KINGSCOTE/KANGAROO ISLAND, SA (YKSC)
AERODROME CHART

AWIS 127.45	FIA ML CEN 123.05	CTAF+AFRU 126.0	PAL 122.3	Bearings are Magnetic Elevations in FEET AMSL
----------------	----------------------	--------------------	--------------	--



		AERODROME LIGHTING	
RWY		ABN : FLG W 6 SEC	TAXIWAYS : BLUE EDGE TWY A
		RL : PAL 122.3 , SDBY (15 SEC) , PTBL IN EMERG	
01 194	⁰¹⁴ 19	PAPI 3.0° 47FT LIRL	PAPI 3.0° 47FT LIRL
06 239	⁰⁵⁹ 24	NIL	NIL
15 329	¹⁴⁹ 33	NIL	NIL

NOTES

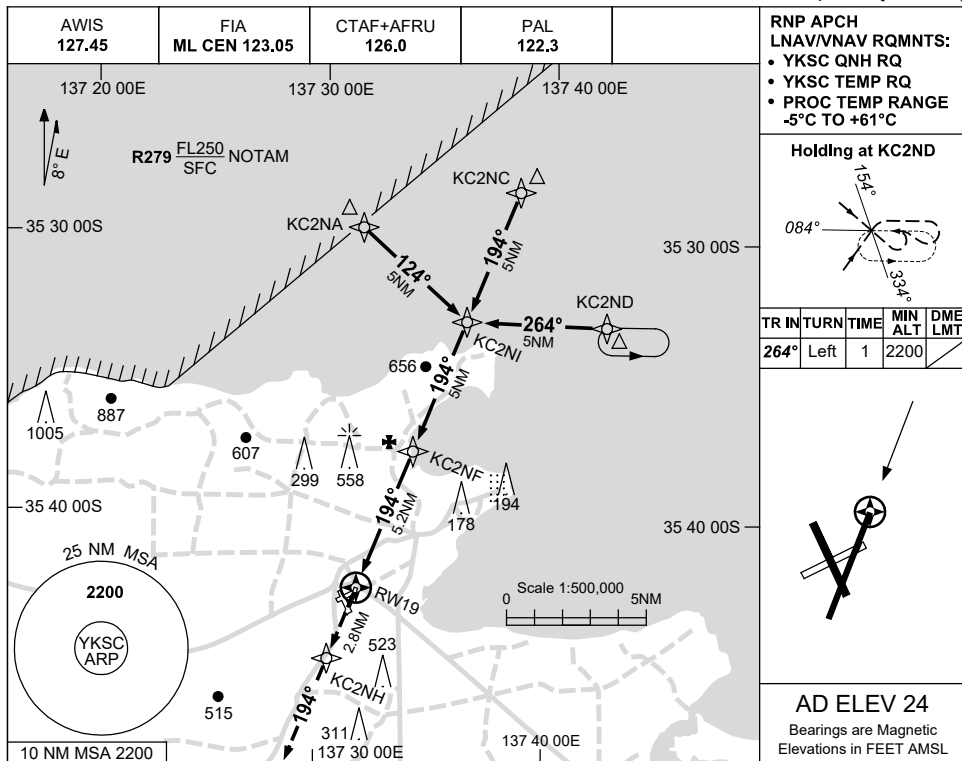
Changes: SDBY SWITCHOVER TIME.

KSCAD01-181

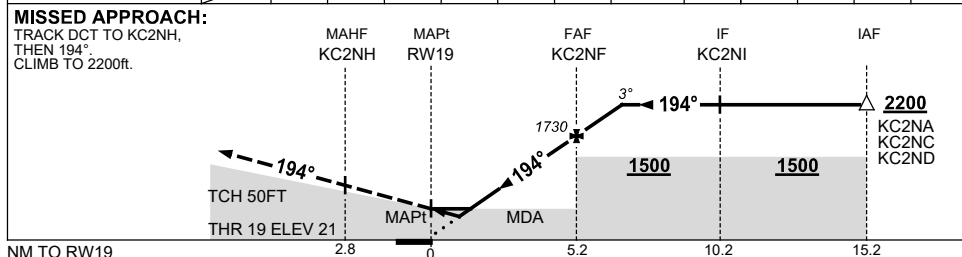
USE QNH
KINGSCOTE/KANGAROO ISLAND, SA (YKSC)

RNP RWY 19

5 SEP 2024



NM TO NEXT WPT	RW19	0.8	1	1.7	2	3	4	KC2NF	1	1.5		
ALT (3° APCH PATH)		340	390	600	710	1030	1340	1730	2050	2200		



NOTES

CATEGORY	A	B	C	D
LNAV/VNAV	340 (319-1.8)			NOT APPLICABLE
LNAV	600 (576-3.3)			
CIRCLING	840 (816-2.4)		1070 (1046-4.0)	
ALTERNATE	(1316-4.4)		(1546-6.0)	

- MAX IAS:
INITIAL : 230KT.
- KC2NA INITIAL
NOT AVBL
WHEN R279 ACT

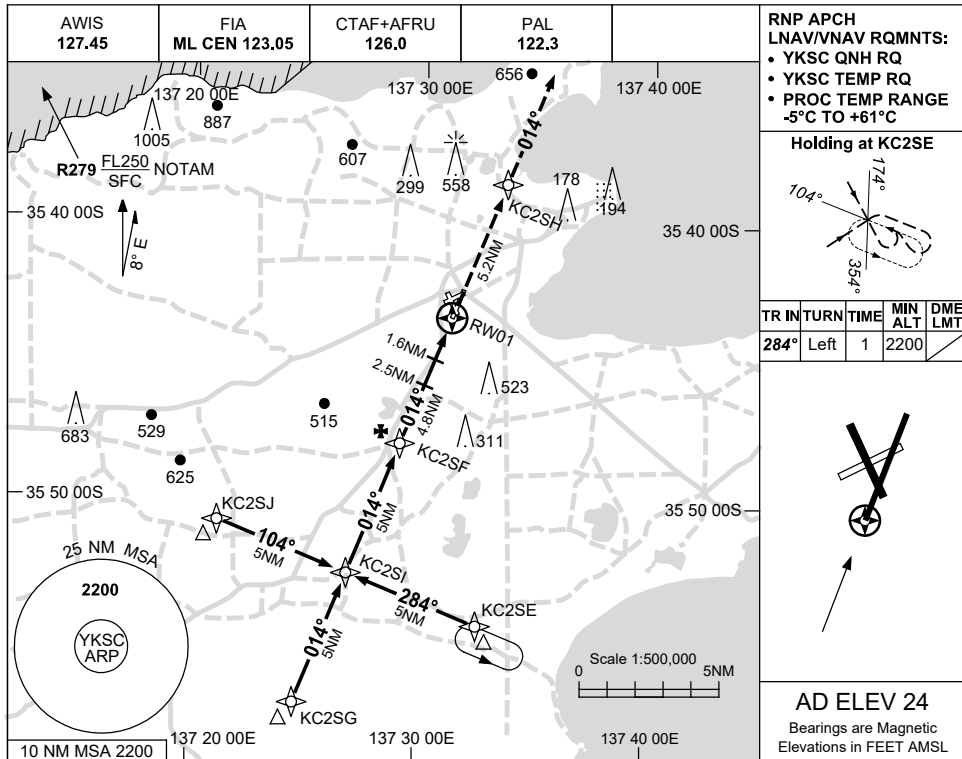
Changes: WPT NAMING CONVENTION, Editorial.

KSCGN01-180

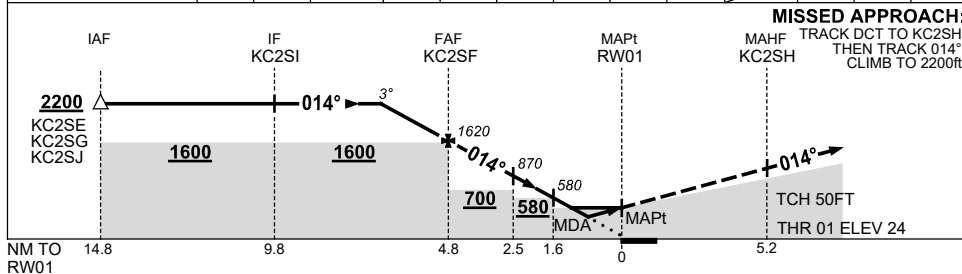
USE QNH
KINGSCOTE/KANGAROO ISLAND, SA (YKSC)

RNP RWY 01

5 SEP 2024



NM TO NEXT WPT	1.9	1	KC2SF	4	3	2.5	1.6	1.4	0.8	RW01			
ALT (3° APCH PATH)	2200	1930	1620	1350	1030	870	580	530	340				



NOTES

- MAX IAS: INITIAL : 210KT.

CATEGORY	A	B	C	D
LNAV/VNAV		340 (316-1.8)		NOT APPLICABLE
LNAV		530 (506-2.9)		
CIRCLING	840 (816-2.4)		1070 (1046-4.0)	
ALTERNATE		(1316-4.4)	(1546-6.0)	

Changes: 2.5NM STEP-DOWN FIX, WPT NAMING CONVENTION, Editorial.

KSCGN02-180