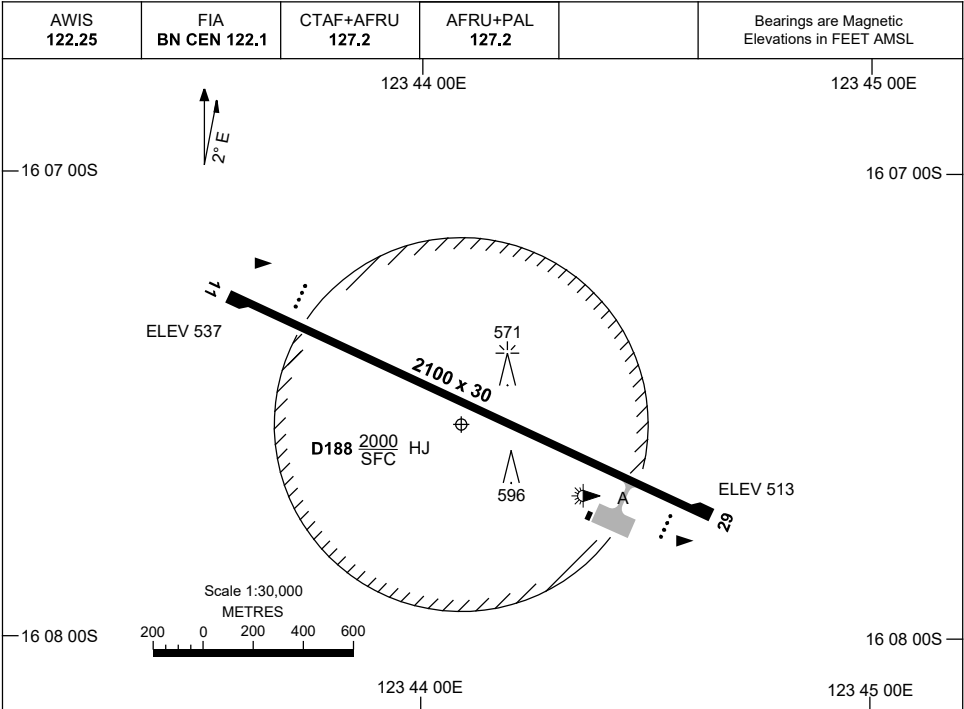


7 SEP 2023

AD ELEV 540
16 07 33S 123 44 05E

AERODROME CHART
KOOLAN ISLAND/
KOOLAN CENTRAL, WA (YKLC)



	AERODROME LIGHTING
RWY	TAXIWAY : BLUE EDGE RL : AFRU+PAL 127.2. SDBY (8 SEC)
11 <small>113</small>	PAPI 3.0° 53FT LIRL
<small>293</small> 29	PAPI 3.0° 53FT LIRL

NOTES

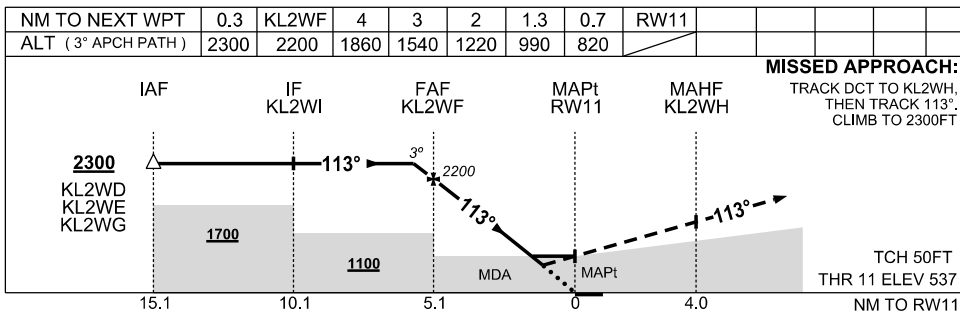
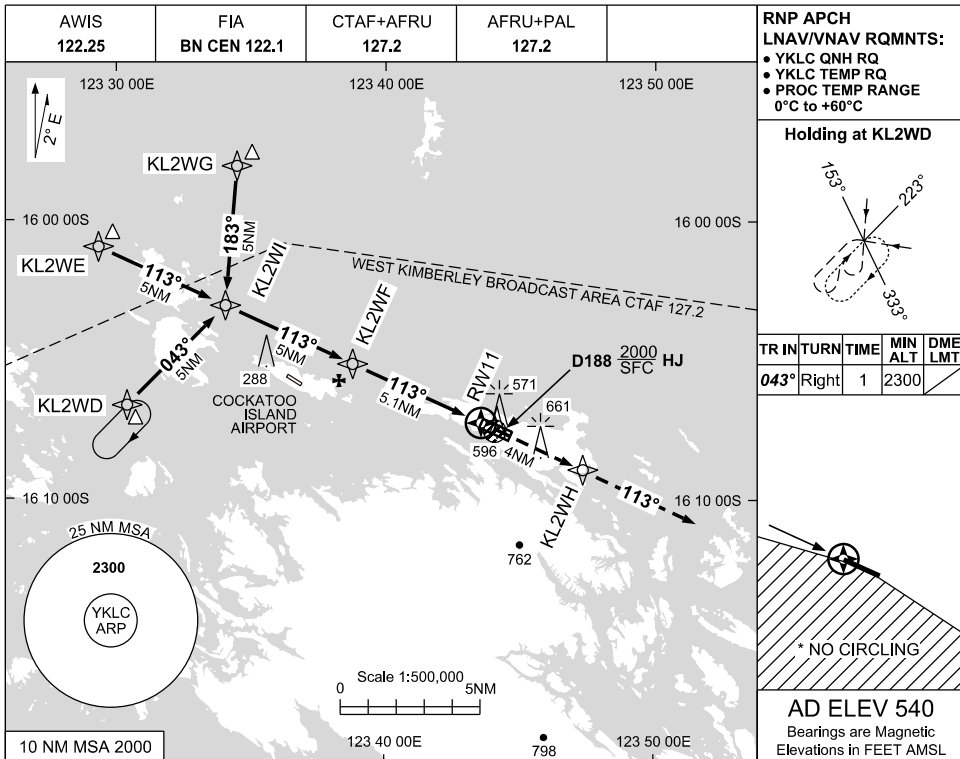
Changes: NOTES REMOVED.

KLCAD01-176

USE QNH

RNP RWY 11
KOOLAN ISLAND/
KOOLAN CENTRAL, WA (YKLC)

7 SEP 2023



CATEGORY	A	B	C	D
LNAV/VNAV		820 (283-1.6)		
LNAV		990 (450-2.5)		
* CIRCLING	1140 (600-2.4)	1240(700-4.0)	1330(790-5.0)	
ALTERNATE	(1100-4.4)	(1200-6.0)	(1290-7.0)	

1. MAX IAS:
INITIAL : 210KT

2. NO CIRCLING
S OF RWY 11/29

3. CAUTION: HIGH DENSITY VFR OPS REFER ERSA GEN SP-12

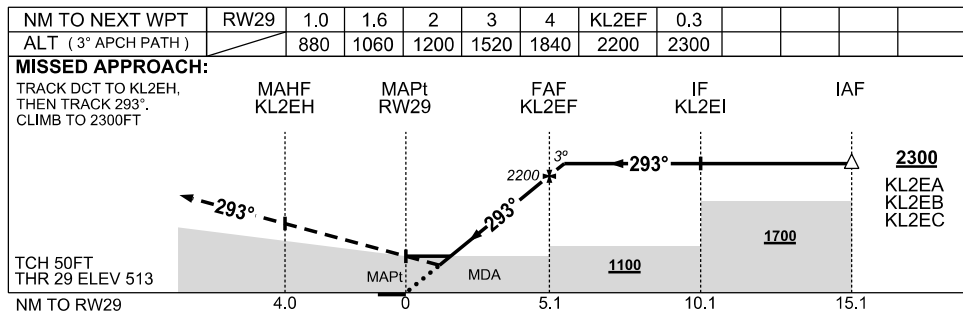
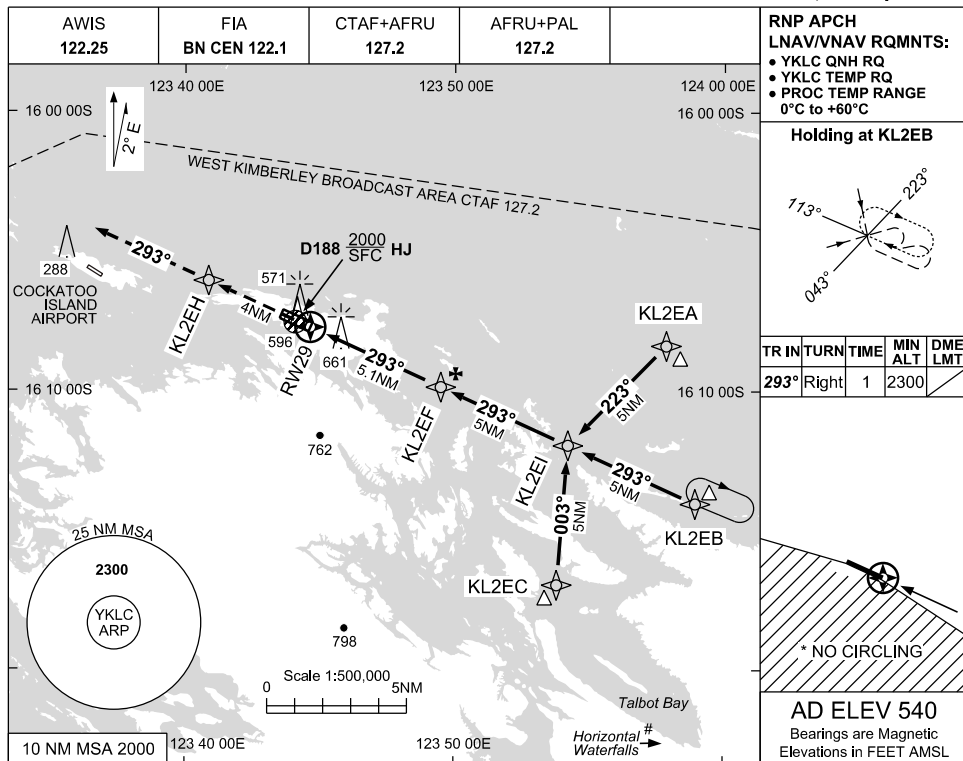
Changes: YKLI Removed, WPT IDENT, EDITORIAL

KLCGN01-176

USE QNH

RNP RWY 29
**KOOLAN ISLAND/
 KOOLAN CENTRAL, WA (YKLC)**

7 SEP 2023



- NOTES**
1. MAX IAS:
 INITIAL : 210KT
 - *2. NO CIRCLING
 S OF RWY 11/29
 - #3. CAUTION: HIGH DENSITY VFR OPS REFER ERSA GEN SP-12

CATEGORY	A	B	C	D
LNAV/VNAV	880 (367-2.0)			
LNAV	1060 (547-3.1)			
* CIRCLING	1140 (600-2.4)	1240(700-4.0)	1330(790-5.0)	
ALTERNATE	(1100-4.4)	(1200-6.0)	(1290-7.0)	

Changes: YKLI Removed, WPT IDENT, EDITORIAL

KLCCG02-176