

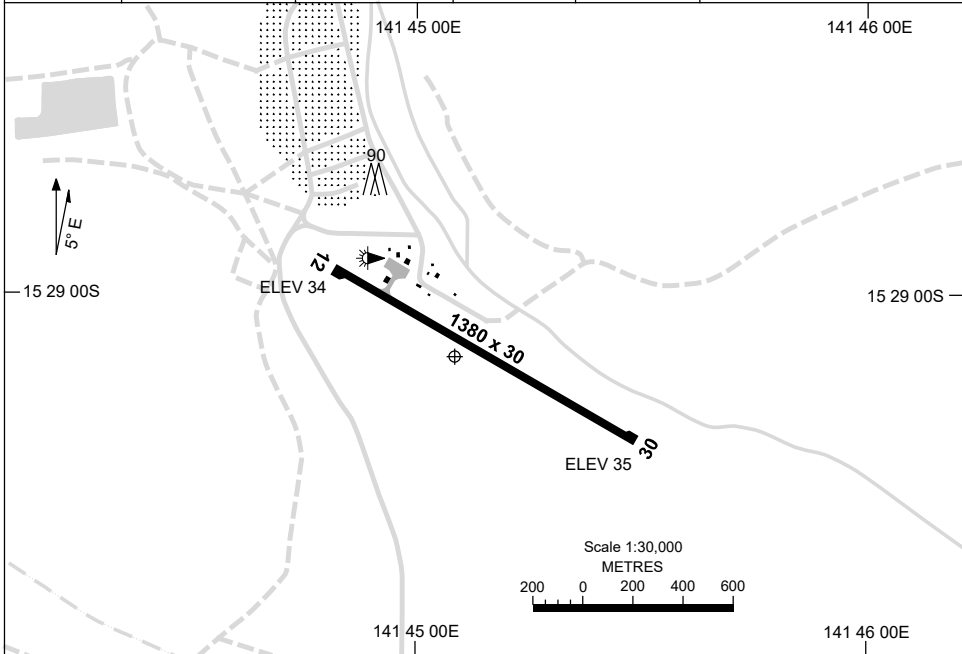
28 NOV 2024

AD ELEV 35

15 29 08S 141 45 05E

**AERODROME CHART**  
**KOWANYAMA, QLD (YKOW)**

AWIS 128.25	FIA BN CEN 118.2	CTAF+AFRU 126.7	UNICOM 126.7	AFRU+PAL 126.7	Bearings are Magnetic Elevations in FEET AMSL
----------------	---------------------	--------------------	-----------------	-------------------	--



<b>RWY</b>	<b>AERODROME LIGHTING</b>
	TAXIWAY : BLUE EDGE RL : AFRU+PAL 126.7 , SDBY (15 SEC)
<b>12</b> <sup>114</sup> 294 <b>30</b>	LIRL LIRL

**NOTES**

1. FIA FREQ 118.2 AVBL 9,500FT.

Changes: PTBL LIGHTING REMOVED, Editorial.

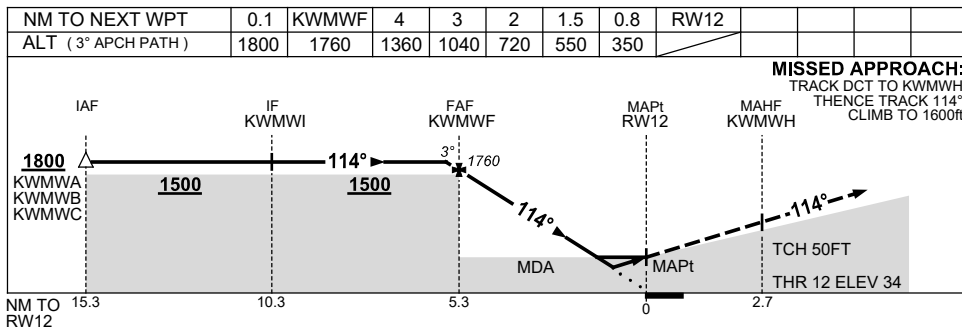
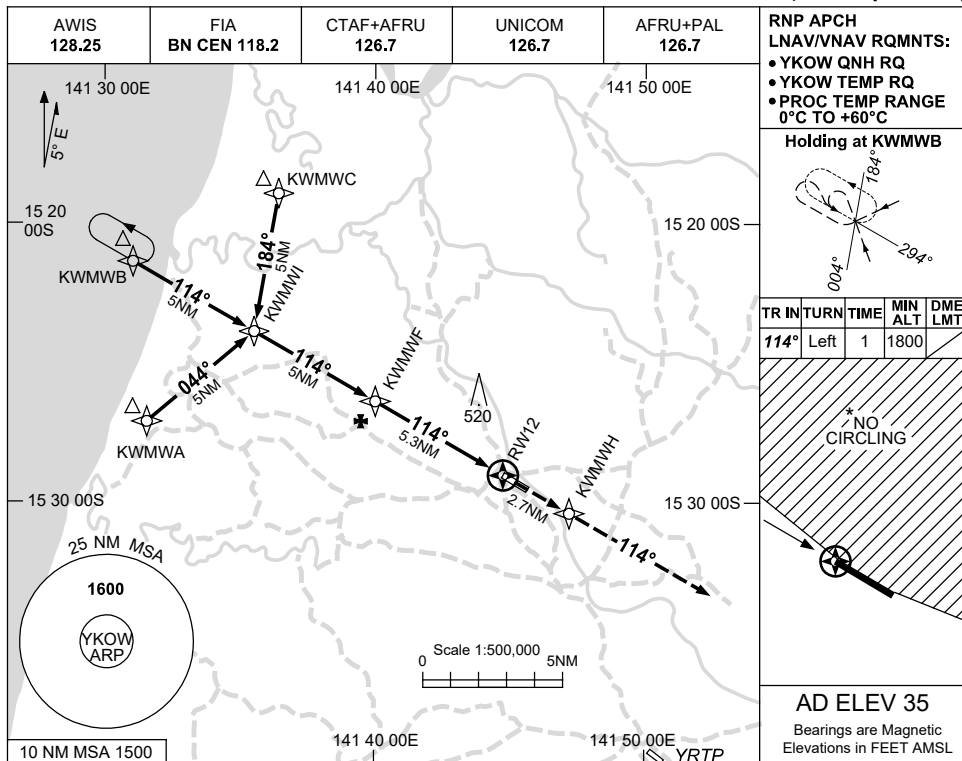
KOWAD01-181

USE QNH

RNP RWY 12

5 SEP 2024

KOWANYAMA, QLD (YKOW)



CATEGORY	A	B	C	D
LNAV/VNAV	350 (316-1.8)			<b>NOT APPLICABLE</b>
LNAV	550 (515-2.9)			
CIRCLING*	630 (595-2.4)	730 (695-4.0)		
ALTERNATE	(1095-4.4)		(1195-6.0)	

**NOTES**  
 1. MAX IAS: INITIAL : 210KT.  
 \* 2. NO CIRCLING NORTH OF RWY 12 & RWY 30.

Changes: CTAF+AFRU, Editorial.

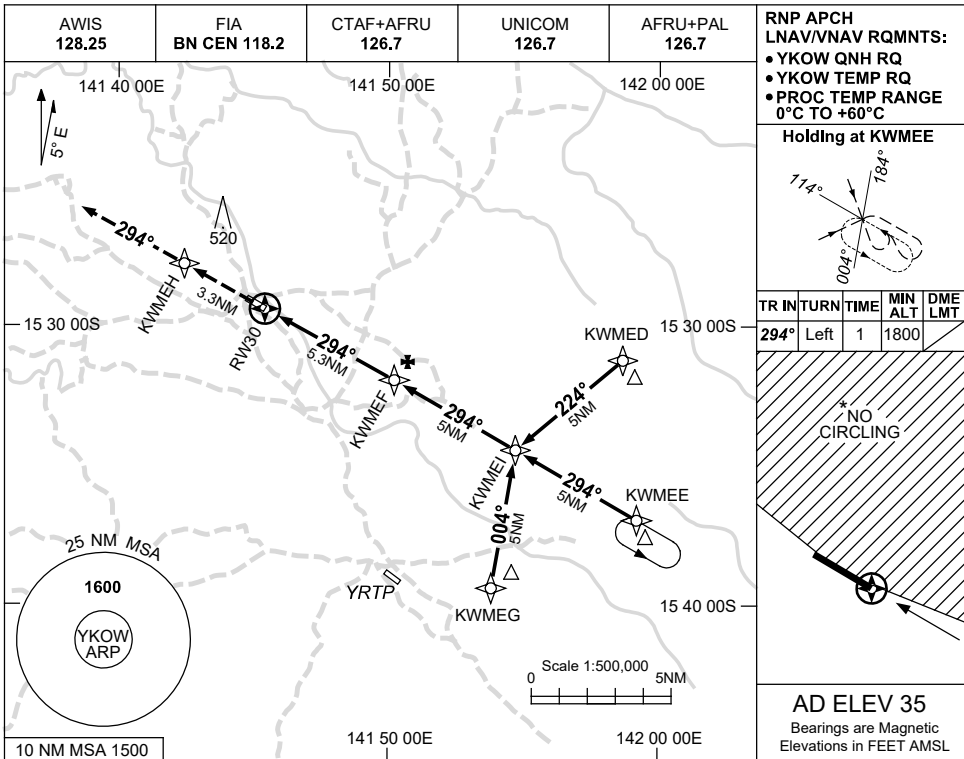
KOWGN01-180

USE QNH

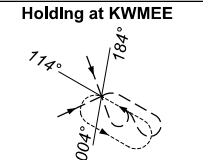
RNP RWY 30

**KOWANYAMA, QLD (YKOW)**

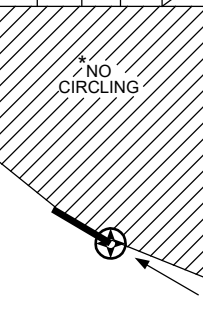
5 SEP 2024



RNP APCH  
LNAV/VNAV RQMTS:  
• YKOW QNH RQ  
• YKOW TEMP RQ  
• PROC TEMP RANGE  
0°C TO +60°C

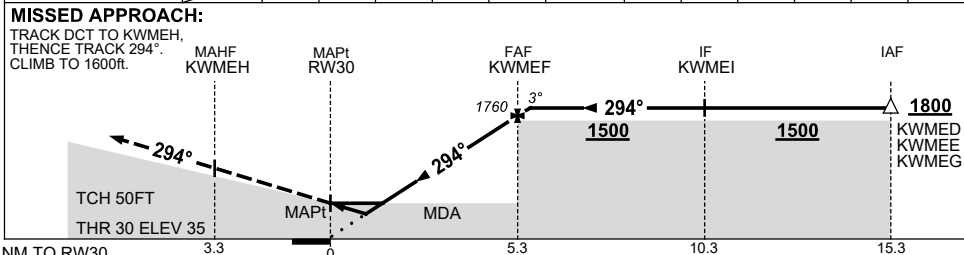


TR	INTURN	TIME	MIN ALT	DME LMT
294°	Left	1	1800	



**AD ELEV 35**  
Bearings are Magnetic  
Elevations in FEET AMSL

NM TO NEXT WPT	RW30	0.8	1.5	2	3	4	KWMEF	0.1				
ALT (3° APCH PATH)		350	550	720	1040	1360	1760	1800				



**NOTES**

CATEGORY	A	B	C	D
LNAV/VNAV		<b>350</b> (315-1.8)		NOT APPLICABLE
LNAV		<b>550</b> (515-2.9)		
CIRCLING*	<b>630</b> (595-2.4)		<b>730</b> (695-4.0)	
ALTERNATE	(1095-4.4)		(1195-6.0)	

- MAX IAS: INITIAL : 210KT.
- \* NO CIRCLING NORTH OF RWY 12 & RWY 30.

Changes: CTAF+AFRU, Editorial.

KOWGN02-180