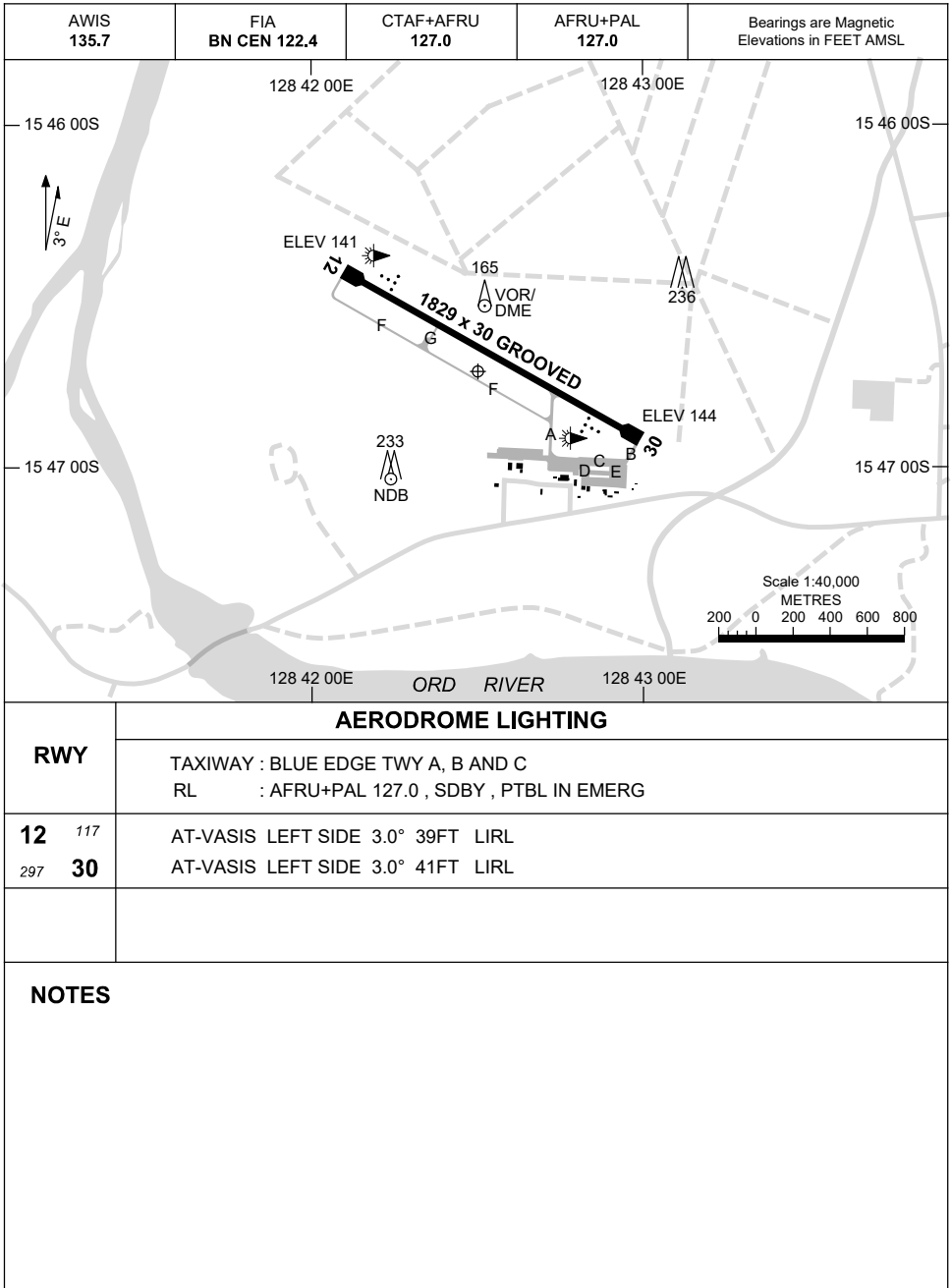


13 JUN 2024

AD ELEV 145
15 46 41S 128 42 27E

AERODROME CHART
KUNUNURRA, WA (YPKU)



AERODROME LIGHTING

RWY

TAXIWAY : BLUE EDGE TWY A, B AND C
RL : AFRU+PAL 127.0 , SDBY , PTBL IN EMERG

12 ¹¹⁷
₂₉₇ **30**

AT-VASIS LEFT SIDE 3.0° 39FT LIRL
AT-VASIS LEFT SIDE 3.0° 41FT LIRL

NOTES

Changes: TWY LIGHTING, Editorial.

PKUAD01-179

DME or GNSS ARRIVAL PROCEDURES KUNUNURRA, WA (YPKU) Page 1

27 FEB 2020

AWIS 135.7	FIA BN CEN 122.4	CTAF+AFRU 127.0	AFRU+PAL 127.0		Bearings are Magnetic Elevations in FEET AMSL
---------------	---------------------	--------------------	-------------------	--	--

25 NM MSA

2600

3100

10 NM MSA 2600

**DME USING KU DME
REFERENCE WAYPOINT KU VOR**

KU VOR/DME 116.5

KU NDB 221

NO CIRCLING

* NO CIRCLING SOUTH OF RWY 12/30

AD ELEV 145

JULUP TO KU

2600

2100

KU NDB or VOR

VOR or NDB

2600

2100

MDA

MAPt

3100

3°

MISSED APPROACH:

CLIMB ON TRACK TO 3100FT.

NM TO KU VOR	25	15	12	7	0														
CIRCLING MINIMA	A,B: 1260-2.4			C: 1350-4.0		D: N/A													
NM TO KU VOR	6.9	6	5	4	3	2.7													
ALT (3° APCH PATH)	2600	2310	1990	1670	1350	1260													

MAMUT TO KU

3400

3100

KU NDB or VOR

VOR or NDB

3100

2500

2820

2500

MDA

MAPt

3100

3°

MISSED APPROACH:

CLIMB ON TRACK TO 3100FT.

NM TO KU VOR	25	15	10	7	6	0													
CIRCLING MINIMA	A,B: 1720-2.4			C: 1720-4.0		D: N/A													
NM TO KU VOR	7.9	7	6	5	4	3.6													
ALT (3° APCH PATH)	3100	2820	2500	2180	1860	1720													

EGUMI TO KU

2800

2600

KU NDB or VOR

VOR or NDB

2600

1900

2220

1900

MDA

MAPt

3100

3°

MISSED APPROACH:

CLIMB ON TRACK TO 3100FT.

NM TO KU VOR	25	15	8	5	4	0													
CIRCLING MINIMA	A,B: 1570-2.4			C: 1570-4.0		D: N/A													
NM TO KU VOR	6.2	5	4	3															
ALT (3° APCH PATH)	2600	2220	1900	1570															

Changes: Editorial.

PKUDG01-162

DME or GNSS ARRIVAL PROCEDURES KUNUNURRA, WA (YPKU) Page 2

27 FEB 2020

AWIS 135.7	FIA BN CEN 122.4	CTAF+AFRU 127.0	AFRU+PAL 127.0		Bearings are Magnetic Elevations in FEET AMSL
---------------	---------------------	--------------------	-------------------	--	--

25 NM MSA

2600

3100

10 NM MSA 2600

**DME USING KU DME
REFERENCE WAYPOINT KU VOR**

KU
VOR/DME 116.5

KU
NDB 221

* NO CIRCLING SOUTH
OF RWY 12/30

NO
CIRCLING

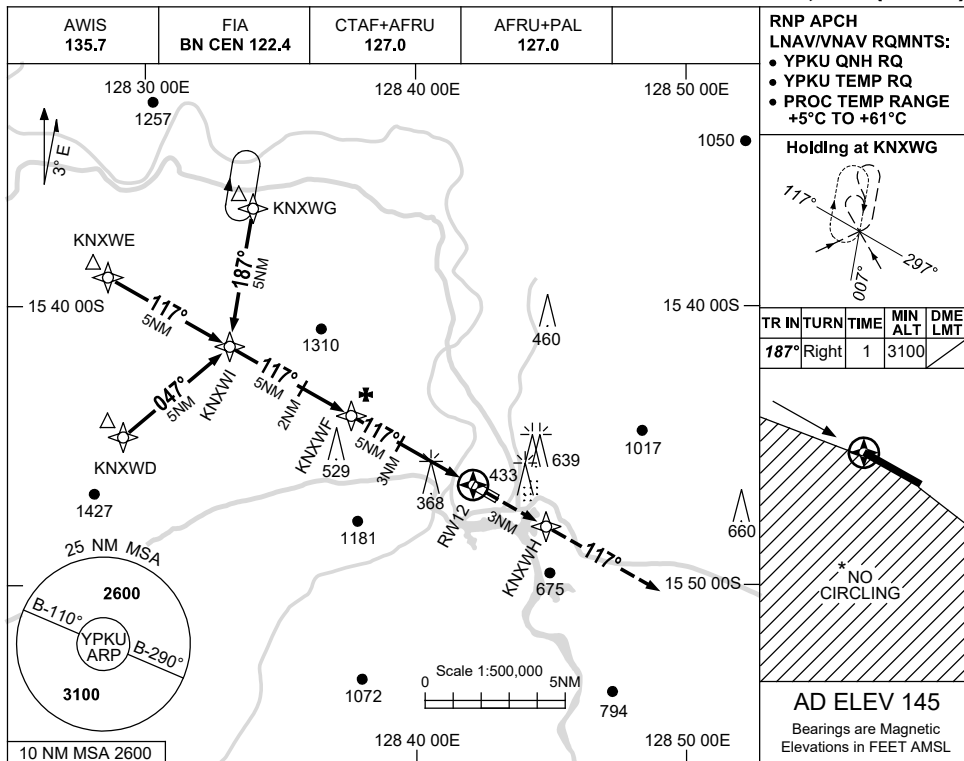
AD ELEV 145

<p>ALL OTHER ROUTES TO KU NDB or VOR</p>	<p style="text-align: center; font-size: small;">VOR or NDB</p>	<p>MISSED APPROACH: CLIMB ON TRACK TO 3100FT.</p>
NM TO KU VOR	25 15 10 5 4 2 0	
CIRCLING MINIMA	A,B: 1850-2.4 C: 1850-4.0 D: N/A	
NM TO KU VOR	5.5 5 4 3 2 1.5	
ALT (3° APCH PATH)	3100 2960 2640 2320 2000 1850	

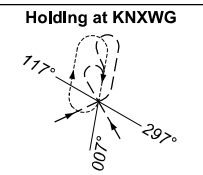
USE QNH

RNP RWY 12
KUNUNURRA, WA (YPKU)

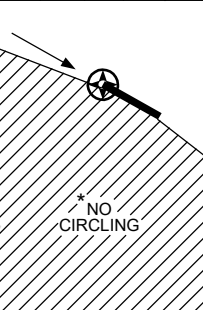
8 SEP 2022



RNP APCH
LNAV/VNAV RQMNTS:
• YPKU QNH RQ
• YPKU TEMP RQ
• PROC TEMP RANGE
+5°C TO +61°C

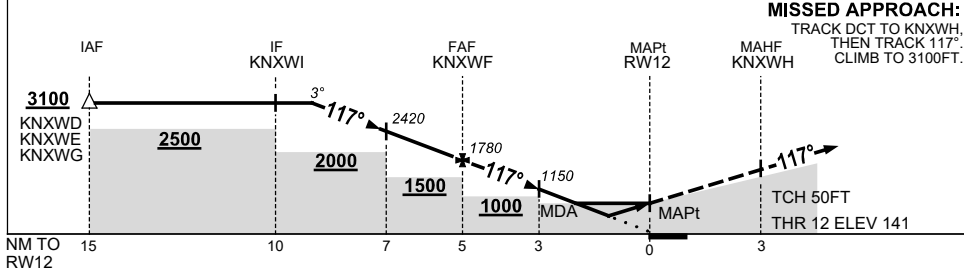


TR	INTURN	TIME	MIN ALT	DME LMT
187°	Right	1	3100	



AD ELEV 145
Bearings are Magnetic
Elevations in FEET AMSL

NM TO NEXT WPT	4.1	3	2	1	KNXWF	4	3	1.8	1.2	RW12		
ALT (3° APCH PATH)	3100	2740	2420	2100	1780	1460	1150	750	560			



MISSED APPROACH:
TRACK DCT TO KNXWH,
THEN TRACK 117°.
CLIMB TO 3100FT.

TCH 50FT
THR 12 ELEV 141

NOTES

CATEGORY	A	B	C	D
LNAV/VNAV	560 (419-2.4)			
LNAV	750 (605-3.4)			
CIRCLING *	1190 (1045-2.4)	1350 (1205-4.0)	1350 (1205-5.0)	
ALTERNATE	(1545-4.4)	(1705-6.0)	(1705-7.0)	

- MAX IAS:
INITIAL : 210KT.
- NO CIRCLING STH
OF RWY 12/30.

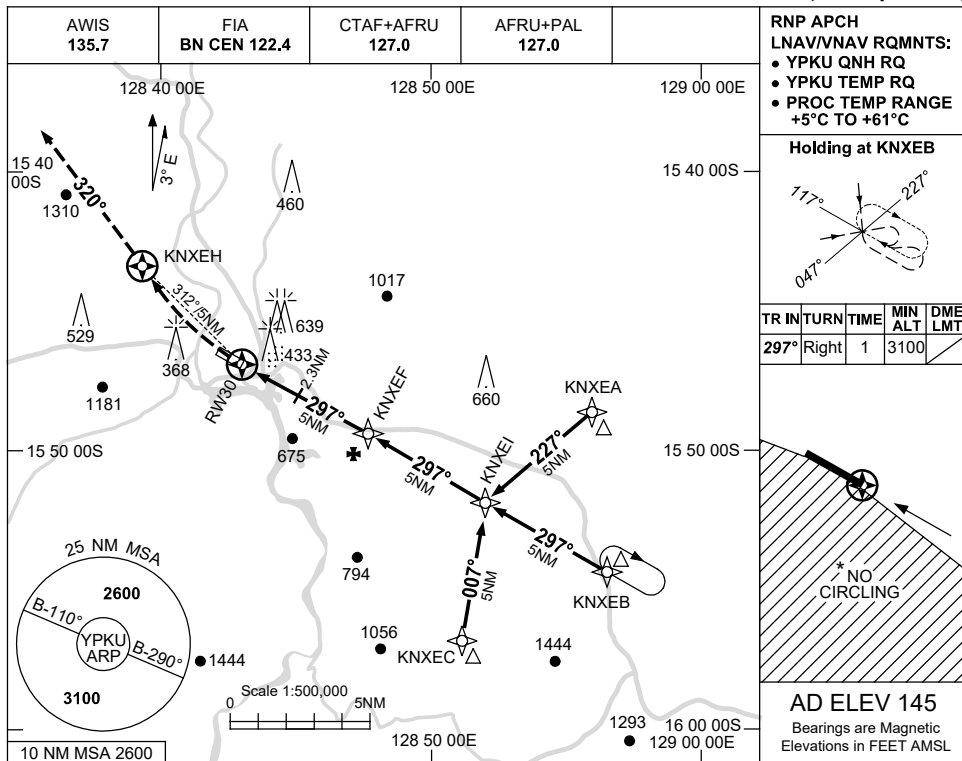
Changes: CHART TITLE, PBN SPECIFICATION BOX.

PKUGN01-172

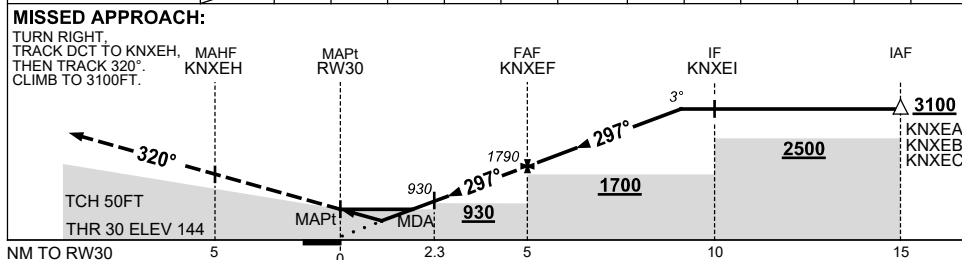
USE QNH

RNP RWY 30
KUNUNURRA, WA (YPKU)

8 SEP 2022



NM TO NEXT WPT	RW30	1.1	1.5	2.3	3	4	KNXEF	1	2	3	4.1		
ALT (3° APCH PATH)		540	680	930	1150	1470	1790	2110	2420	2740	3100		



NOTES

CATEGORY	A	B	C	D
LNAV/VNAV		540 (396-2.2)		
LNAV		680 (535-3.0)		
CIRCLING *	1190 (1045-2.4)		1350 (1205-4.0)	1350 (1205-5.0)
ALTERNATE	(1545-4.4)		(1705-6.0)	(1705-7.0)

- 1. MAX IAS: INITIAL : 210KT. MAP TURN: 200KT.
- * 2. NO CIRCLING STH OF RWY 12/30.

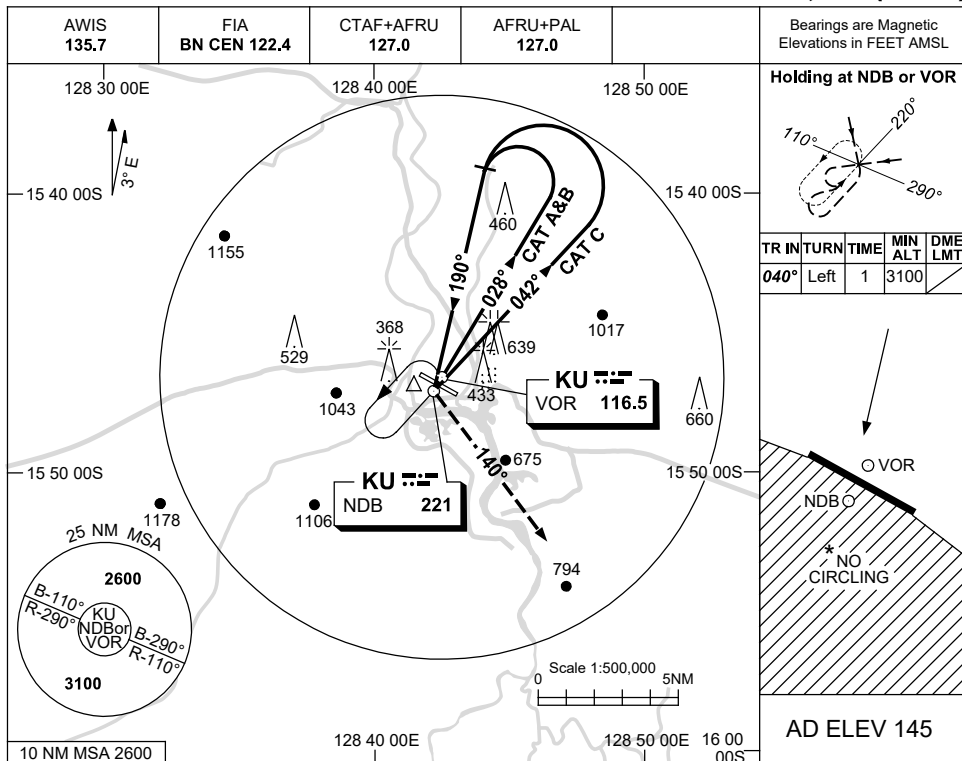
Changes: CHART TITLE, PBN SPECIFICATION BOX.

PKUGN02-172

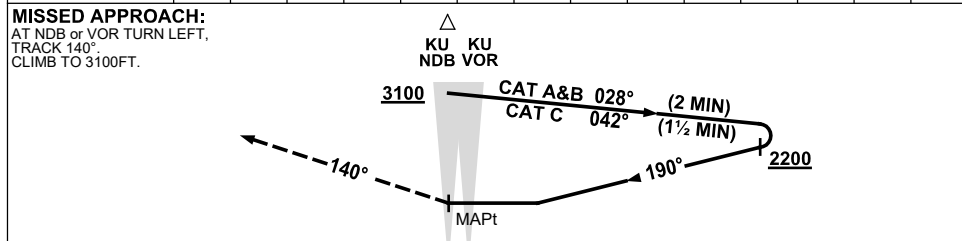
USE QNH

NDB-A or VOR-A
KUNUNURRA, WA (YPKU)

27 FEB 2020



DME DIST	NOT APPLICABLE				
ALT					



NOTES

1. MAX IAS:
INITIAL : 210KT.
- * 2. NO CIRCLING STH
OF RWY 12/30.

CATEGORY	A	B	C	D
				NOT APPLICABLE
CIRCLING *	1190 (1045-2.4)	1350 (1205-4.0)		
ALTERNATE	(1545-4.4)	(1705-6.0)		

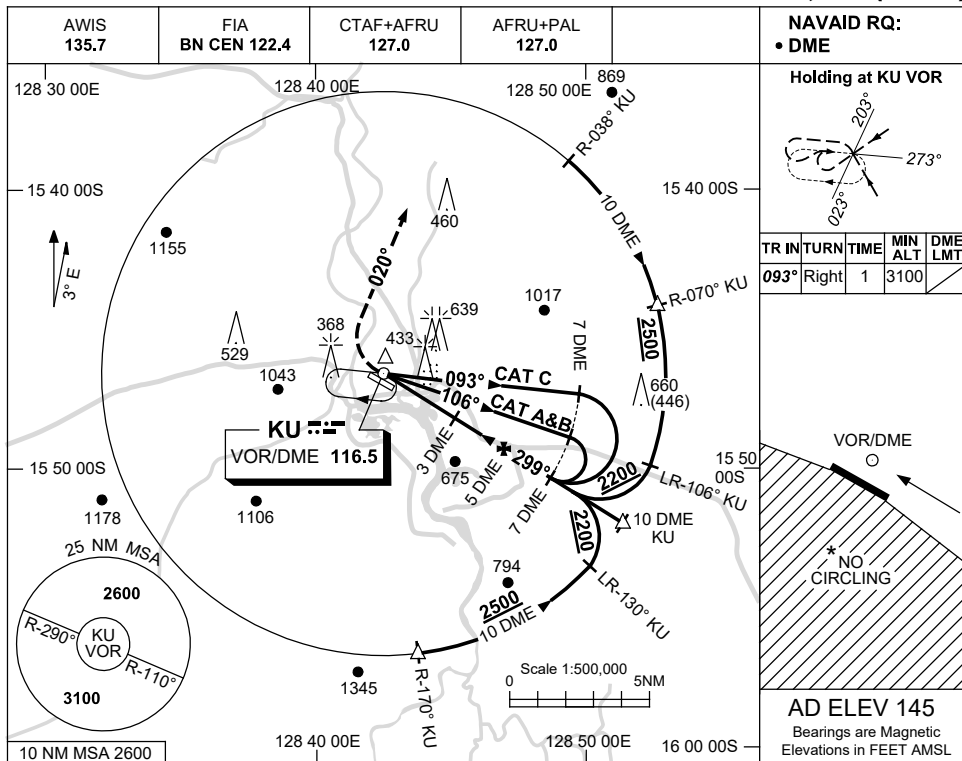
Changes: COORD FMT, Editorial.

PKUNB01-162

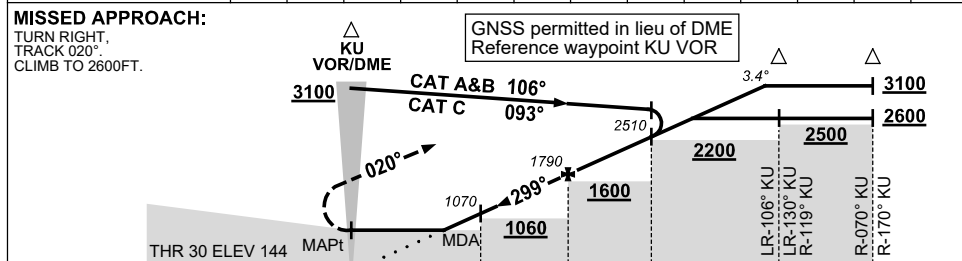
USE QNH

VOR RWY 30
KUNUNURRA, WA (YPKU)

1 DEC 2022



DIST TO KU DME	1.9	2	3	4	5	6	7	7.2	8	8.6		
ALT (3.4° APCH PATH)	680	710	1070	1430	1790	2150	2510	2600	2870	3100		



NOTES

CATEGORY	A	B	C	D
S-I VOR/DME	680 (535-2.7)			NOT APPLICABLE
CIRCLING *	1190 (1045-2.4)	1350 (1205-4.0)		
ALTERNATE	(1545-4.4)	(1705-6.0)		

- MAX IAS: INITIAL : 210KT.
- NO CIRCLING STH OF RWY 12/30.
- APCH PATH ANGLE DOES NOT COINCIDE WITH VASIS ON GLIDE SLOPE INDICATION.

Changes: REMOVE CAT D, Editorial.

PKUVO01-173